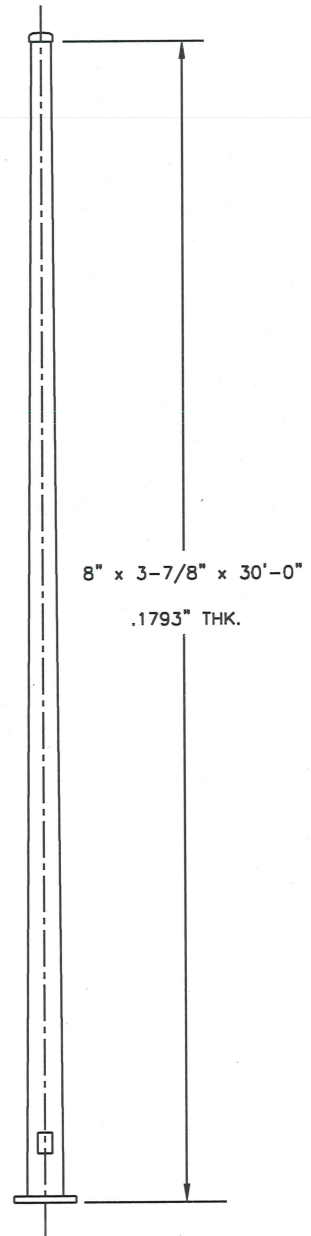
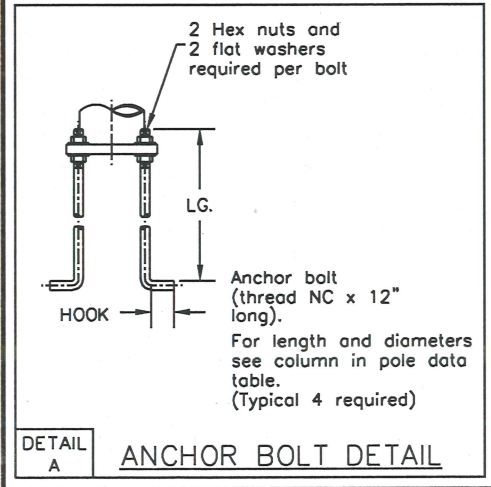
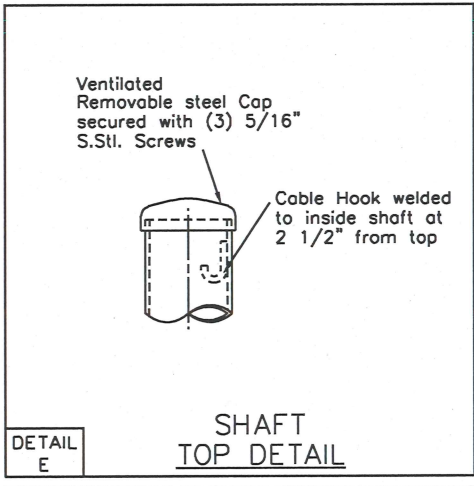
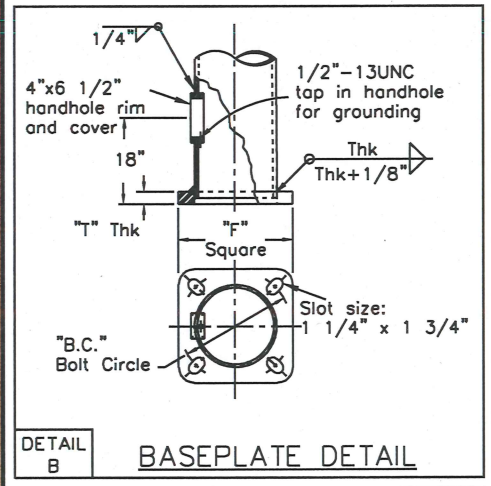
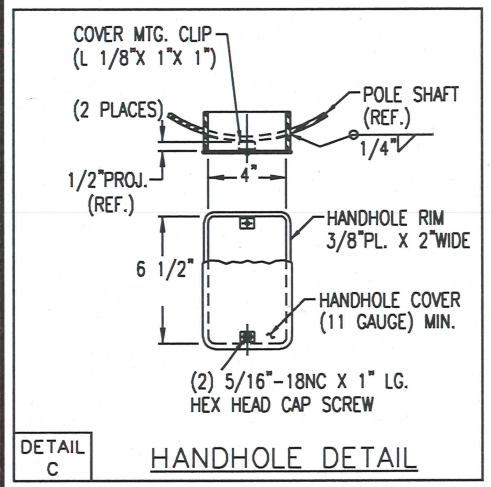


POLE DATA										BASE PLATE			ANCHOR BOLTS			
ITEM	QTY	CATALOG NUMBER	LENGTH	BASE O.D.	TOP O.D.	.1196"	.1793"	.2391"	.3125"	SQUARE "F"	B.C.	THK "T"	QTY	DIA	LG.	HOOK
		Type-4-30	30'-0"	8.000"	3.875"	-	30'-0"	-	-	12.000"	11.500"	1.250"	4	1.000"	60.000"	4.000"

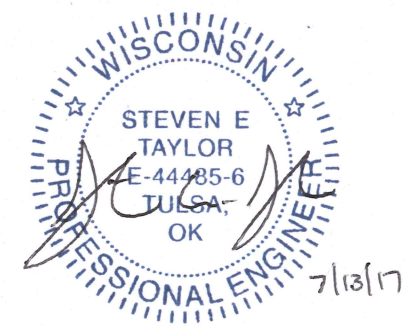
--GENERAL NOTES--

MATERIAL SPECIFICATIONS	
SHAFT	Steel of 50,000 psi min. yield ASTM A-572-50 or A-595-GR.A
BASE PLATES AND FLANGES	ASTM A-36 Steel ASTM A-36 Steel
PIPE	A-500 Gr. "B"
ANCHOR BOLTS	ASTM F-1554 GR. 105 Steel
MANUFACTURING PROCESSES	
BUTT WELDS	Ground flush with base metal
LONGITUDINAL WELDS	All welds shall conform to AWS D1.1 weld specification
CIRCUMFERENTIAL	Butt weld with permanent back-up ring
FINISH COATING	
STRUCTURE	Hot dip galvanized per ASTM A-123
HARDWARE	Hot dip galvanized per ASTM A-153
DESIGN CRITERIA	
STRUCTURE AND HARDWARE	In accordance with the "Specifications for Structural Supports of Highway Signs, Luminaires and Traffic Signals", AASHTO 2013, 90 MPH with a 3.0 second gust, no fatigue.
WELDING	In accordance with the latest edition of the AWS D1.1



POLE TYPE-4
(1) 30'-0" SECTION
(Material ASTM A-572-50 or A-595-A)

- NOTES:
- Anchor bolts not supplied by AMERON. Dimensions and detail shown for information only. Material must comply with the reqmt's of ASTM F-1554 GR. 55 or similar with a minimum yield strength of 55 ksi.
 - Loading must not exceed a max of two 15ft truss luminaires and two 5 section signals per WI DOT sheet S.D.D. 9E 1-14c
 - Ameron reserves the right to install tooling lugs or holes to facilitate in the galvanizing process. These lugs/holes will not impede with fit form or function of the finished product and are to be used solely by the manufacturer.



REV	DATE	DESCRIPTION	BY	APPR
C	7/17	REVISED ANCHOR BOLTS	JM	ST
B	7/17	PER CUSTOMER REVIEW	JM	ST
A	5/17	PER CUSTOMER REVIEW	JM	GM

Ameron POLE PRODUCTS DIVISION

STATE OF WISCONSIN
TYPE 4 LIGHTING POLES

THIS DOCUMENT CONTAINS INFORMATION WHICH IS PROPRIETARY TO AMERON. IT SHALL NOT BE REPRODUCED, USED OR DISCLOSED TO ANYONE WITHOUT THE PRIOR WRITTEN PERMISSION OF AMERON.

DRAWN: ST	DATE: 9/15	SCALE	W15TR05	REV C
APPR: JM	DATE: 9/15	NTS		