

CAST ALUMINUM
POLE CAP WITH
STAINLESS STEEL
HARDWARE

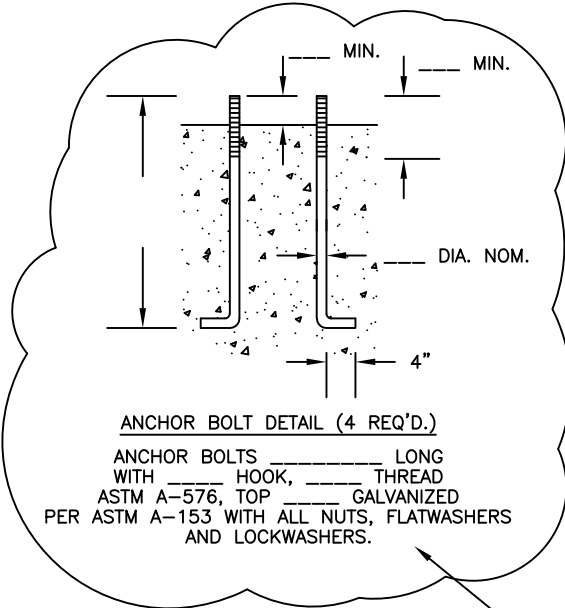
1 3/8" DIA. WIRE
ACCESS HOLE
(FIELD DRILLED)
W/ RUBBER GROMMET

"B" TOP DIA.

PROVIDE WELDED
INTERNAL J-HOOK @
TOP OF POLE

"D"

SPUN TAPERED ALUMINUM SHAFT ALLOY 6063-T6
"A" BOTTOM DIA., "B" TOP DIA., "C" WALL TH'K.
"D" OVERALL LENGTH, MECH. ROTARY SANDED 60 GRIT
AFTER FABRICATION



ANCHOR BOLT DETAIL (4 REQ'D.)

ANCHOR BOLTS _____ LONG
WITH _____ HOOK, _____ THREAD
ASTM A-576, TOP _____ GALVANIZED
PER ASTM A-153 WITH ALL NUTS, FLATWASHERS
AND LOCKWASHERS.

4" x 6" NOMINAL, REINFORCED, FLUSH HANDHOLE
WITH COVER, (USE 1/4-20NC ST. ST'L. HEX CAP SCREWS)
AND 1/4-20NC GROUND PROVISION OPPOSITE HANDHOLE.

NOTE: HANDHOLE SHALL FACE
AWAY FROM TRAFFIC

18"

"A" BOTTOM DIA.

4043

POLE
ID TAG

CAST ALUMINUM SHOEBASE WITH
CIRCUMFERENTIAL WELDS BOTH
INSIDE AND OUT

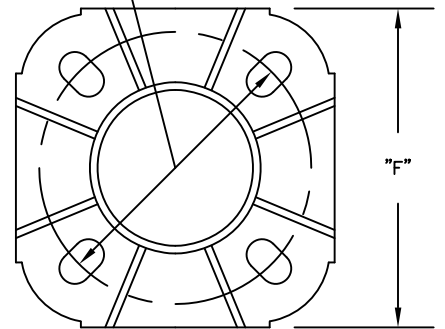
◇ ————— SCHEDULE ————— ◇

CATALOG #	QTY	A	B	C	D	E	F
FPFLS84530C-DC-WISDOT-TYPE 5		8"	4 1/2"	.188"	30'	11" THRU 12"	12"

REFERENCE:
WISDOT TYPE 5 ALUMINUM POLE

"SPUN TAPERED ALUMINUM LIGHTING STANDARD"

"E"
BOLT CIRCLE
DIA.




CAST ALUMINUM SHOEBASE

ALLOY 356-T6
WITH 4 CAST ALUMINUM BOLT COVERS
WITH ST. ST'L. ATTACHMENT SCREWS
STAMP ".188" PER SPECIFICATIONS

ANCHOR BOLTS NOT
INCLUDED (BY OTHERS)


WISDOT "TYPE 5" POLE

REVISIONS		
NO.	DATE	BY
1		
2		
3		
4		
5		



ALUMINUM LIGHT STANDARDS
TUBULAR METAL PRODUCTS

95 GNARLED HOLLOW RD.
EAST SETAUKET, N.Y.
11733



TUBULAR PRODUCTS, INC.

PROJECT: WISCONSIN DOT	DIST:	
CONTRACTOR:	AGENT: JIM HERRD	
DRAWN BY SAF	DATE 03/27/17	MATERIAL AS NOTED
CHK'D	APP'D	DRAWING NO. 14195
SCALE NONE	WORK ORDER #	