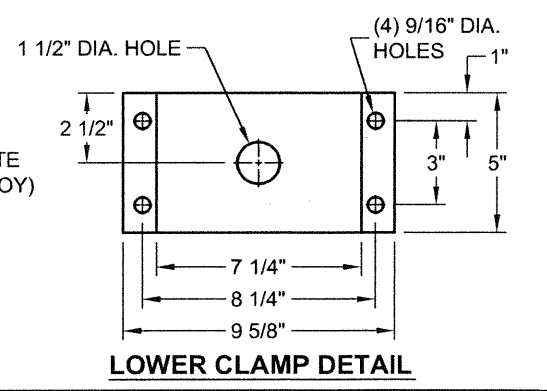
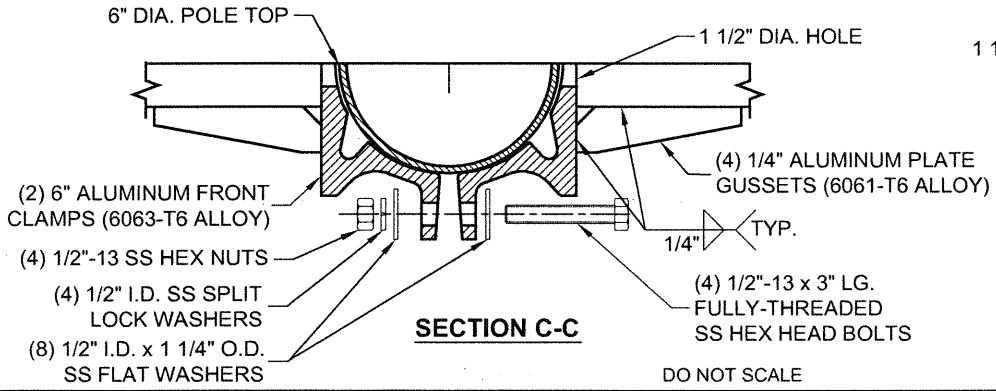
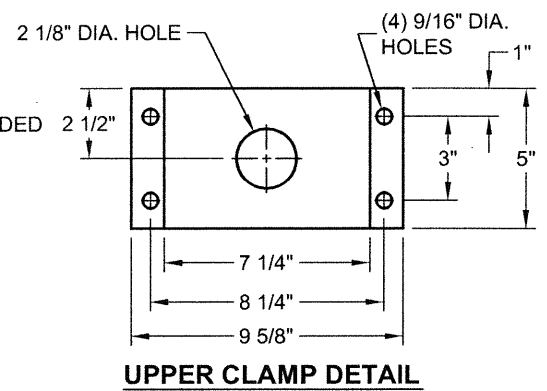
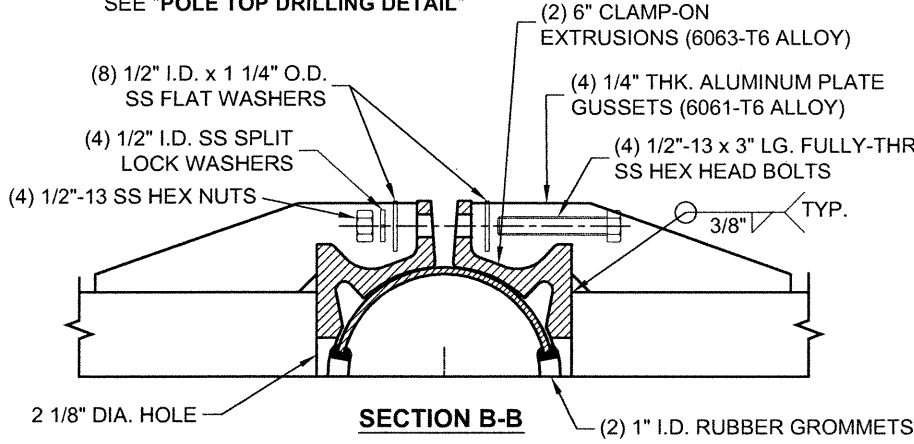
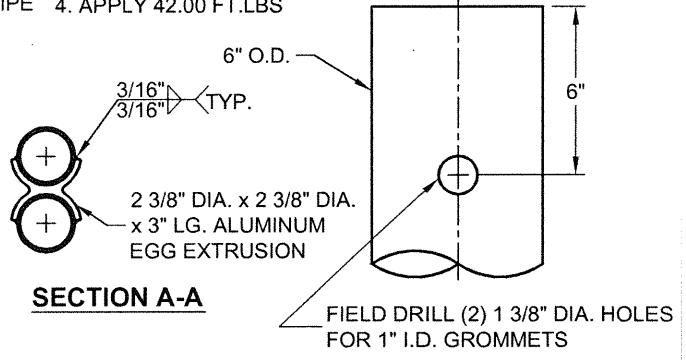


**TIGHTENING SEQUENCE**  $\Delta$   
**FOR  $\varnothing$ 1/2" STAINLESS STEEL BOLTS**  
 1. TIGHTEN WITH HAND  
 2. APPLY 31.50 FT.LBS  
 3. APPLY 40.00 FT.LBS  
 4. APPLY 42.00 FT.LBS

**NOTE:**  
 1. WELDING WIRE (ER4043).  
 2. TRUSS ARM HEAT TREATED AFTER FABRICATION TO T6 CONDITION.  
 3. ALL HARDWARE IS 300 SERIES STAINLESS STEEL.  
 4. ALL HARDWARE TO BE COATED WITH ANTI-SEIZE COMPOUND BY CONTRACTOR IF REQUIRED.



DO NOT SCALE

**valmont**  
 Valmont Industries, Inc. Structures Division  
 20805 Eaton Ave Farmington, Minnesota 55024-7932  
 Phone: (651) 463-8990 (800) 899-7577  
 Fax: (651) 463-3349

TITLE: S TRUSS SGL/DBL A 10' x 30" x 3.5" x 6.0 CL F.S.		QTY: -
MODEL NO.: (1) OR (2) TA1030C60ZA		OWN BY: SLF
MATERIAL: ALUMINUM ALLOY		CHK'D BY:
FINISH: 100 GRIT SATIN POLISH		APPR BY: <i>CS</i>
PROJECT: WISDOT		DATE: 03/10/11
SOLD TO:		DWG NO: DR1154
SHIP TO:		PAGE:
P.O. NO:		BY 14 / 25
REP:		
$\Delta$	01-20-15	CH'D ARM RISE DEGREE TO 3°; ADDED NOTE
$\Delta$	01-22-13	ADDED GUSSETS; ADDED NOTES
REV	DATE	REVISION DESCRIPTION

**\*\*CONFIDENTIAL\*\***

The information contained in this drawing is privileged and confidential, and may be protected from disclosure. Please be aware that any use or dissemination of this drawing may be subject to legal restriction or sanction.