



WIS 22 Public Involvement Meeting

Kurt Vogel, P.E.

WisDOT Project Manager

Brian Edwards, P.E.

WisDOT Project Supervisor

December 7, 2022

WELCOME EVERYONE!

WIS 22

- Introductions
- Overview
 - Proposed Project Scope/Need
 - Proposed Improvements
 - Traffic Control
 - Public Involvement Materials
 - Schedule
 - Resources
 - Project Contacts



WIS 22

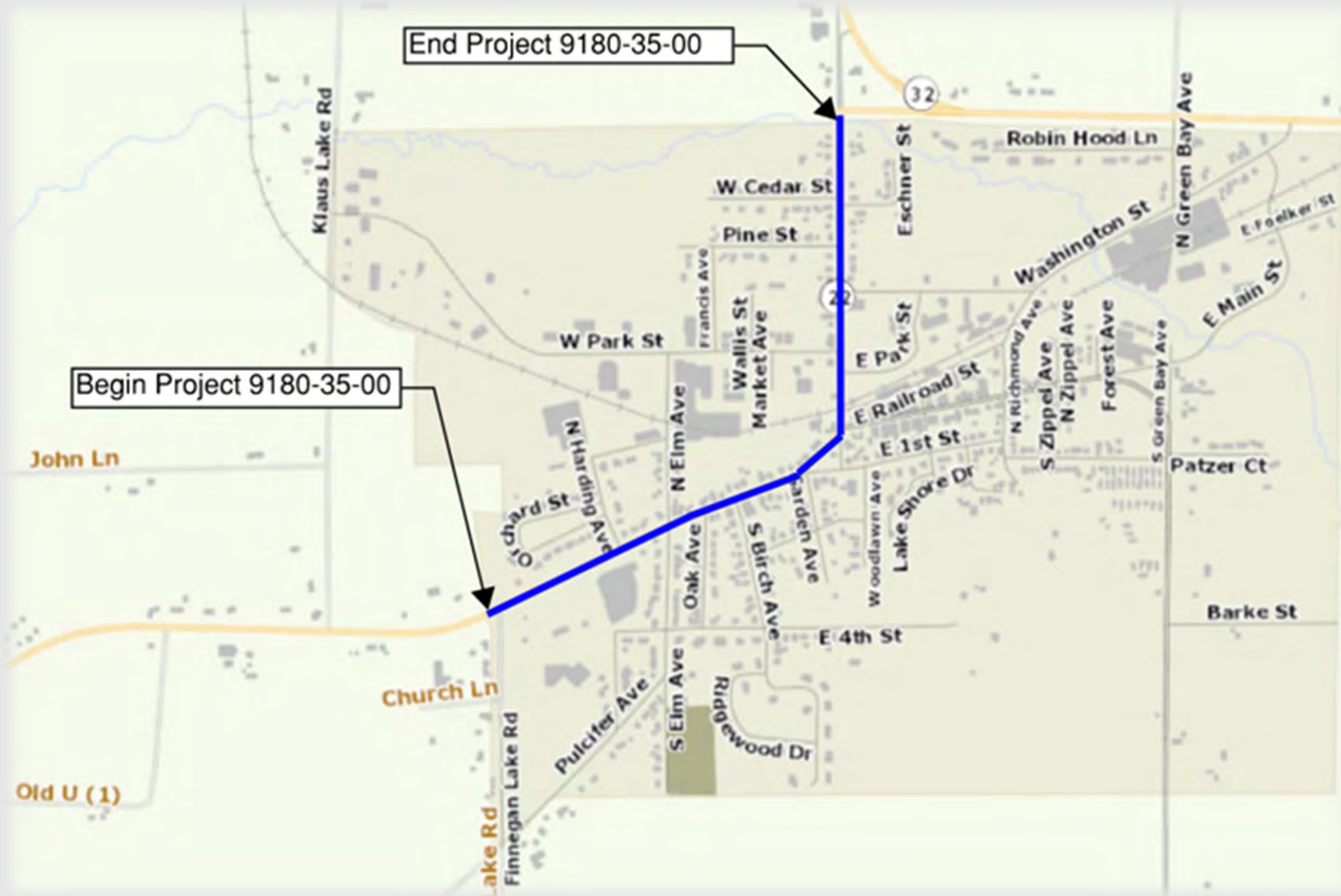
- Proposed Project Scope/Need
 - Address deteriorating conditions along WIS 22
 - Reconstruct WIS 22 from South City Limits to North City Limits
 - Replace storm sewer
 - Extend Christie Brook box culvert



WIS 22

Project Location

Finnegan Lake Road
to
WIS 32

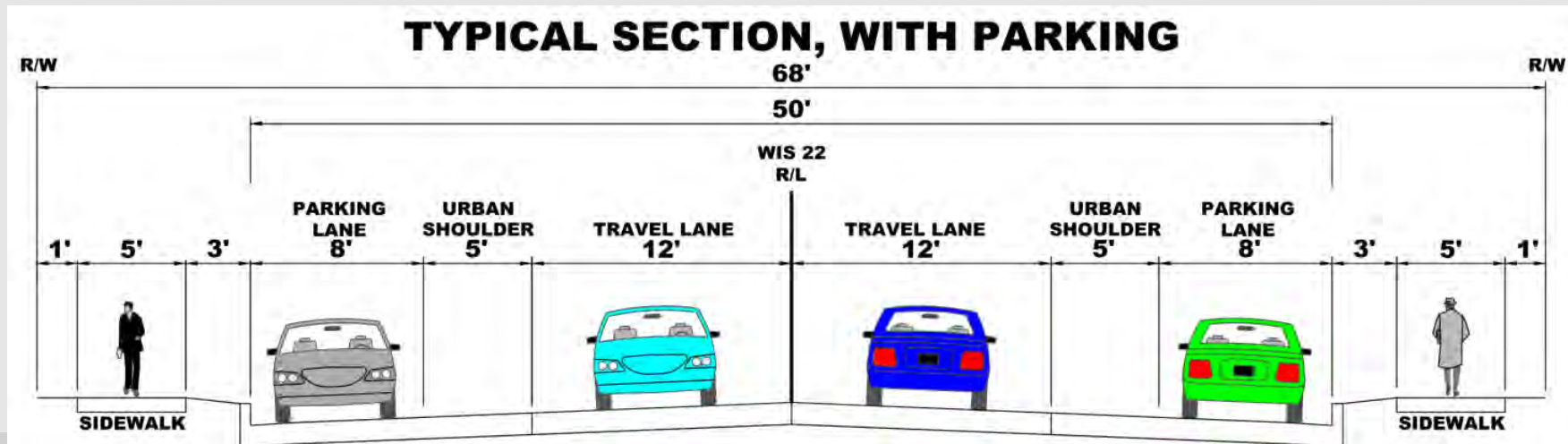
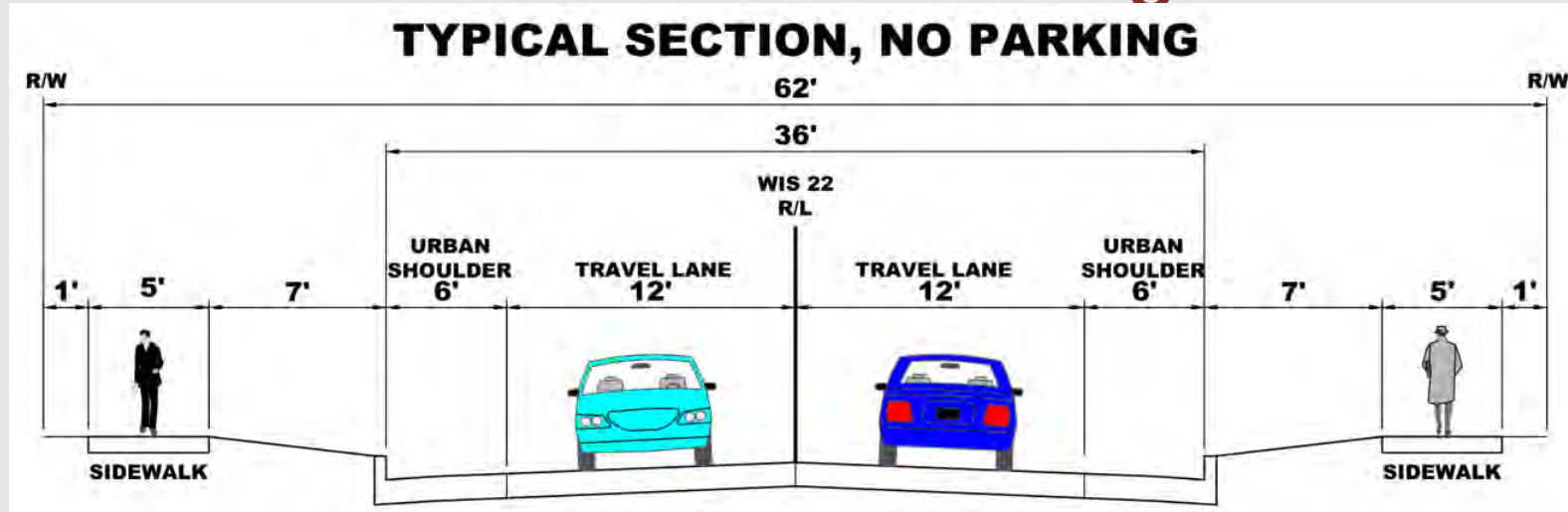


WIS 22 Proposed Improvements

- New concrete pavement
- New concrete sidewalk with ADA-compliant curb ramps
- New concrete curb & gutter
- Select intersection improvements
 - Finnegan Lake Road
 - S. McKenzie Street
 - Main St./County BB
 - Railroad Street
 - W. Park Street
 - North project limits

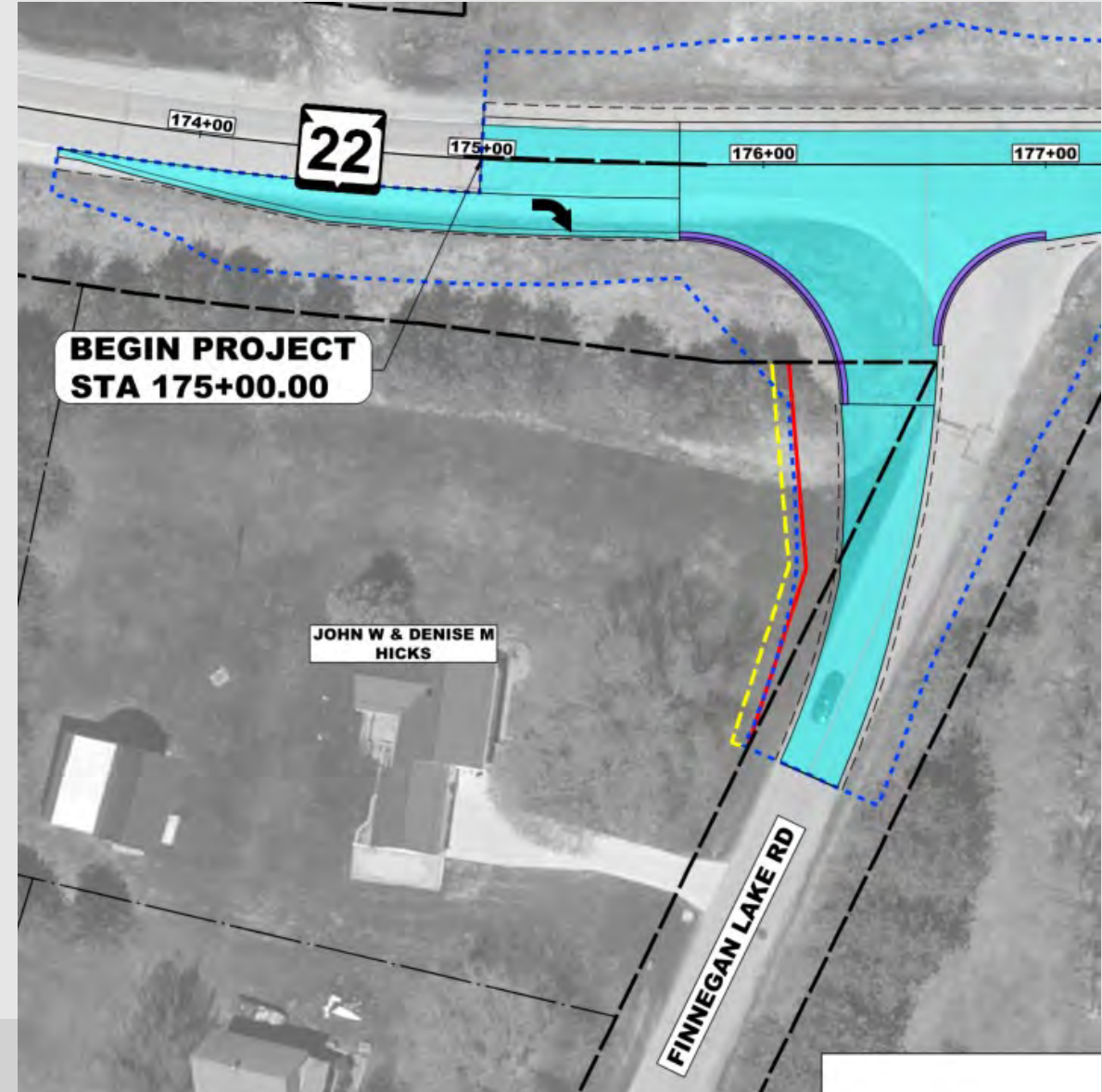


Proposed Typical Sections With and Without Parking Lanes



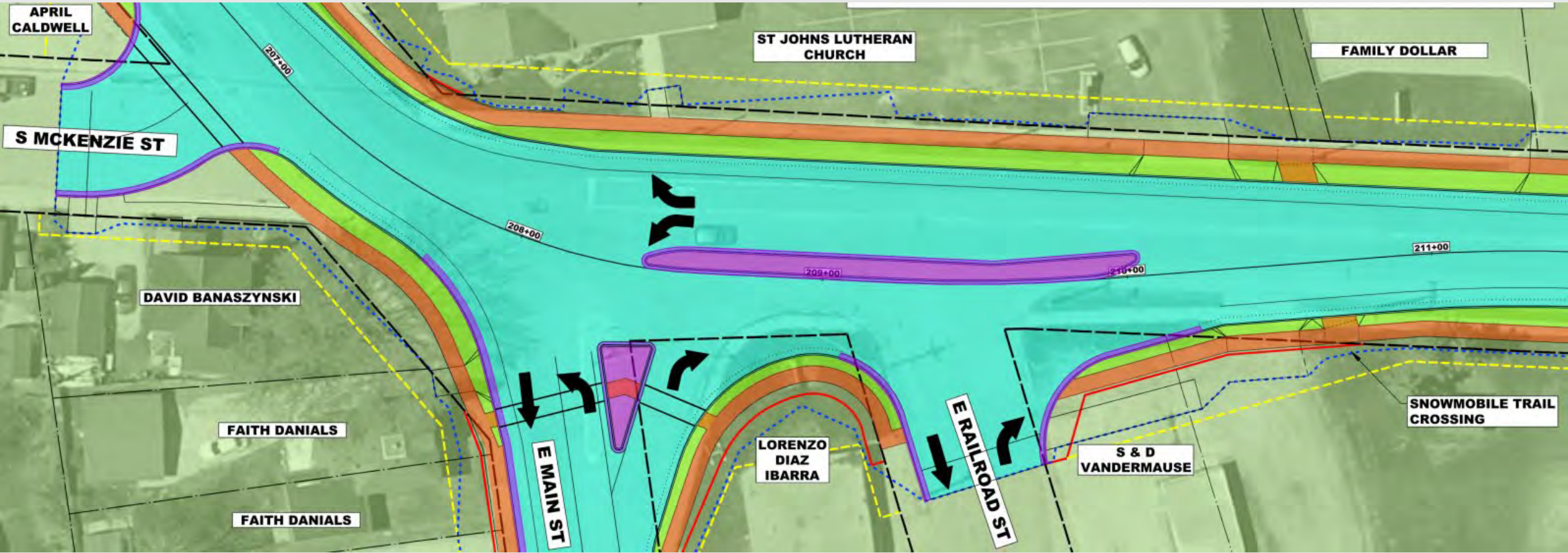
Intersection Improvements

Finnegan Lake Road



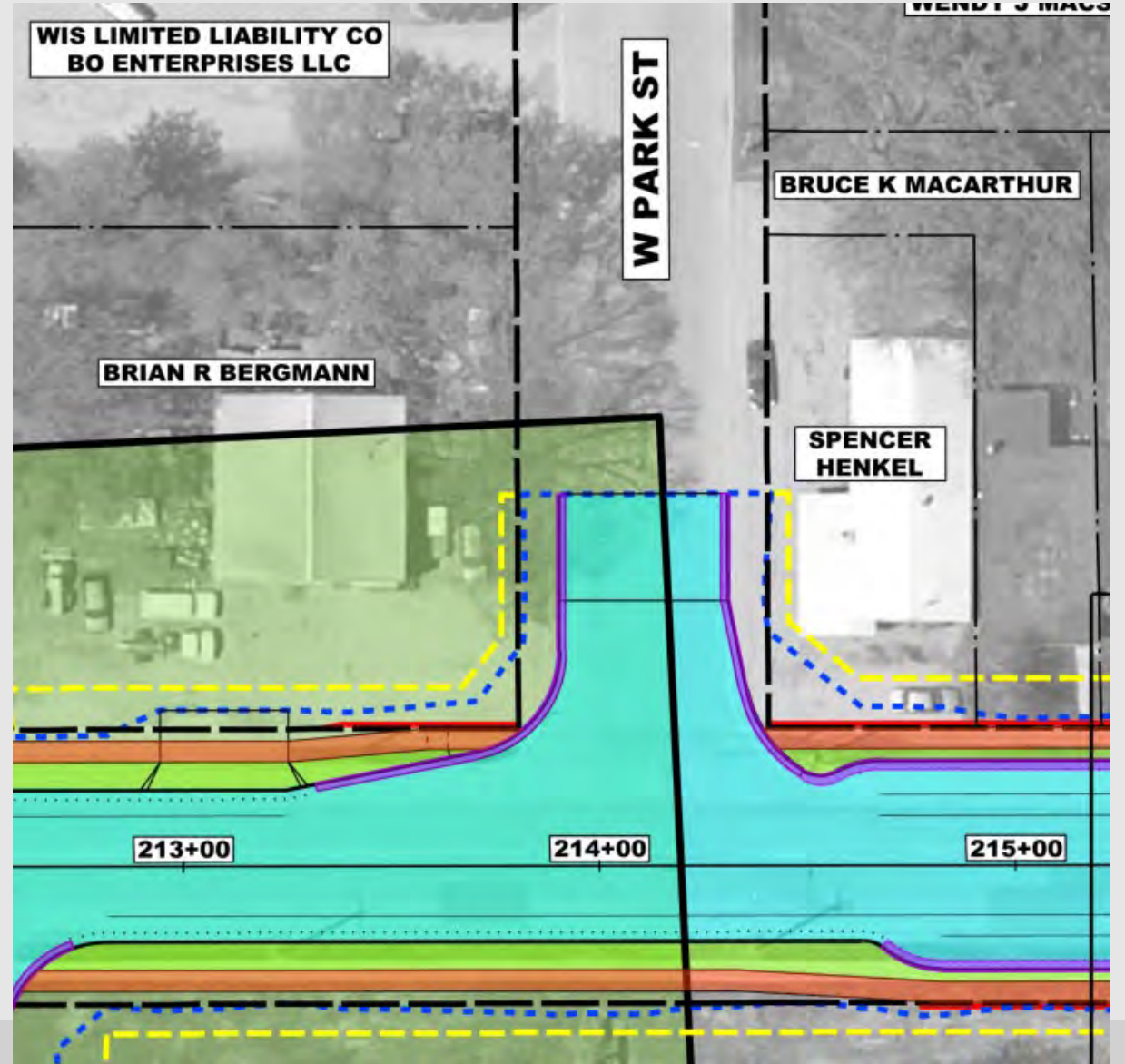
Intersection Improvements

S. McKenzie, Main, and Railroad streets



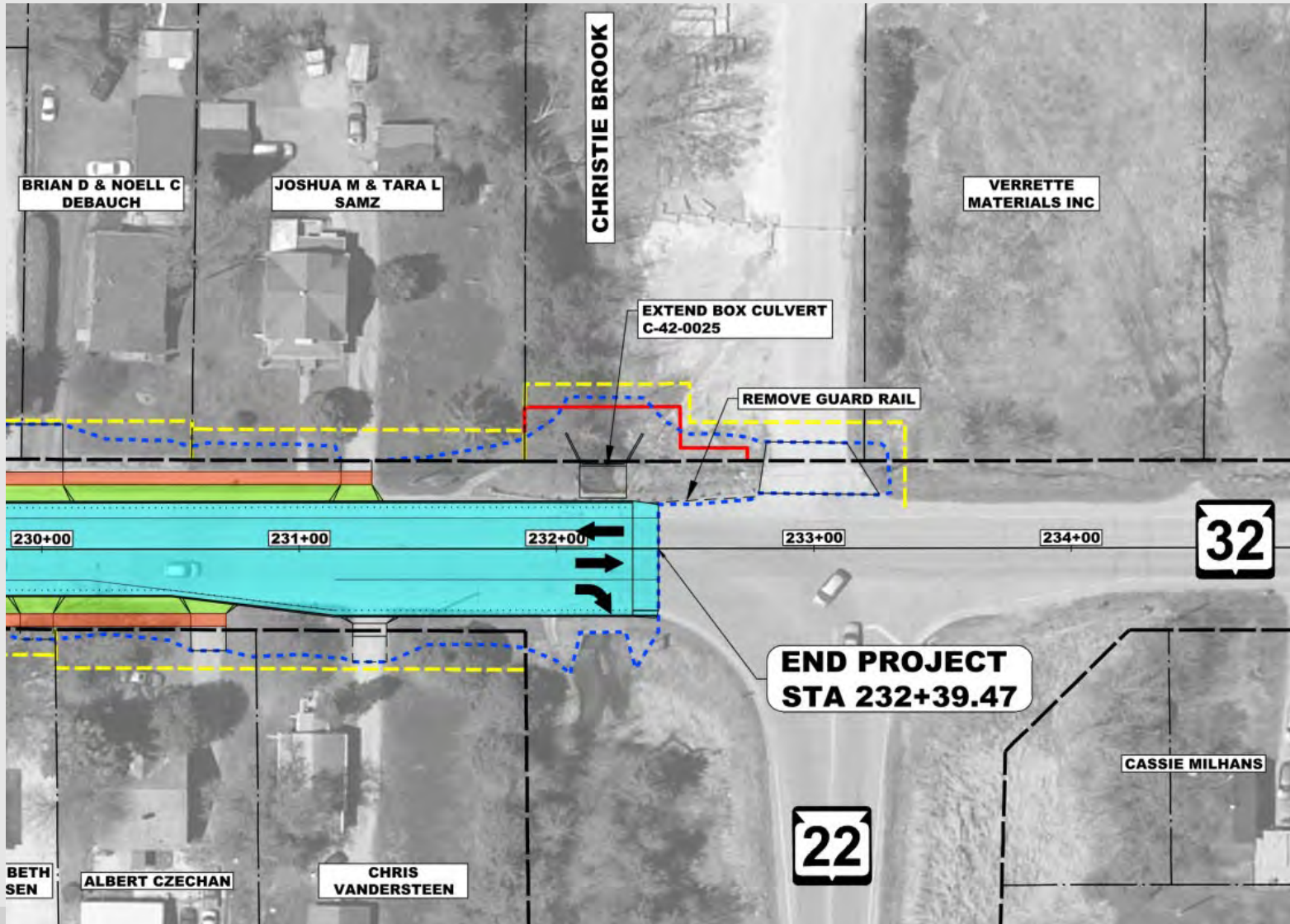
Intersection Improvements

W Park Street



Intersection Improvements

North Project Limits



WIS 22 Traffic Control

- Road Closed to through traffic
- Local access maintained for residents, businesses, and emergency services
- Duration TBD
- Traffic will be detoured onto County R and County H
 - State highway detours must consider long-haul truck traffic. Local traffic may find shorter routes using the local system.



WIS 22 Real Estate Needs

- Permanent fee and temporary limited easements (TLE) are needed for the project
 - Intersection improvements
 - New curb ramps
 - New sidewalk
- Landowner rights brochure can be found on the project website
- Real estate acquisition to begin in fall 2023



WIS 22 Schedule

- Public Involvement Meeting: December 7, 2022
- Preliminary design: Winter 2022/2023
- Final Environmental Document: Spring 2023
- Begin real estate acquisition: Fall 2023
- Final plans and utility relocation: 2025
- Construction: Spring/Summer 2026



WIS 22 Resources

- Design website
 - <https://wisconsindot.gov/Pages/projects/by-region/ne/22gillett/default.aspx>
 - See design website or handout for more detailed information and comment sheet
- Track the project during construction on the WisDOT Northeast Region Construction Website
 - <https://projects.511wi.gov/region/northeast>
- In This Together Business Resource
 - Recognizes businesses located in work zones have special needs
 - The program is offered to business and community leaders as an idea source to plan for road construction
 - Find out more at: <https://wisconsindot.gov/Together>



Questions and Comments

Design comments for consideration by December 23, 2022

- Comment at public involvement meeting
- Comment form with prepaid mailer in handout
- Comment form on design website:
 - <https://wisconsindot.gov/Pages/projects/by-region/ne/22gillett/default.aspx>
- Comment via email to project staff
 - Kurt.vogel@dot.wi.gov
- Comment via phone call to project contacts

