

# Project Improvements – WIS 32/Main Avenue (Eighth Street to Seventh Street)

	Existing	Proposed
Sidewalk (feet)	4.5	4.5
Terrace (feet)	10.5 - 11.5	8.5 - 9.5
Bike Facilities	No	No
ADA Compliance	No	Yes
Lane Width (feet)	10	11
Face-of-Curb to Face-of-Curb Width (feet)	44	48

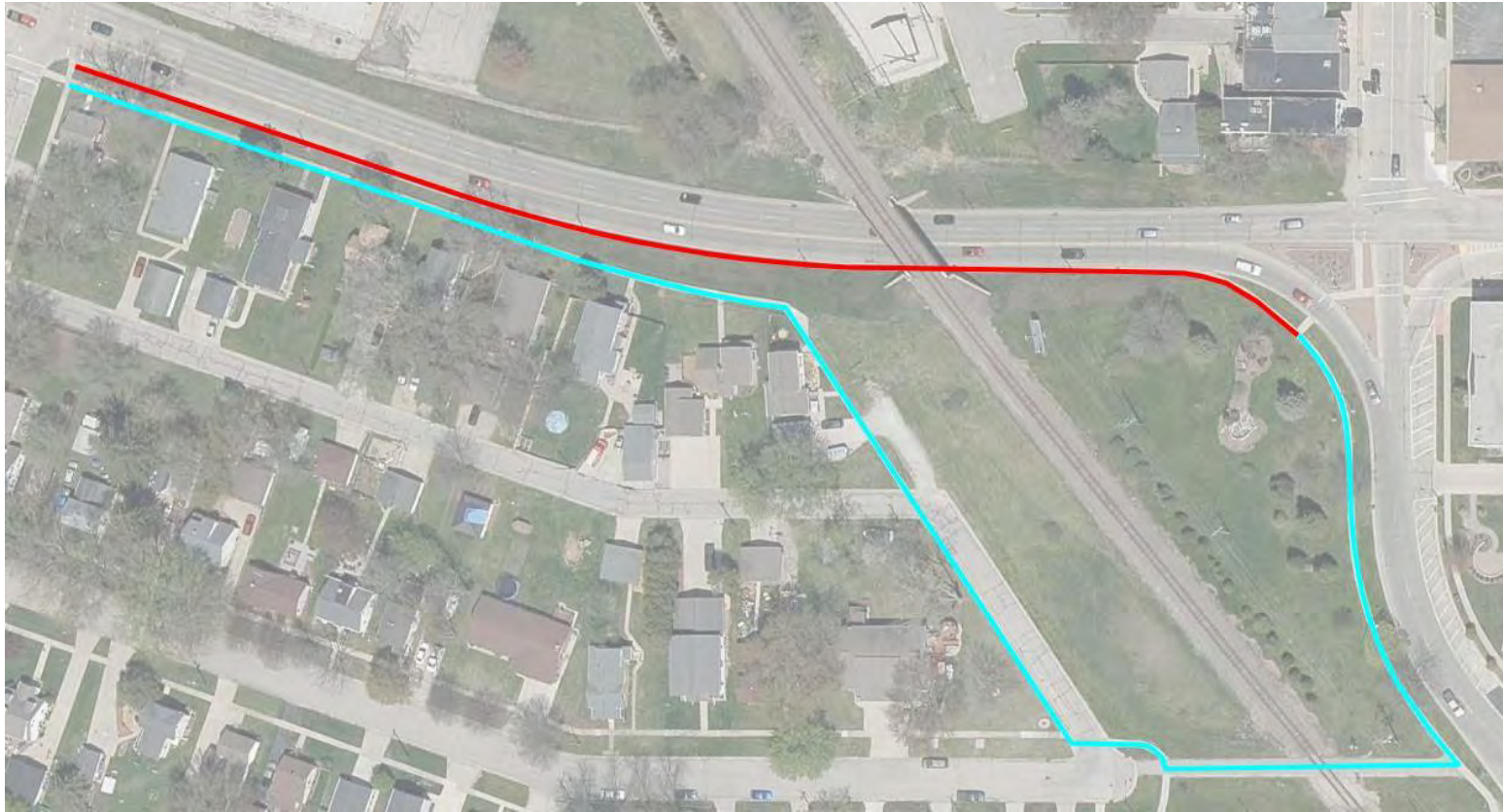


# Project Improvements – WIS 32/Main Avenue (Seventh Street to Fort Howard Avenue)

	Existing	Proposed
Lane Width (feet)	Varies 10 - 13	11
Face-of-Curb to Face-of-Curb Width (feet)	37	37
Sidewalk (feet)	4	Rerouted Sidewalk
Horizontal Clearance to Bridge from driving lane (feet)	Varies 3 - 8	6
Vertical Clearance to Bridge (feet)	14.4	14.4



# Project Improvements – WIS 32/Main Avenue (Seventh Street to Fort Howard Avenue)



- WB - two 11-foot lanes
- EB - one 11-foot lane
- Sidewalk rerouted to provide additional lateral clearance
- Red – Removed Sidewalk
- Cyan – Rerouted Pedestrian Path (Existing Sidewalk)

# Project Improvements – WIS 32/Main Avenue (Fort Howard Avenue to Third Street)

	Existing	Proposed
Sidewalk (feet)	6	6
Terrace (feet)	5 - 6	7 - 8
Bike Facilities (feet)	5	5 (North side)
ADA Compliance	No	Yes
Lane Width (feet)	12	12
Parking Lane (feet)	8	8 (North) – 10 (South)
Face-of-Curb to Face-of-Curb Width (feet)	54+	47



# Project Improvements – WIS 32/Reid Street (Fort Howard Avenue to Third Street)

	Existing	Proposed
Sidewalk (feet)	4.5	4.5
Terrace (feet)	6	6
Bike Facilities (feet)	No	5 (South side)
ADA Compliance	No	Yes
Lane Width (feet)	12	12
Parking Lane (feet)	8	9 (South) – 10 (North)
Face-of-Curb to Face-of-Curb Width (feet)	48+	48



# Project Improvements – WIS 32/Third Street (Main Avenue to Reid Street)



- Roadway Improvements
  - Joint Repair
  - Curb Ramp upgrades
- No Roadway Geometric Changes

