

# WIS 32

# Public Involvement Meeting

**Joshua Lang, P.E.**  
WisDOT Project Manager

West De Pere Middle School  
1177 S 9<sup>th</sup> Street, De Pere, WI

October 26, 2023

# Presentation Outline

- ① Project Team
- ② Project Status/Timeline
- ③ Need for the Project
- ④ Project Improvements
- ⑤ Next Steps
- ⑥ How to stay informed?
- ⑦ Business Coordination



# Project Team



**WisDOT – Northeast Region**

**City of De Pere**

**Design Engineering Consultant**



# Overall Project Timeline

**WE ARE  
HERE**



**Project  
Initiation**

**Environmental  
Study**

**Design**

**Utility  
Construction**

**Roadway  
Construction**

**Fall 2022**

**2022 - 2024**

**2024 - 2027**

**2027**

**2028**





# What's New Since December 2022?

- Intersection Control Evaluations Completed
  - Main Avenue/Eighth Street
  - Main Avenue/Fort Howard Avenue
  - Main Avenue/Fifth Street
- Curb Ramp Review for ADA compliance Completed
- Storm Sewer Condition Assessment Completed
- Pavement Type Selection/Design Completed
- Recommended Roadway Typical Sections Determined



# Ongoing since December 2022

- Preliminary roadway and ADA design (curb ramps and sidewalk)
- Railroad Coordination (on-going) for the two at-grade crossings
- Agency Coordination
- Environmental Document (Draft – in progress)



# What is the Need for the Project?



Pavement Deterioration



Curb Ramps

## Other Needs

- Railroad Crossings
- Underground Utilities
- Bike Accommodations
- Pedestrian Accommodations



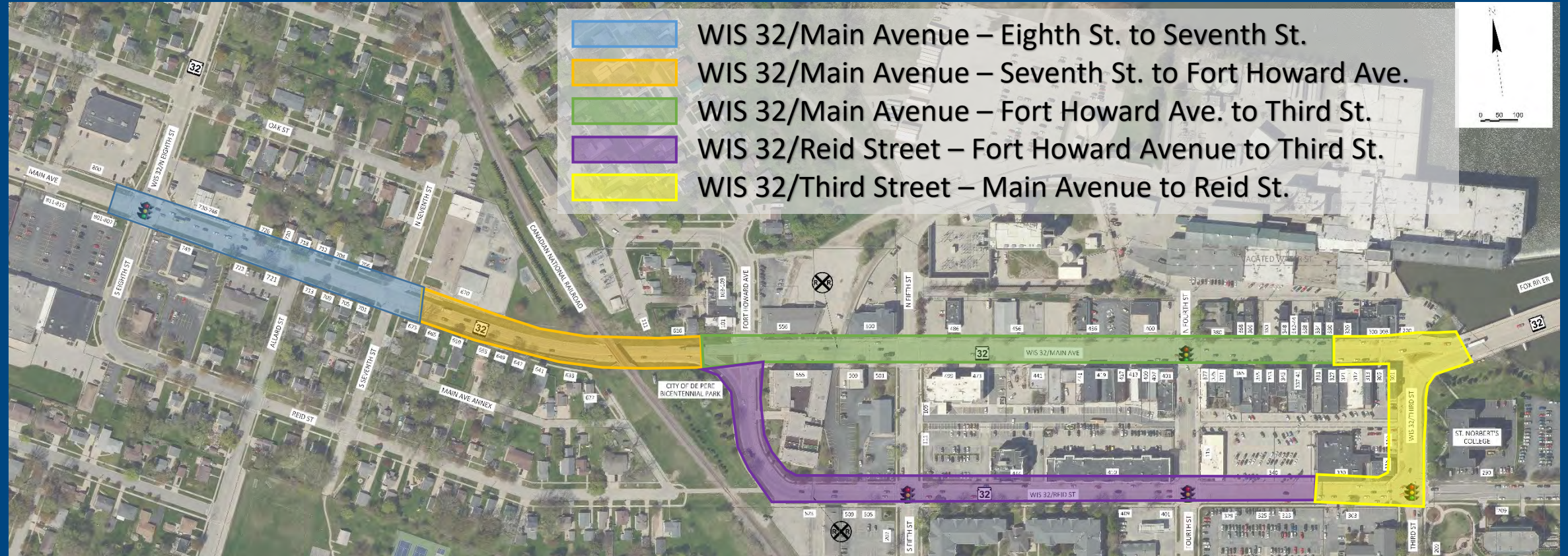


# What is the General Project Area?



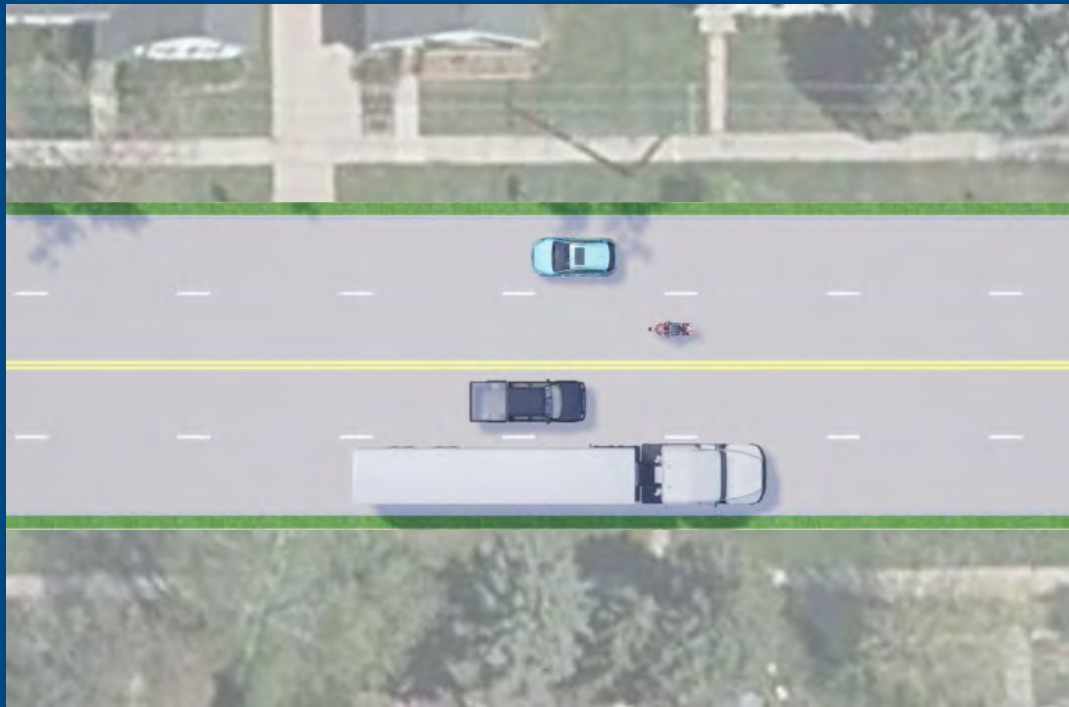


# Project Improvements





# Project Improvements – WIS 32/Main Avenue (Eighth Street to Seventh Street)



Lane Width

Grass Terrace Width

Increased to 11 feet

Decreased by 2 feet



# Project Improvements – WIS 32/Main Avenue (Seventh Street to Fort Howard Avenue)



Lane Width

Horizontal Clearance

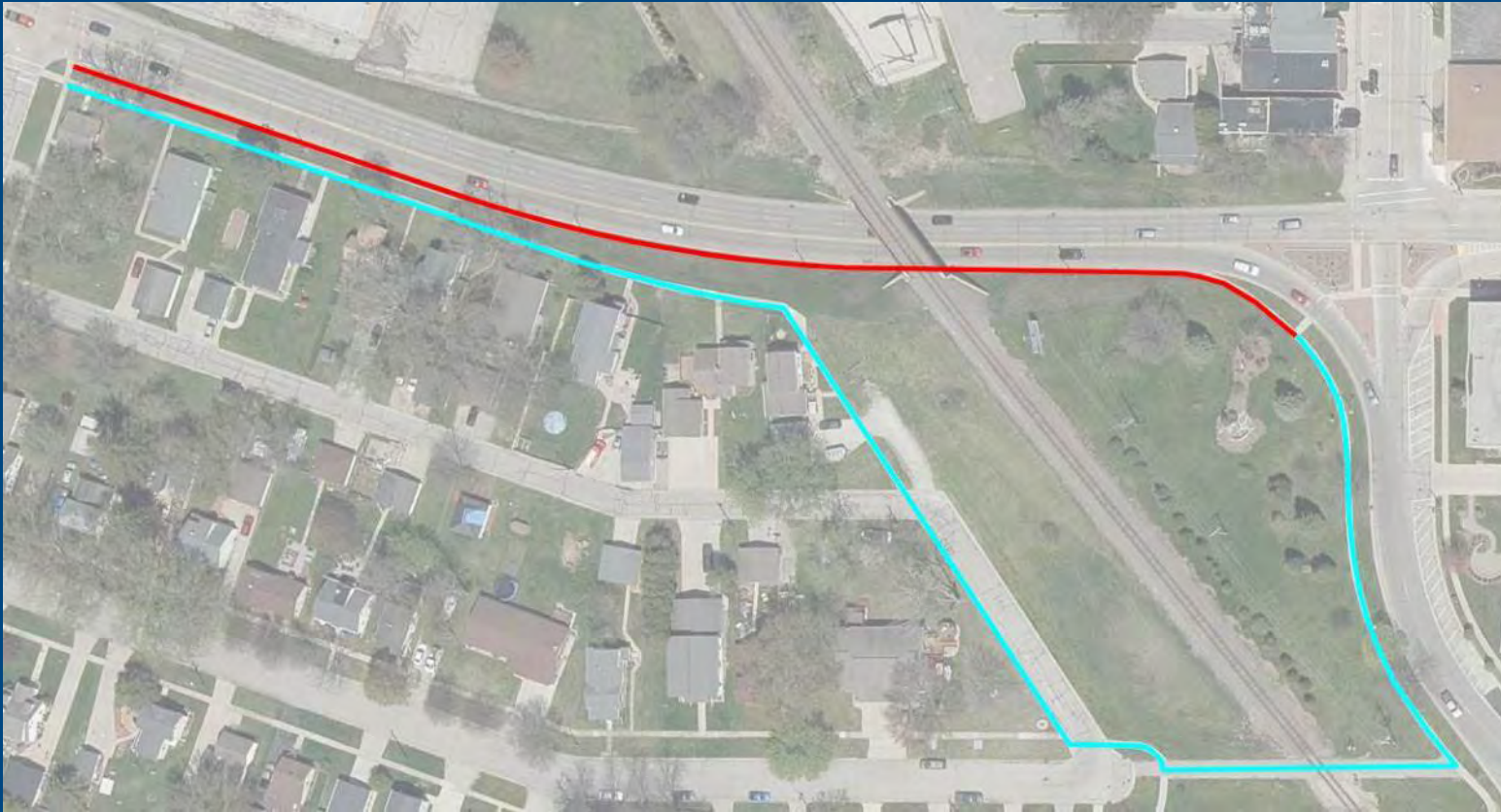
All lanes 11-foot

6-foot both sides





# Project Improvements – WIS 32/Main Avenue (Seventh Street to Fort Howard Avenue)



- WB - two 11-foot lanes
- EB - one 11-foot lane
- Sidewalk rerouted to provide additional lateral clearance
- Red – Removed Sidewalk
- Cyan – Rerouted Pedestrian Path (Existing Sidewalk)



# Project Improvements – WIS 32/Main Avenue (Fort Howard Avenue to Third Street)



Lane Width

12-foot

Terrace

Increase by 2.5-feet





# Project Improvements – WIS 32/Reid Street (Fort Howard Avenue to Third Street)



Lane Width

No Change

Bike Lane

N/A to 5-foot



# Project Improvements – WIS 32/Third Street (Main Avenue to Reid Street)



- Roadway Improvements
  - Joint Repair
  - Curb Ramp upgrades
- No Roadway Geometric Changes





# Intersection/Multimodal Improvements



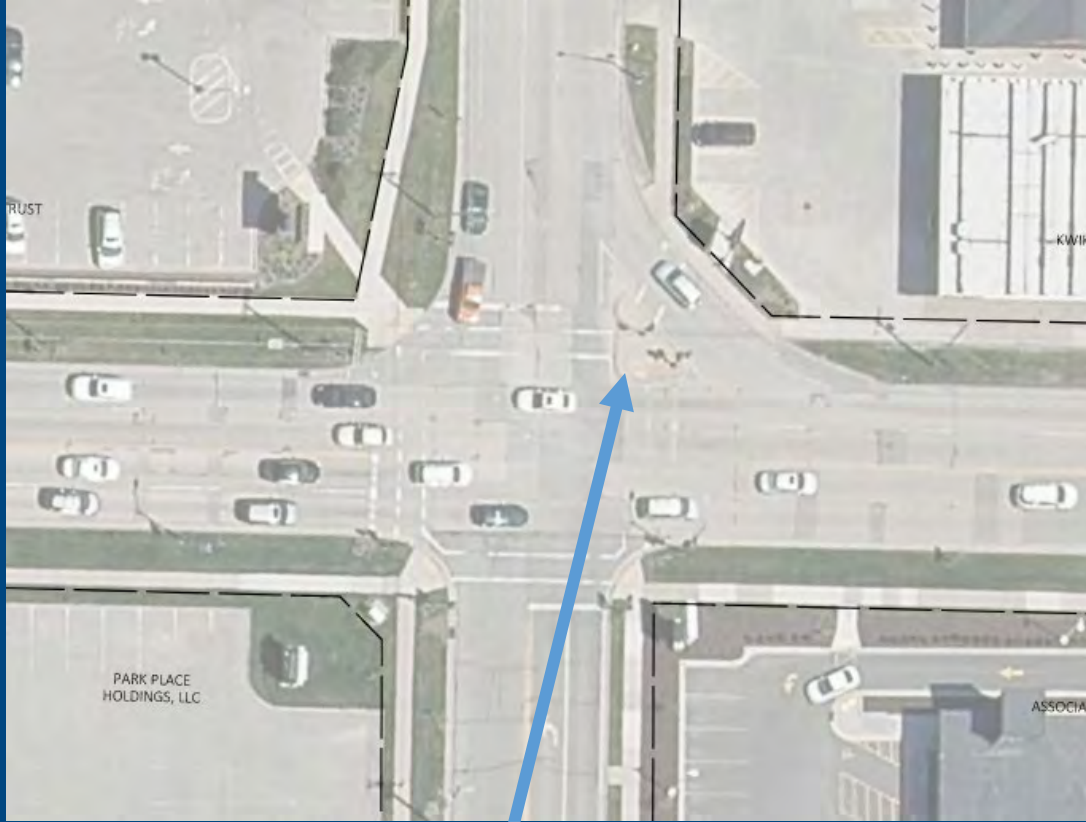
ADA Curb Ramps



Marked Bike Lanes

- Marked Pedestrian Crossings
- Leading Pedestrian Interval
- Curb Bump Outs

# Main/Eighth Intersection Design Investigation



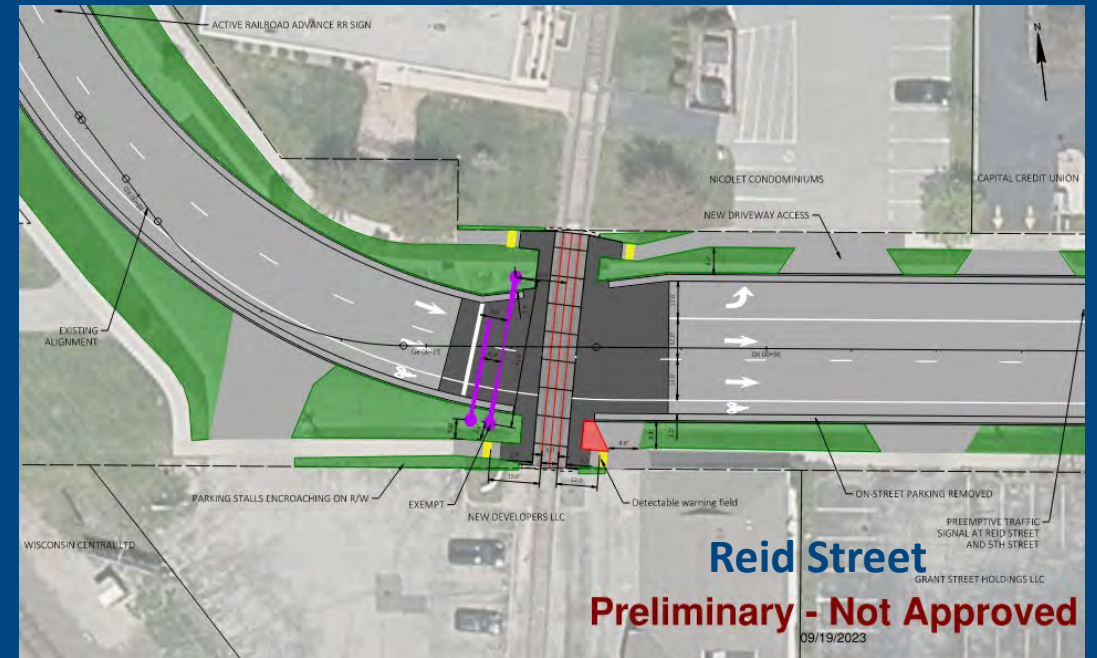
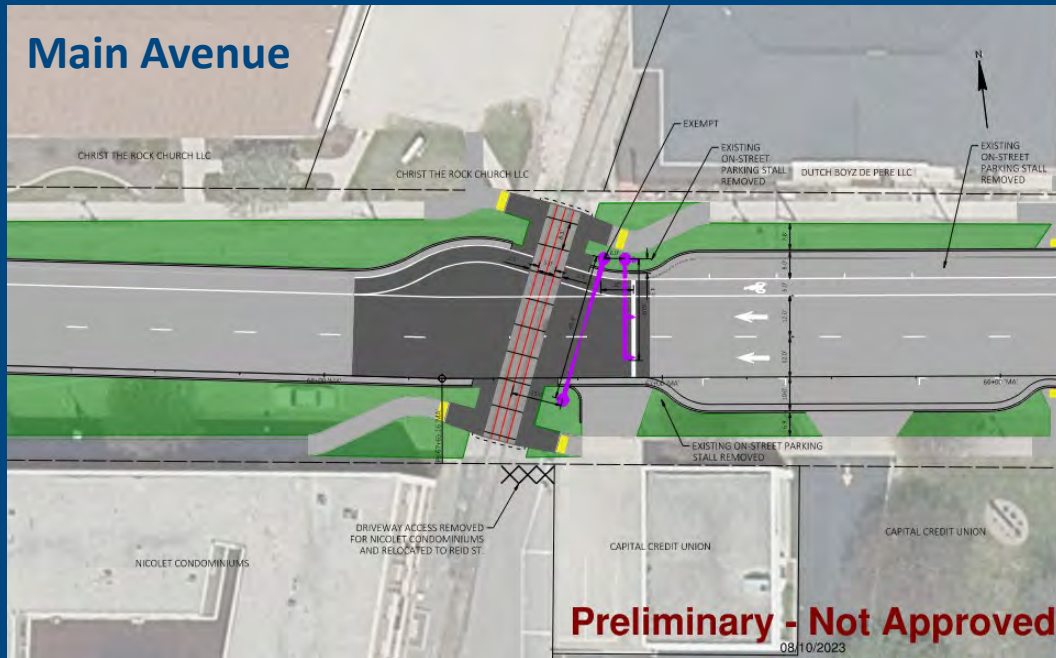
- Pork Chop Island Removal Proposed

- Traffic Operations/Lane Configuration
- Existing Large Truck Maneuverability
- Maintaining/Improving Pedestrian and Bike Accommodations





# At-Grade Railroad Crossing Improvements



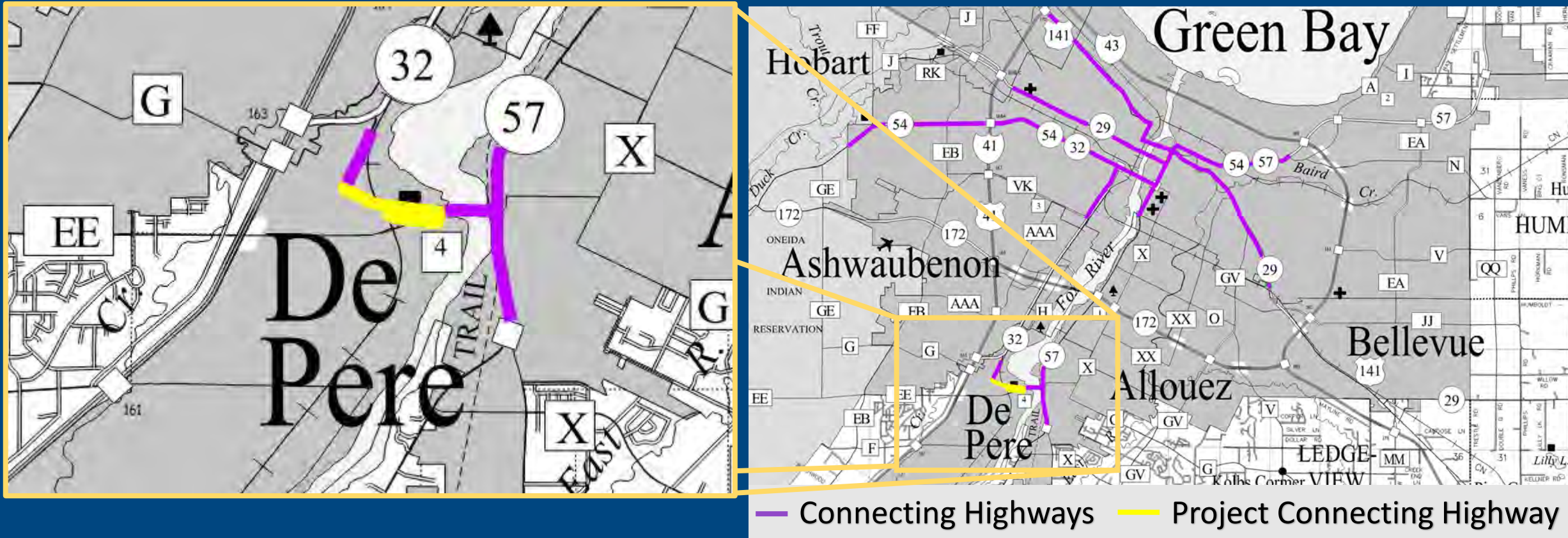
- Replace crossing surface
- Adding signals and gates
- ADA-compliant pedestrian crossings



# What is a Connecting Highway?

Connecting highways are local streets and roads that carry state highway travel through cities and villages.

- Connecting Highway Aids help local governments maintain these streets and roads at state trunk highway standards.
- WisDOT compensates local governments for the incremental costs of through-traffic routed over municipal streets.





# Funding Responsibilities

## WisDOT

- Roadway pavement
- Upgrading curb ramps for ADA compliance
- On-street bicycle accommodations
- Storm sewer
- Curb & gutter
- Signing needed for the safe movement of traffic

## City of De Pere

- Pavement maintenance
- Parking lanes
- Sidewalk
- Over-sizing of storm sewer
- Street lighting
- Public utilities
- Signing not needed for the safe movement of traffic
- Landscaping/Streetscaping





# Natural and Cultural Resources



Bicentennial Park



De Pere Library



Main Ave. Historic District





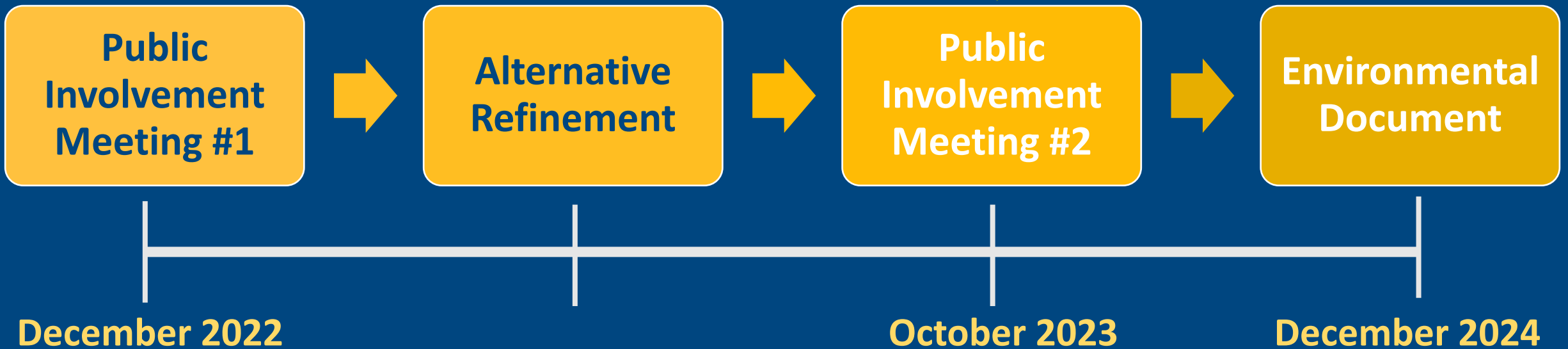
# Real Estate



- Avoid and Minimize
- Types
  - Temporary Limited Easement (TLE)
  - Permanent Acquisition (Fee)
- Locations
  - Curb Ramps
  - Grading Operations

# Next Steps

**WE ARE HERE**





# How to stay informed?

The screenshot shows the Wisconsin DOT website interface. At the top, there is a navigation bar with 'Agency Directory' and 'Online Services'. Below that is the 'State of Wisconsin Department of Transportation' header with social media icons. A main navigation menu includes 'DMV ONLINE SERVICES', 'DMV INFO', 'DOING BUSINESS', 'TRAVEL', 'SAFETY', 'PROJECTS AND STUDIES', and 'ABOUT WISDOT'. A search bar is present with the text 'Search Wisconsin DOT'. The main content area features a project titled 'WIS 32 Improvements - city of De Pere'. On the left, there are links for 'Northeast Region projects and studies' and 'WIS 32 design alternatives'. The main text describes the project and includes a 'NOTICE OF PUBLIC MEETING' section with details on when and where to attend. A 'Project location' section provides the specific address. To the right, there are two maps: 'Project Vicinity' showing the project location within Wisconsin and 'Project Location' showing a detailed aerial view of the project area with highlighted streets.

Wisconsin.GOV Agency Directory Online Services

State of Wisconsin  
Department of Transportation

DMV ONLINE SERVICES → DMV INFO → DOING BUSINESS → TRAVEL → SAFETY → PROJECTS AND STUDIES → ABOUT WISDOT →

Search Wisconsin DOT

## WIS 32 Improvements - city of De Pere

Northeast Region projects and studies  
WIS 32 design alternatives

The Wisconsin Department of Transportation (WisDOT) Northeast Region is in the process of investigating and developing alternatives for proposed improvements on 0.7 miles of WIS 32 in the city of De Pere, Brown County.

### NOTICE OF PUBLIC MEETING

Please join WisDOT at our public involvement meeting (PIM) for proposed improvements to WIS 32 (Main Avenue and Reid Street) in De Pere. Project staff will show the proposed alternatives, describe potential impacts to the community, and offer an opportunity for public comment. Following the presentation, the meeting will follow an open house format. Engineers will be available for one-on-one discussions as well.

#### WIS 32 Public Involvement Meeting

- **When:** 5 p.m., Wednesday, December 7, 2022
- **Where:** De Pere Community Center at 600 Grant Street, De Pere.
  - A brief presentation will begin at 5:15 p.m. The remainder of the meeting will follow an open house format.

**Project location**  
WIS 32 west of the Fox River in the city of De Pere between Eighth Street and the Claude Allouez Bridge.

Project Vicinity  
Project Location

<https://wisconsin.gov/Pages/projects/by-region/ne/32deper/default.aspx>



# Business Coordination

## We're In This Together!

- Visit [wisconsindot.gov/together](https://wisconsindot.gov/together)
  - Tips, tools and resources
  - New business coordination guide
- Project team is here to help
  - What information would help you...
    - Inform customers about the project?
    - Coordinate with suppliers?
    - Communicate with employees?



# Project Contacts

Joshua Lang, P.E.

WisDOT Project Manager

[joshua.lang@dot.wi.gov](mailto:joshua.lang@dot.wi.gov)

(920) 492-4141

Mark Kantola

WisDOT - Northeast Region

Communications Manager

[mark.kantola@dot.wi.gov](mailto:mark.kantola@dot.wi.gov)

(920) 492-4153



Thank You

