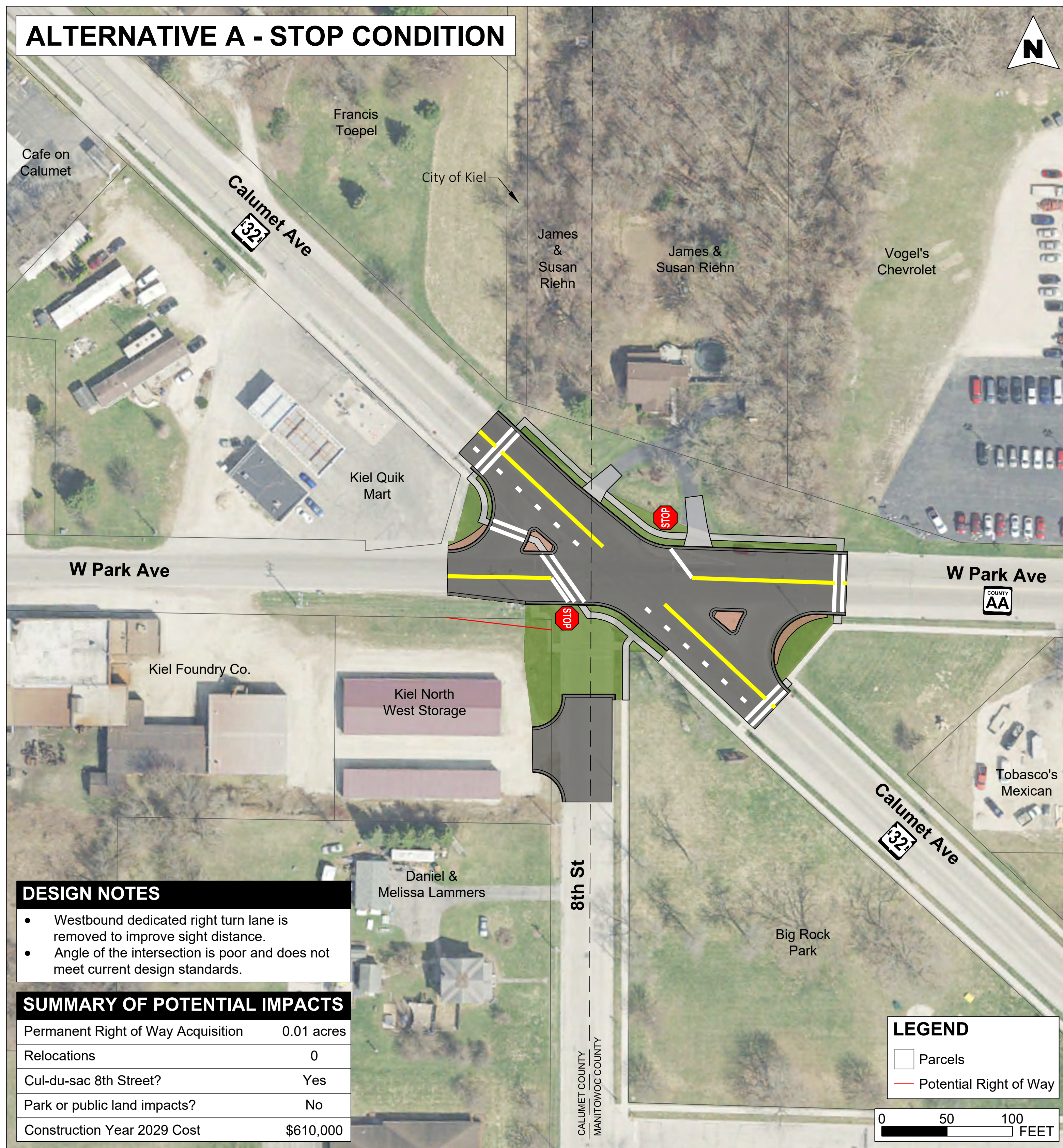


WIS 32 & COUNTY AA INTERSECTION ALTERNATIVES

NOVEMBER 2023

ALTERNATIVE A - STOP CONDITION



DESIGN NOTES

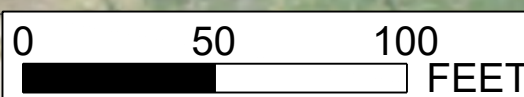
- Westbound dedicated right turn lane is removed to improve sight distance.
- Angle of the intersection is poor and does not meet current design standards.

SUMMARY OF POTENTIAL IMPACTS

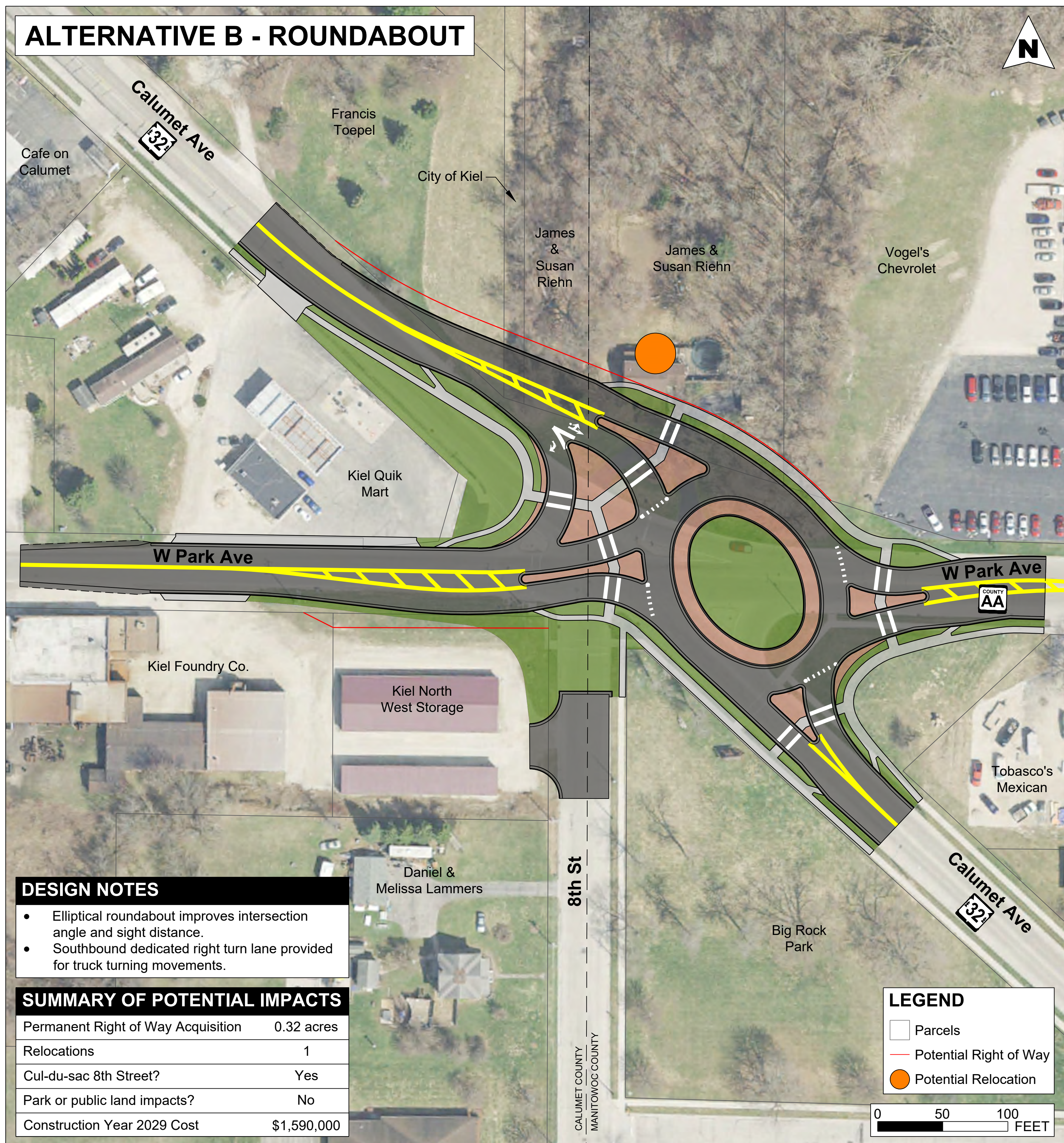
Permanent Right of Way Acquisition	0.01 acres
Relocations	0
Cul-du-sac 8th Street?	Yes
Park or public land impacts?	No
Construction Year 2029 Cost	\$610,000

LEGEND

- Parcels
- Potential Right of Way



ALTERNATIVE B - ROUNDABOUT



DESIGN NOTES

- Elliptical roundabout improves intersection angle and sight distance.
- Southbound dedicated right turn lane provided for truck turning movements.

SUMMARY OF POTENTIAL IMPACTS

Permanent Right of Way Acquisition	0.32 acres
Relocations	1
Cul-du-sac 8th Street?	Yes
Park or public land impacts?	No
Construction Year 2029 Cost	\$1,590,000

LEGEND

- Parcels
- Potential Right of Way
- Potential Relocation

