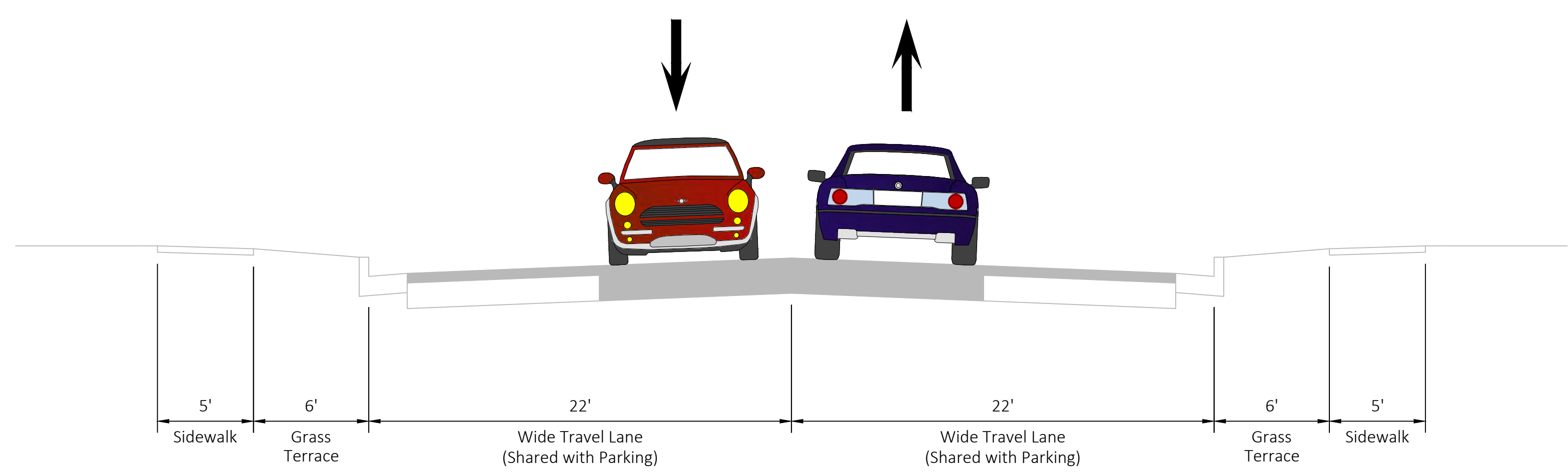
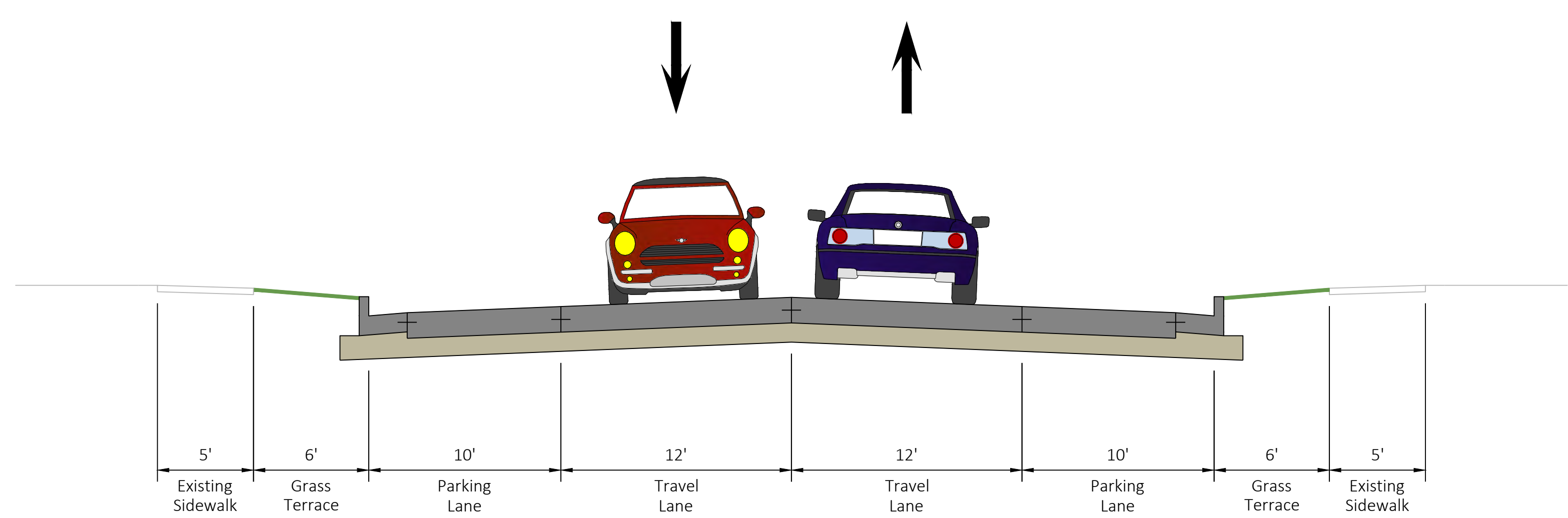


WIS 32 TYPICAL SECTIONS

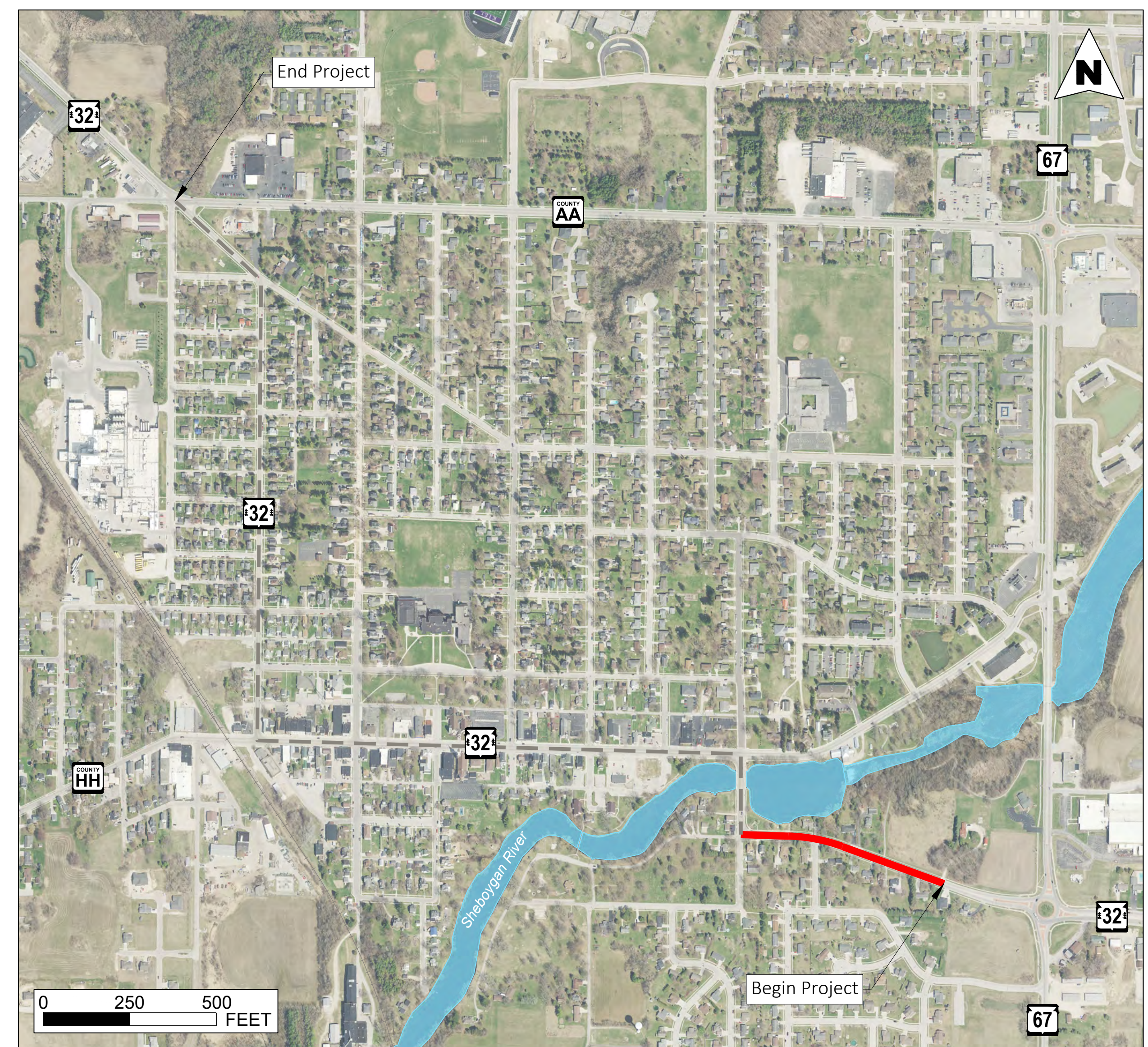
WATER STREET



Existing Typical Section



Potential Typical Section

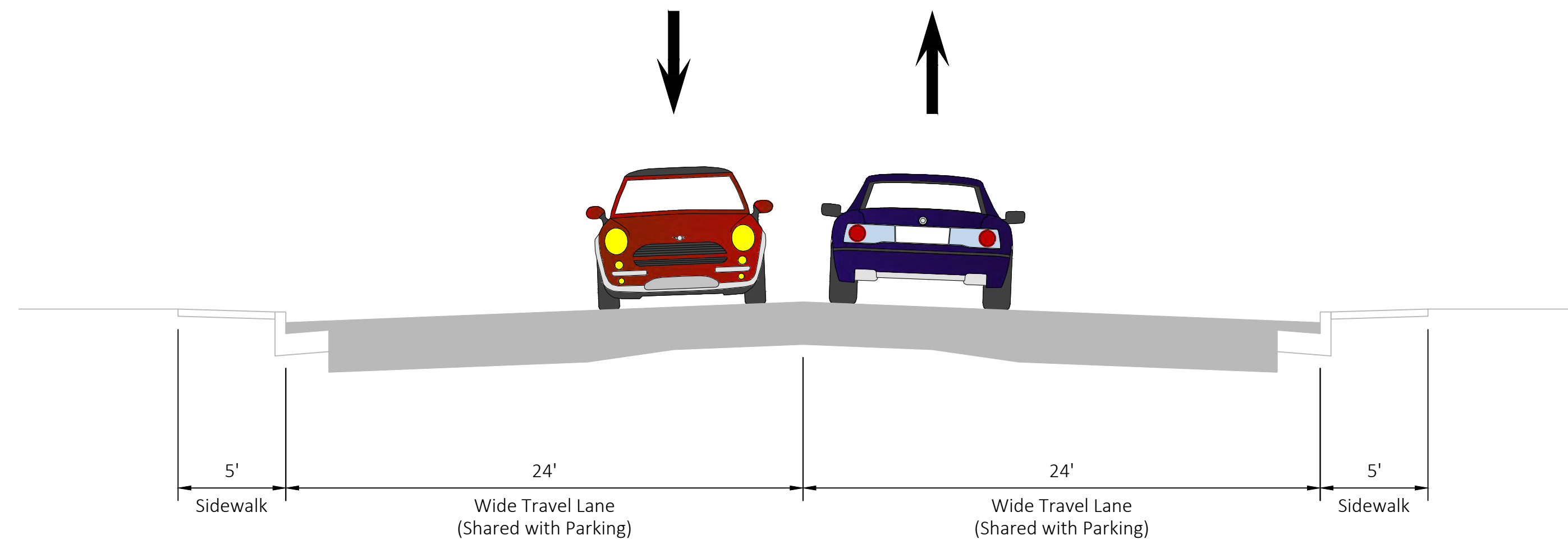


- DESIGN NOTES**
- Replacement of all curb ramps and driveway aprons
 - Designated and marked on-street parking
 - Existing sidewalk would remain in place (except at curb ramp and driveway replacement areas)
 - Providing on-street access to multi-use trail

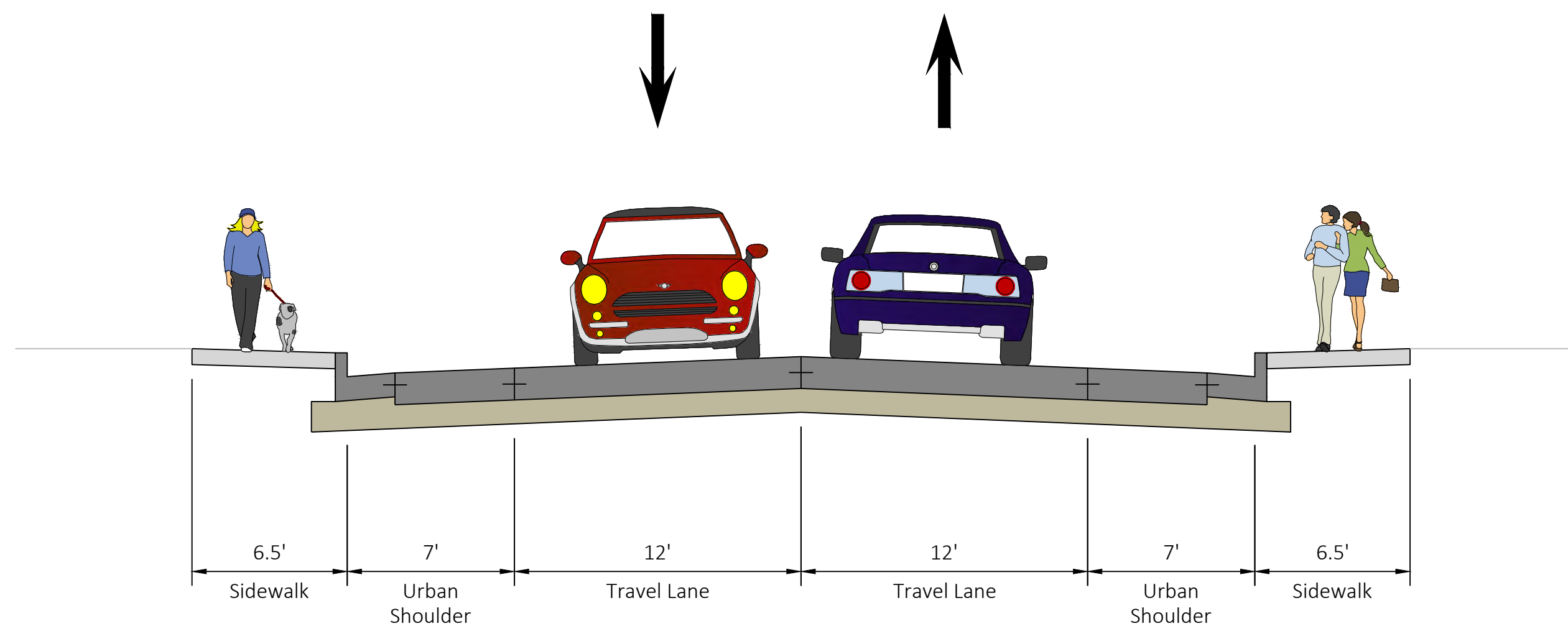
- POTENTIAL ENHANCEMENTS (CITY COST)**
- Full sidewalk replacement
 - Landscaping and/or streetscape elements
 - Continuous and/or decorative street lighting
 - Colored or special patterned cross walks

WIS 32 TYPICAL SECTIONS

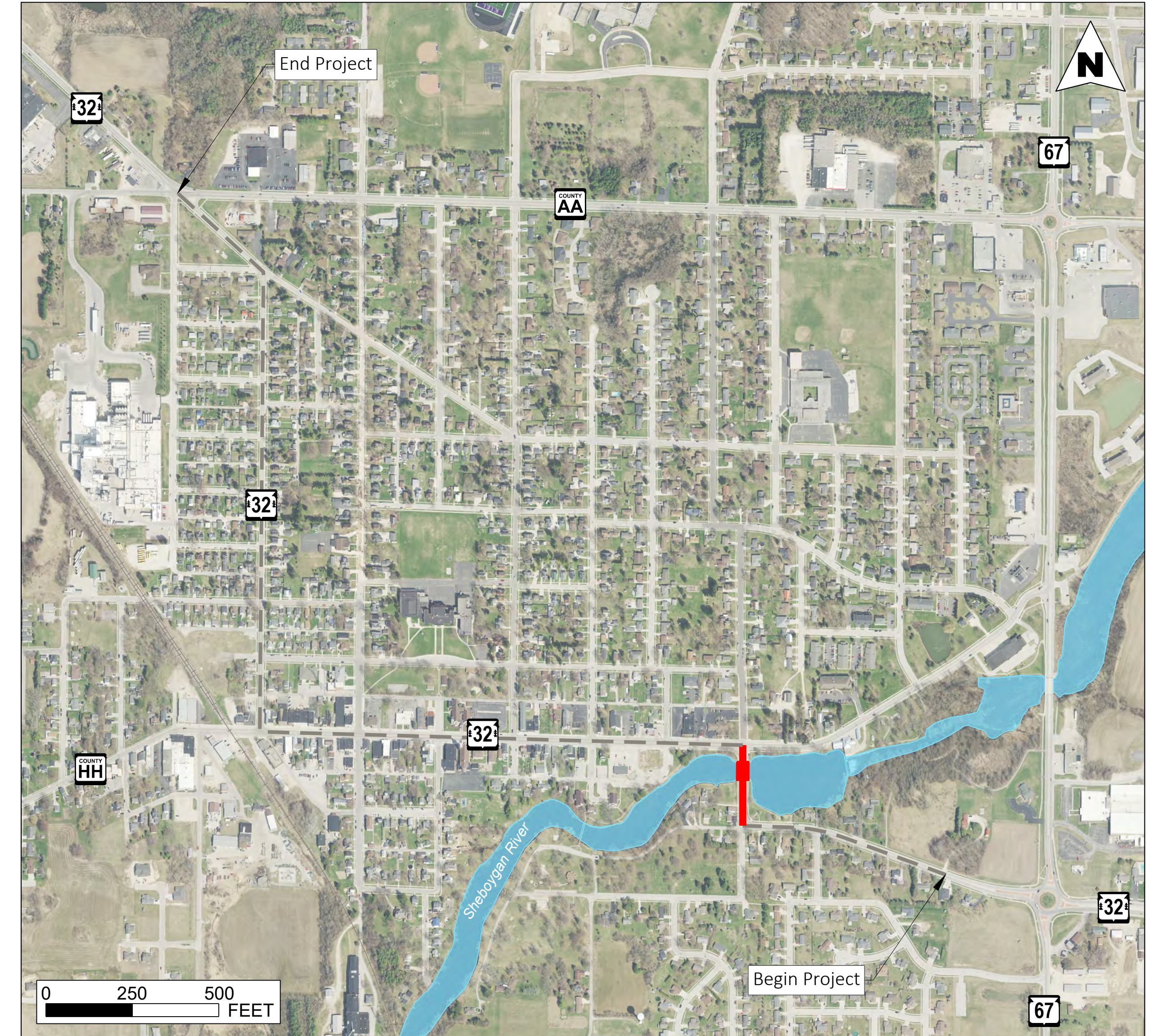
1st STREET



Existing Typical Section



Potential Typical Section



DESIGN NOTES

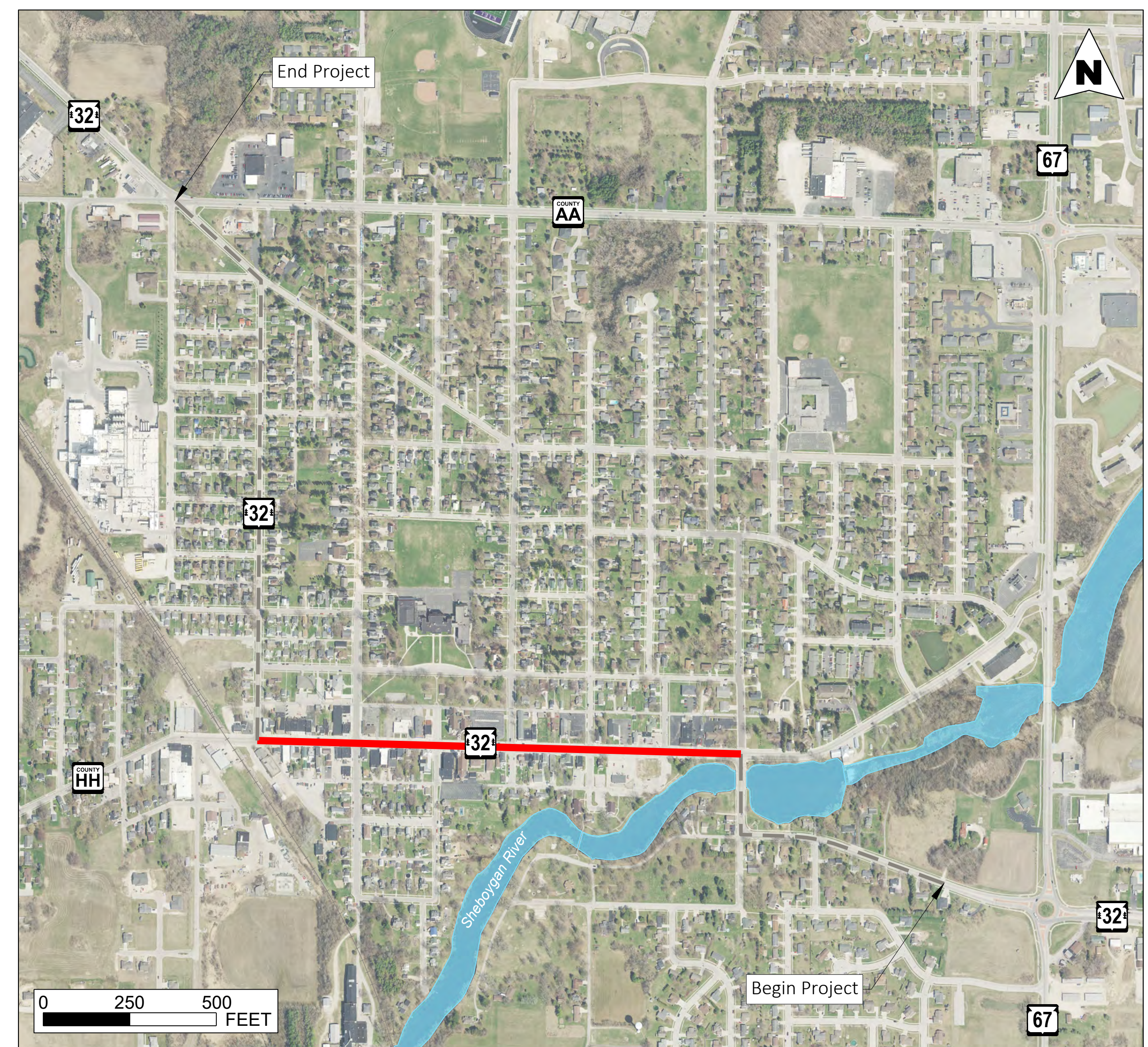
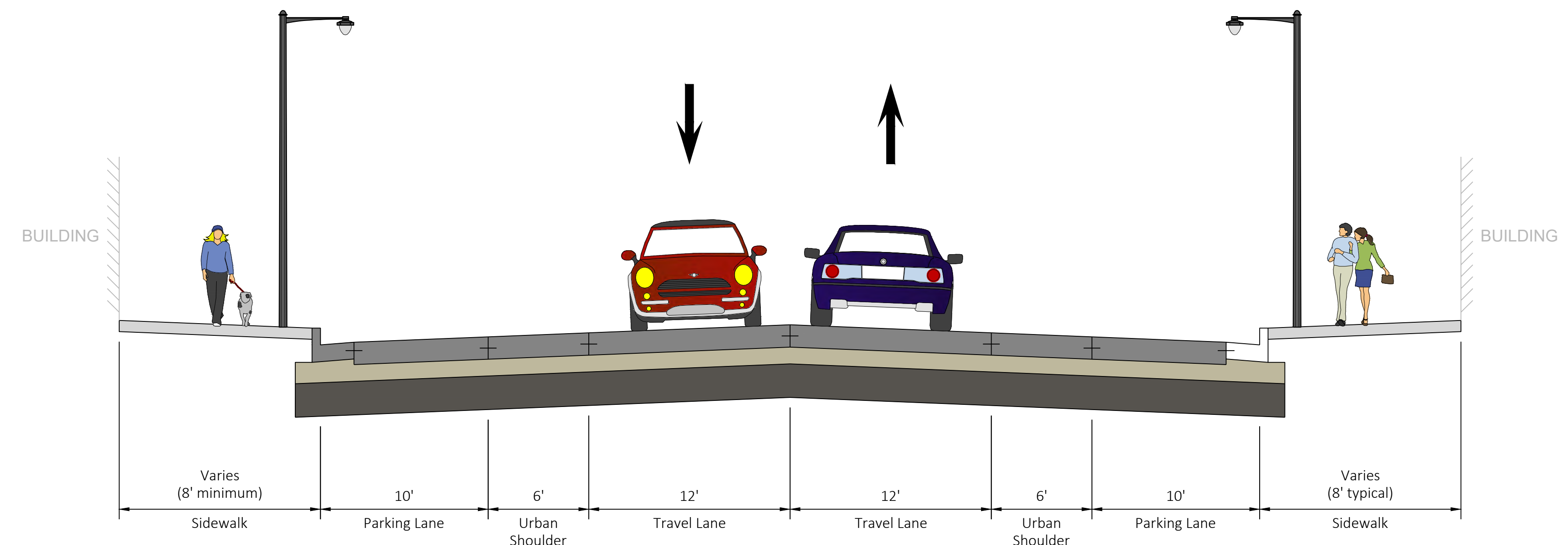
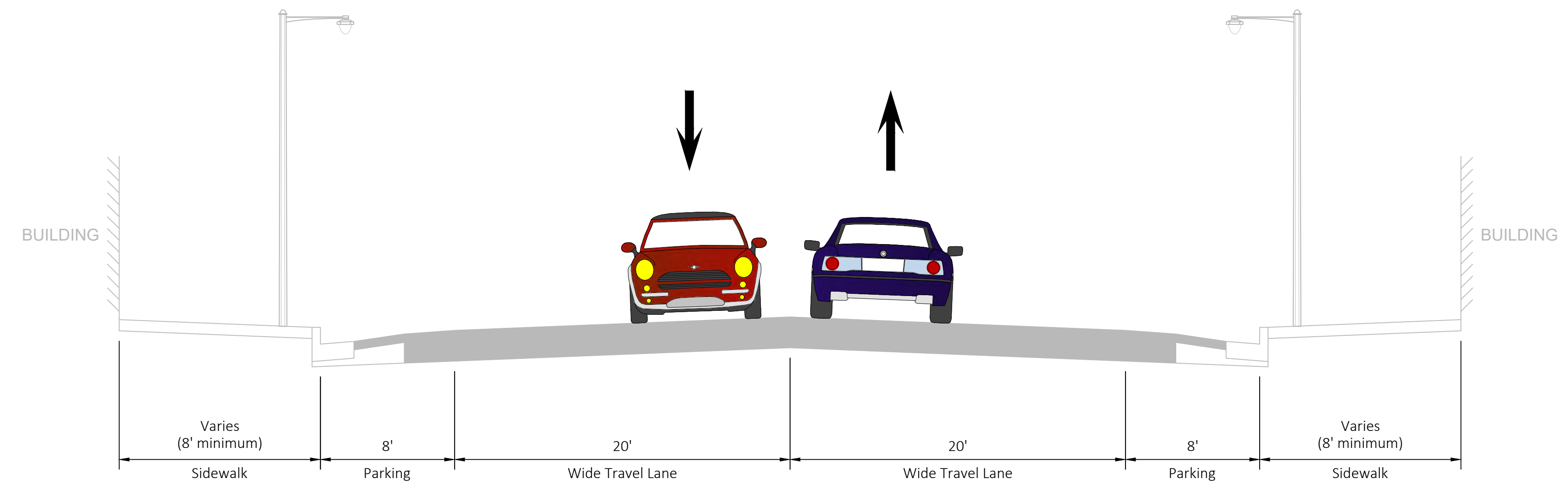
- Replacement of bridge over Sheboygan River (narrower width)
- Parking lane removed and parking prohibited to provide a safer transition to the bridge (matches bridge width)
- Replacement of all sidewalks, curb ramps, and driveway aprons
- Urban paved shoulders that will accommodate marked bike lanes

POTENTIAL ENHANCEMENTS (CITY COST)

- Aesthetic features on the bridge
- Landscaping and/or streetscape elements
- Continuous and/or decorative street lighting
- Colored or special patterned cross walks

WIS 32 TYPICAL SECTIONS

FREMONT STREET

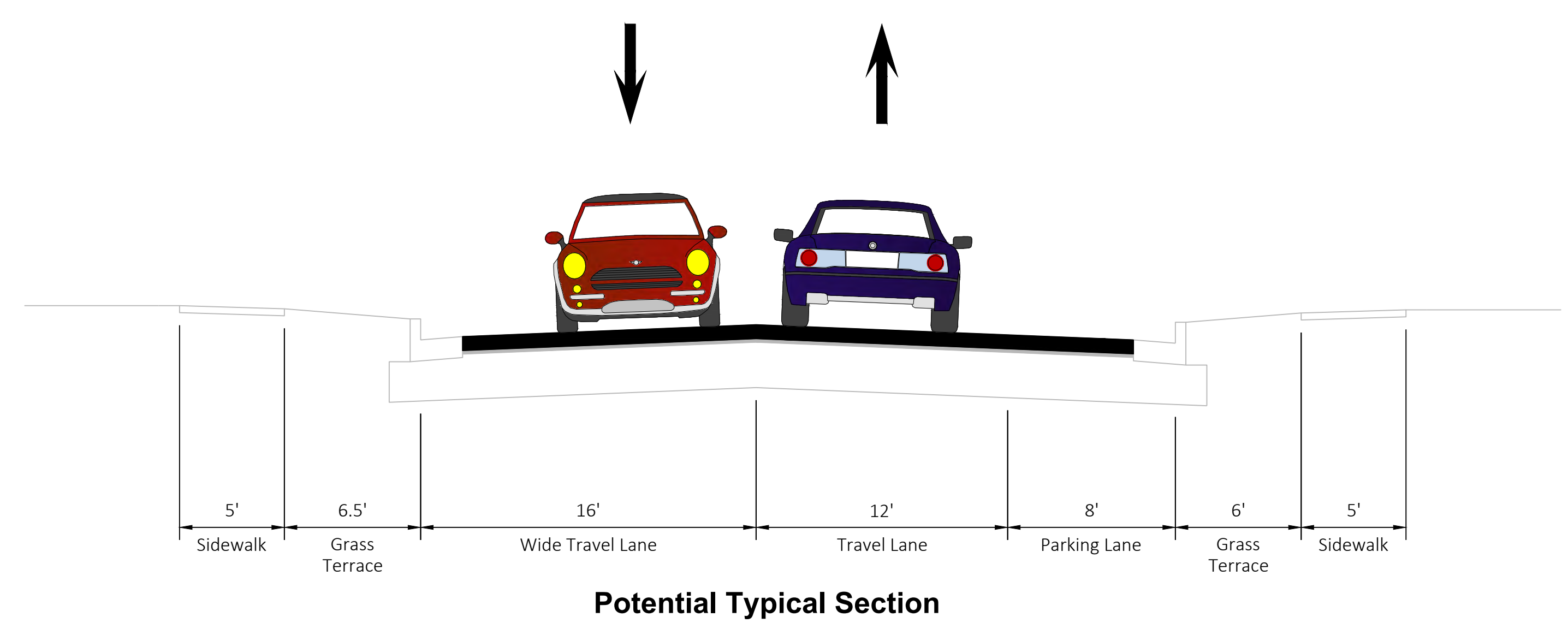
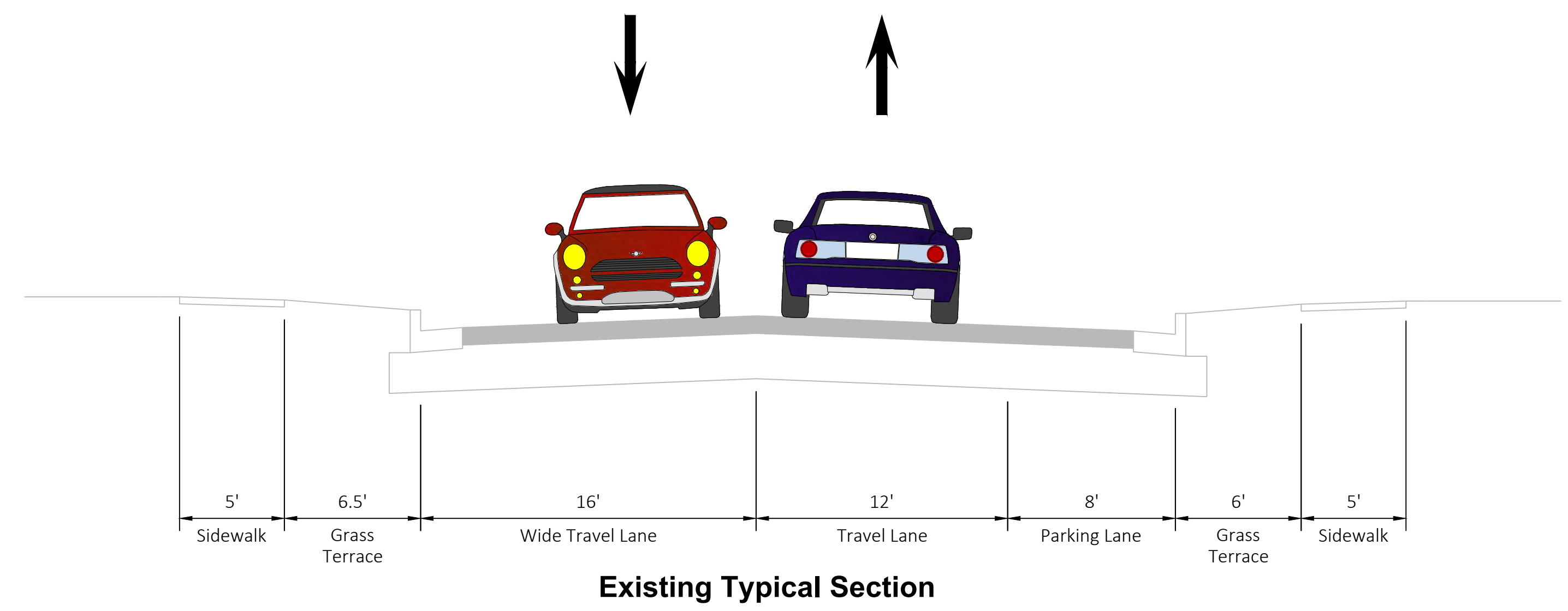


- DESIGN NOTES**
- Replacement of all sidewalks, curb ramps, and driveway aprons
 - Replacement of storm sewer and utilities
 - Widened designated and marked on-street parking
 - Urban paved shoulders that will accommodate marked bike lanes

- POTENTIAL ENHANCEMENTS (CITY COST)**
- Landscaping and/or streetscape elements
 - Decorative street lighting
 - Colored/decorative terraces at the back of curb
 - Colored or special patterned cross walks

WIS 32 TYPICAL SECTIONS

7th STREET & CALUMET AVENUE



- DESIGN NOTES**
- Asphaltic resurface
 - Replacement of all curb ramps
 - Existing sidewalk would remain in place (except at curb ramp replacement areas)
 - On-street parking would remain in place

- POTENTIAL ENHANCEMENTS (CITY COST)**
- Full sidewalk replacement
 - Driveway apron replacements
 - Continuous and/or decorative street lighting
 - Colored or special patterned cross walks