

WIS 54 Project Update

Tim Rank, Project Manager

WisDOT
October 2020



WIS 54

- Overview

- Proposed Project Scope/Need
- Proposed Improvements
- Right-of-way Needs
- Traffic Control
- Schedule
- Resources
- Project Contacts

WIS 54

Proposed Project Scope/Need

- Projects 6230-14-71 and 6230-14-72 include 11.3 miles of WIS 54 from Park Avenue to French Road, between Shiocton and Seymour in Outagamie County (will be built together)
- Last improvement project took place in 1998

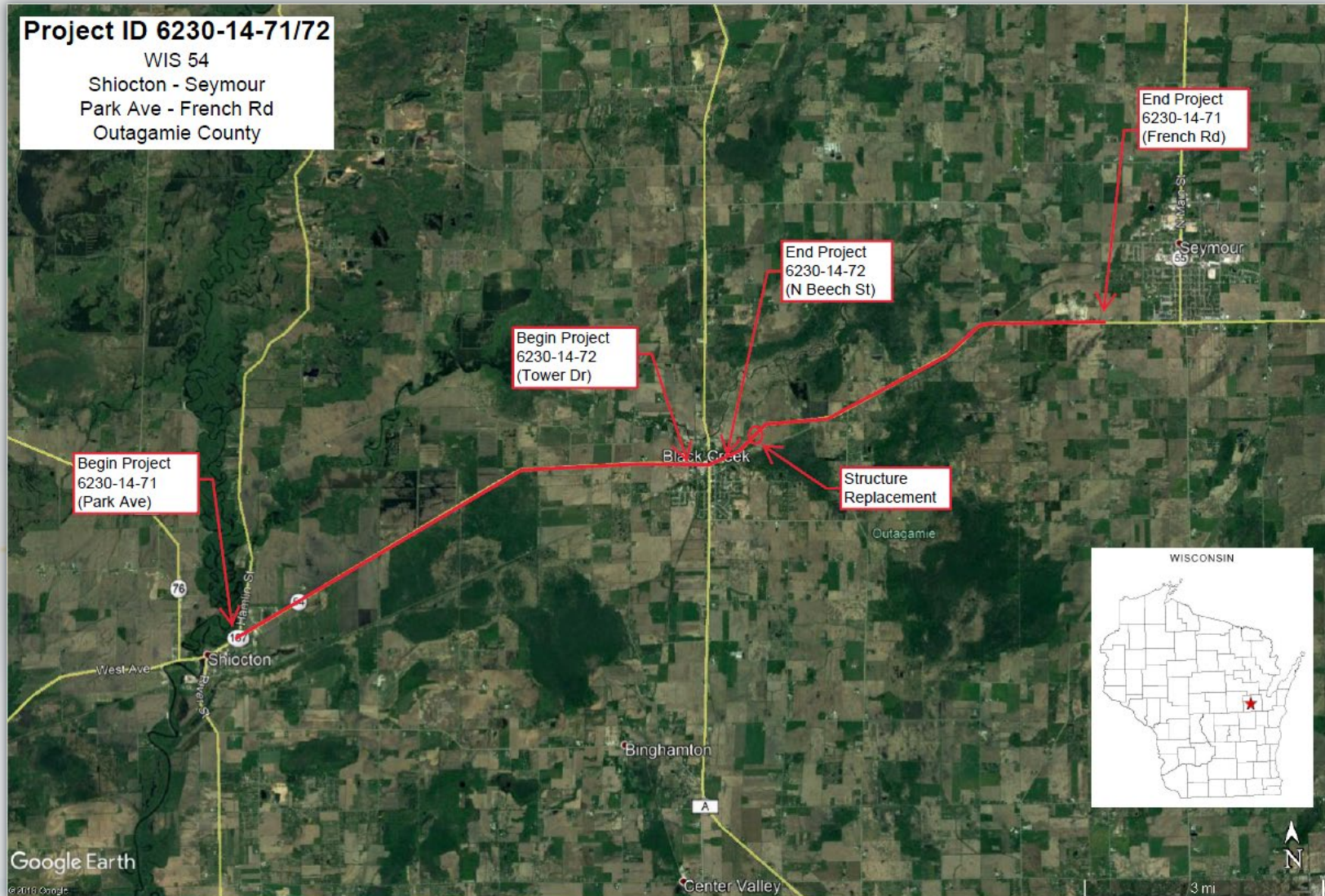
WIS 54

Proposed Project Scope/Need

- Existing pavement surface is deteriorating
- Existing curb and gutter and storm sewer in Black Creek needs spot repairs
- Existing curb ramps in Black Creek are currently not Americans with Disabilities Act (ADA) compliant.
- Existing slab span bridge 1 mile east of Black Creek has reached its service life

WIS 54

Proposed Project Scope/Need



WIS 54

Proposed Improvements

- 6230-14-71 (Park Ave – French Road)
 - Resurface level improvement: mill and overlay, widen existing 3-foot paved shoulders to 5-foot paved shoulders
 - Culvert pipe replacements - multiple locations
 - Structure and beam guard replacement – located approximately 1 mile east of Black Creek
 - Centerline/shoulder rumble strips
 - Pavement marking
- Additional project information, including project displays, can be found at the design website listed on the Resources slide.

WIS 54

Proposed Improvements

- 6230-14-72 (Tower Dr – N Beech St)
 - Resurface level improvement: mill and overlay within the existing pavement footprint
 - Curb & gutter spot repairs
 - Spot repairs of existing storm sewer
 - Curb ramp improvements at four intersections within Black Creek
 - Traffic signal modifications
 - Pavement marking
- Additional project information, including project displays, can be found at the design website listed on the Resources slide.

WIS 54

Right-of-way Needs

■ Temporary Limited Easements (TLE)

- Will be needed at most curb ramp improvement locations within the village of Black Creek to allow grading and blending in of adjacent properties

■ Permanent (Fee)

- Will be needed at some curb ramp improvement locations in the village of Black Creek due to upgrade the curb ramps to current ADA standards

WIS 54 Traffic Control



- Work expected to take place under daytime flagging operations with single lane closures
- Road will remain open to traffic during construction for the majority of the project except for the following:
 - Initial detour will be needed for culvert replacements between Shiocton and Black Creek, and for storm sewer repair at WIS 54/WIS 47 intersection. Duration: Approximately 1 month.
 - Tentative detour = WIS 76 to County A to WIS 47 to County B to County PP
 - Second detour will be needed for bridge construction east of Black Creek. Duration: Up to 3 months.
 - Tentative detour = WIS 47 to County B to County PP

WIS 54 Schedule

- Additional public outreach will be conducted in early 2021 to provide updates prior to real estate acquisition and final design.
- Real estate acquisition will begin in 2021.
- Design is on-going and will continue through the spring of 2022.
- Construction is tentatively scheduled for 2023.

WIS 54 Resources



- Design website

<https://wisconsindot.gov/Pages/projects/by-region/ne/wis54outagamie/default.aspx>

- See website for comment sheet and exhibits
- Track the project during construction on the WisDOT Northeast Region Construction Website
 - <https://projects.511wi.gov/region/northeast>
- In This Together
 - Recognizes businesses located in work zones have special needs
 - The program is offered to business and community leaders as an idea source as they plan for road construction in their area
 - Find out more at: <http://wisconsindot.gov/Pages/projects/in-together/default.aspx>

WIS 54

Project Contacts

Tim Rank, P.E.

Project Manager

WisDOT NE Region

944 Vanderperren Way

Green Bay, WI 54304

Phone: (920) 360-2579

Email: tim.rank@dot.wi.gov