

Hudson & Menomonie Safety & Weight Facilities (SWEFs)

Public Involvement Meeting

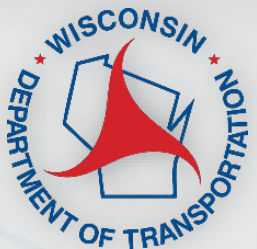
Robert Knorr, P.E. (WisDOT)

Joshua Melby, P.E. (KL Engineering)

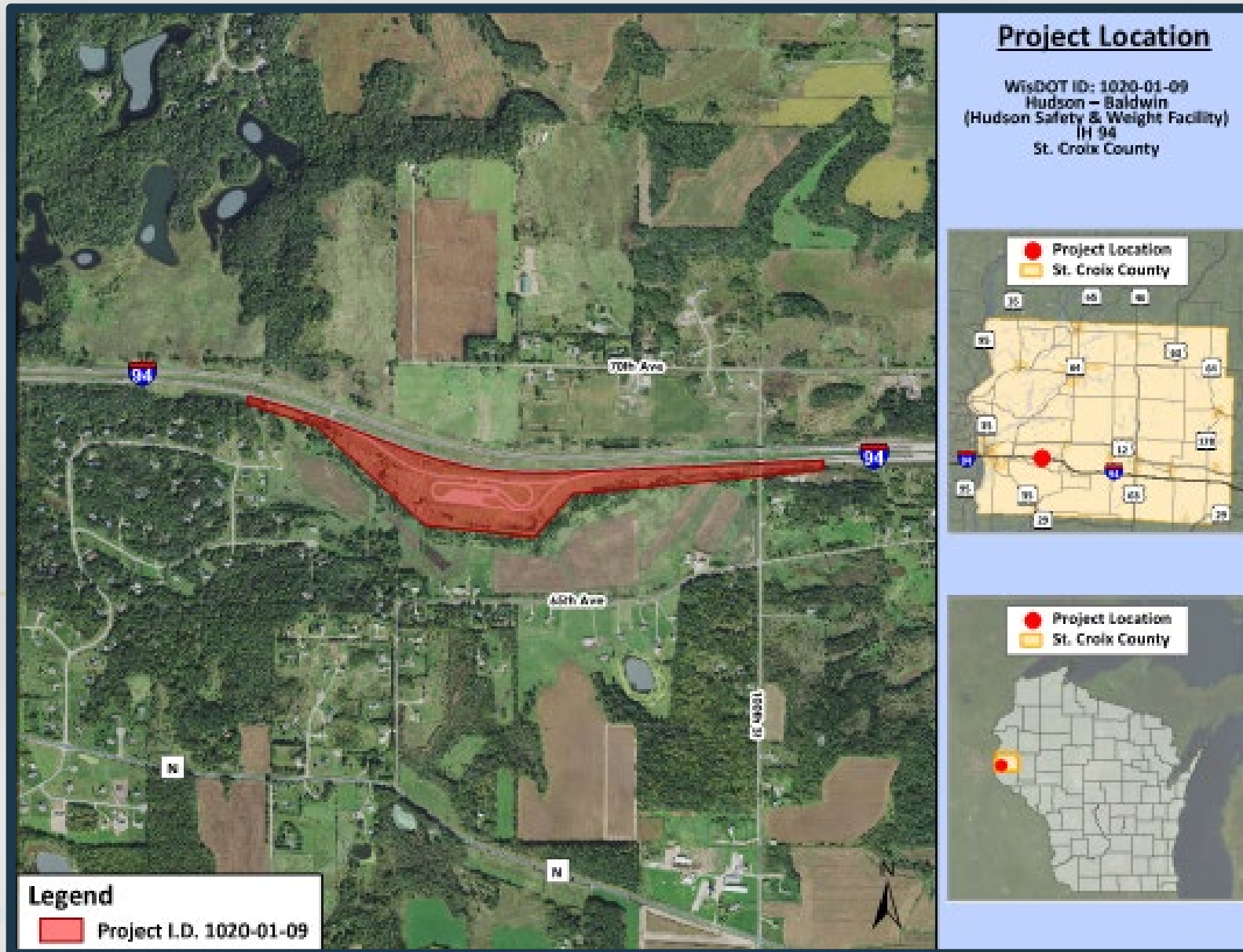
Hudson SWEF
(Hudson – Baldwin)
I-94, St. Croix County

Menomonie SWEF
(Menomonie – Eau Claire)
I-94, Dunn County

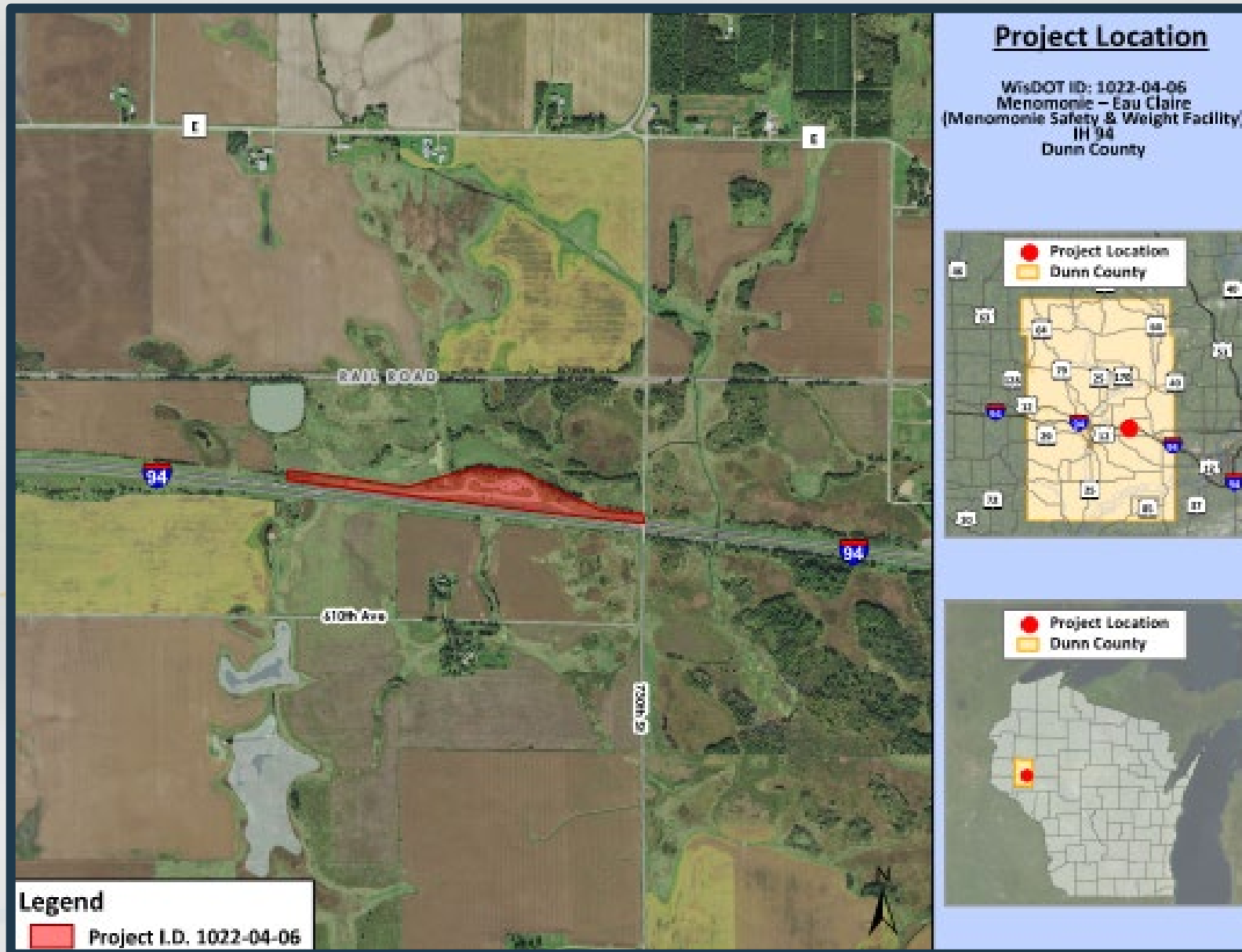
August 2020



Project Overview (Hudson SWEF)



Project Overview (Menomonie SWEF)



Purpose of SWEFs

- Ensure safe commercial motor vehicle (CMV) operation
- Monitor operator/carrier compliance with laws and regulations
- Protect public infrastructure



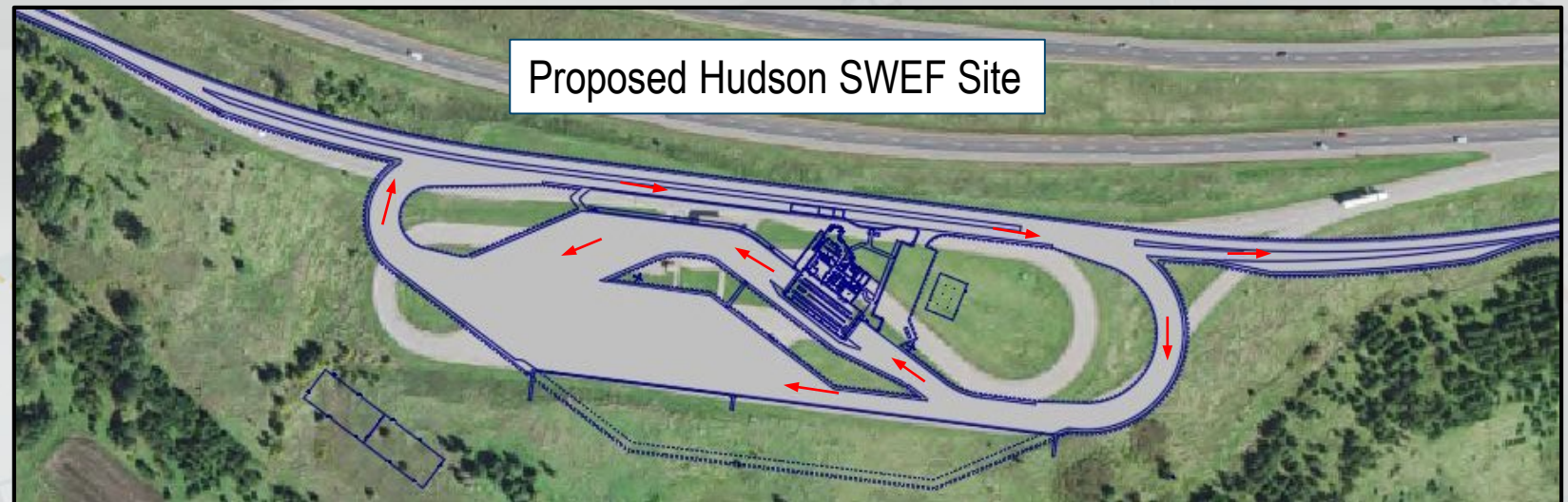
Purpose & Need (Hudson SWEF)

- Replace deteriorating facilities & infrastructure



Purpose & Need (Hudson SWEF)

- Improve site efficiency



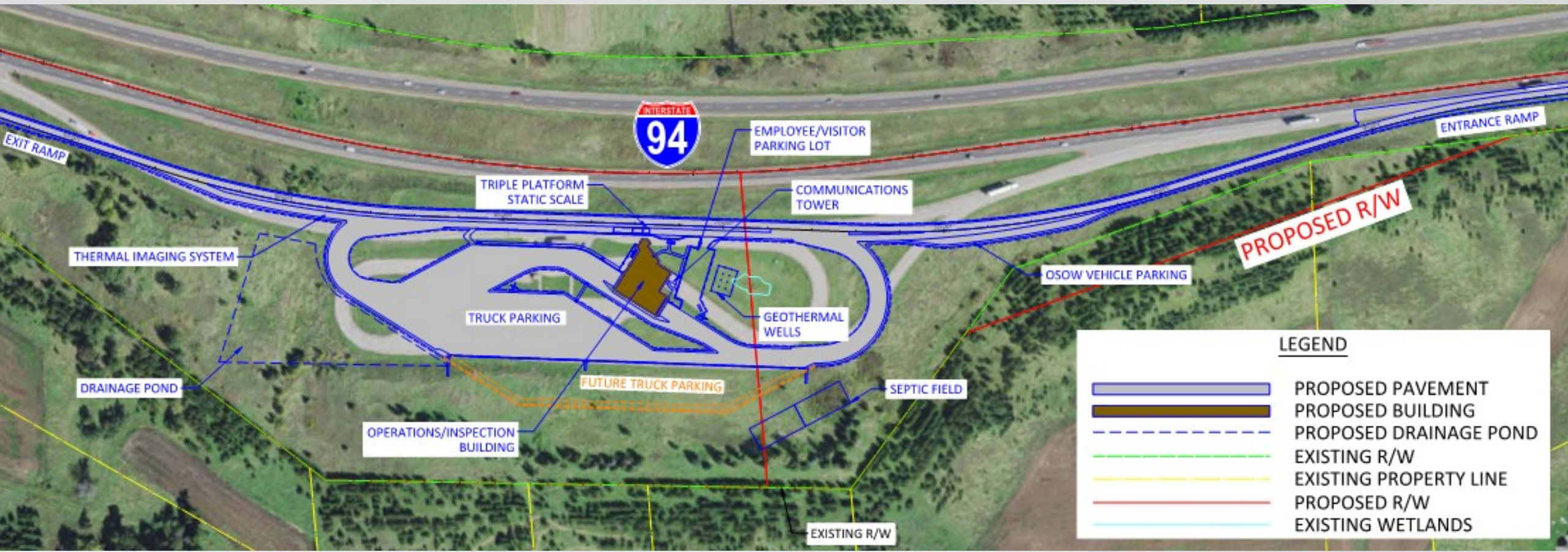
Purpose & Need (Hudson SWEF)

- Improve work conditions



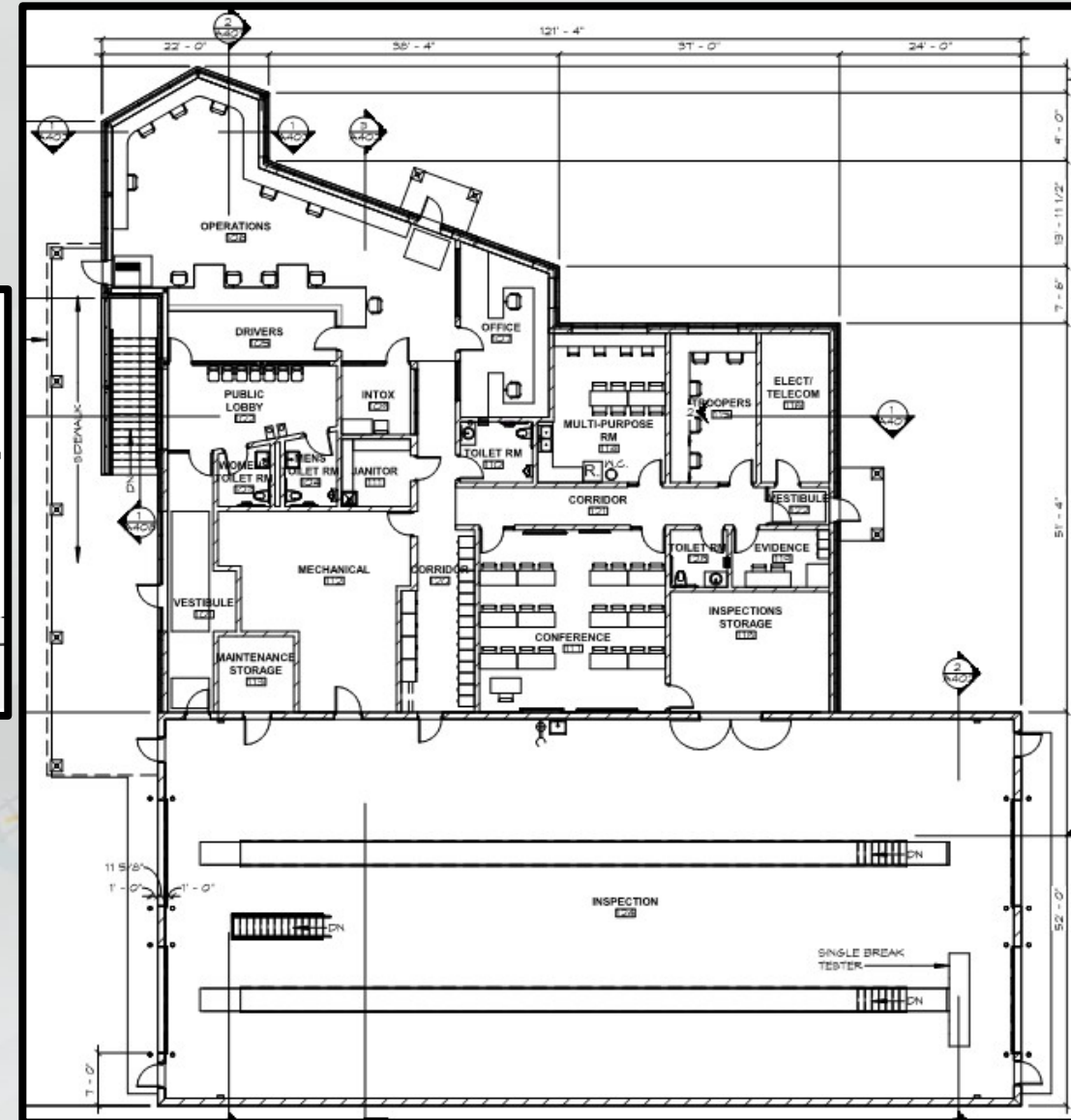
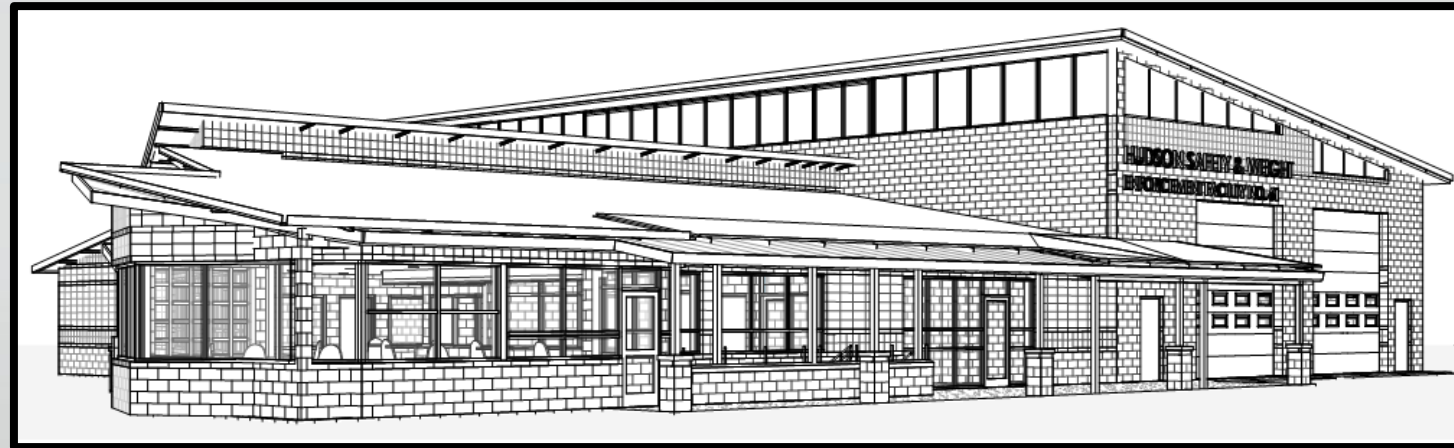
Project Improvements (Hudson SWEF)

- New modern SWEF building
- Parking lots and ramp/loop roadways
- Automated truck traffic monitoring system



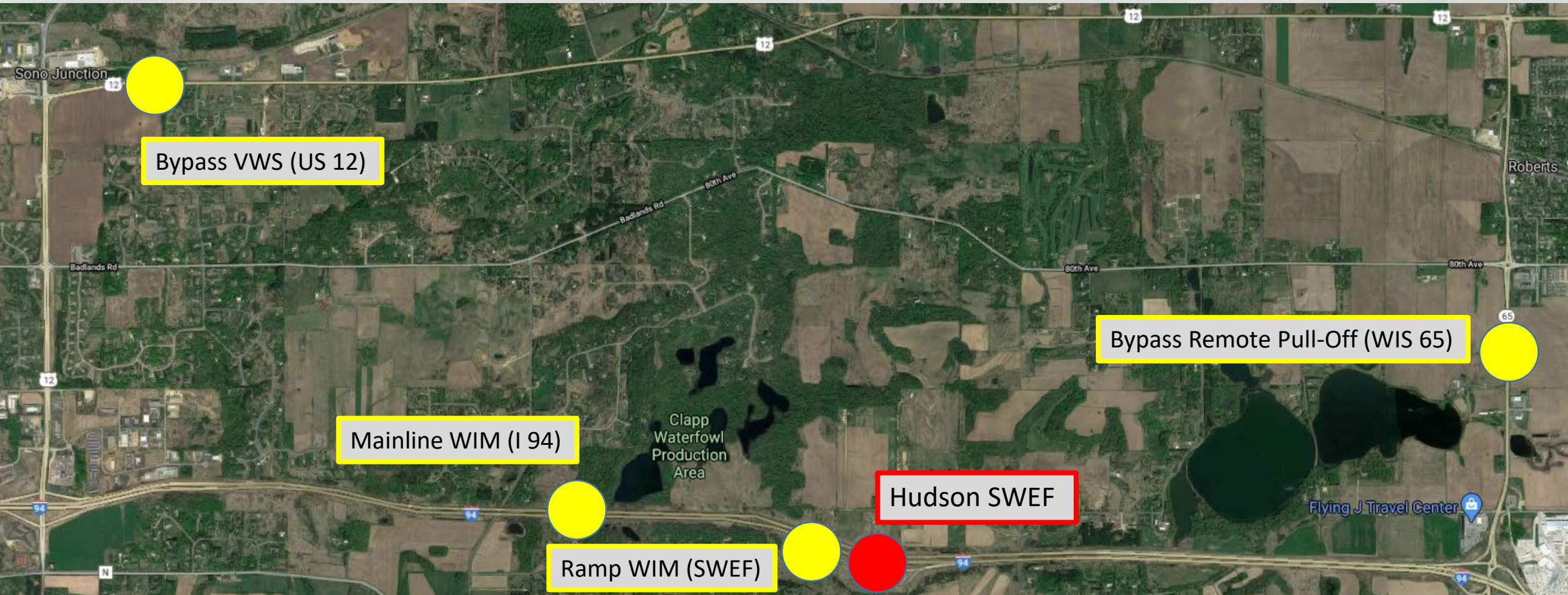
Project Improvements (Hudson SWEF)

- New modern SWEF building
 - Operations
 - Inspection



Project Improvements (Hudson SWEF)

- Automated truck traffic monitoring system
 - Mainline and ramp weigh-in-motion (WIM) system
 - Virtual weigh station (VWS) with remote inspection pull-off site



Purpose & Need (Menomonie SWEF)

- Expand and renovate existing SWEF building



Purpose & Need (Menomonie SWEF)

- Replace deteriorated pavement



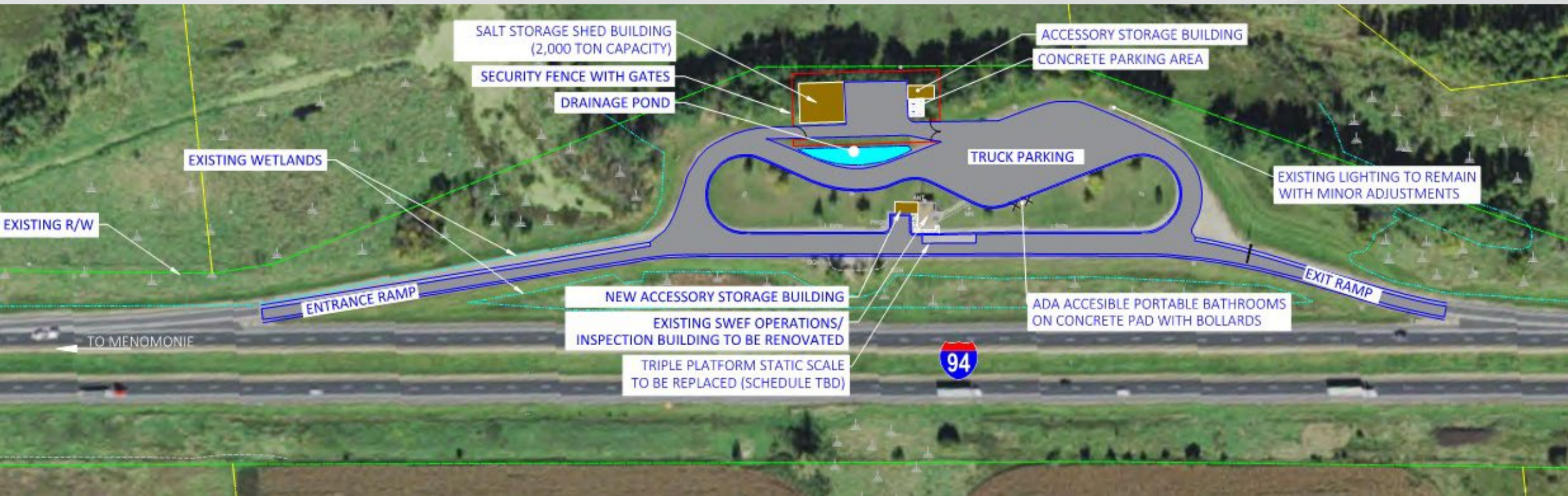
Purpose & Need (Menomonie SWEF)

- Construct road salt storage facility



Project Improvements (Menomonie SWEF)

- Existing SWEF building and accessory storage
- Parking lots and ramp/loop roadways
- Road salt storage facility
- Virtual weigh station



Project Schedule

- **30% Conceptual Plans** (Completed March 2020)
- **60% Preliminary Plans** (October 2020)
- **Environmental Document** (October 2020)
- **Real Estate Acquisition** (November 2020 – February 2022)
- **Utility Coordination** (December 2020 – May 2021)
- **Final Plans and Bid Packages** (February 2022)
- **Hudson SWEF Construction** (2022-2023)
- **Menomonie SWEF Construction** (2024)

Project Website

<https://wisconsindot.gov/Pages/projects/by-region/nw/i94swef/default.aspx>

The screenshot shows the Wisconsin Department of Transportation website. At the top left is the logo for Wisconsin.gov. To the right are links for 'Agency Directory' and 'Online Services'. Below this is a banner image of a DOT building with the text 'State of Wisconsin Department of Transportation' and social media icons for Facebook, Twitter, YouTube, and RSS. A navigation menu contains: 'DMV ONLINE SERVICES', 'DMV INFO', 'DOING BUSINESS', 'TRAVEL', 'SAFETY', 'PROJECTS AND STUDIES', and 'ABOUT WISDOT'. A search bar is labeled 'Search Wisconsin DOT'. The main content area features the title 'I-94, Hudson and Menomonie Safety and Weight Enforcement Facilities' and a 'Northwest Region' button. Under the heading 'Location', there are two paragraphs: 'Hudson Safety and Weight Enforcement Facility: The existing SWEF, built in 1993, is about 5.5 miles east of Hudson off eastbound I-94.' and 'Menomonie Safety and Weight Enforcement Facility: The existing SWEF, built in 1984, is about five miles east of Menomonie off westbound I-94.'

Wisconsin.GOV Agency Directory Online Services

State of Wisconsin
Department of Transportation

DMV ONLINE SERVICES ▾ DMV INFO ▾ DOING BUSINESS ▾ TRAVEL ▾ SAFETY ▾ PROJECTS AND STUDIES ▾ ABOUT WISDOT ▾

Search Wisconsin DOT

I-94, Hudson and Menomonie Safety and Weight Enforcement Facilities

Northwest Region

Location

Hudson Safety and Weight Enforcement Facility: The existing SWEF, built in 1993, is about 5.5 miles east of Hudson off eastbound I-94.

Menomonie Safety and Weight Enforcement Facility: The existing SWEF, built in 1984, is about five miles east of Menomonie off westbound I-94.

Questions or Comments?



Robert Knorr, P.E.

WisDOT Project Manager

(608) 266-8677

robert.knorr@dot.wi.gov

Aaron Steger, P.E.

Consultant Project Manager

(608) 663-1218

asteger@klengineering.com

Joshua Melby, P.E.

Consultant Project Engineer

(608) 663-1218

jmelby@klengineering.com