



This presentation is for the project on US 10 from Prescott to Ellsworth, Pierce County.

Rather than holding an in-person meeting, public involvement efforts have moved online as a precaution against COVID-19 based on the most current health information from state, federal and local health departments.

All meeting materials, including the handout with a comment form, are posted on the design website for this project.

<https://wisconsindot.gov/Pages/projects/by-region/nw/us10pierce/default.aspx>

If you have any questions, please contact WisDOT Project Manager, Paula Groom at (715) 579-6776.



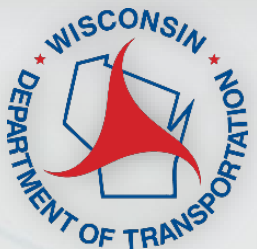
Public Involvement Meeting

US 10

Spring Creek Culverts
Pierce County

US 10

Prescott - Ellsworth
Pierce County





Project Team

- James Koenig
 - WisDOT Project Supervisor
- Paula Groom
 - WisDOT Project Manager
- Julie Martin
 - WisDOT Real Estate Specialist
- Brad Halvensleben
 - Consultant Project Manager (KL Engineering, Inc.)



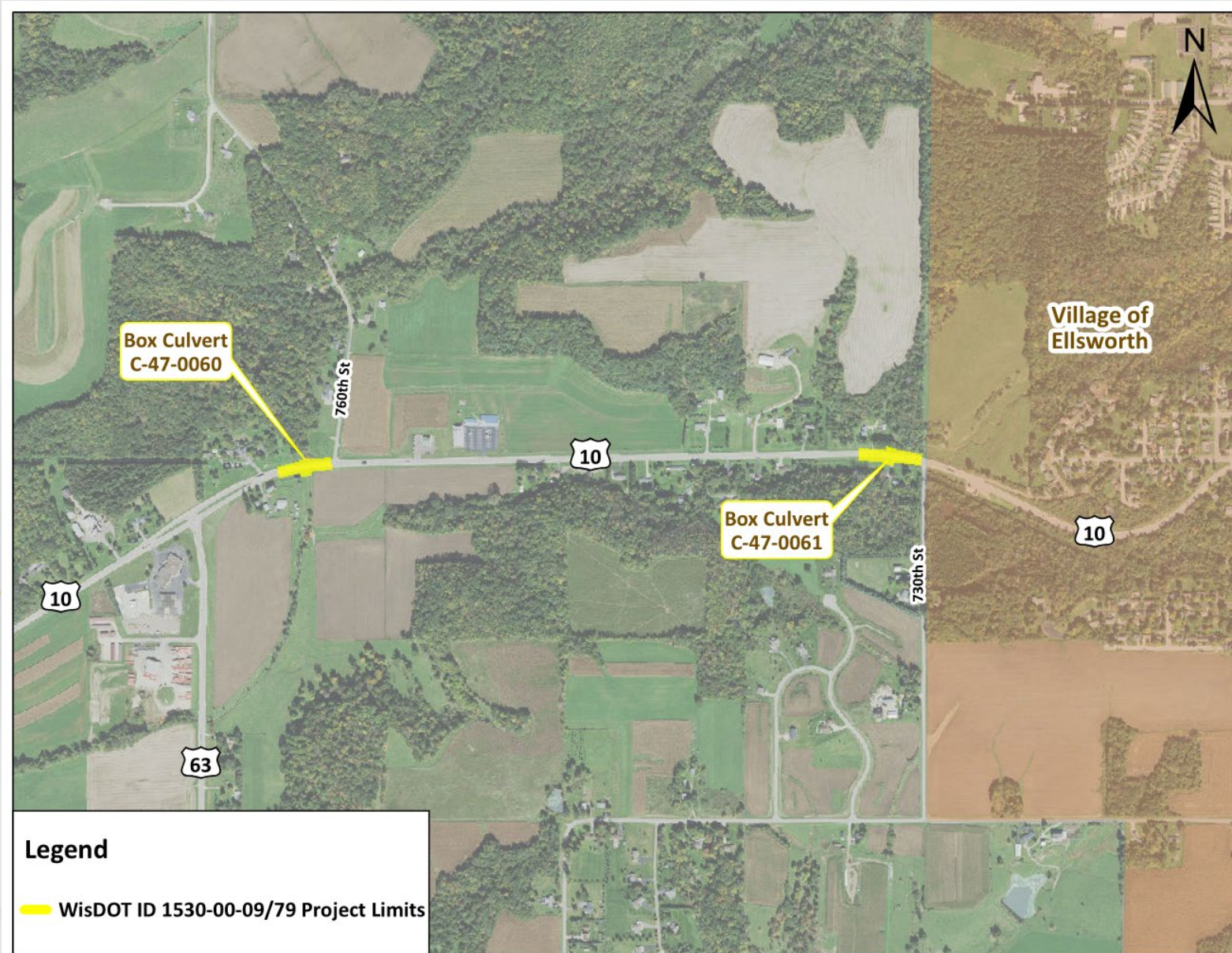


Presentation Agenda

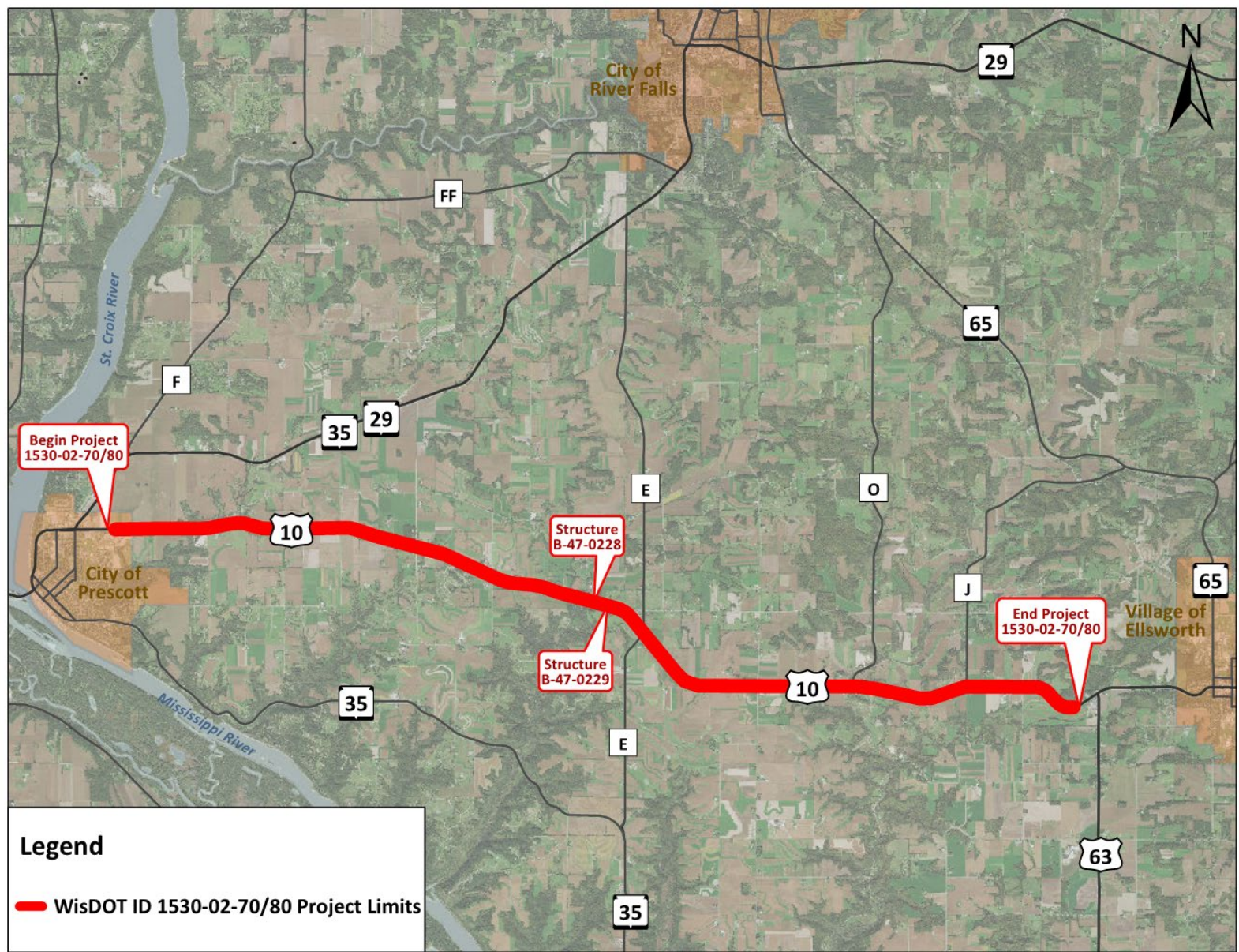
- Project Location
- Project Purpose and Need
- Proposed Improvements
- Detour Route/Construction Staging
- Real Estate
- Project Schedule
- Contact Information



Spring Creek Culverts Project Location



US 10 Rehabilitation Project Location





Purpose and Need

- Purpose

- Improve US 10 pavement condition
- Replace aging culverts
- Upgrade beam guard to meet current standards

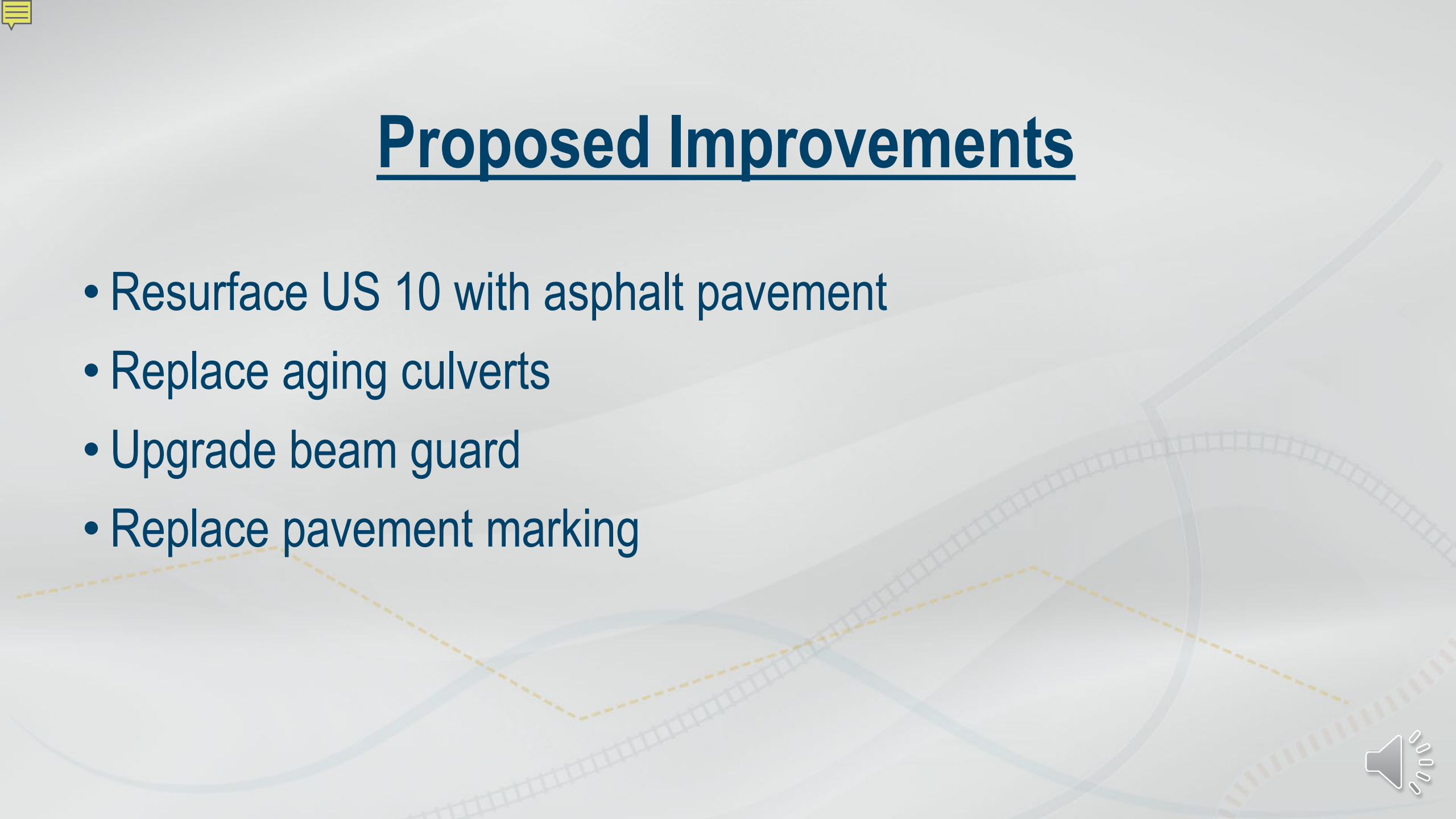
- Need

- Deteriorating pavement condition
- Existing culverts have reached the end of their service lives
- Non-compliant beam guard





Proposed Improvements

- Resurface US 10 with asphalt pavement
 - Replace aging culverts
 - Upgrade beam guard
 - Replace pavement marking
- 



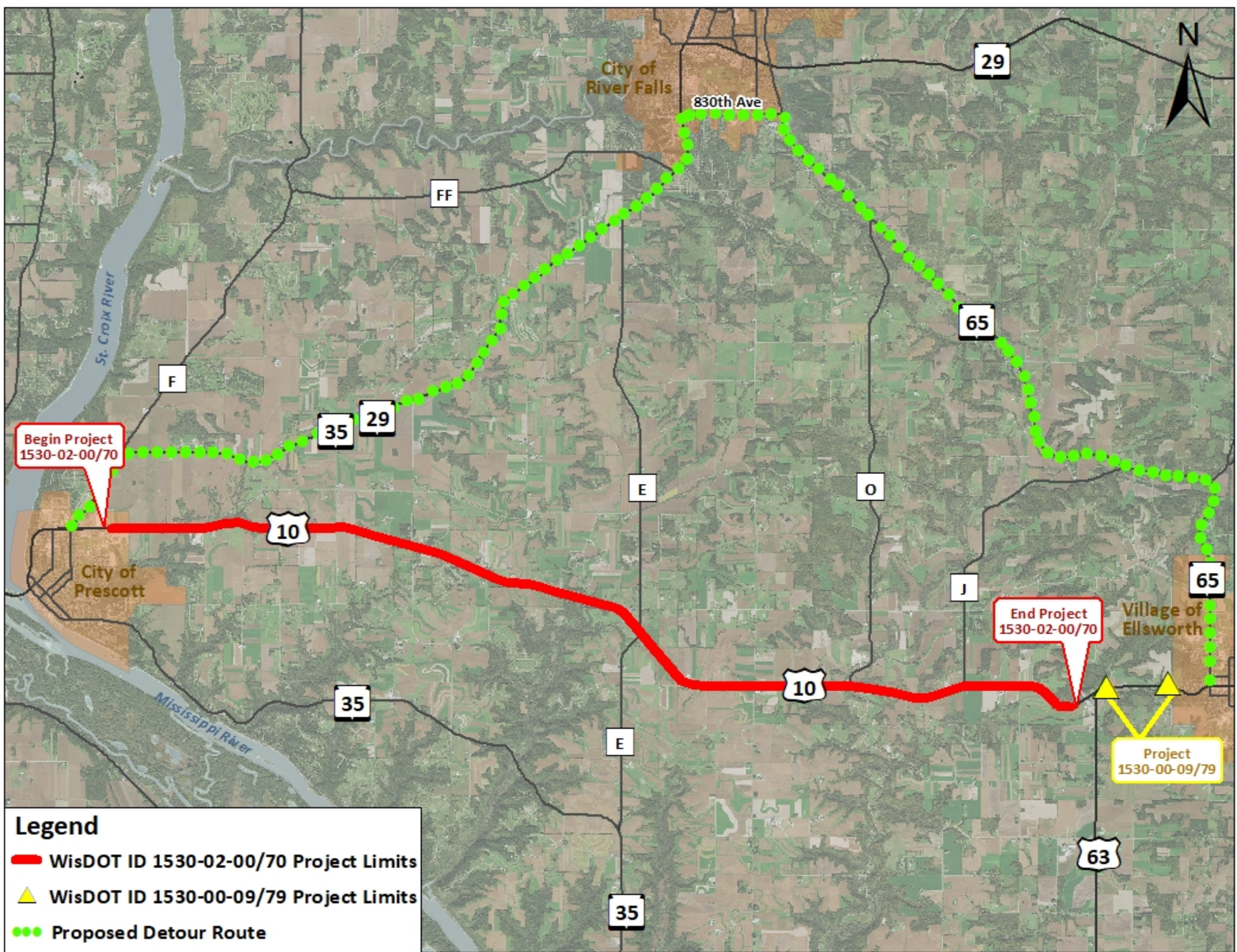


Proposed Construction Staging

- 2023 construction season (May-October)
 - US 10 closed for culvert replacements.
 - Single-lane closures through flagging operations for final paving.
- 



What will happen to US 10 traffic?





Real Estate

- Real estate acquisition and temporary easements will be needed for the US 10-Spring Creek culvert replacements.
- Real estate acquisition process
- Contact: Julie Martin, (715) 836-2875 or julie.martin@dot.wi.gov





Project Schedule

- Preliminary Plans September 2019
- Environmental Document April 2020
- Real Estate Plat September 2020
- Public Involvement Virtual Presentation September 2020
- Final Plans August 2021
- Construction Summer 2023*

*Construction could be advanced to 2022 if funding becomes available





What we need from you?

Share your concerns or comments

- <https://wisconsindot.gov/Pages/projects/by-region/nw/us10pierce/default.aspx>

Responses returned by **Oct. 2, 2020**

- By email: paula.groom@dot.wi.gov
- By mail: Paula Groom

Wisconsin Department of Transportation
718 W. Clairemont Ave.
Eau Claire, WI 54701

Thank you for your time





Project Team

- James Koenig
 - WisDOT Project Supervisor
 - james.koenig@dot.wi.gov
 - (715) 838-8391
- Paula Groom
 - WisDOT Project Manager
 - paula.groom@dot.wi.gov
 - (715) 579-6776
- Brad Halvensleben
 - Consultant Project Manager (KL Engineering, Inc.)
 - bhalvensleben@klengineering.com
 - (608) 663-1218, ext. 826

