



# US 53 (East 2nd Street) and E Street Intersection Safety Improvement Projects Public Involvement Meeting

**Stephanie King**  
Design Project Manager

Superior, Wis.

**May 9, 2022**



# Meeting Overview

## US 53 (East 2nd Street) Project and the E Street Intersection Safety Improvement Project

- Location
- Purpose
- Need
- Details and Solutions
- Traffic Impacts
- Schedule
- Business Coordination
- Communication and Contacts
- Public Comment

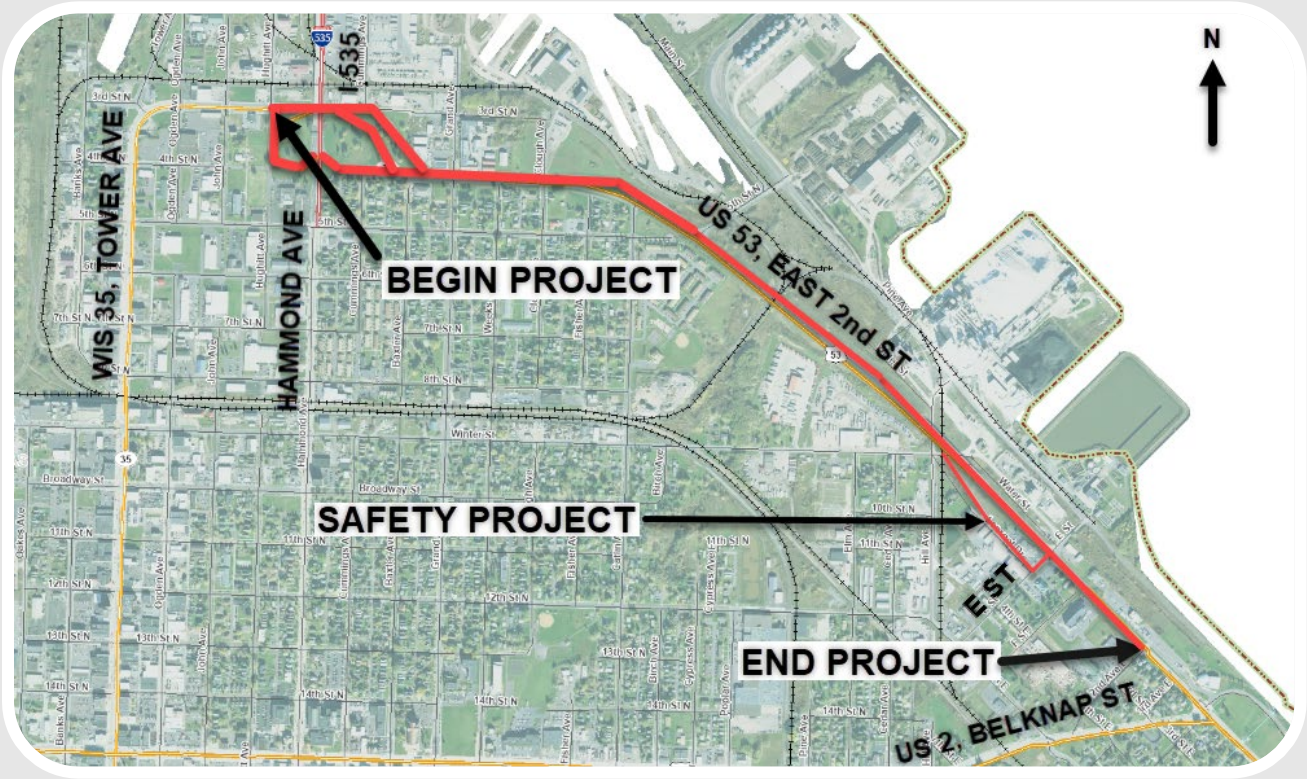




# Location

## • City of Superior: Hughitt Avenue to 2nd Avenue East

- US 53 is concurrent with East 2nd Street
- Project length is 1.6 miles



# Purpose

- Preserve and maintain the service life of the roadway surface on US 53 (East 2nd Street)
- Provide compliant pedestrian curb ramps
- Maintain the existing storm sewer system
- Provide safer US 53 (East 2nd Street) vehicle access and egress at the E Street intersection



# Need

## US 53 (East 2nd Street) Project

- Deteriorated pavement condition
- Noncompliant curb ramps
- Deteriorated condition of select storm sewer inlets and manholes



# Need

## E Street Intersection Safety Improvement Project

- Higher-than-average amount of crashes



# Details and Solutions

## US 53 (East 2nd Street) Resurfacing Project

- Remove asphalt down to concrete, clean and patch concrete joints, repair or replace concrete as necessary and overlay with new asphalt
- Make spot repairs of curb and gutter
- Upgrade and modernize select pedestrian curb ramps
- Make repairs to inlet and sanitary and storm sewer manholes



# Details and Solutions

## E Street Intersection Safety Improvement Project

- Close the existing median at E Street
- Add new right-turn bays to US 53 (East 2nd Street)

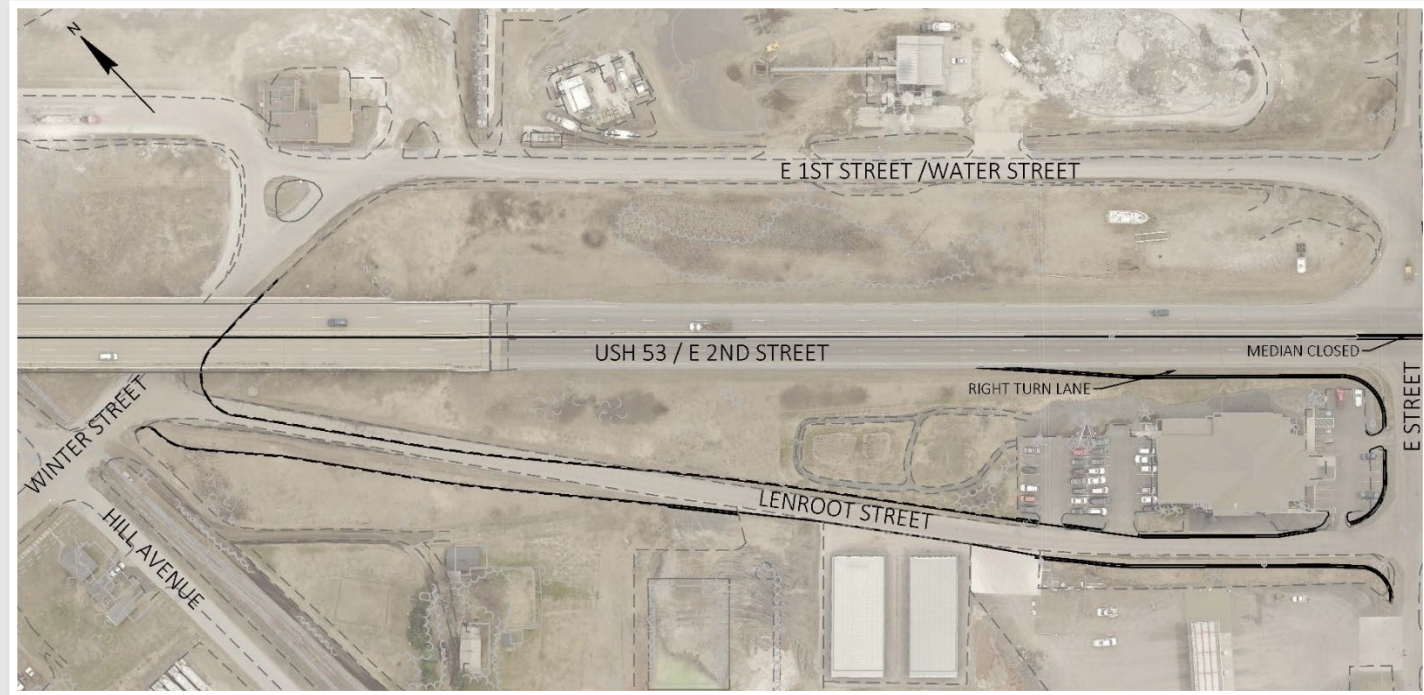




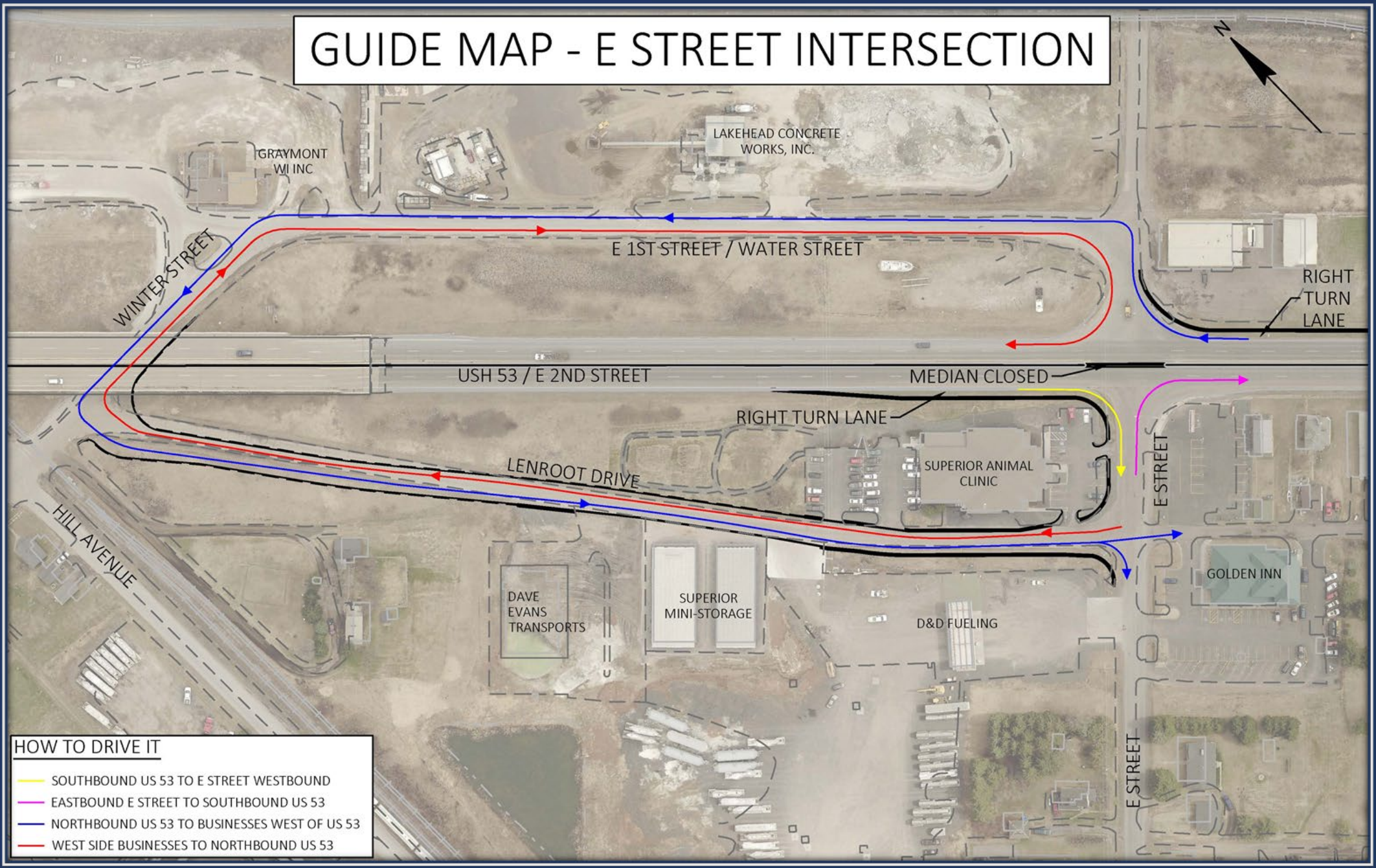
# Details and Solutions

## E Street Intersection Safety Improvement Project

- Widen Lenroot Drive to accommodate two-lane, two-way traffic
- Install new storm sewer on Lenroot Drive
- Possibly purchase new right of way



# GUIDE MAP - E STREET INTERSECTION



## HOW TO DRIVE IT

- SOUTHBOUND US 53 TO E STREET WESTBOUND
- EASTBOUND E STREET TO SOUTHBOUND US 53
- NORTHBOUND US 53 TO BUSINESSES WEST OF US 53
- WEST SIDE BUSINESSES TO NORTHBOUND US 53



# Traffic Impacts

## US 53 (East 2nd Street) Resurfacing Project

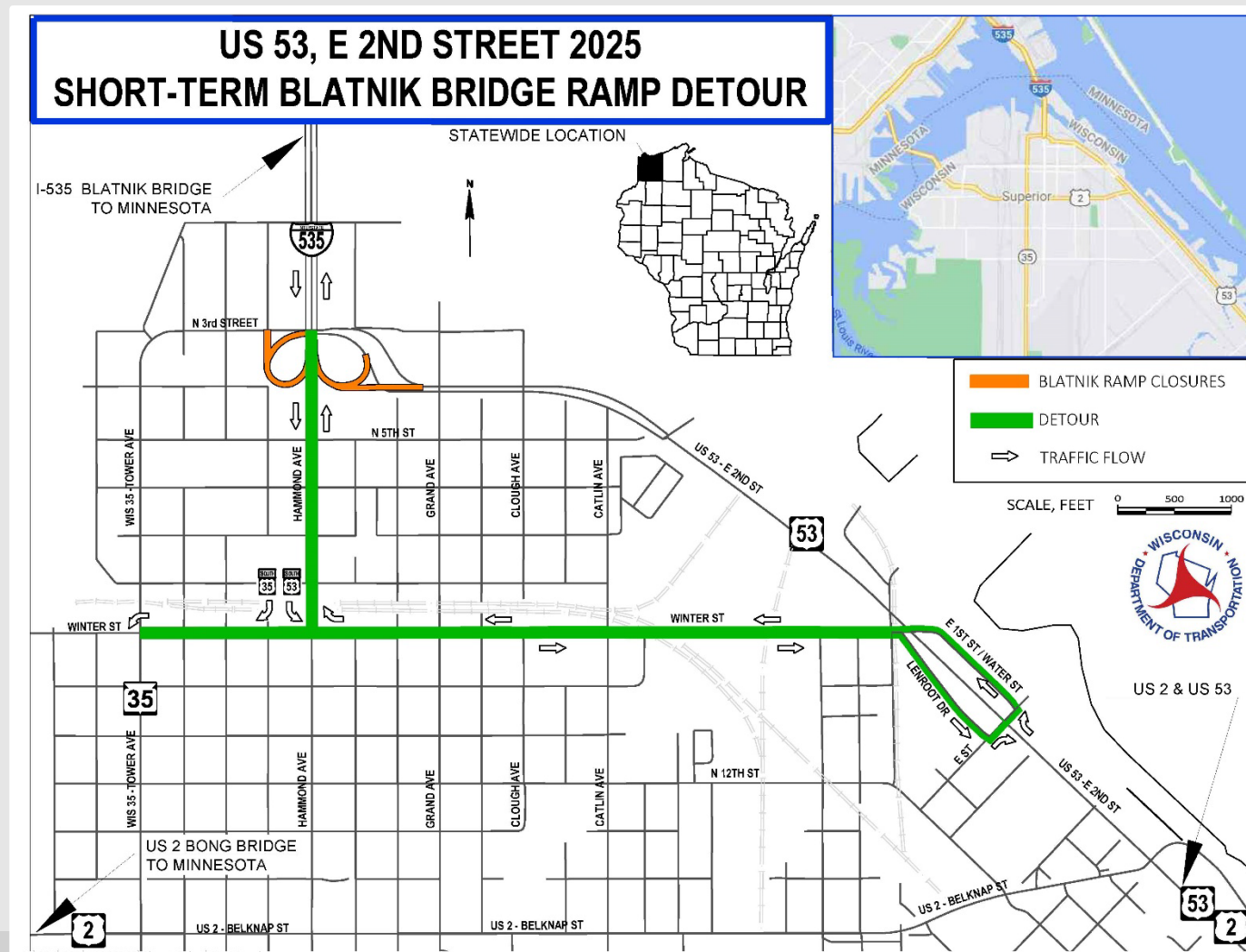
- US 53 (East 2nd Street) will remain open but could be limited to one lane in each direction
- Delays should be expected when traveling the work zone
- Blatnik Bridge on- and off-ramp repairs will result in short-term detours



# Traffic Impacts

- Short-term detours

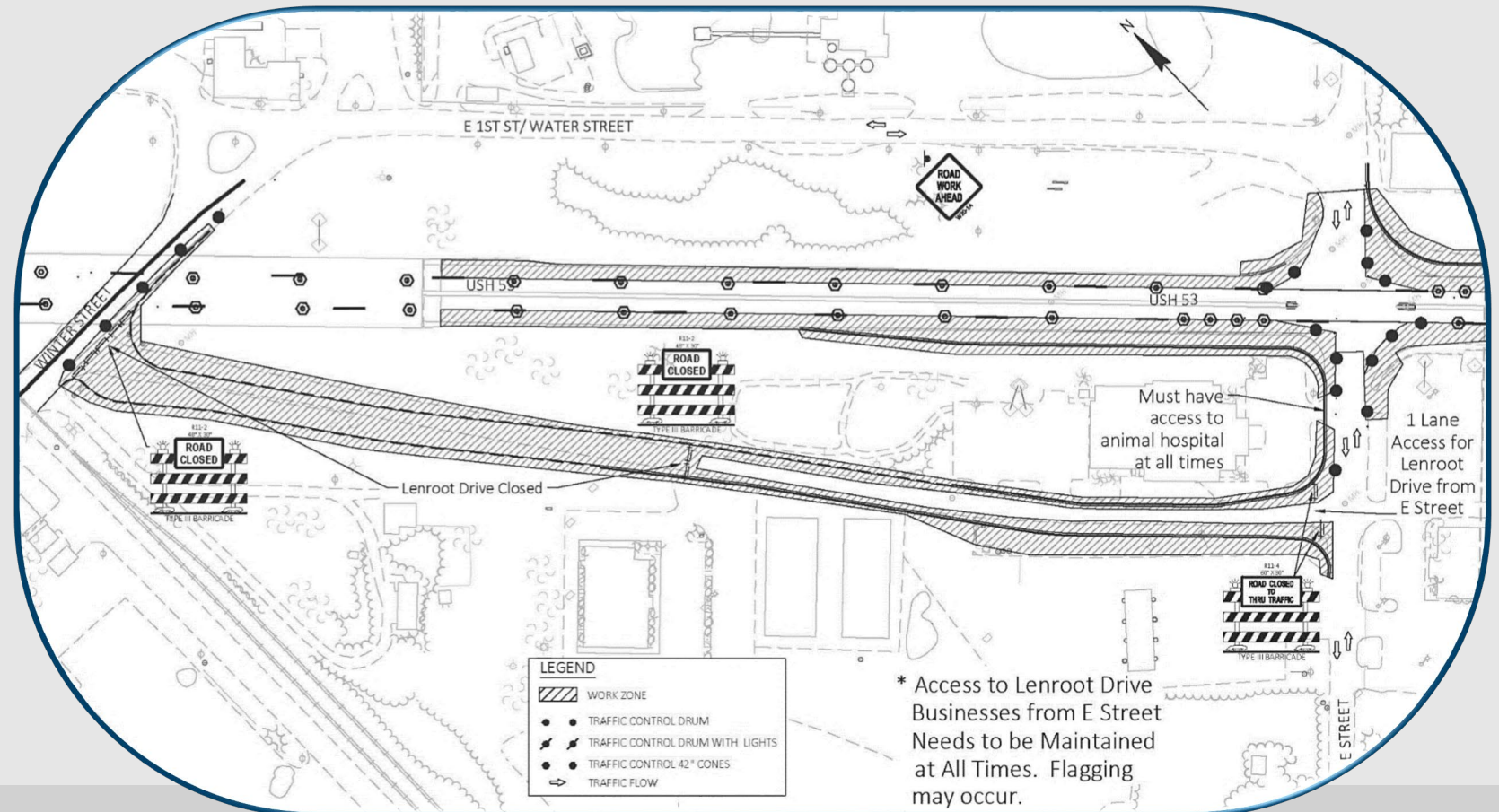
- Traffic would enter or exit US 53 (East 2<sup>nd</sup> Street) at the E Street intersection
- Traffic would utilize Winter Street and Hammond Avenue to access the Blatnik Bridge while the bridge ramps are closed for repair



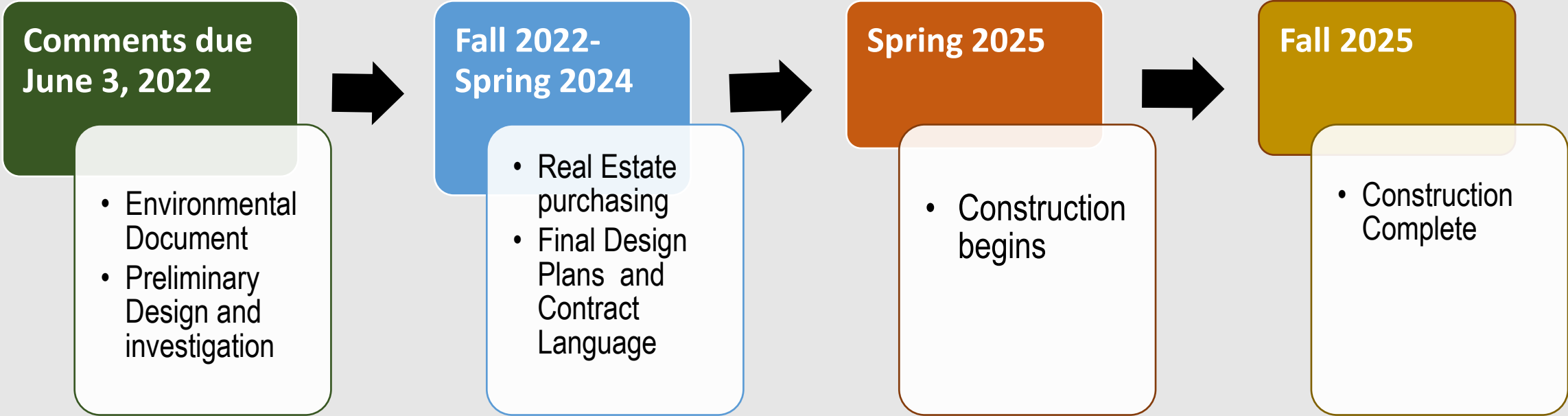
# Traffic Impacts

## E Street Intersection Safety Improvement Project

- One lane access would be available to businesses on Lenroot Drive although flagging may occur



# Schedule



# Business Coordination

- Visit [wisconsindot.gov/together](http://wisconsindot.gov/together)
  - Tips, tools and resources
- Project team is here to help
  - What information would help you...
    - Inform customers about the project?
    - Coordinate with suppliers?
    - Communicate with employees?





# Public Comment

- **Submit comments to WisDOT Project Manager Stephanie King by:**

- Phone: (715) 392-7874
- Email: Stephanie.King@dot.wi.gov
- Mail: WisDOT Northwest Region- Superior  
1701 N. 4th St.  
Superior, WI 54880-1068

**Public  
Comment  
Period Ends  
June 3, 2022**

- **Project Design Website**

- <https://wisconsindot.gov/Pages/projects/by-region/nw/us2us53/default.aspx>

