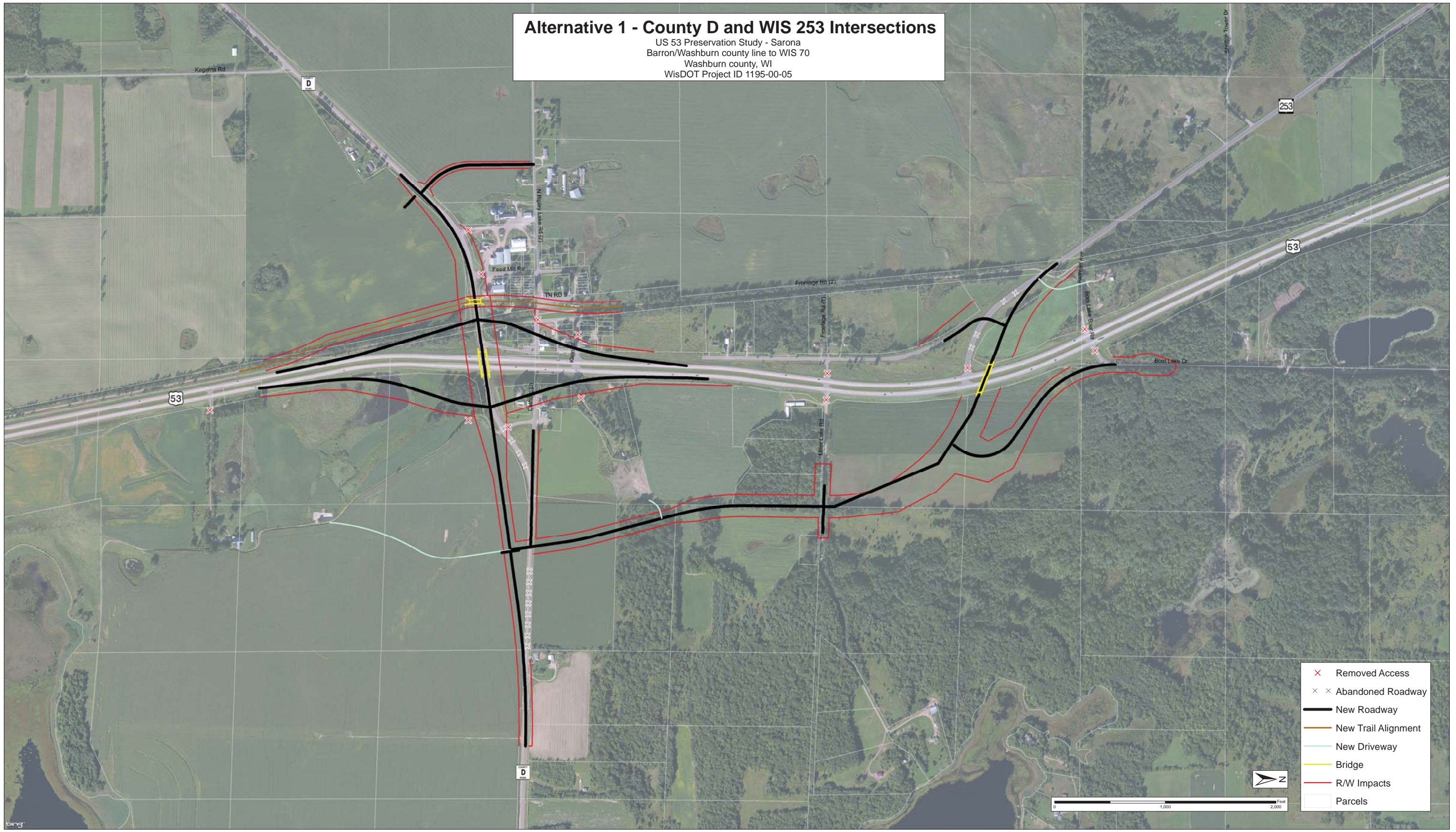
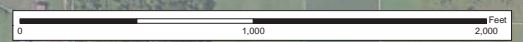


Alternative 1 - County D and WIS 253 Intersections
 US 53 Preservation Study - Sarona
 Barron/Washburn county line to WIS 70
 Washburn county, WI
 WisDOT Project ID 1195-00-05

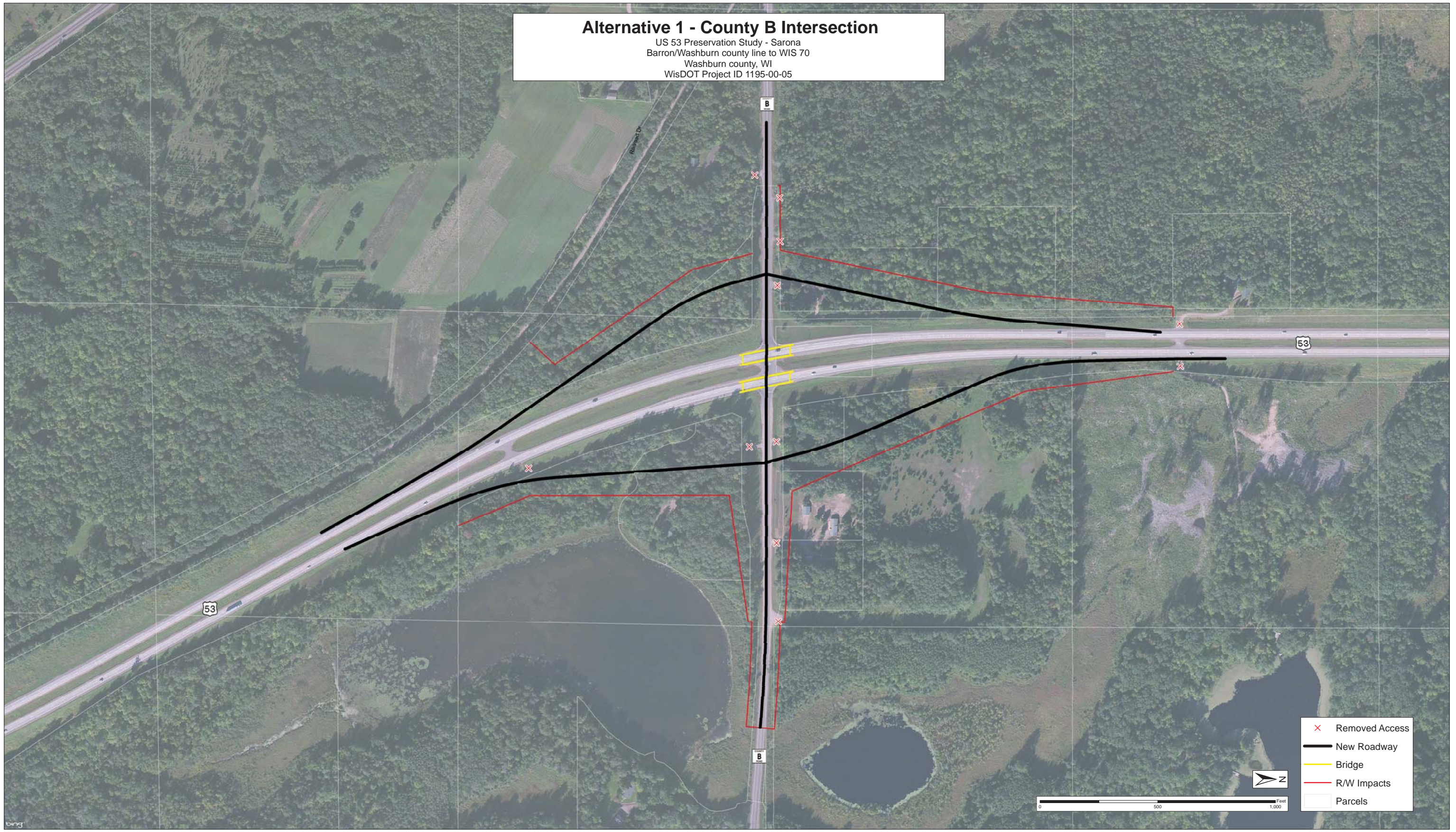


- ✗ Removed Access
- ✗ Abandoned Roadway
- New Roadway
- New Trail Alignment
- New Driveway
- Bridge
- R/W Impacts
- ▭ Parcels



Alternative 1 - County B Intersection

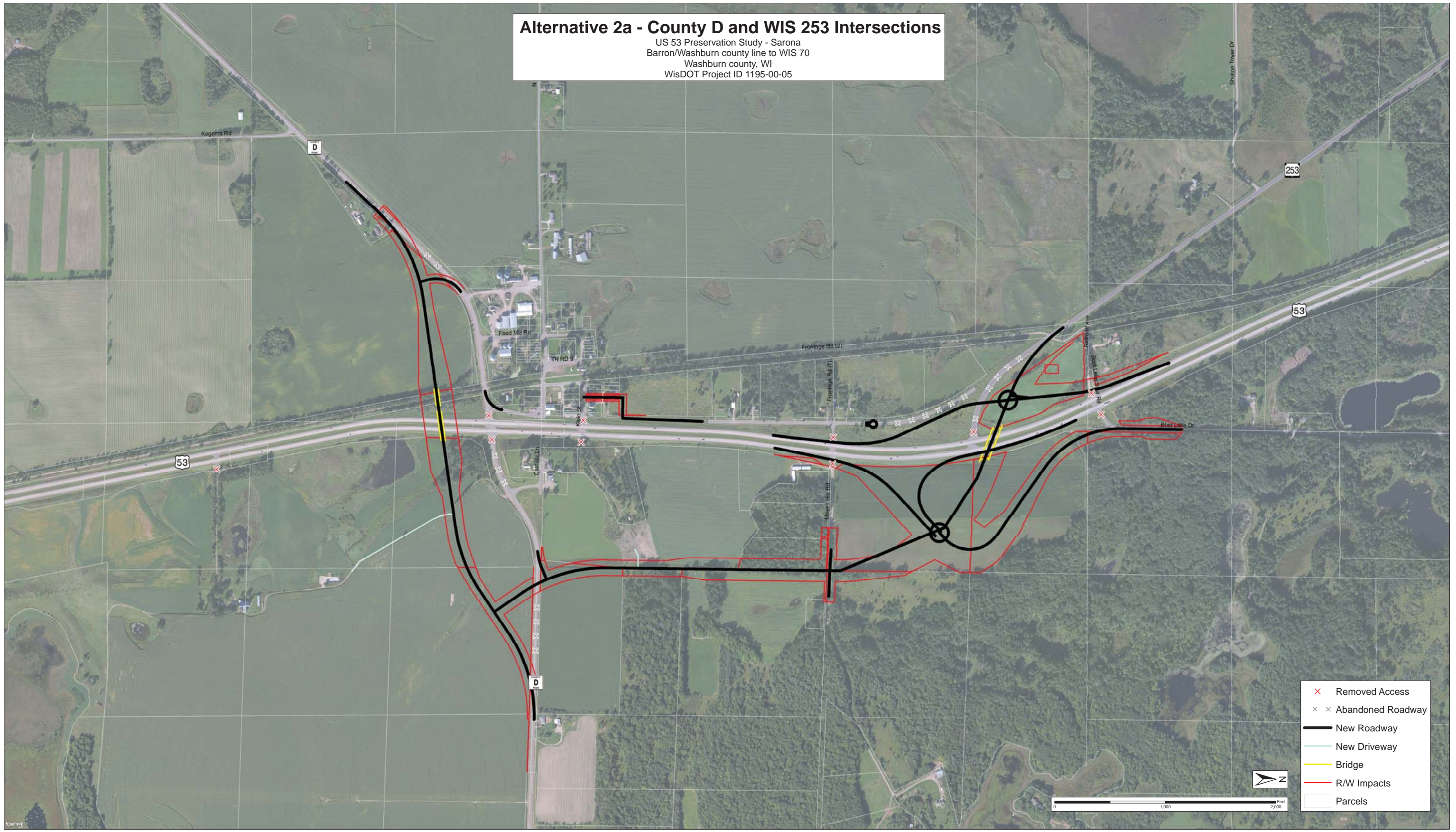
US 53 Preservation Study - Sarona
Barron/Washburn county line to WIS 70
Washburn county, WI
WisDOT Project ID 1195-00-05



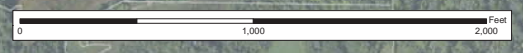
- ✕ Removed Access
- New Roadway
- Bridge
- R/W Impacts
- ▭ Parcels

Alternative 2a - County D and WIS 253 Intersections

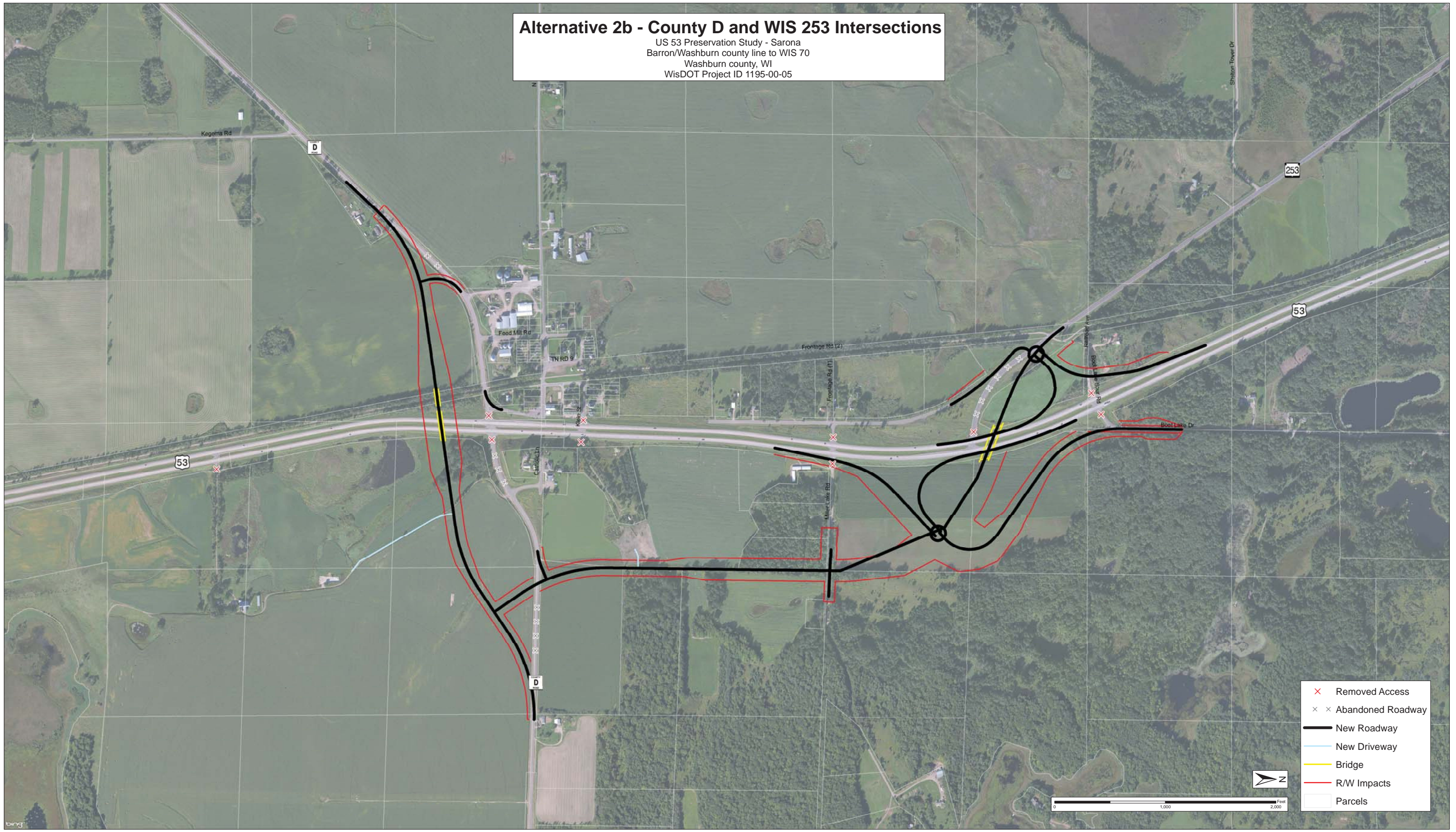
US 53 Preservation Study - Sarona
Barron/Washburn county line to WIS 70
Washburn county, WI
WisDOT Project ID 1195-00-05



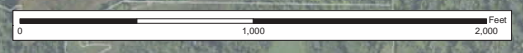
- × Removed Access
- × × Abandoned Roadway
- New Roadway
- New Driveway
- Bridge
- R/W Impacts
- Parcels



Alternative 2b - County D and WIS 253 Intersections
 US 53 Preservation Study - Sarona
 Barron/Washburn county line to WIS 70
 Washburn county, WI
 WisDOT Project ID 1195-00-05

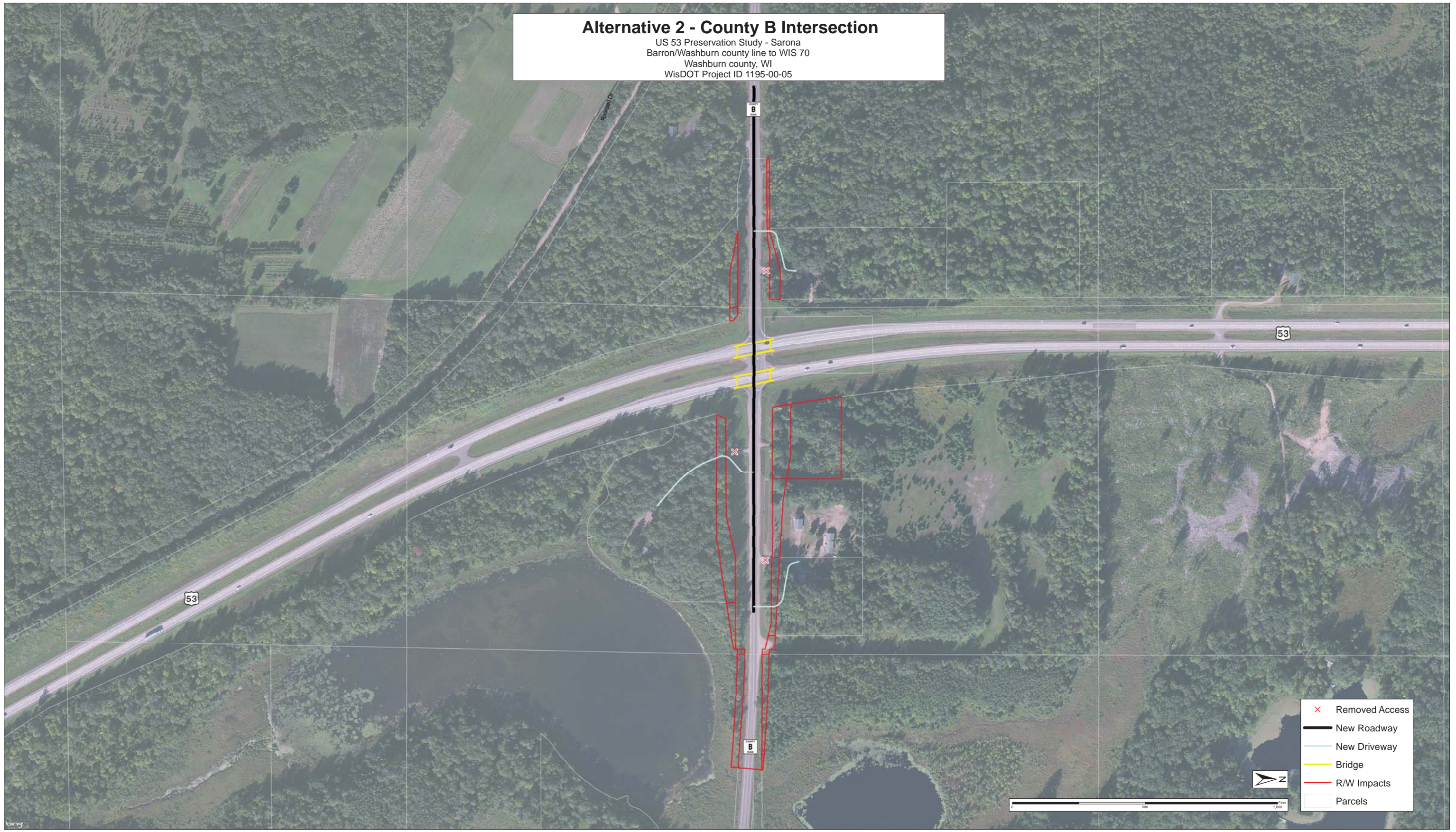


- ✗ Removed Access
- ✗✗ Abandoned Roadway
- New Roadway
- New Driveway
- Bridge
- R/W Impacts
- ▭ Parcels



Alternative 2 - County B Intersection

US 53 Preservation Study - Sarona
Barron/Washburn county line to WIS 70
Washburn county, WI
WisDOT Project ID 1195-00-05

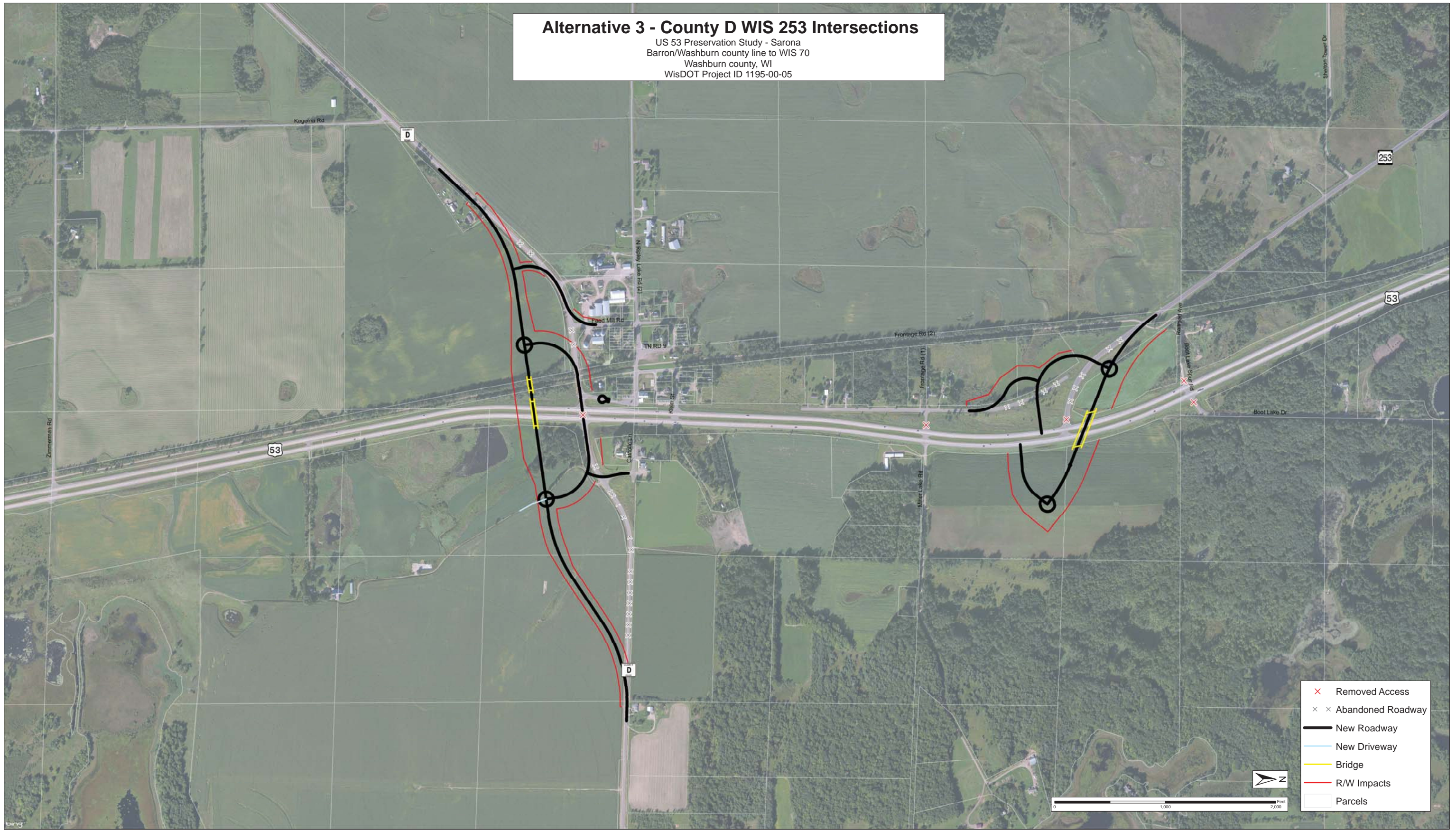


- ✕ Removed Access
- New Roadway
- New Driveway
- Bridge
- R/W Impacts
- Parcels

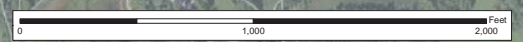


Alternative 3 - County D WIS 253 Intersections

US 53 Preservation Study - Sarona
Barron/Washburn county line to WIS 70
Washburn county, WI
WisDOT Project ID 1195-00-05



- ✗ Removed Access
- ✗ Abandoned Roadway
- New Roadway
- New Driveway
- Bridge
- R/W Impacts
- ▭ Parcels



Alternative 3 - County B Intersection
US 53 Preservation Study - Sarona
Barron/Washburn county line to WIS 70
Washburn county, WI
WisDOT Project ID 1195-00-05



- ✕ Removed Access
- New Roadway
- New Driveway
- Bridge
- R/W Impacts
- ▭ Parcels