



Branch Rush River Bridge Spruce Street Intersection

US 63

Village of Baldwin
St. Croix County

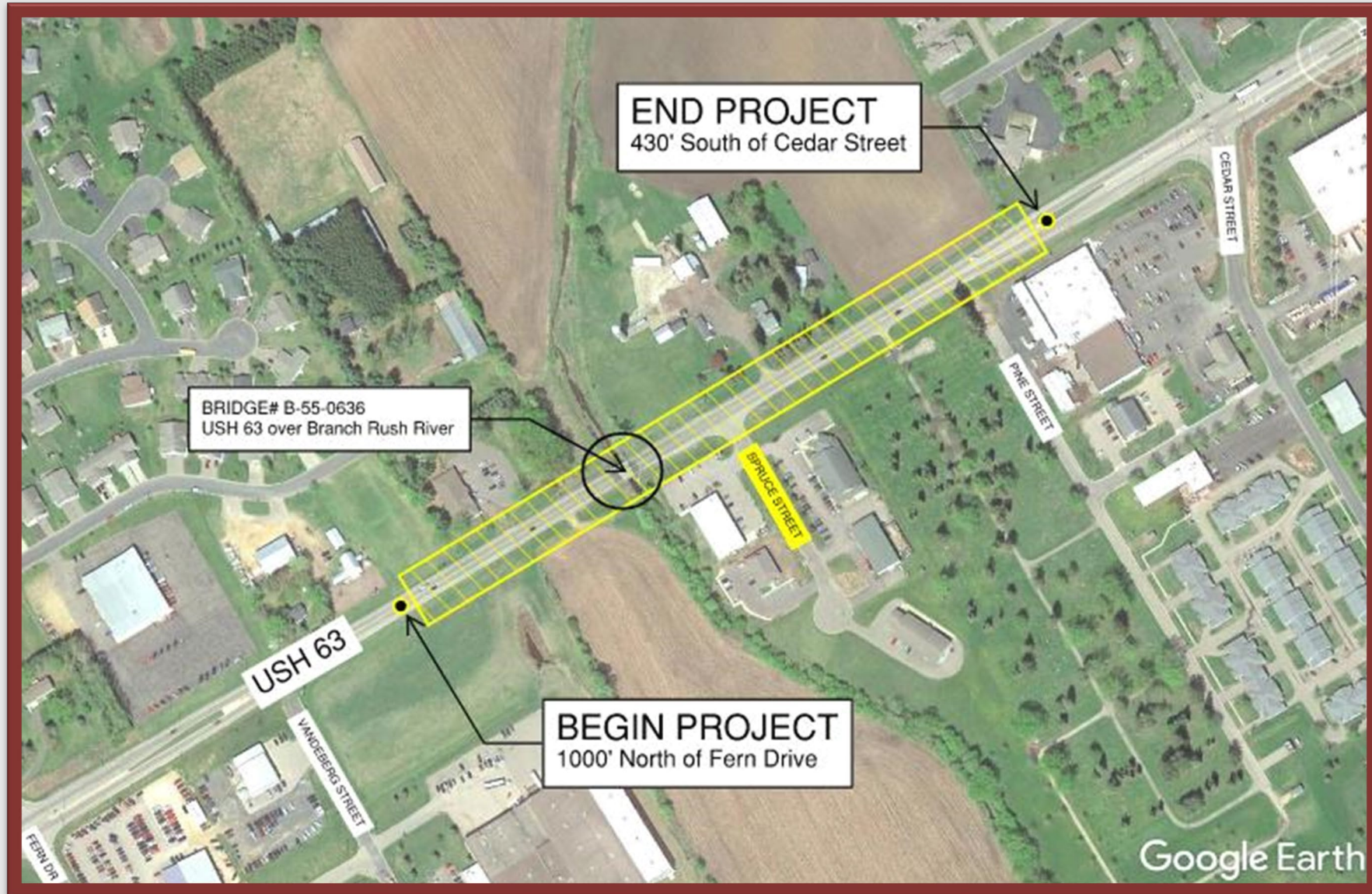
April 2022

Presentation Agenda

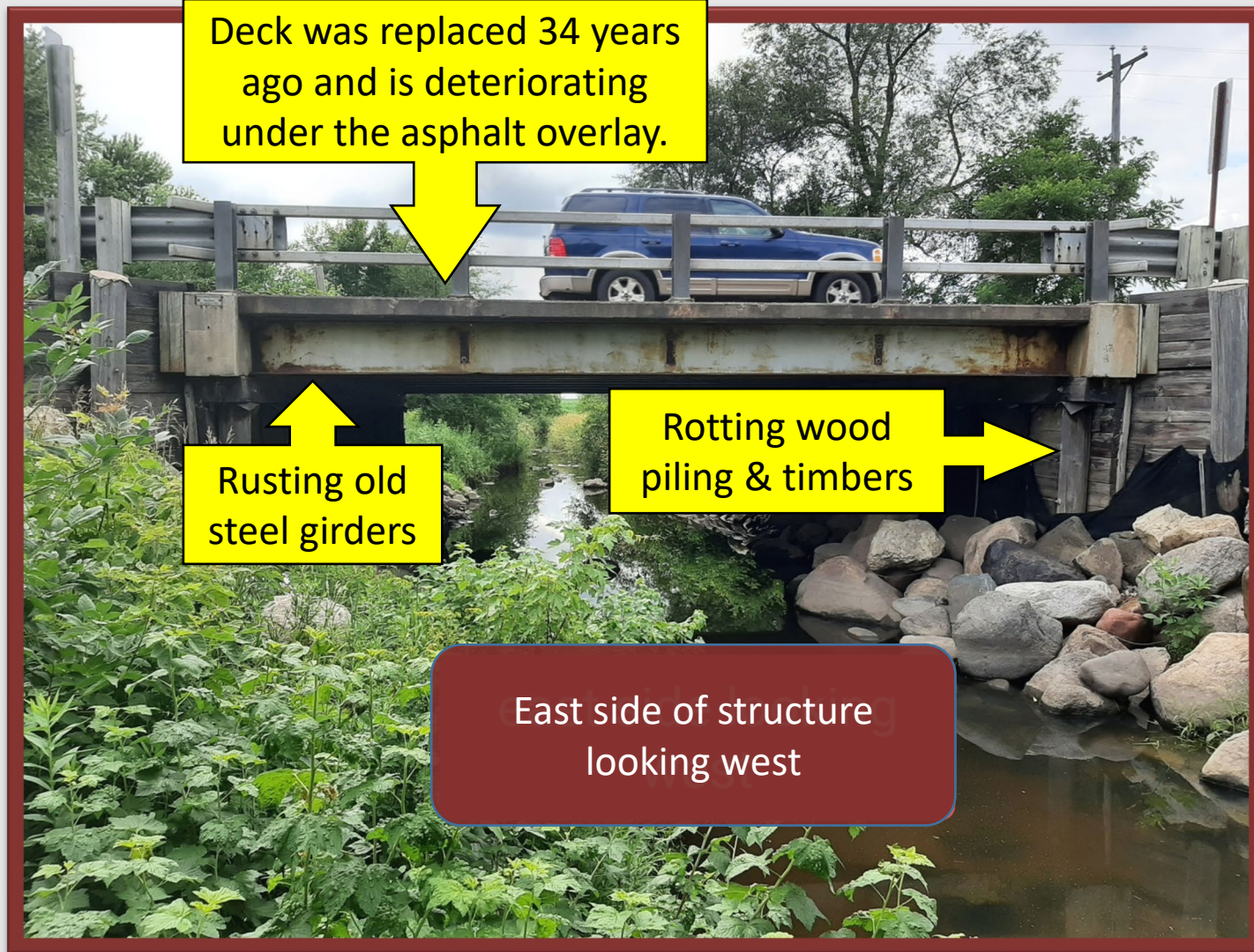
- Project Limits
- Project Purpose
- Alternatives
- Project Impacts
- Schedule
- Contact Information



Project Limits



Project Purpose



Bridge Deficiencies

- Built in 1939
 - Poor deck condition
 - Replaced in 1988
 - Old, rusting girders
 - Rotting timber supports and wing walls

Project Purpose

Intersection Deficiencies

- No southbound left-turn lane
 - Blocks southbound through traffic
 - Results in rear-end crashes





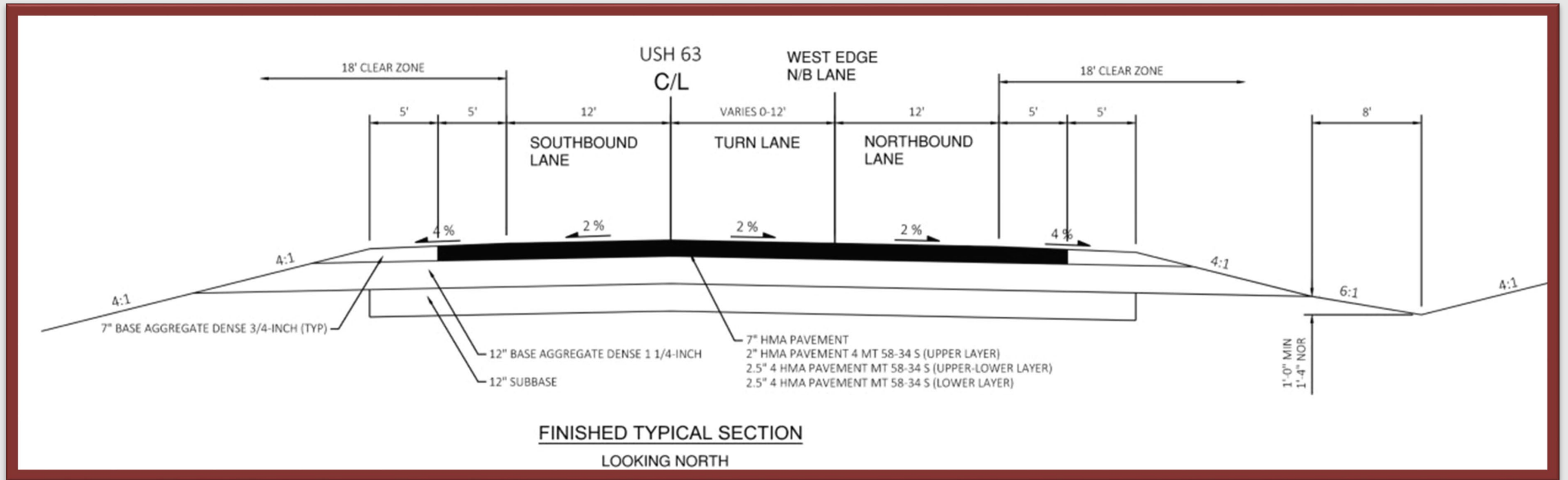
Alternatives

- No build
- Replace the bridge and widen US 63 and add a center turn lane



Alternatives

Bridge Replacement with Turn Lane

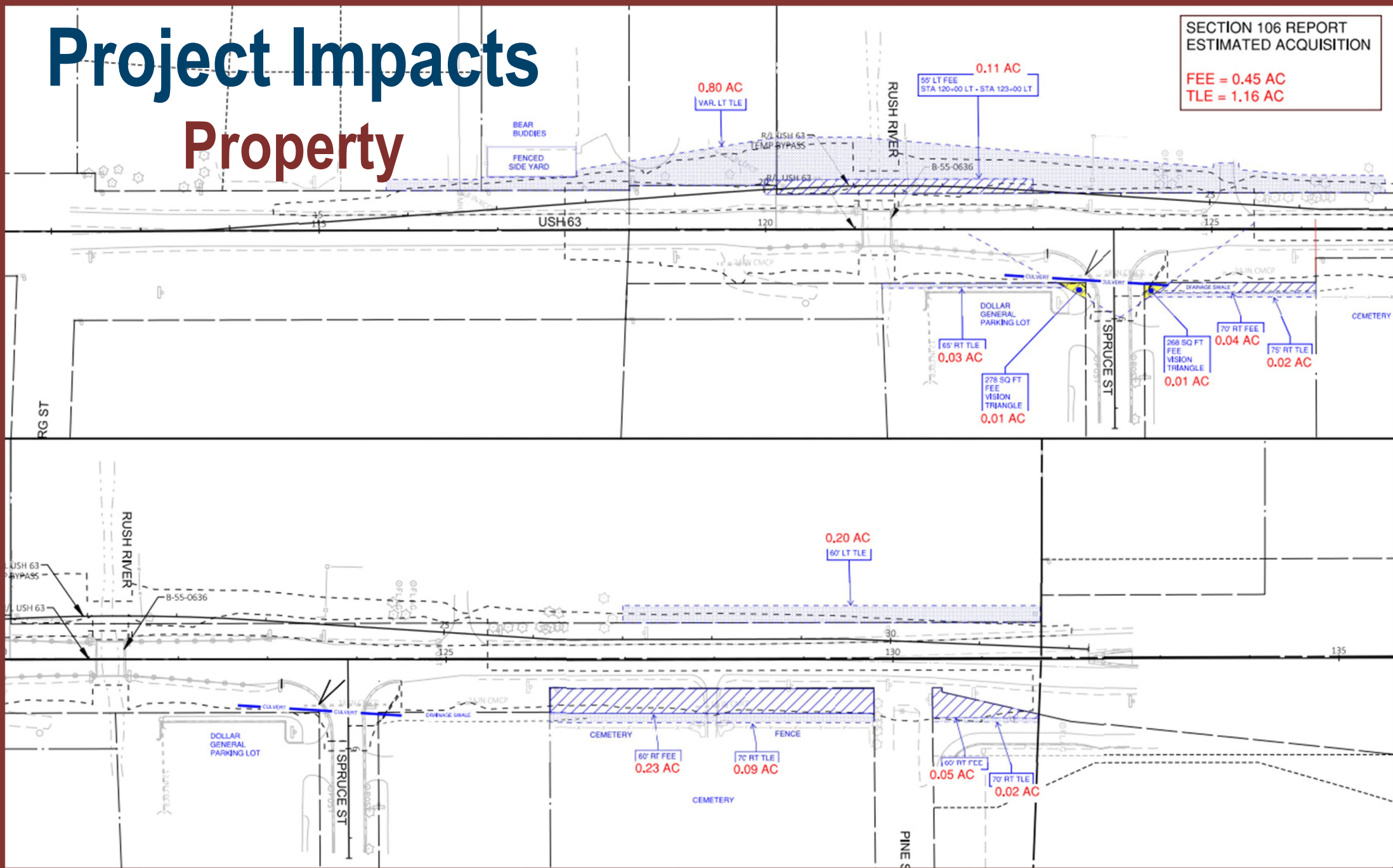


Project Impacts

Property

SECTION 106 REPORT
ESTIMATED ACQUISITION

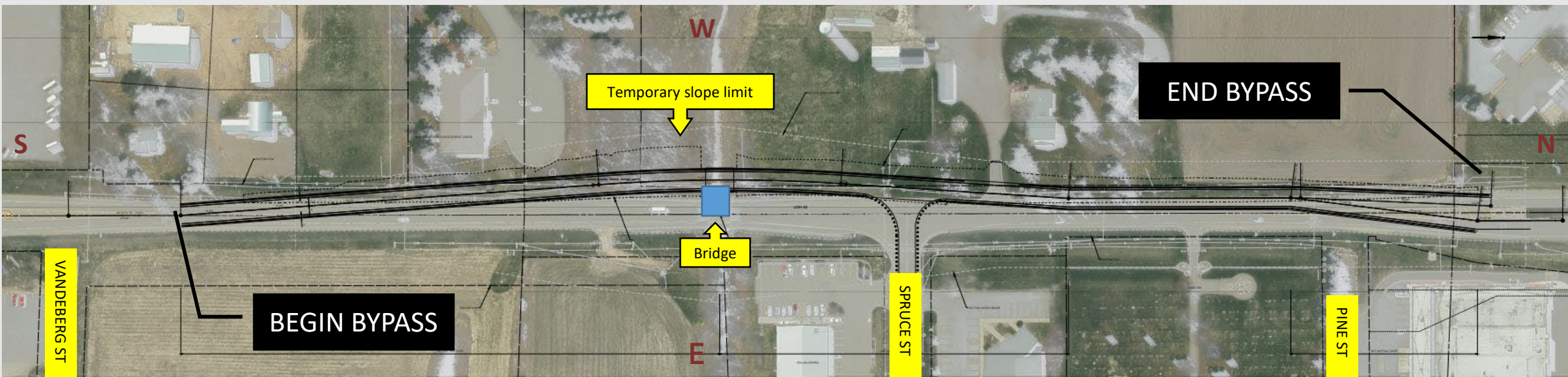
FEE = 0.45 AC
TLE = 1.16 AC



Project Impacts

Traffic

- US 63 open during construction
 - Temporary bypass road on the west side of US 63
 - Temporary connection to Spruce Street
 - Access maintained to all properties



Schedule

- April 2022: Preliminary plans drafted.
- July 2023: Final design and real estate acquisition begins.
- May 2024: Final plans completed.
- September 2024: Bids solicited.
- 2025: Construction.





Contact Information

- Ross Johnson, P.E., Consultant Design Manager
 - (715) 579-4175
 - rjohnson@cbssquaredinc.com
- Cameron Shiffer, P.E., WisDOT Consultant Project Manager
 - (715) 495-2196
 - cshiffer@correinc.com
- Christena T. O'Brien, WisDOT Communications Manager
 - (715) 828-9471
 - christena.obrien@dot.wi.gov