

This presentation is for the project on US 8 between River Avenue in the city of Ladysmith to Prentice Street in the village of Glen Flora. The project is also located in the village of Tony and towns of Flambeau, Dewey and True in Rusk County.

Rather than holding an in-person meeting, public involvement efforts have moved online as a precaution against COVID-19 based on the most current health information from state, federal and local health departments.

All meeting materials, including the handout with a comment form, are posted on the design website for this project.

<https://wisconsindot.gov/Pages/projects/by-region/nw/US8rusk/default.aspx>

If you have any questions, please contact WisDOT Consultant Project Manager Jeff Saxby at (920) 380-2805.



Public Involvement

US 8

River Avenue to Prentice Street

Nov. 16 to Dec. 18, 2020



Project team

- WisDOT Northwest Region
 - Jeff Saxby, P.E. – Consultant Project Manager
 - Jeff Olson, P.E. – Project Supervisor
- EMCS, Inc.
 - Stephanie Christensen, P.E. – Consultant Designer



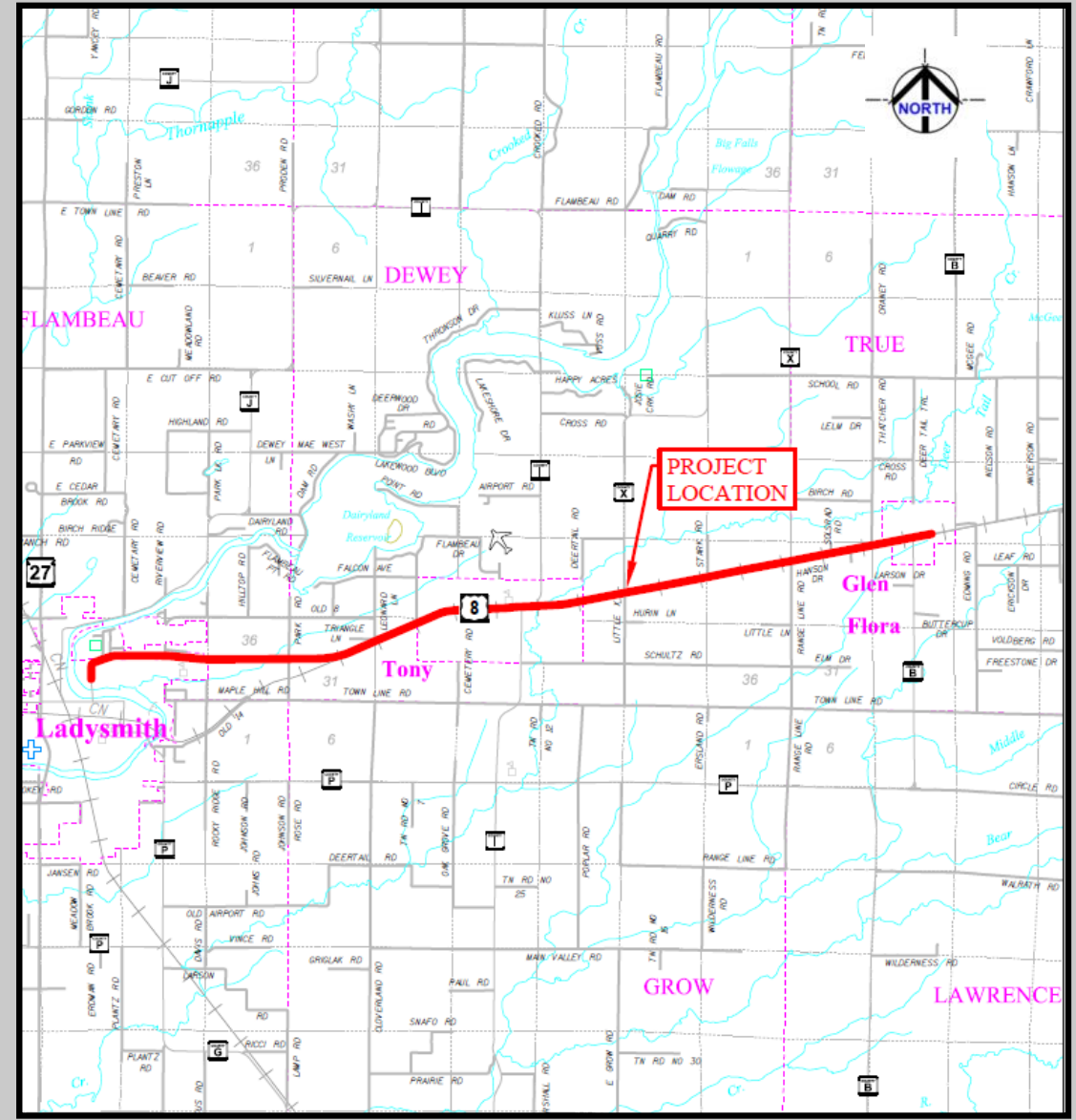
Objectives

- Project location
- Project purpose and need
- Proposed improvements
- Construction staging and schedule
- Real estate
- Current project schedule
- Discussion



Project location

- 11 miles
- River Avenue in the city of Ladysmith to Prentice Street in the village of Glen Flora



Purpose and need

- US 8 importance
 - Regional backbone across Wisconsin
 - Truck route including movement of oversized-overweight loads
 - Serves local commuters and businesses
- WisDOT's objective is to ensure the safe and efficient operations of the state's highway system while supporting local access



Purpose and need

- Pavement deterioration
 - Cracking and rutting of existing pavement
 - The pavement requires maintenance to extend its service life
- Curb ramps and sidewalk
 - The curb ramps in the city of Ladysmith and village of Tony do not meet ADA (Americans With Disabilities Act) standards
 - Discontinuous sidewalk in the village of Tony
- Other needs
 - Existing curbs and gutters are deteriorated at spot locations
 - Guardrails are deteriorated



Purpose and need

- Safety conditions (2013 to 2017)
 - 49 total crashes occurred within the project limits
 - 11 crashes resulted in more severe injuries
 - 17 crashes where vehicles ran off the road with 6 crashes resulting in severe injuries
 - A review of railroad crossing safety measures is warranted at County B
 - There are no existing railroad signals or gates at the County B railroad crossing



US 8 proposed improvements

- Pavement improvements are recommended to keep traffic moving safely and efficiently
- Pavement maintenance best addresses the project needs
 - Balances level of investment in the roadway system with the added pavement life achieved
- Asphalt mill and overlay approximately 11 miles of US 8
- Improvements in the city of Ladysmith and village of Tony
 - Reconstruction of curb ramps to meet ADA standards, where feasible
 - Replacement of deteriorated curb and gutter



US 8 proposed improvements

- Replacement of guardrails
- New pavement marking will be installed
- Centerline rumble strips will be placed in rural areas to maintain safe operating conditions along US 8
- Shoulder paving with shoulder rumble strips will be completed in rural areas to minimize run off the road crashes
- The project will evaluate installation of railroad signals and gates at the County B railroad crossing



Other projects

- Construction will be coordinated with the adjacent pavement rehabilitation project ID 1580-04-73 on US 8 between Prentice Street and the Rusk/Price County line
- A culvert improvement project is planned for 2023 along US 8 between Ladysmith and the east county line
- Separate coordination is ongoing for these projects



Current construction schedule

- Construction is planned for 2024
- Maintaining safety and mobility are high priorities
 - Single-lane closures with flagging conditions
 - Shoulder and parking lane closures during paving work
 - Staging during curb ramp work to allow pedestrian access
 - Local and emergency access to be maintained



Real estate needs

- Minor permanent fee and temporary limited easements are needed
 - Curb ramp improvements
 - County B railroad crossing
- Acquisition process
 - WisDOT will acquire real estate
 - Individual property owner meetings will be held
 - Real estate acquisitions will begin in summer 2021
- Landowner rights brochure on the project website



Current project schedule

- Local official's meeting - June 2020
- Concept plans - September 2020
- Public involvement - November/December 2020
- Preliminary plans - Spring 2021
- Environmental document - Spring 2021
- Final right of way plat - Summer 2021
- Real estate negotiations - Summer 2021 to spring 2023
- Final plans - May 2023
- Construction - 2024



Project design website

<https://wisconsindot.gov/Pages/projects/by-region/nw/US8rusk/default.aspx>

The screenshot shows the Wisconsin Department of Transportation website. At the top left is the state logo and the text "State of Wisconsin Department of Transportation". A navigation bar contains links for "DMV ONLINE SERVICES", "DMV INFO", "DOING BUSINESS", "TRAVEL", "PROJECTS AND STUDIES", and "ABOUT WISDOT". An orange arrow labeled "STEP 1" points to the "PROJECTS AND STUDIES" menu, which is open to show a dropdown list of options: "Highway projects and studies", "Projects and studies by mode", "Data and planning resources", "Environmental information", "In This Together", "Life of a highway project", "Six Year Highway Program", "Statewide plans", and "Solvency". Below the navigation is a search bar and a main heading "Northwest Region Highway Projects and Studies". Underneath is a "COVID-19 Update" section with a "Construction" sub-heading. The text states: "WisDOT continues to monitor the public health crisis as it applies to essential highway maintenance and construction projects. Workers who support the construction of critical or strategic infrastructure are considered essential by the U.S. Department of Homeland Security." It includes two bullet points: "Wisconsin's Safer at Home Order (Executive Order 12, issued March 24, 2020) allows travel for workers engaged in the operation and upkeep of infrastructure. No special documentation or permits are required." and "Workers are expected to continue to take precautions against the spread of COVID-19 at the office and job site. Monitor the Wisconsin Department of Health for latest information and guidance." Below this is the text "With our partners in industry, we will strive to keep this construction season on schedule." To the right of the text is a map of the Northwest region of Wisconsin, with counties labeled: Douglas, Bayfield, Washburn, Sawyer, Ashland, Burnett, Polk, Barron, Rusk, Taylor, St. Croix, Dunn, Chippewa, Clark, Pierce, Pepin, Eau Claire, Buffalo, Jackson, and Trempealeau. An orange arrow labeled "STEP 2" points to a highlighted box containing the text "Projects in Design (Construction scheduled)".



