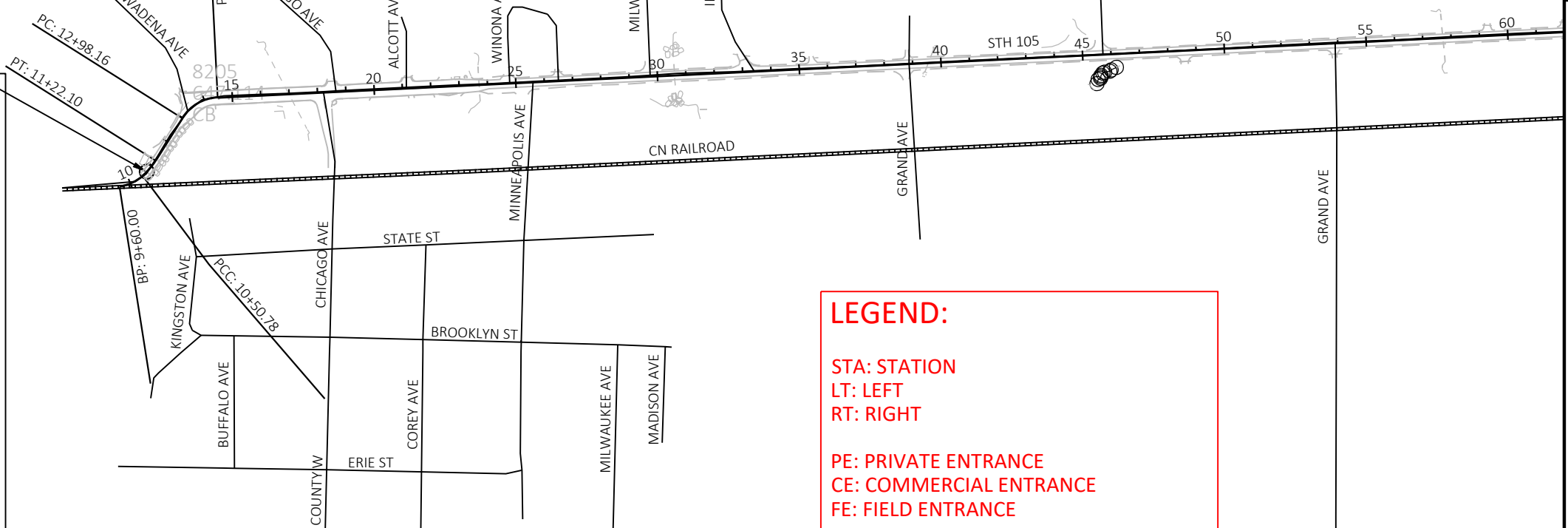


**CONVENTIONAL SYMBOLS**

PLAN		PROFILE	
CORPORATE LIMITS		GRADE LINE	
PROPERTY LINE		ORIGINAL GROUND	
LOT LINE		MARSH OR ROCK PROFILE (To be noted as such)	
LIMITED HIGHWAY EASEMENT		SPECIAL DITCH	
EXISTING RIGHT OF WAY		GRADE ELEVATION	
PROPOSED OR NEW R/W LINE		CULVERT (Profile View)	
SLOPE INTERCEPT		UTILITIES	
REFERENCE LINE		ELECTRIC	
EXISTING CULVERT		FIBER OPTIC	
PROPOSED CULVERT (Box or Pipe)		GAS	
COMBUSTIBLE FLUIDS		SANITARY SEWER	
MARSH AREA		STORM SEWER	
WOODED OR SHRUB AREA		TELEPHONE	
		WATER	
		UTILITY PEDESTAL	
		POWER POLE	
		TELEPHONE POLE	

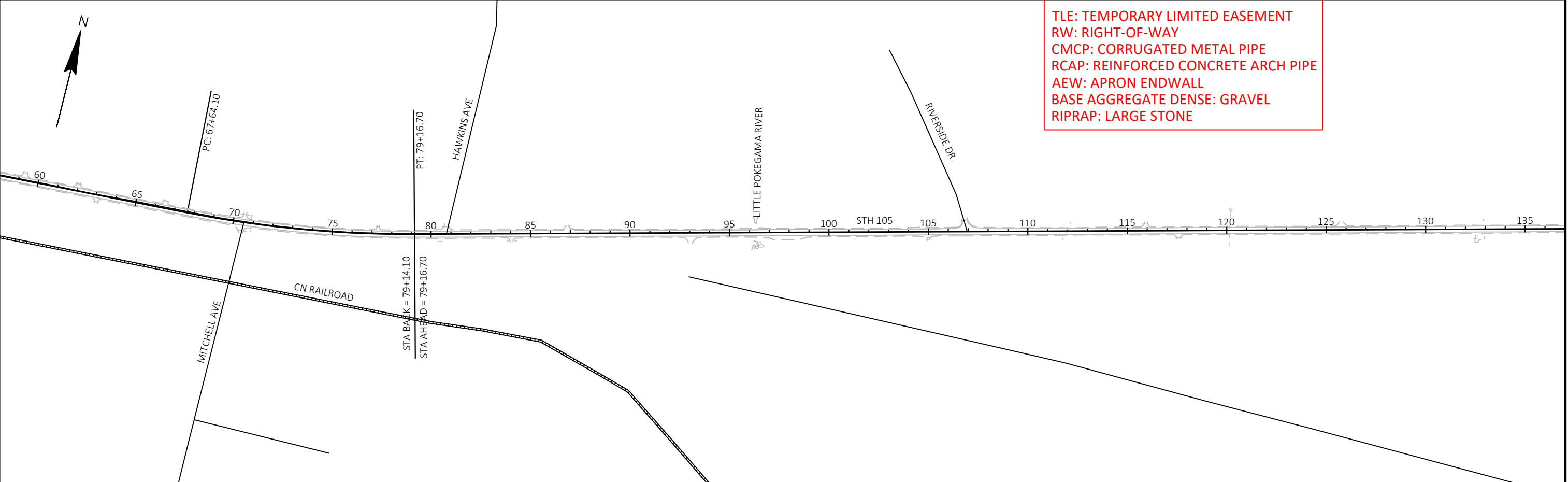


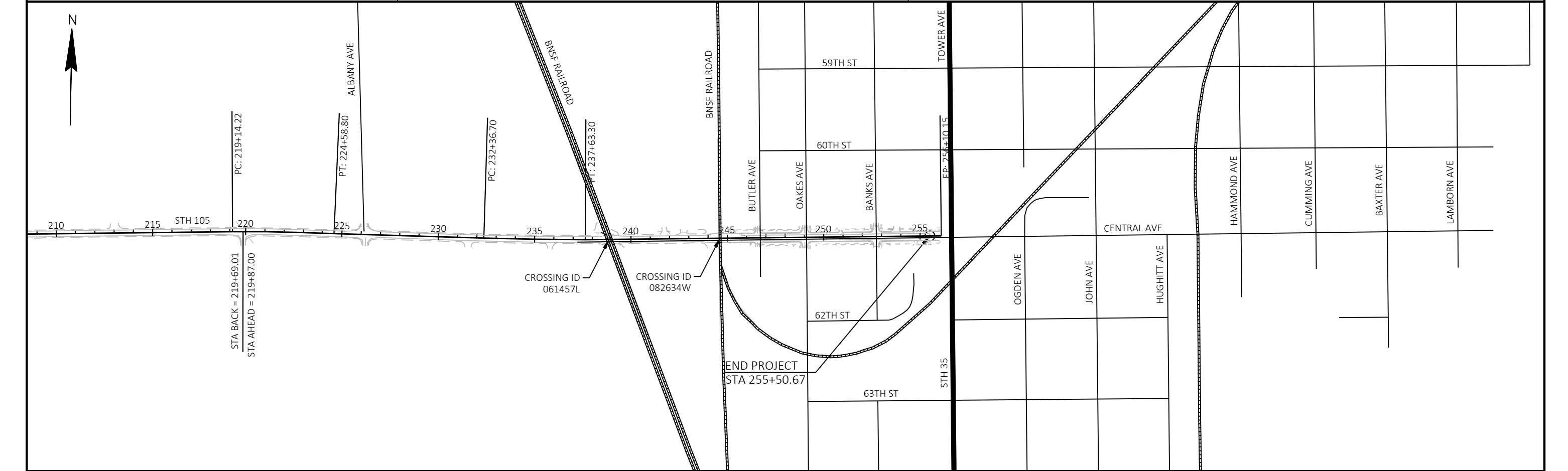
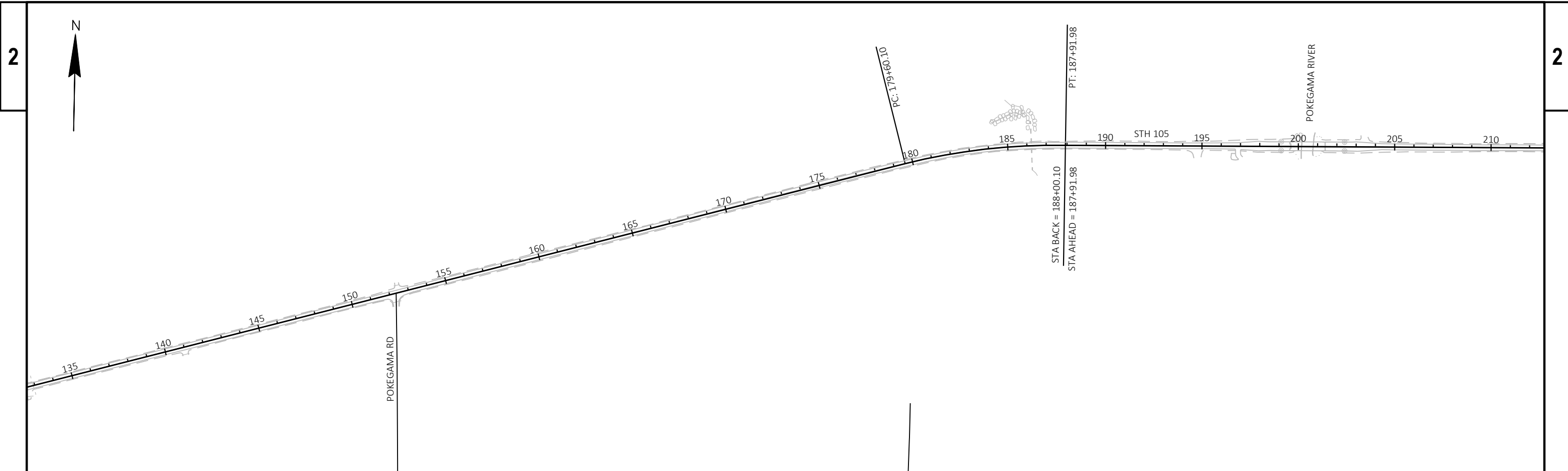
**LEGEND:**

STA: STATION  
 LT: LEFT  
 RT: RIGHT

PE: PRIVATE ENTRANCE  
 CE: COMMERCIAL ENTRANCE  
 FE: FIELD ENTRANCE

TLE: TEMPORARY LIMITED EASEMENT  
 RW: RIGHT-OF-WAY  
 CMCP: CORRUGATED METAL PIPE  
 RCAP: REINFORCED CONCRETE ARCH PIPE  
 AEW: APRON ENDWALL  
 BASE AGGREGATE DENSE: GRAVEL  
 RIPRAP: LARGE STONE





PROJECT NO: 8760-00-01

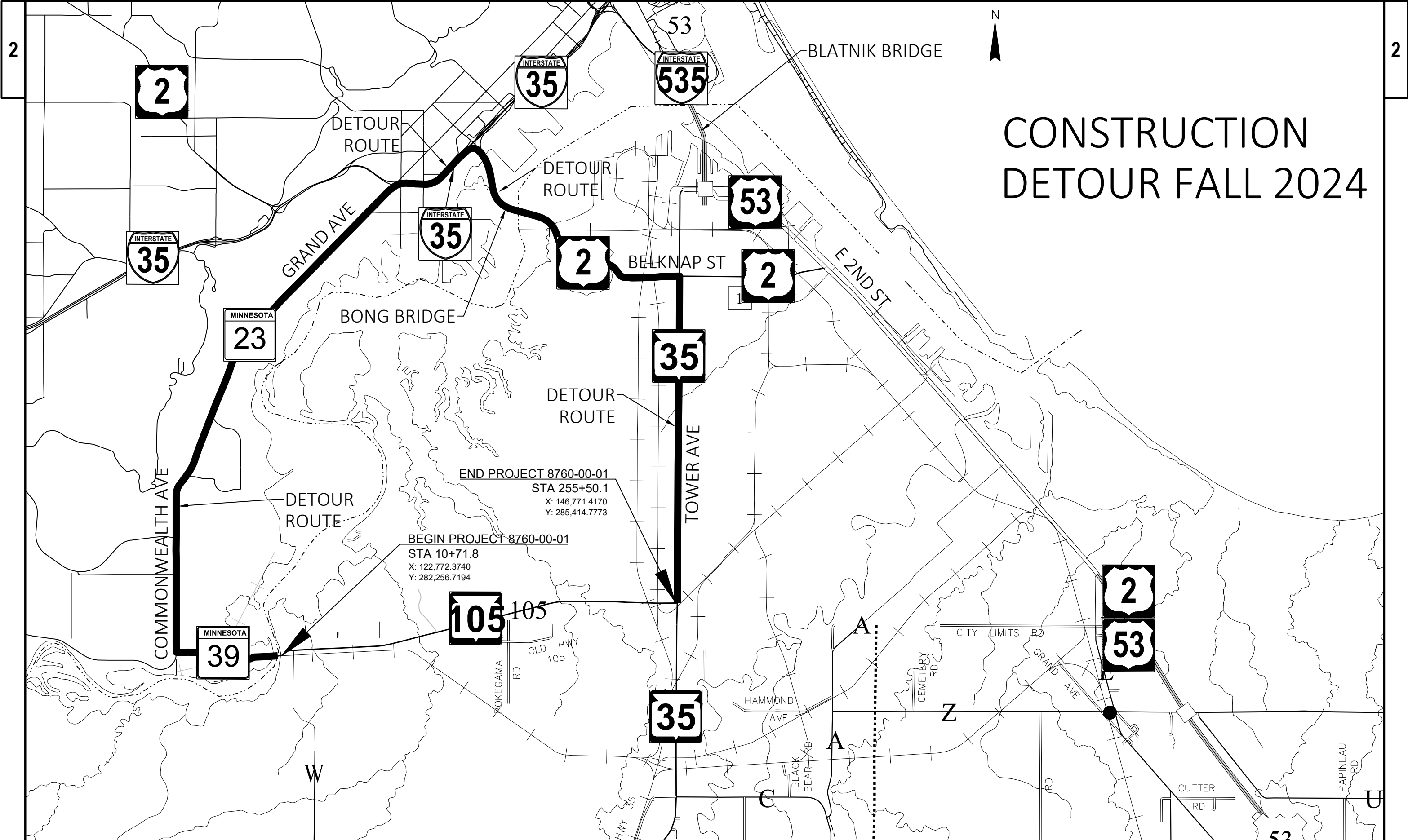
HWY: STH 105

COUNTY: DOUGLAS

PROJECT OVERVIEW

SHEET

E

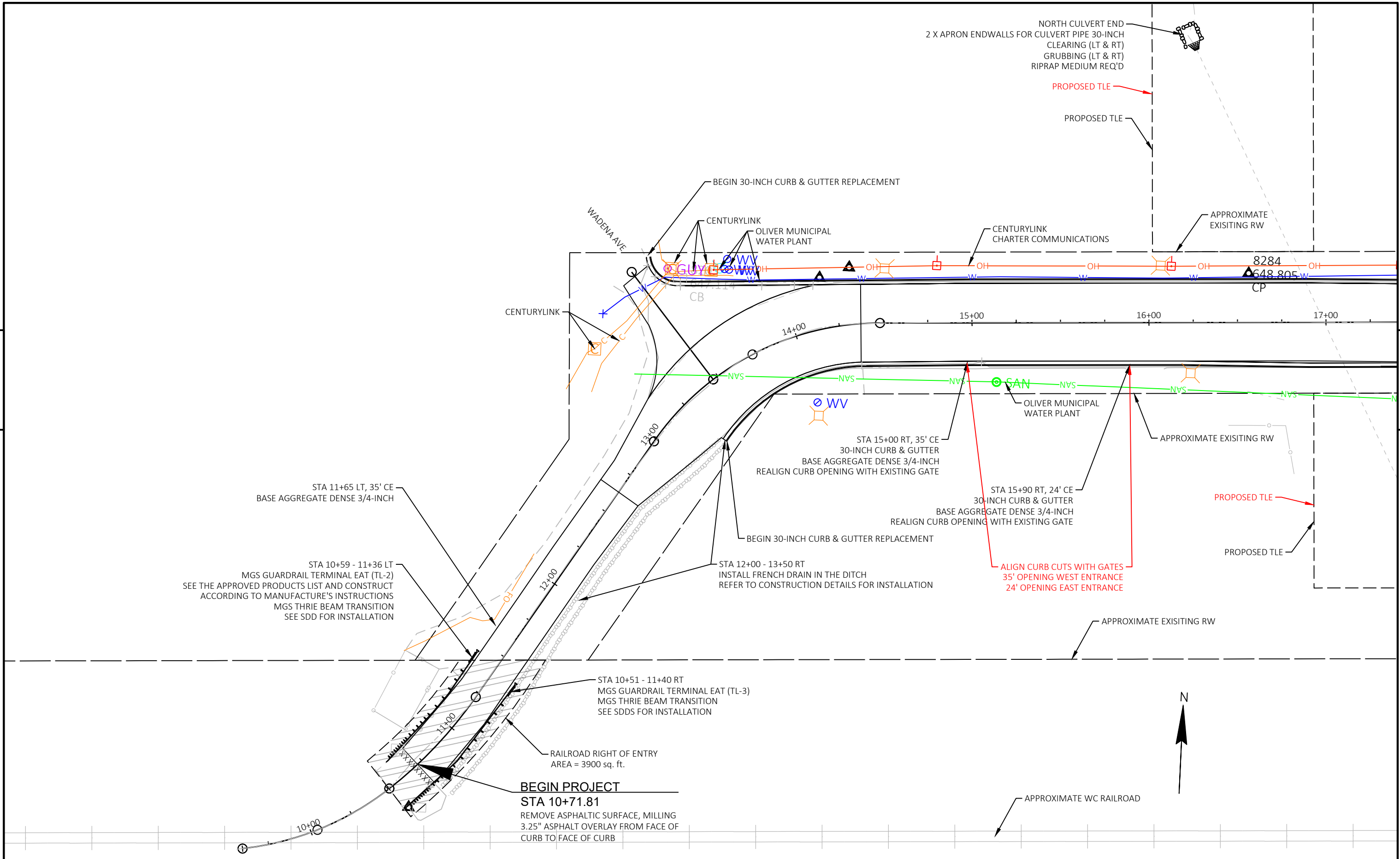


# CONSTRUCTION DETOUR FALL 2024

END PROJECT 8760-00-01  
 STA 255+50.1  
 X: 146,771.4170  
 Y: 285,414.7773

BEGIN PROJECT 8760-00-01  
 STA 10+71.8  
 X: 122,772.3740  
 Y: 282,256.7194

PROJECT NO: 8760-00-01	HWY: STH 105	COUNTY: DOUGLAS	DETOUR ROUTE - FALL 2024	SHEET	E
------------------------	--------------	-----------------	--------------------------	-------	---



NORTH CULVERT END  
 2 X APRON ENDWALLS FOR CULVERT PIPE 30-INCH  
 CLEARING (LT & RT)  
 GRUBBING (LT & RT)  
 RIPRAP MEDIUM REQ'D

PROPOSED TLE

APPROXIMATE EXISITING RW

BEGIN 30-INCH CURB & GUTTER REPLACEMENT

WADENA AVE  
 CENTURYLINK  
 OLIVER MUNICIPAL WATER PLANT

CENTURYLINK  
 CHARTER COMMUNICATIONS

8284  
 Δ648.805-W  
 CP

CENTURYLINK

14+00 15+00 16+00 17+00

5

5

STA 15+00 RT, 35' CE  
 30-INCH CURB & GUTTER  
 BASE AGGREGATE DENSE 3/4-INCH  
 REALIGN CURB OPENING WITH EXISTING GATE

STA 15+90 RT, 24' CE  
 30-INCH CURB & GUTTER  
 BASE AGGREGATE DENSE 3/4-INCH  
 REALIGN CURB OPENING WITH EXISTING GATE

PROPOSED TLE

STA 11+65 LT, 35' CE  
 BASE AGGREGATE DENSE 3/4-INCH

STA 10+59 - 11+36 LT  
 MGS GUARDRAIL TERMINAL EAT (TL-2)  
 SEE THE APPROVED PRODUCTS LIST AND CONSTRUCT  
 ACCORDING TO MANUFACTURE'S INSTRUCTIONS  
 MGS THRIE BEAM TRANSITION  
 SEE SDD FOR INSTALLATION

STA 12+00 - 13+50 RT  
 INSTALL FRENCH DRAIN IN THE DITCH  
 REFER TO CONSTRUCTION DETAILS FOR INSTALLATION

ALIGN CURB CUTS WITH GATES  
 35' OPENING WEST ENTRANCE  
 24' OPENING EAST ENTRANCE

APPROXIMATE EXISITING RW

STA 10+51 - 11+40 RT  
 MGS GUARDRAIL TERMINAL EAT (TL-3)  
 MGS THRIE BEAM TRANSITION  
 SEE SDDS FOR INSTALLATION

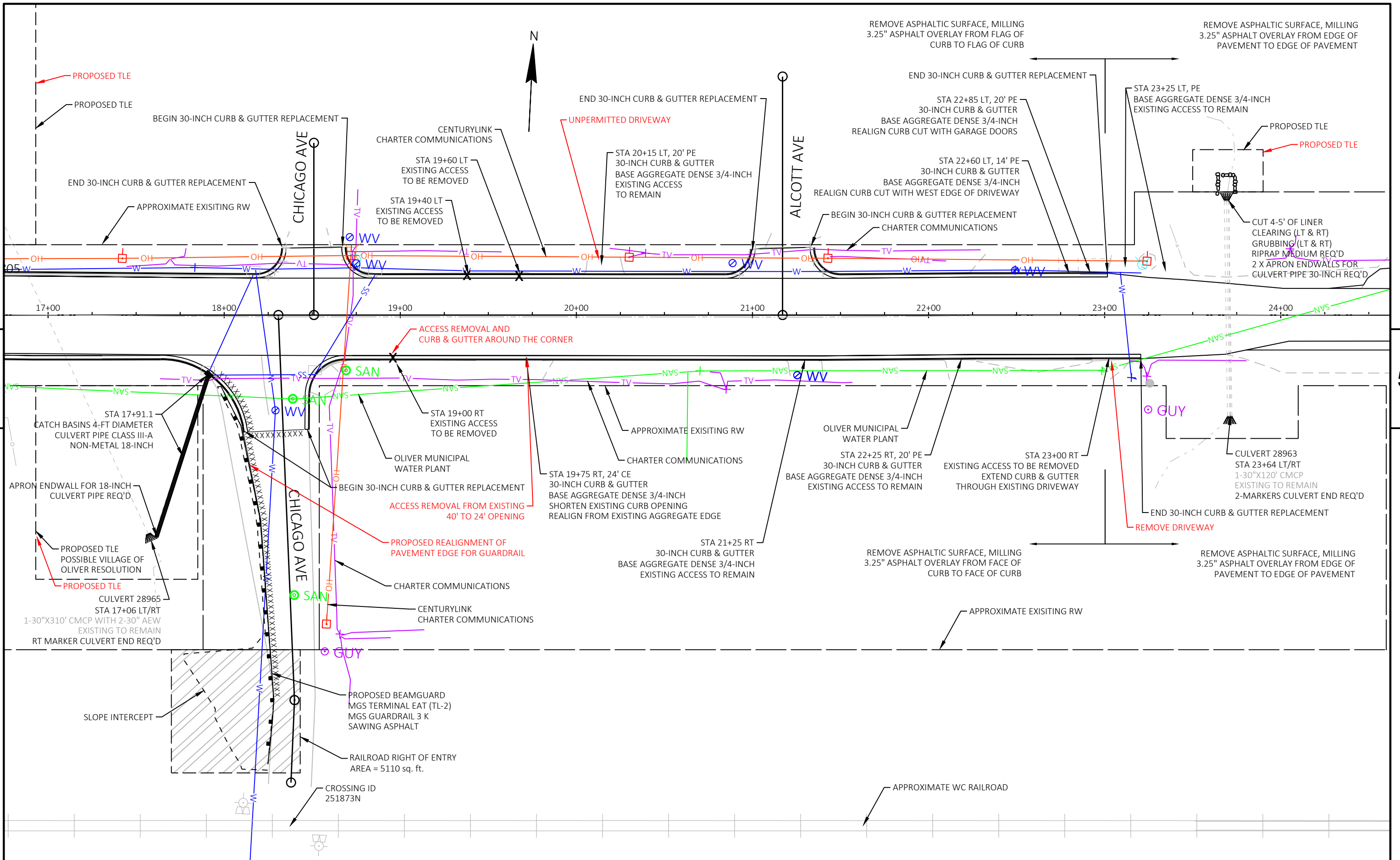
RAILROAD RIGHT OF ENTRY  
 AREA = 3900 sq. ft.

**BEGIN PROJECT**  
**STA 10+71.81**  
 REMOVE ASPHALTIC SURFACE, MILLING  
 3.25" ASPHALT OVERLAY FROM FACE OF  
 CURB TO FACE OF CURB

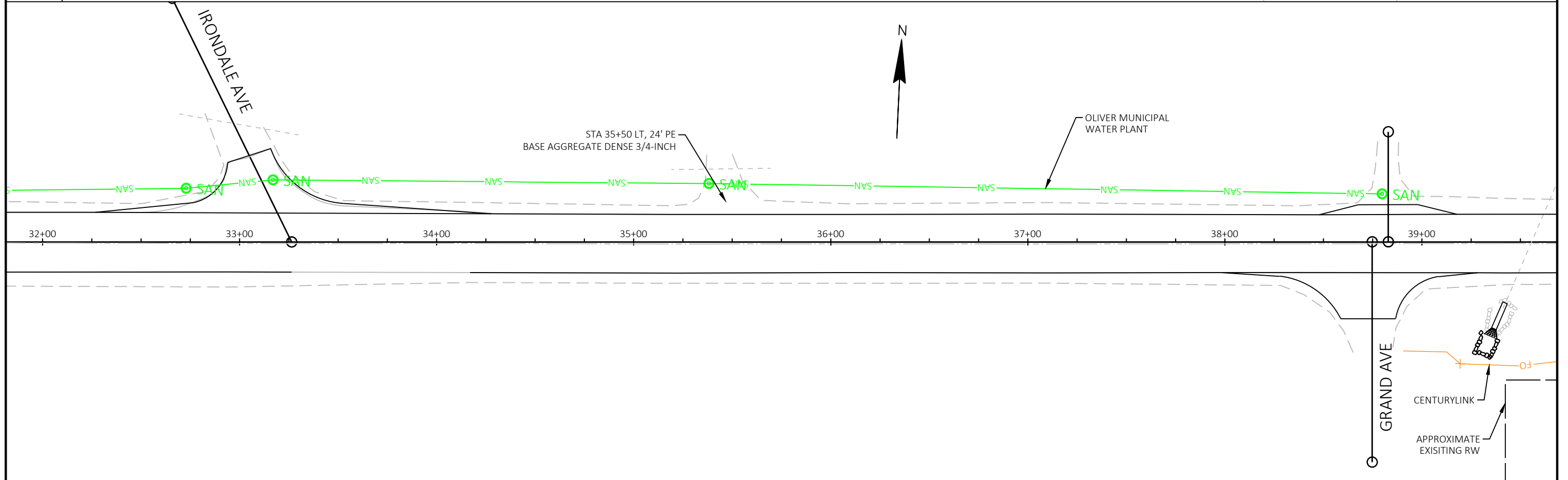
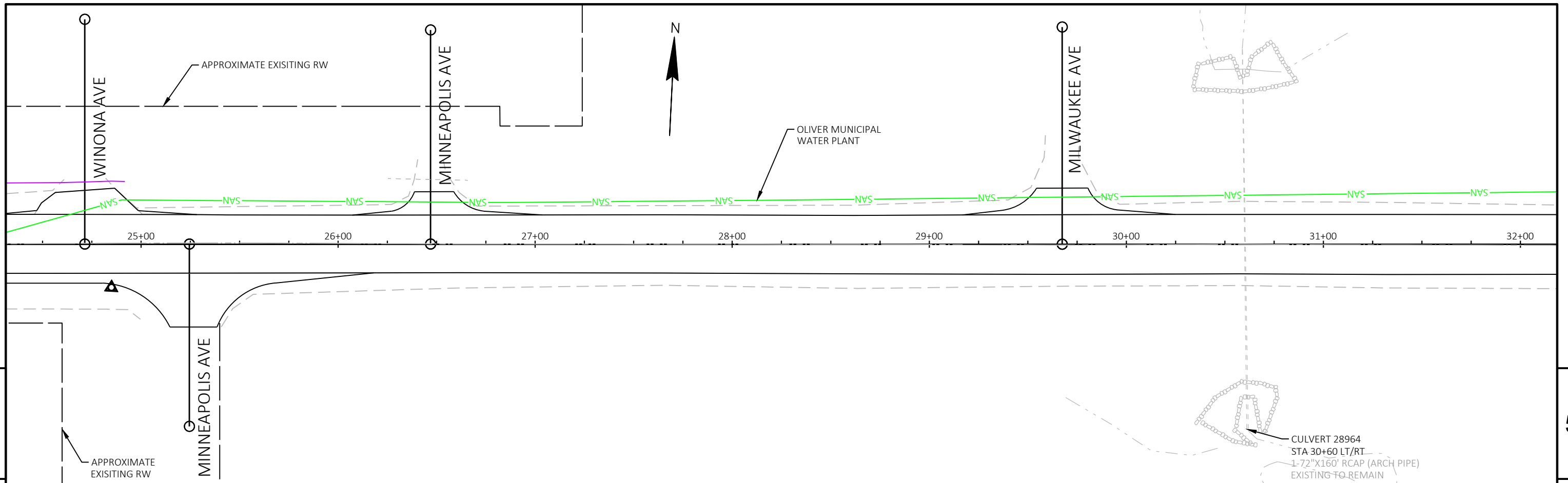


APPROXIMATE WC RAILROAD

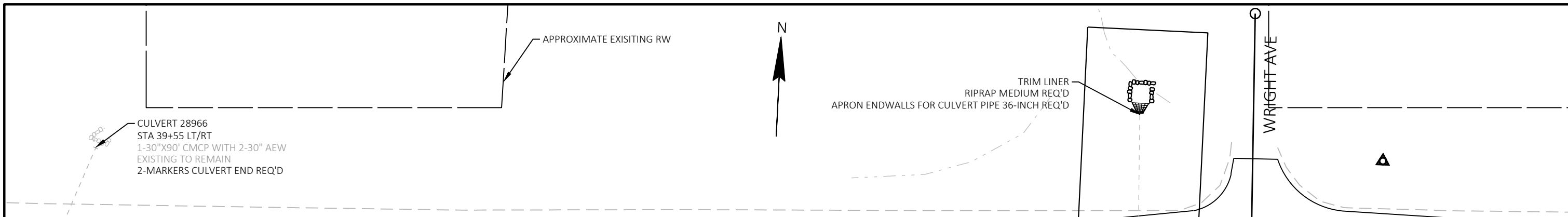
PROJECT NO: 8760-00-01	HWY: STH 105	COUNTY: DOUGLAS	PLAN SHEET	SHEET	E
------------------------	--------------	-----------------	------------	-------	---



PROJECT NO: 8760-00-01	HWY: STH 105	COUNTY: DOUGLAS	PLAN SHEET	SHEET	E
------------------------	--------------	-----------------	------------	-------	---



PROJECT NO: 8760-00-01	HWY: STH 105	COUNTY: DOUGLAS	PLAN SHEET	SHEET	E
------------------------	--------------	-----------------	------------	-------	---

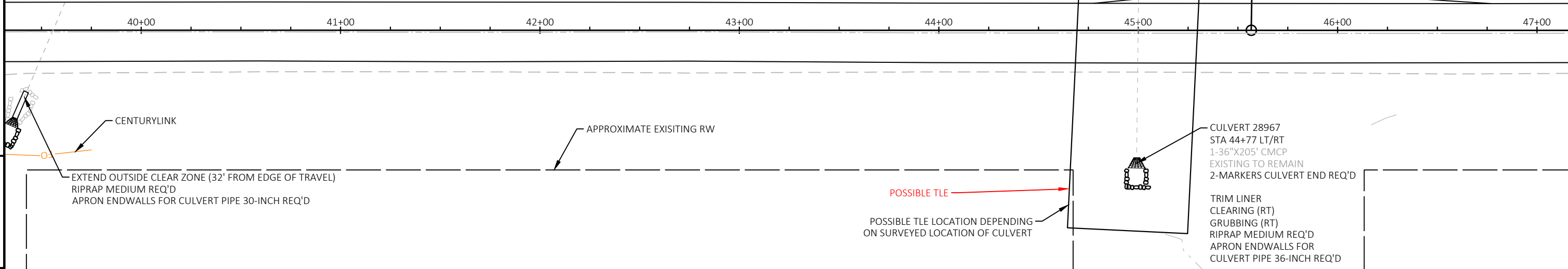


CULVERT 28966  
 STA 39+55 LT/RT  
 1-30"X90' CMCP WITH 2-30" AEW  
 EXISTING TO REMAIN  
 2-MARKERS CULVERT END REQ'D

TRIM LINER  
 RIPRAP MEDIUM REQ'D  
 APRON ENDWALLS FOR CULVERT PIPE 36-INCH REQ'D

WRIGHT AVE

40+00 41+00 42+00 43+00 44+00 45+00 46+00 47+00



CENTURYLINK

APPROXIMATE EXISTING RW

POSSIBLE TLE  
 POSSIBLE TLE LOCATION DEPENDING  
 ON SURVEYED LOCATION OF CULVERT

CULVERT 28967  
 STA 44+77 LT/RT  
 1-36"X205' CMCP  
 EXISTING TO REMAIN  
 2-MARKERS CULVERT END REQ'D

TRIM LINER  
 CLEARING (RT)  
 GRUBBING (RT)  
 RIPRAP MEDIUM REQ'D  
 APRON ENDWALLS FOR  
 CULVERT PIPE 36-INCH REQ'D

EXTEND OUTSIDE CLEAR ZONE (32' FROM EDGE OF TRAVEL)  
 RIPRAP MEDIUM REQ'D  
 APRON ENDWALLS FOR CULVERT PIPE 30-INCH REQ'D

47+00 48+00 49+00 50+00 51+00 52+00 53+00 54+00

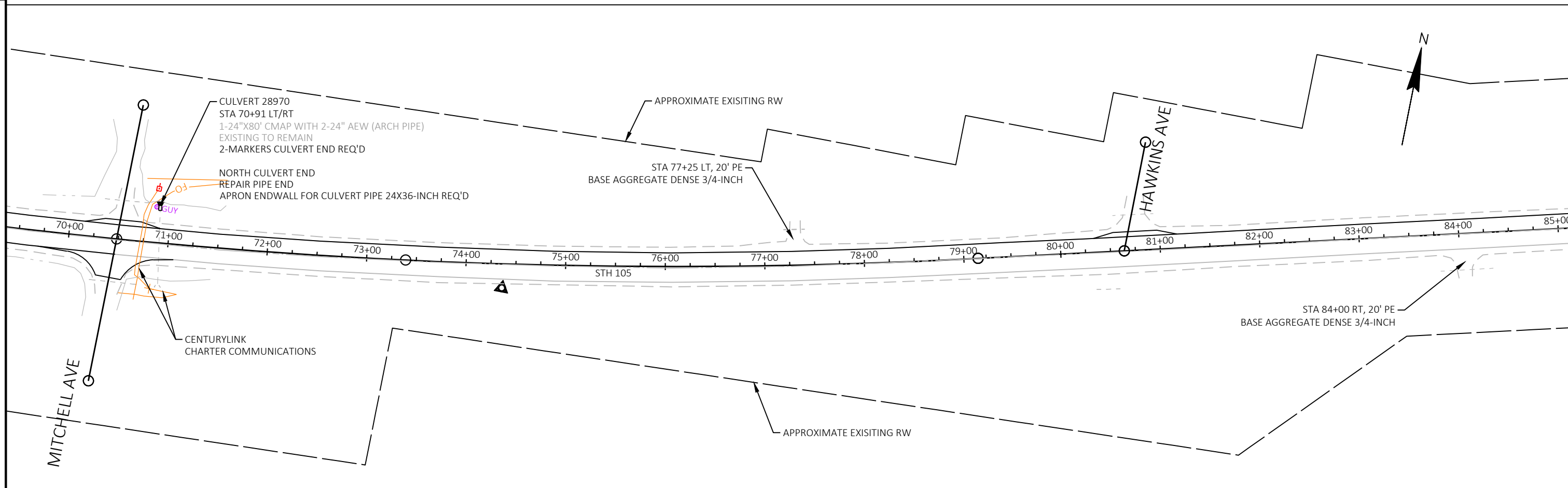
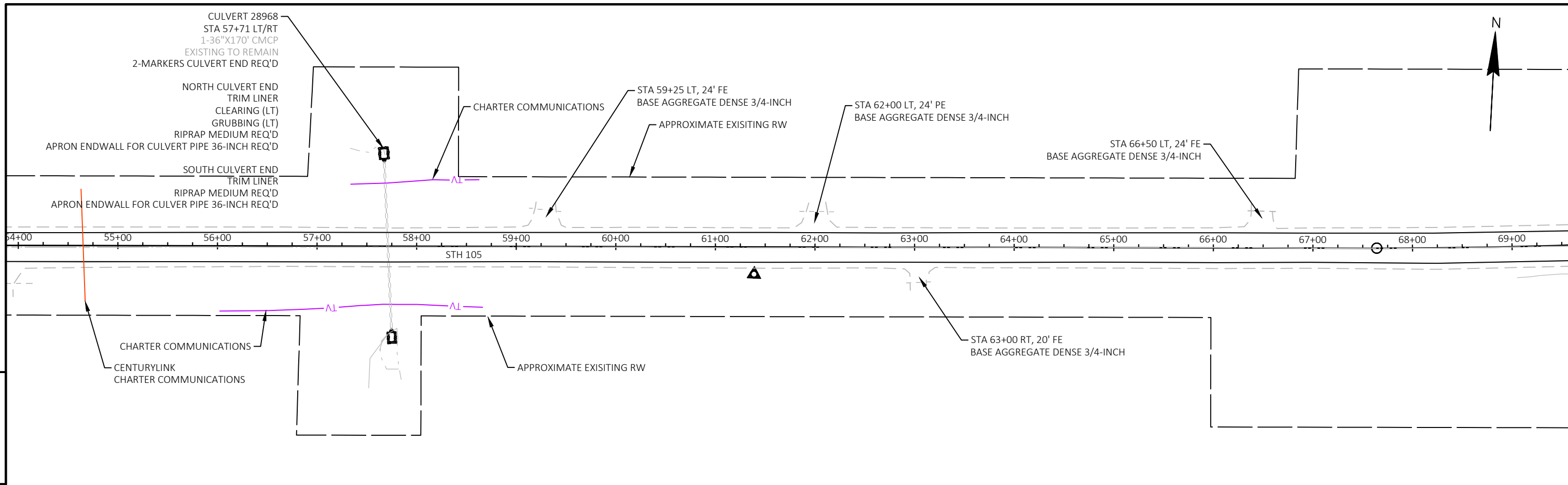
APPROXIMATE EXISTING RW

STA 48+50 RT, 35' CE  
 BASE AGGREGATE DENSE 3/4-INCH

STA 53+75 RT, 20' FE  
 BASE AGGREGATE DENSE 3/4-INCH

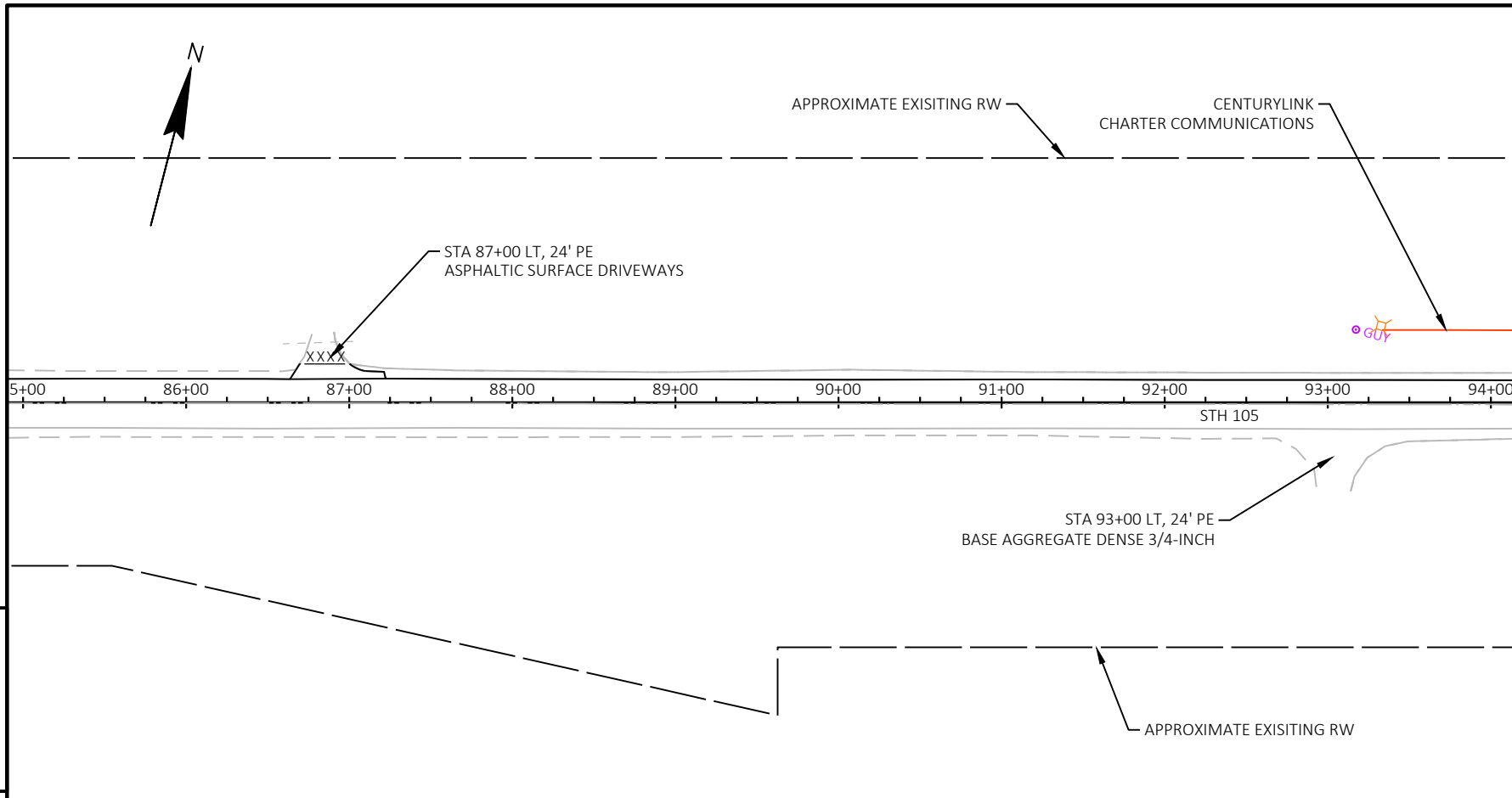
APPROXIMATE EXISTING RW

PROJECT NO: 8760-00-01	HWY: STH 105	COUNTY: DOUGLAS	PLAN SHEET	SHEET	<b>E</b>
------------------------	--------------	-----------------	------------	-------	----------



PROJECT NO: 8760-00-01	HWY: STH 105	COUNTY: DOUGLAS	PLAN SHEET	SHEET	E
------------------------	--------------	-----------------	------------	-------	---

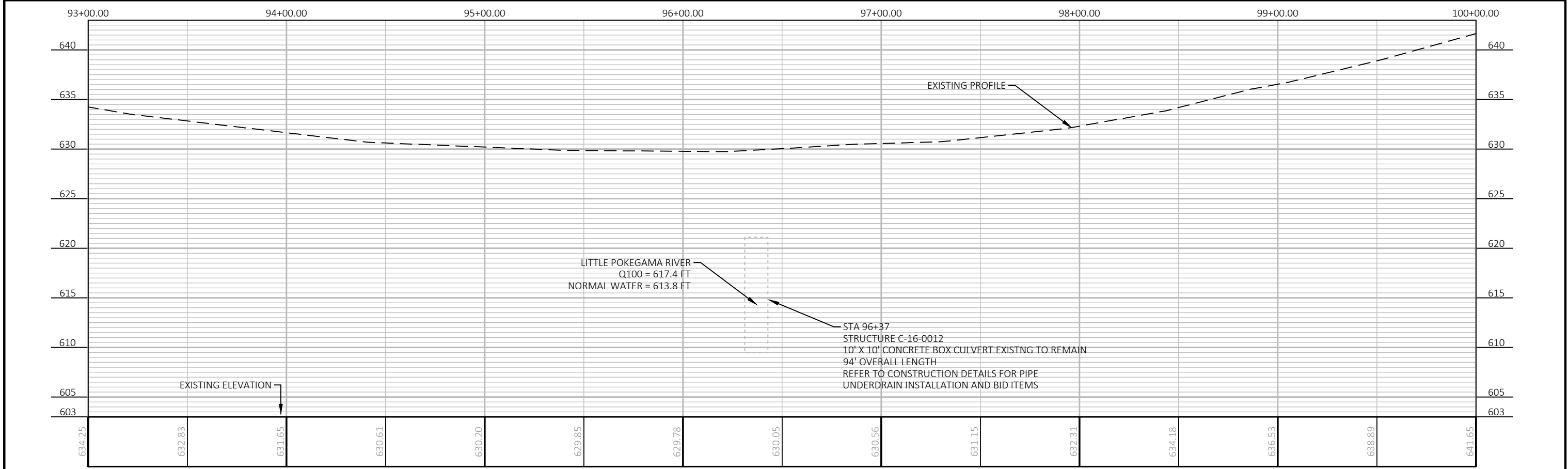
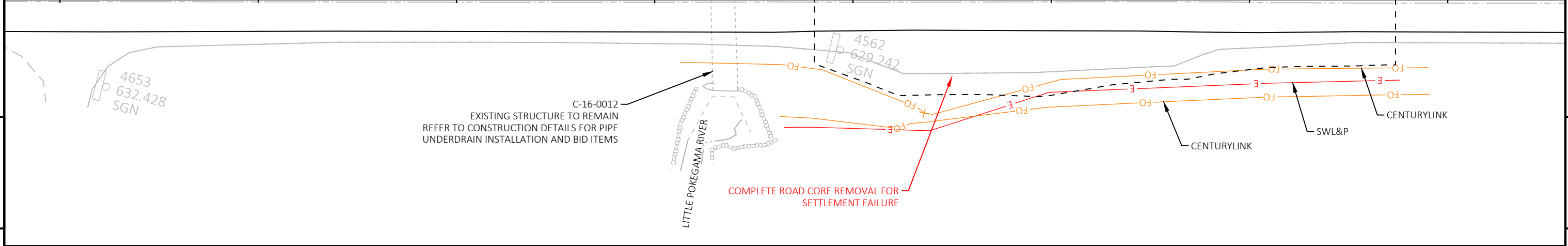
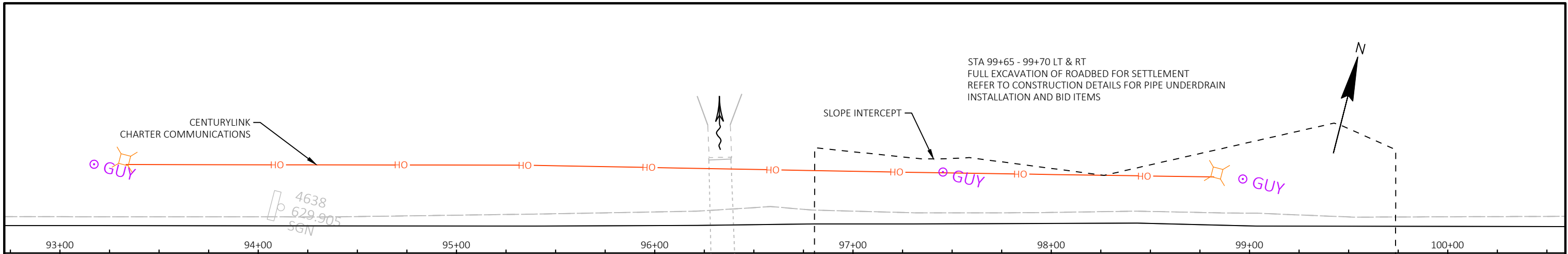




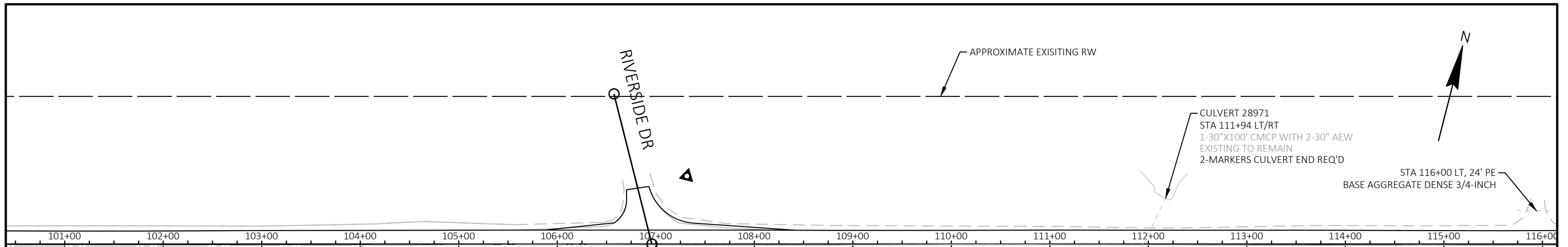
5

5

PROJECT NO: 8760-00-01	HWY: STH 105	COUNTY: DOUGLAS	PLAN SHEET	SHEET	<b>E</b>
------------------------	--------------	-----------------	------------	-------	----------

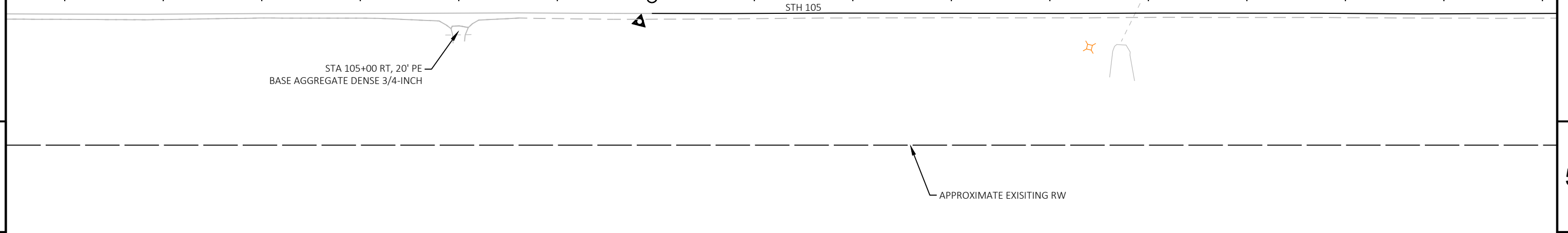


PROJECT NO: 8760-00-01      HWY: STH 105      COUNTY: DOUGLAS      PLAN AND PROFILE: PLAN SHEET      SHEET 5

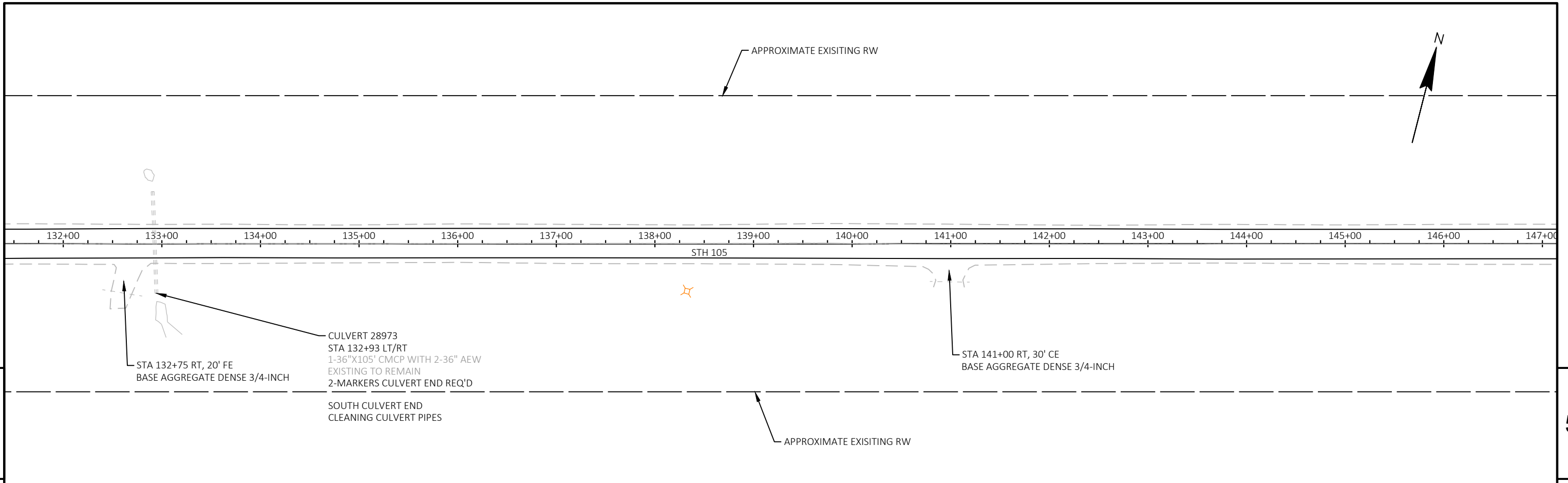


5

5

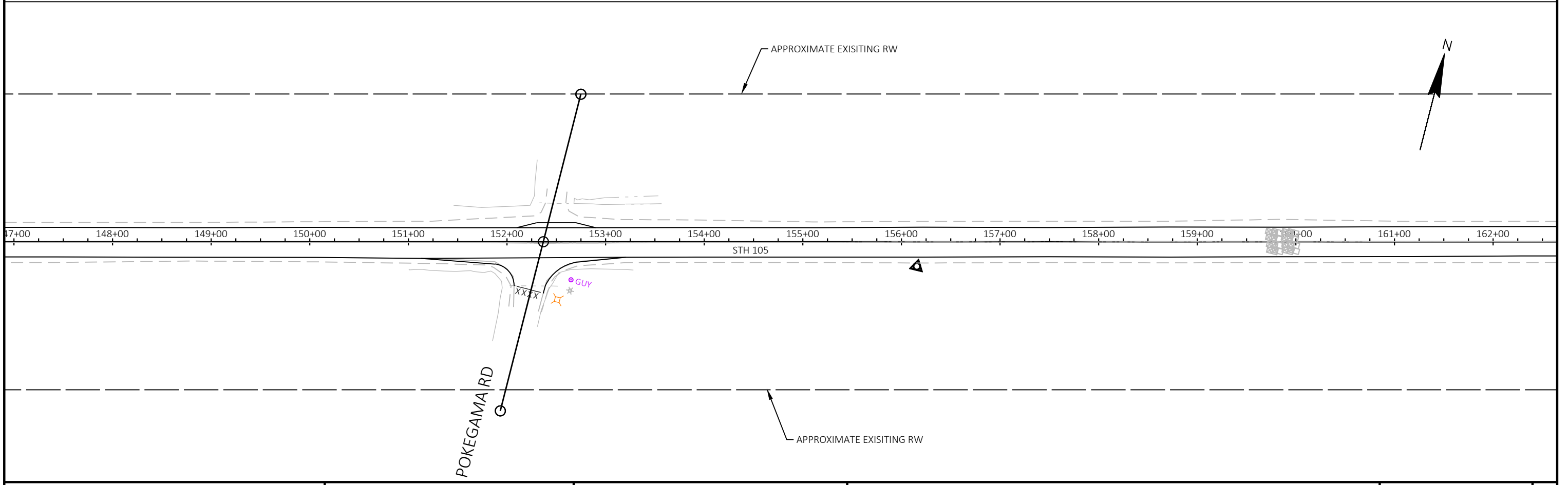


PROJECT NO: 8760-00-01	HWY: STH 105	COUNTY: DOUGLAS	PLAN SHEET	SHEET	E
------------------------	--------------	-----------------	------------	-------	---

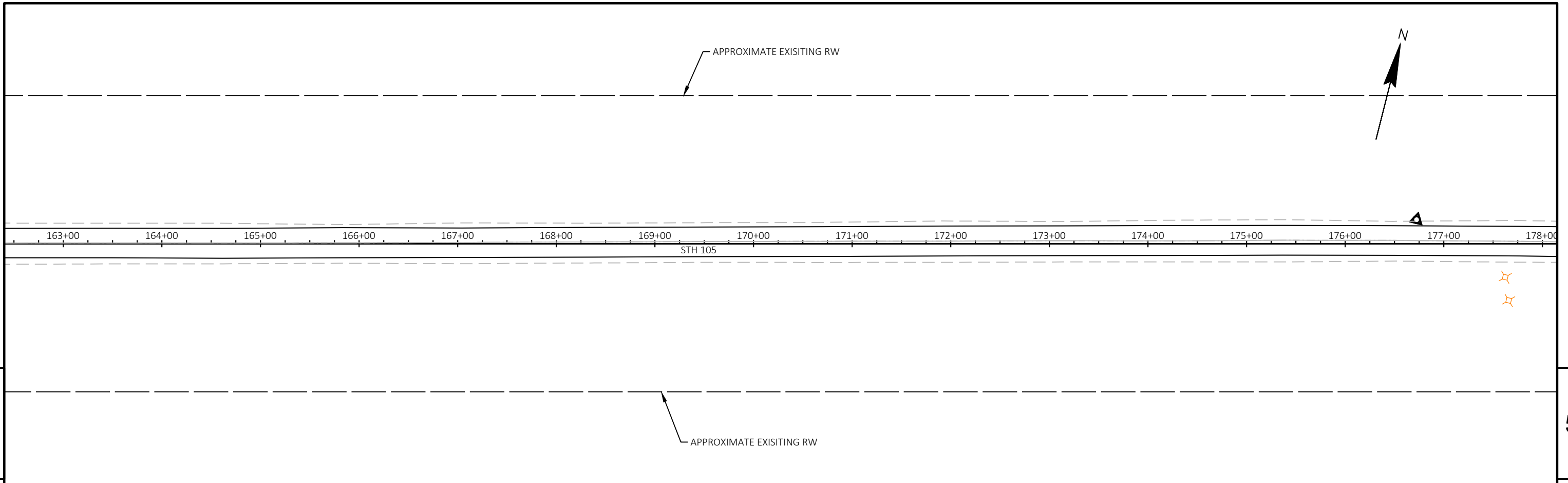


5

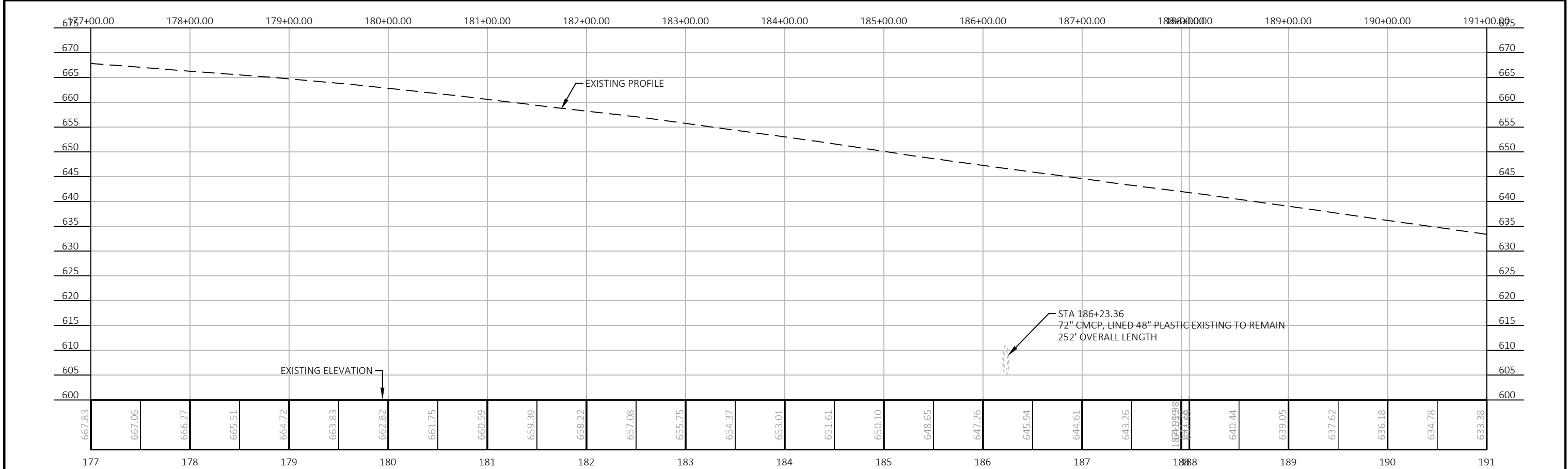
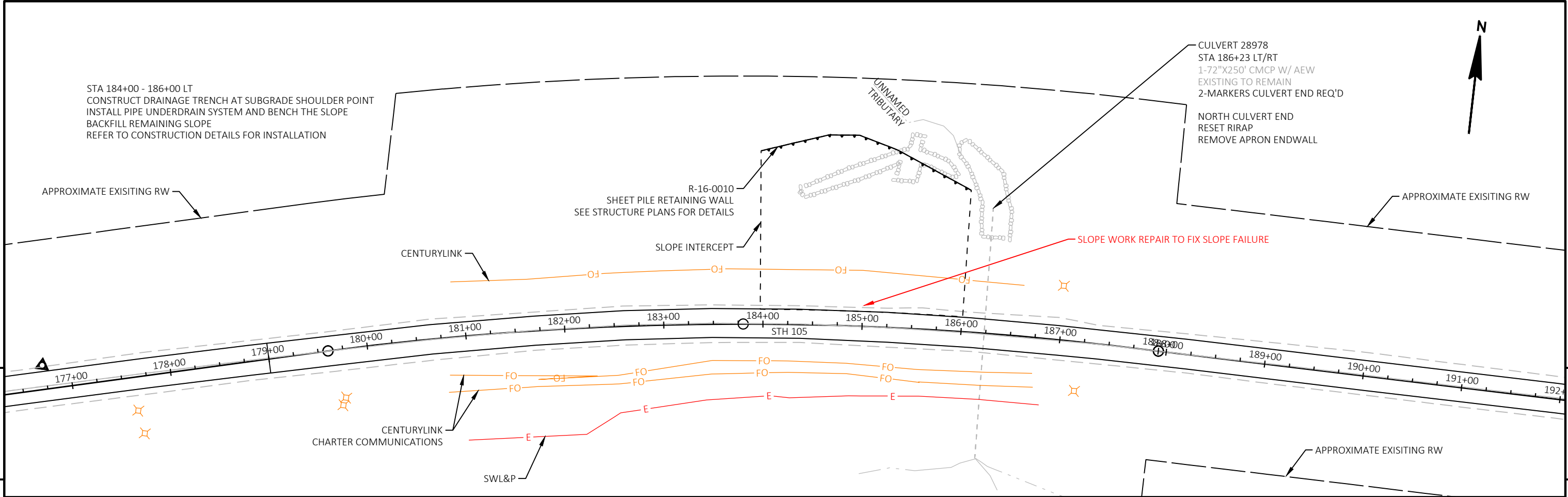
5



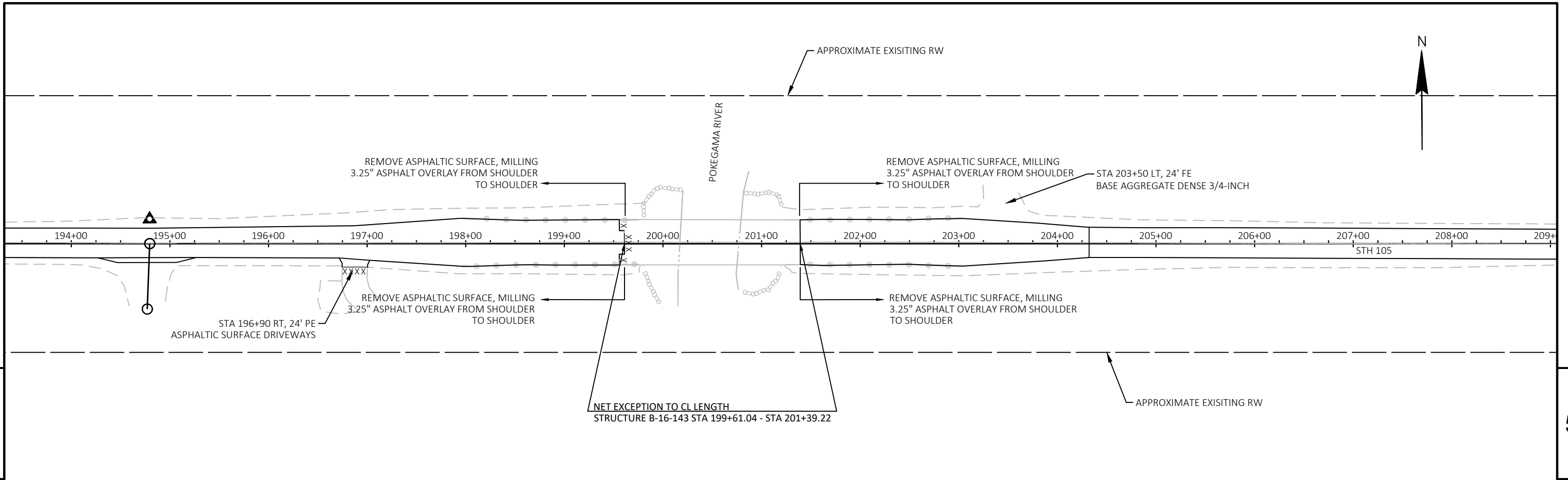
PROJECT NO: 8760-00-01	HWY: STH 105	COUNTY: DOUGLAS	PLAN SHEET	SHEET	E
------------------------	--------------	-----------------	------------	-------	---



PROJECT NO: 8760-00-01	HWY: STH 105	COUNTY: DOUGLAS	PLAN SHEET	SHEET	E
------------------------	--------------	-----------------	------------	-------	---

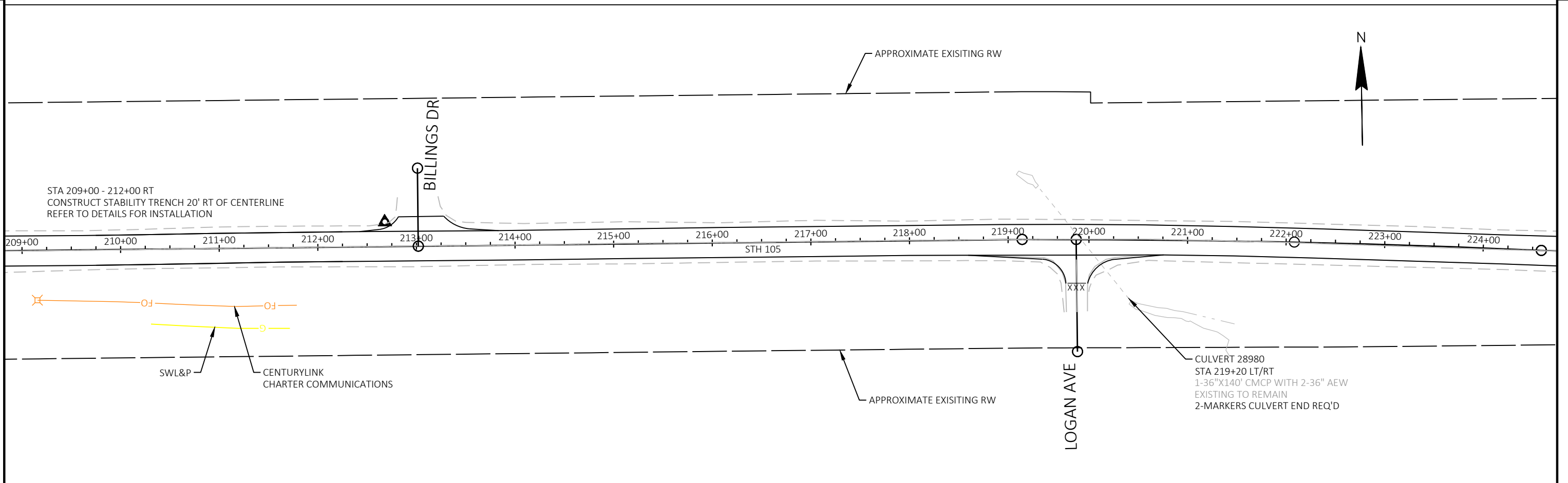


PROJECT NO: 8760-00-01      HWY: STH 105      COUNTY: DOUGLAS      PLAN AND PROFILE: PLAN SHEET      SHEET 5

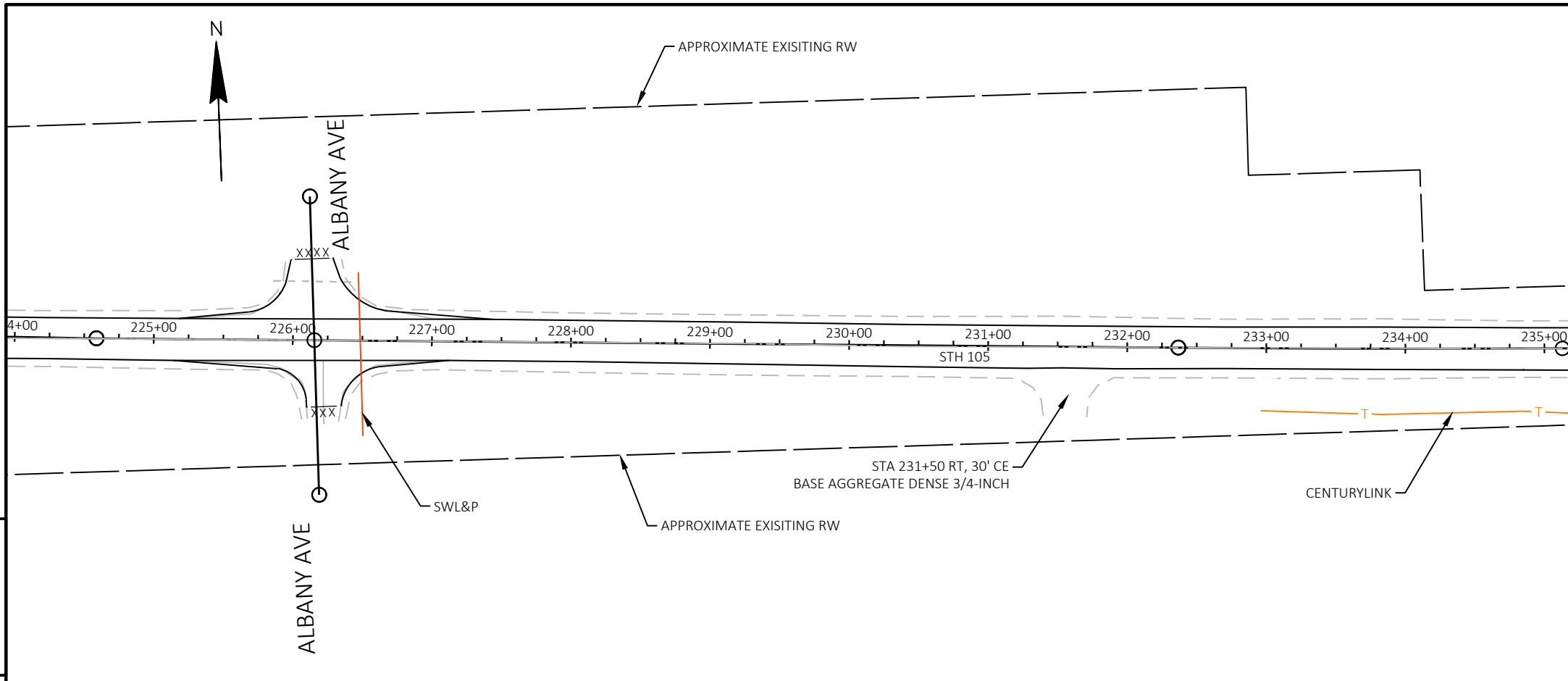


5

5



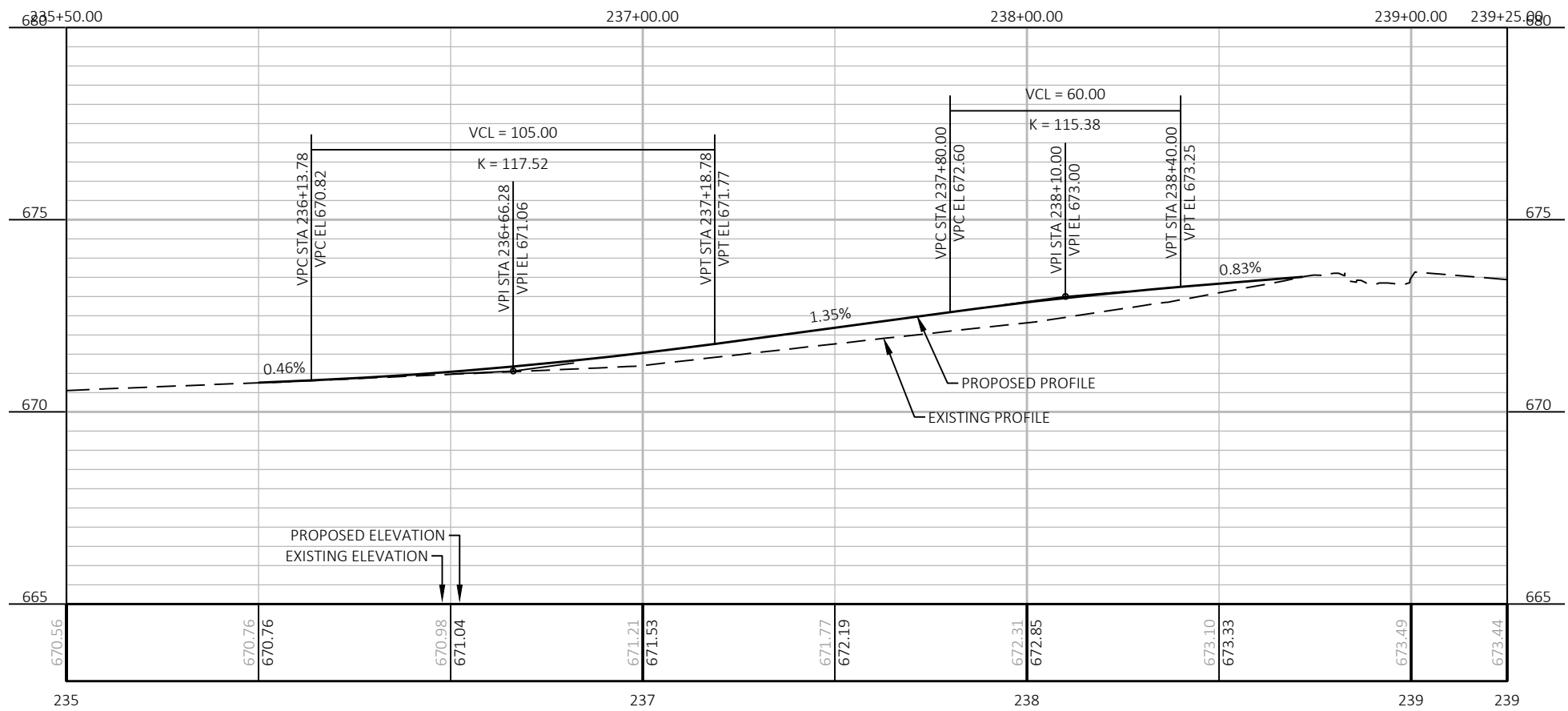
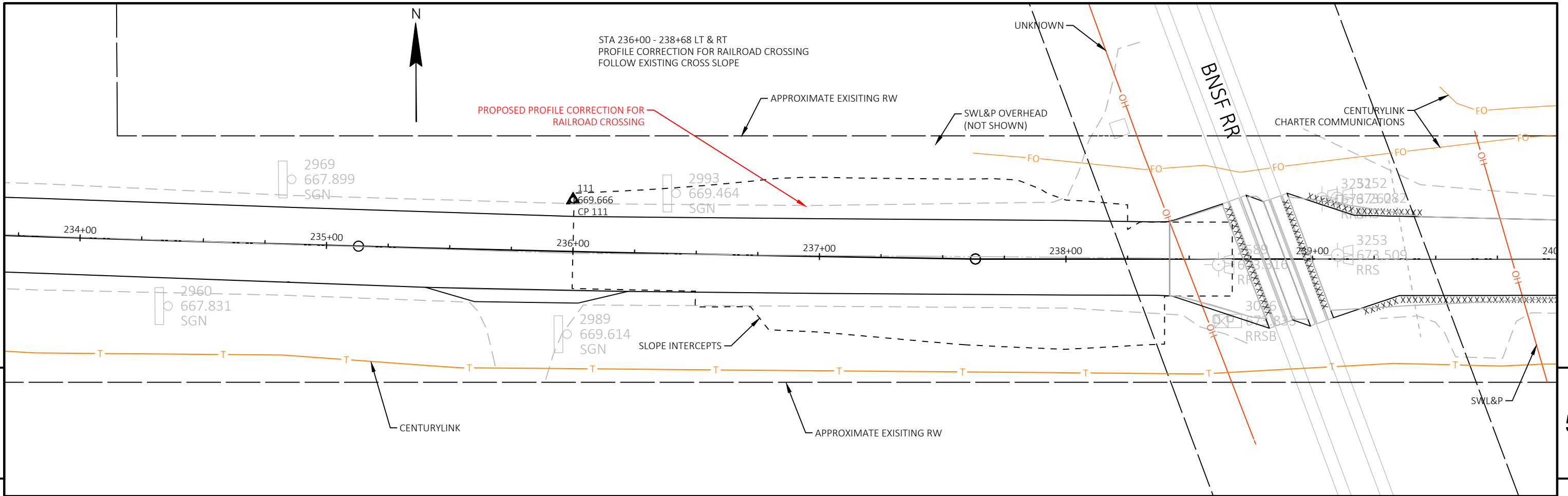
PROJECT NO: 8760-00-01	HWY: STH 105	COUNTY: DOUGLAS	PLAN SHEET	SHEET	E
------------------------	--------------	-----------------	------------	-------	---



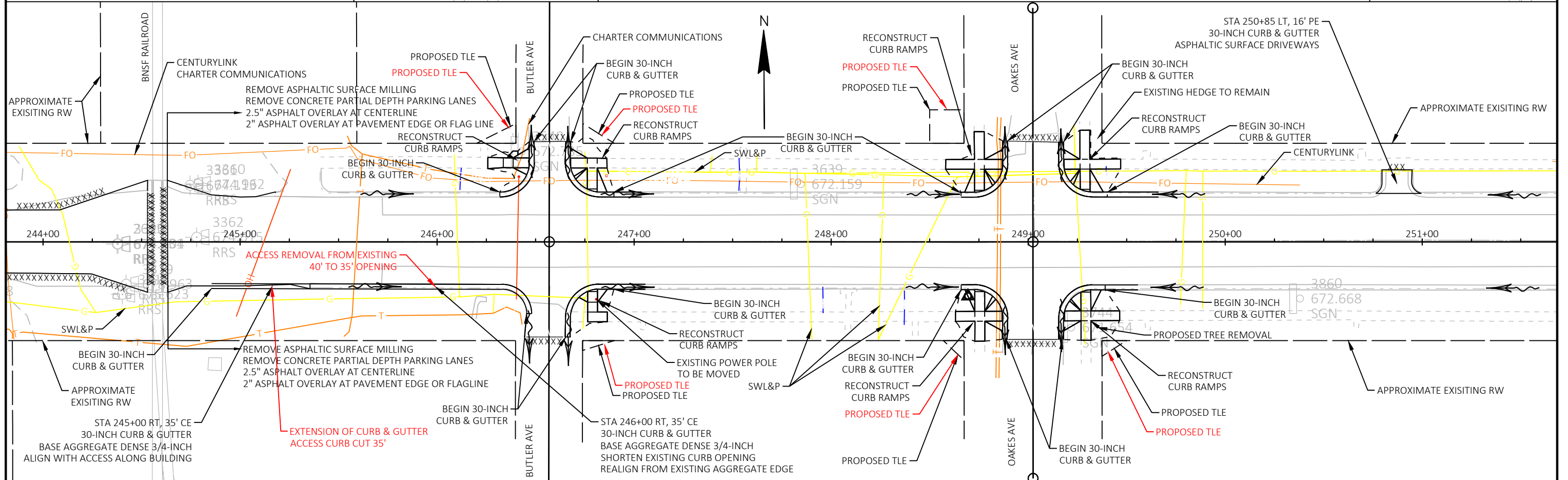
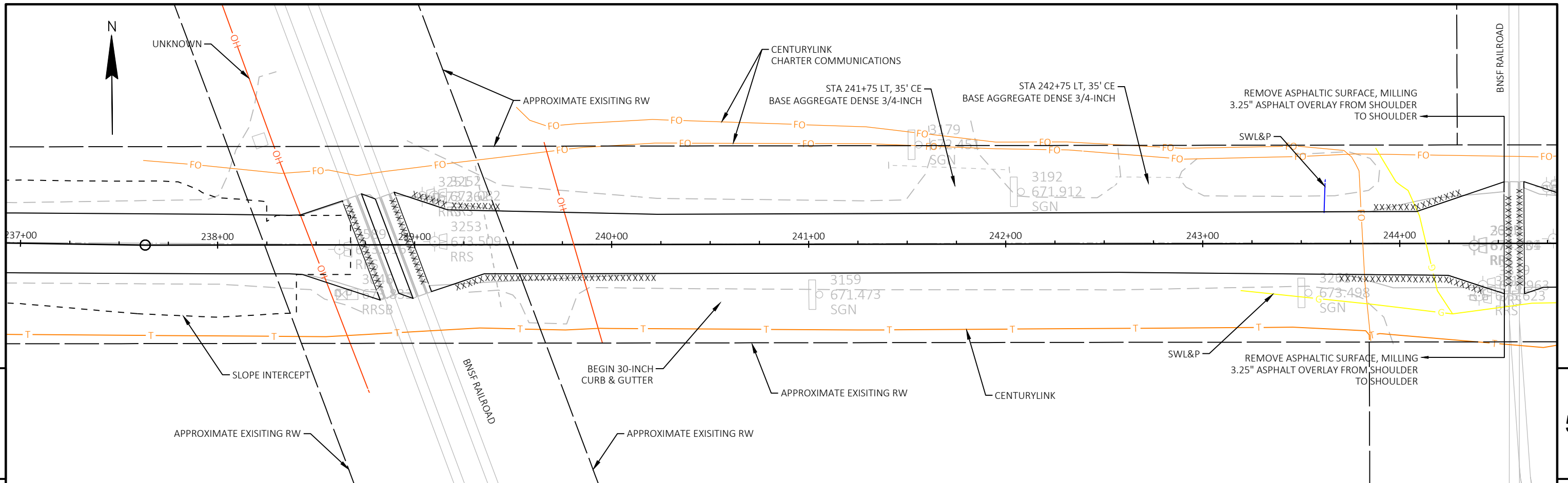
5

5

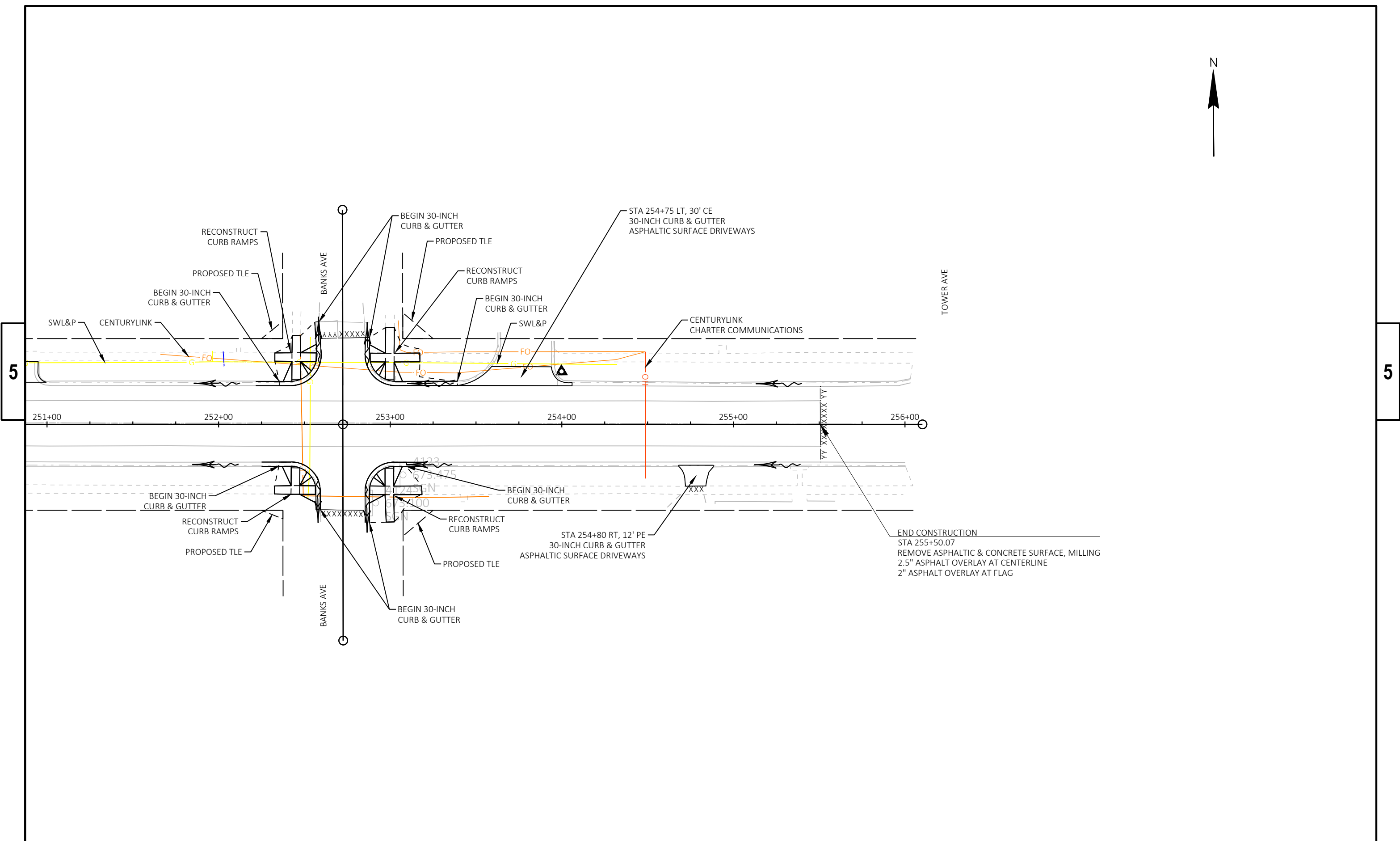




PROJECT NO: 8760-00-01      HWY: STH 105      COUNTY: DOUGLAS      PLAN AND PROFILE: PLAN SHEET      SHEET 5



PROJECT NO: 8760-00-01      HWY: STH 105      COUNTY: DOUGLAS      PLAN SHEET      SHEET      E



5

5

PROJECT NO: 8760-00-01	HWY: STH 105	COUNTY: DOUGLAS	PLAN SHEET	SHEET	E
------------------------	--------------	-----------------	------------	-------	---