



# **WIS 105 Resurfacing Project**

## **MN/WI State Line to WIS 35 (Tower Avenue)**

**Stephanie King, Design Project Manager**  
**Adam Hogquist, Design Project Leader**

### **Public Involvement Meeting**

**Oliver Village Hall, 2125 E. State St., Superior, WI 54880**

**Thursday, Feb. 23, 2023**



# Meeting Overview

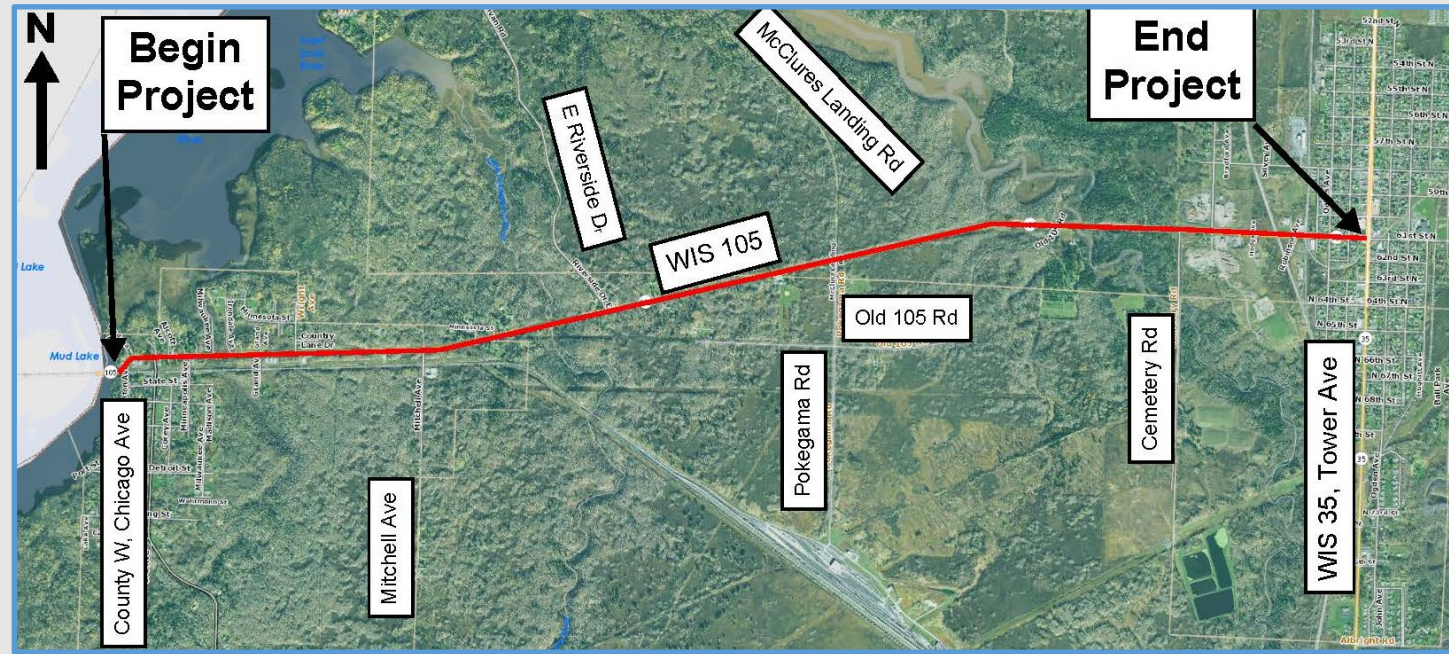
- Location
- Purpose
- Need
- Details and Conceptual Solutions
- Schedule
- Traffic Impacts
- Business Coordination
- Public Comment





# Location

- Douglas County, Wis.
  - Begins: Wisconsin side of the Oliver Bridge
  - Ends: WIS 35 in the city of Superior
    - Project length: 4.7 miles



# Purpose

- Preserve and maintain the service life of the roadway surface.
- Provide Americans With Disabilities Act- (ADA) compliant pedestrian curb ramps in the city of Superior.
- Improve the condition of select culverts and road core in locations of settlement.





# Need

- Deteriorated pavement on WIS 105
- Non-ADA compliant pedestrian curb ramps in the city of Superior
- Deteriorated culverts
- Failing road core soil conditions in select locations



Settlement area at the Little Pokegama River



# Details and Conceptual Solutions

- Replace guardrail by the Oliver Bridge.
- Make curb and gutter repairs in the village of Oliver.
- Repair culvert at spot locations.
- Repair the settlement area at the Little Pokegama River.

Curb and gutter in Oliver



# Details and Conceptual Solutions



- Repair the roadway embankment west of the Pokegama River.



Parking lanes in city of Superior

- Upgrade or install curb ramps at pedestrian crossings.
- Mill and resurface parking lanes.

# Details and Conceptual Solutions

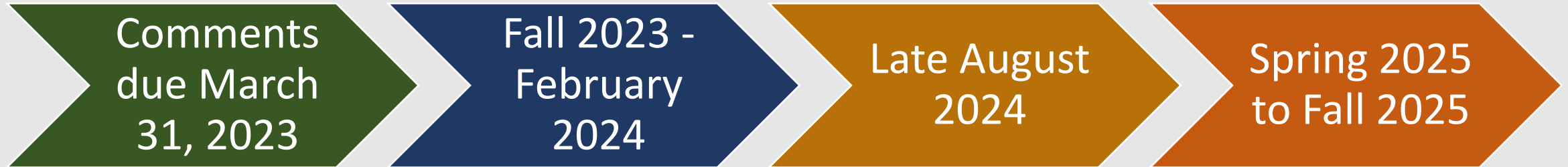
- Mill off some the existing asphalt.
- Overlay the roadway with new asphalt, including the parking lanes in the city of Superior.
- Place shoulder rumble strips.
- Refresh the gravel shoulders.
- Paint roadway markings.







# Schedule



- Environmental document
- Preliminary design and investigation

- Real estate purchasing
- Final design plans and contract language

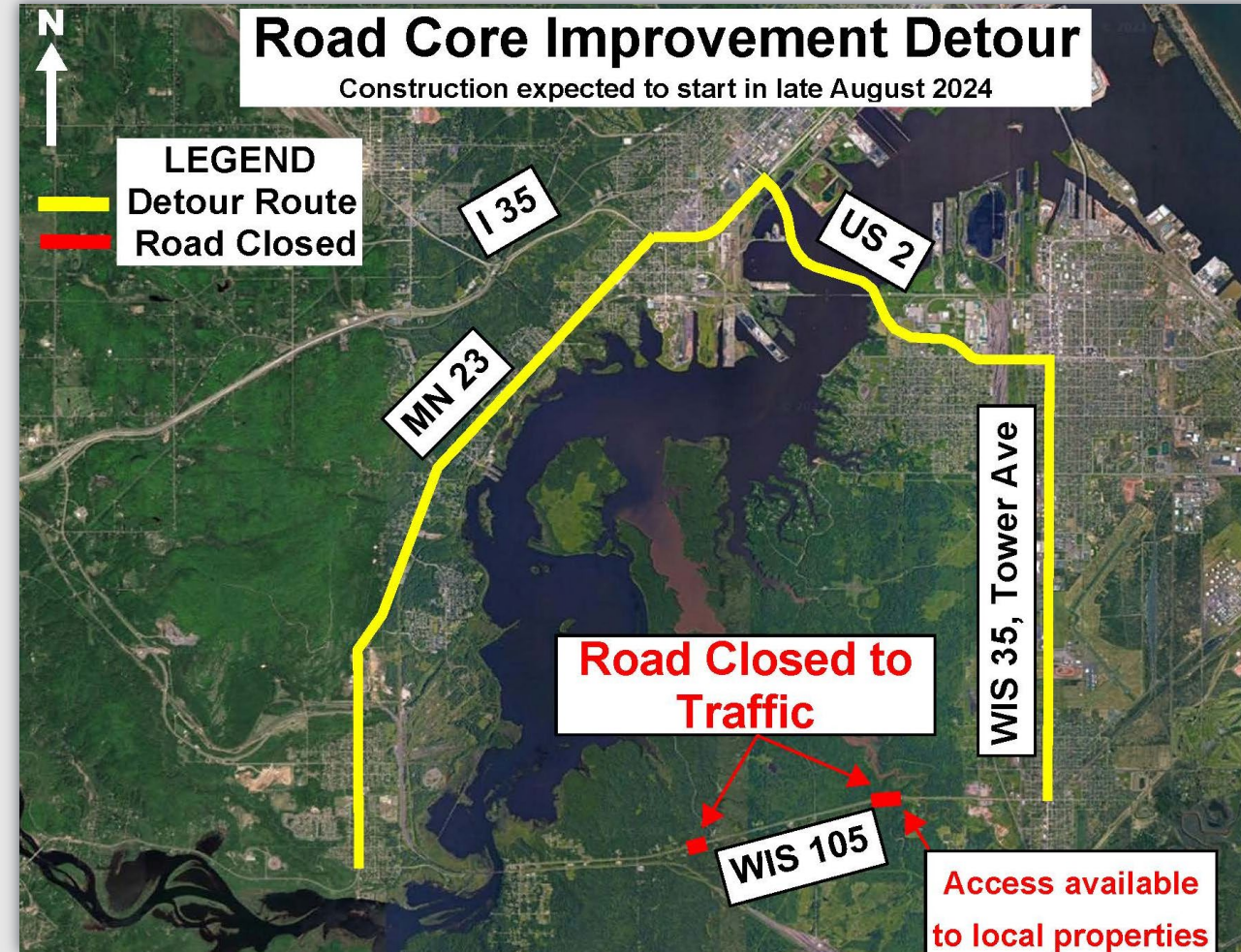
- Construction begins to repair the roadway settlement

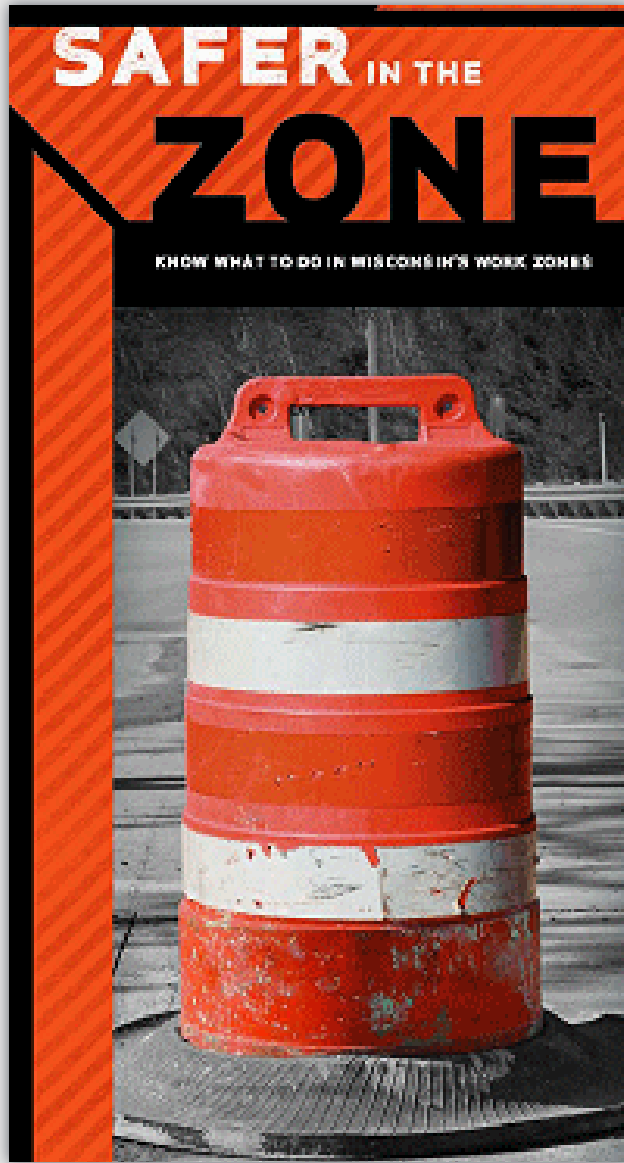
- Construction resumes to complete other repair work prior to milling and paving



# Traffic Impacts - 2024

- WIS 105 will be closed to through traffic.
  - Detour: MN 23, US 2 and WIS 35
  - Access to properties during construction will be maintained but may be by alternative routes.





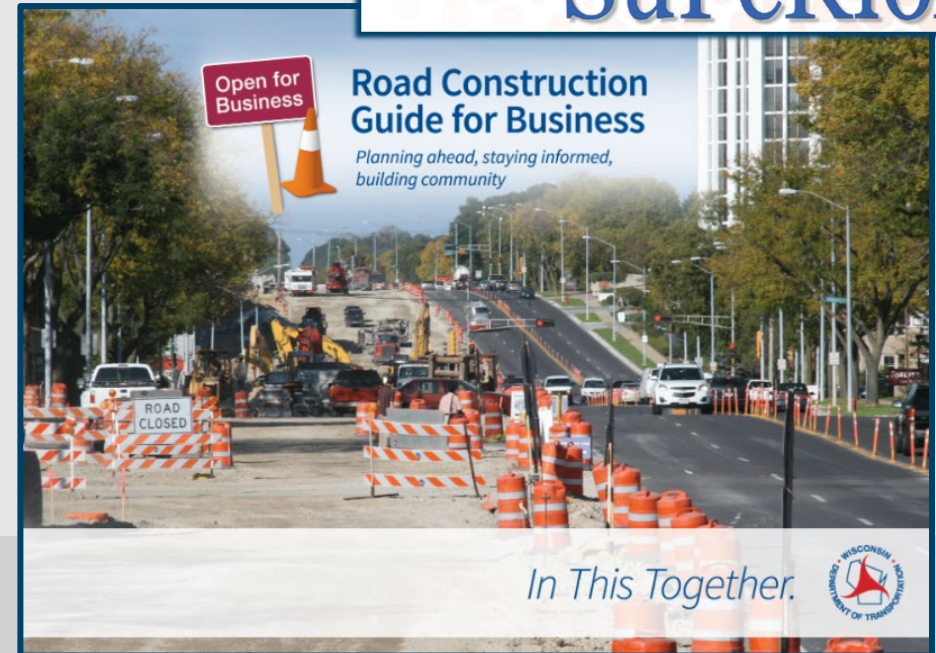
# Traffic Impacts - 2025

- WIS 105 will remain open to traffic.
- Motorists might encounter lane closures controlled by flagging.
- Delays should be expected when traveling through the work zone.



# Business Coordination

- Visit [wisconsindot.gov/together](http://wisconsindot.gov/together)
  - Tips, tools and resources
- Project team is here to help
  - What information would help you...
    - Inform customers about the project?
    - Coordinate with suppliers?
    - Communicate with employees?



# Public Comment

- **Submit comments to WisDOT Project Leader Adam Hogquist by:**
  - Phone: (715) 395-3040
  - Email: adam.hogquist@dot.wi.gov
  - Mail: WisDOT Northwest Region- Superior  
1701 N. 4th St.  
Superior, WI 54880-1068  
Attn.: Adam Hogquist
  - Comment form:
    - <https://wisconsindot.gov/Pages/projects/by-region/nw/wis105/default.aspx>

**Public  
comment  
period ends  
March 31, 2023**

