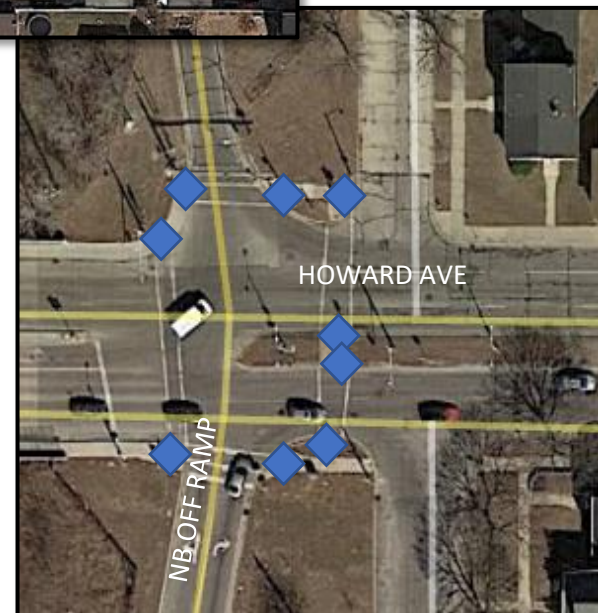
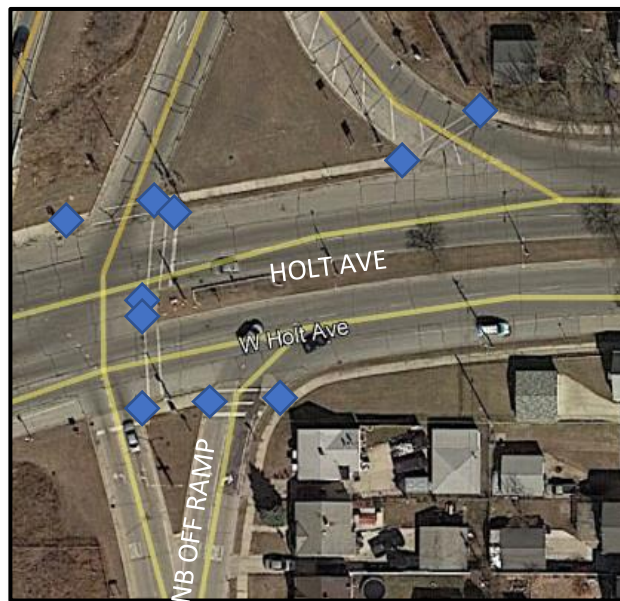


CANAL ST

IH-33 Ramp Rehabilitation

- Resurface / Pavement Repair on freeway service ramps.
- Pedestrian curb ramp improvements.
- Thin Polymer overlay on Howard and Lapham overpasses.
- Approach slab repair SB on ramp from 9th Street and Mineral Street
- Raised crosswalks at 9th Street and Mineral Street & 9th Street and Walker Street
- Signal replacement at 6th Street and Mineral Street and I-43 NB & Holt Avenue
- Miscellaneous guardrail improvements

NATIONAL AVE



Legend

- Concrete Pavement Repair / Replacement
- HMA Mill and Overlay
- Thin Polymer Overlay
- ◆ Pedestrian Improvements