

PROJECT NO: 2310-13-70

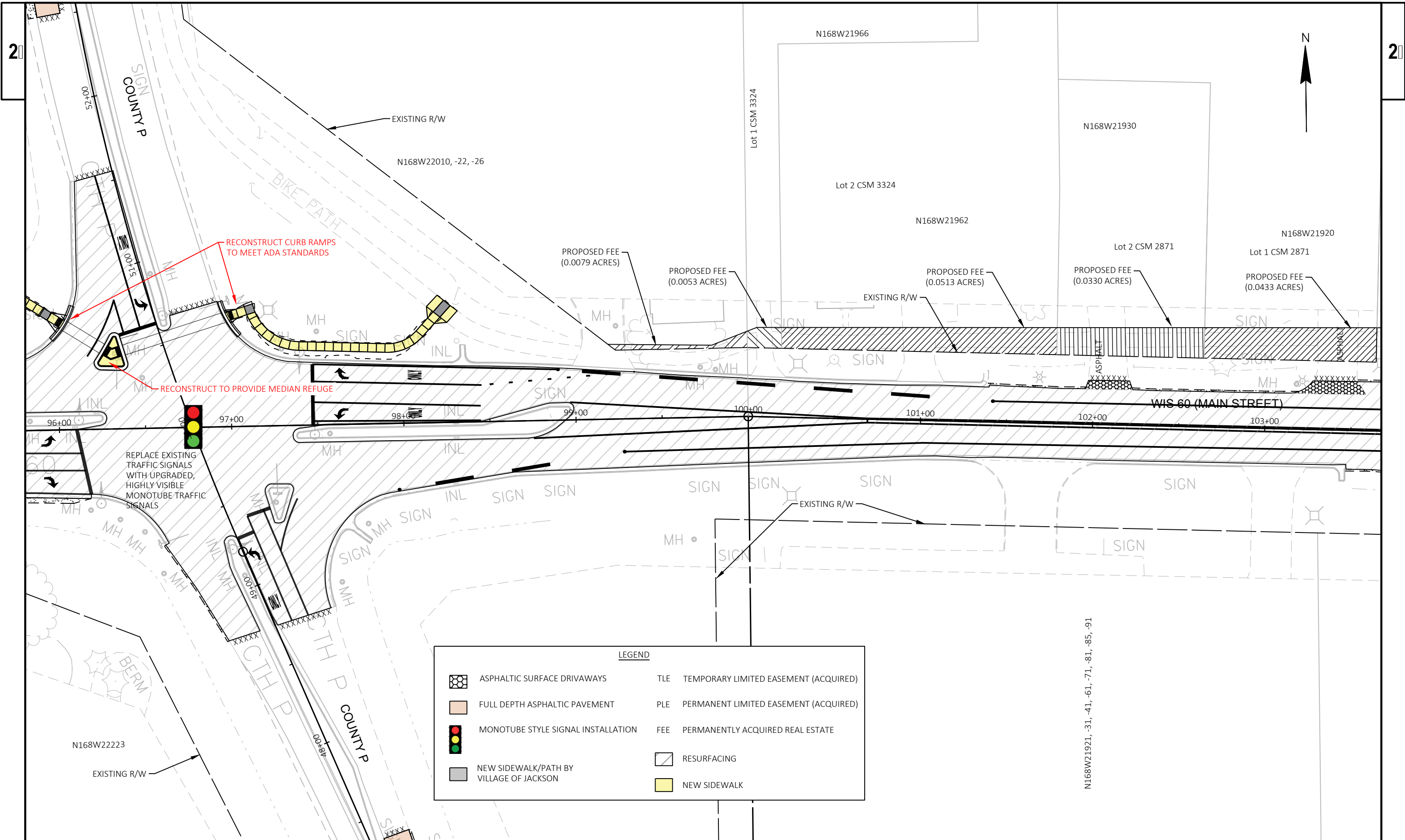
HWY: WIS 60 (MAIN STREET)

COUNTY: WASHINGTON

PLAN DETAIL

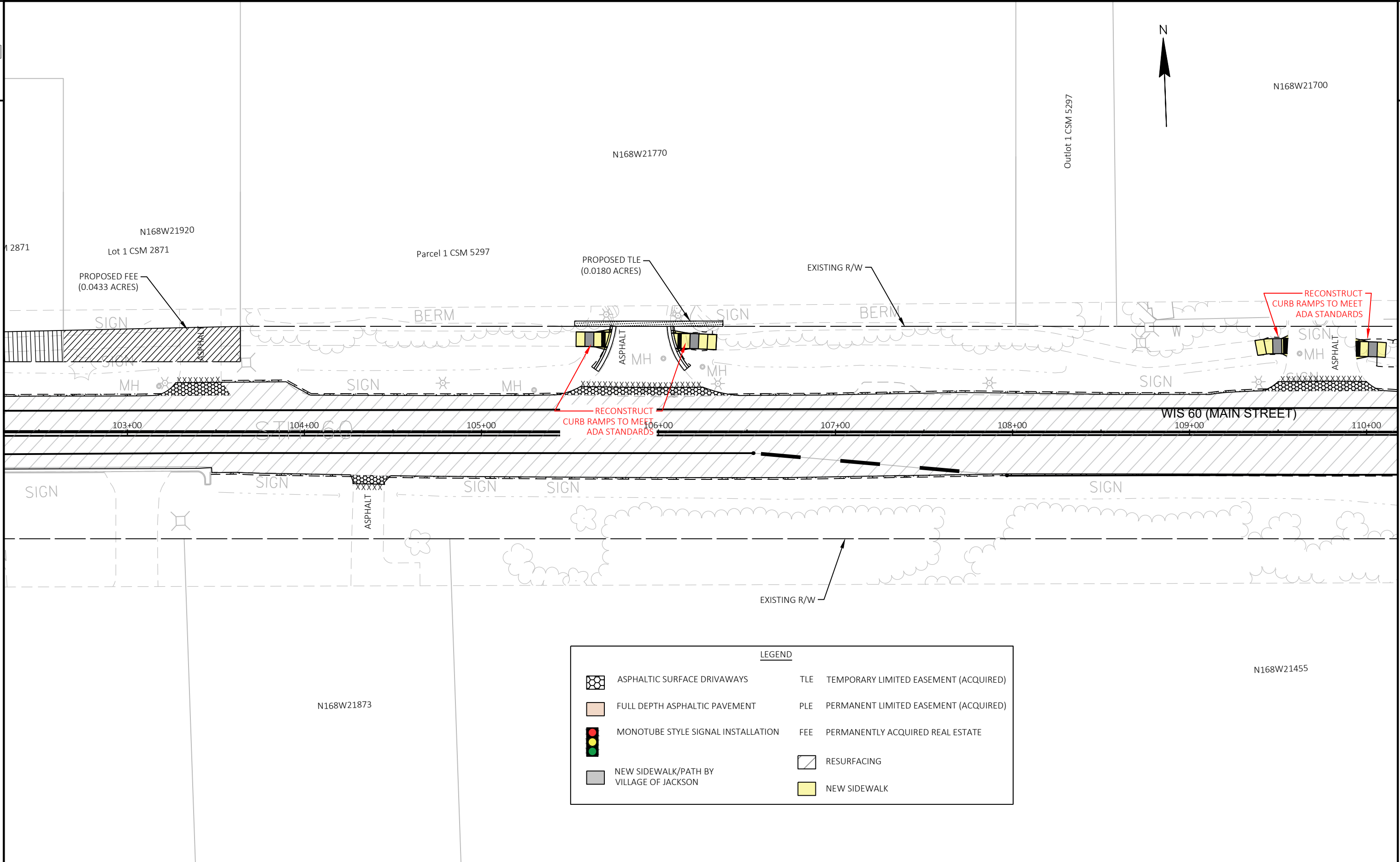
SHEET

E



LEGEND

	ASPHALTIC SURFACE DRIVEWAYS	TLE	TEMPORARY LIMITED EASEMENT (ACQUIRED)
	FULL DEPTH ASPHALTIC PAVEMENT	PLE	PERMANENT LIMITED EASEMENT (ACQUIRED)
	MONOTUBE STYLE SIGNAL INSTALLATION	FEE	PERMANENTLY ACQUIRED REAL ESTATE
	NEW SIDEWALK/PATH BY VILLAGE OF JACKSON		RESURFACING
			NEW SIDEWALK



LEGEND			
	ASPHALTIC SURFACE DRIVEWAYS		TLE TEMPORARY LIMITED EASEMENT (ACQUIRED)
	FULL DEPTH ASPHALTIC PAVEMENT		PLE PERMANENT LIMITED EASEMENT (ACQUIRED)
	MONOTUBE STYLE SIGNAL INSTALLATION		FEE PERMANENTLY ACQUIRED REAL ESTATE
	NEW SIDEWALK/PATH BY VILLAGE OF JACKSON		RESURFACING
			NEW SIDEWALK



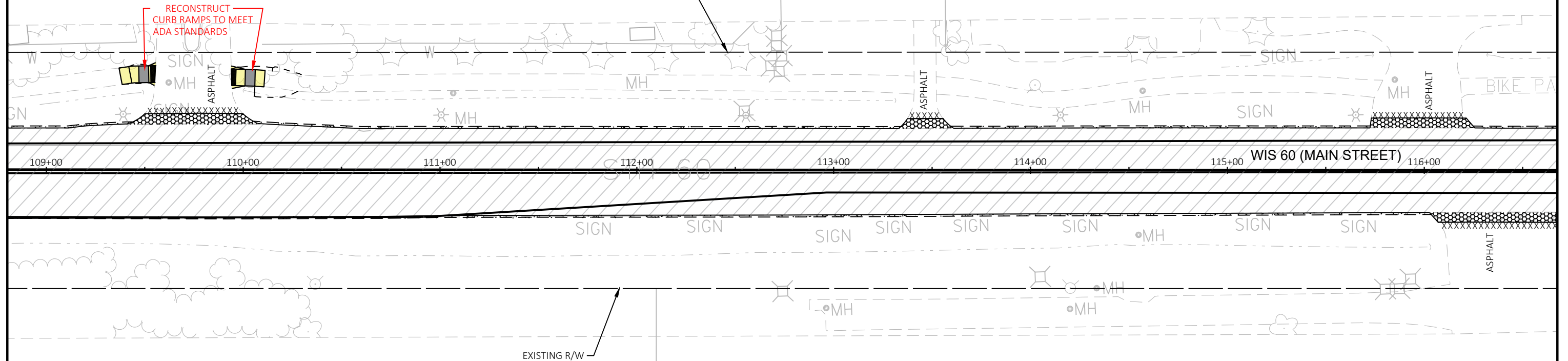
N168W21700

N168W21592

N168W21570, -80

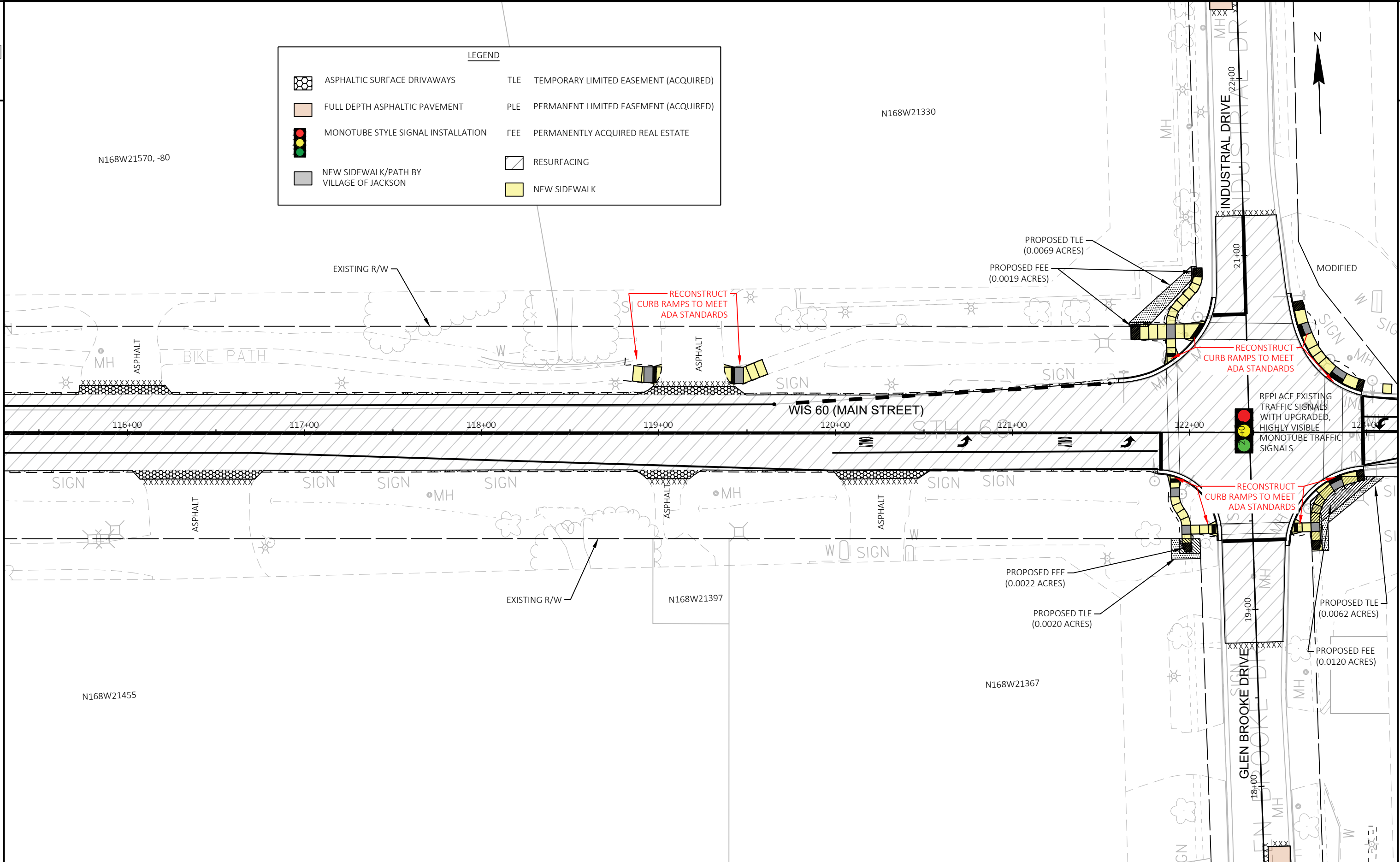
RECONSTRUCT CURB RAMP TO MEET ADA STANDARDS

EXISTING R/W

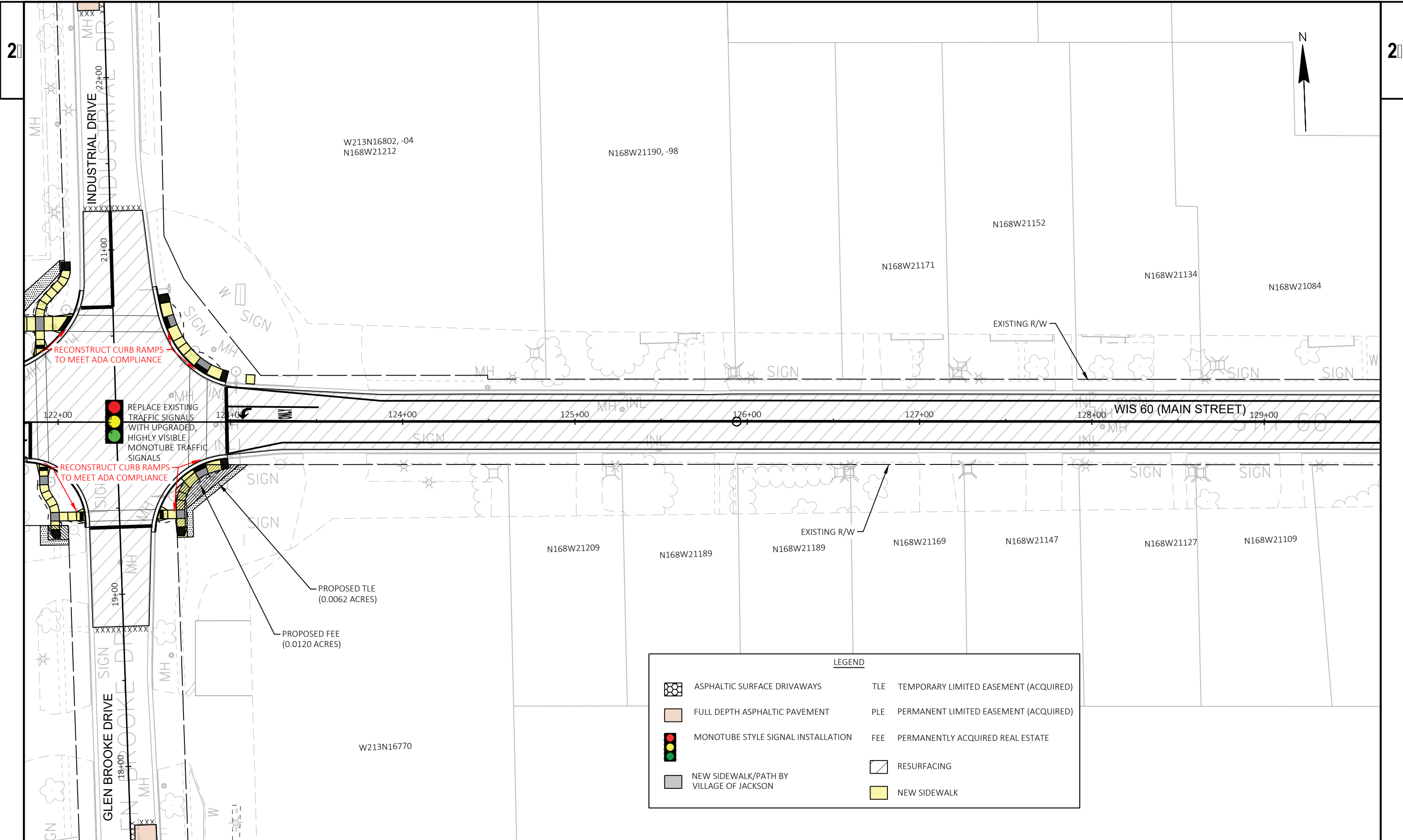


LEGEND			
	ASPHALTIC SURFACE DRIVEWAYS		TLE TEMPORARY LIMITED EASEMENT (ACQUIRED)
	FULL DEPTH ASPHALTIC PAVEMENT		PLE PERMANENT LIMITED EASEMENT (ACQUIRED)
	MONOTUBE STYLE SIGNAL INSTALLATION		FEE PERMANENTLY ACQUIRED REAL ESTATE
	NEW SIDEWALK/PATH BY VILLAGE OF JACKSON		RESURFACING
			NEW SIDEWALK

LEGEND			
	ASPHALTIC SURFACE DRIVEWAYS		TLE TEMPORARY LIMITED EASEMENT (ACQUIRED)
	FULL DEPTH ASPHALTIC PAVEMENT		PLE PERMANENT LIMITED EASEMENT (ACQUIRED)
	MONOTUBE STYLE SIGNAL INSTALLATION		FEE PERMANENTLY ACQUIRED REAL ESTATE
	NEW SIDEWALK/PATH BY VILLAGE OF JACKSON		RESURFACING
			NEW SIDEWALK



PROJECT NO: 2310-13-70	HWY: WIS 60 (MAIN STREET)	COUNTY: WASHINGTON	PLAN DETAIL	SHEET	E
------------------------	---------------------------	--------------------	-------------	-------	---



PROJECT NO: 2310-13-70

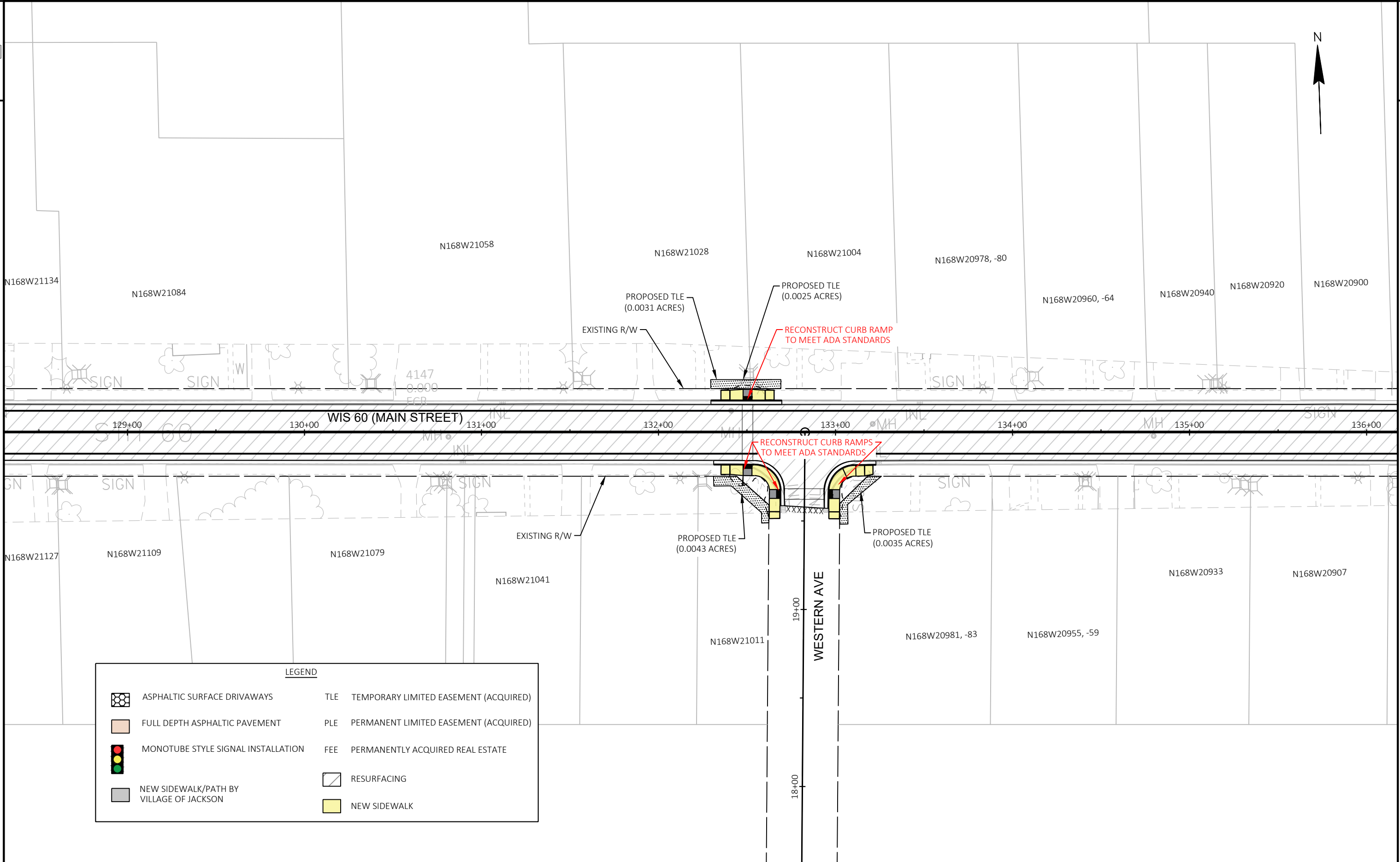
HWY: WIS 60 (MAIN STREET)

COUNTY: WASHINGTON

PLAN DETAIL

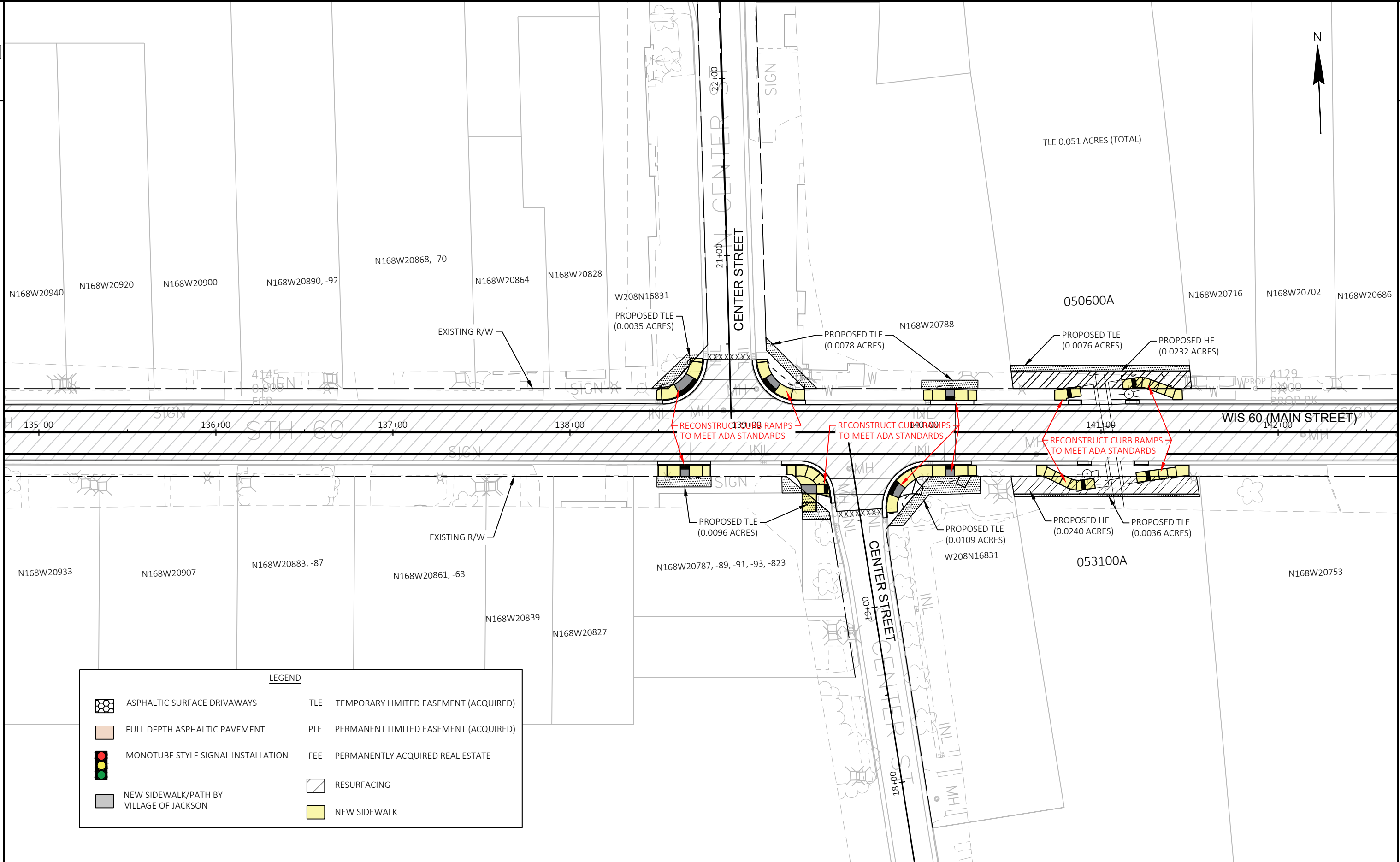
SHEET

E



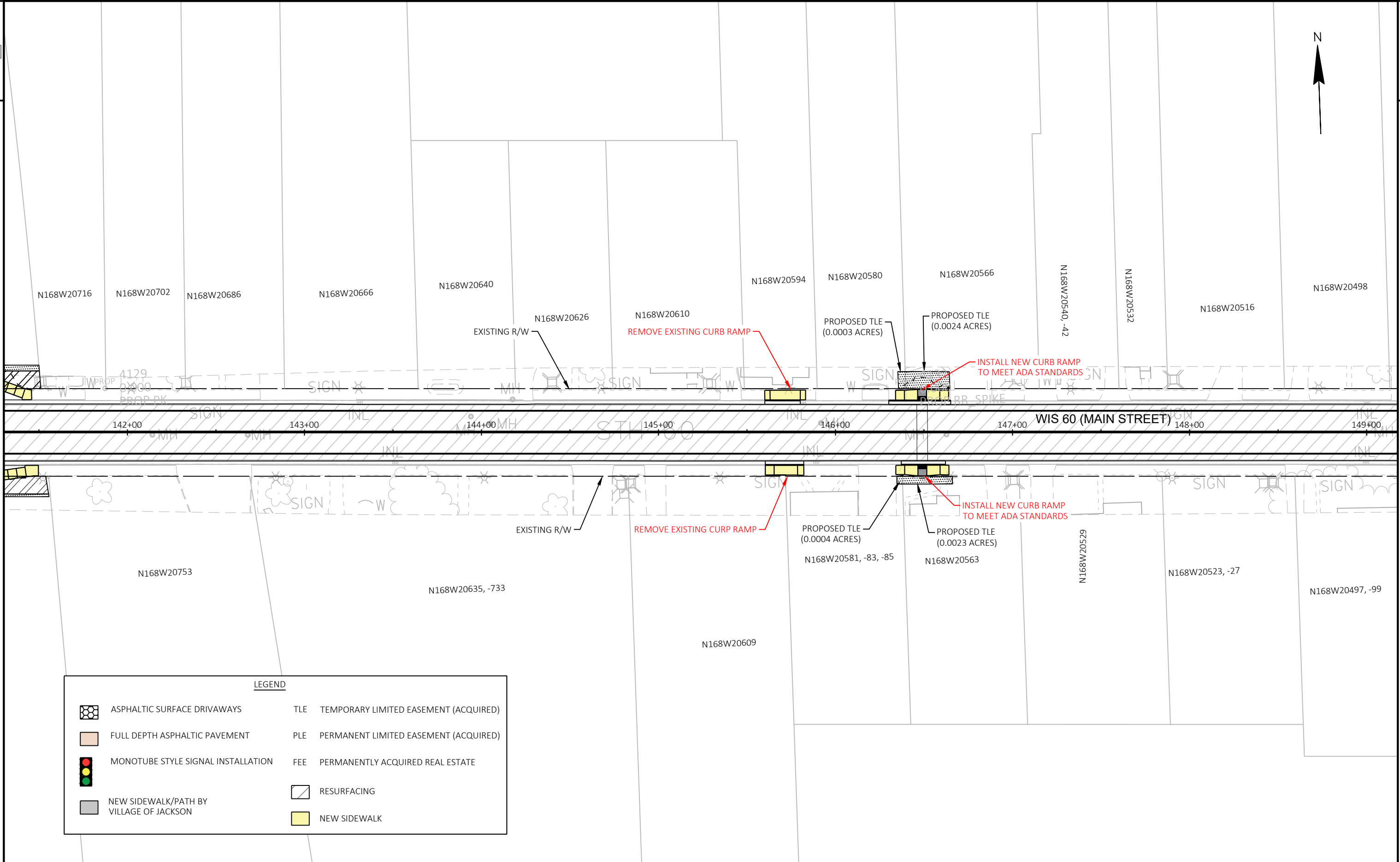
LEGEND

	ASPHALTIC SURFACE DRIVEWAYS	TLE	TEMPORARY LIMITED EASEMENT (ACQUIRED)
	FULL DEPTH ASPHALTIC PAVEMENT	PLE	PERMANENT LIMITED EASEMENT (ACQUIRED)
	MONOTUBE STYLE SIGNAL INSTALLATION	FEE	PERMANENTLY ACQUIRED REAL ESTATE
	NEW SIDEWALK/PATH BY VILLAGE OF JACKSON		RESURFACING
			NEW SIDEWALK



LEGEND

	ASPHALTIC SURFACE DRIVEWAYS		TLE TEMPORARY LIMITED EASEMENT (ACQUIRED)
	FULL DEPTH ASPHALTIC PAVEMENT		PLE PERMANENT LIMITED EASEMENT (ACQUIRED)
	MONOTUBE STYLE SIGNAL INSTALLATION		FEE PERMANENTLY ACQUIRED REAL ESTATE
	NEW SIDEWALK/PATH BY VILLAGE OF JACKSON		RESURFACING
			NEW SIDEWALK

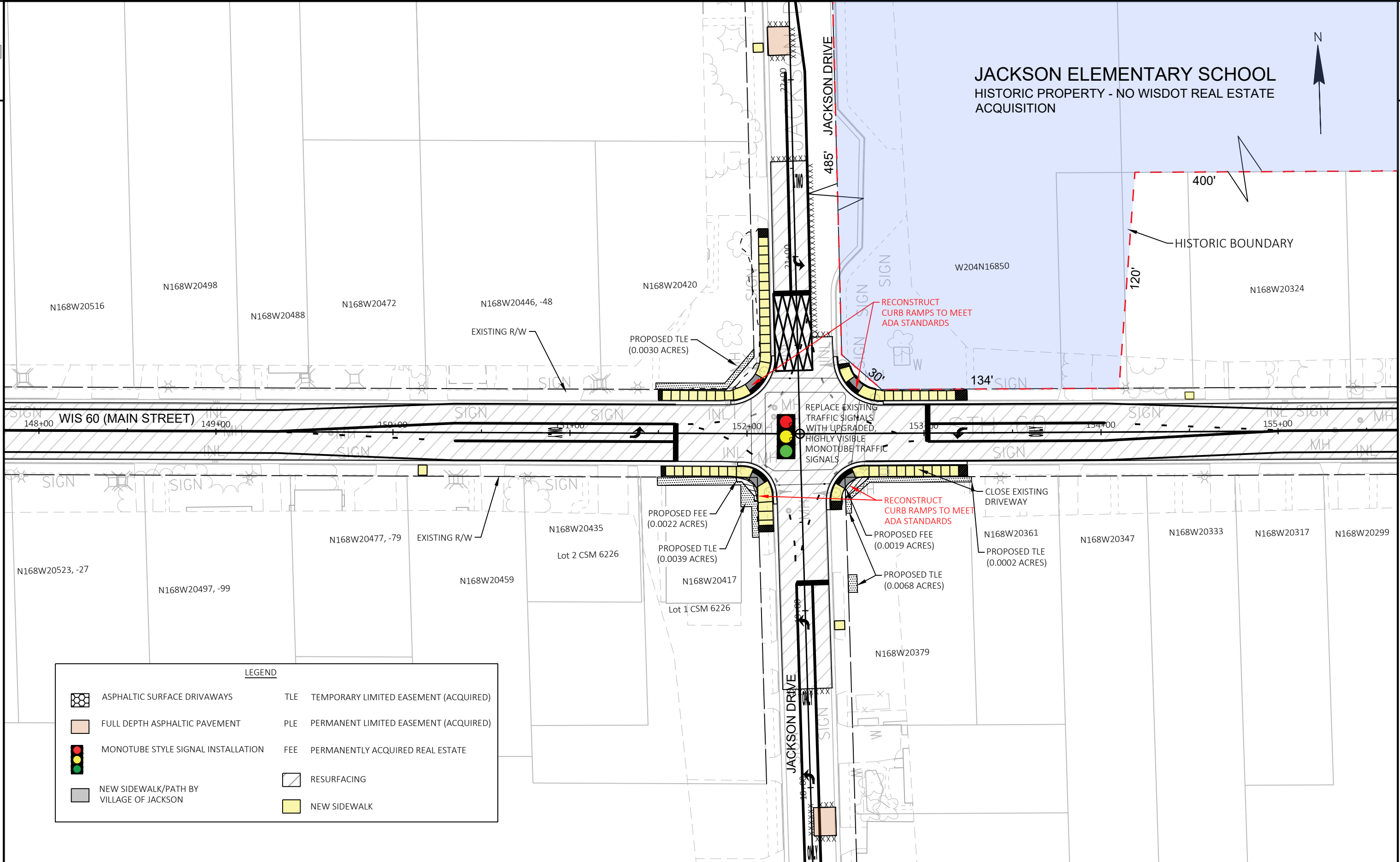


LEGEND

	ASPHALTIC SURFACE DRIVEWAYS		TLE TEMPORARY LIMITED EASEMENT (ACQUIRED)
	FULL DEPTH ASPHALTIC PAVEMENT		PLE PERMANENT LIMITED EASEMENT (ACQUIRED)
	MONOTUBE STYLE SIGNAL INSTALLATION		FEE PERMANENTLY ACQUIRED REAL ESTATE
	NEW SIDEWALK/PATH BY VILLAGE OF JACKSON		RESURFACING
			NEW SIDEWALK

JACKSON ELEMENTARY SCHOOL

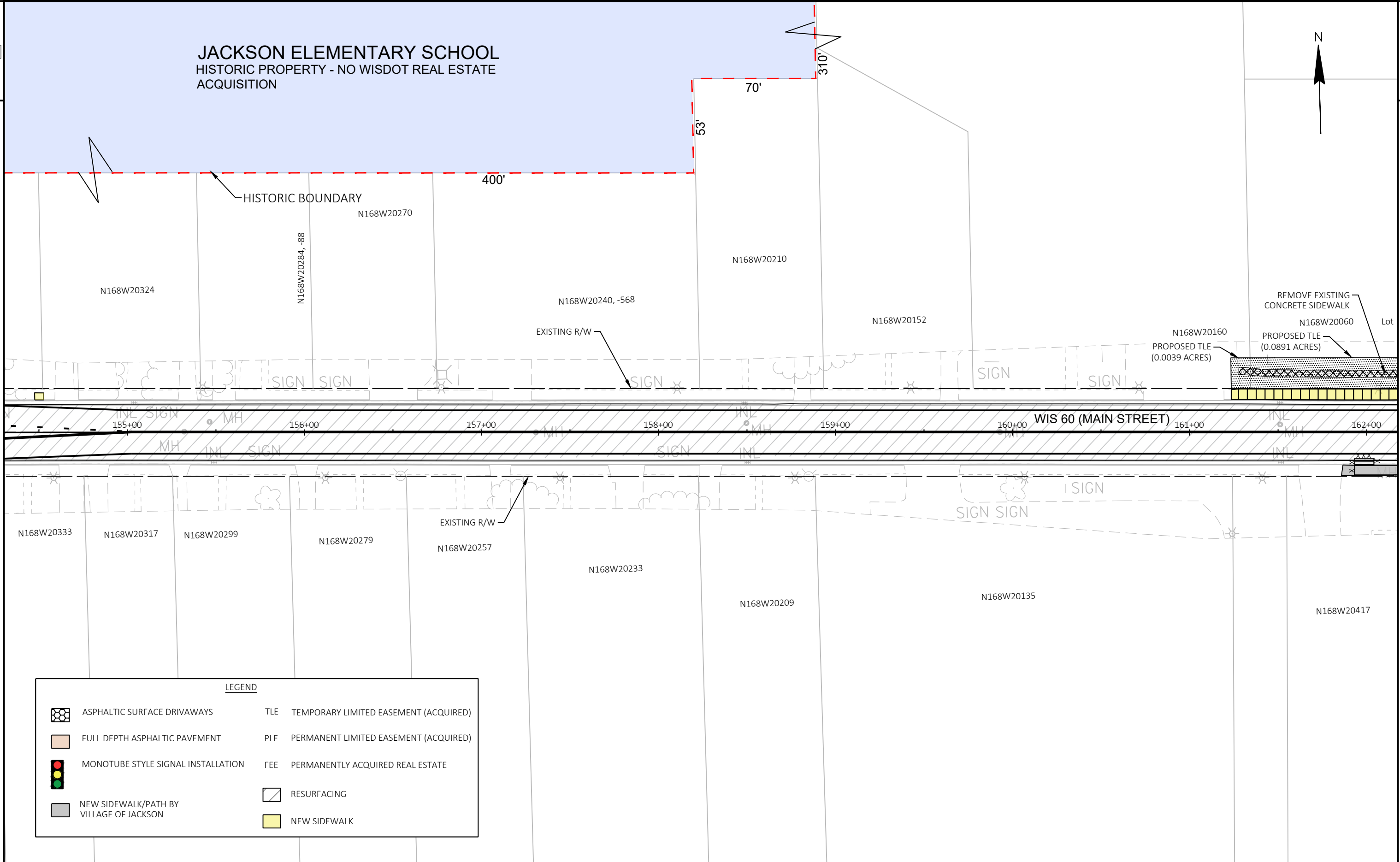
HISTORIC PROPERTY - NO WISDOT REAL ESTATE ACQUISITION



LEGEND

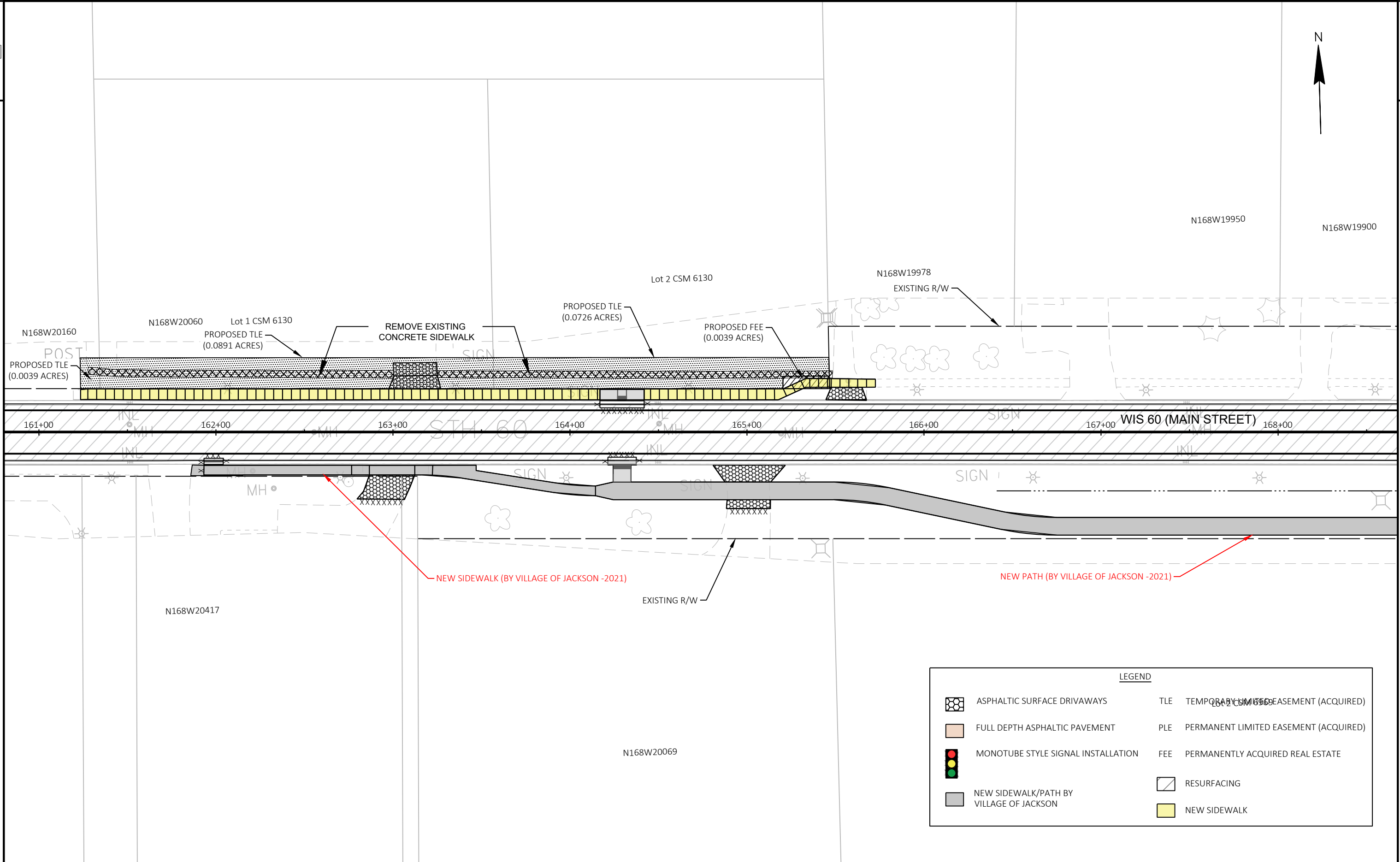
	ASPHALTIC SURFACE DRIVEWAYS	TLE	TEMPORARY LIMITED EASEMENT (ACQUIRED)
	FULL DEPTH ASPHALTIC PAVEMENT	PLE	PERMANENT LIMITED EASEMENT (ACQUIRED)
	MONOTUBE STYLE SIGNAL INSTALLATION	FEE	PERMANENTLY ACQUIRED REAL ESTATE
	NEW SIDEWALK/PATH BY VILLAGE OF JACKSON		RESURFACING
			NEW SIDEWALK

JACKSON ELEMENTARY SCHOOL HISTORIC PROPERTY - NO WISDOT REAL ESTATE ACQUISITION

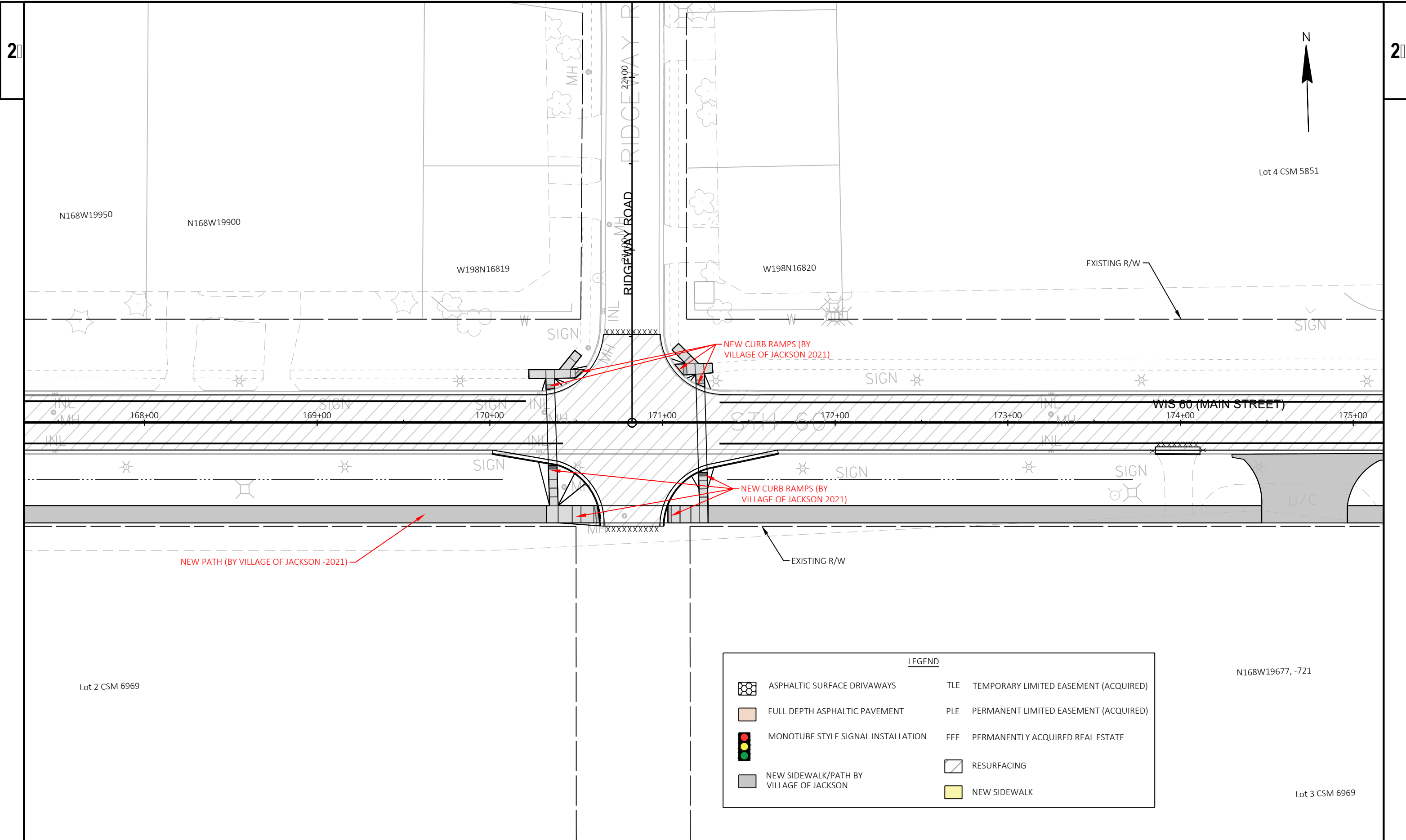


LEGEND

	ASPHALTIC SURFACE DRIVEWAYS	TLE	TEMPORARY LIMITED EASEMENT (ACQUIRED)
	FULL DEPTH ASPHALTIC PAVEMENT	PLE	PERMANENT LIMITED EASEMENT (ACQUIRED)
	MONOTUBE STYLE SIGNAL INSTALLATION	FEE	PERMANENTLY ACQUIRED REAL ESTATE
	NEW SIDEWALK/PATH BY VILLAGE OF JACKSON		RESURFACING
			NEW SIDEWALK



LEGEND	
	ASPHALTIC SURFACE DRIVEWAYS
	FULL DEPTH ASPHALTIC PAVEMENT
	MONOTUBE STYLE SIGNAL INSTALLATION
	NEW SIDEWALK/PATH BY VILLAGE OF JACKSON
	TLE TEMPORARY LIMITED EASEMENT (ACQUIRED)
	PLE PERMANENT LIMITED EASEMENT (ACQUIRED)
	FEE PERMANENTLY ACQUIRED REAL ESTATE
	RESURFACING
	NEW SIDEWALK



2

2



Lot 4 CSM 5851

Lot 5 CSM 5851

EXISTING R/W

REMOVE WATER DISCHARGE
OVER PATH WITH INSTALLATION
OF INLET

SIGN

SIGN

SIGN

174+00

175+00

176+00

177+00

178+00

179+00

180+00

181+00

WIS 60 (MAIN STREET)

STH 60

U/C

MH

ASPHALT

NEW PATH (BY VILLAGE OF JACKSON - 2021)

EXISTING R/W

N168W19677, -721

N168W19555

Lot 3 CSM 6969

LEGEND

	ASPHALTIC SURFACE DRIVEWAYS	TLE	TEMPORARY LIMITED EASEMENT (ACQUIRED)
	FULL DEPTH ASPHALTIC PAVEMENT	PLE	PERMANENT LIMITED EASEMENT (ACQUIRED)
	MONOTUBE STYLE SIGNAL INSTALLATION	FEE	PERMANENTLY ACQUIRED REAL ESTATE
	NEW SIDEWALK/PATH BY VILLAGE OF JACKSON		RESURFACING
			NEW SIDEWALK

