

PROJECT NO: 1060-53-70	HWY: IH 43	COUNTY: MILWAUKEE	PROJECT OVERVIEW: N-40-008/033/040/041/042/043/046/047	SHEET	E
------------------------	------------	-------------------	--	-------	----------

CITY OF OAK CREEK

CITY OF MILWAUKEE



IH 41/ IH 94

N-40-006: Spot painting of rusty areas on steel posts

N-40-046: Spot rust removal and painting of angle bracket attachments. Steel angle support installations at various locations.

IH 41/ IH 94

N-40-047: Spot painting of rusty areas and one shifted panel at structure mounted portion of wall

W RAWSON AVE

W COLLEGE AVE

STH 119

CITY OF OAK CREEK

CITY OF MILWAUKEE



CITY OF WEST ALLIS

CITY OF WEST ALLIS

S 108TH ST

IH 41

N-40-017: Fix concrete spalling and possibly replace three posts due to spalling. Repaint mounting brackets on structure-mounted portion. Install steel angles to fully support bottom of cracked panels on structure mounted portion.

IH 41

W HOWARD AVE

W BELOIT AVE

W OKLAHOMA AVE

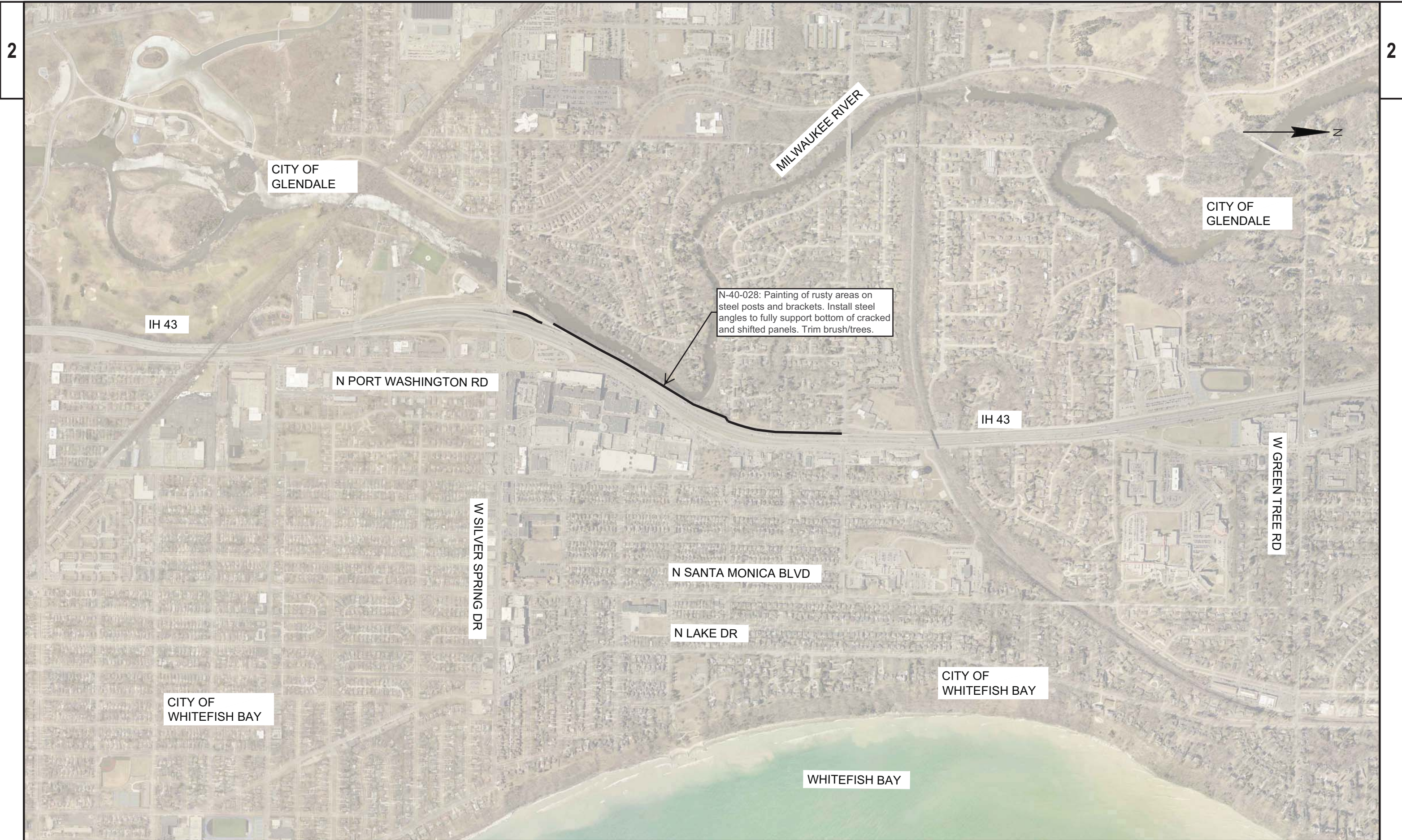
W NATIONAL AVE

W LINCOLN AVE

S 92ND ST

CITY OF WEST ALLIS

CITY OF WEST ALLIS



2

2

CITY OF GLENDALE

CITY OF GLENDALE

IH 43

N PORT WASHINGTON RD

IH 43

W GREEN TREE RD

W SILVER SPRING DR

N SANTA MONICA BLVD

N LAKE DR

CITY OF WHITEFISH BAY

CITY OF WHITEFISH BAY

WHITEFISH BAY

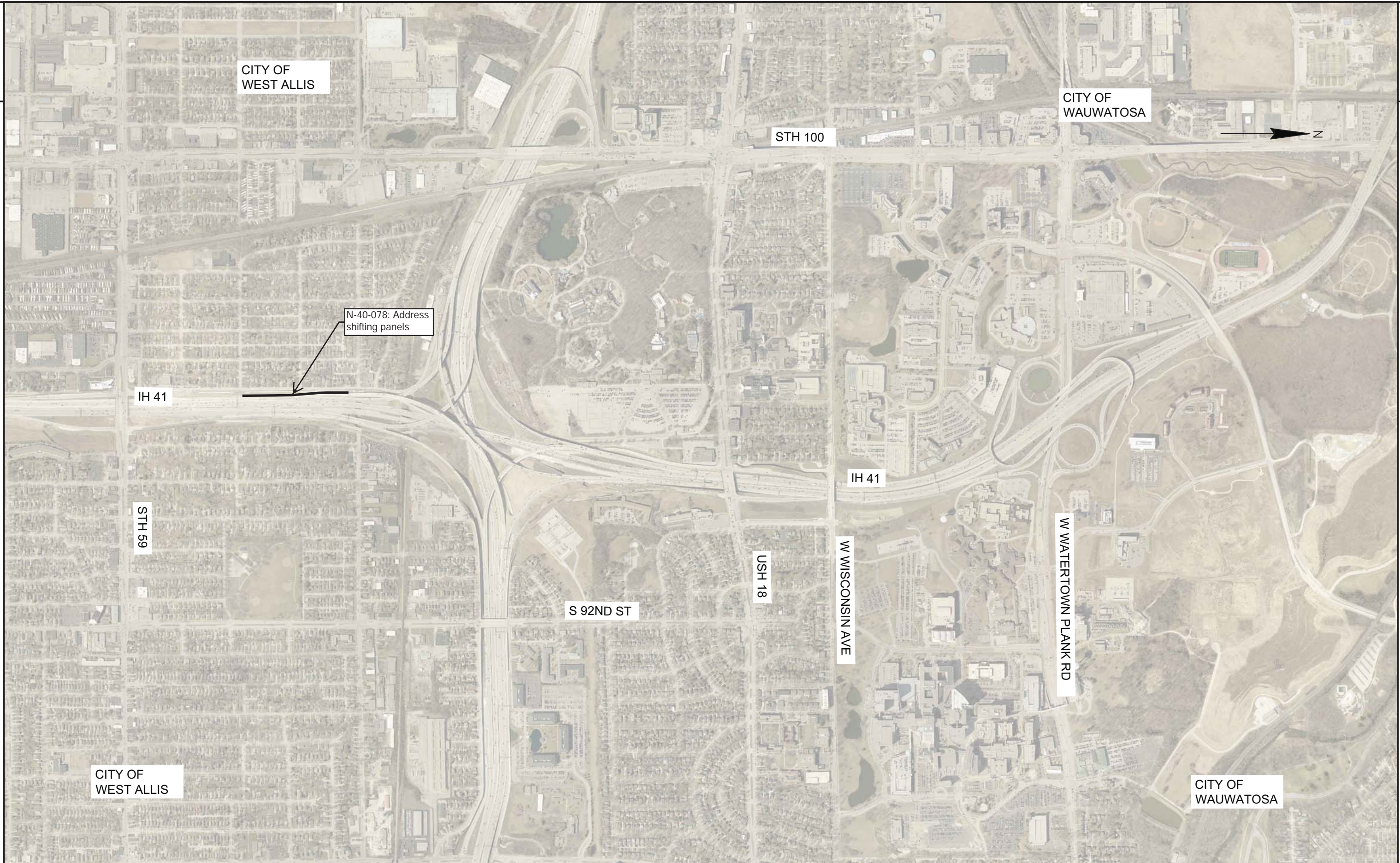
N-40-028: Painting of rusty areas on steel posts and brackets. Install steel angles to fully support bottom of cracked and shifted panels. Trim brush/trees.





N-40-034: Spot painting of rusty areas on steel posts and brackets. Replace or add angle brackets to fully support between posts to address cracked/displaced/shifted panels. Apply protective coating on panels that experience freeze/thaw deterioration adjacent to highway. Trim brush on both sides of wall.

PROJECT NO: 1060-53-70	HWY: IH 41	COUNTY: MILWAUKEE	PROJECT OVERVIEW - N-40-034	SHEET	E
------------------------	------------	-------------------	-----------------------------	-------	---



CITY OF WEST ALLIS

CITY OF WAUWATOSA

STH 100



N-40-078: Address shifting panels

IH 41

STH 59

IH 41

S 92ND ST

USH 18

W WISCONSIN AVE

W WATERTOWN PLANK RD

CITY OF WEST ALLIS

CITY OF WAUWATOSA

