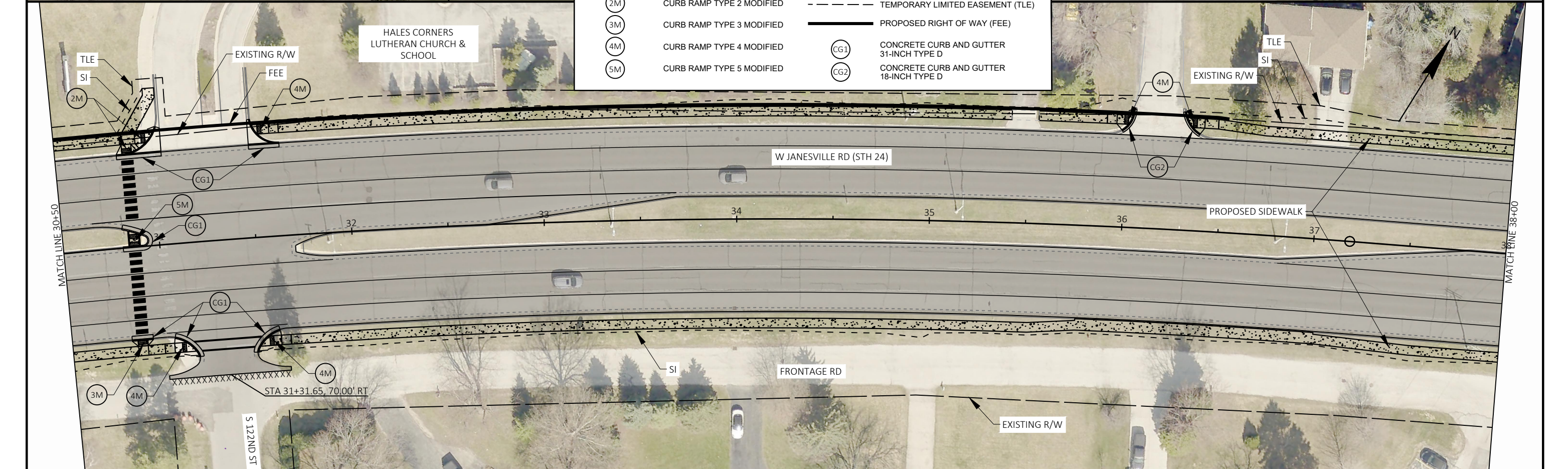
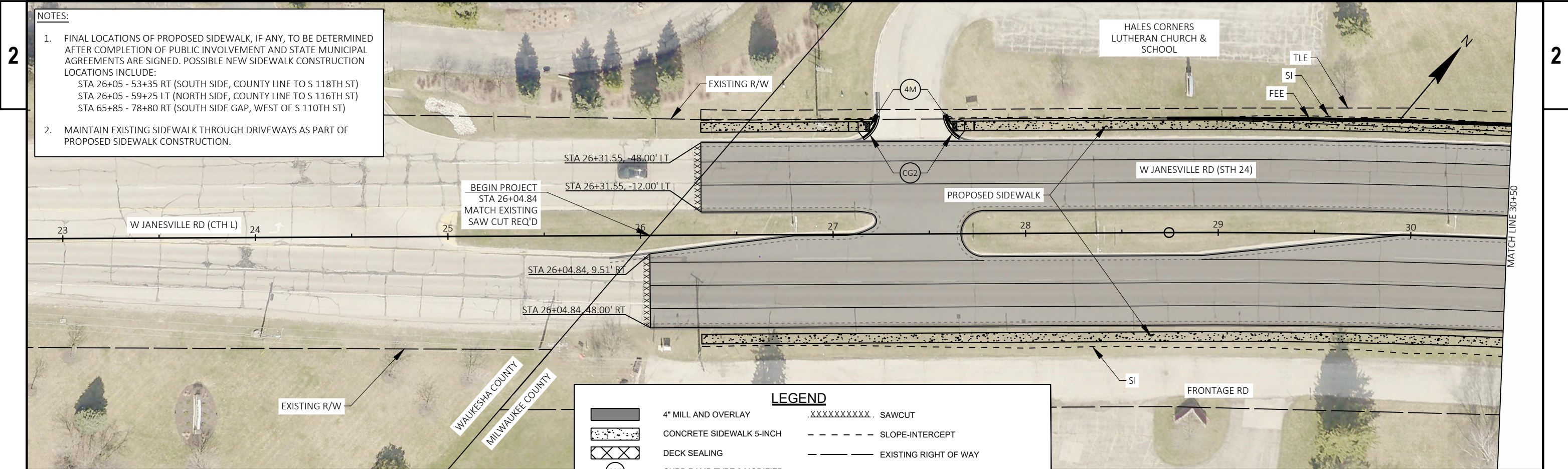


**NOTES:**

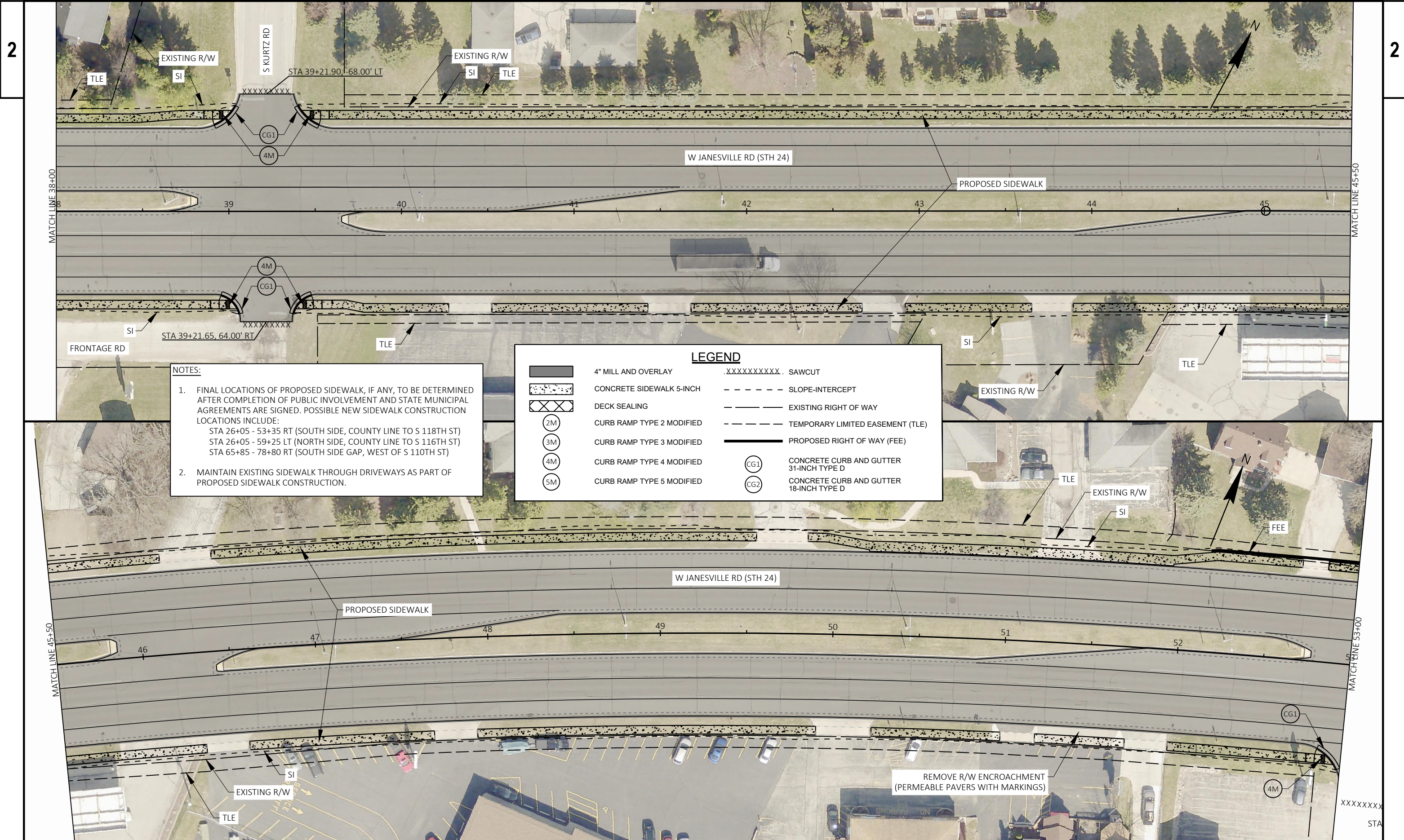
- FINAL LOCATIONS OF PROPOSED SIDEWALK, IF ANY, TO BE DETERMINED AFTER COMPLETION OF PUBLIC INVOLVEMENT AND STATE MUNICIPAL AGREEMENTS ARE SIGNED. POSSIBLE NEW SIDEWALK CONSTRUCTION LOCATIONS INCLUDE:  
 STA 26+05 - 53+35 RT (SOUTH SIDE, COUNTY LINE TO S 118TH ST)  
 STA 26+05 - 59+25 LT (NORTH SIDE, COUNTY LINE TO S 116TH ST)  
 STA 65+85 - 78+80 RT (SOUTH SIDE GAP, WEST OF S 110TH ST)
- MAINTAIN EXISTING SIDEWALK THROUGH DRIVEWAYS AS PART OF PROPOSED SIDEWALK CONSTRUCTION.



**LEGEND**

	4" MILL AND OVERLAY		SAWCUT
	CONCRETE SIDEWALK 5-INCH		SLOPE-INTERCEPT
	DECK SEALING		EXISTING RIGHT OF WAY
	CURB RAMP TYPE 2 MODIFIED		TEMPORARY LIMITED EASEMENT (TLE)
	CURB RAMP TYPE 3 MODIFIED		PROPOSED RIGHT OF WAY (FEE)
	CURB RAMP TYPE 4 MODIFIED		CONCRETE CURB AND GUTTER 31-INCH TYPE D
	CURB RAMP TYPE 5 MODIFIED		CONCRETE CURB AND GUTTER 18-INCH TYPE D



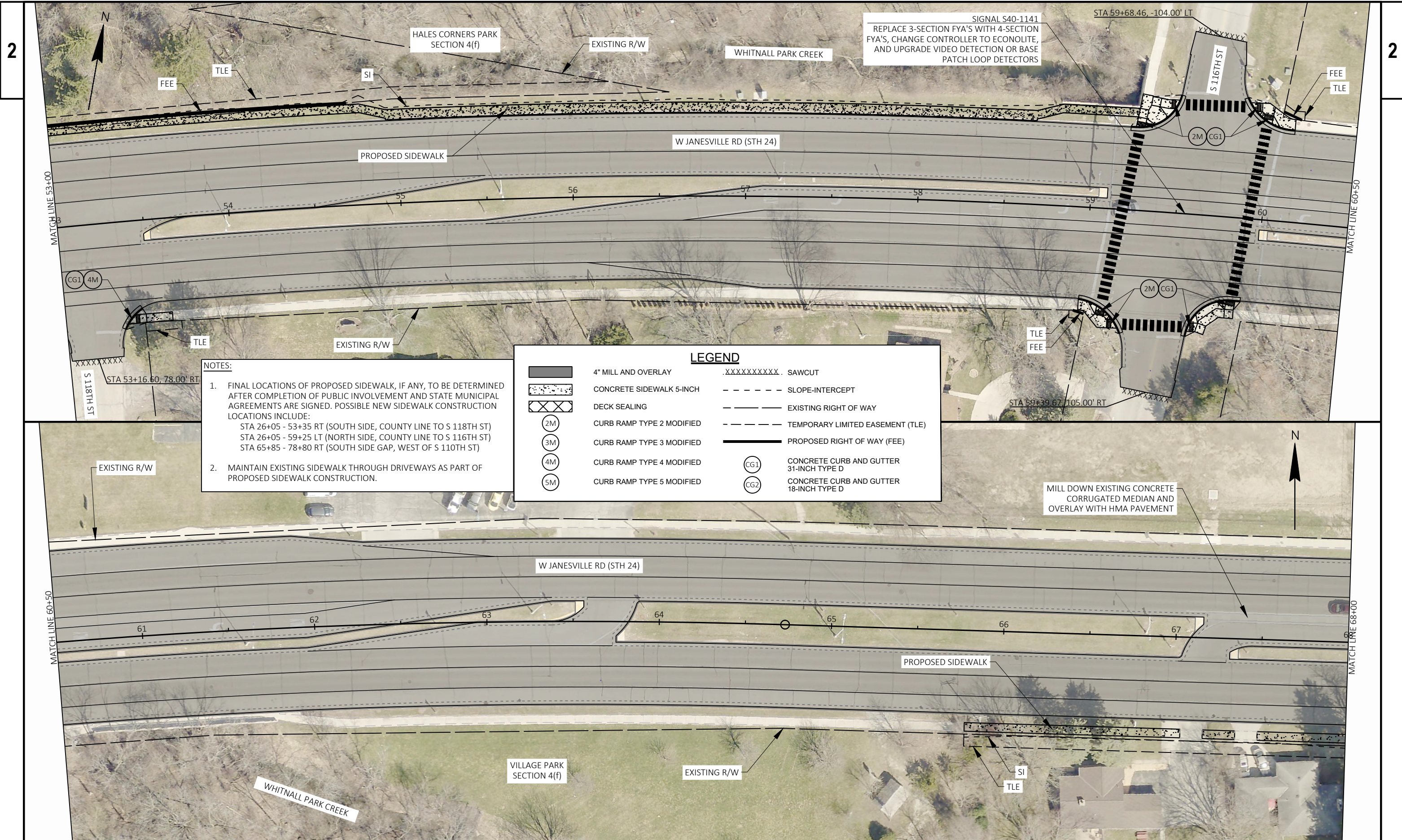


**NOTES:**

- FINAL LOCATIONS OF PROPOSED SIDEWALK, IF ANY, TO BE DETERMINED AFTER COMPLETION OF PUBLIC INVOLVEMENT AND STATE MUNICIPAL AGREEMENTS ARE SIGNED. POSSIBLE NEW SIDEWALK CONSTRUCTION LOCATIONS INCLUDE:  
 STA 26+05 - 53+35 RT (SOUTH SIDE, COUNTY LINE TO S 118TH ST)  
 STA 26+05 - 59+25 LT (NORTH SIDE, COUNTY LINE TO S 116TH ST)  
 STA 65+85 - 78+80 RT (SOUTH SIDE GAP, WEST OF S 110TH ST)
- MAINTAIN EXISTING SIDEWALK THROUGH DRIVEWAYS AS PART OF PROPOSED SIDEWALK CONSTRUCTION.

LEGEND			
	4" MILL AND OVERLAY		SAWCUT
	CONCRETE SIDEWALK 5-INCH		SLOPE-INTERCEPT
	DECK SEALING		EXISTING RIGHT OF WAY
	CURB RAMP TYPE 2 MODIFIED		TEMPORARY LIMITED EASEMENT (TLE)
	CURB RAMP TYPE 3 MODIFIED		PROPOSED RIGHT OF WAY (FEE)
	CURB RAMP TYPE 4 MODIFIED		CONCRETE CURB AND GUTTER 31-INCH TYPE D
	CURB RAMP TYPE 5 MODIFIED		CONCRETE CURB AND GUTTER 18-INCH TYPE D



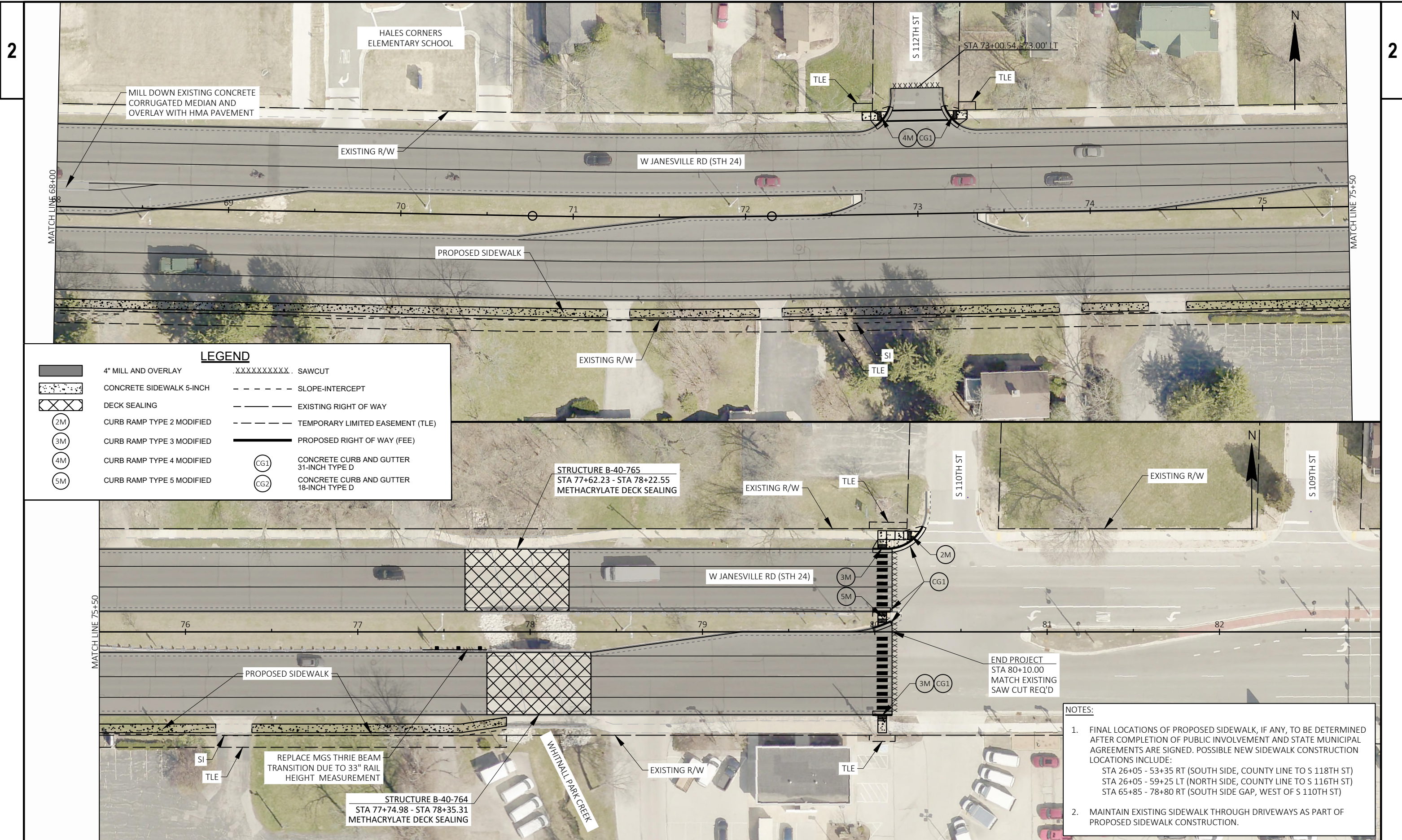


**NOTES:**

- FINAL LOCATIONS OF PROPOSED SIDEWALK, IF ANY, TO BE DETERMINED AFTER COMPLETION OF PUBLIC INVOLVEMENT AND STATE MUNICIPAL AGREEMENTS ARE SIGNED. POSSIBLE NEW SIDEWALK CONSTRUCTION LOCATIONS INCLUDE:  
 STA 26+05 - 53+35 RT (SOUTH SIDE, COUNTY LINE TO S 118TH ST)  
 STA 26+05 - 59+25 LT (NORTH SIDE, COUNTY LINE TO S 116TH ST)  
 STA 65+85 - 78+80 RT (SOUTH SIDE GAP, WEST OF S 110TH ST)
- MAINTAIN EXISTING SIDEWALK THROUGH DRIVEWAYS AS PART OF PROPOSED SIDEWALK CONSTRUCTION.

LEGEND			
	4" MILL AND OVERLAY		SAWCUT
	CONCRETE SIDEWALK 5-INCH		SLOPE-INTERCEPT
	DECK SEALING		EXISTING RIGHT OF WAY
	CURB RAMP TYPE 2 MODIFIED		TEMPORARY LIMITED EASEMENT (TLE)
	CURB RAMP TYPE 3 MODIFIED		PROPOSED RIGHT OF WAY (FEE)
	CURB RAMP TYPE 4 MODIFIED		CONCRETE CURB AND GUTTER 31-INCH TYPE D
	CURB RAMP TYPE 5 MODIFIED		CONCRETE CURB AND GUTTER 18-INCH TYPE D





**LEGEND**

	4" MILL AND OVERLAY		SAWCUT
	CONCRETE SIDEWALK 5-INCH		SLOPE-INTERCEPT
	DECK SEALING		EXISTING RIGHT OF WAY
	CURB RAMP TYPE 2 MODIFIED		TEMPORARY LIMITED EASEMENT (TLE)
	CURB RAMP TYPE 3 MODIFIED		PROPOSED RIGHT OF WAY (FEE)
	CURB RAMP TYPE 4 MODIFIED		CONCRETE CURB AND GUTTER 31-INCH TYPE D
	CURB RAMP TYPE 5 MODIFIED		CONCRETE CURB AND GUTTER 18-INCH TYPE D

- NOTES:**
- FINAL LOCATIONS OF PROPOSED SIDEWALK, IF ANY, TO BE DETERMINED AFTER COMPLETION OF PUBLIC INVOLVEMENT AND STATE MUNICIPAL AGREEMENTS ARE SIGNED. POSSIBLE NEW SIDEWALK CONSTRUCTION LOCATIONS INCLUDE:  
 STA 26+05 - 53+35 RT (SOUTH SIDE, COUNTY LINE TO S 118TH ST)  
 STA 26+05 - 59+25 LT (NORTH SIDE, COUNTY LINE TO S 116TH ST)  
 STA 65+85 - 78+80 RT (SOUTH SIDE GAP, WEST OF S 110TH ST)
  - MAINTAIN EXISTING SIDEWALK THROUGH DRIVEWAYS AS PART OF PROPOSED SIDEWALK CONSTRUCTION.