



US 12/18 Freeway Conversion Study



**I-39/90 - County N
Dane County**

**Public Information Meeting #2
April 24, 2013**



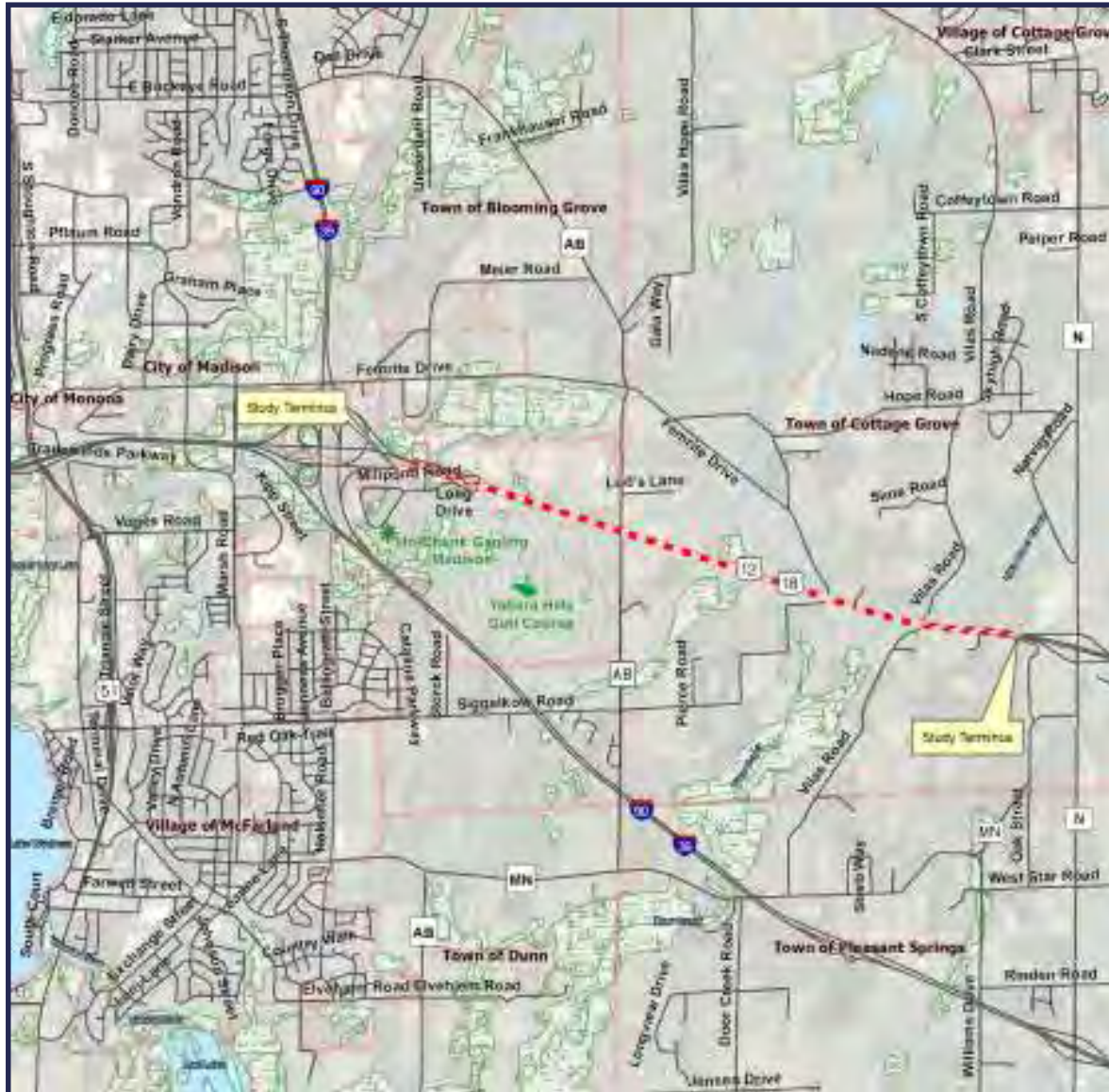
Purpose of Meeting



- **Provide data gathering summary**
- **Discuss alternative development**
 - Meier Road overpass
 - US 12/18 mainline west segment
 - US 12/18 mainline east segment
- **Discuss study schedule**
- **Gather input from local residents and businesses**



Corridor Overview





Study Phases



- **Data Gathering**
- **Develop alternatives and identify impacts**
- **Environmental Assessment**
- **Develop 30% plans for the preferred alternative**
 - **Preserve the US 12/18 corridor**
 - **No US 12/18 construction planned at this time**
 - **Intersection improvements may be made**



Data Gathering Summary



- Existing traffic volumes (2009 counts)
 - I-39/90 to County AB – 18,000
 - County AB to County N – 14,200

- Forecast traffic volumes (2040)
 - I-39/90 to County AB – 41,000
 - County AB to County N – 21,400



Data Gathering Summary



- **Mainline crash data (2007 – 2011)**

Segment	Total Crashes	Segment Crash Rate*	Injury Crash Rate*	Fatal Crash Rate*
I-39/90 to County AB	55	220	89	7.7
County AB to County N	30	47	16	0.0
Statewide averages	-	67	23.8	0.9

*Per hundred million vehicle miles traveled.



Data Gathering Summary



- Intersection crash data (2007 – 2011)

Intersection	Total Crashes	Intersection Crash Rate*	Injury Crash Rate*	Fatal Crash Rate*
Millpond Rd./Long Drive	30	1.04	0.42	0.07
County AB	18	0.55	0.31	0.00
Siggelkow Rd./Femrite Dr.	1	0.04	0.04	0.00
Vilas Road	6	0.23	0.11	0.00
County N (EB ramps)	5	0.37	0.15	0.00
County N (WB ramps)	4	0.38	0.19	0.00
Statewide averages	-	0.94	0.41	0.01
*Per million entering vehicles.				



Data Gathering Summary



- **Environmental constraints**
 - **Wetlands and waterways**
 - **Archaeological/historic sites**
 - **Publicly owned lands (parkland, golf course)**
 - **Hazardous materials sites**



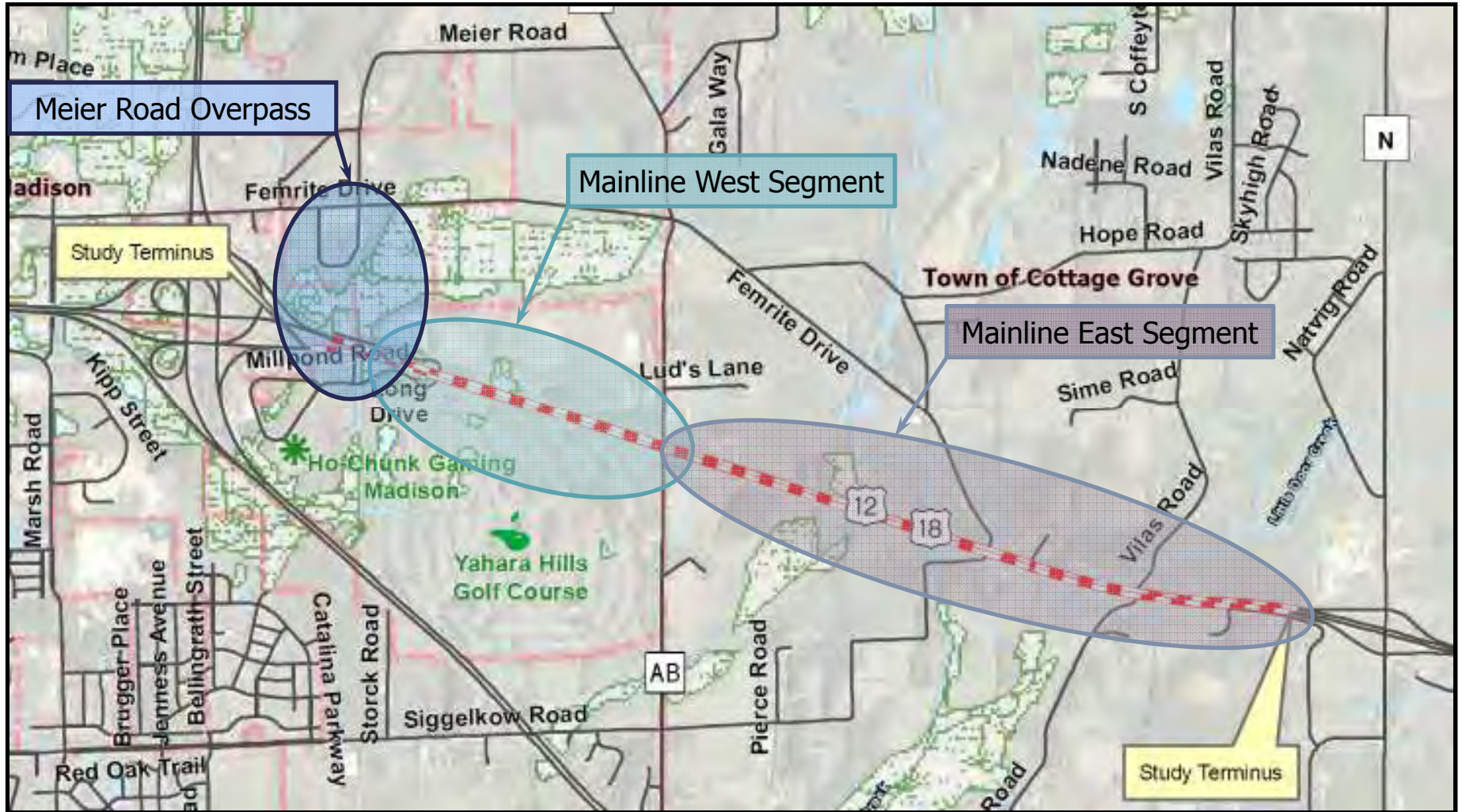
Data Gathering Summary



- **Public input**
 - **Intersection safety concerns**
 - **Access concerns with freeway conversion**
 - **Impact to farmland and access to fields**
 - **Less congestion/fewer crashes east of County AB**



Alternative Development





Potential Interim Improvements



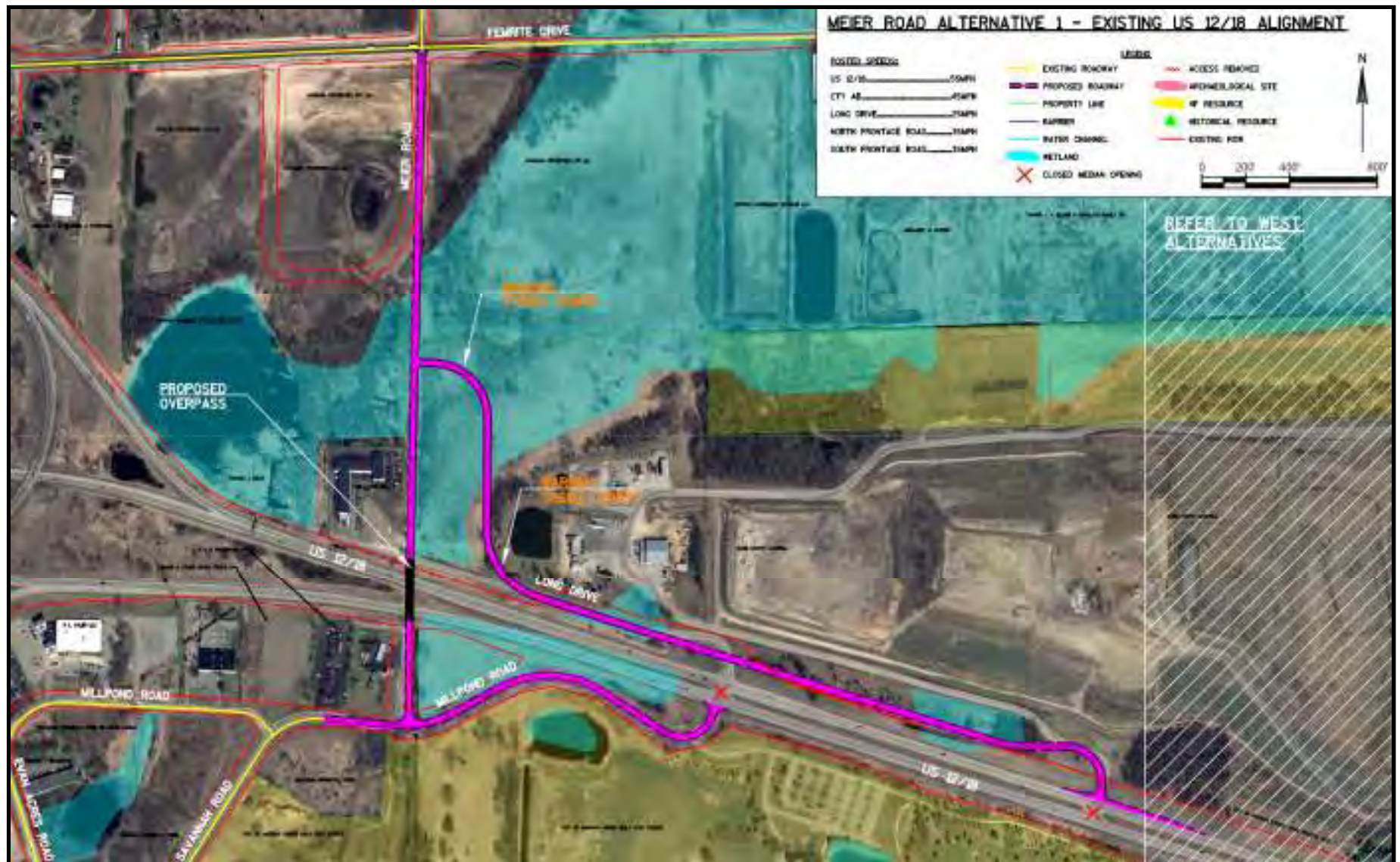
- **Millpond Road**
 - **Offset eastbound right turn lane (2014)**
 - **Widen Millpond Road at intersection**

- **US 12/18 Mainline**
 - **Correct substandard vertical curves**

- **Intersections**
 - **Extend right turn lanes**
 - **Add street lighting**

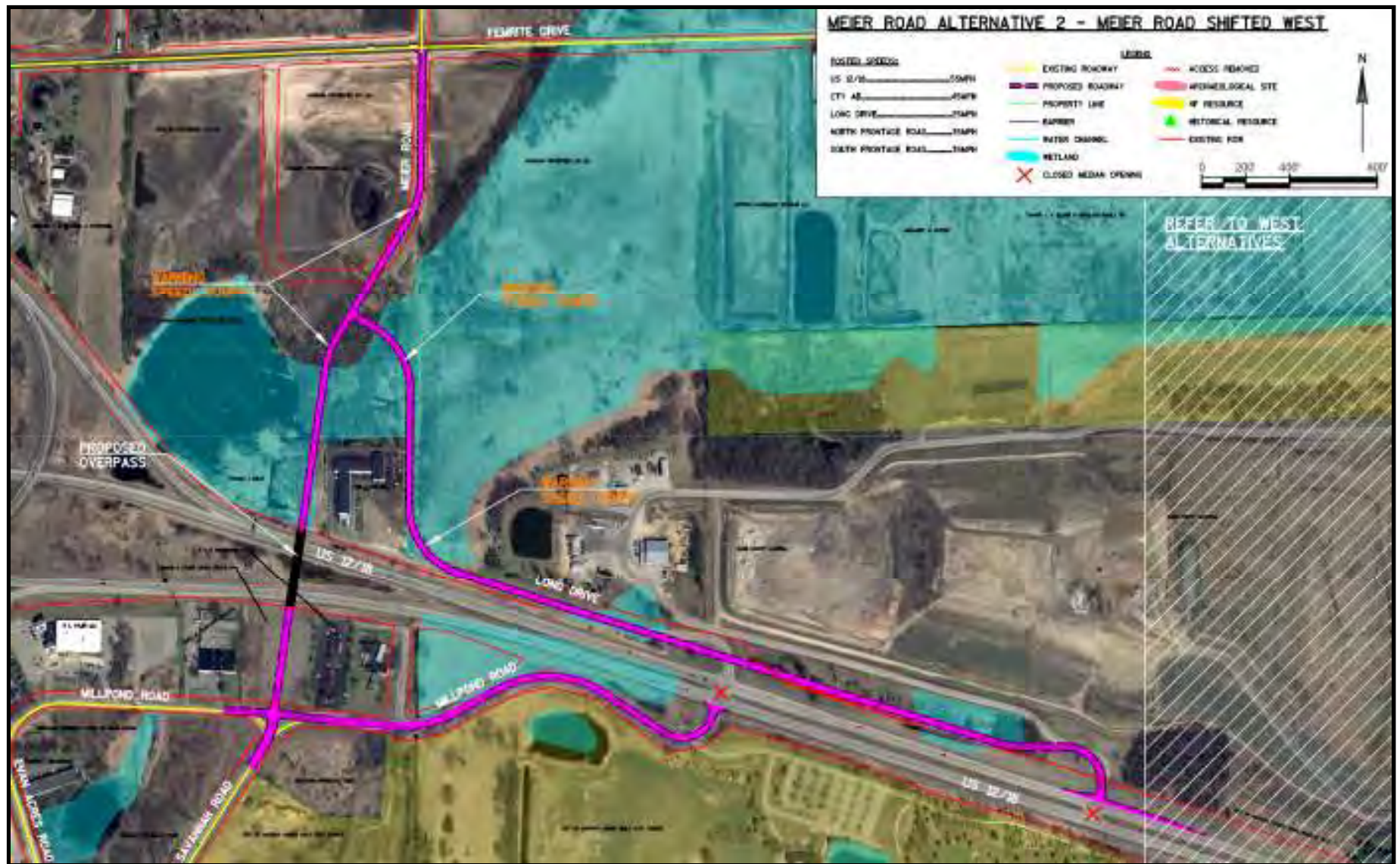


Meier Road Overpass





Meier Road Overpass



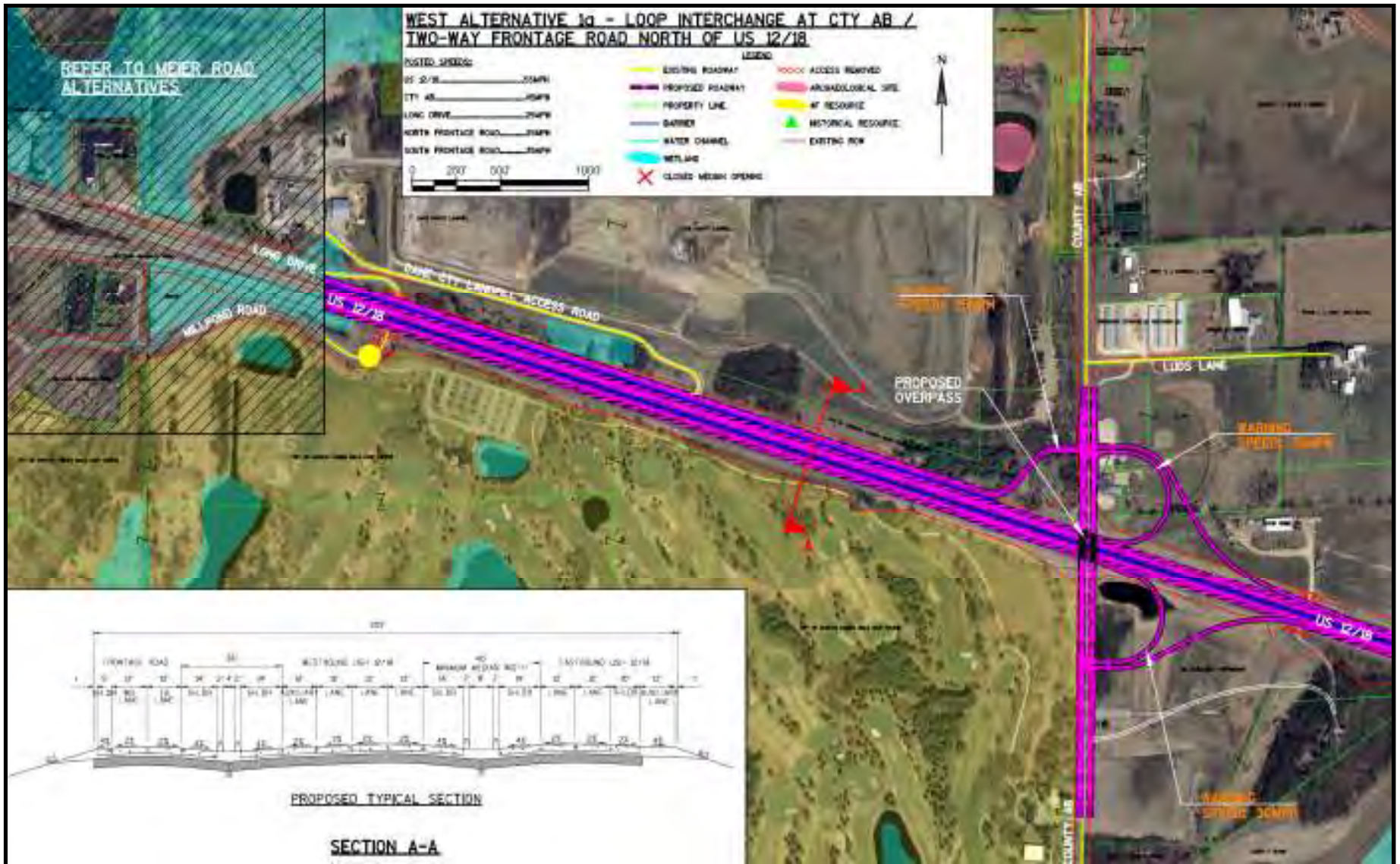


US 12/18 Mainline West Segment - Overview



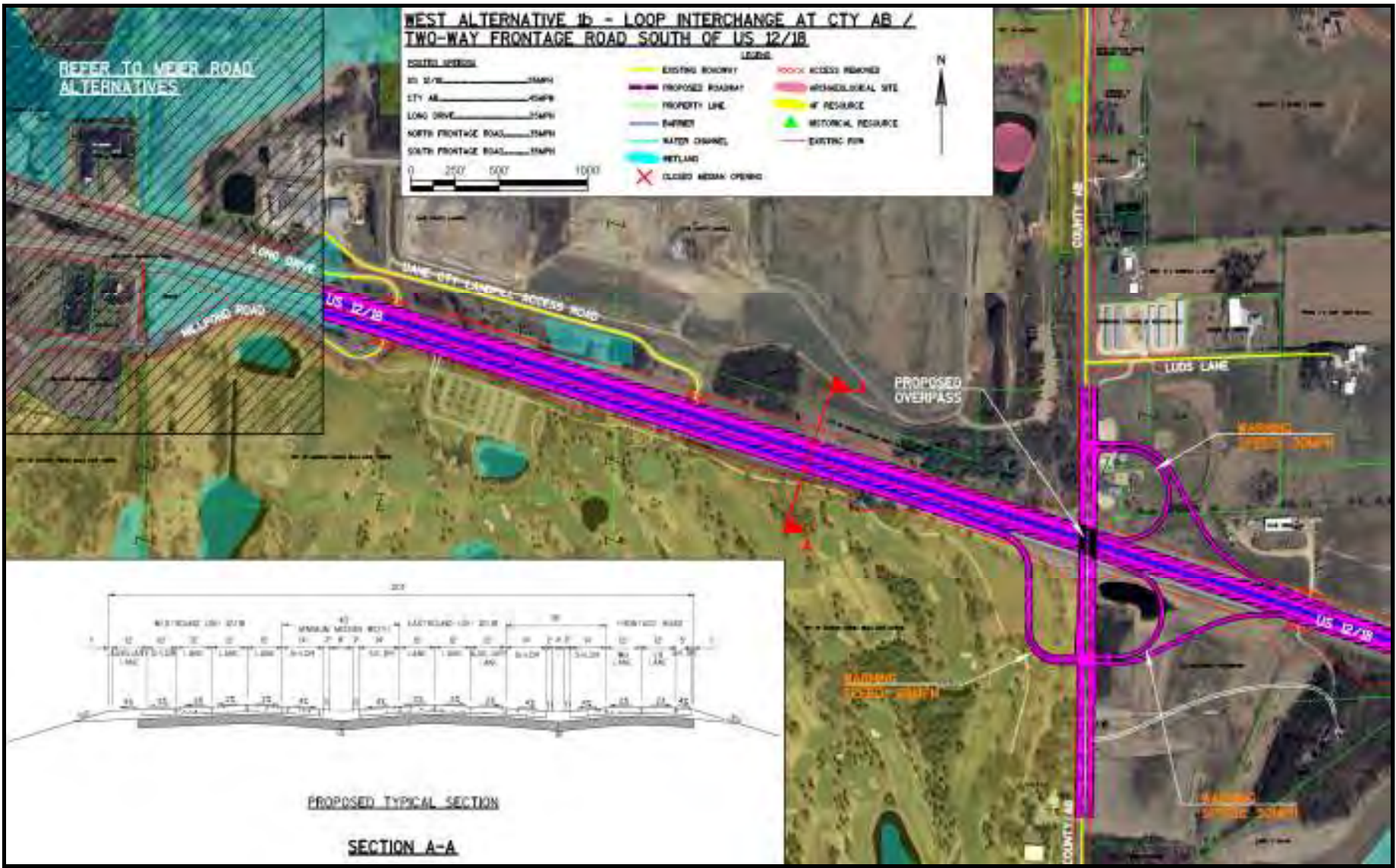


US 12/18 Mainline West Segment



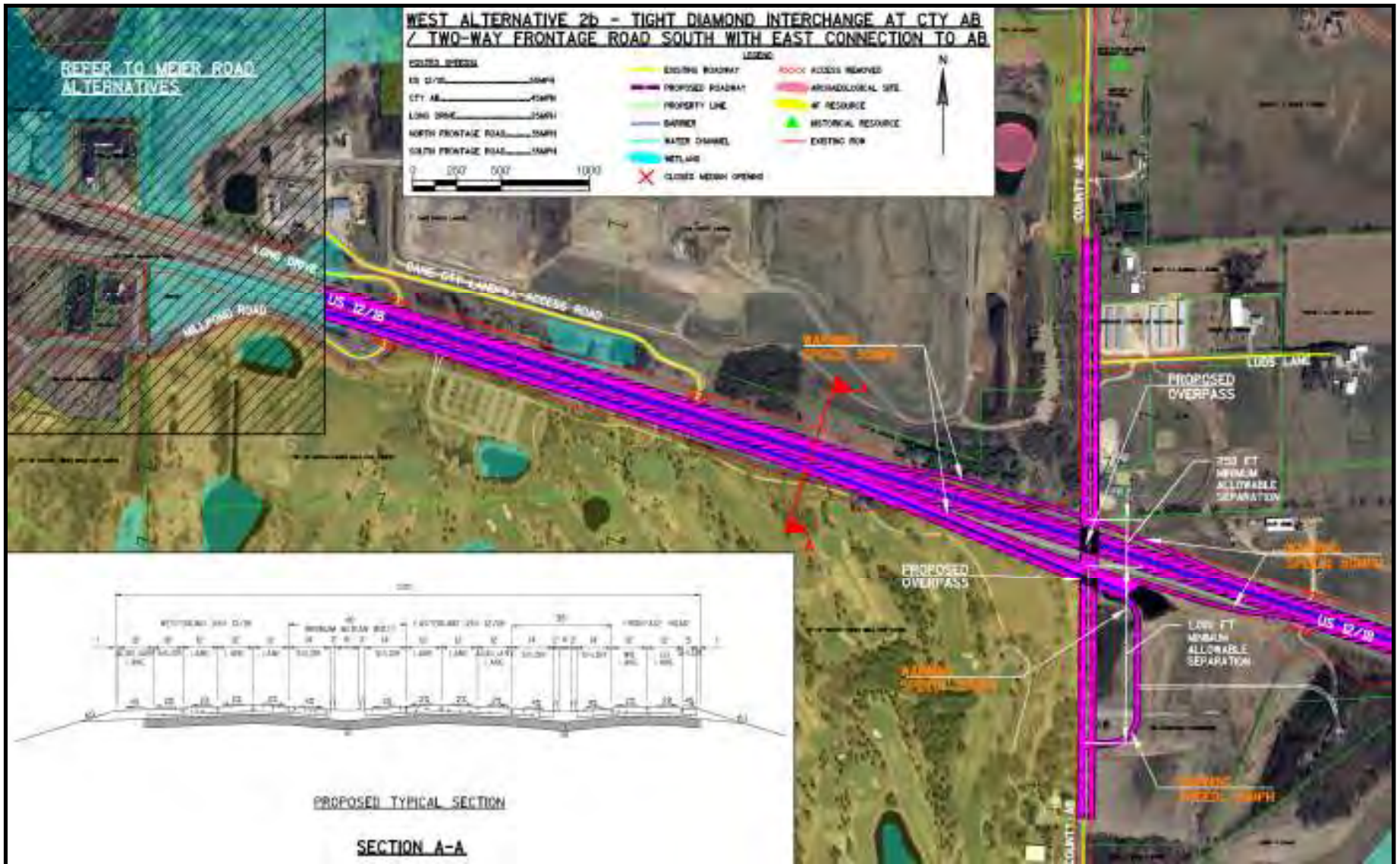


US 12/18 Mainline West Segment



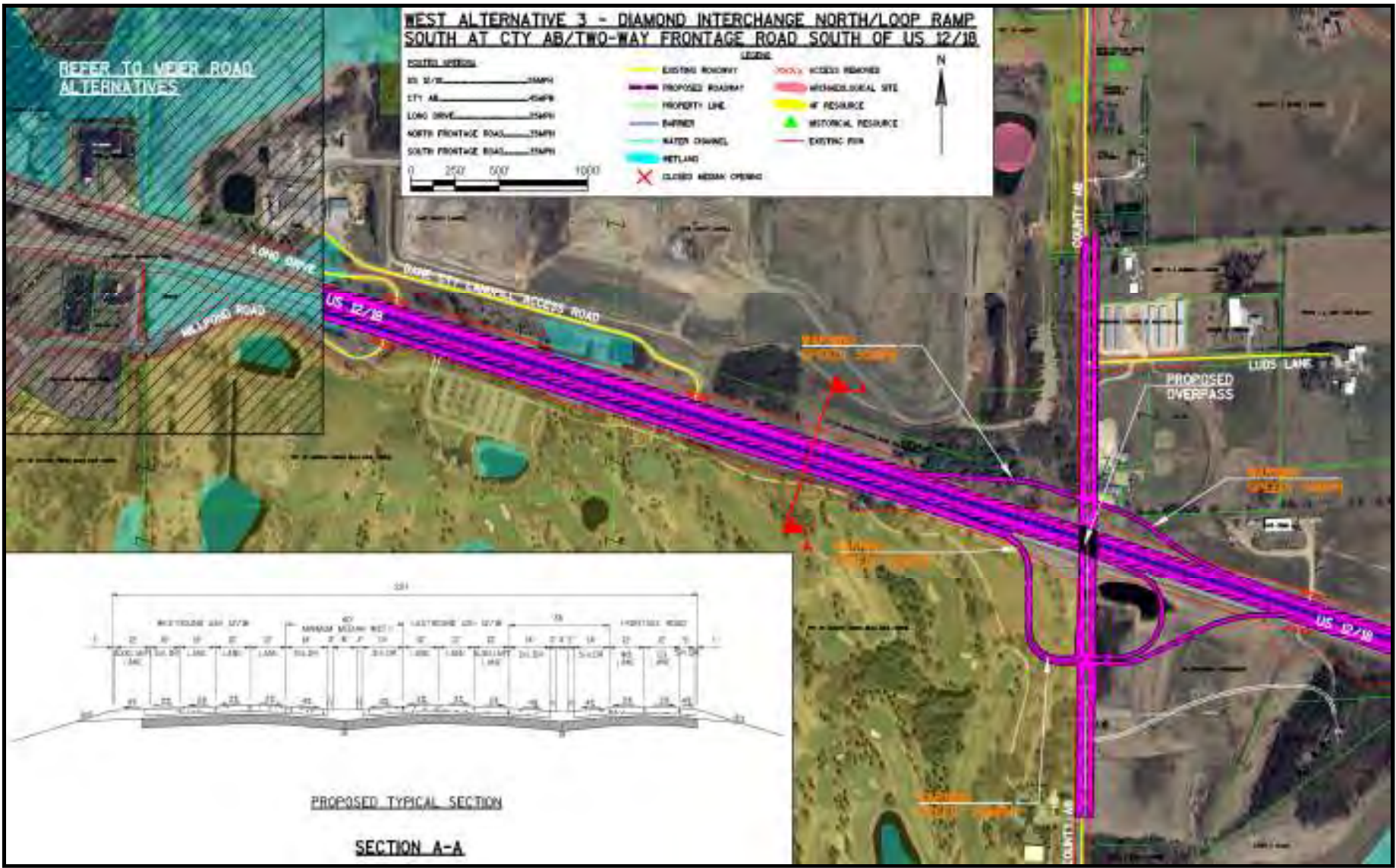


US 12/18 Mainline West Segment



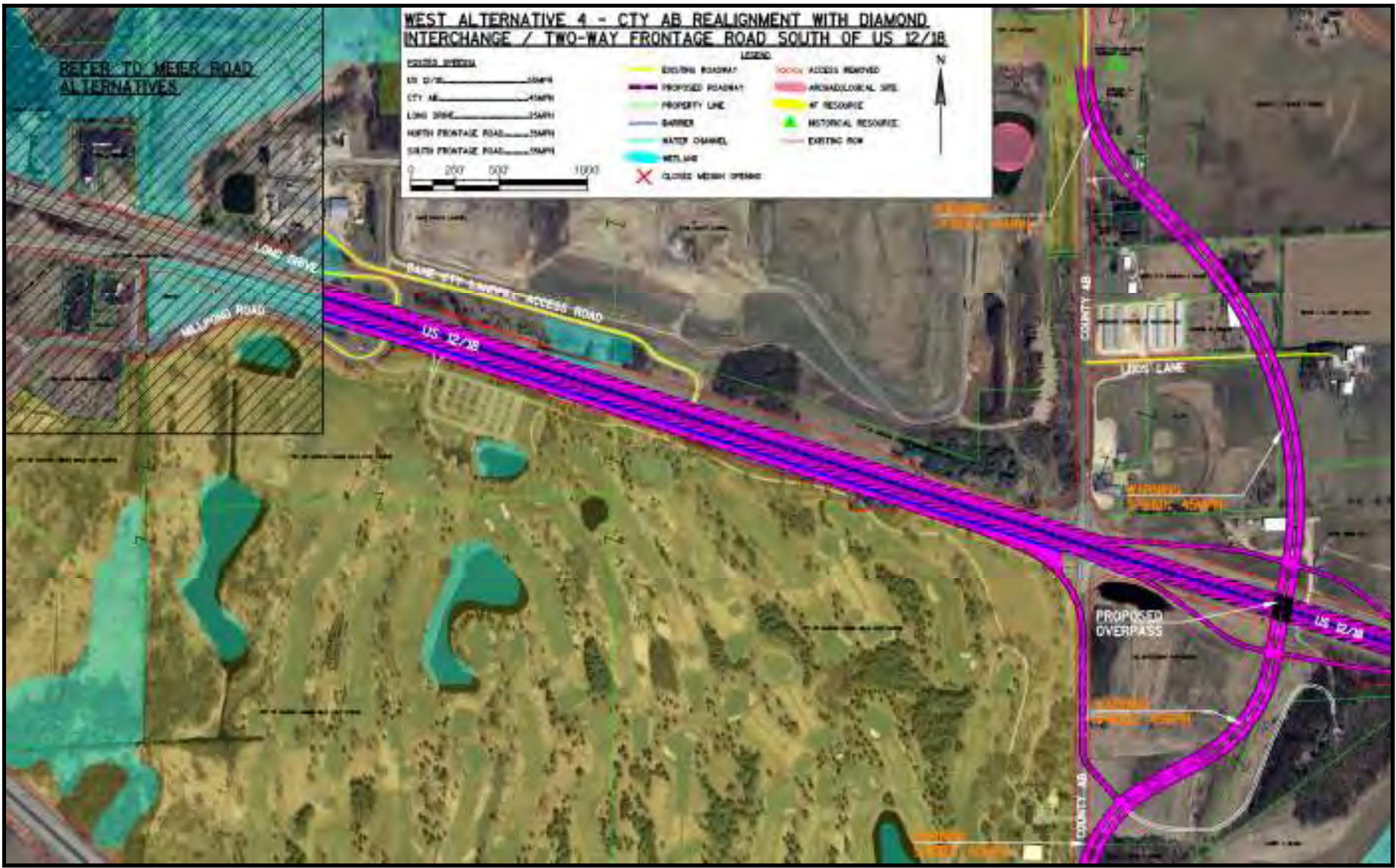


US 12/18 Mainline West Segment





US 12/18 Mainline West Segment



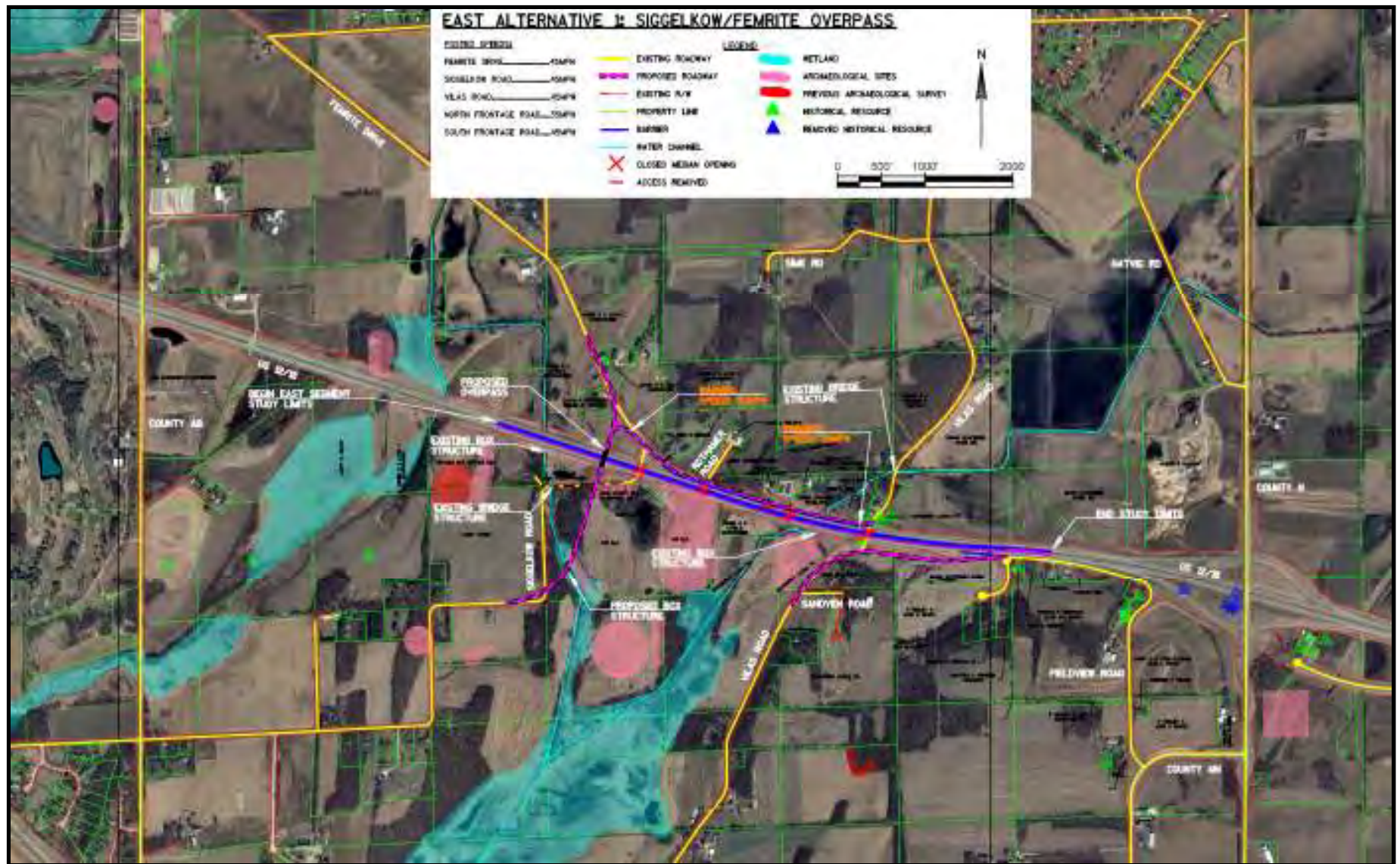


US 12/18 Mainline East Segment - Overview



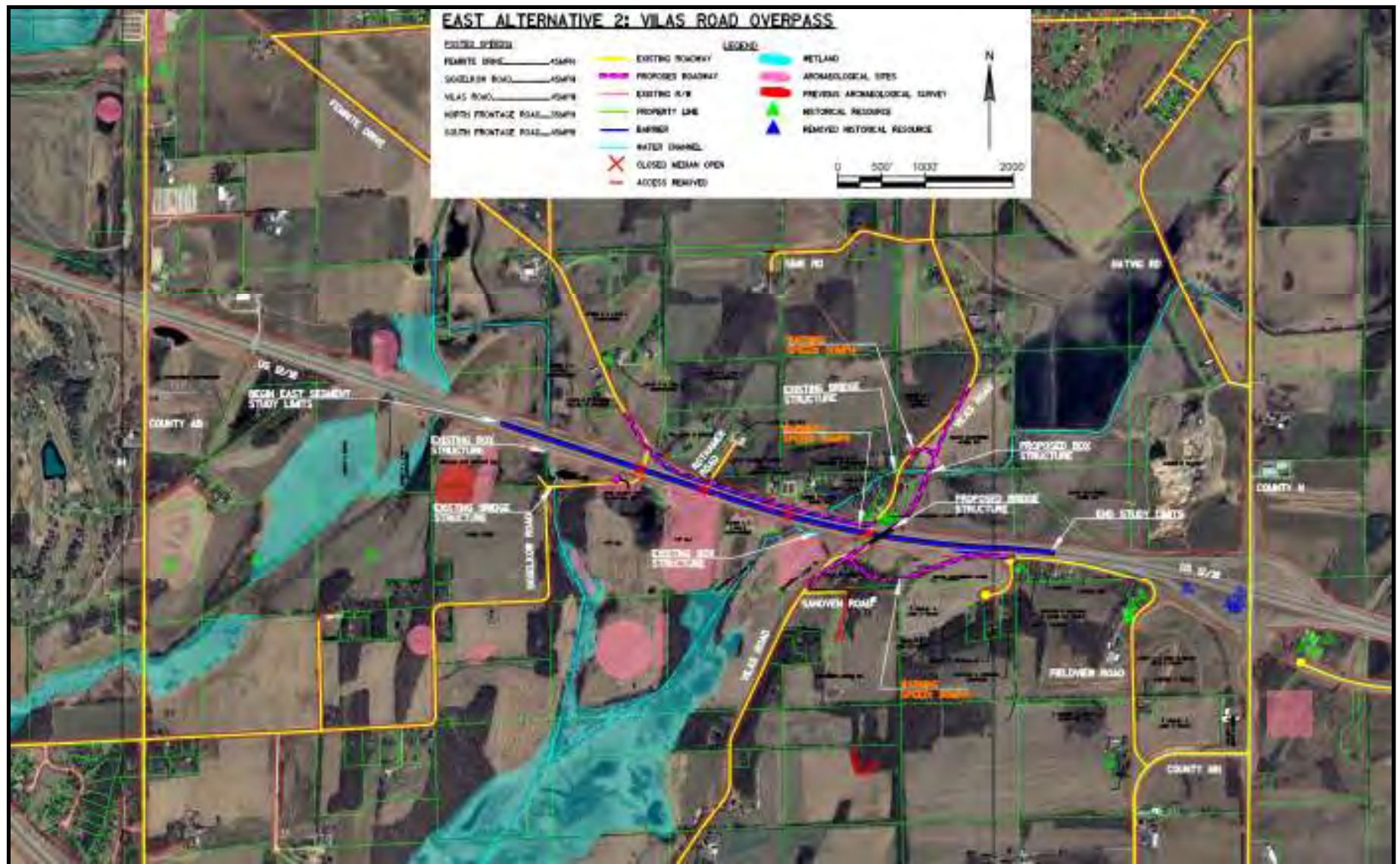


US 12/18 Mainline East Segment



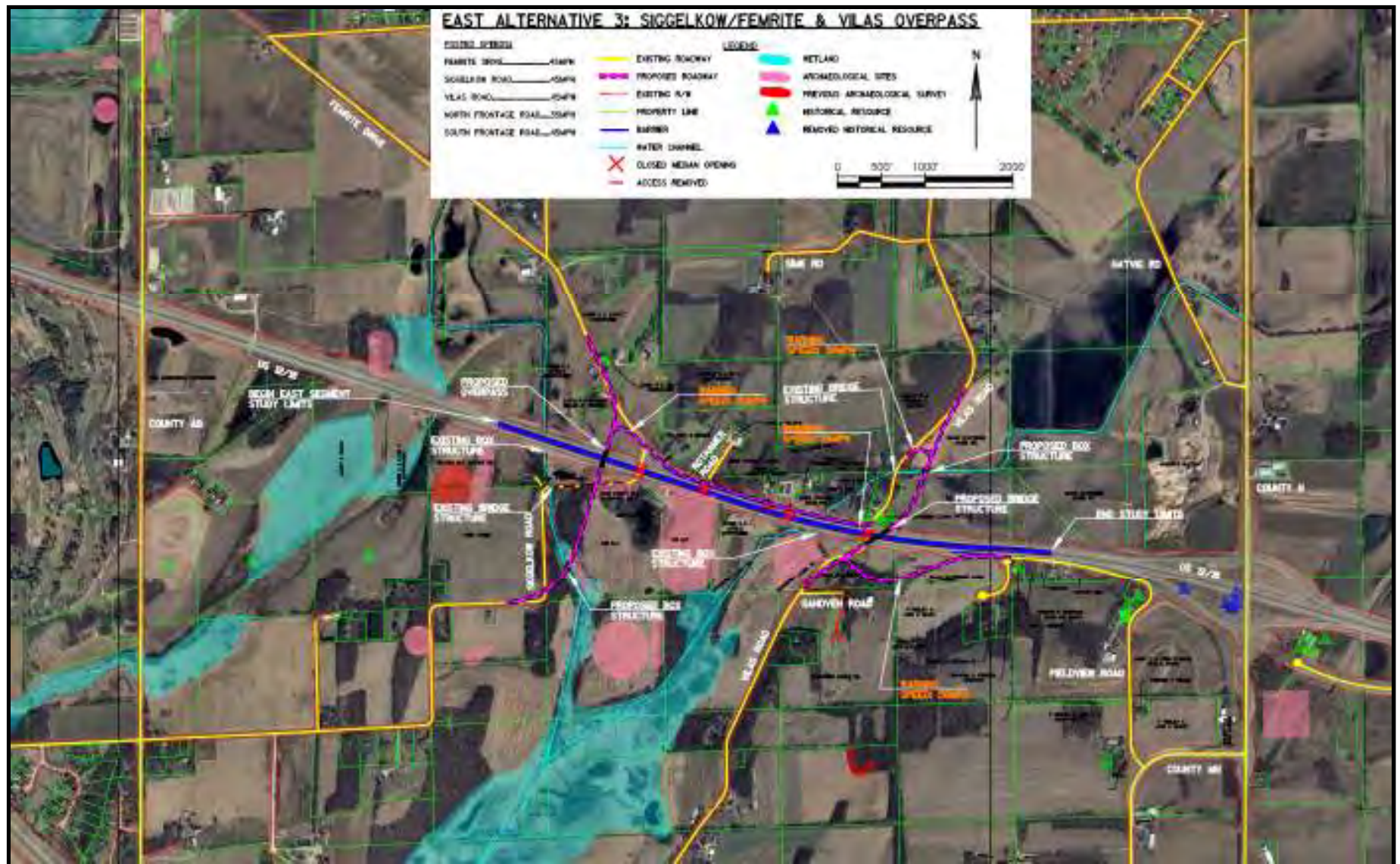


US 12/18 Mainline East Segment



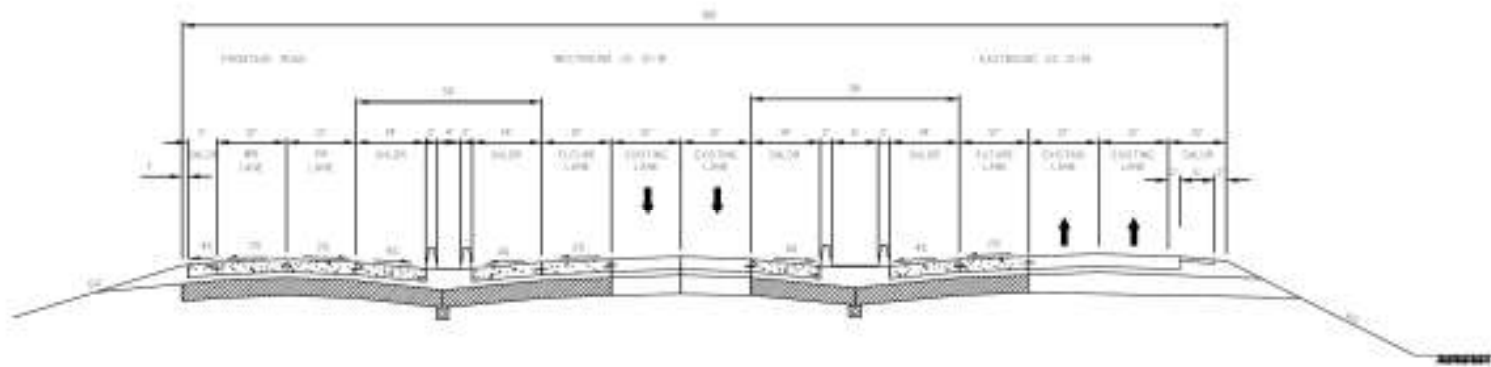


US 12/18 Mainline East Segment

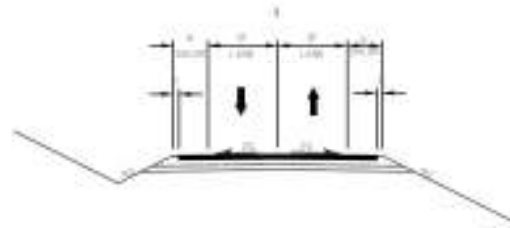




US 12/18 Mainline East Segment



PROPOSED TYPICAL SECTION
20+00
NORTH FRONTAGE ROAD



PROPOSED TYPICAL SECTION
20+00
MAINLINE EAST SEGMENT



Project Schedule



Public Information Meeting (discuss alternatives)	April 24, 2013
Project Website	May 2013
Refine alternatives and impacts	Spring 2013
Agency/Local Officials Meeting (present preferred alternative)	Summer 2013
Public Information Meeting (present preferred alternative)	Summer 2013
Final Design Recommendation Report	Fall 2013
Environmental Assessment submittal	Late 2013
30% Plan submittal	Late 2013



Public Input “Dot” Exercise



STEP 1 - Place number on the map

STEP 2 – Place corresponding number on form and write comment



US 12/18 Meier Road Overpass Alternatives:



Contact Info



Craig Pringle – Project Manager

WisDOT – SW Region

2101 Wright Street

Madison, WI 53704

608-242-8058

craig.pringle@dot.wi.gov

Darin Blang

Consultant Project Leader

Dane Partners

608-243-6475

dblank@otie.com

Lisa Dreifuerst

Deputy Project Manager

Dane Partners

608-243-6478

ldreifuerst@otie.com



Questions



Your input is important



US 12/18 Freeway Conversion Study



**I-39/90 - County N
Dane County**

**Public Information Meeting #2
April 24, 2013**