



US 12/18 Freeway Conversion Study



**I-39/90 - County N
Dane County**

**Public Information Meeting #1
July 31, 2012**



Study Team



■ **WisDOT Project Manager**

- **Craig Pringle – Project Manager I-39/90 North Segment**

■ **Dane Partners**

- **Darin Blang – US 12/18 Freeway Conversion Study Leader**
- **Matt Barr – Design Segment Leader**
- **Beth Klemann – Environmental Leader**
- **Lisa Dreifuerst – I-39/90 Deputy Project Manager**



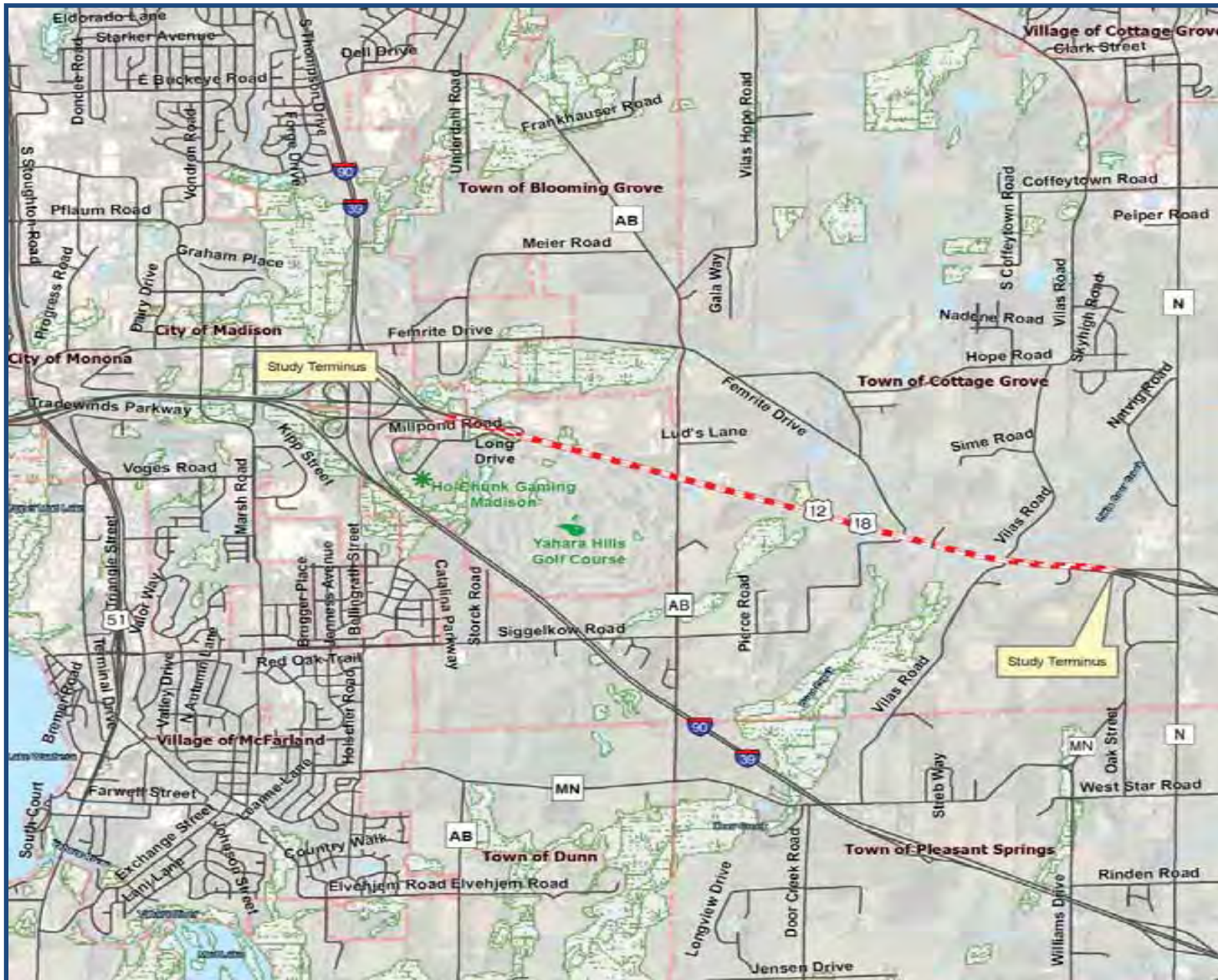
Purpose of Meeting



- **Introduce the US 12/18 Freeway Conversion Study**
- **Explain the study process**
 - **Objectives of the study?**
 - **Freeway vs. Expressway?**
 - **Possible improvements?**
 - **How will the study be conducted?**
 - **What is the study schedule?**
- **Gather information and public input**



Corridor Overview



Corridor Overview

- **Dane County**
- **Municipalities**
 - City of Madison
 - Village of Cottage Grove, McFarland
- **Townships**
 - Blooming Grove, Cottage Grove, Dunn, Pleasant
- **Ho-Chunk Nation**
- **Businesses & Residents**
- **Commuters/Motorists**



Study Objectives

- **Develop a vision of the corridor for the future**
 - Identify layout of ultimate freeway conversion
 - Identify short and long-term improvements (year 2040)
- **Preserve the corridor**
- **Support local land use plans**
- **Improve overall corridor safety**
- **Be sensitive to environmental and social factors**





Possible Improvements



- **Convert from a four-lane expressway to a four-lane freeway**
 - **Eliminate all access points along US 12/18 except at interchanges**
 - **May include a new interchange**
 - **grade separated crossings over/under US 12/18**
 - **frontage roads or other local road connections**
- **Freeway conversion could be phased (I-39 to County AB)**
- **Could include short-term improvements at select locations based on safety analysis and local development**
- ***No construction activities planned at this time***



Expressway vs. Freeway



- **Expressway (45 mph to 55 mph)**
 - **A high speed divided highway - 4 lanes with median**
 - **Access is partially controlled**
 - **At-grade intersections, median crossovers, driveways allowed**

- **Freeway (55 mph or greater)**
 - **An expressway with fully controlled access**
 - **Access controlled with interchanges, overpasses, frontage roads, cul-de-sacs**



Study Phases



- **Data gathering**
- **Develop conceptual design alternatives and identify impacts**
- **Prepare environmental document**
- **Develop 30% plans for the preferred alternative**





Data Gathering



- **Traffic counts and travel demand forecasting**
- **Crash analysis and safety evaluation**
- **Access control evaluation**
- **Land use and natural/cultural resources**
- **Identify current deficiencies**
- **Input from local officials and the public**



Develop Alternatives & Identify Impacts



■ Develop conceptual design alternatives

- Potential interchange location & configuration
- Grade separated crossings
- Frontage roads and local road improvements

■ Identify impacts of each alternative

- Determine right of way impacts
- Identify environmental impacts
- Develop preliminary cost estimates





Environmental Assessment & 30% Plans



- **Document purpose and need for freeway conversion**
- **Describe the alternatives considered**
- **Evaluate the environmental impact of each alternative**
- **Identify a preferred alternative that addresses the needs of the corridor**
- **Develop 30% plans**
- **Recommend short-term improvements**





Project Schedule



Local Officials Meeting #1	June 18, 2012
Public Information Meeting #1 <ul style="list-style-type: none"><i>Present Study & Gather Information</i>	July 31, 2012
Data Gathering	Summer 2012
Develop alternatives and identify impacts	Fall 2012
Local Officials & Public Information Meeting #2 <ul style="list-style-type: none"><i>Discuss alternatives</i>	Late 2012
Refine alternatives and impacts	Early 2013
Local Officials & Public Information Meeting #3 <ul style="list-style-type: none"><i>Identify Preferred Alternative</i>	Spring 2013
Submit Environmental Document and 30% Plans	Fall 2013



Public Involvement



- **Collaborative Effort**
- **Public Information Meeting during each phase of the study**
- **Meetings with local officials and special interest groups**
- **Future meetings with business and property owners**



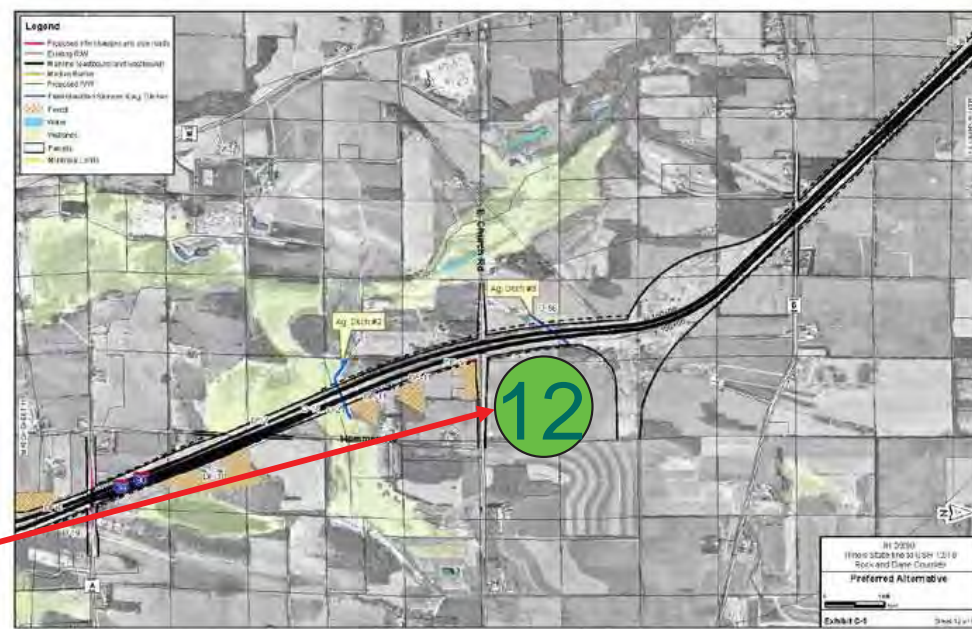


Public Input 'Dot' Exercise



STEP 1 - Place number on the map

STEP 2 - Place corresponding number on form and write comment



12 12

What are the issues with the highway? Where do they occur? What time of day? What day of the week?

ISSUE #1:

Where: _____

When: _____

Wisconsin Department of Transportation
 154 1276 Parkway, Madison, WI 53704
 39/90 IMPROVING a gateway to Wisconsin

Comment Form

Please return this completed form today, or e-mail to:

Craig Prough
 WISDOT 6th Region
 2101 Wright Street, Madison, WI 53704
 craig.prough@dot.wis.gov

Name: _____

Mailing Address: _____

Phone Number: _____

What are the issues with the highway? Where do they occur? What time of day? What day of the week?

ISSUE #1: _____

ISSUE #2: _____

ISSUE #3: _____



Team Contacts



Craig Pringle – WisDOT Project Manager
WisDOT – SW Region
2101 Wright Street
Madison, WI 53704
608-242-8058
craig.pringle@dot.wi.gov

Darin Blang – Consultant Study Leader
Dane Partners
5100 Eastpark Boulevard, Suite 200
Madison, WI 53718
608-243-6475
dclang@otie.com

Matt Barr
Design Segment Leader
Dane Partners
608-443-1261
barrm@ayresassociates.com

Beth Klemann
Environmental Leader
Dane Partners
262-522-4921
klemanne@ayresassociates.com

Lisa Dreifuerst
Deputy Project Manager
Dane Partners
608-243-6478
ldreifuerst@otie.com



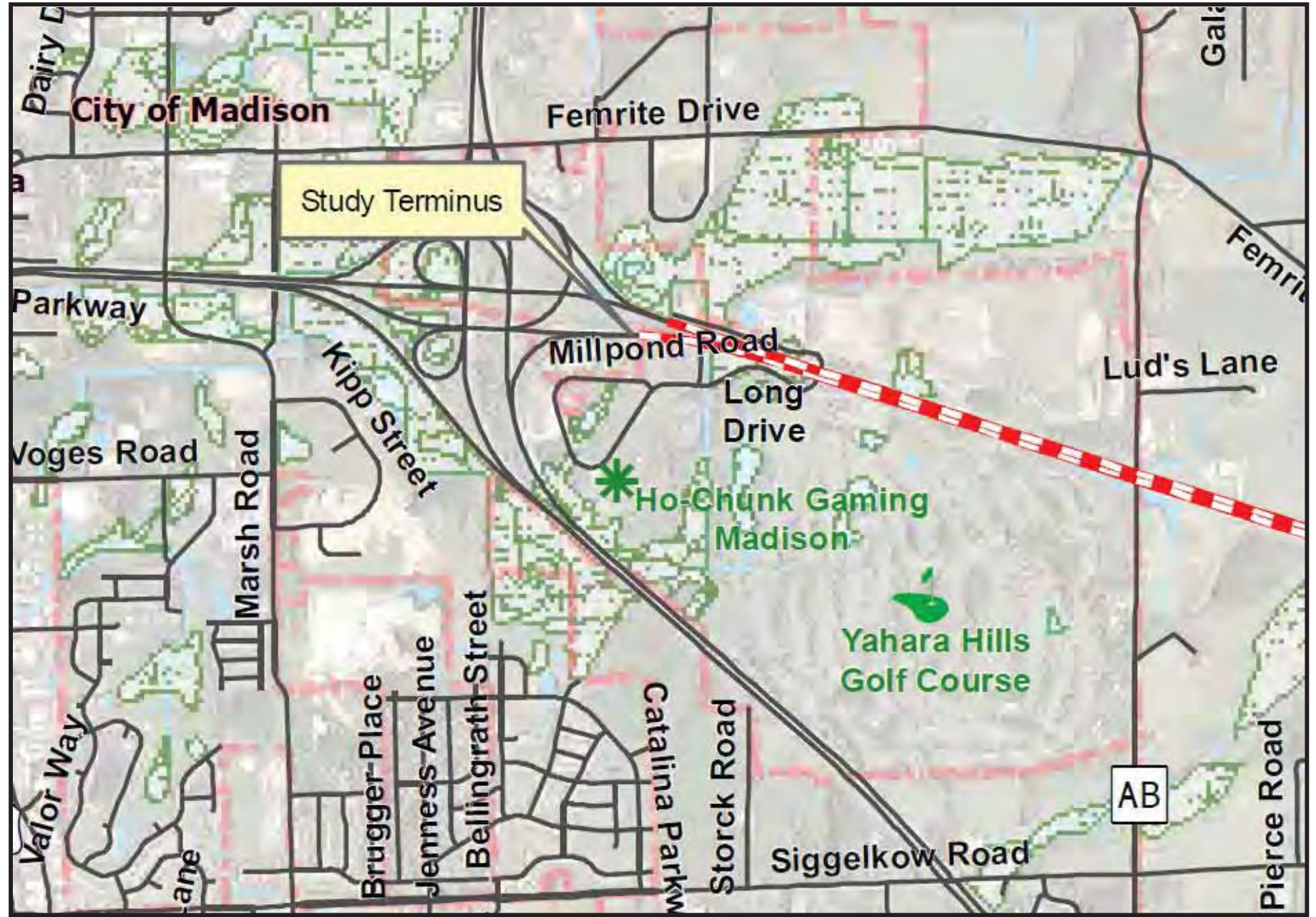
Questions



Your input is important



Corridor Discussion





Corridor Discussion

