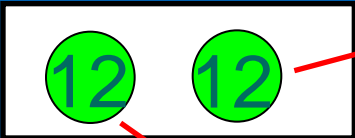
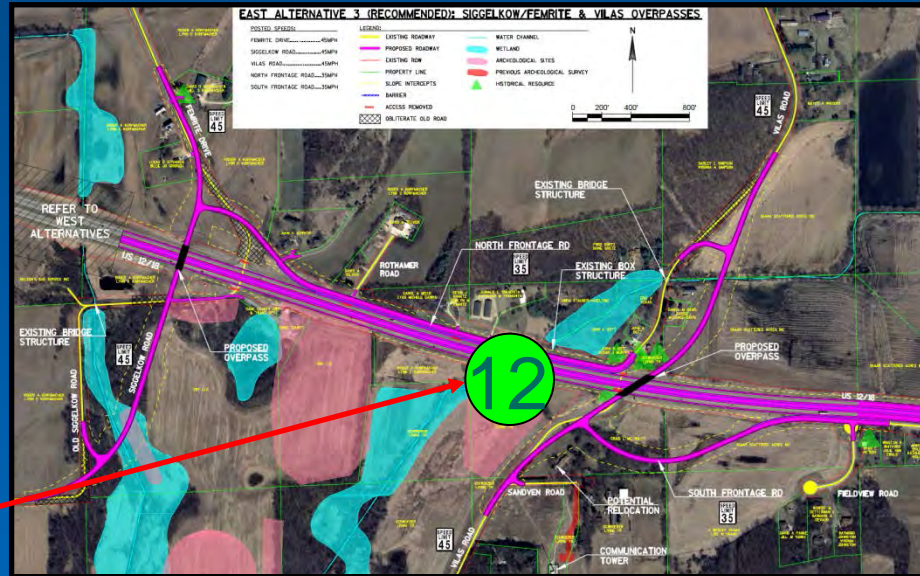


Public Input "Dot" Exercise

STEP 1 - Place number on the map

STEP 2 - Place corresponding number on form and write comment



Project Comments: _____

Division of Transportation
System Development
Southern Region Office
2101 Wright Street
Madison, WI 53704

39/90
IMPROVING
a gateway to Wisconsin

Comment Sheet
Project ID: 3080-10-01
I-39/90 Project North Segment
Public Information Meeting
November 19, 2013

From: (Please Print) _____
To: _____

Name: _____
Address: _____
City: _____ Zip: _____
Phone Number: _____
Email: _____

Craig Pringle, P.E.
WisDOT Project Manager
North Segment
2101 Wright Street
Madison, WI 53704

Project Comments:

Comments to improve future meetings:

Wisconsin Department of Transportation
Federal Highway Administration

US 12/18 Freeway Conversion Study



Public Information Meeting #3

November 19, 2013

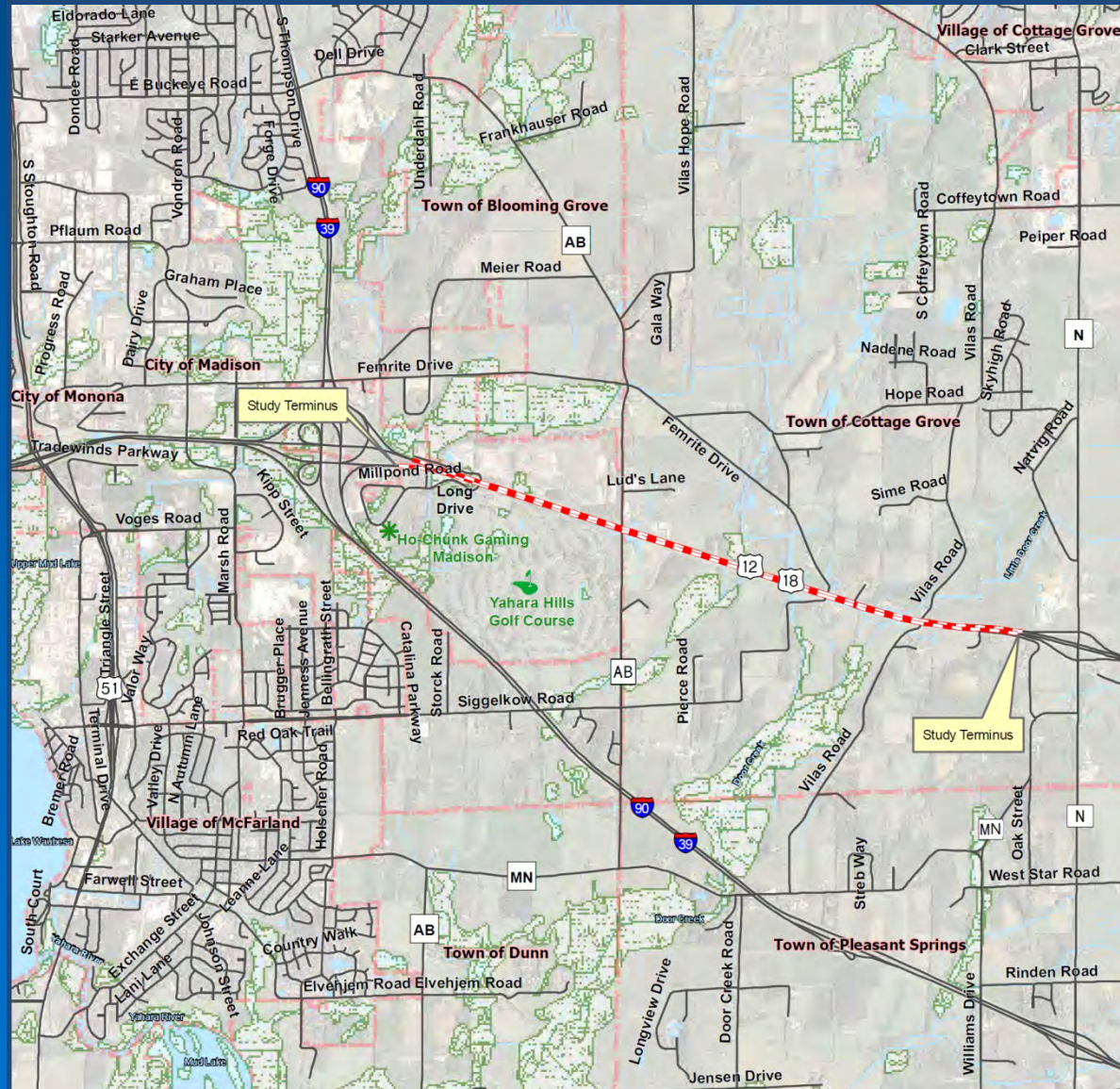
McFarland High School



Purpose of Meeting

- Review alternatives to be evaluated in environmental document
 - US 12/18 mainline west segment
 - US 12/18 mainline east segment
- Discuss alternative impacts
- Discuss alternative recommendations
- Discuss study schedule
- Obtain your input

Corridor Overview



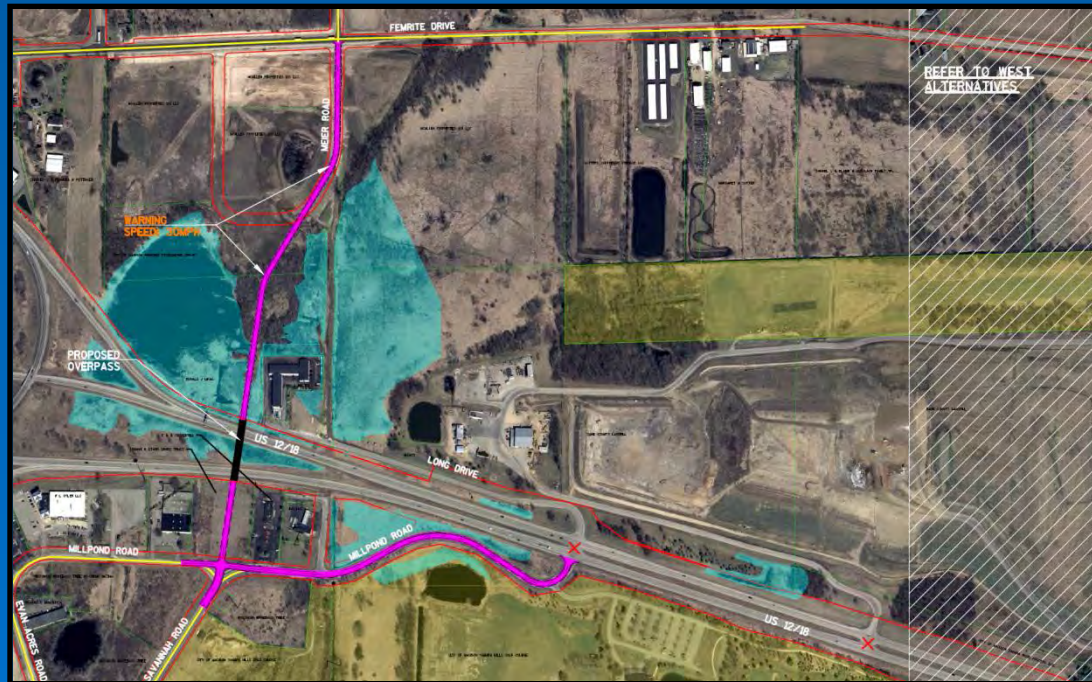
Purpose of Study

- Develop alternatives to convert US 12/18 from a 4-lane expressway to a 4-lane freeway
 - Remove all access points along US 12/18 except at interchanges
 - Construct new interchange at County AB
 - Grade separated crossings over US 12/18
 - Develop frontage road and other local road connections
- Identify recommended freeway conversion alternative
- Preserve the corridor

- Data Gathering ✓
- Develop alternatives ✓
- Identify impacts and recommended alternative
- Environmental Assessment
- Develop 30% plans for the recommended alternative
 - Preserve the US 12/18 corridor
 - No construction planned at this time

- Millpond Road Intersection Improvements
 - Construction in 2014
 - Offset eastbound right turn lane
 - Widen Millpond Road at intersection
- I-39/90 Expansion to 6 lanes
 - Illinois State Line to Madison
 - Temporary Widening – Beloit to Illinois state line (2013)
 - WIS 11/Racine Street Interchange – Janesville (2013)
 - Traffic Cameras & Message Boards – Dane/Rock County (2013)
 - Mainline reconstruction (2015 – 2021)
- Beltline Interchange
 - Construction date to be determined

- Meier Road Extension & Overpass
 - Extend Meier Road over US 12/18
 - Access remains at Millpond Road and Long Drive under current beltline interchange configuration
 - Scheduled for 2019



- Extend turn lanes (Vilas Road)
- Add street lighting
- Improve street signing

Corridor Overview – West



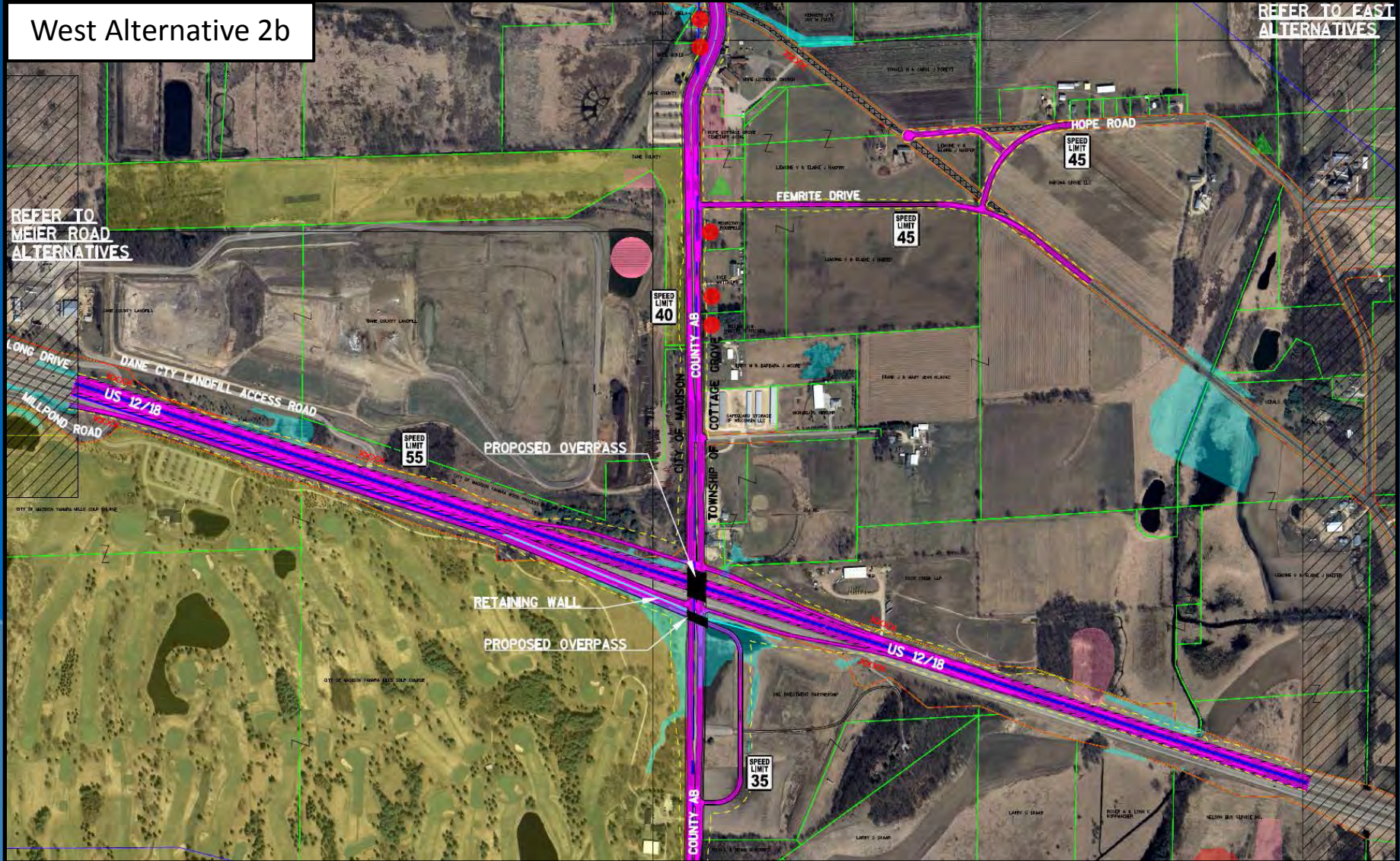
Map Data © 2013 Google



Section 4(f) Requirements

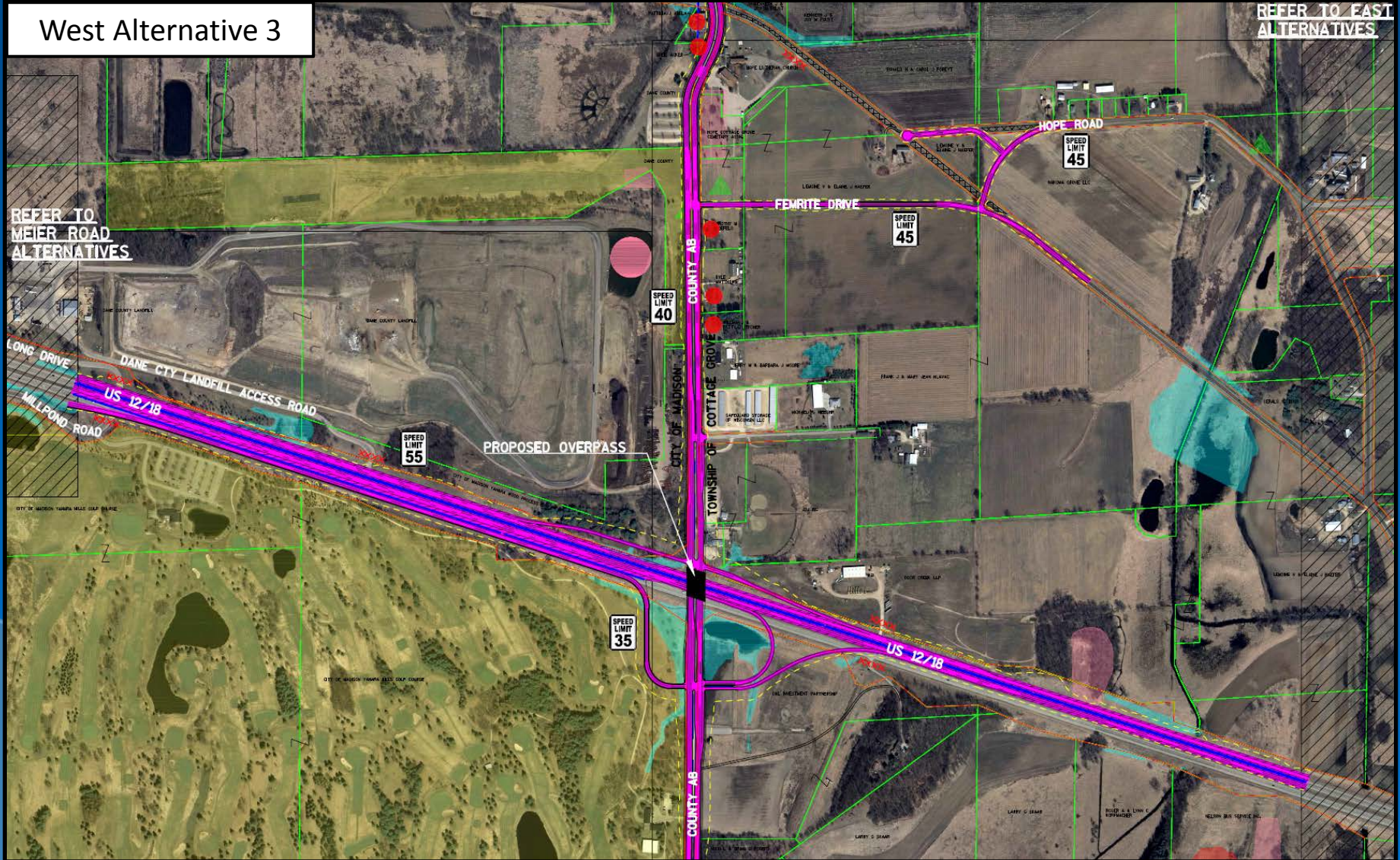
- What is Section 4(f)?
 - Required on all federally funded transportation actions
 - Federal Act stating, “The U.S. Secretary shall not approve any program or project which involves the use of any publicly owned land from a public park, recreation area, historic site.....unless there is no feasible and prudent alternative to the use of such land and such project includes all possible planning to minimize harm.”
- 4(f) resources within study boundaries:
 - Yahara Hills Golf Course
 - Bill Kettle Park along CTH AB
 - Cemetery along CTH AB
 - Other historic sites

West Segment Alternatives

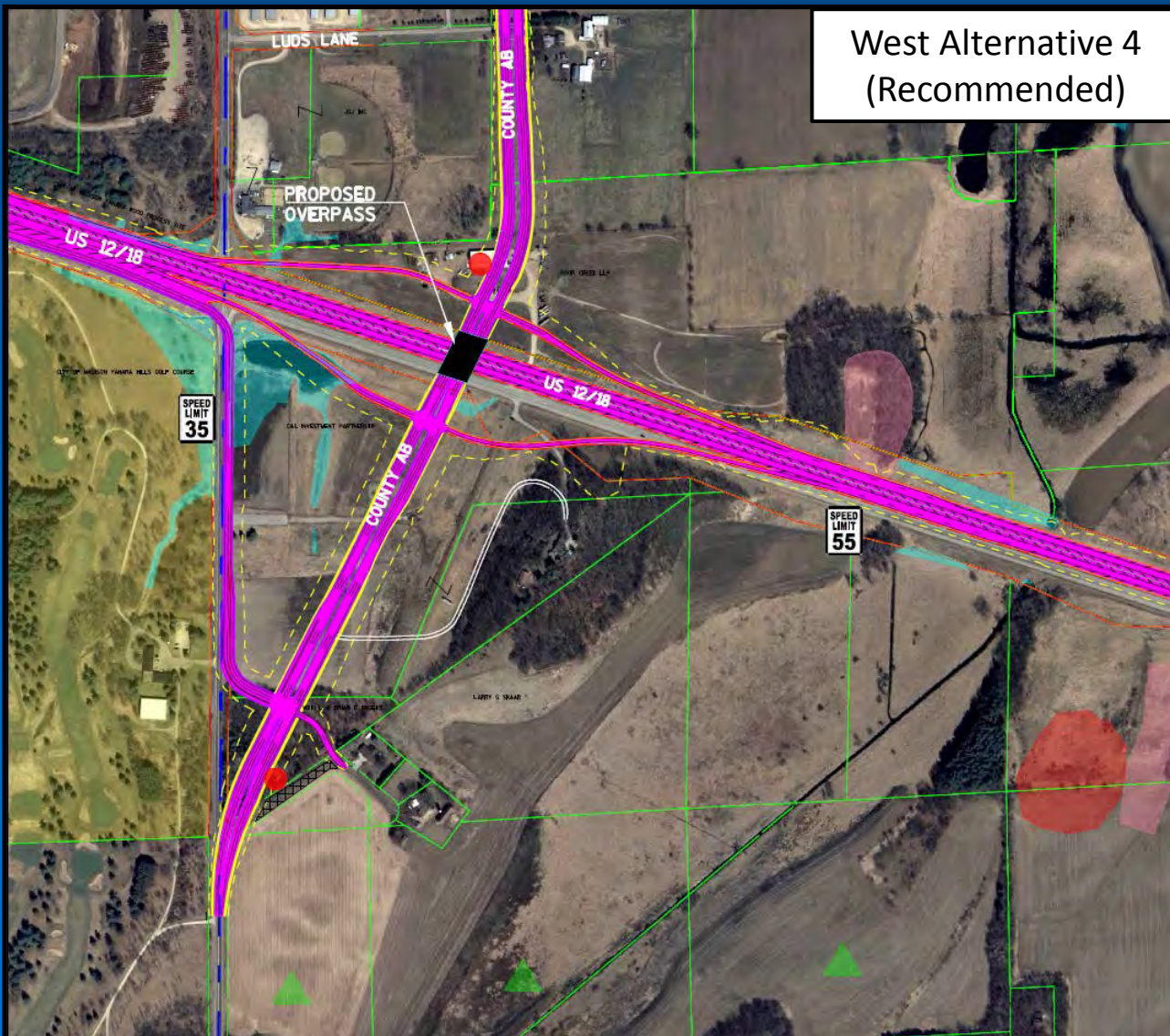


West Segment Alternatives

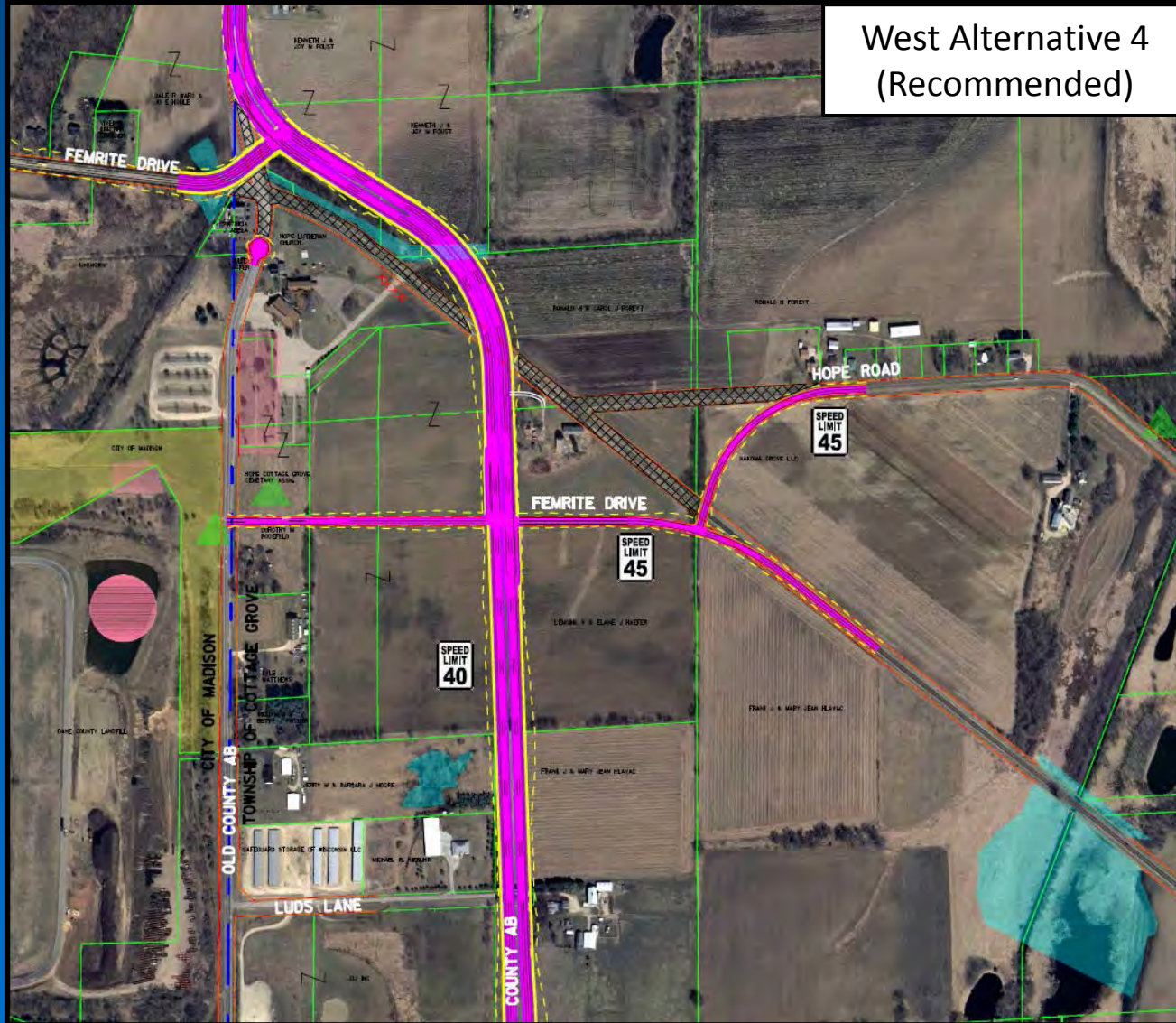
West Alternative 3



West Segment Alternatives



West Segment Alternatives



Corridor Overview – East

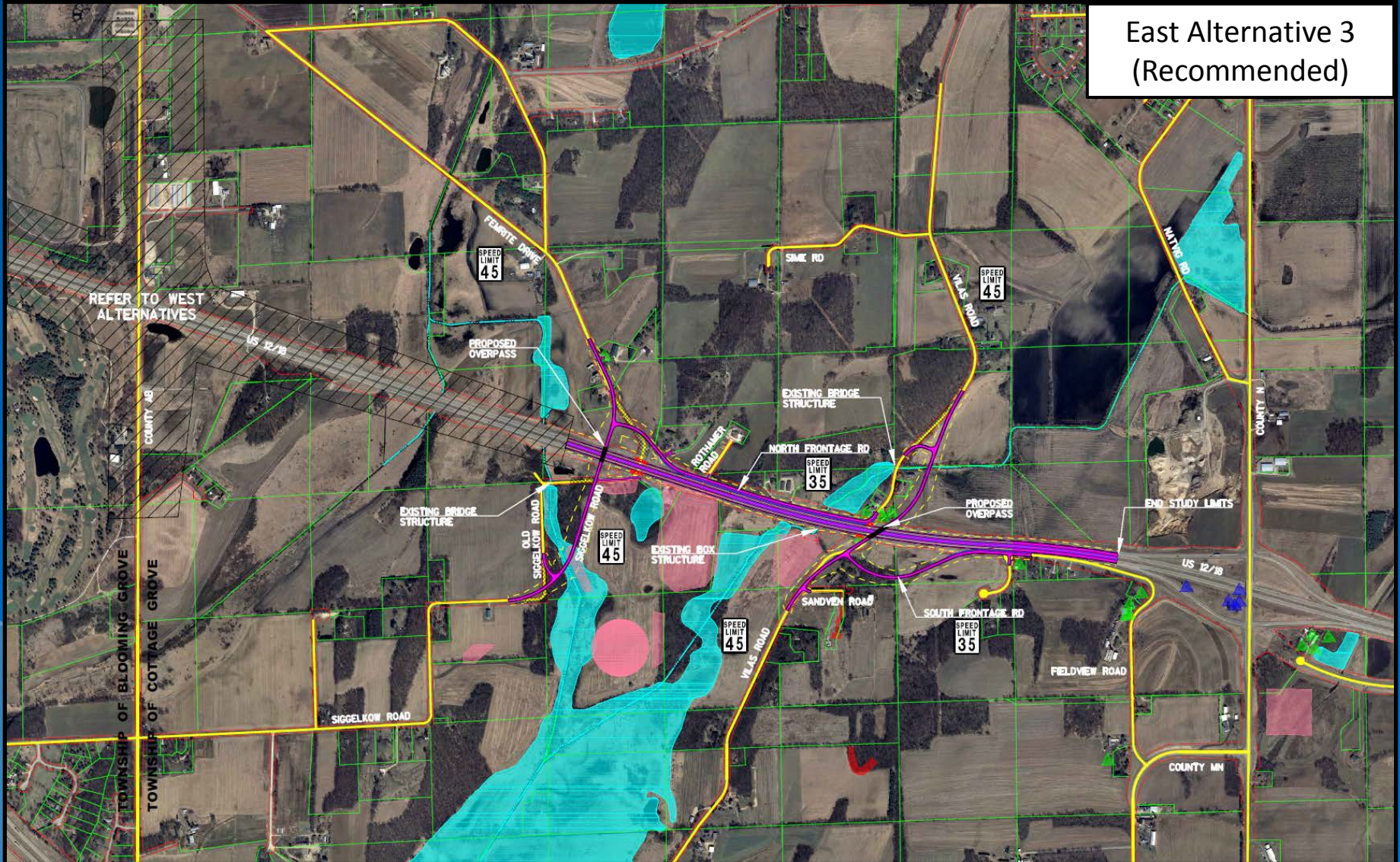


Map Data © 2013 Google

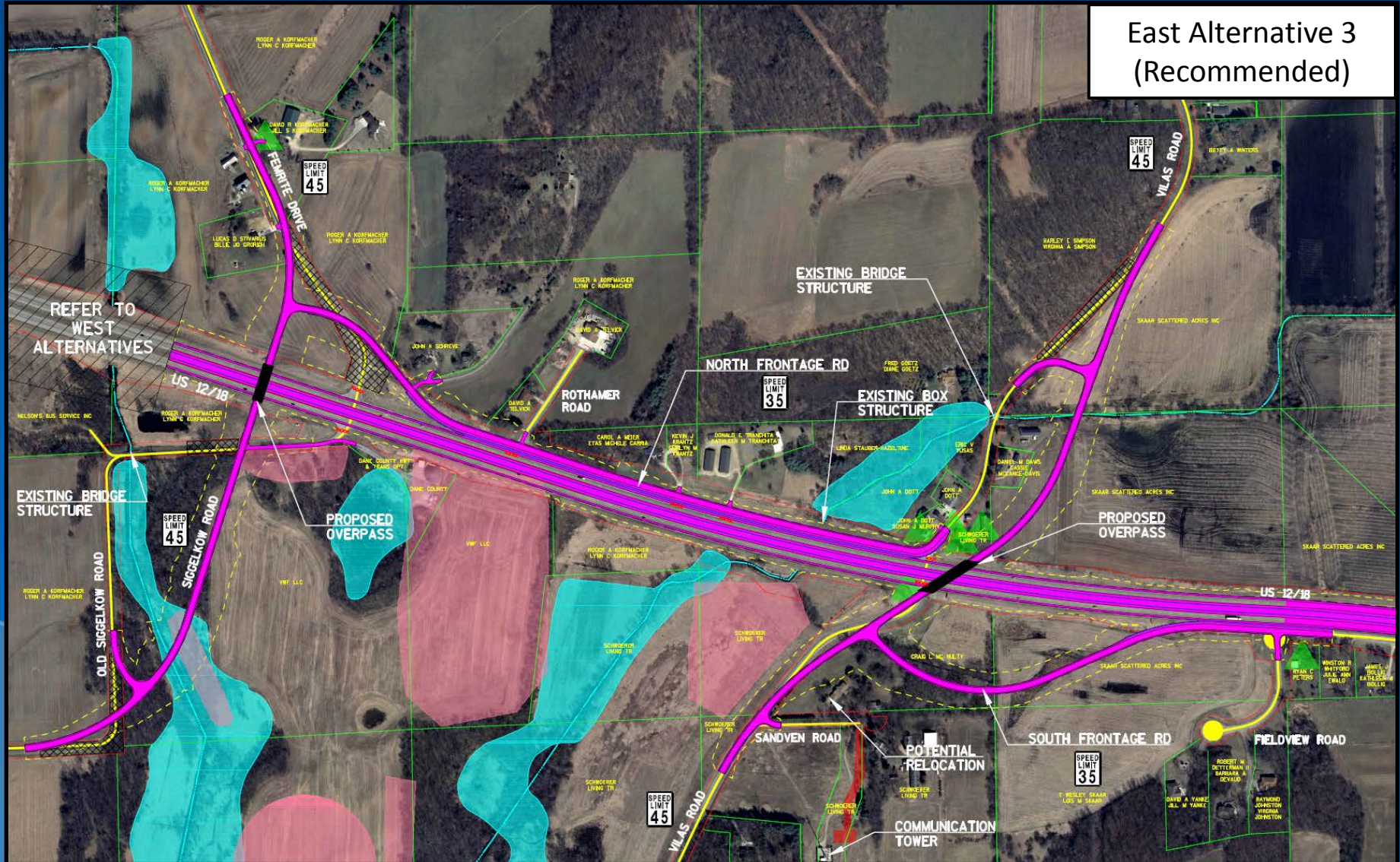


East Segment Alternatives

East Alternative 3
 (Recommended)



East Segment Alternatives



**East Alternative 3
 (Recommended)**

Alternative Impacts

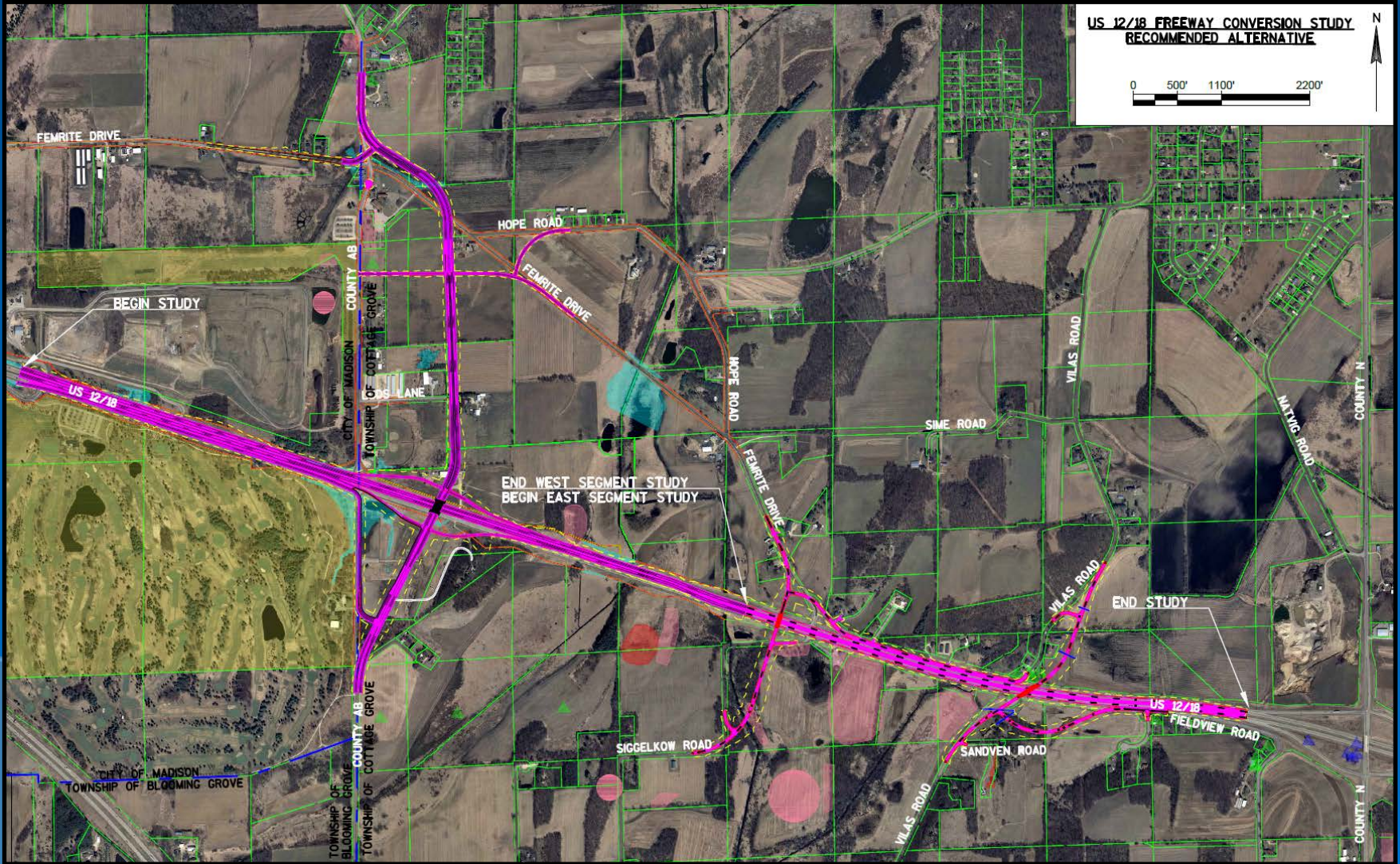
	West Section			East Section
	Alternative 2b	Alternative 3	Alternative 4 (Recommended)	Alternative 3 (Recommended)
Roadway Centerline Length				
US 12/18 (miles)	1.7	1.7	1.7	1.7
County AB Ramps (miles)	1.4	1.4	1.4	N/A
County AB (miles)	1.2	1.2	1.6	N/A
Local Roads (miles)	2.5	2.3	3.0	2.6
Opinion of Probable Costs				
Construction (Million \$)	\$36.9	\$32.2	\$34.0	\$17.7
Right of Way (Million \$)	\$4.5	\$5.8	\$7.5	\$0.4
Relocation (Million \$)*	\$2.1	\$2.1	\$1.0	\$0.0
Total (Million \$)	\$43.5	\$40.1	\$42.5	\$18.1
Right of Way Requirements				
Wetland (acres)	7	8	9	2
4(f) Land (acres)	7	10	0	0
Ag Land (acres)	8	8	44	19
Other (acres)	31	31	34	12
Total (acres)	53	57	87	33
Farm Impacts				
R/W Required (number of farms)	3	3	8	13
Severances (number of farms)	1	1	2	2
Relocations				
Business	1	1	1	0
Farm	0	0	0	0
Residential	4	4	1	1
Other Impacts				
Possible Historical Sites (number)**	3	3	4	7
Possible Arch Sites (number)**	2	2	3	3
Possible Hazardous Materials Sites (number)**	5	5	5	4

* Relocation costs were estimate at 2.5 times the fair market value

** Numbers of historical, arch, and haz mat sites are based on literature searches; will be updated once field work is complete.

- West Segment – Alternative 4 (Realigned County AB)
 - Avoids impacts to 4(f) lands – Yahara Hills, Bill Kettle Park, cemetery other historical/archaeological sites
 - Fewer Relocations
 - Positive feedback from local officials
- East Segment – Alternative 3 (Dual Overpasses)
 - Provides better local road connections
 - More support from public than single overpass options

Recommended Alternatives



Project Schedule

Public Meeting #1 (introduce study) ✓	July 31, 2012
Public Meeting #2 (discuss alternatives) ✓	April 24, 2013
Public Meeting #3 (impacts/recommendations)	November 19, 2013
Refine Alternatives & Impacts	Winter 2013-14
Final Environmental Assessment Submittal	Fall 2014
30% Design Submittal & Study Conclusion	Fall 2014

Contact Information

Craig Pringle – Project Manager

WisDOT SW Region Project Field Office

111 Interstate Blvd

Edgerton, WI 53534

(608) 884-7132

craig.pringle@dot.wi.gov

Lisa Dreifuerst

Deputy Project Manager

Dane Partners

(608) 243-6478

ldreifuerst@otie.com

Darin Blang

Consultant Study Team

Dane Partners

(608) 243-6475

dblanc@otie.com



Website Information

US 12/18 Study Information:

<http://www1.wisconsindot.gov/Pages/projects/by-region/sw/1218conv/default.aspx>

I-39/90 Corridor Expansion Information:

<http://projects.511wi.gov/i-39-90/>

Like us on Facebook: Wisconsin I-39/90 Project



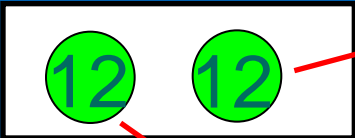
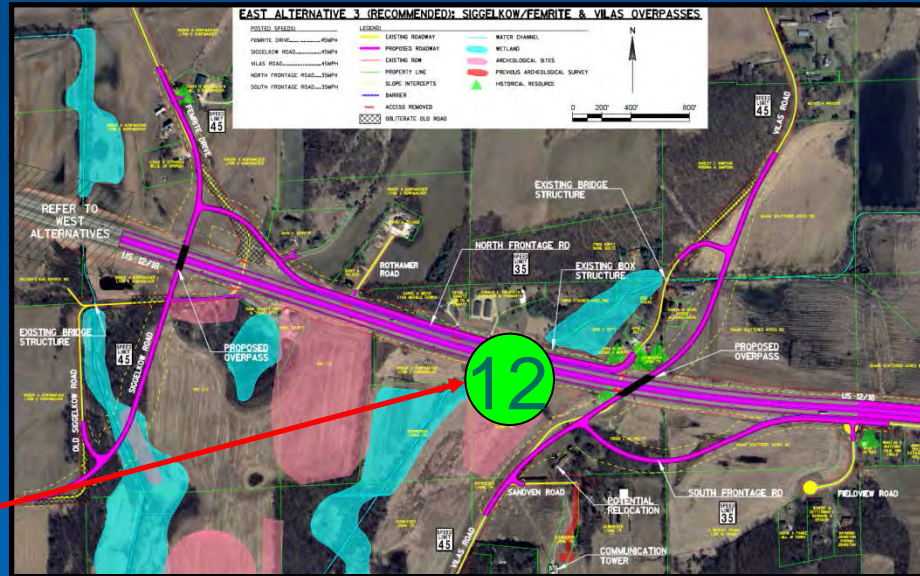
Questions?



Public Input "Dot" Exercise

STEP 1 - Place number on the map

STEP 2 - Place corresponding number on form and write comment



Project Comments: _____

Division of Transportation
System Development
Southern Region Office
2101 Wright Street
Madison, WI 53704

39/90
IMPROVING
a gateway to Wisconsin

Comment Sheet
Project ID: 3080-10-01
I-39/90 Project North Segment
Public Information Meeting
November 19, 2013

From: (Please Print) _____
To: _____

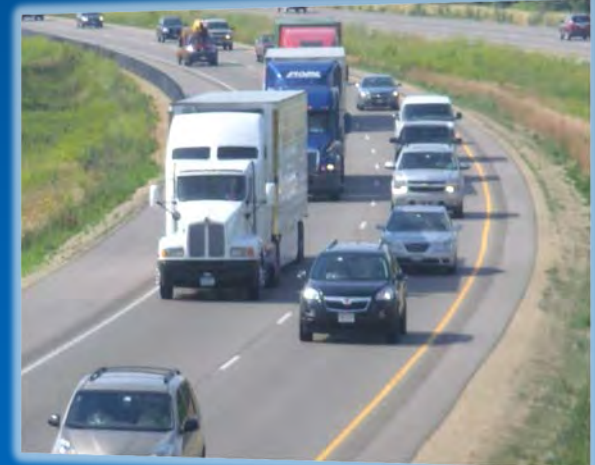
Name: _____
Address: _____
City: _____
State: _____
Zip: _____
Phone Number: _____
Email: _____

Craig Pringle, P.E.
WisDOT Project Manager
North Segment
2101 Wright Street
Madison, WI 53704

Project Comments: _____

Comments to improve future meetings: _____

US 12/18 Freeway Conversion Study



Public Information Meeting #3

November 19, 2013, 5:00 p.m.

McFarland High School

