

US Highway 12 Corridor Study

WisDOT & KL Engineering

October 22, 2014

River Arts Center, Sauk City



Overview of presentation

- ▶ Introduce Study Team
- ▶ Discuss History of Work on Study
- ▶ Discuss Current Status of Study
- ▶ Answer Questions



Project Team

- ▶ WisDOT—SW Region—Madison
 - Tom Koprowski—Study Manager
 - Michelle Brokaw—Study Engineer
- ▶ KL Engineering—Madison
 - Gerry Schmitt—Consultant Project Manager
 - Lance Williston—Consultant Engineer
- ▶ Strand Associates—Madison
 - Luke Holman—Traffic Engineer



Compare

▶ Study

- No design/construction \$ allocated
- Screening level analysis of Environmental Impacts
- Concepts of changes needed
- Unknown number of years before actual construction begins

▶ Project

- Design/Construction \$ allocated
- Extensive Environmental Impact Documents Req'd
- Detailed plans and specifications of changes
- Several years before actual construction begins



On-going Non-related Transportation Studies/Projects

- ▶ WisDOT US 12 Freeway Conversion Study
 - WIS 19 West to Parmenter Interchange
 - Environmental Documentation
- ▶ WisDOT US 12 South Baraboo Bypass Project
 - Highway Expansion
 - Funded and Programmed
- ▶ WisDOT US 12/Phillips Blvd. Project
 - In Sauk City
 - Completed



On-going Non-related Transportation Studies/Projects

- ▶ Sauk Prairie Hospital
 - Right-In Only Access on US 12 between Sauk Prairie Rd and CTH PF



History

- ▶ **NORTH Segment**
 - Ski Hi Road to Wis 78
 - ~12 mile Expressway 2 & 4—lane rural and urban
 - Purpose
 - Preserve functionality & safety
 - Connections 2030 Backbone Connector Route
 - I90/94 Alternative Route
 - Alternatives to control/consolidate access points
 - Rural ~ control
 - Sauk City ~ consolidate



History

▶ **SOUTH** Segment

- Wis 78 to Wis 19 West
- ~9 mile Expressway 4—lane rural
- Purpose
 - Preserve functionality & safety
 - Concepts for Freeway Conversion
 - Interchange/Overpass locations
 - Frontage Road connections



History

- ▶ Phase I (Data Gathering): Completed
 - Compile Data
 - Identify Deficiencies
 - Public Involvement
 - PIM #1 April 2012
 - Agricultural Operations Survey January 2012



History

- ▶ Phase II (Reporting): nearing Completion
 - *Corridor Study Report*
 - *Summarize data gathering*
 - *Alternatives to extend useful life—North Segment*
 - *Concepts to Convert to Freeway—South Segment*
 - *Access Management Plan*
 - *Recommendations for access control/consolidation*
 - *Public Involvement Meeting #2 Today*

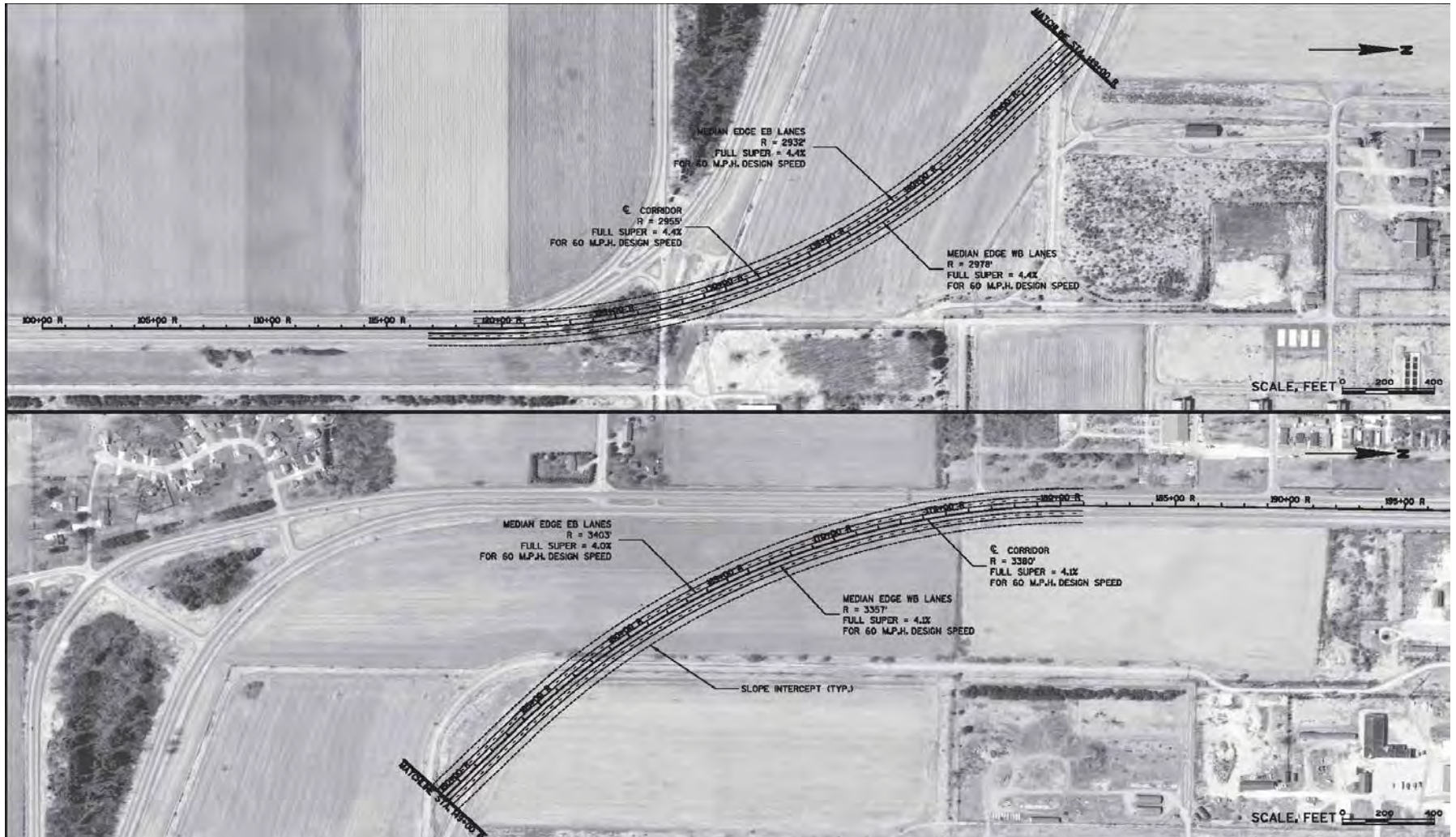


Current status

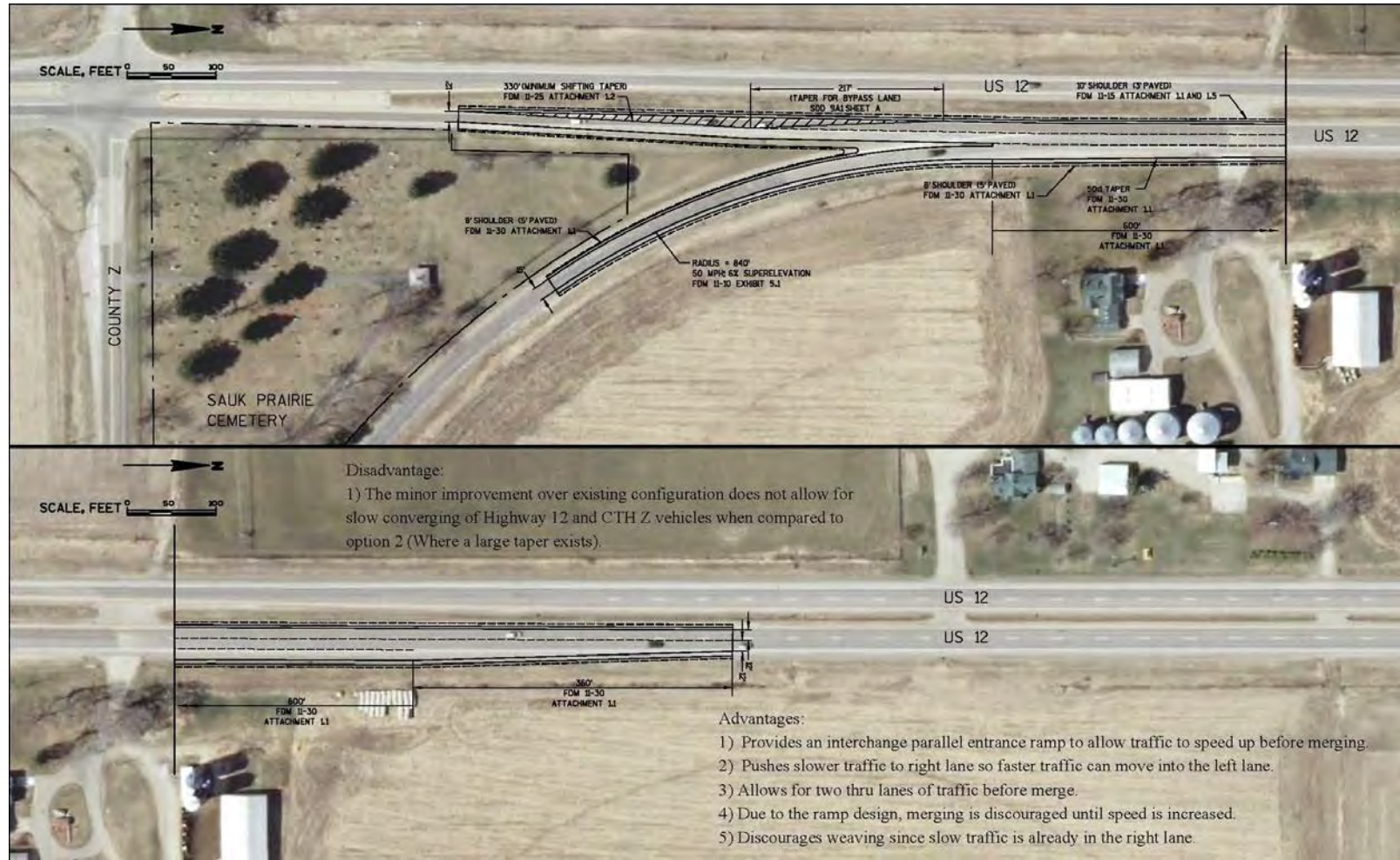
- ▶ **NORTH Segment Recommendations**
 - Groth Rd, North Rd, Armory View Rd & S. Access Rd → restrict or remove access to US 12
 - S-Curves @ Badger Army Ammunition Plant → re-align curves
 - Maple Park Rd/Old Bluff Trail → consolidate and re-align to CTH C
 - CTH Z → defined separation for merging NB traffic
 - Hwy PF → soften taper for SB left turn bay



CURVES SOUTH OF THE BADGER ARMY AMMUNITION PLANT IMPROVEMENTS



CTH Z IMPROVEMENTS



CTH PF IMPROVEMENTS

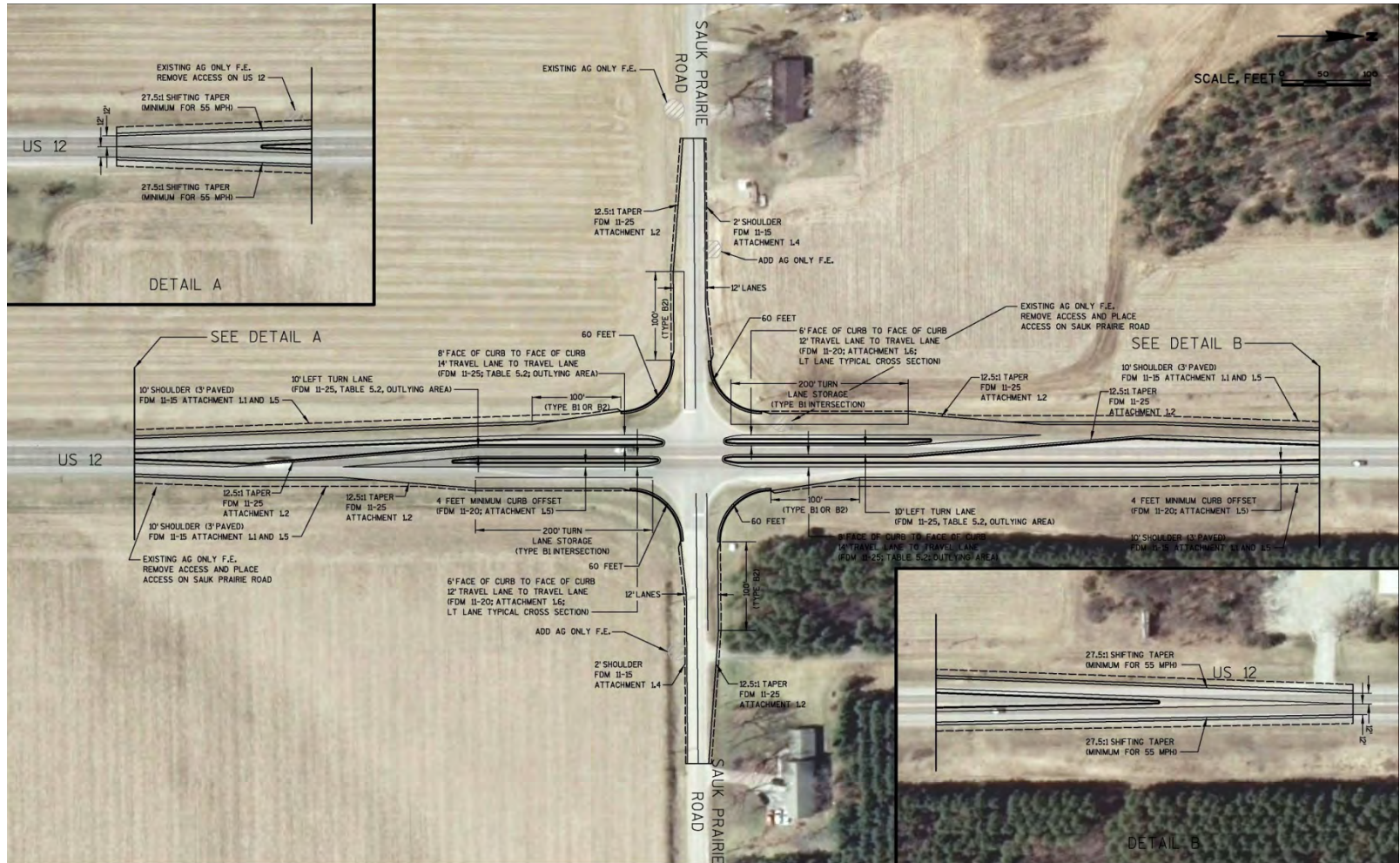


Current status

- ▶ **NORTH Segment Recommendations Continued**
 - Sauk Prairie Road → add separated left turn lanes (like Hwy PF)
 - WIS 60 → reconfigure intersection and driveways
 - Driveways & field entrances → consolidate/move to side roads or frontage roads as development continues. Do not allow new access points.
 - Multi-Modal → develop bike path between Devil's Lake and Sauk City/Prairie du Sac



SAUK PRAIRIE ROAD IMPROVEMENTS



HWY 60 INTERSECTION IMPROVEMENTS

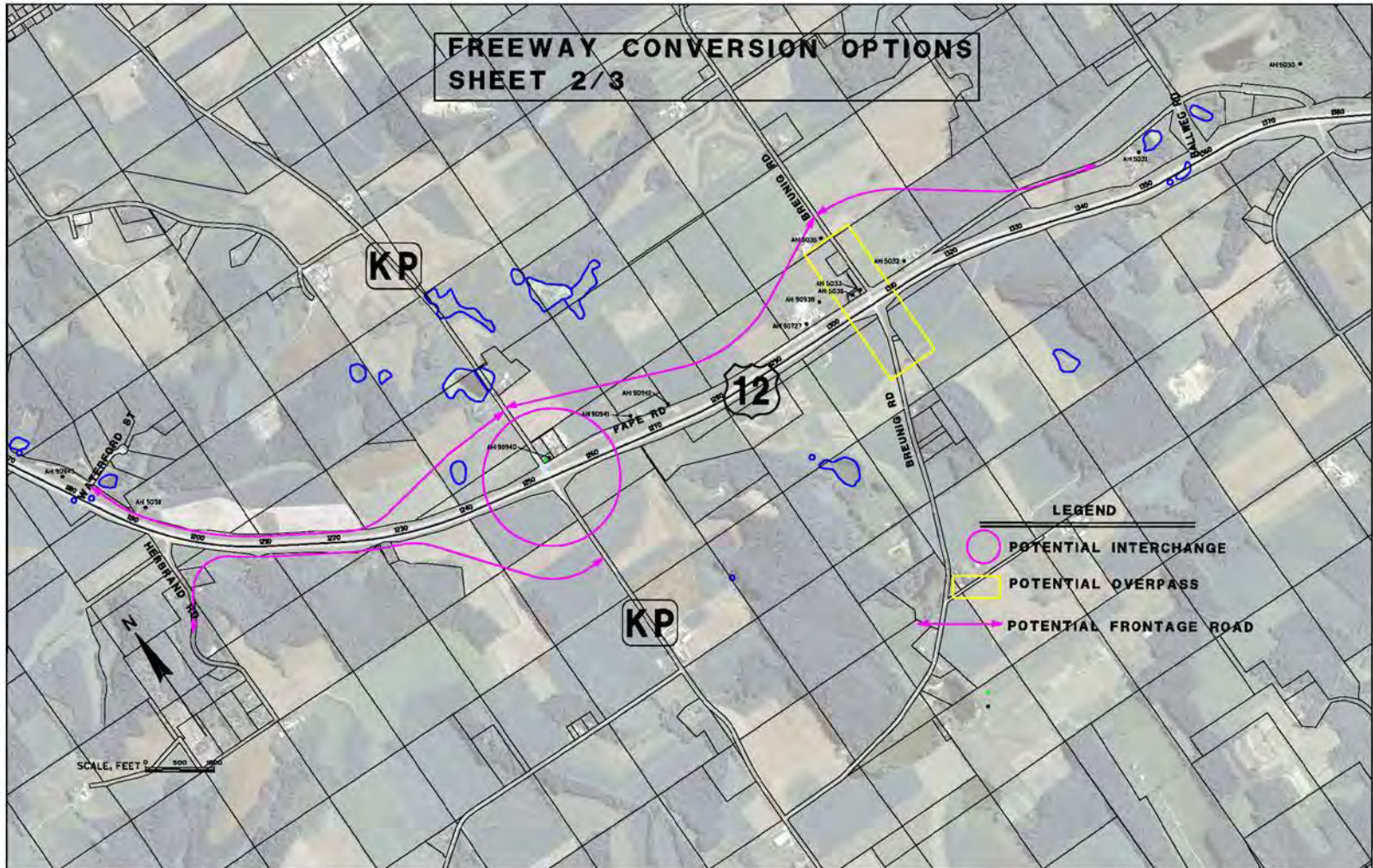


Current status

- ▶ **SOUTH** Segment Recommendations
 - All Intersections → lengthen acceleration lanes & improve pavement markings
 - Interchanges
 - Hwy 188
 - Hwy KP
 - Overpasses
 - Hwy Y
 - Breunig Road
 - Simpson Road



FREEWAY CONVERSION CONCEPTS



Current status

- ▶ **SOUTH** Segment Recommendations Continued
 - Frontage Roads
 - Old Hwy 12
 - New locations
 - Driveways → do not allow new access points
 - Multi-Modal
 - Complete Dane Cty Hwy 12 Path
 - Maintain snowmobile crossings
 - Project to Expand Hwy 188 Park-n-Ride



Benefits

- ▶ Clearinghouse of existing conditions
 - Traffic volumes
 - Crash Rates
 - Environmental
 - Geometric Deficiencies
- ▶ Guide for future planning or decision making
 - Access points
 - Intersection upgrades
 - Bridge and Frontage Road locations



Additional information

- ▶ Project Schedules ~ year construction to start
 - Wis 60 Intersection improvements ~ 2015
 - S-Curves re-alignment @ Badger Army Ammunition Plant ~ 2018
 - US 12 (Ski Hi Rd to the north) reconstruction ~ 2016
 - Hwy 188 Park-n-Ride expansion ~ 2016 or 2017



Next steps

- ▶ Review & address today's meeting comments.
- ▶ Finalize project reports by the end of 2014
 - *Corridor Study Report*
 - *Access Management Plan*



Contacts and resources

▶ Project Contacts:

- Tom Koprowski, WisDOT Project Manager

(608) 246-3869

Thomas.Koprowski@dot.wi.gov

- Gerry Schmitt, KL Engineering Project Manager

(608) 663-1218

gschmitt@klengineering.com

▶ Project website:

<http://www1.wisconsindot.gov/Pages/projects/by-region/sw/12skihi19/default.aspx>



Questions?



Thank-you!

