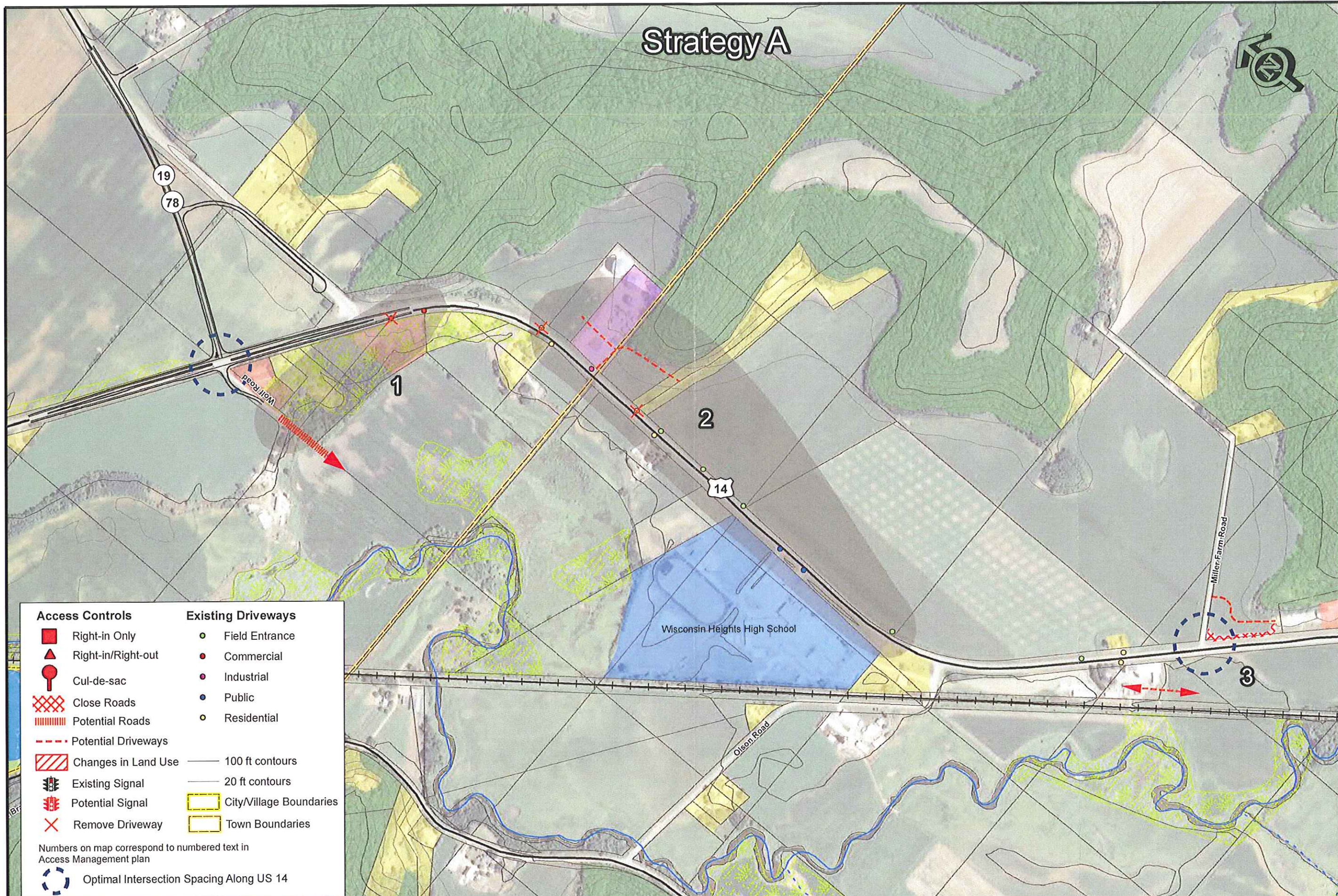


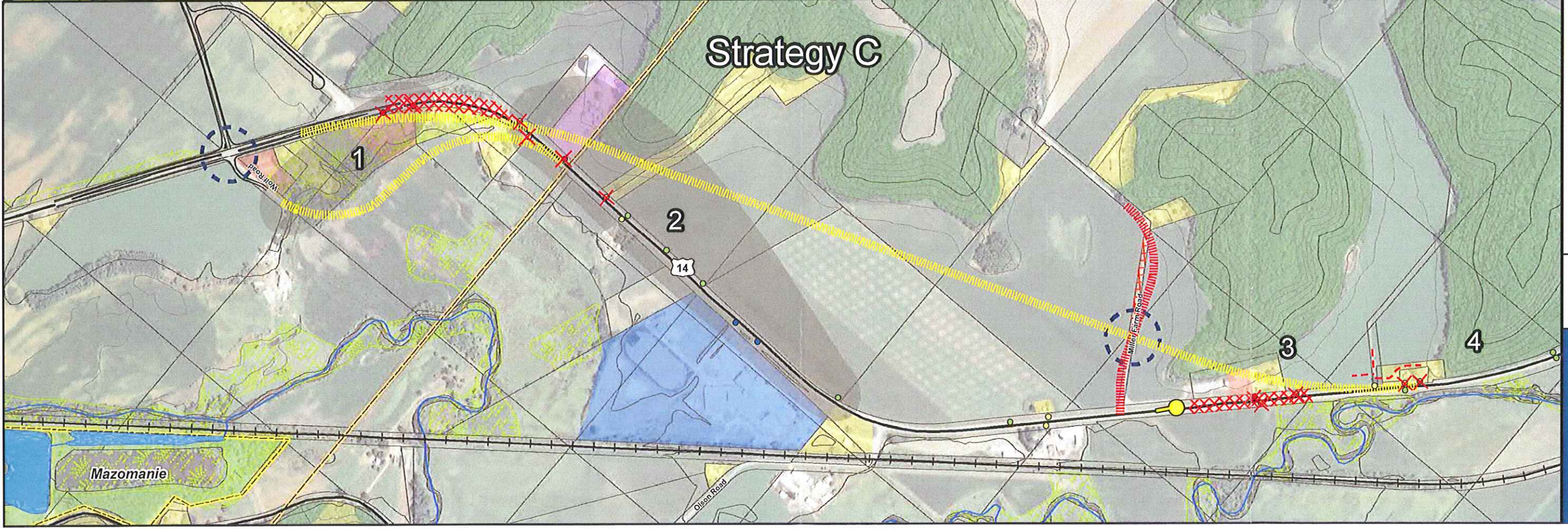
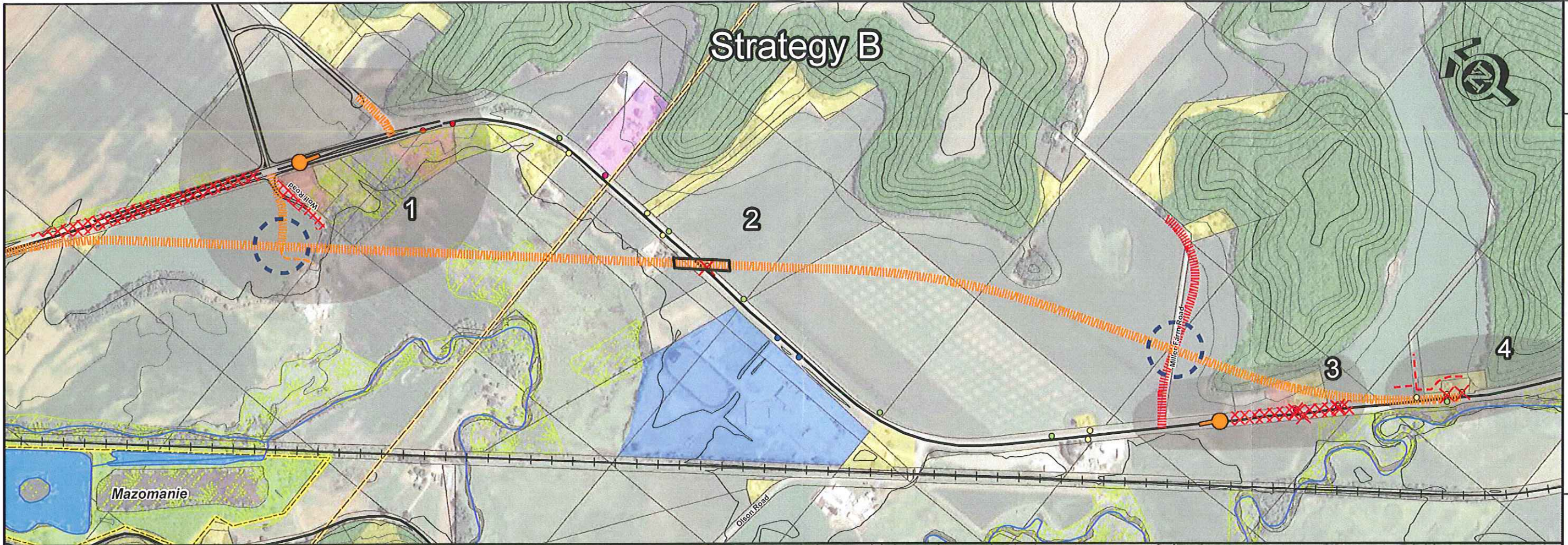
Strategy A

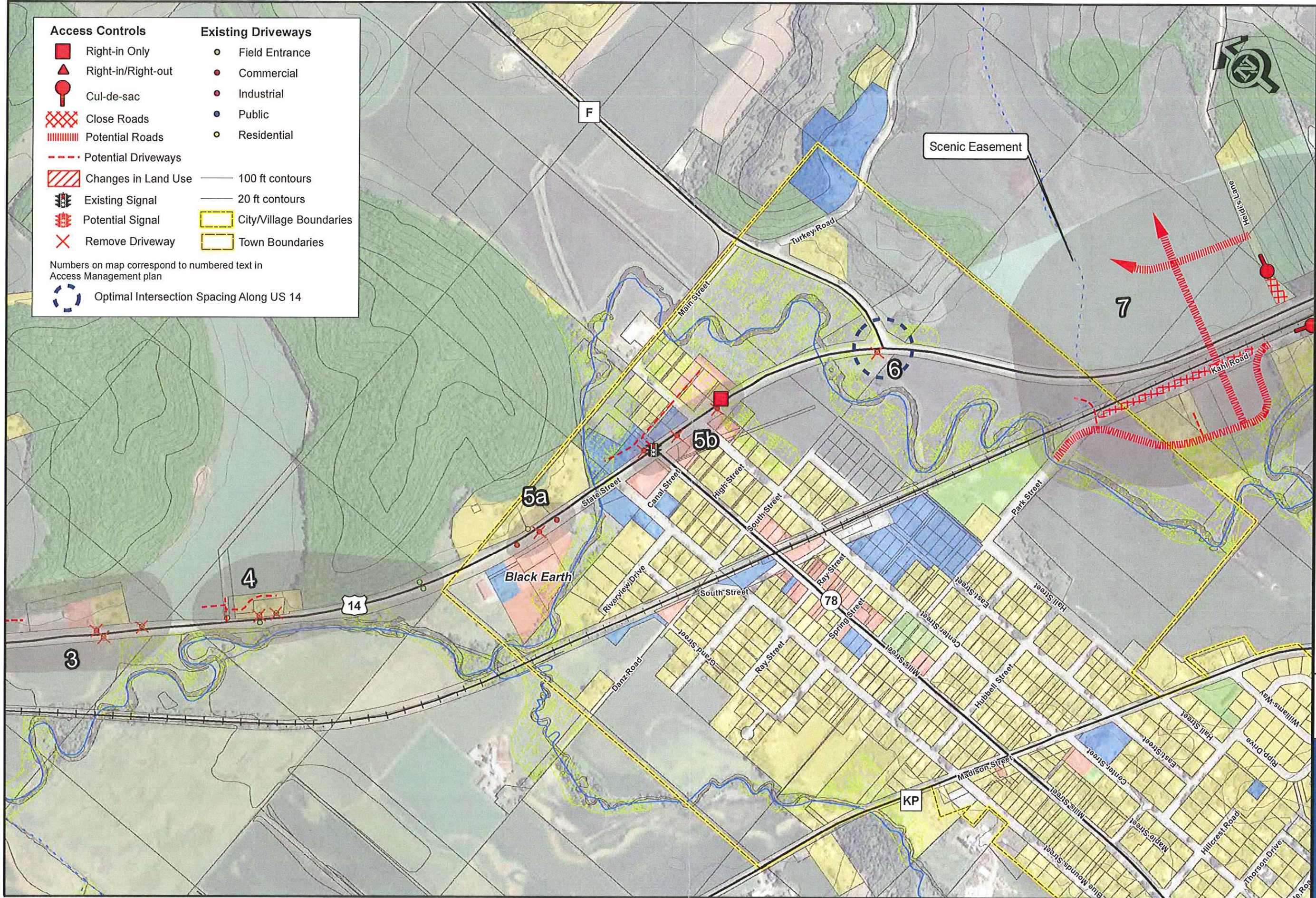


Access Controls	Existing Driveways
Right-in Only	Field Entrance
Right-in/Right-out	Commercial
Cul-de-sac	Industrial
Close Roads	Public
Potential Roads	Residential
Potential Driveways	100 ft contours
Changes in Land Use	20 ft contours
Existing Signal	City/Village Boundaries
Potential Signal	Town Boundaries
Remove Driveway	

Numbers on map correspond to numbered text in Access Management plan

Optimal Intersection Spacing Along US 14

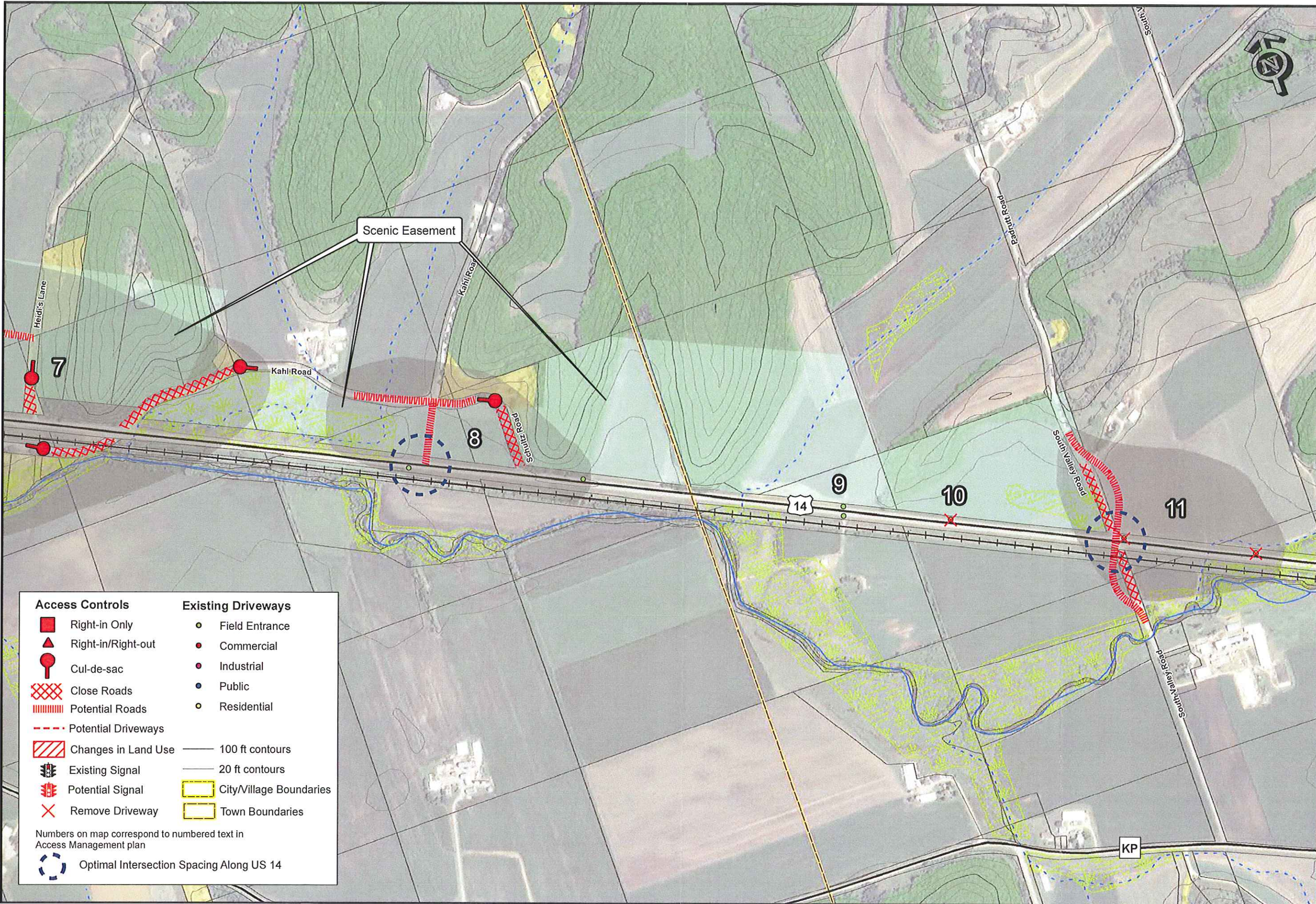




Access Controls	Existing Driveways
Right-in Only	Field Entrance
Right-in/Right-out	Commercial
Cul-de-sac	Industrial
Close Roads	Public
Potential Roads	Residential
Potential Driveways	100 ft contours
Changes in Land Use	20 ft contours
Existing Signal	City/Village Boundaries
Potential Signal	Town Boundaries
Remove Driveway	

Numbers on map correspond to numbered text in Access Management plan

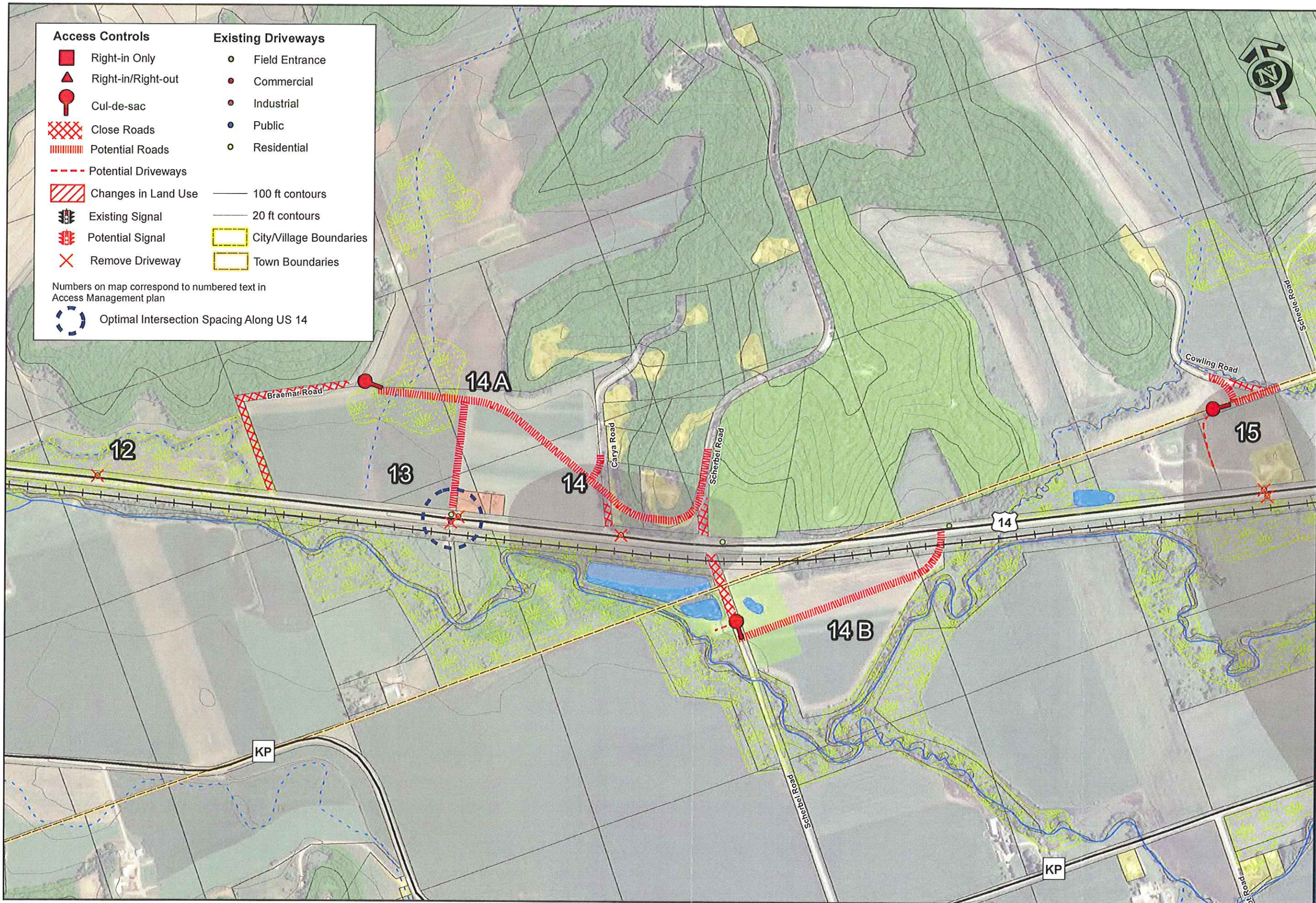
Optimal Intersection Spacing Along US 14

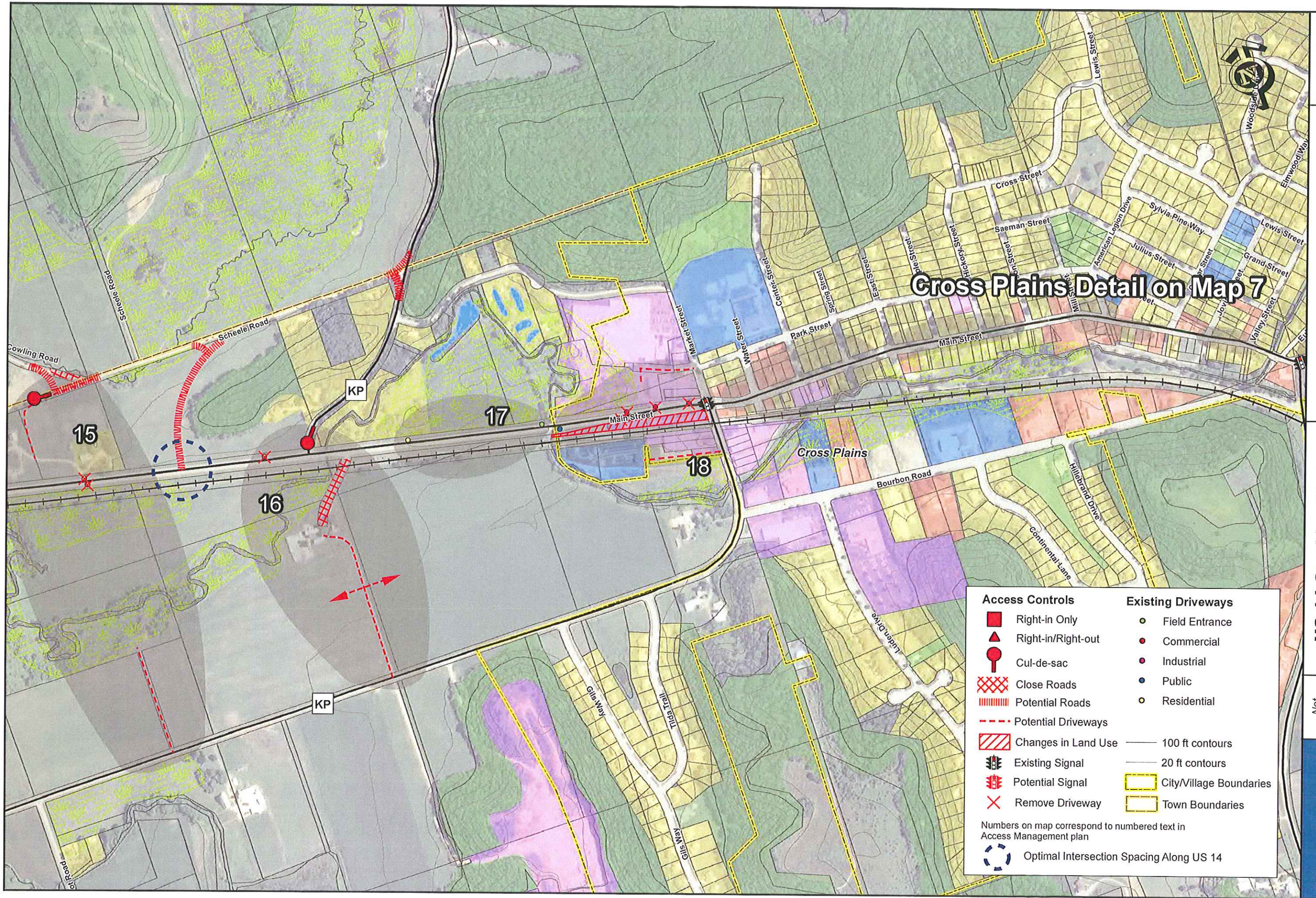


Access Controls		Existing Driveways	
	Right-in Only		Field Entrance
	Right-in/Right-out		Commercial
	Cul-de-sac		Industrial
	Close Roads		Public
	Potential Roads		Residential
	Potential Driveways		100 ft contours
	Changes in Land Use		20 ft contours
	Existing Signal		City/Village Boundaries
	Potential Signal		Town Boundaries
	Remove Driveway		

Numbers on map correspond to numbered text in Access Management plan

Optimal Intersection Spacing Along US 14



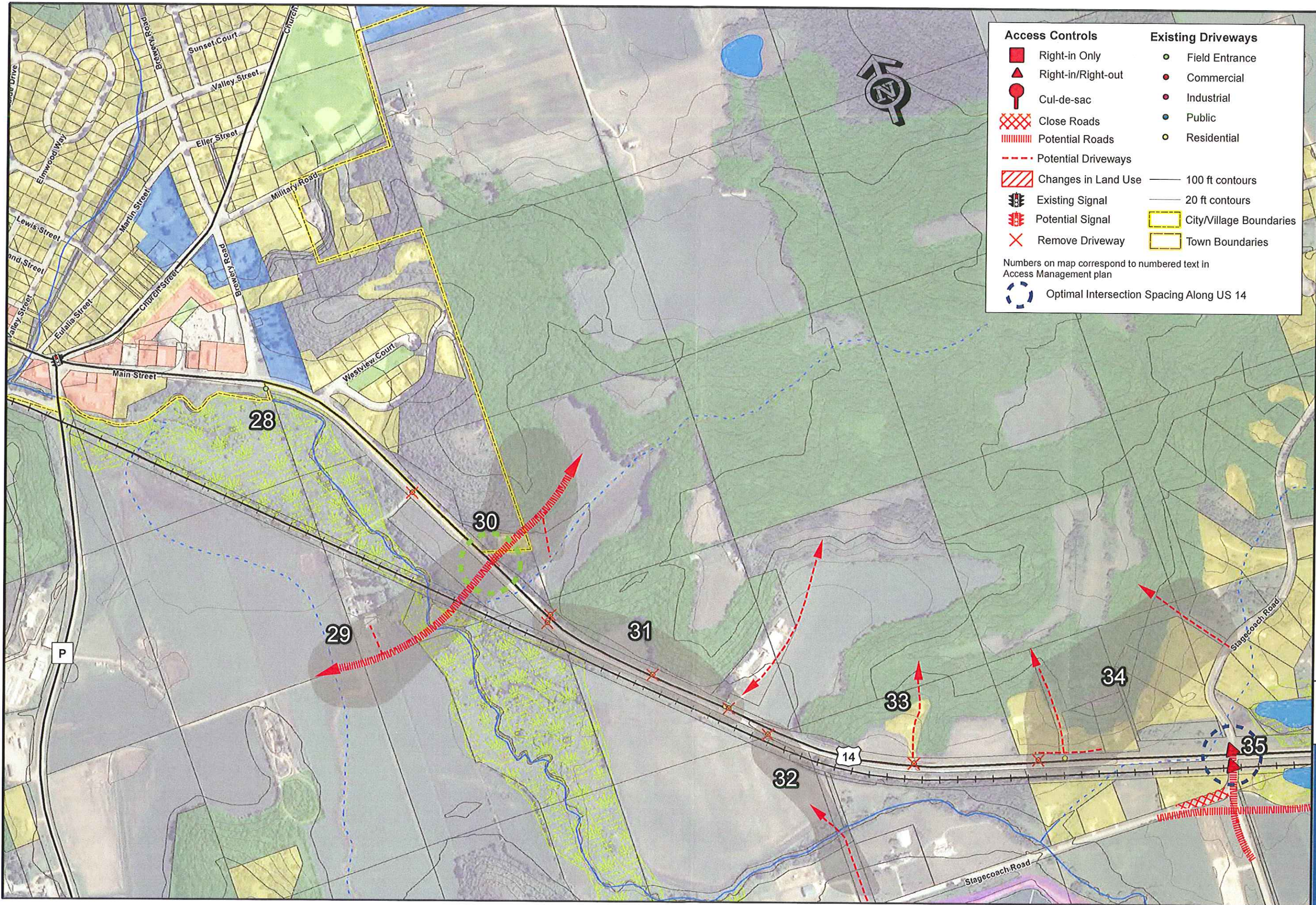


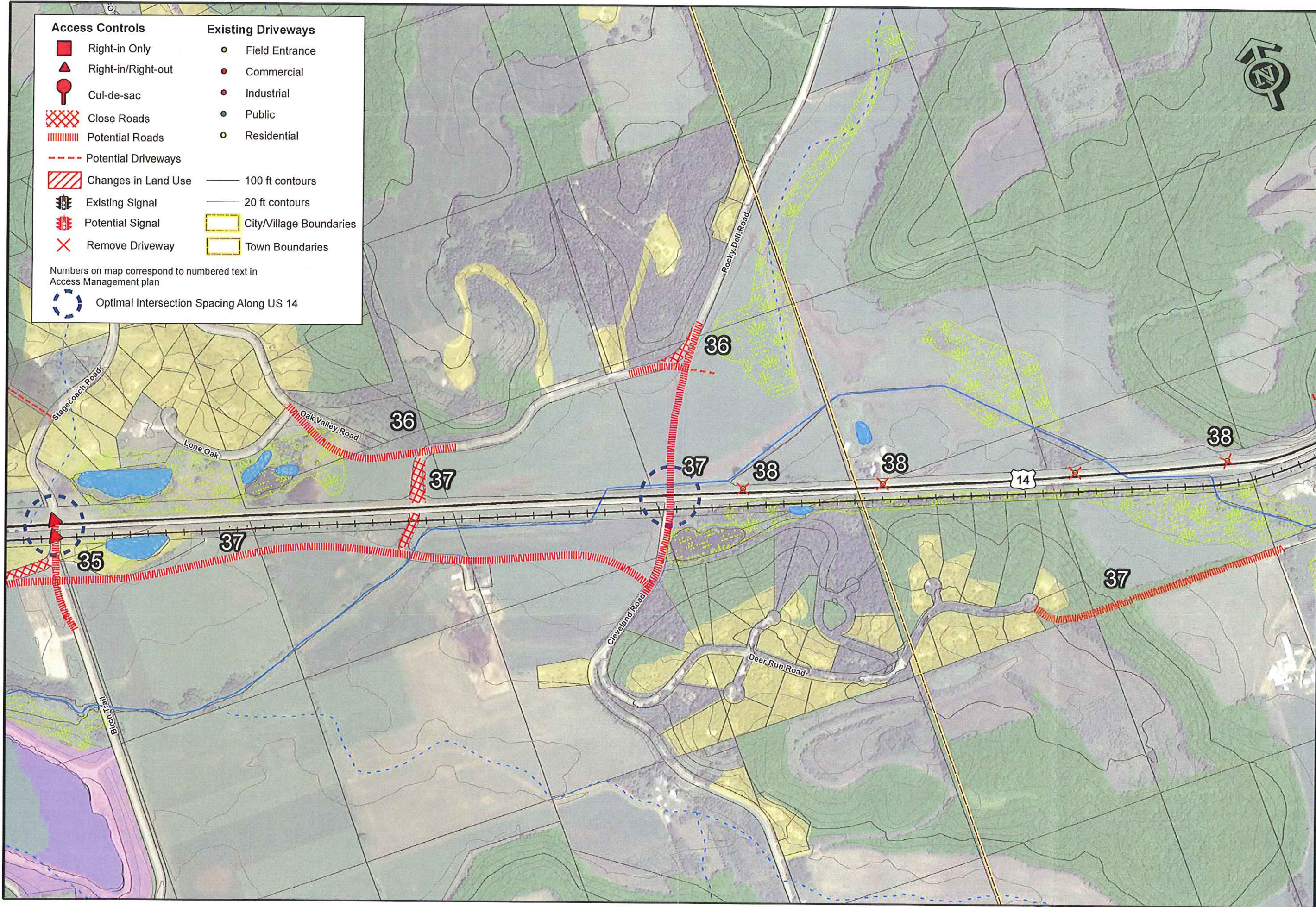


Access Controls	Existing Driveways
Right-in Only	Field Entrance
Right-in/Right-out	Commercial
Cul-de-sac	Industrial
Close Roads	Public
Potential Roads	Residential
Potential Driveways	100 ft contours
Changes in Land Use	20 ft contours
Existing Signal	City/Village Boundaries
Potential Signal	Town Boundaries
Remove Driveway	

Numbers on map correspond to numbered text in Access Management plan

Optimal Intersection Spacing Along US 14

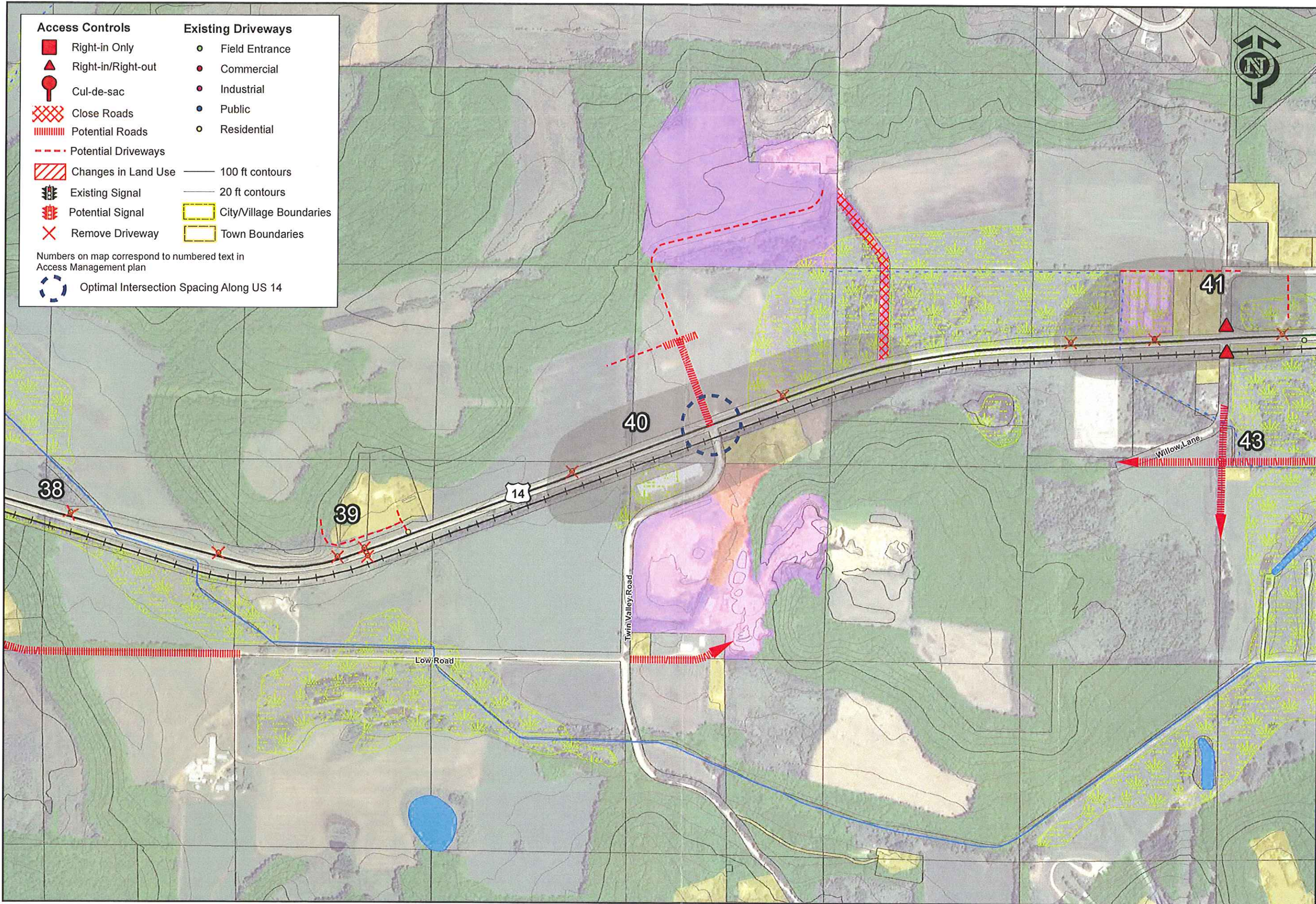




Access Controls		Existing Driveways	
	Right-in Only		Field Entrance
	Right-in/Right-out		Commercial
	Cul-de-sac		Industrial
	Close Roads		Public
	Potential Roads		Residential
	Potential Driveways		100 ft contours
	Changes in Land Use		20 ft contours
	Existing Signal		City/Village Boundaries
	Potential Signal		Town Boundaries
	Remove Driveway		

Numbers on map correspond to numbered text in Access Management plan

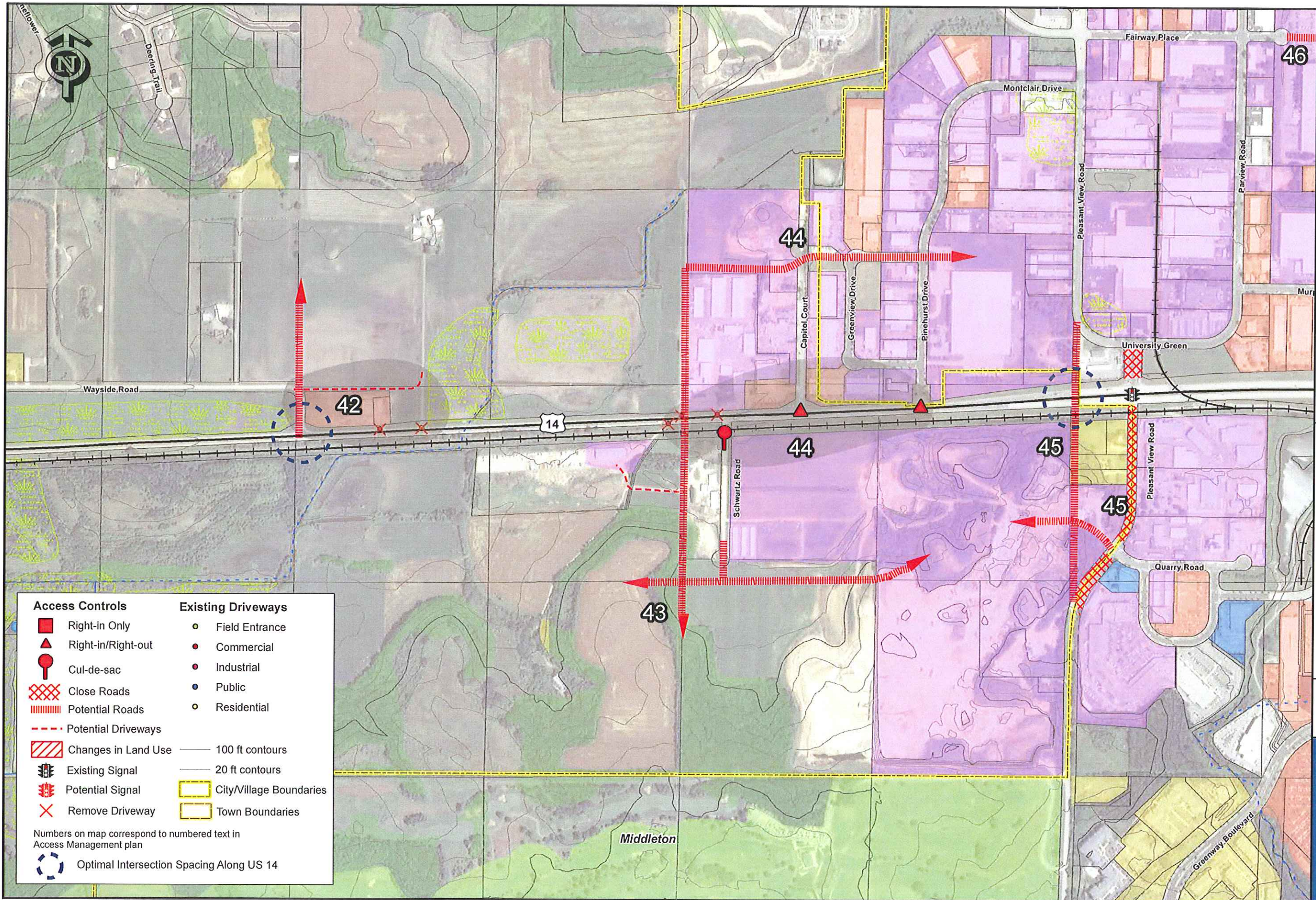
Optimal Intersection Spacing Along US 14



Access Controls		Existing Driveways	
	Right-in Only		Field Entrance
	Right-in/Right-out		Commercial
	Cul-de-sac		Industrial
	Close Roads		Public
	Potential Roads		Residential
	Potential Driveways		100 ft contours
	Changes in Land Use		20 ft contours
	Existing Signal		City/Village Boundaries
	Potential Signal		Town Boundaries
	Remove Driveway		

Numbers on map correspond to numbered text in Access Management plan

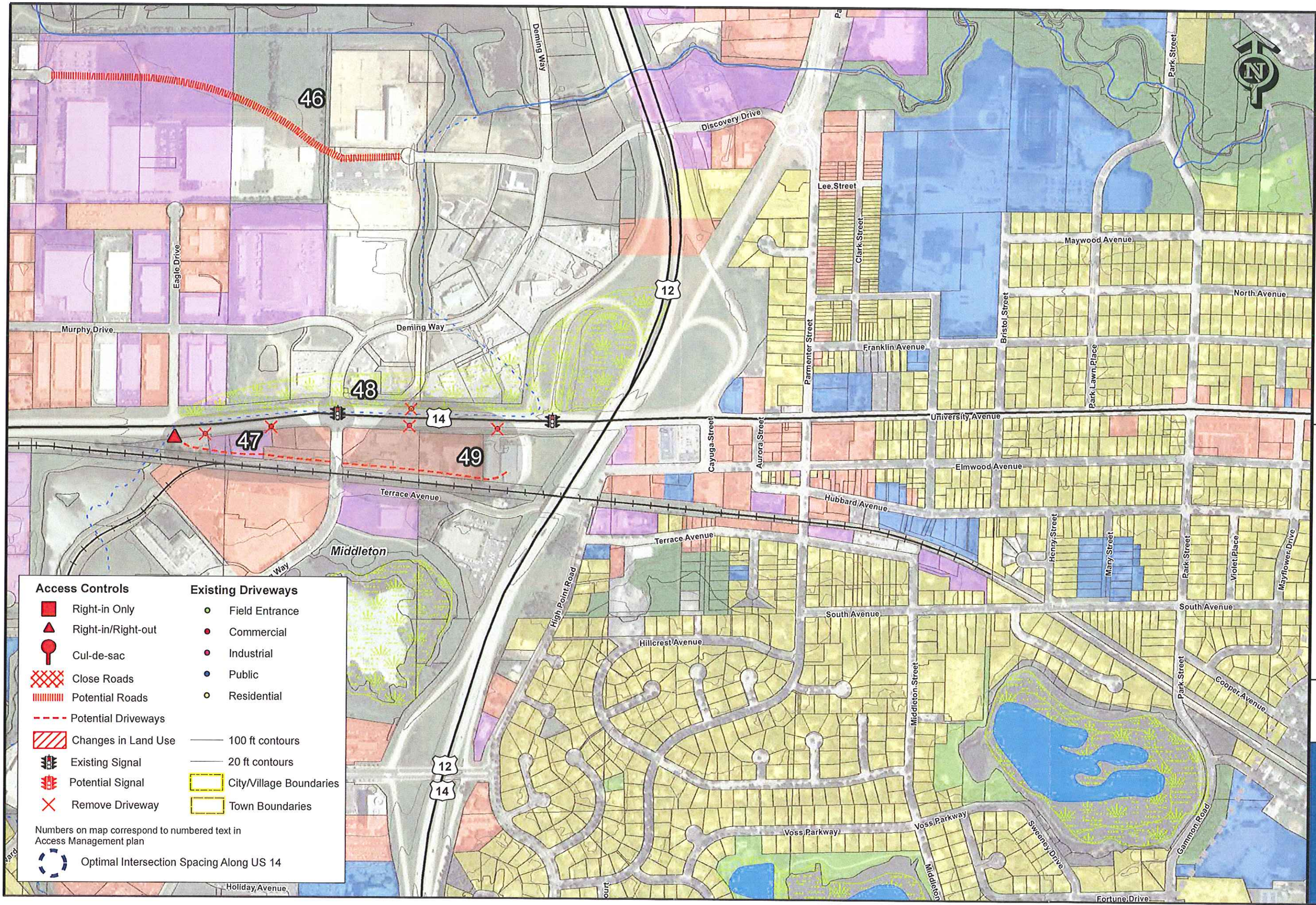
Optimal Intersection Spacing Along US 14



Access Controls	Existing Driveways
Right-in Only	Field Entrance
Right-in/Right-out	Commercial
Cul-de-sac	Industrial
Close Roads	Public
Potential Roads	Residential
Potential Driveways	100 ft contours
Changes in Land Use	20 ft contours
Existing Signal	City/Village Boundaries
Potential Signal	Town Boundaries
Remove Driveway	

Numbers on map correspond to numbered text in Access Management plan

Optimal Intersection Spacing Along US 14



Access Controls		Existing Driveways	
	Right-in Only		Field Entrance
	Right-in/Right-out		Commercial
	Cul-de-sac		Industrial
	Close Roads		Public
	Potential Roads		Residential
	Potential Driveways		100 ft contours
	Changes in Land Use		20 ft contours
	Existing Signal		City/Village Boundaries
	Potential Signal		Town Boundaries
	Remove Driveway		
	Optimal Intersection Spacing Along US 14		

Numbers on map correspond to numbered text in Access Management plan