



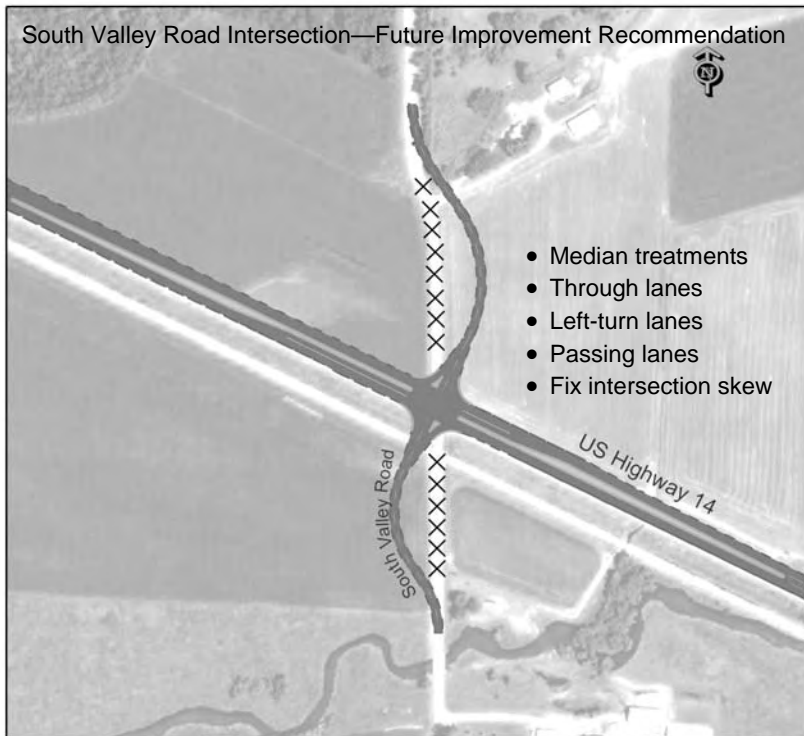
# US 14 Corridor Study (East)

## WIS 78 to US 12 (Mazomanie to Middleton)

### February 2010 Newsletter

## **WisDOT Concludes Corridor Study of US 14 (East)**

The Wisconsin Department of Transportation, Southwest Region is completing a planning study of the US14 corridor located between WIS 78 in Mazomanie and US 12 in Middleton, Dane County.



The study examined the existing environmental, social, and transportation related issues along US 14 and developed draft strategies and recommendations to improve operations and safety within the corridor. The strategies focus on preserving the functional life of the existing two-lane highway for as long as possible. The image above (improvement to the intersection at South Valley Road) shows an example of a recommendation that could be implemented as needed.

Within the study area, the greatest concerns for WisDOT are the existing at-grade intersections along US 14. As traffic increases over time it will become increasingly difficult to turn onto or off of US 14 and to cross it from connecting roads and driveways in a safe manner. For this reason, access management recommendations have also been proposed. Access management includes limiting intersections with the highway and consolidation of existing driveways as needed to improve safety.

The scope of this study did not include capacity expansion or bypass alternatives, although other local circulation enhancements have been explored by local communities.

**For additional information, please contact:**

### **Tom Koprowski**

WisDOT Project Manager  
WisDOT Southwest Region  
2101 Wright Street  
Madison, WI 53704

Phone: (608) 246-3869  
thomas.koprowski@dot.state.wi.us

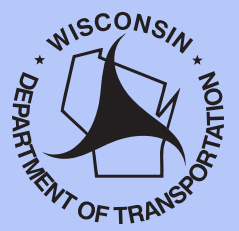
### **Manfred Enburg**

Consultant Project Manager  
TranSmart Technologies, Inc.  
2802 Coho Street, Suite 102  
Madison, WI 53713

Phone: (608) 268-3924  
menburg@trafficonline.com



If you know anyone who may be interested in this study, please share this newsletter with them. For additional copies or to be added to the mailing list please contact the WisDOT Project Manager.



# US 14 Corridor Study (East) WIS 78 to US 12 (Mazomanie to Middleton)

## ***Public Information Meeting — March 9, 2010***

Please join us on Tuesday, March 9th for the US 14 Corridor Study (East) Public Information Meeting. This will be the final public meeting for this study. A presentation will be given at 6:00, followed by an open house session for the remainder of the meeting.

In addition to presenting study findings and proposals, a major goal of the meeting is to gather input from members of the public who live, work and travel the US 14 corridor on a daily basis. Exhibits of study area concepts and recommendations will be displayed for public review. Study staff from the Wisconsin Department of Transportation and TranSmart Technologies, Inc. will be available to answer your questions and record your comments.

*Public Information Meeting — March 9, 2010  
6:00 p.m. — 8:00 p.m. (6:00 p.m. presentation)*

Where: Wisconsin Heights High School  
10173 Hwy 14, Mazomanie

**Wisconsin Department of Transportation**  
WisDOT Southwest Region  
2101 Wright Street  
Madison, WI 53704

