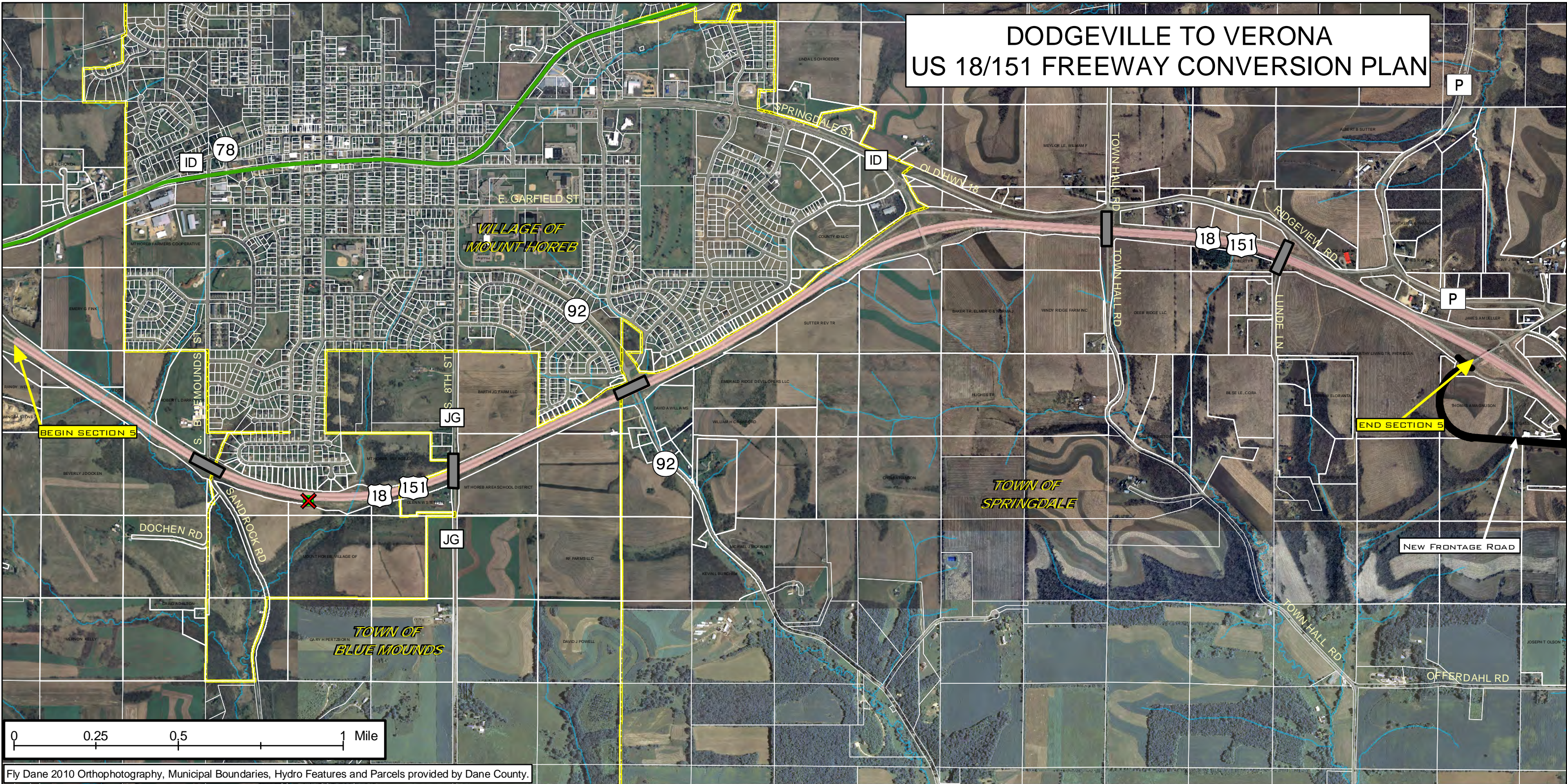


# DODGEVILLE TO VERONA US 18/151 FREEWAY CONVERSION PLAN



Fly Dane 2010 Orthophotography, Municipal Boundaries, Hydro Features and Parcels provided by Dane County.

Legend	
	Municipal Boundary
	Interchange/Overpass Concept
	New Driveway
	Potential Grade Separation
	New Local Road
	Improve Existing Local Road
	Existing Grade Separation to Remain
	Dead-end/cul-de-sac
	Access Removal
	Existing Driveway
	Wetlands
	Military Ridge State Trail
	No Change Proposed
	Realignment Possible

**Section 5**  
**WIS 78 to County P**  
**No Changes To Existing Conditions**  
**as of 7/1/11**

