

Project 5145-00-01/71

WIS 78 to US 12

WIS 19

Dane County

Public Hearing

December 10th, 2019



Welcome and Opening Remarks

Todd Matheson, PE

WisDOT Project Development Chief

William Strobel, PE

WisDOT Project Development Supervisor

Lalitha Balachandran, PE

WisDOT Project Manager

Greg Payne, PE

WisDOT Project Leader

Jeremy Rach

WisDOT Design Engineer

Welcome and Opening Remarks

John Fandrich

WisDOT Real Estate Specialist

Brian Taylor

WisDOT Environmental Coordinator

Gail Klein

UW-Milwaukee Architectural Historian

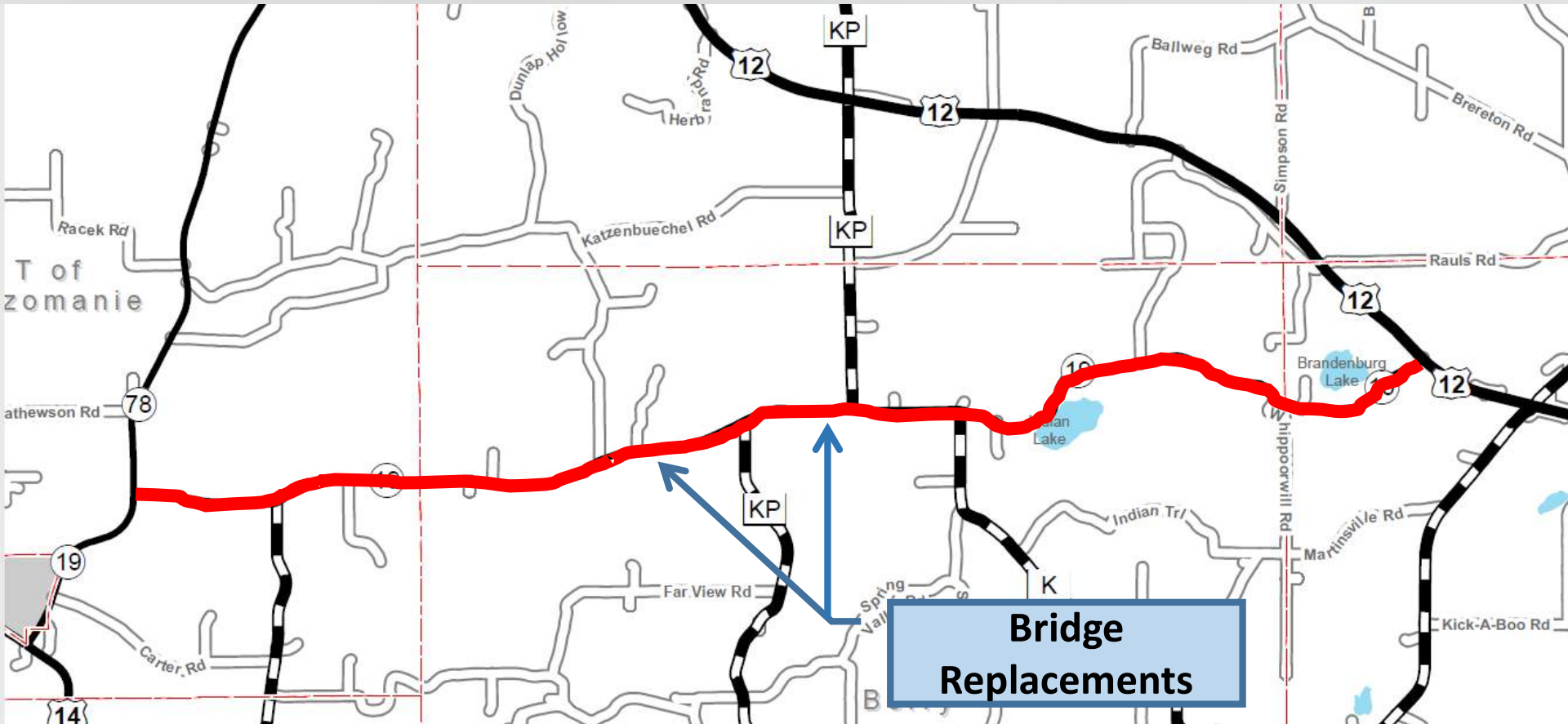
Norman Meinholz

Wisconsin Historical Society Archeologist

Agenda

- **Project Location**
- **Purpose, Project Statement, and Needs**
- **Recent Activities**
- **Design Overview**
- **Upcoming Schedule**
- **Questions**

Project Location



Purpose & Project Statement

- **Address the existing roadway deficiencies and safety issues as well as address bridge structures that have exceeded their service life**

Needs

- **Safety Concerns**
 - **Blind curves**
 - **Narrow shoulder width**
 - **Ditches are too steep**
- **Drainage Concerns**
 - **Several locations where the roadway overtops**
 - **Ditches that are not sized appropriately**
- **Deteriorating Pavement**
- **Bridges in need of replacement**

Needs

- **Safety Concerns**



Needs

- **Drainage Concerns**



Needs

- **Deteriorating Pavement**



Recent Activity

- **2018**
 - **Archaeology investigation completed**
 - **Several different surveys completed such as drainage, soil, and utilities**
 - **Held a public involvement meeting**
 - **Based on surveys and public comments we made design refinements**

- **2019**
 - **With the design refinements we shared this information with:**
 - **Department of Agriculture Trade and Consumer Protection (DATCP)**
 - **Agricultural Impact Statement (AIS)**
 - **Natural Resources Conservation Service (NRCS)**

Recent Activity

- **2019 (continued)**
 - **Section 106 review of Archeological/Historical information was approved by State Historical Preservation Officer**
 - **25 archaeology sites**
 - **6 properties eligible or registered on the national register of historic places**
 - **Signed Draft Environmental Report**
 - **Preliminary drainage analysis completed**
 - **Preliminary bridge design completed**
 - **Ongoing coordination with property owners who have reached out with questions or concerns design**
 - **Ongoing plan development**

Design Overview

■ Rehabilitation Project

- **40% Reconstruction**
 - **Targeted most deficient locations**
 - **Safety**
 - **Drainage**
- **60% Resurfacing**
 - **These segments still include widened shoulders and improved side slopes**

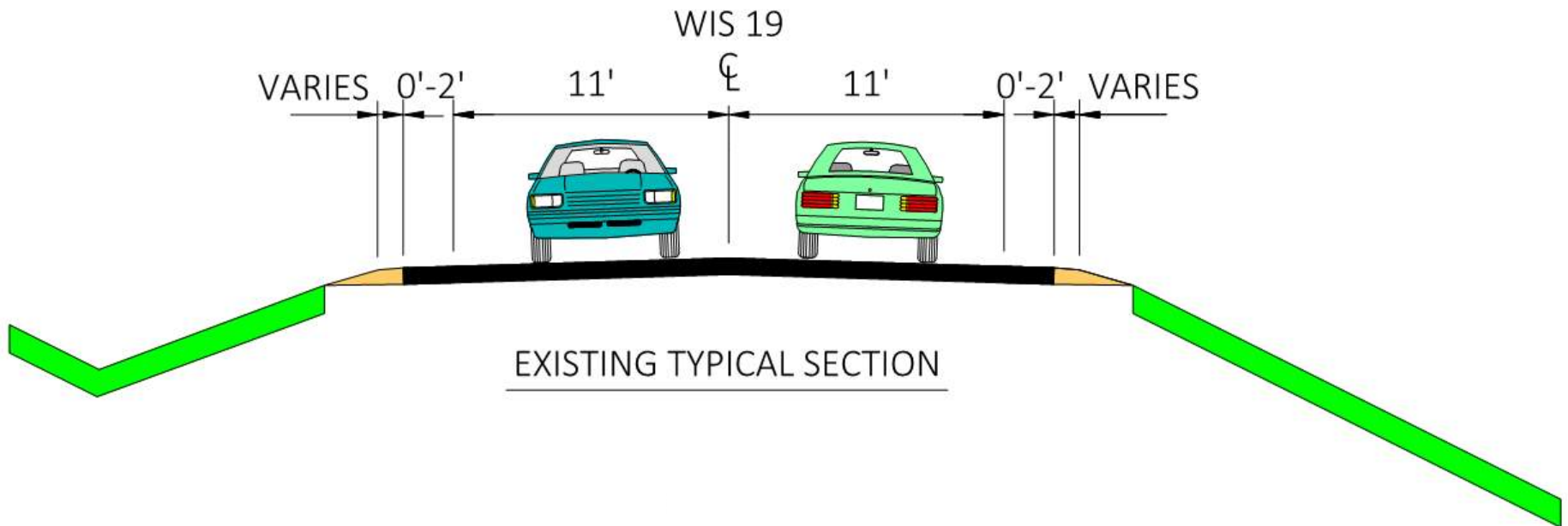
Design Overview

■ Benefits of Wider Shoulders

- Provides more space for farm equipment and other oversized loads
 - Increased safety for those deciding to pass these vehicles
- Increased safety for cars turning left or right
- Increased safety for bicyclists, and motorists
- Provides a safe area for broken down cars to pull over
- Provides a safe area for police to pull over speeding motorists

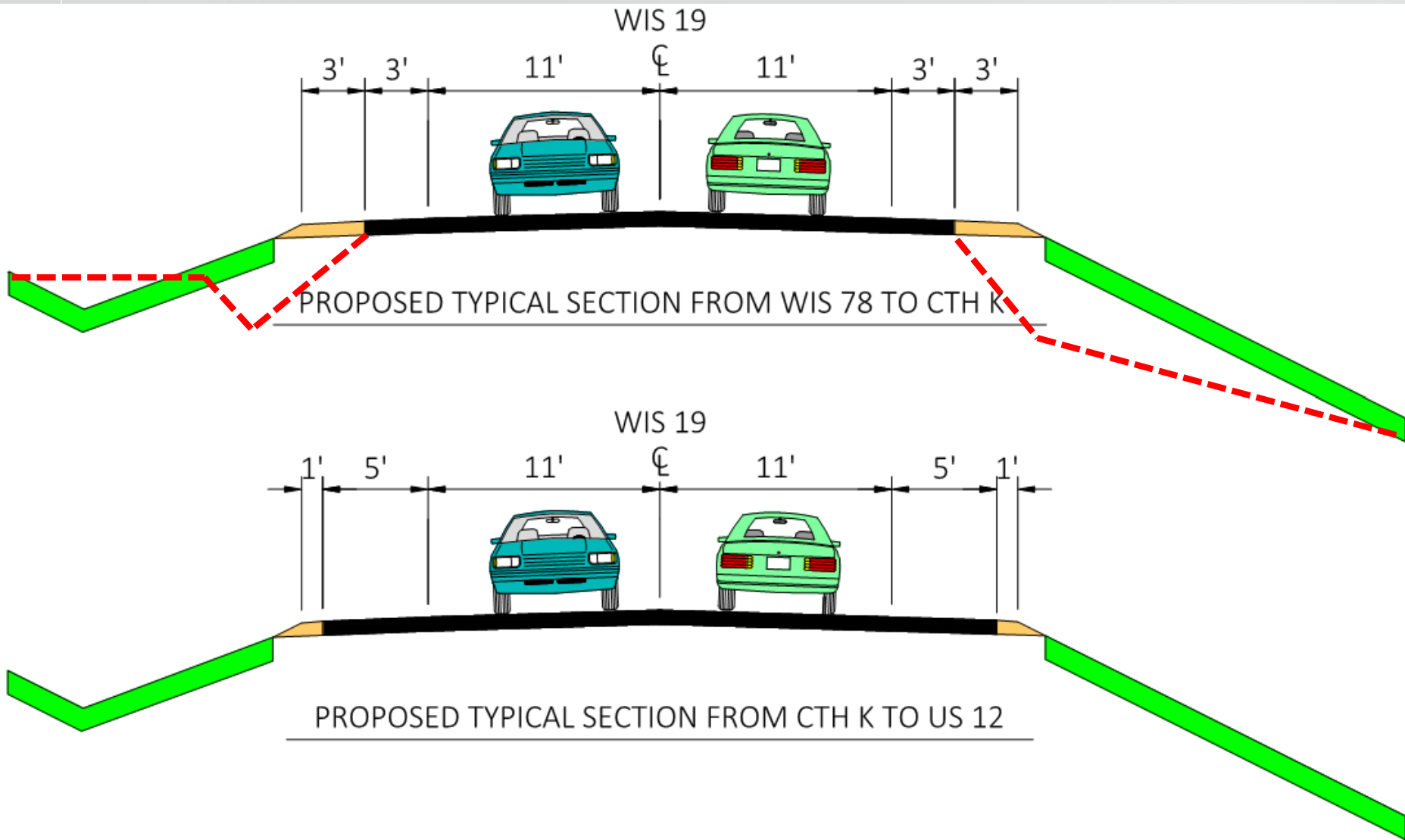
Design Overview

- Existing Typical Section



Design Overview

- Proposed Typical Section



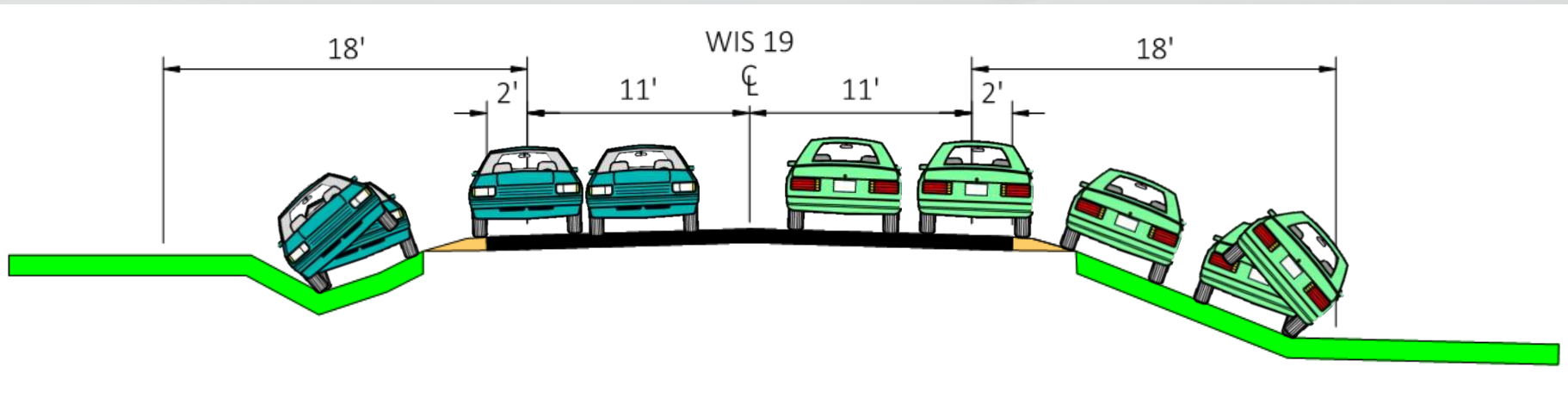
Design Overview

■ Side Slope Safety

- **Definition of Clear Zone:**
 - **Area where a vehicle leaving the road can travel without conflict**
 - **Examples of conflicts include steep slopes or objects such as trees**
 - **Relocate objects, make them breakaway, or shield them with guardrail or barrier wall**
- **Proposed Clear Zone of 18-feet**

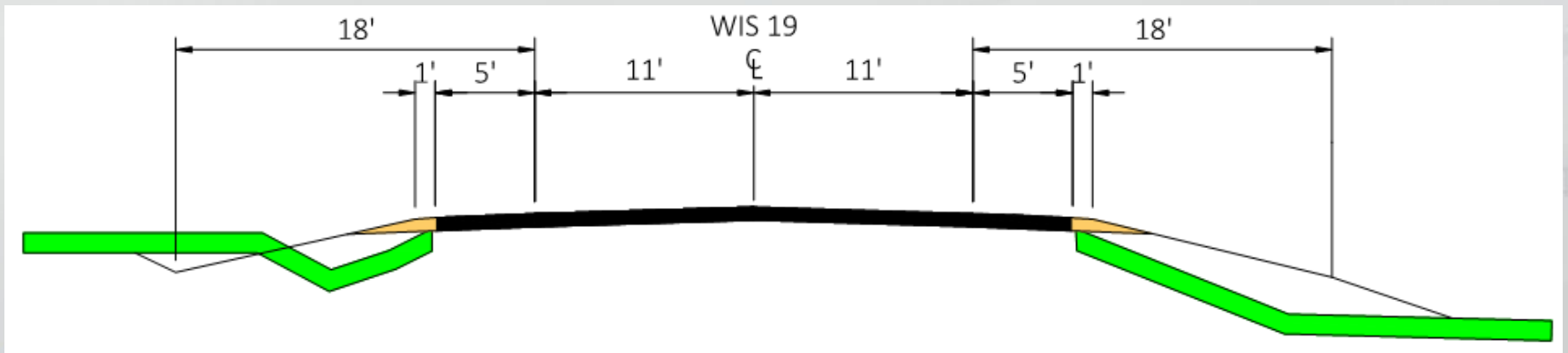
Design Overview

- Side Slope Safety
 - Existing Roadway Example



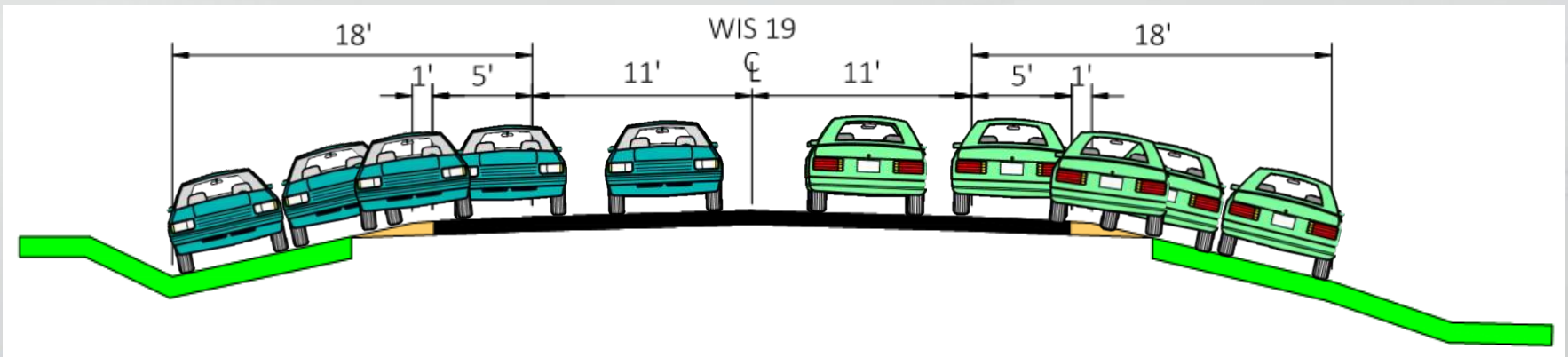
Design Overview

- Side Slope Safety
 - Existing Roadway Example



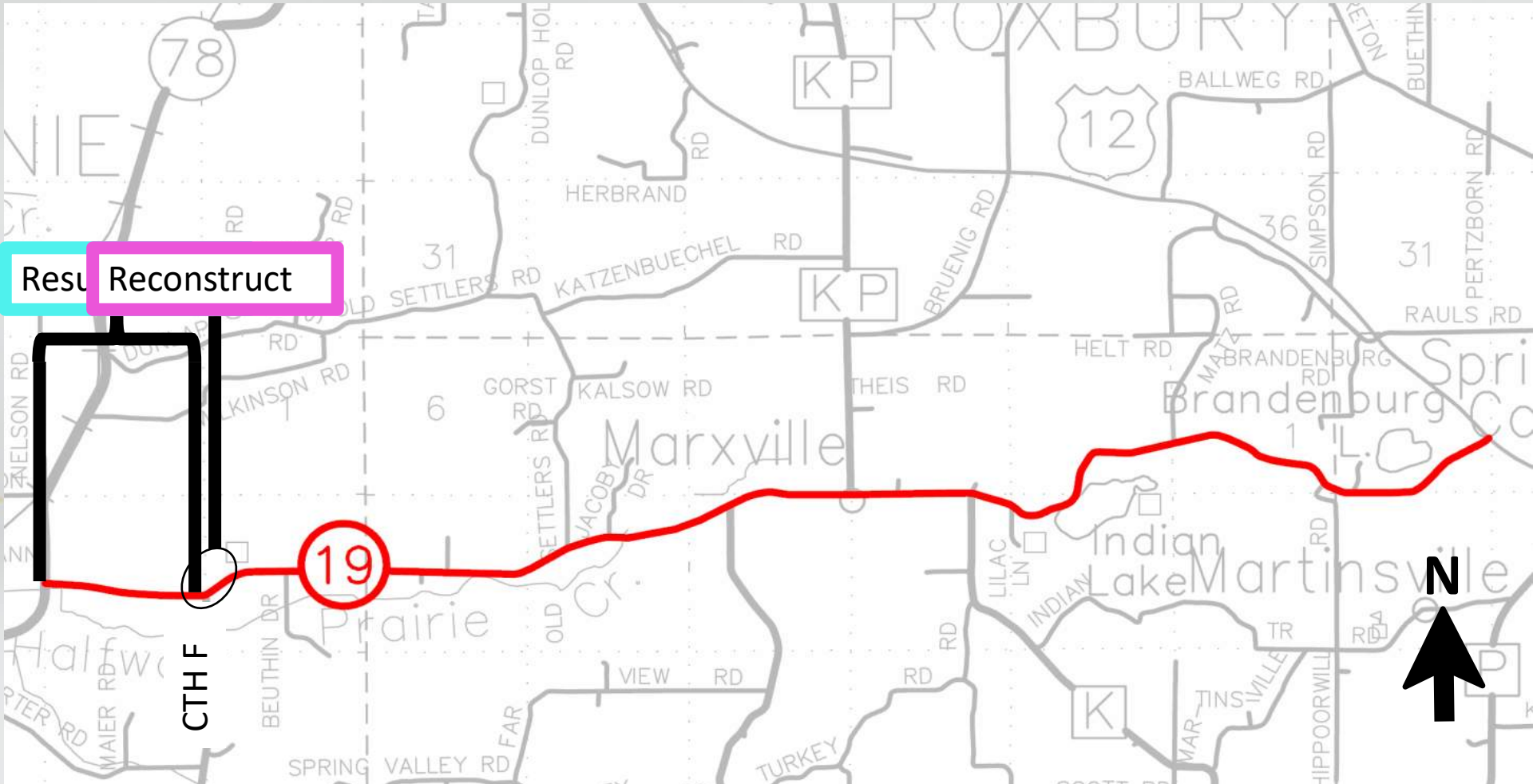
Design Overview

- Side Slope Safety
 - Proposed Roadway Example



Design Overview

- Project Overview



Design Overview



CTHF

SPRING VALLEY RD

TURKEY

SCOTT RD

HIGH



Design Overview

■ Safety

- Original Analysis from 2010 - 2014

INJSVR	
● (Red)	(K) Fatal
● (Orange)	(A) Incapacitating
● (Yellow)	(B) Non-incapacitating
● (Light Green)	(C) Possible
● (Blue)	(P) Property Damage

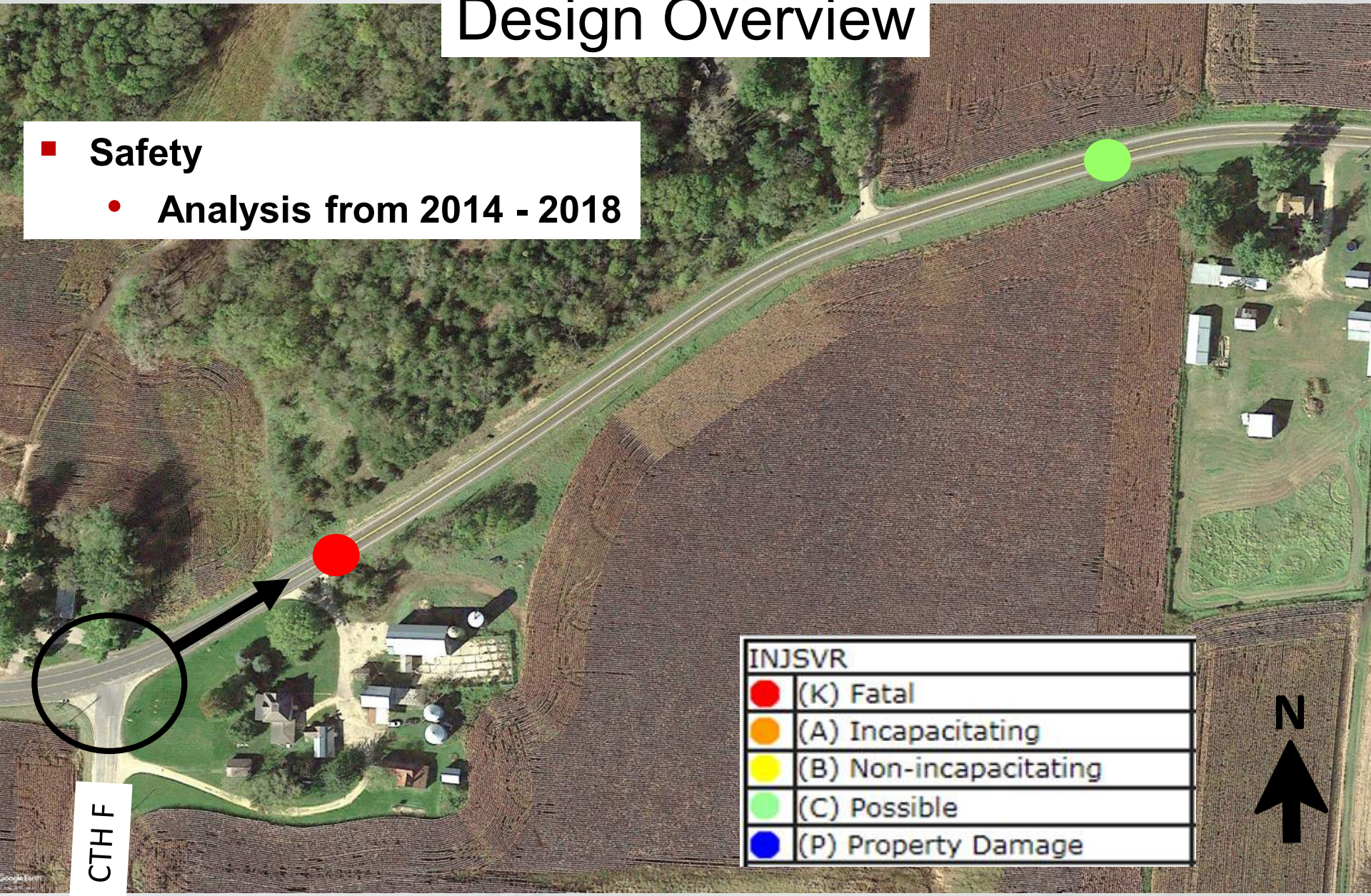


CTHF

Design Overview

■ Safety

- Analysis from 2014 - 2018



INJSVR	
● (K) Fatal	
● (A) Incapacitating	
● (B) Non-incapacitating	
● (C) Possible	
● (P) Property Damage	





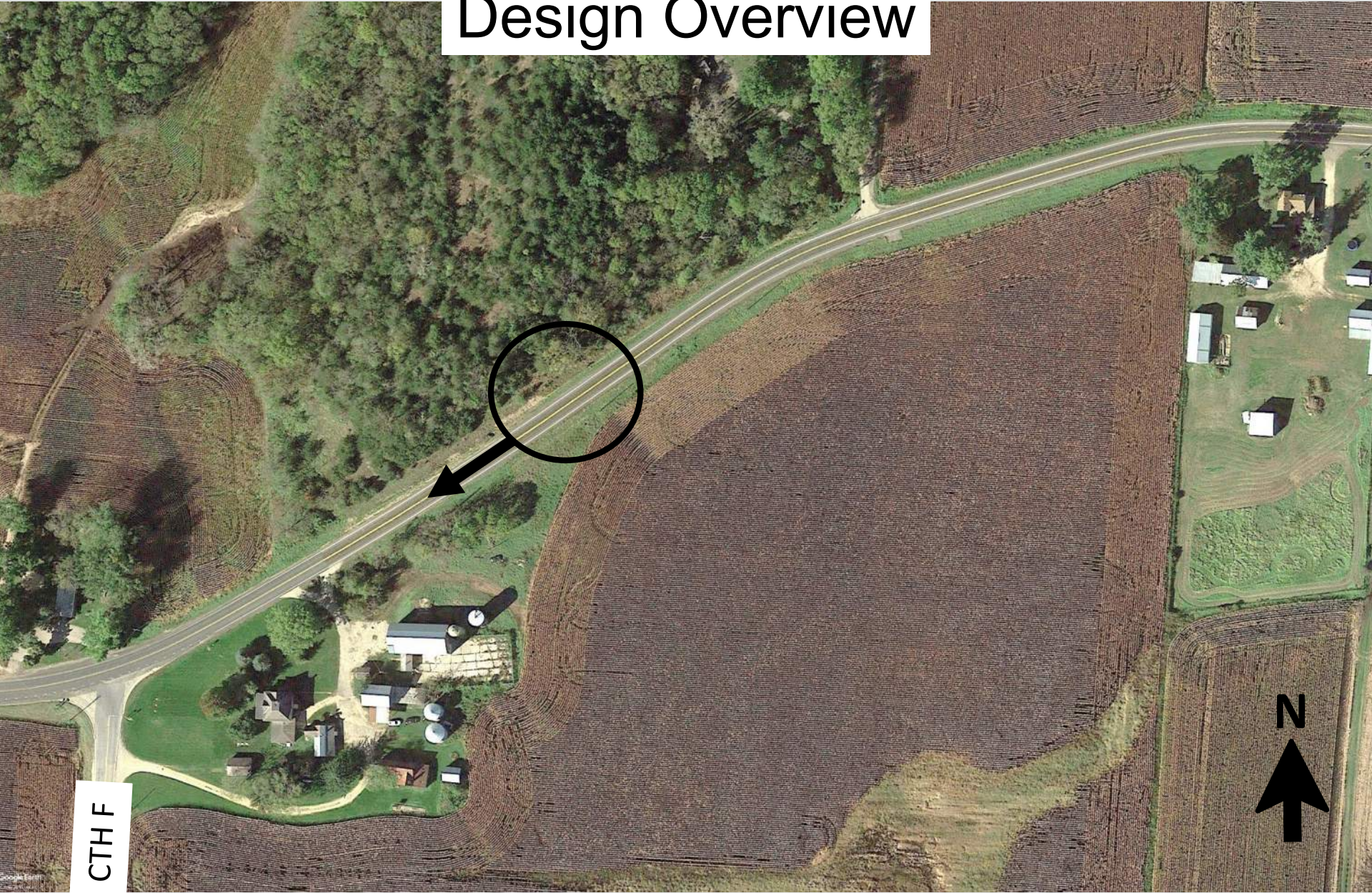
© 2013 Google

© 2013 Google

19



Design Overview



CTHF



WI-19

Design Overview



CTHF



Design Overview

**36-Inch Barrier Wall
(250-Foot Long)**



CTHF

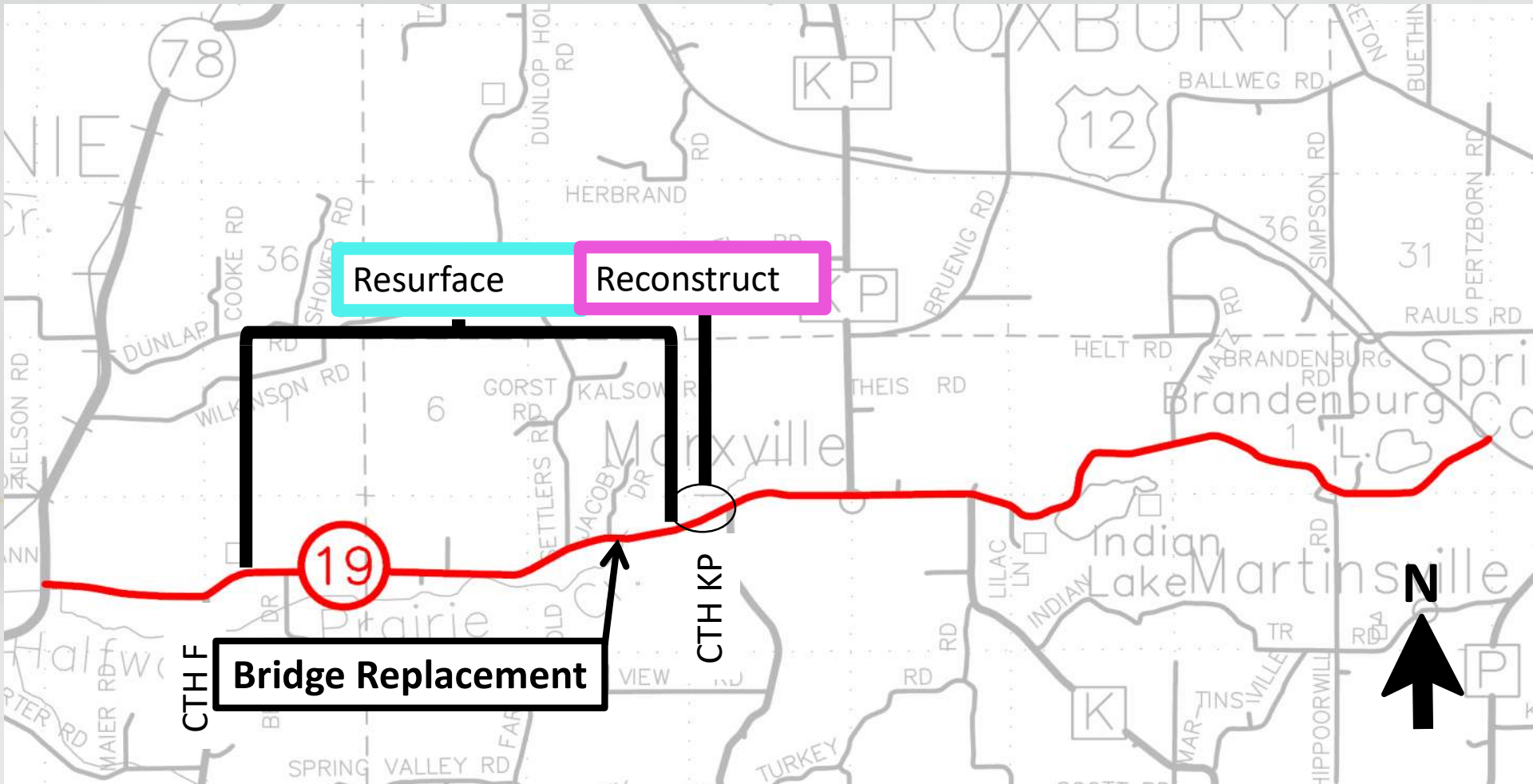




WI-60 Trunk

Design Overview

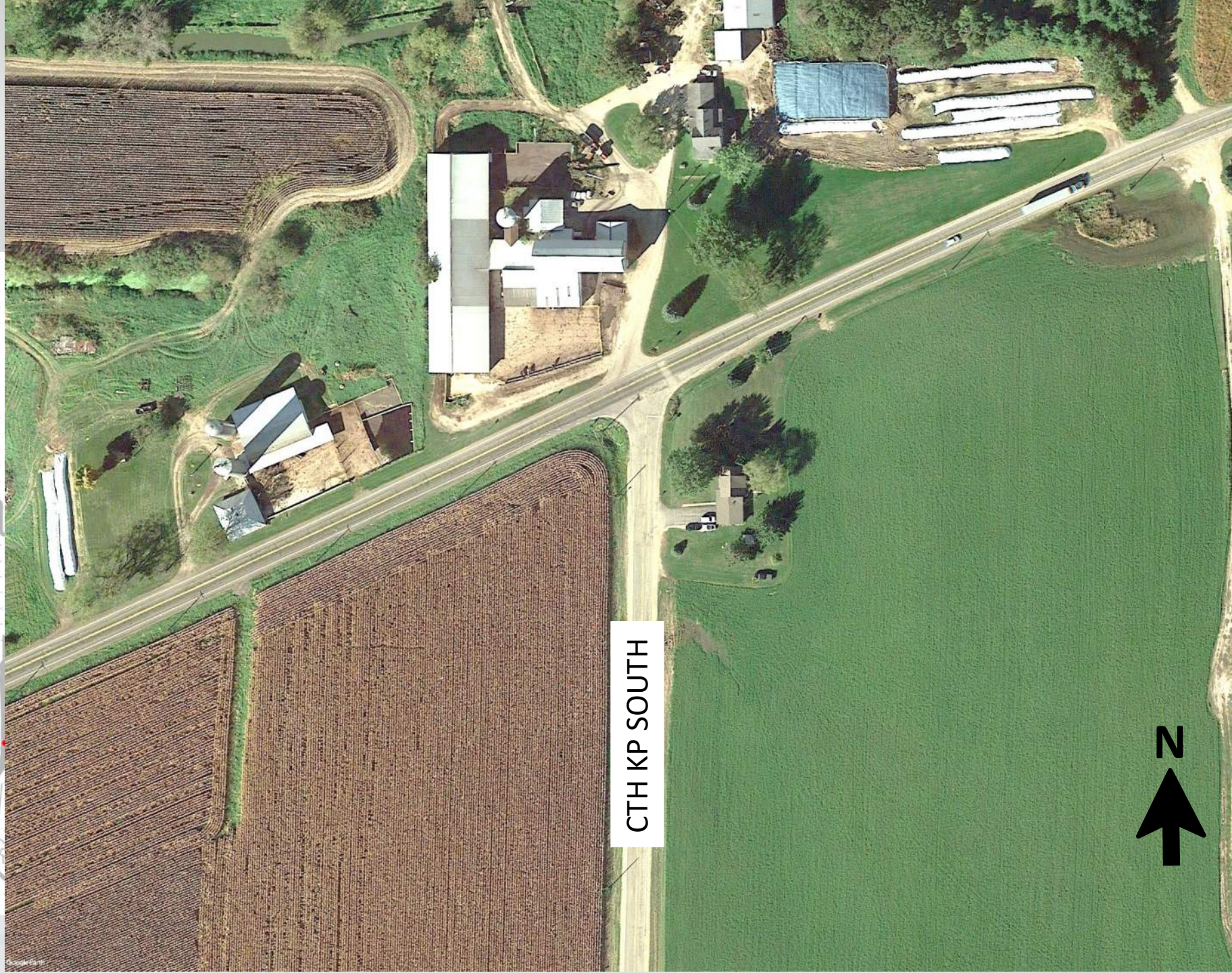
- **Project Overview**



WELSON RD

N

RT



CTH KP SOUTH



RD

ri

o

e

o






k

Design Overview

■ Safety

- Original Analysis from 2010 - 2014



INJSVR	
	(K) Fatal
	(A) Incapacitating
	(B) Non-incapacitating
	(C) Possible
	(P) Property Damage

CTH KP SOUTH



Design Overview

■ Safety

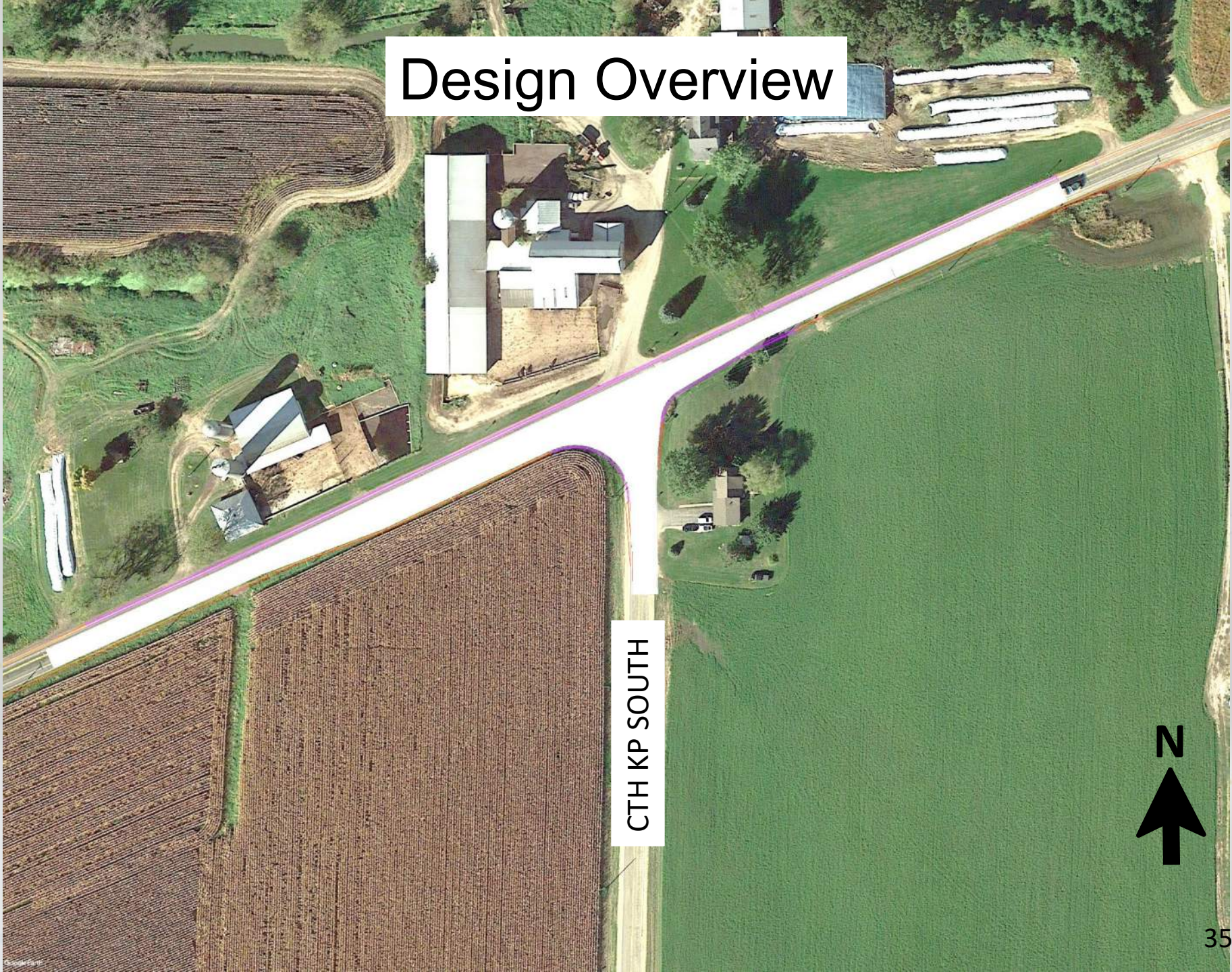
- Analysis from 2014 - 2018

INJSVR	
● (K) Fatal	
● (A) Incapacitating	
● (B) Non-incapacitating	
● (C) Possible	
● (P) Property Damage	

CTH KP SOUTH



Design Overview

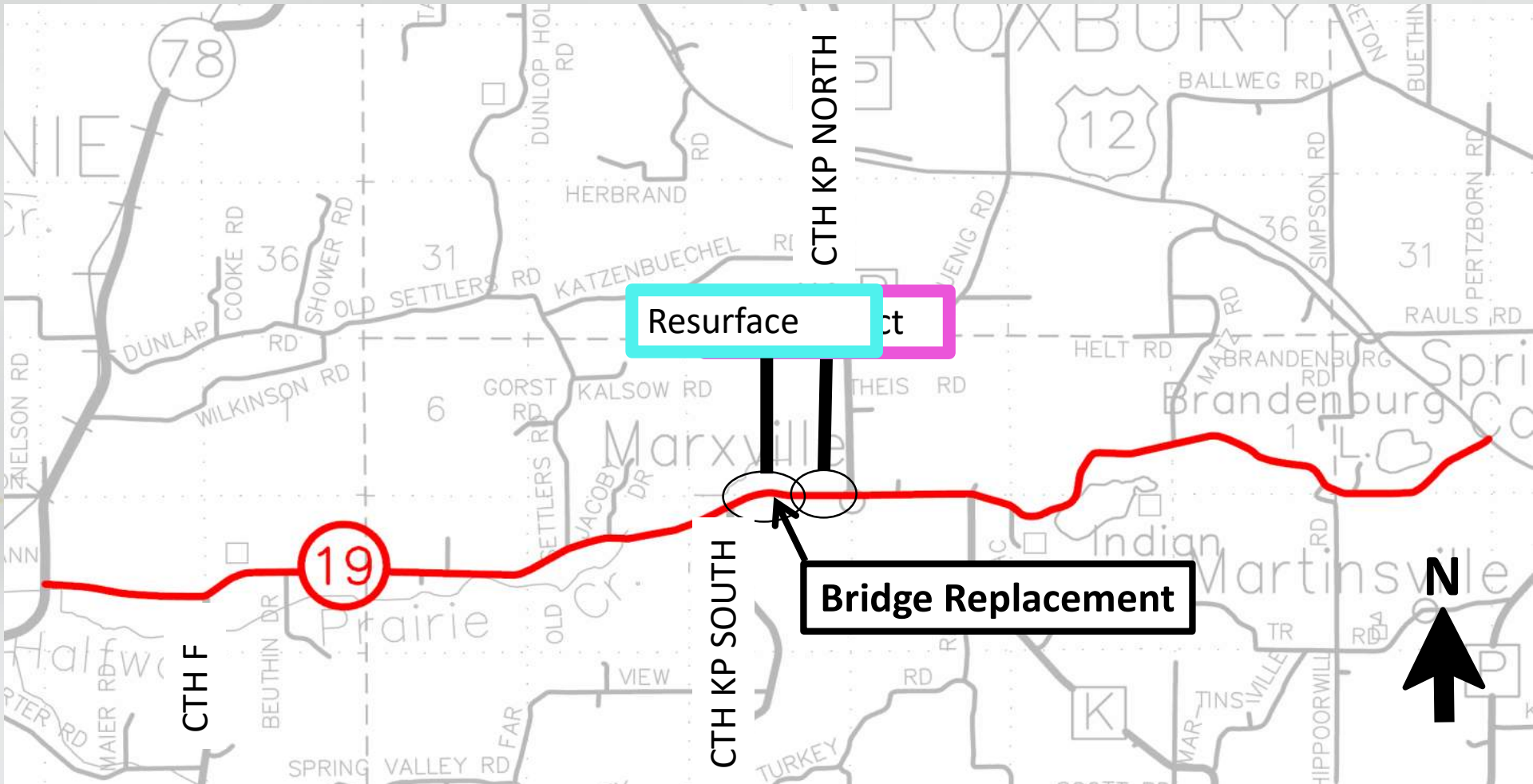


CTH KP SOUTH



Design Overview

- **Project Overview**

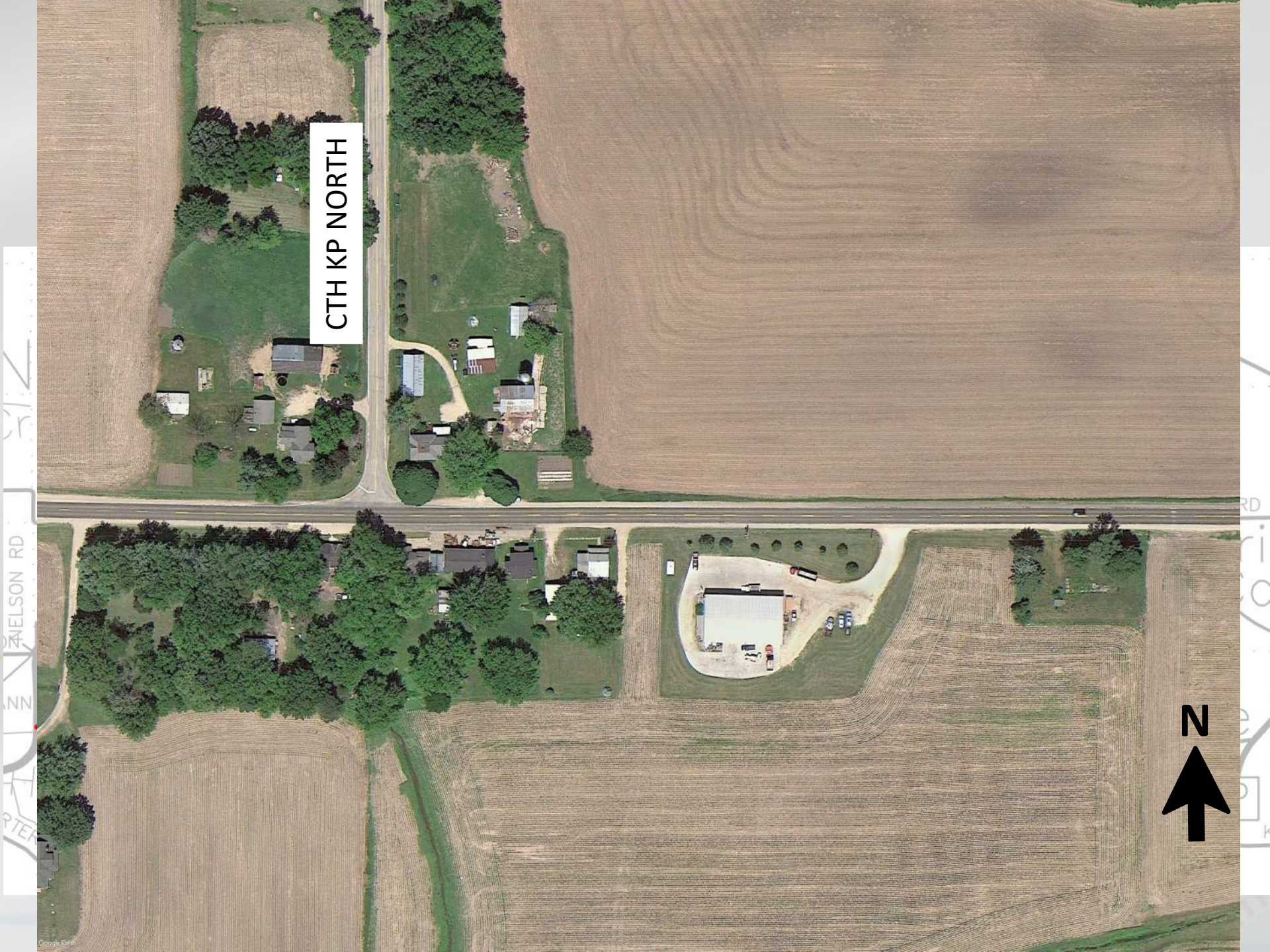


NELSON RD

N

RT

CTH KP NORTH



Design Overview

CTH KP NORTH

■ Drainage

- Improve existing drainage with storm sewer system that will collect water from WIS 19 and discharge west of Marxville into Halfway Prairie Creek



Design Overview

CTH KP NORTH





Design Overview

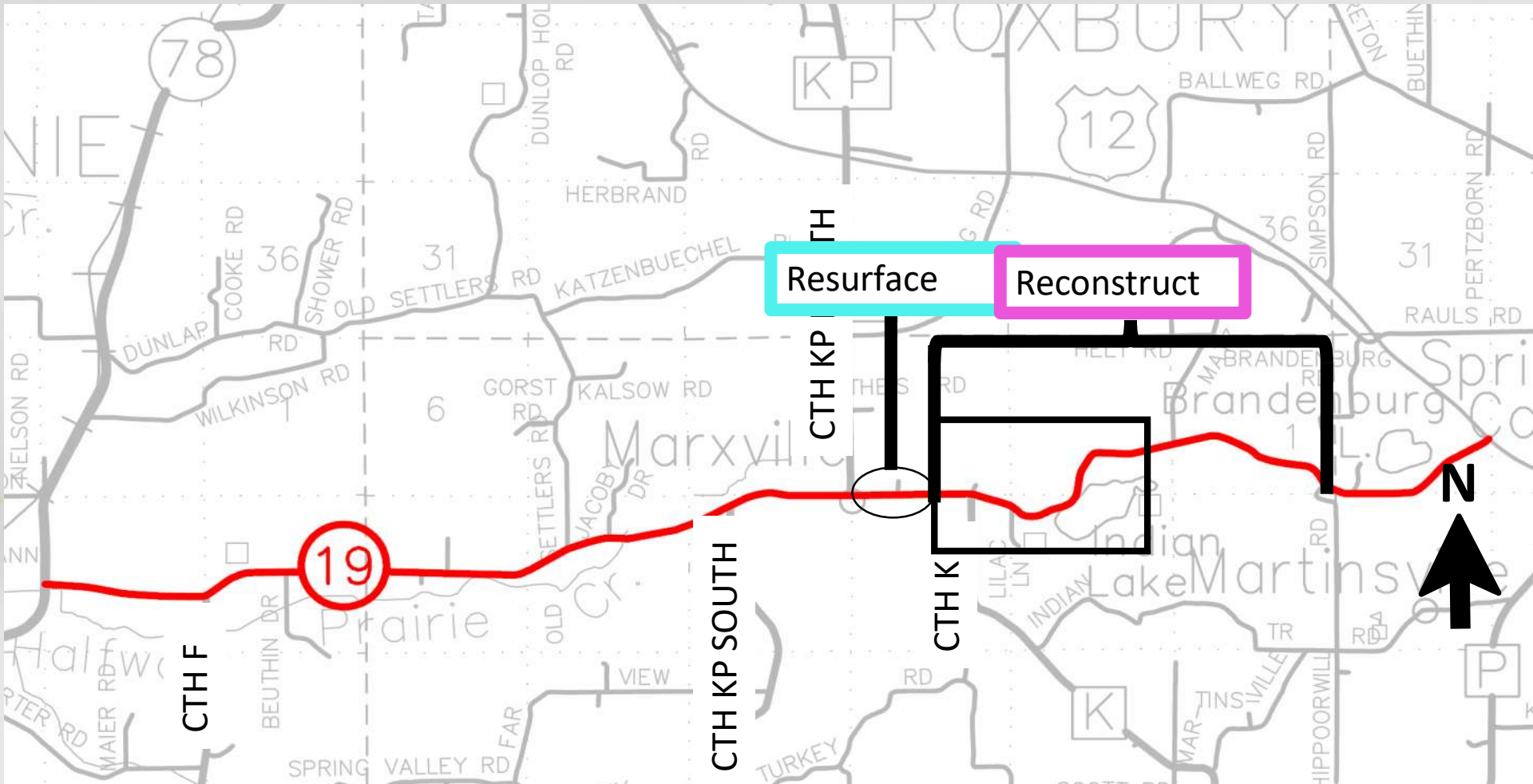
CTH KP NORTH





Design Overview

- Project Overview



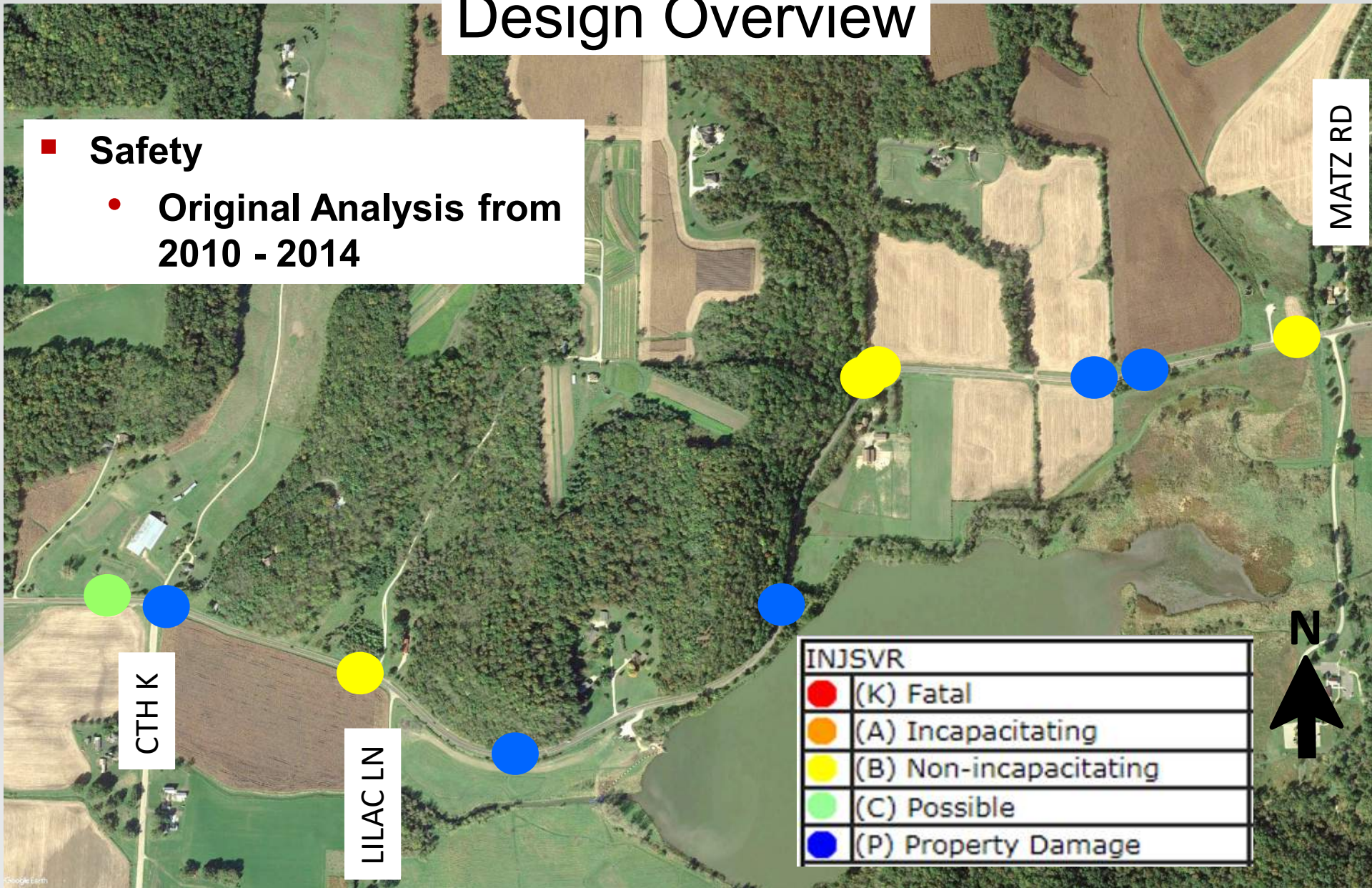
Design Overview



Design Overview

■ Safety

- Original Analysis from 2010 - 2014



Design Overview

■ Safety

- Analysis from 2014 - 2018

MATZ RD

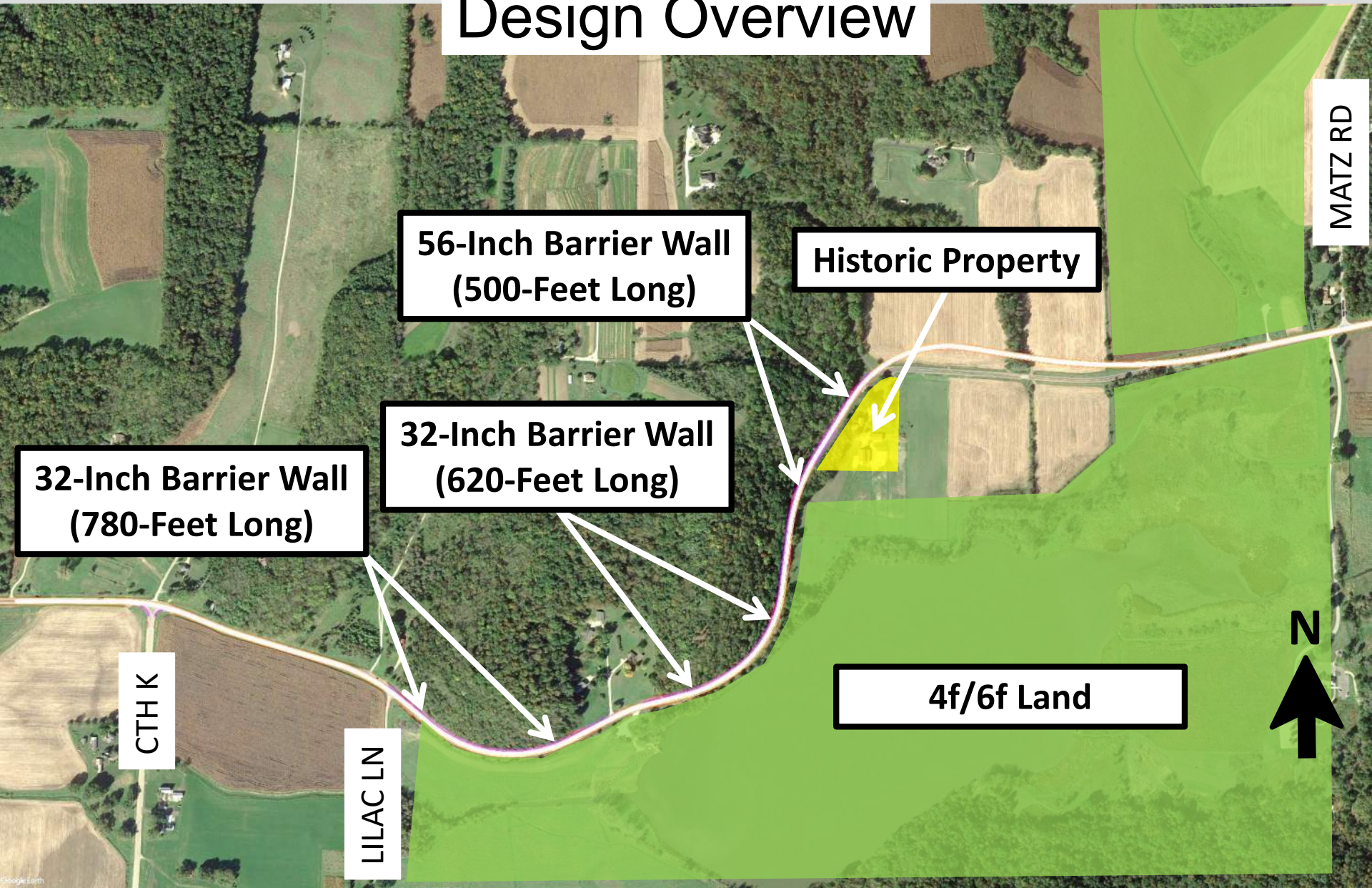
CTH K

LILAC LN

INJSVR	
● (Red)	(K) Fatal
● (Orange)	(A) Incapacitating
● (Yellow)	(B) Non-incapacitating
● (Light Green)	(C) Possible
● (Blue)	(P) Property Damage

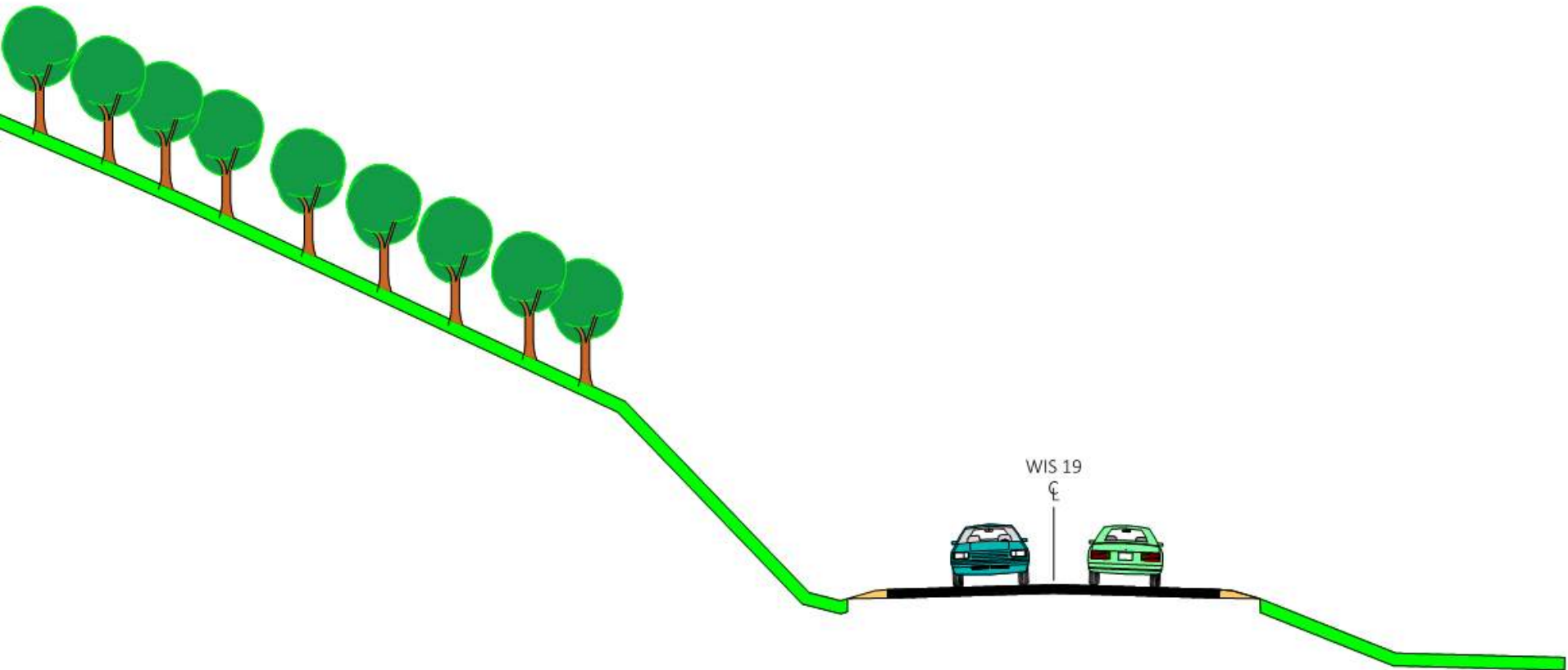


Design Overview



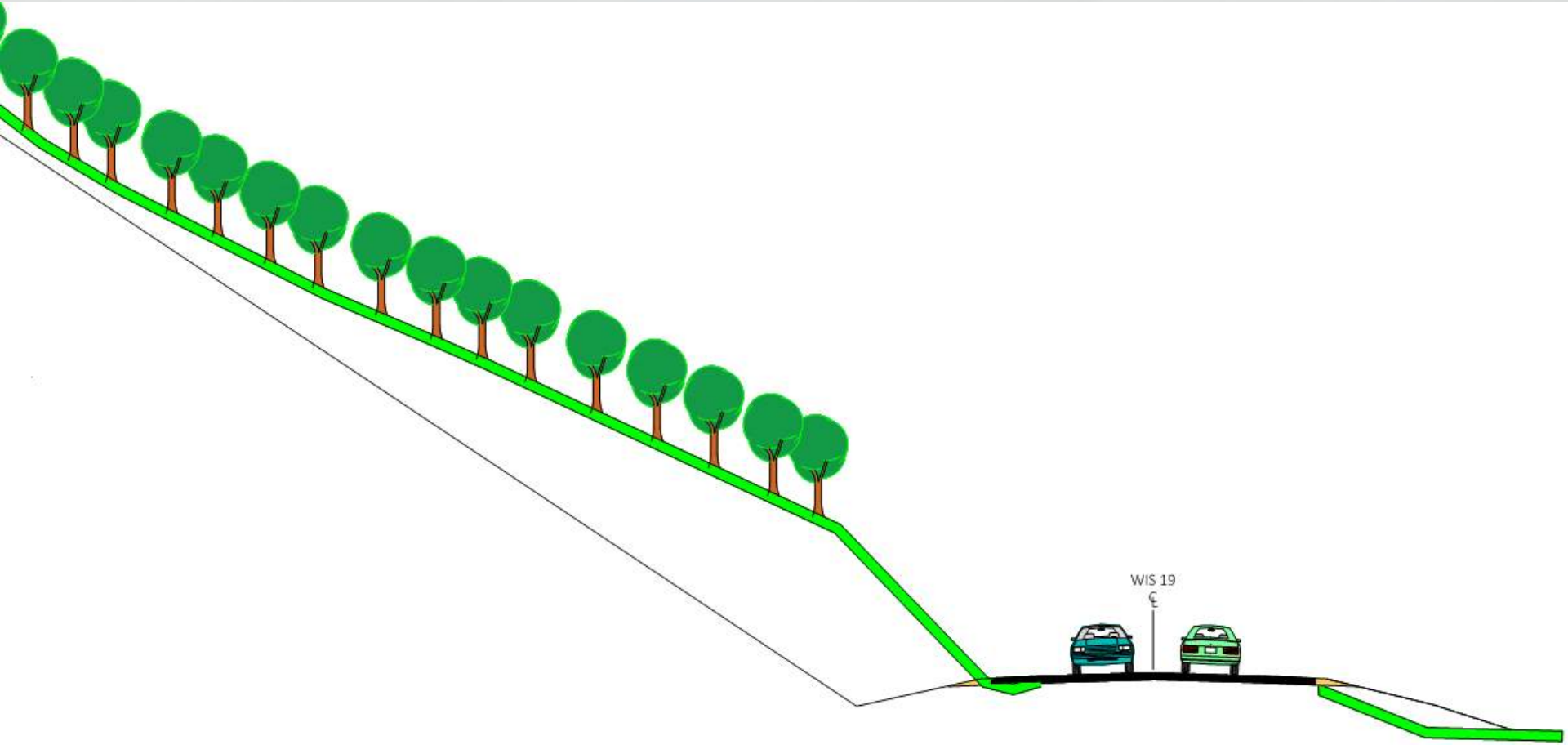
Design Overview

- **Alternatives Considered Along Bluffs**
 - **Existing**



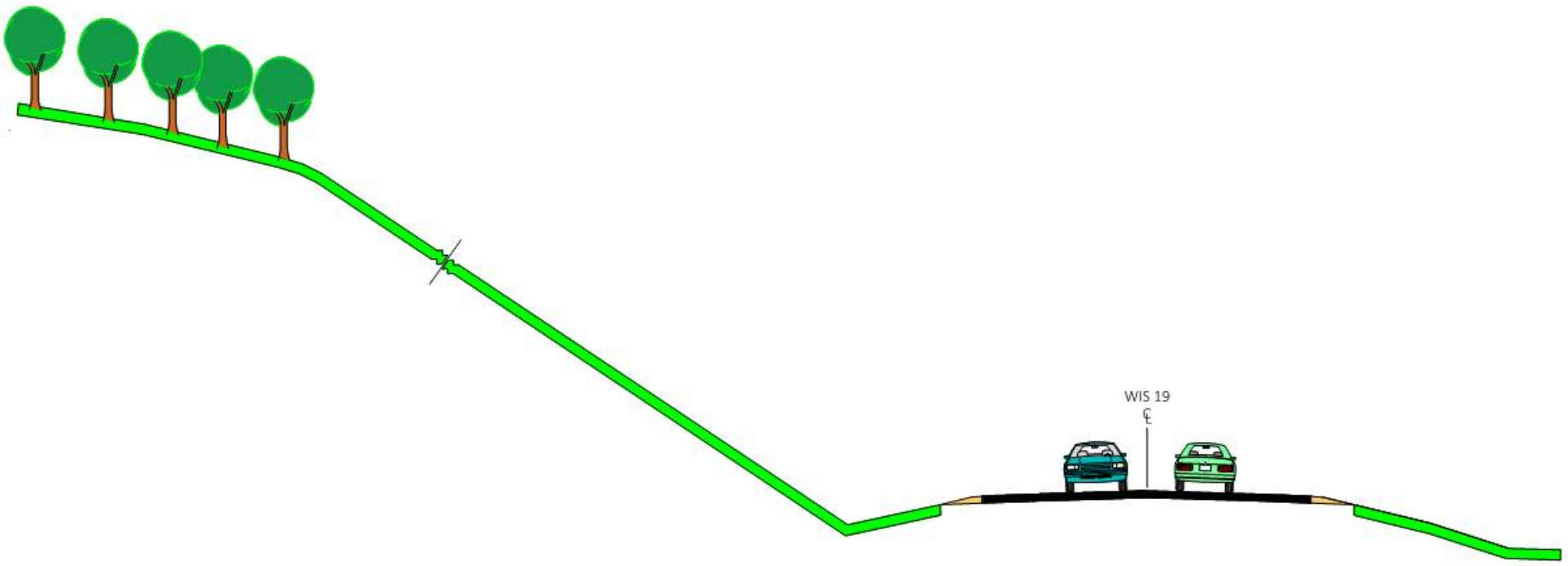
Design Overview

- **Alternatives Considered Along Bluffs**
 - **Typical Ditch**



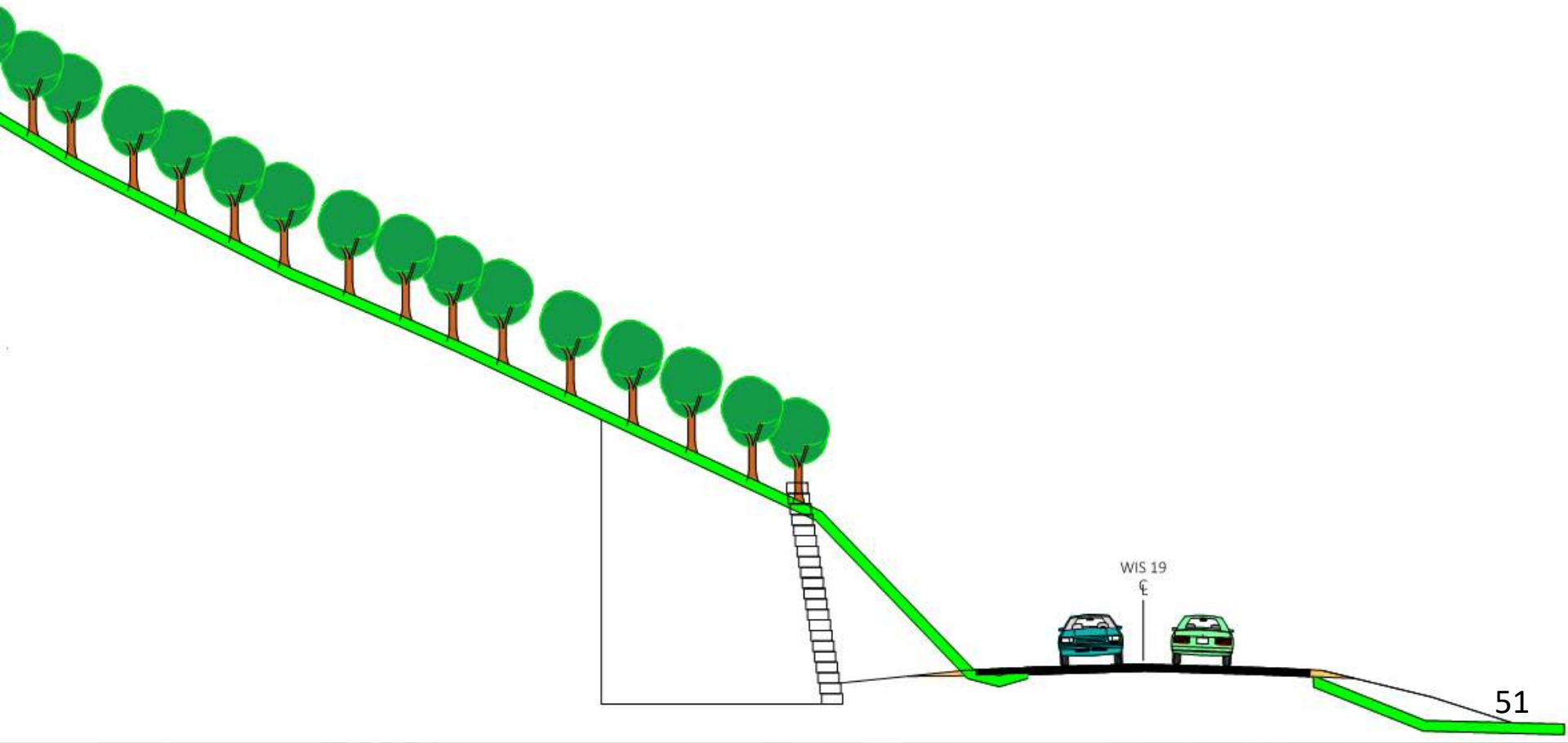
Design Overview

- **Alternatives Considered Along Bluffs**
 - **Typical Ditch**
 - **3X the amount of Real Estate required when compared to barrier wall and retaining wall**



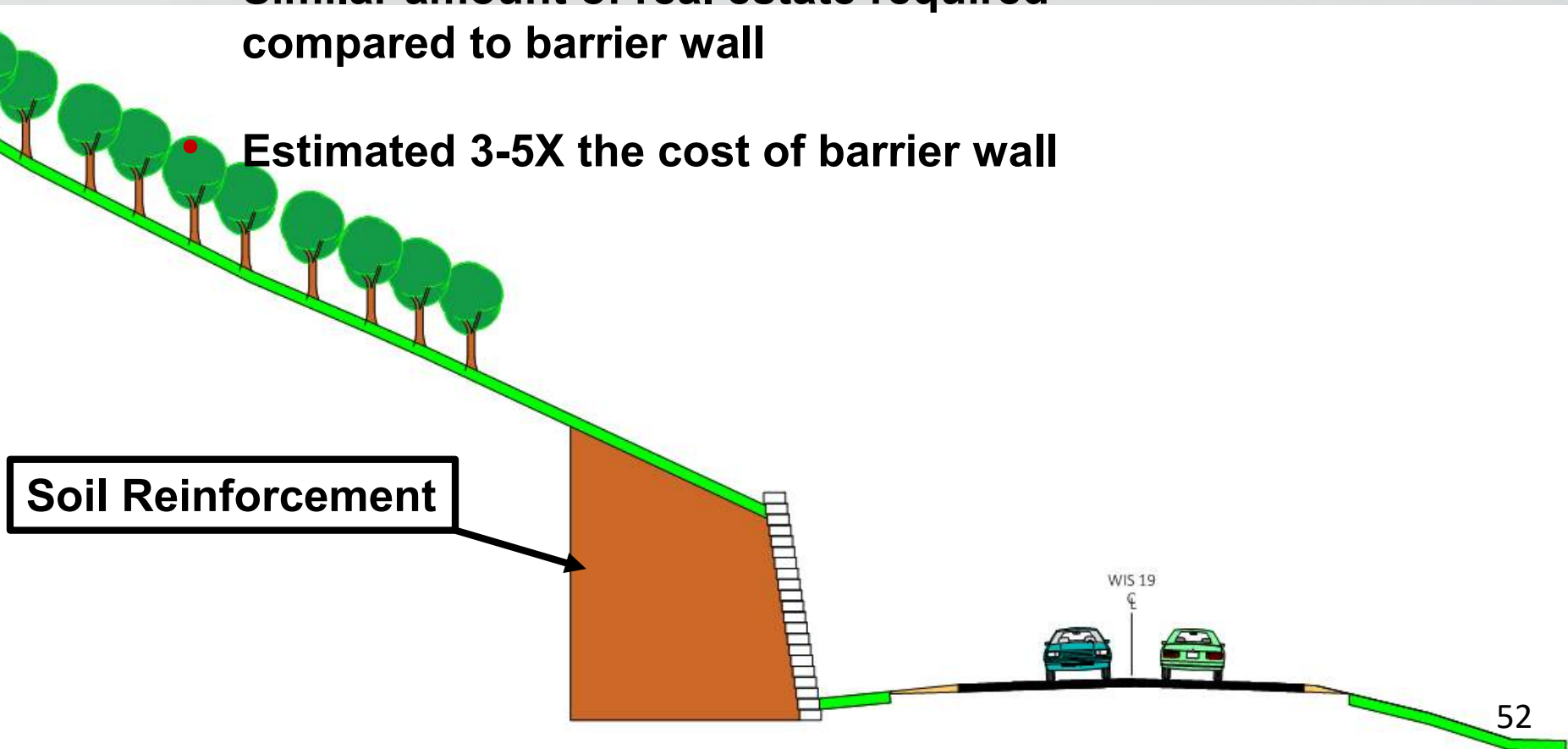
Design Overview

- **Alternatives Considered Along Bluffs**
 - **Retaining Wall**



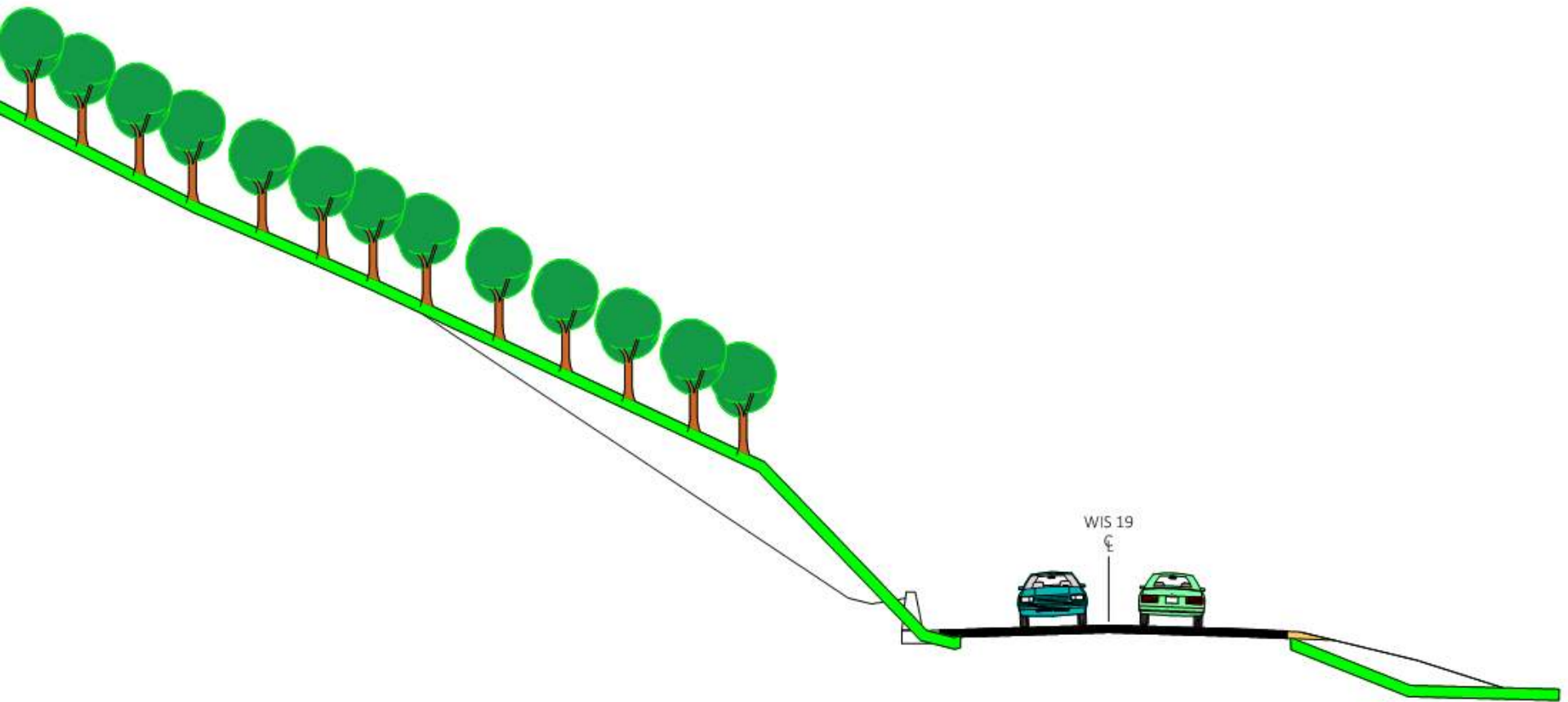
Design Overview

- **Alternatives Considered Along Bluffs**
 - Retaining wall
 - Similar amount of real estate required compared to barrier wall
 - Estimated 3-5X the cost of barrier wall



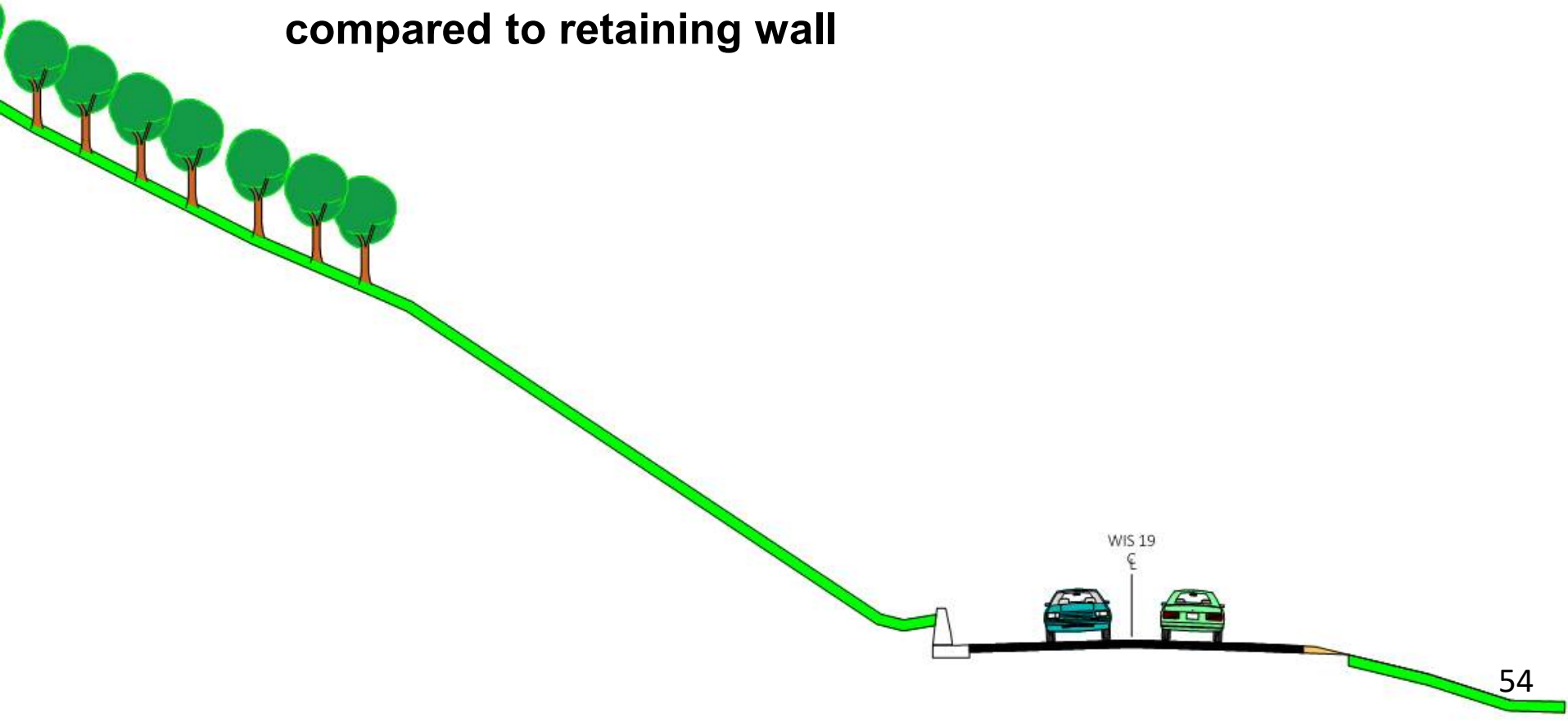
Design Overview

- **Alternatives Considered Along Bluffs**
 - **Barrier Wall**



Design Overview

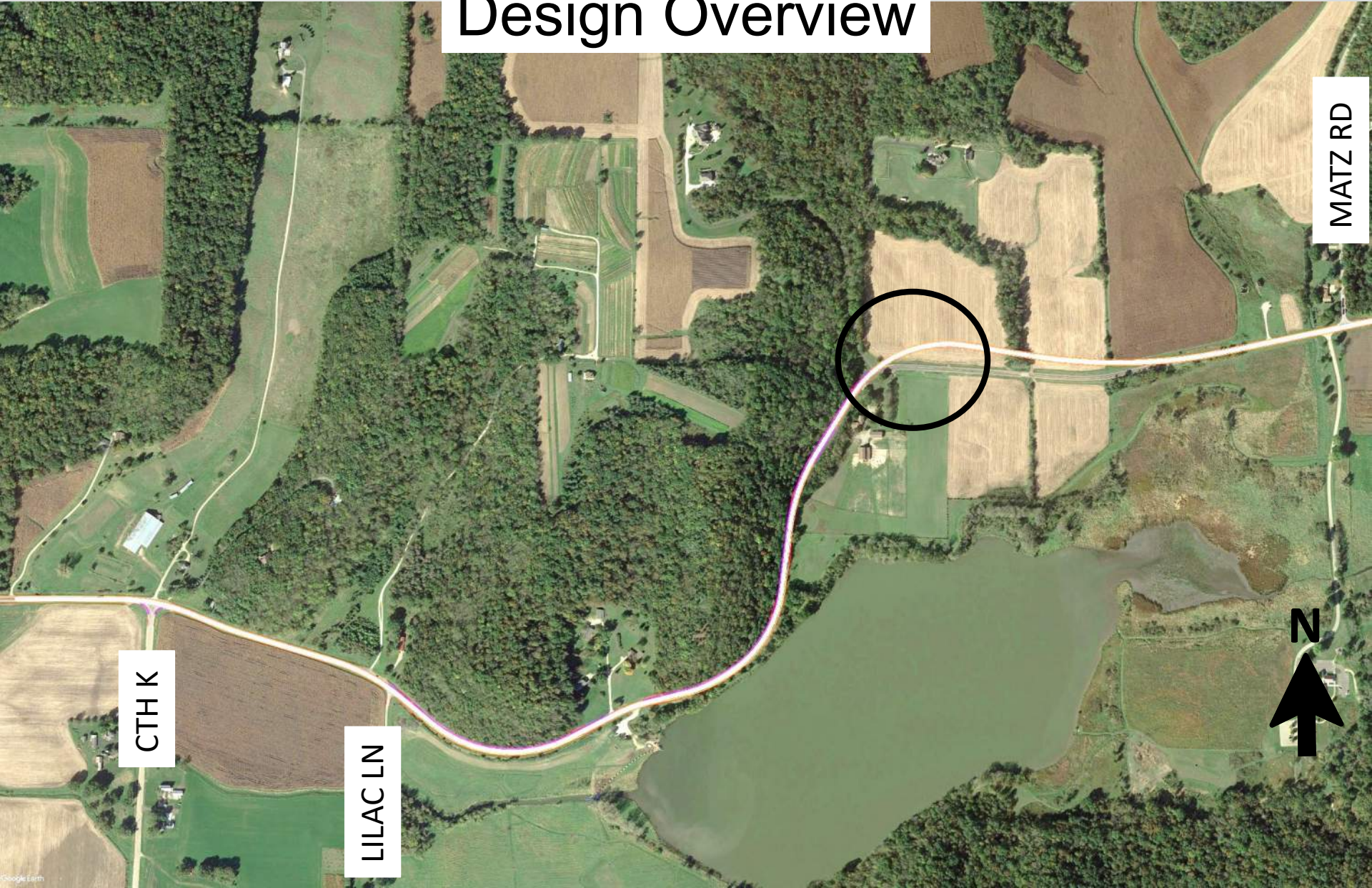
- **Alternatives Considered Along Bluffs**
 - **Barrier Wall**
 - **Similar amount of real estate required compared to retaining wall**





WI-60 Trunk

Design Overview



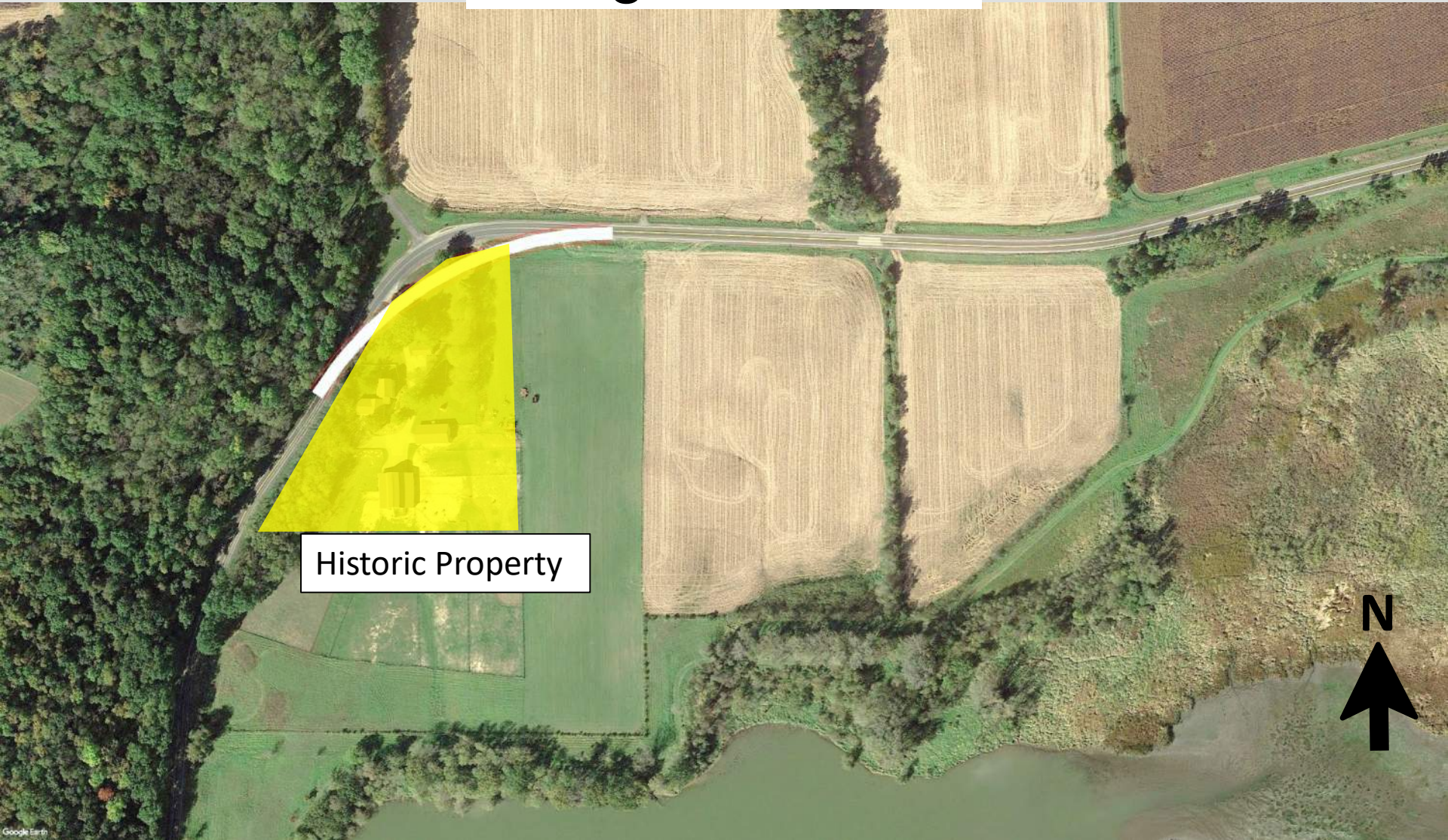
Design Overview



Historic Property



Design Overview



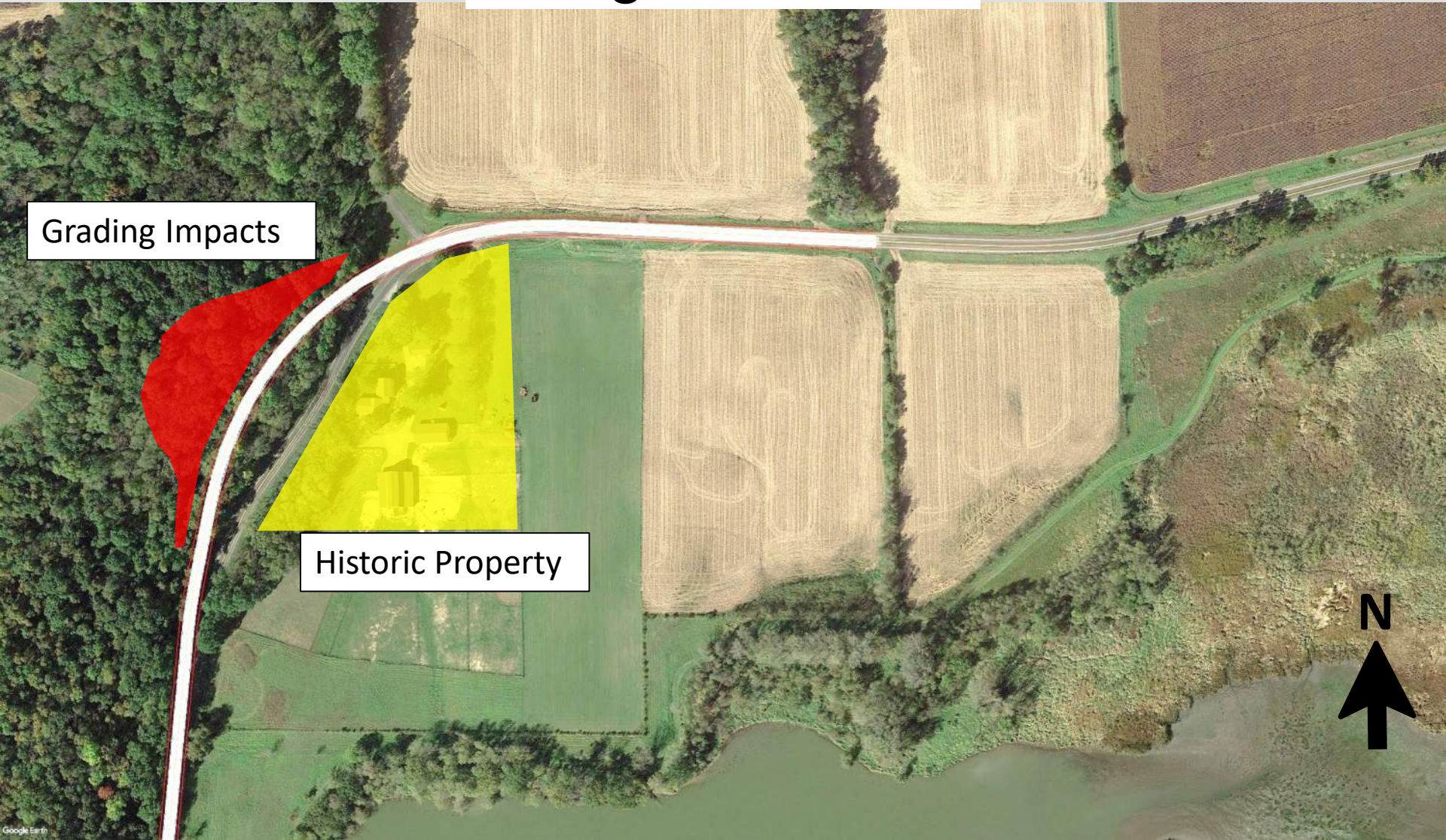
Historic Property

Design Overview

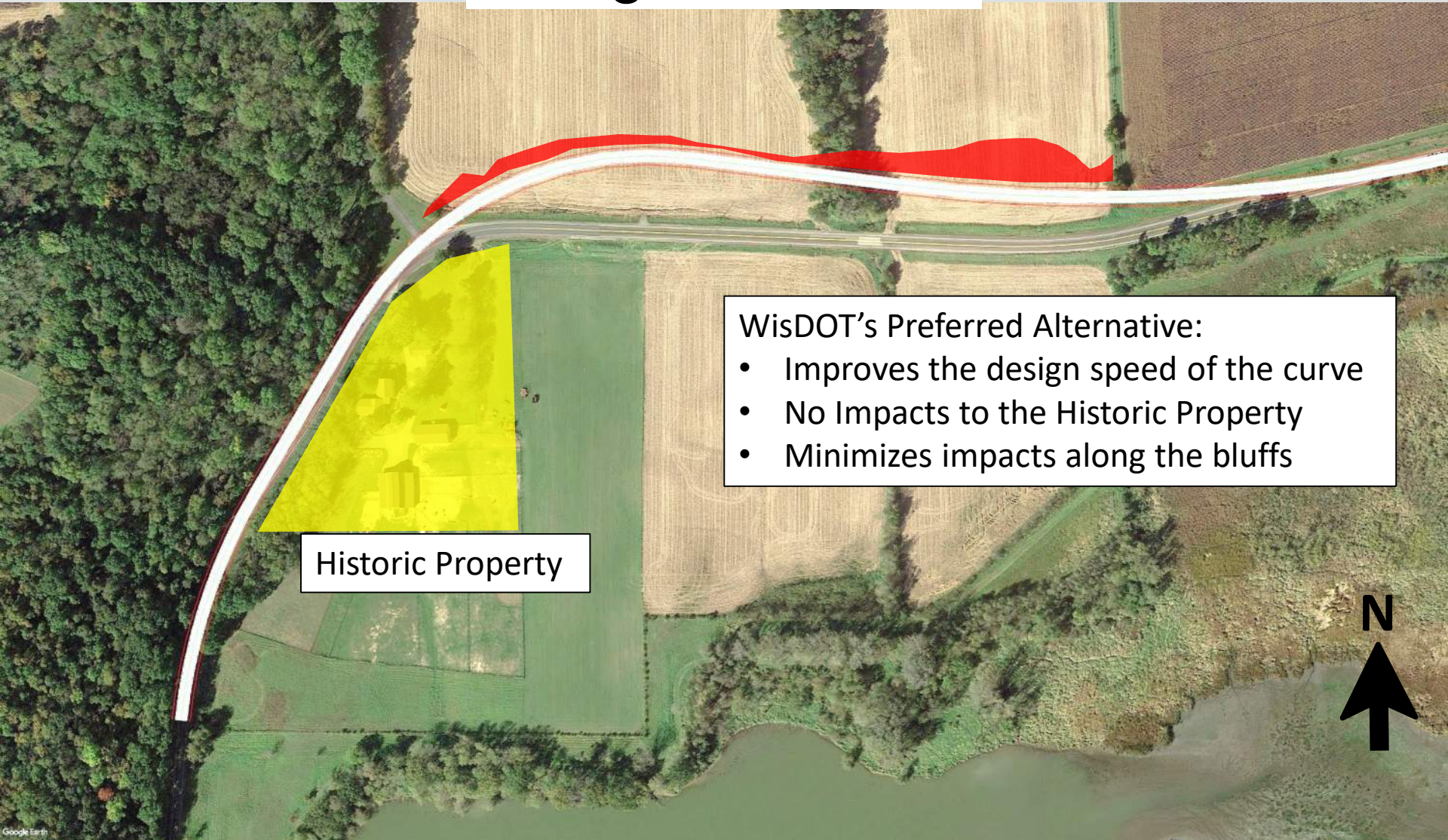
Grading Impacts

Historic Property

N



Design Overview



Historic Property

WisDOT's Preferred Alternative:

- Improves the design speed of the curve
- No Impacts to the Historic Property
- Minimizes impacts along the bluffs

Design Overview



CTH K

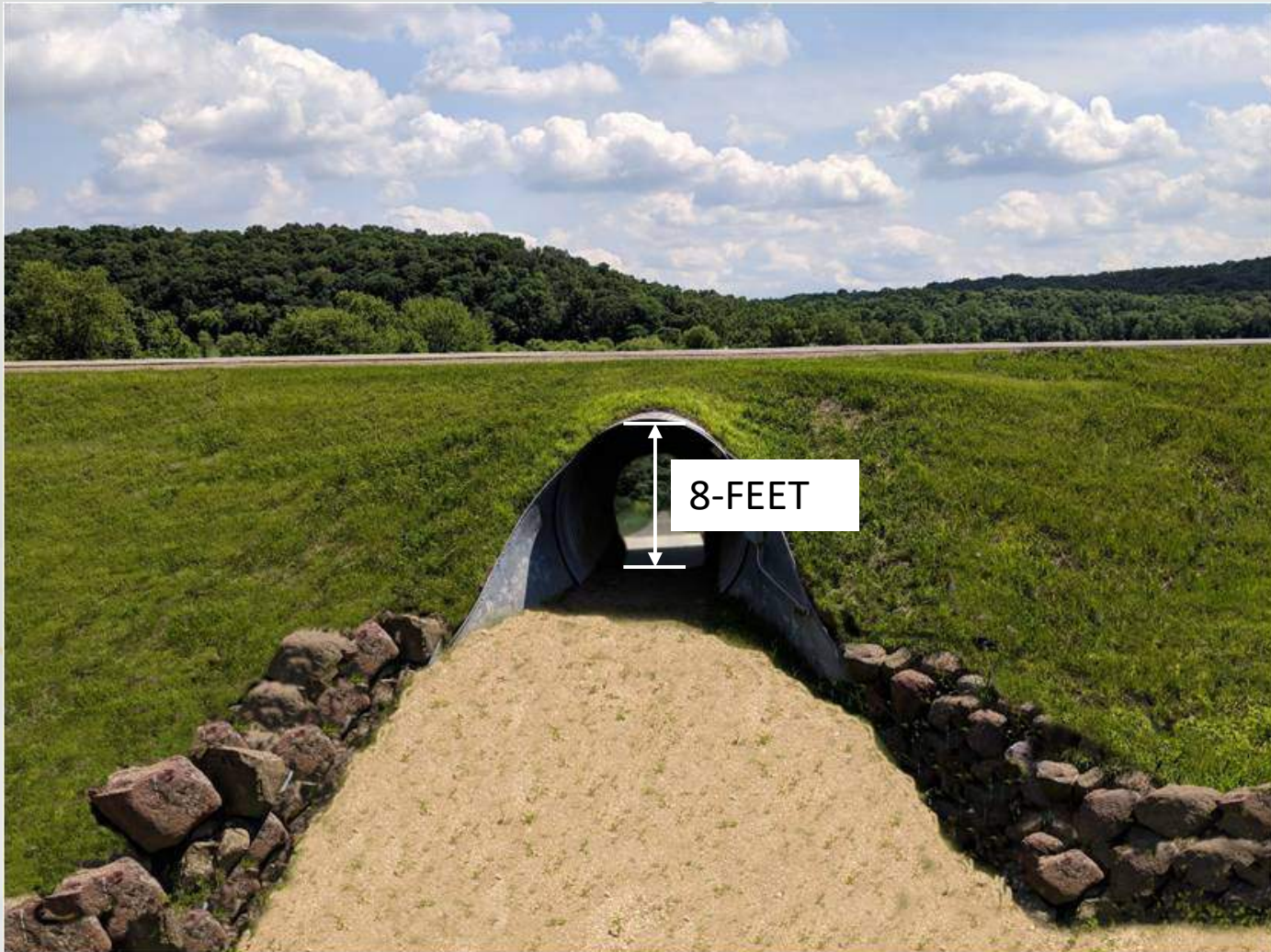
LILAC LN

MATZ RD

N

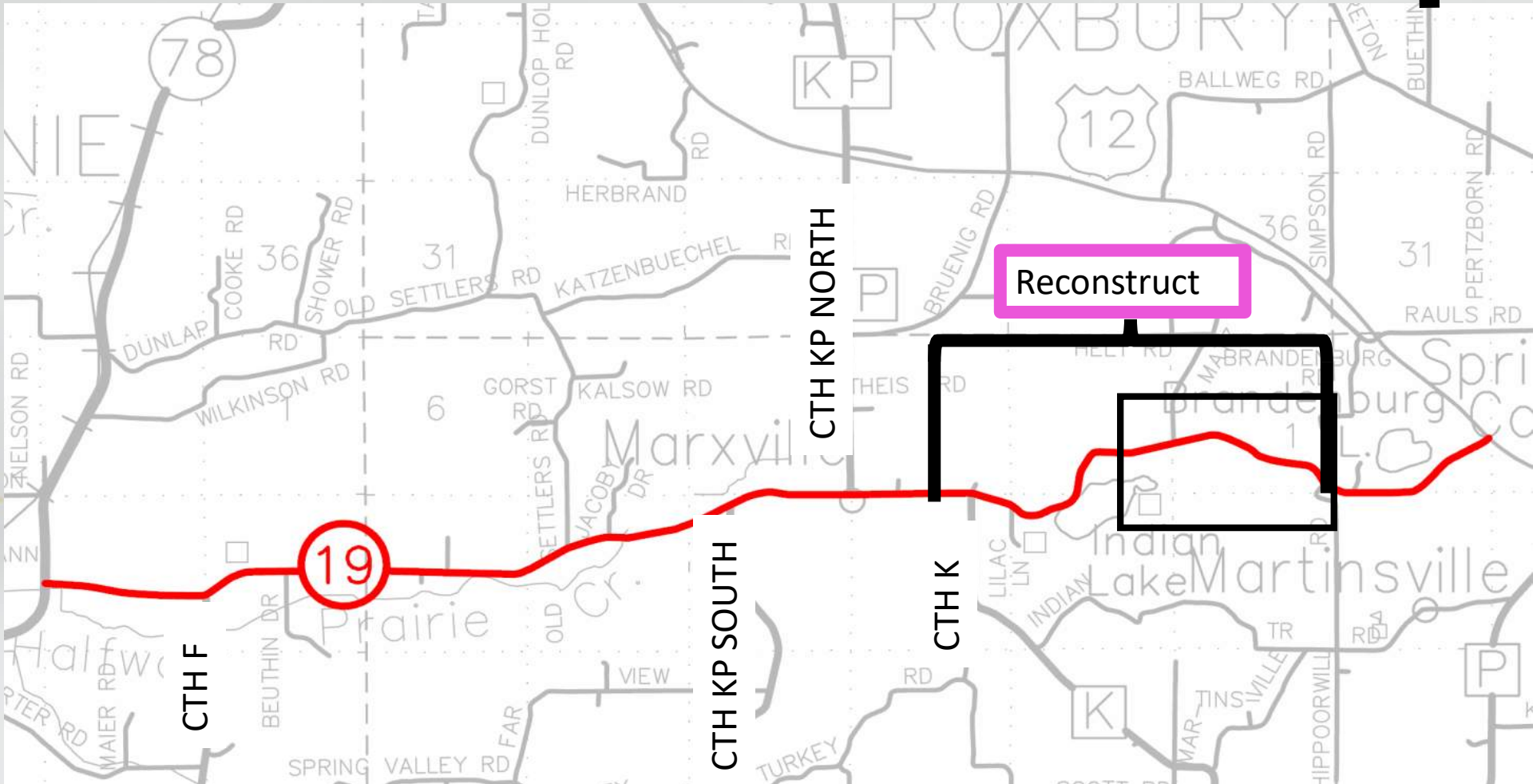
Design Overview

- Pedestrian Underpass



Design Overview

- Project Overview



Design Overview



MATZ RD

WHIPPOORWILL RD



Design Overview



■ Safety

- Original Analysis from 2010 - 2014

MATZ RD

INJSVR	
Red circle	(K) Fatal
Orange circle	(A) Incapacitating
Yellow circle	(B) Non-incapacitating
Light green circle	(C) Possible
Blue circle	(P) Property Damage

WHIPPOORWILL RD

Design Overview



■ Safety

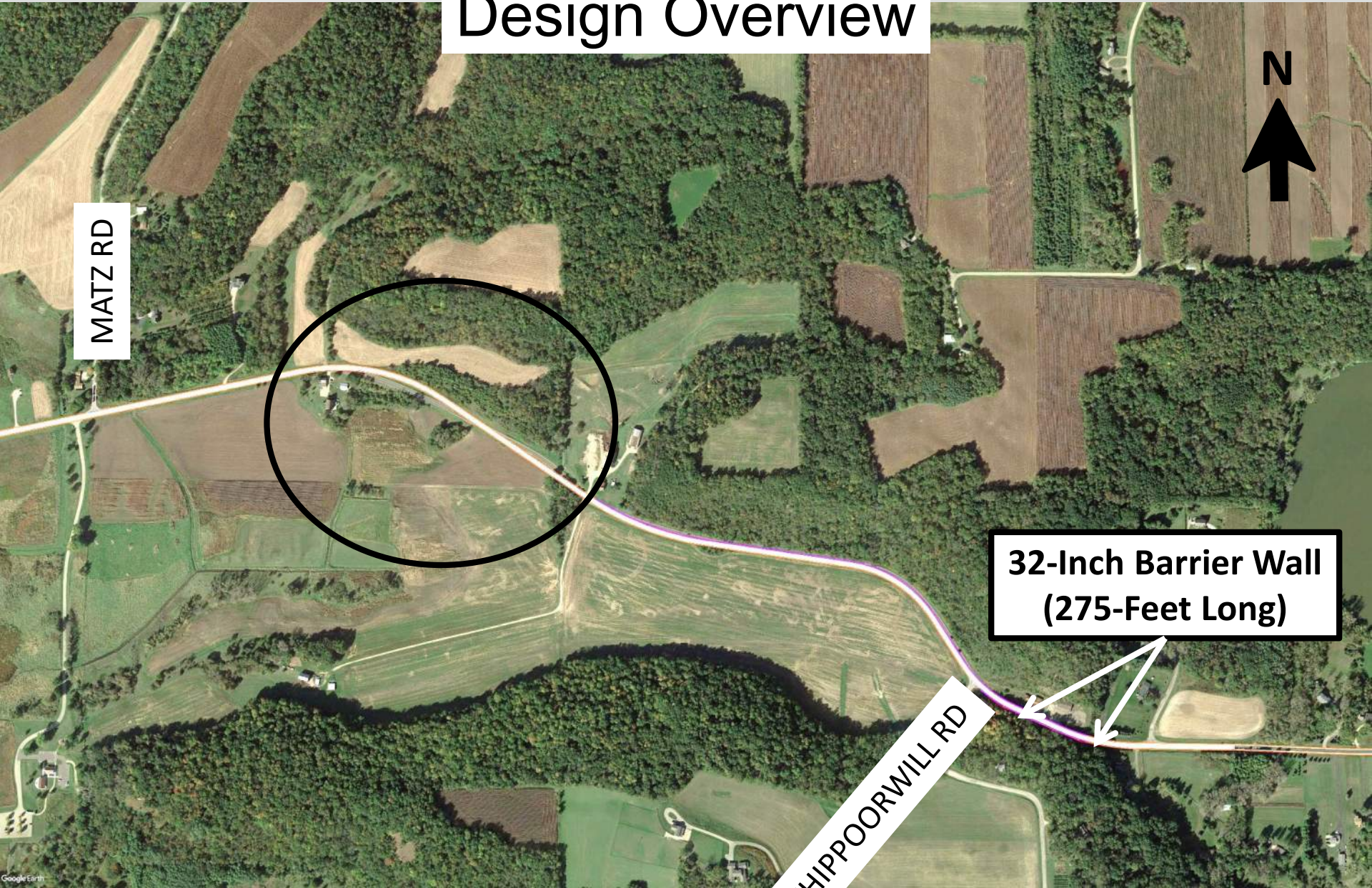
- Analysis from 2014 - 2018

MATZ RD

INJSVR	
● (K) Fatal	
● (A) Incapacitating	
● (B) Non-incapacitating	
● (C) Possible	
● (P) Property Damage	

WHIPPOORWILL RD

Design Overview



MATZ RD



**32-Inch Barrier Wall
(275-Foot Long)**

WHIPPOORWILL RD

Design Overview



Historic Property





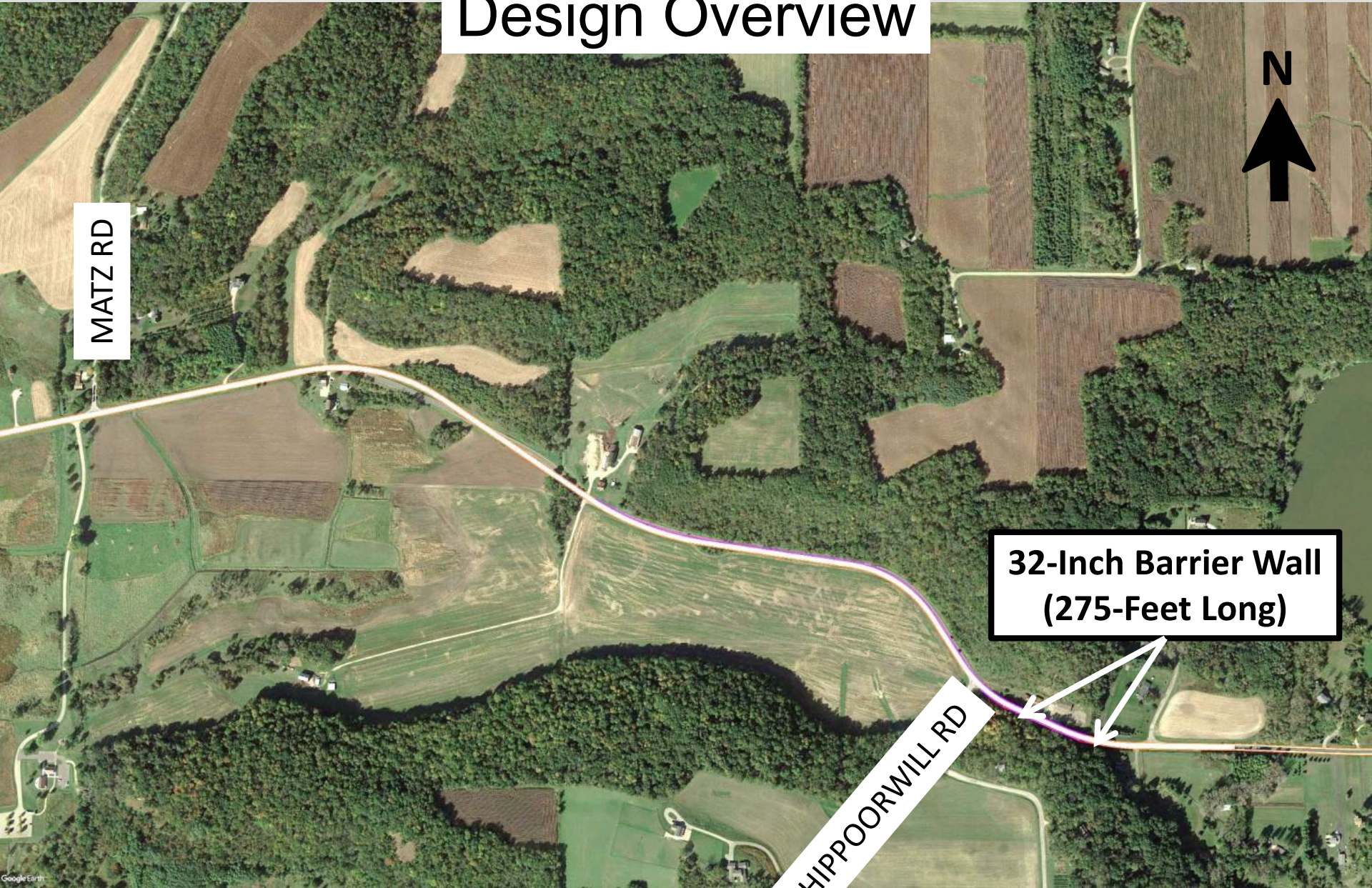
Design Overview



Historic Property



Design Overview



MATZ RD

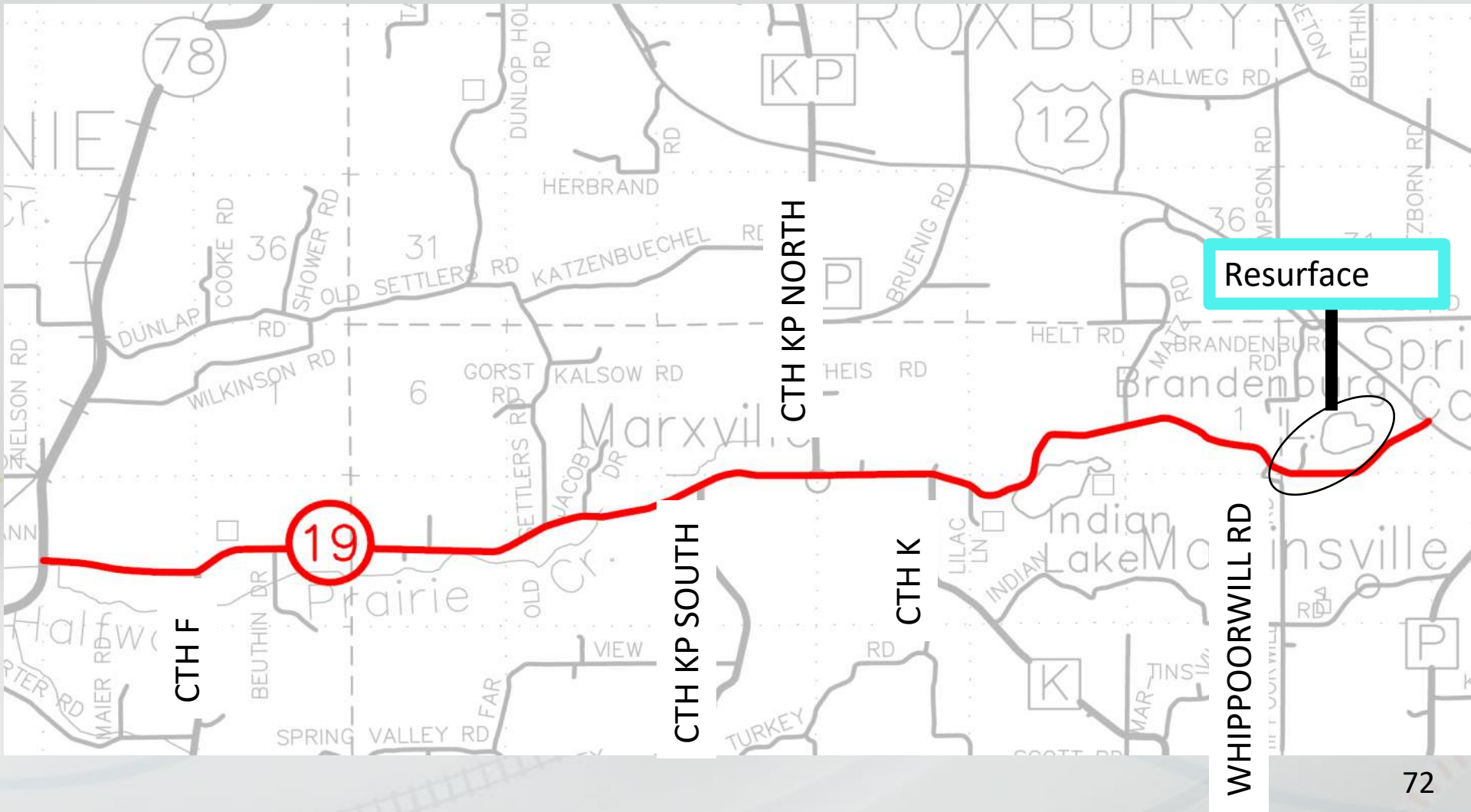


**32-Inch Barrier Wall
(275-Foot Long)**



WHIPPOORWILL RD

Design Overview

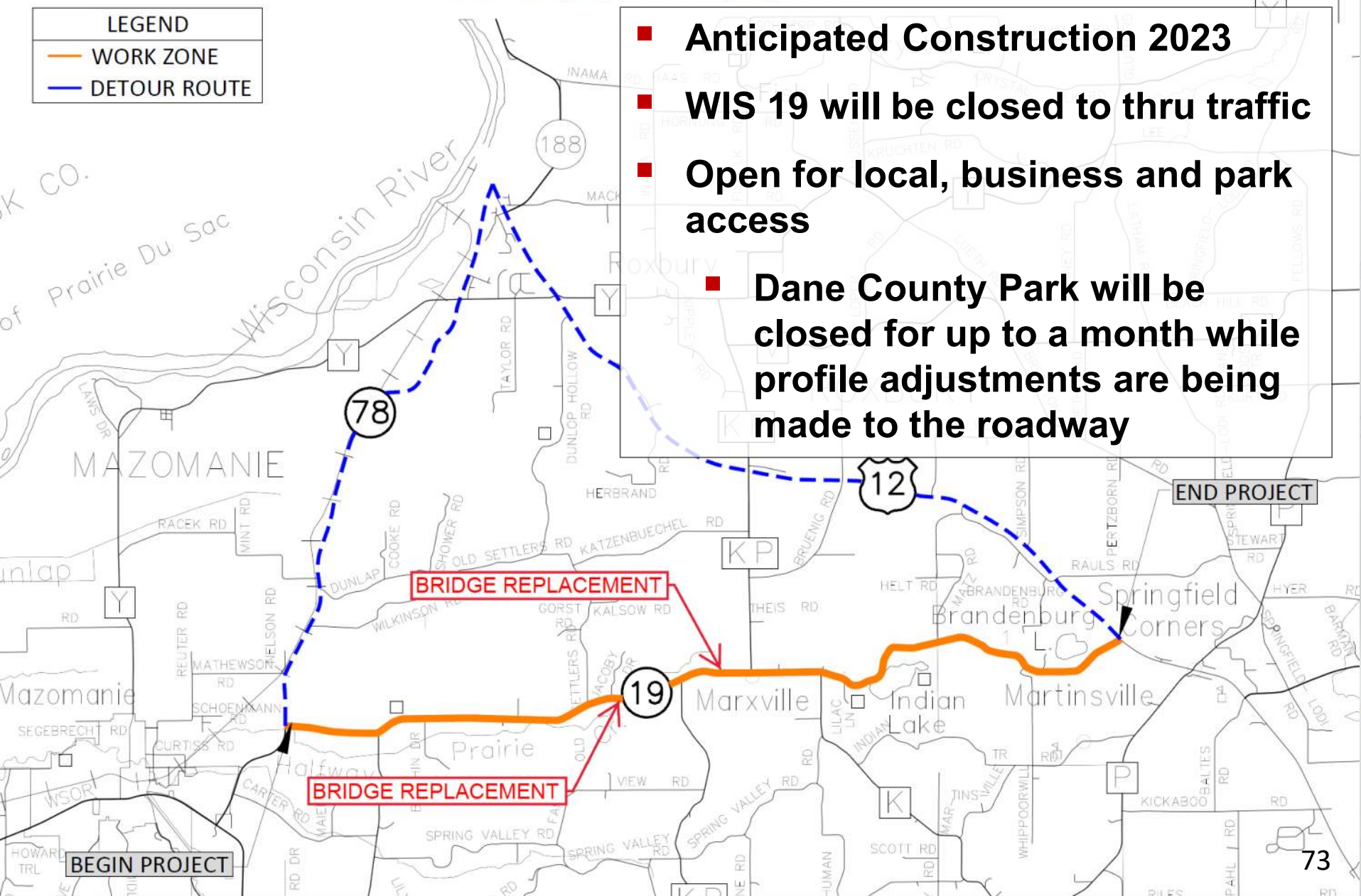
- Project Overview



5145-00-01/71 WIS 19 (WIS 78 TO US 12) DETOUR ROUTE

LEGEND	
	WORK ZONE
	DETOUR ROUTE

- Anticipated Construction 2023
- WIS 19 will be closed to thru traffic
- Open for local, business and park access
- Dane County Park will be closed for up to a month while profile adjustments are being made to the roadway



BEGIN PROJECT

END PROJECT

Upcoming Schedule

- **Signed Final Environmental Report** **March 2020**
- **Signed Final Plat** **May 2020**
- **Real Estate Acquisition** **Summer 2020**
- **Final Plans** **May 2022**
- **Construction** **Spring 2023**

Input Requested

- **Drain Tile Locations**
- **Septic Tank Locations**
- **Drainage Issues**
- **Sensitive Installations, Trees, or Heirlooms**

Thank you for your time

This Question/Answer portion is for the purpose of assisting those who chose to prepare formal testimony. This portion will not be part of the official public hearing record.

Remaining Schedule

- **Public Verbal Testimony**
- **Private Verbal Testimony**
 - **Review Exhibits and visit with project staff**
- **8:30 PM – Public Hearing Ends**
- **Written (email or mail) testimony must be sent by December 15, 2019**