

**Project 5145-00-01/71
WIS 78 TO US 12
WIS 19
Dane County**

Public Involvement Meeting

July 19, 2018



Welcome and Opening Remarks

William Strobel, PE

WisDOT Project Development Supervisor

Lalitha Balachandran, PE

WisDOT Project Manager

Greg Payne, PE

WisDOT Project Leader

Jeremy Rach

WisDOT Design Engineer

Preliminary Plans

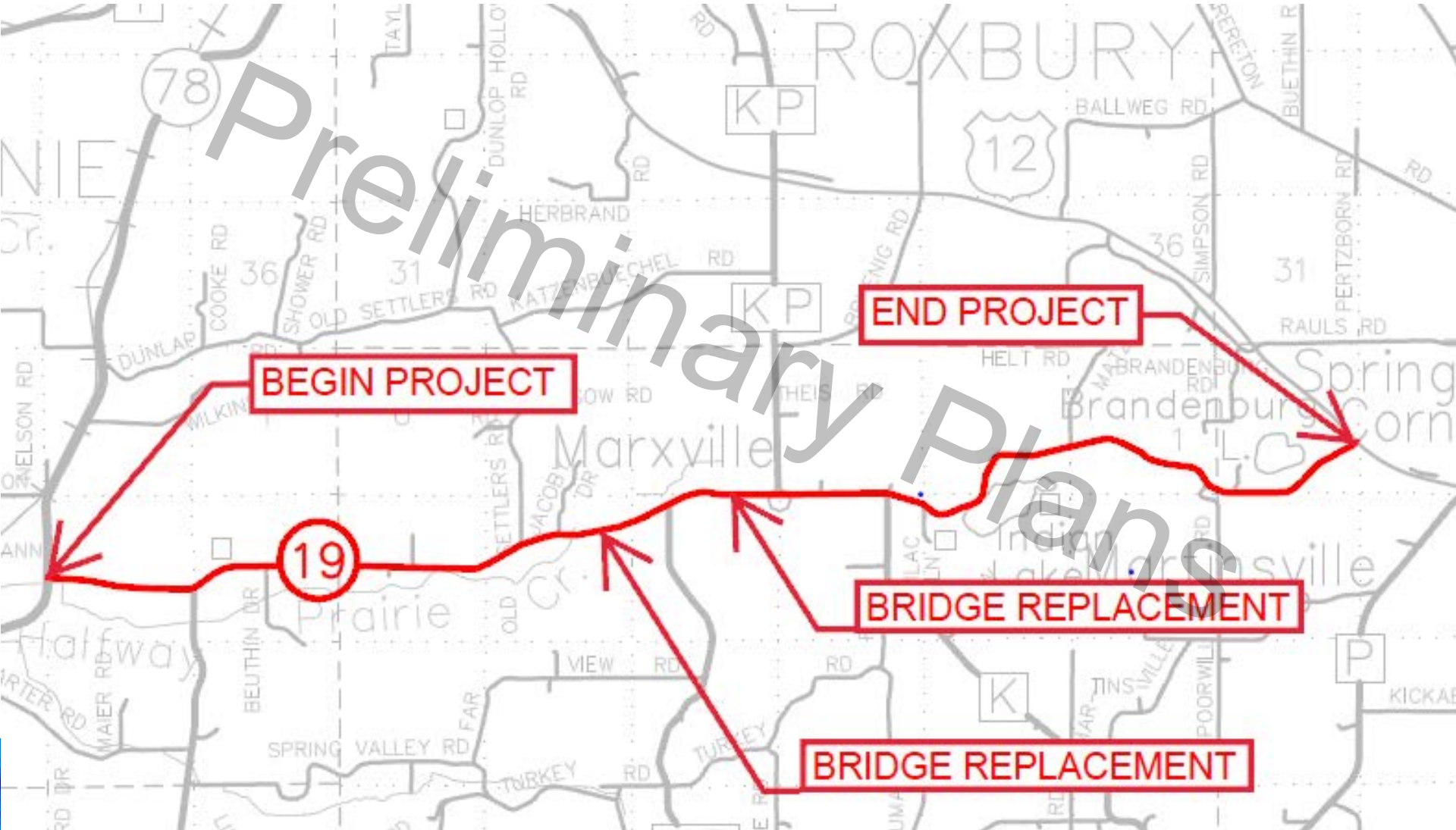


Agenda

- **Project Location**
- **Recent Activities**
- **Project Purpose/Need**
- **Design Overview**
- **Upcoming Schedule**
- **Other Discussion – Questions?**



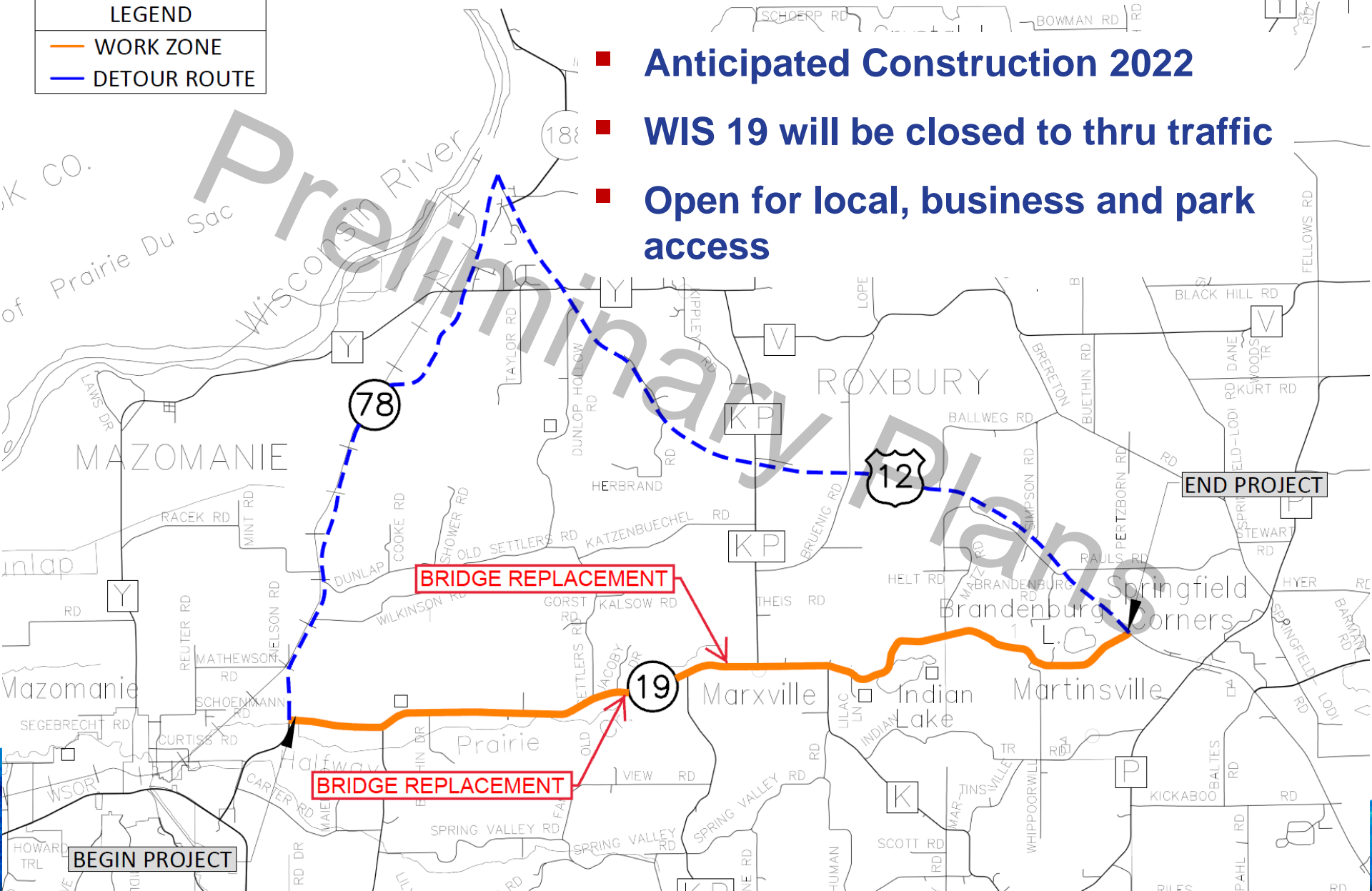
Project Location



5145-00-01/71 WIS 19 (WIS 78 TO US 12) DETOUR ROUTE

LEGEND
— WORK ZONE
— DETOUR ROUTE

- Anticipated Construction 2022
- WIS 19 will be closed to thru traffic
- Open for local, business and park access



Recent Activity

- 2013 – Archaeology investigation began
- 2015 – WisDOT maintenance requested an emergency lane edge improvement
- 2017 – Lane edge improvement project was constructed

Preliminary Plans



Recent Activity

- 2017 continued

- Design for the current project began
- Project flow for surface survey data
- Archaeology investigation continued
- Existing drainage investigation
- Traffic forecast completed

- 2018

- Archaeology investigation completed
- Preliminary impacts completed
- Began drafting environmental report



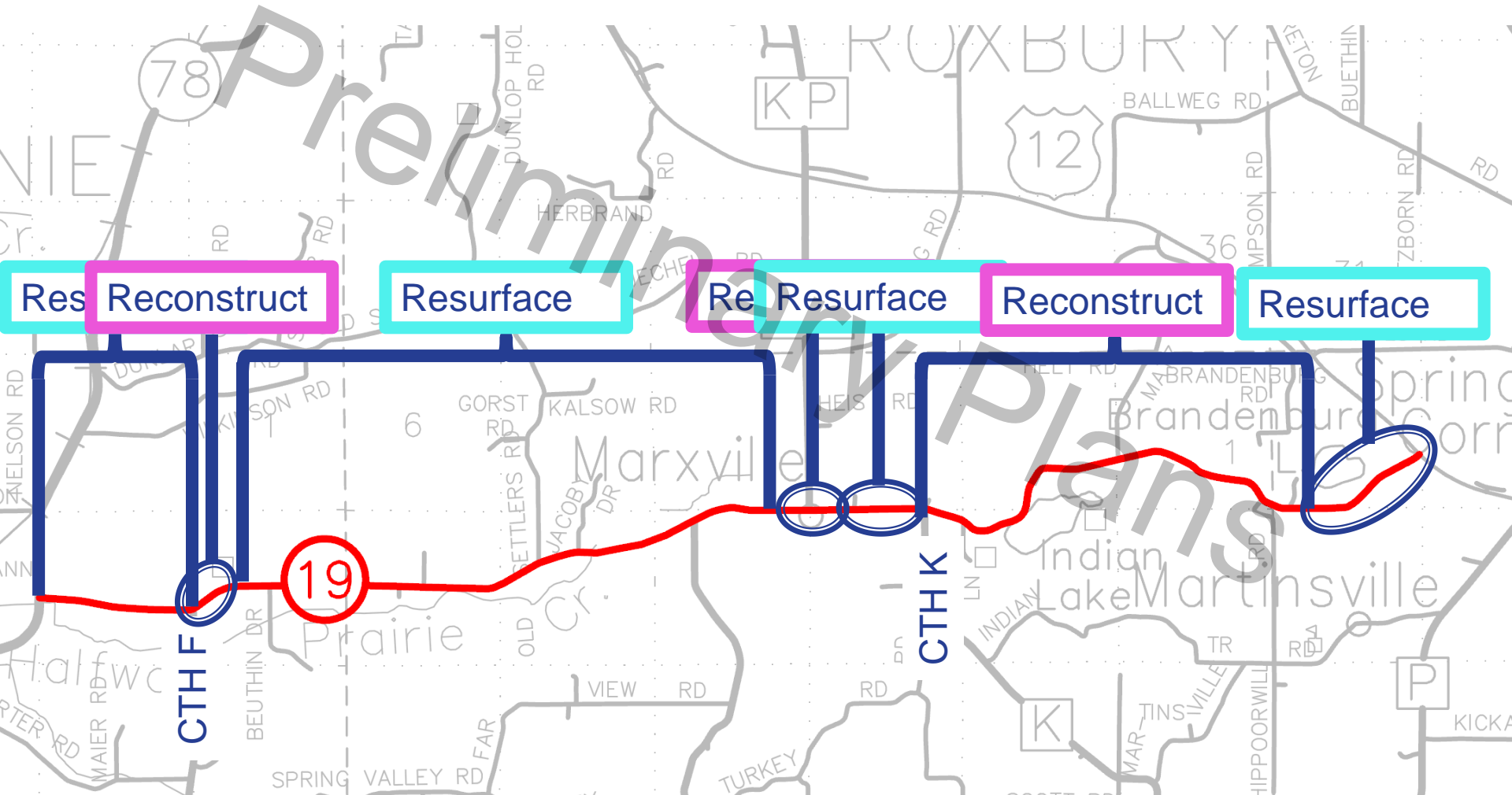
Project Purpose and Need

- **Safety Concerns**
 - **Blind vertical and horizontal curves leading to crash concerns**
 - **Narrow shoulder width**
 - **Ditches are not traversable**
- **Drainage Concerns**
- **Deteriorating Surface**
- **Bridges in Need of Replacement**



Design Overview

- Project Overview



Design Overview

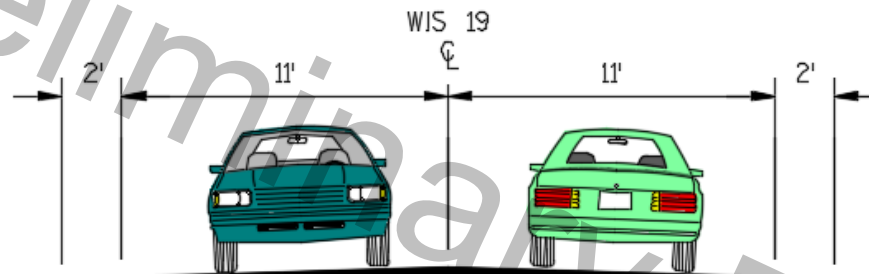
■ Rehabilitation Project

- **35% Reconstruct / 65% Resurface**
- **Geometric adjustments to improve safety**
- **Widening of shoulders for length of the project**
- **Improve drainage capability with new ditching**
- **Cost vs. Benefit consideration**



Design Overview

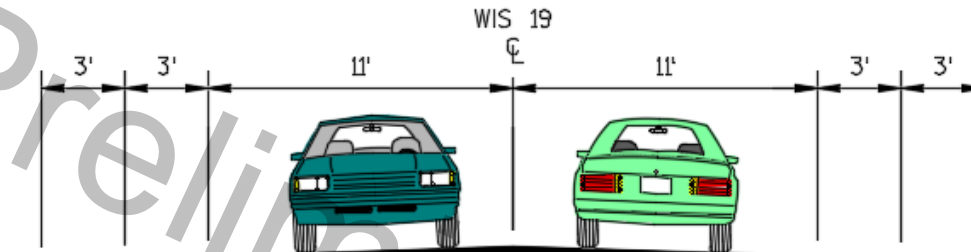
- Existing Typical Section



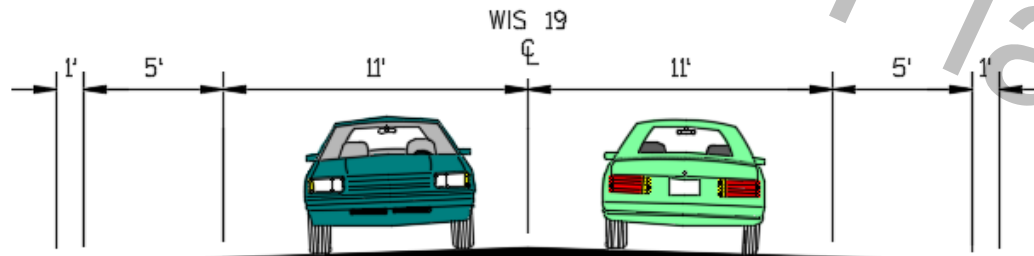
EXISTING TYPICAL SECTION

Design Overview

- Proposed Typical Section



PROPOSED TYPICAL SECTION FROM WIS 78 TO CTH K



PROPOSED TYPICAL SECTION FROM CTH K TO US 12

Design Overview

■ Benefits of Wider Shoulders

- Provides more space for farm equipment and other oversized loads
 - Increased safety for those deciding to pass these vehicles
- Increased safety for cars turning left or right
- Increased safety for bicyclists, pedestrians and motorists.
- Provides a safe area for broken down cars to pull over
- Provides a safe area for police to pull over speeding motorists



Design Overview

- WIS 78/WIS 19 Intersection





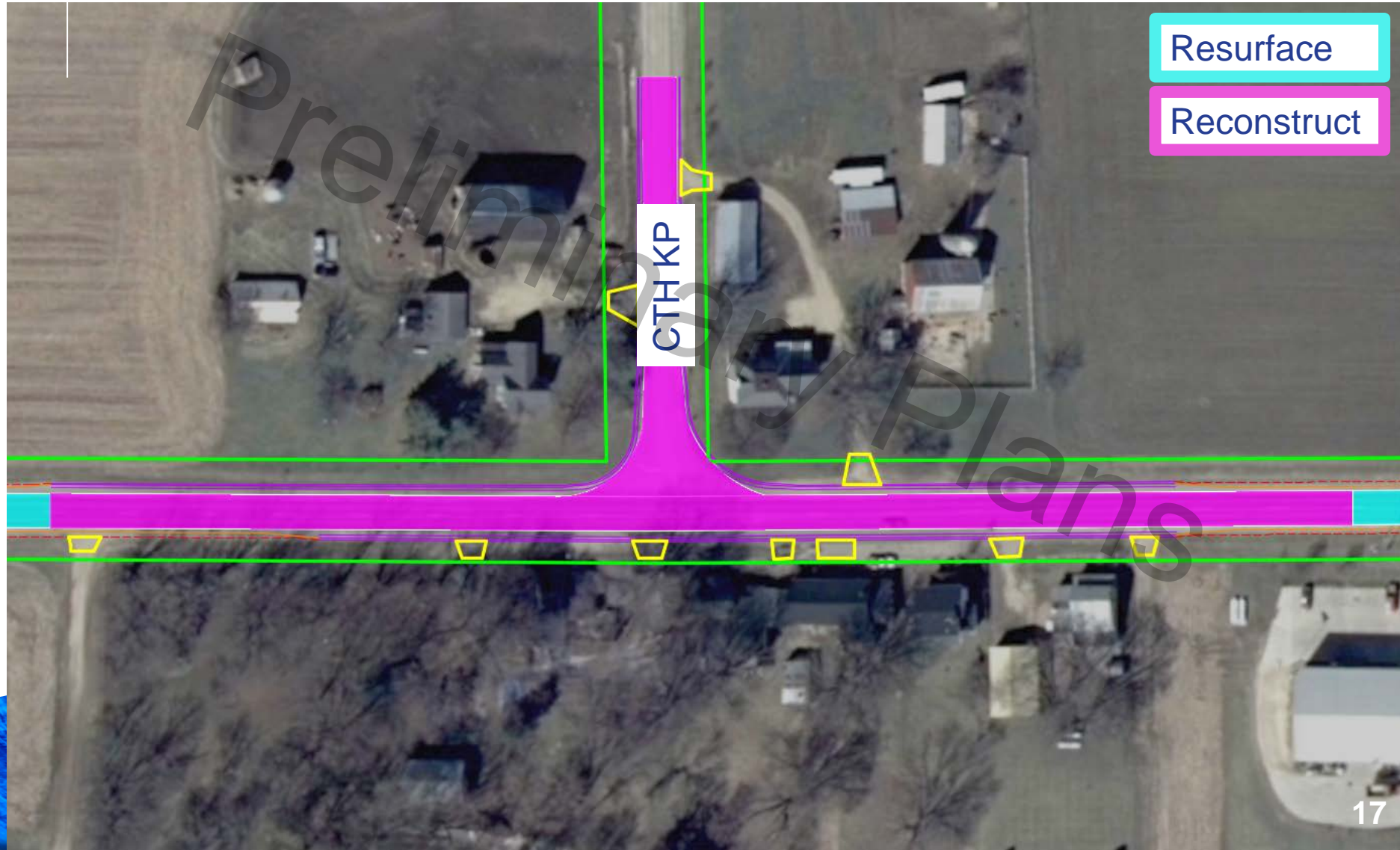
Design Overview

- Vertical and Horizontal Improvements Near CTH F



Design Overview

- Marxville Reconstruct



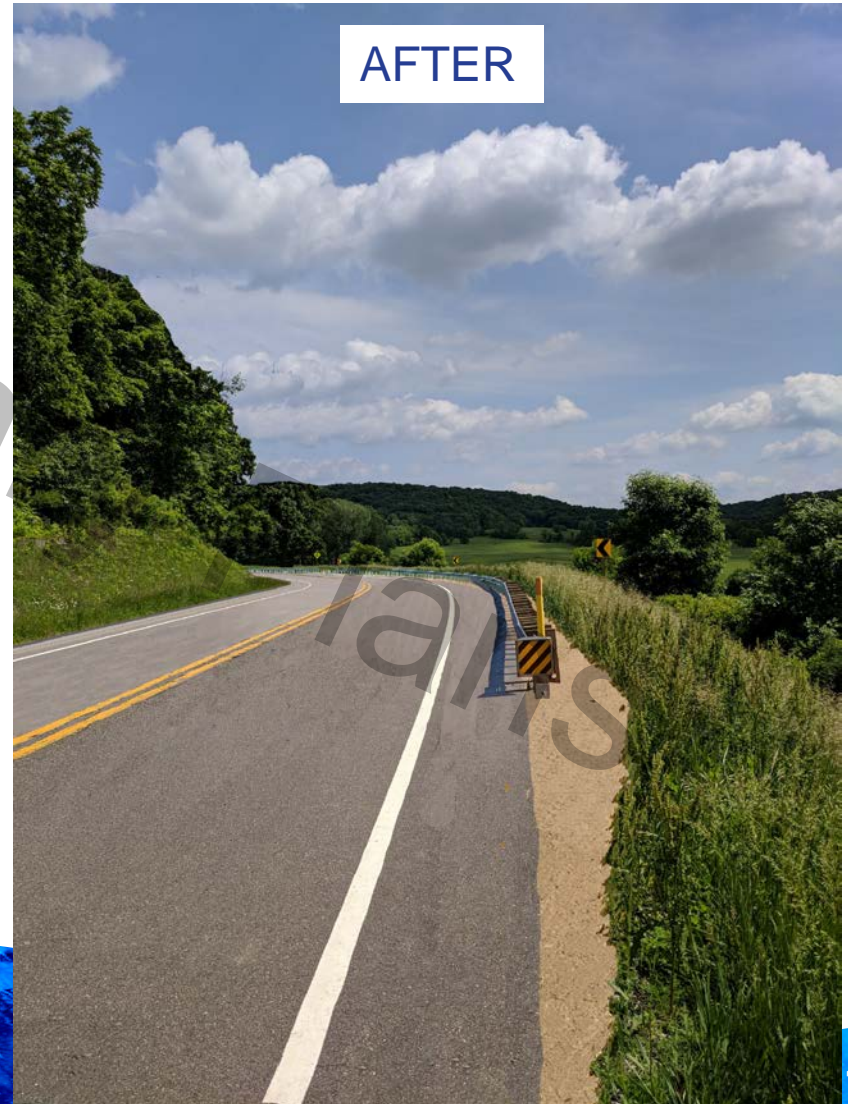
Design Overview

- Horizontal Improvements Near Indian Lake Park



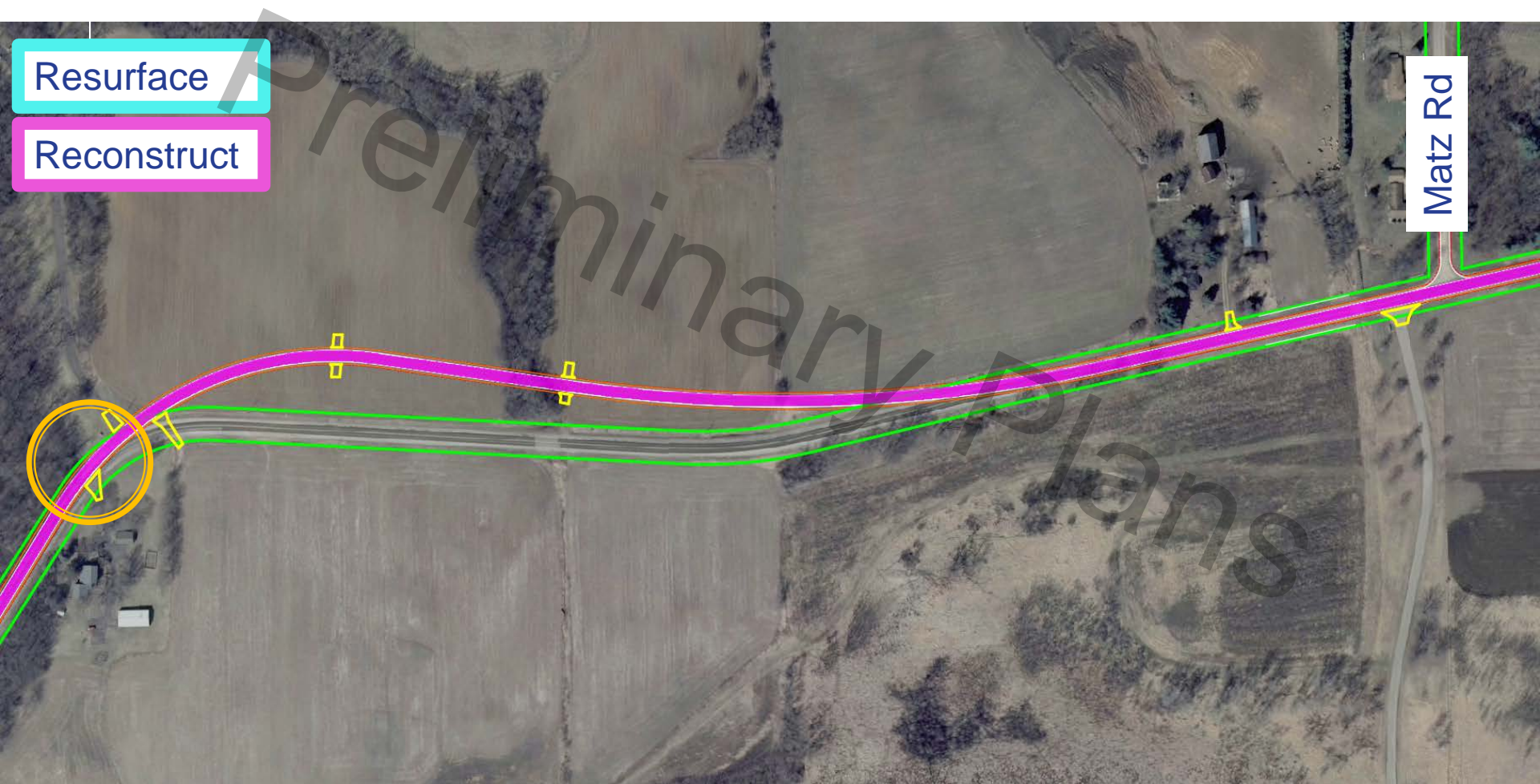
Design Overview

- Horizontal Improvements Near Indian Lake Park



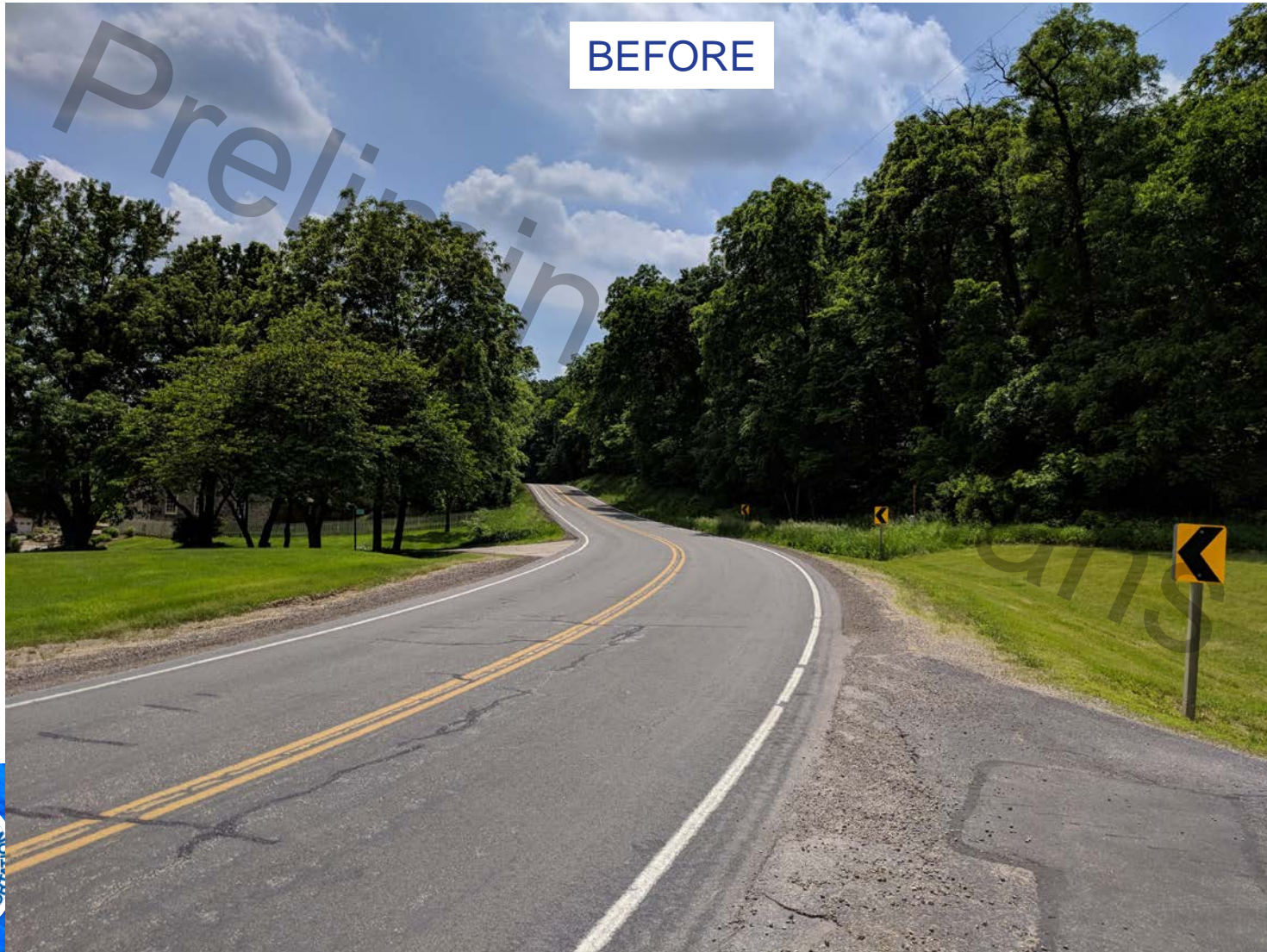
Design Overview

- Horizontal Curve Improvement and Pedestrian Underpass



Design Overview

- **Horizontal Curve Improvement and Pedestrian Underpass**



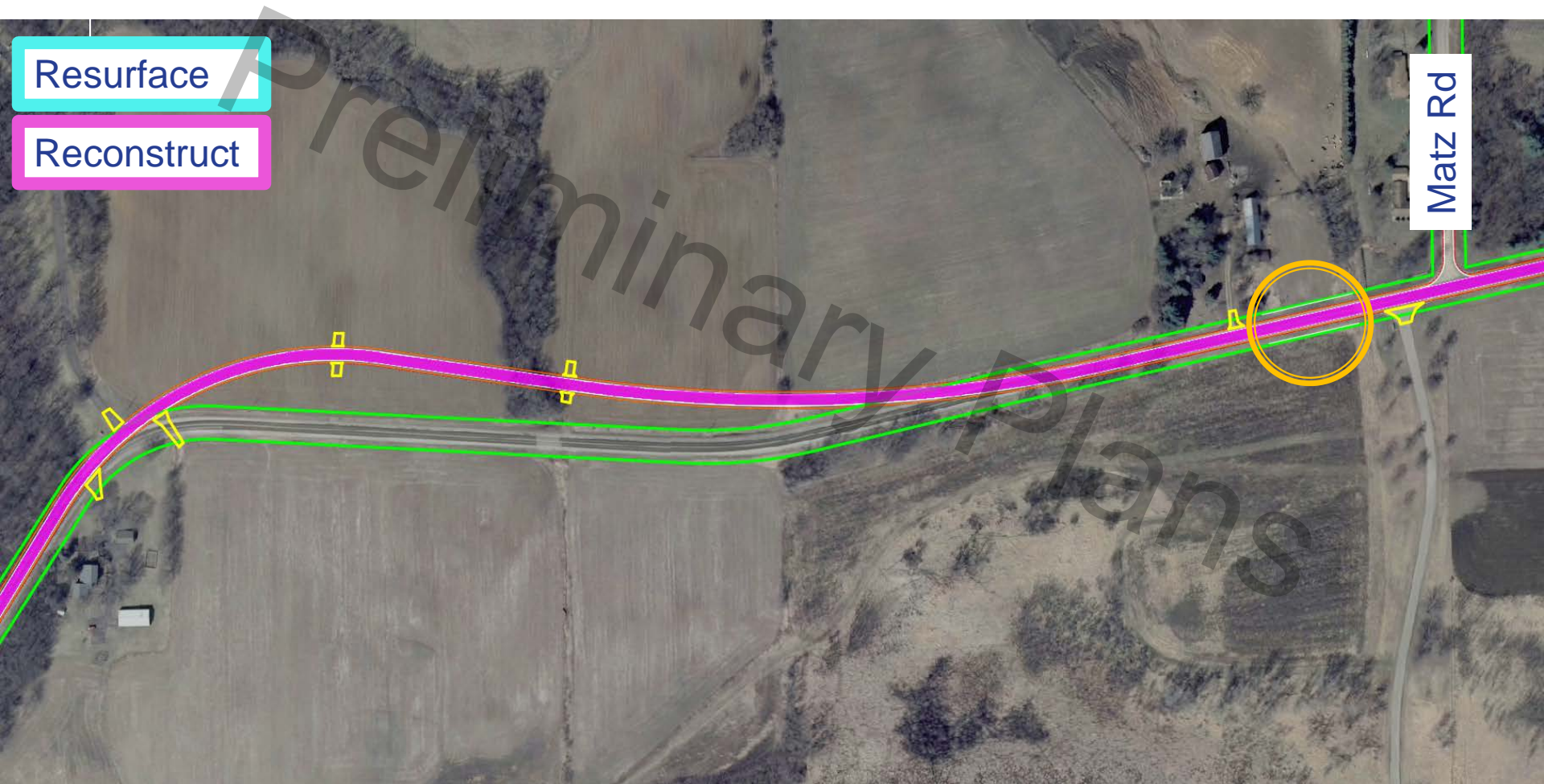
Design Overview

- **Horizontal Curve Improvement and Pedestrian Underpass**



Design Overview

- Horizontal Curve Improvement and Pedestrian Underpass



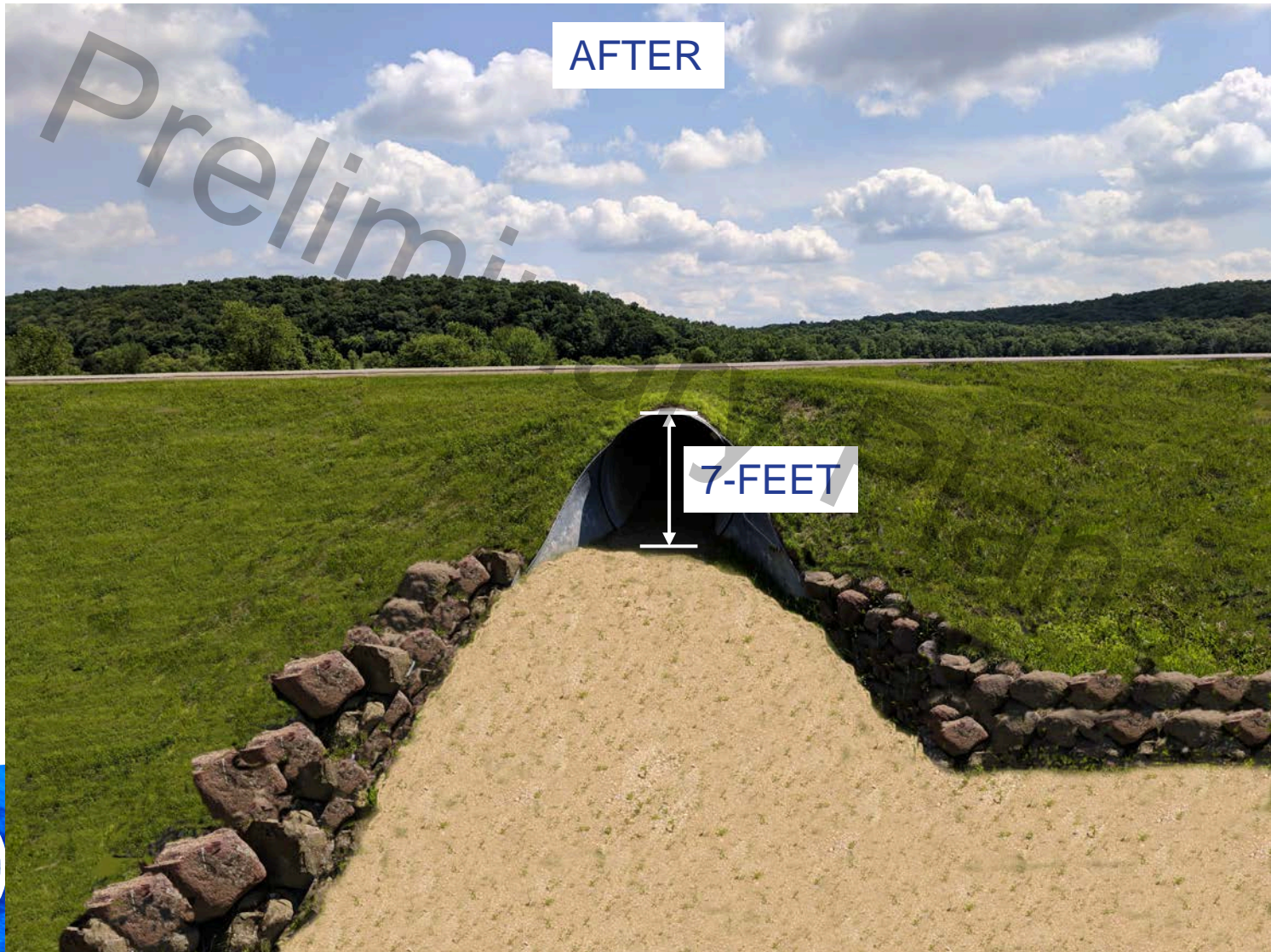
Design Overview

- **Horizontal Curve Improvement and Pedestrian Underpass**



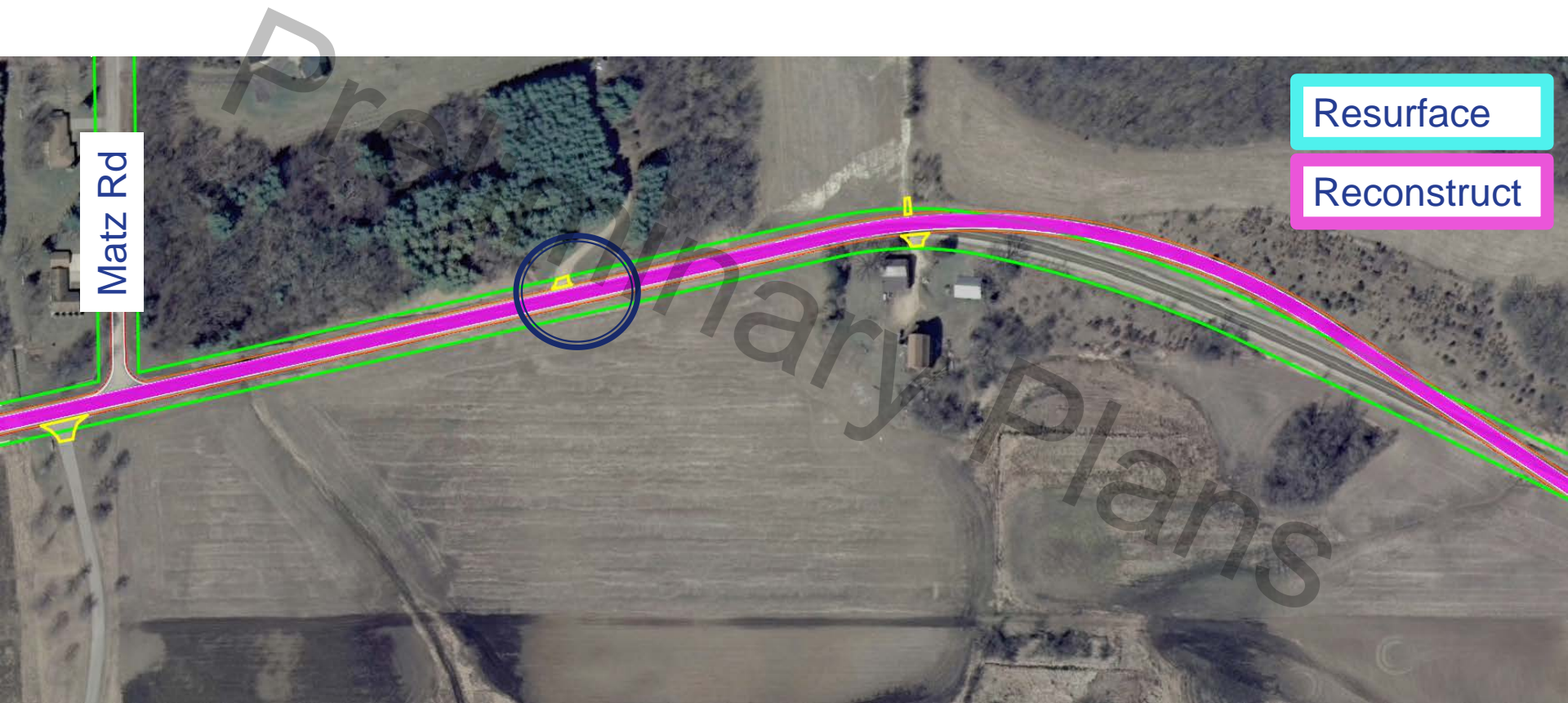
Design Overview

- Horizontal Curve Improvement and Pedestrian Underpass



Design Overview

- Vertical, Horizontal, and Drainage Improvements



EAST OF INDIAN LAKE ENTRANCE.
LARGE BOX CULVERT.



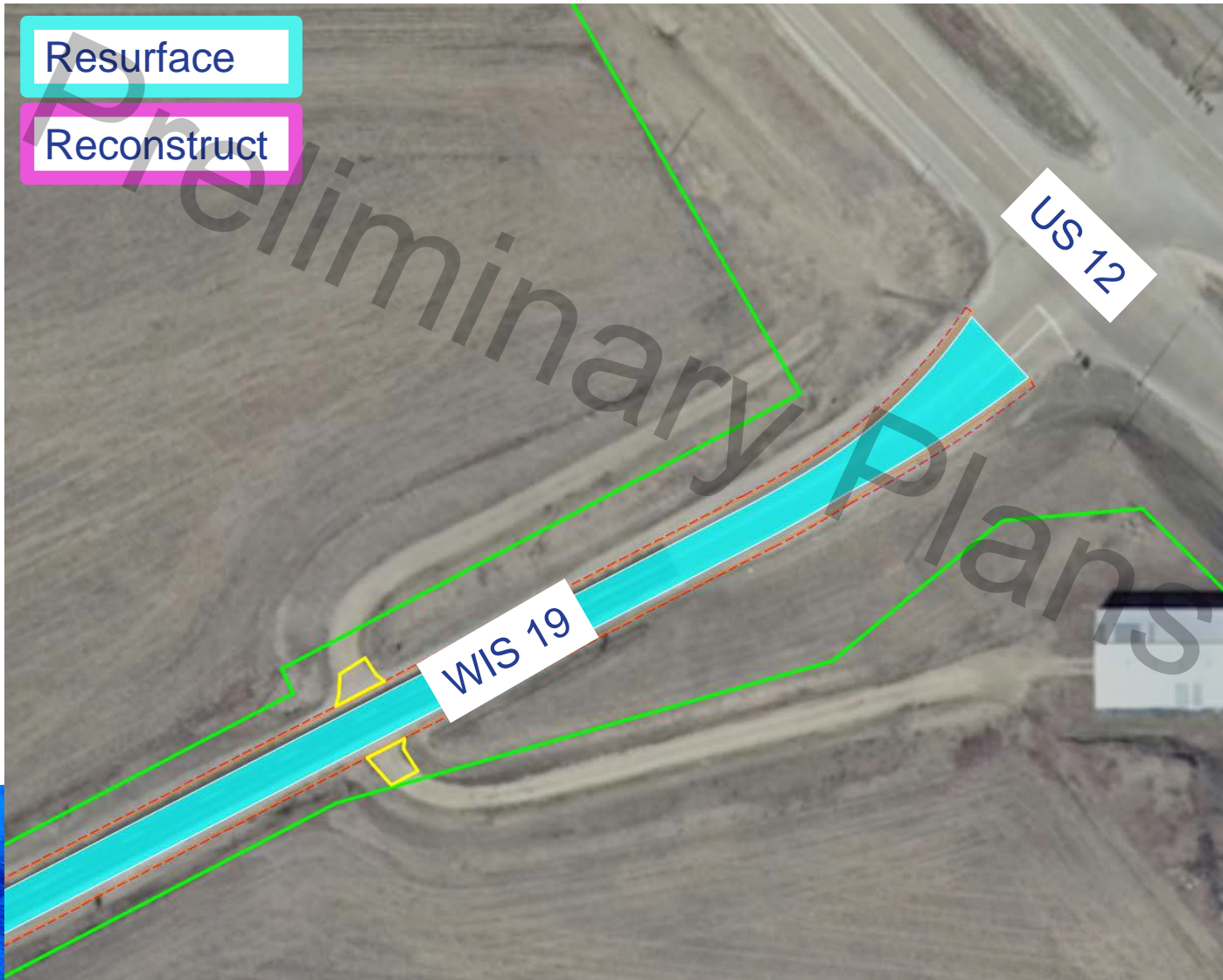
Design Overview

- Horizontal Curve Improvement and Pedestrian Underpass



Design Overview

- **WIS 19/US 12 Intersection**



Upcoming Schedule

- **Soil Testing** **Fall 2018**
- **Environmental Report Submittal** **February 2019**
- **Survey, Plat** **May 2019**
- **Public Involvement Meeting #2** **Tentatively May 2019**
- **Real Estate Acquisition** **Fall 2019**
- **Final Plans** **May 2021**
- **Construction** **Spring 2022**



Input Requested

- Drain Tile Locations
- Septic Tank Locations
- Drainage Issues
- Sensitive Installations, Trees, or Heirlooms

Preliminary Plans




Input 'Dot' Exercise

STEP 1 – Place number on the map.

STEP 2 – Write number and comment on form.



 **WIS 19 Rehabilitation Project**
Macomene to USH 12
Dane County
Input Form
July 19th, 2018

Place a numbered sticker on the map near the location for which you would like to comment. Write the sticker number in the box below and comment in the adjacent spaces:

<input type="checkbox"/>	_____
<input type="checkbox"/>	_____
<input type="checkbox"/>	_____
<input type="checkbox"/>	_____



Place a numbered sticker on the map near the location for which you would like to comment. Write the sticker number in the box below and comment in the adjacent spaces:

<input type="text" value="12"/>	_____



Thank you for your time

**Please fill out a comment form if
you have any questions or stop
by and talk to us.**

