



US 12

Wittig Road Intersection

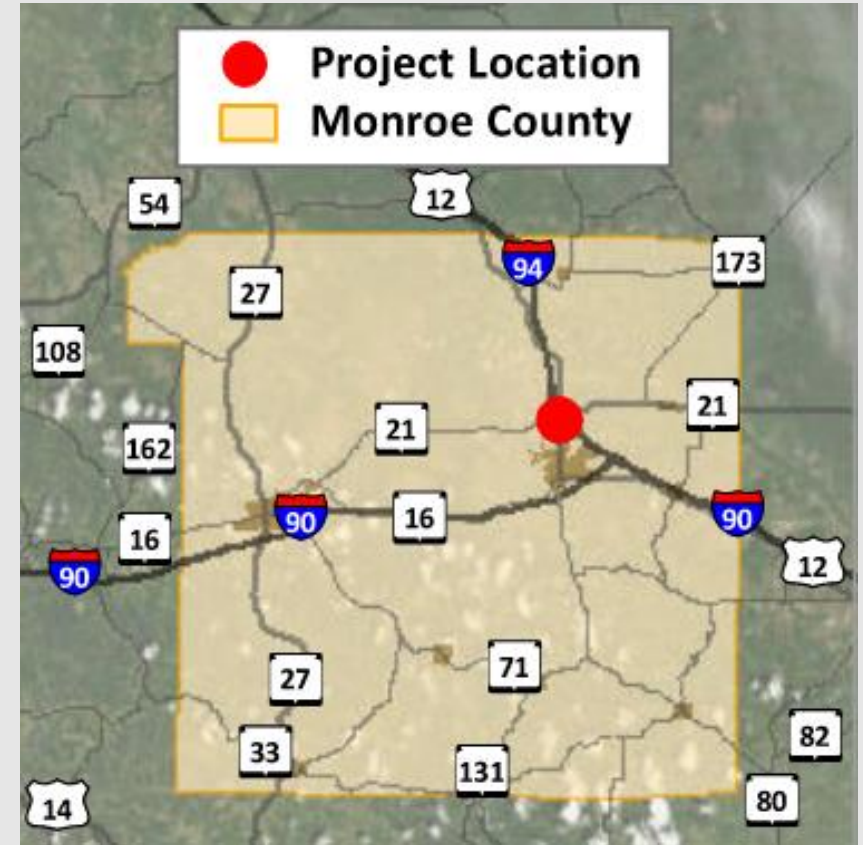
Jered Lex, PE

WisDOT Project Manager

Virtual Public Involvement Meeting

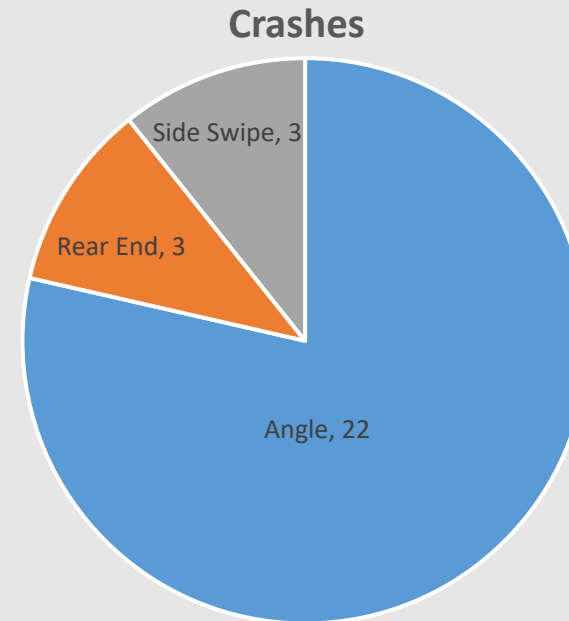
March 2022

Project Overview | Location



Project Overview | History & Need

- The intersection was identified in 2018 as a location with an elevated crash rate
 - 28 crashes reported from 2013 to 2017
 - 22 of those were angle crashes caused by a failure to yield the right-of-way
- Project approved for Highway Safety Improvement Program (HSIP) funding in 2020



Project Goal:

Improve Safety for Motorists



Project Purpose & Need

Safety Issues

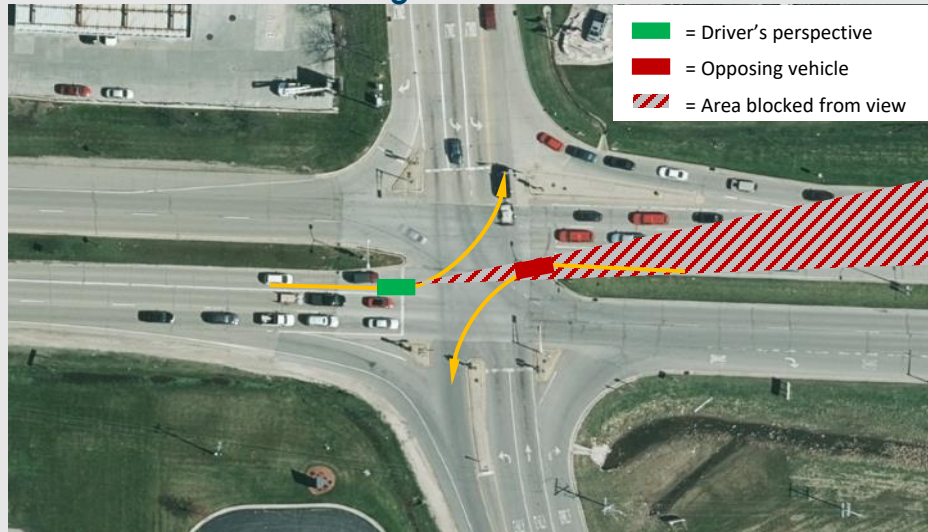
- Difficult for drivers to make side road crossing and turning movements
- High crash rate between turning and crossing vehicles with through vehicles
- Crashes related to drivers failing to yield the right-of-way



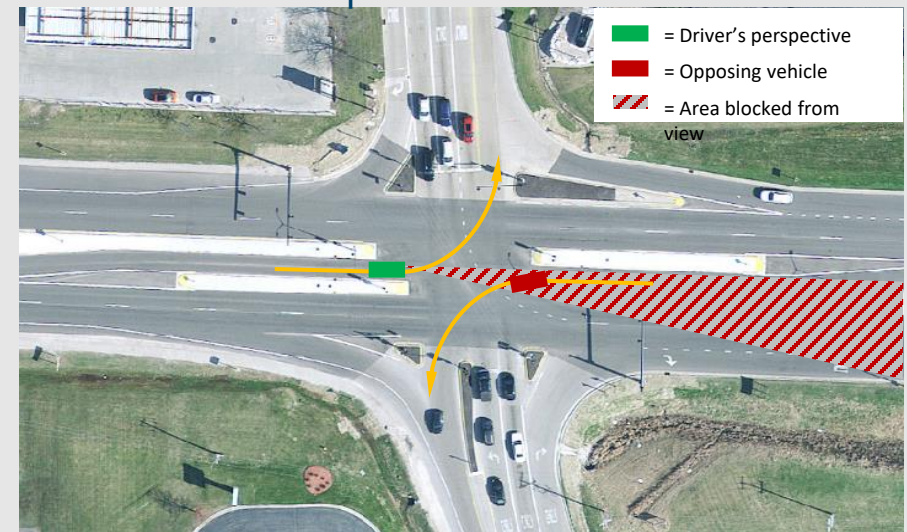
Project Overview | Proposed Improvements

- Reconstruct EB/WB US 12 turn lanes with “positive offset”
 - Positive left turn offsets allow drivers making opposing left turns to “see around” each other
 - Below is an example of a similar project

Before
“negative offset”



After
“positive offset”



Project Overview | Proposed Improvements

- Install traffic signals
 - A traffic signal will stop US 12 traffic and allow side street traffic to safely enter the intersection
 - US 12 will have a “signal head per lane” configuration to promote safety and decrease rear end collisions



Project Schedule

- ✓ Jul. 2021 : Field Survey / Project Review
- ✓ Oct. 2021 : Concept Layout
- ✓ Mar. 2022 : Public Involvement Meeting
- Oct. 2022 : Preliminary Plans (60%)
- Aug. 2023 : Pre-Final Plans (Pre-PS&E)
- Oct. 2023 : Final Plans (PS&E)
- Feb. 2024 : Project Letting
- 2024 : Construction



Construction

- US 12 to remain open to traffic during construction
 - Constructed with alternating inside/outside lane closures and short-term side road closures of left and through movements to facilitate median work
 - WIS 21 intersections with Buan Street and with Wittig Road will serve as alternate routes to access local businesses
 - 6-8 weeks of construction anticipated



Project Team Contact Information

Jered Lex

WisDOT Project Manager
Professional Engineer

Contact Information:

(608) 785-9956 | Jered.Lex@dot.wi.gov

Kevin Wehner

Consultant Project Manager – KL Engineering
Professional Engineer

Contact Information:

(608) 310-3840 | kwehner@klengineering.com

Joshua Mercier

Consultant Project Engineer – KL Engineering
Professional Engineer

Contact Information:

(608) 310-3817 | jmercier@klengineering.com



Thank You for Your Time

Your comments on this proposed project are much appreciated!



Comment forms are available on the project website.
The comment period will close on March 31, 2022.

