

USH 14 Resurfacing Project

County O to WIS 89

City of Janesville, Rock County

Public Involvement Meeting

December 2023



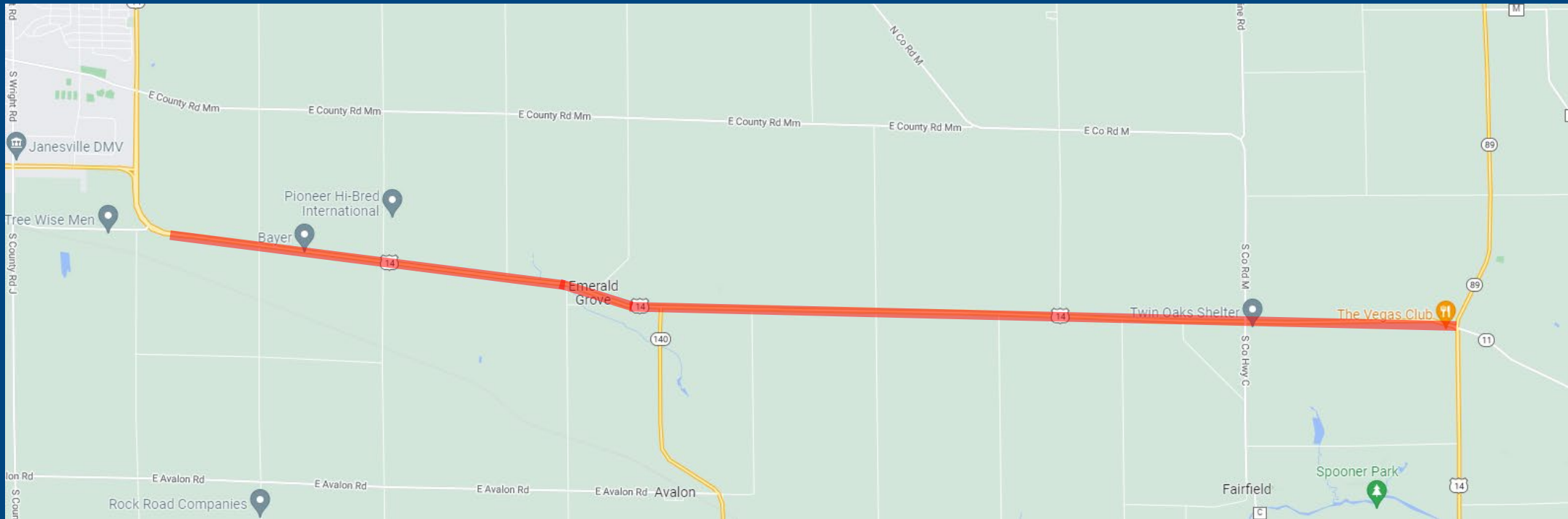
Project staff

- Matt Johnson, P.E.
 - Project Leader
- Chris Hazard, P.E.
 - Project Manager
- Jim Simpson, P.E.
 - Project Supervisor



Project limits

0.3 miles east of County O to WIS 89



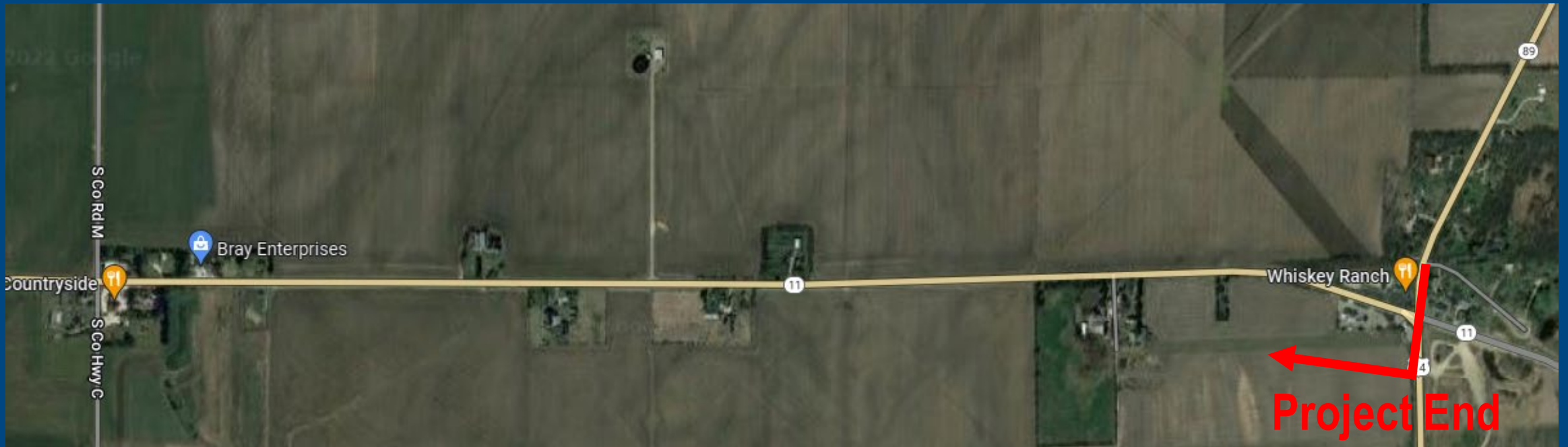
Project limits

0.3 miles east of County O to WIS 89



Project limits

Project end – WIS 89



Roadway conditions

US 14 – existing conditions

- Traffic
 - 9,720 – Average Daily Traffic
 - Truck % – 13.5%
- Pavement
 - Two 12-foot travel lanes
 - 6-foot shoulders (3-foot paved and 3-foot aggregate)
- Safety
 - HSIP approval for safety improvements because of sight distance issues at three intersections



Purpose and need

US 14 pavement

- Pavement Deterioration
 - Rutting
 - Longitudinal cracking
 - Fatigue cracking



Design overview

Proposed details

- Mill and remove 3-inches of existing asphalt pavement
- Replace with 4-inches of new asphalt pavement
- Replace all pavement markings with some adjustments
- Intersection improvements at Tarrant Road, Avalon Road and County C/County M
- Cross drain repair and/or replacement



Design overview

Proposed details

- Tarrant Road
 - Westbound right-turn lane



Design overview

Proposed details

- Tarrant Road
 - Westbound right-turn lane



Design overview

Proposed details

- Avalon Road
 - Westbound left-turn lane



Design overview

Proposed details

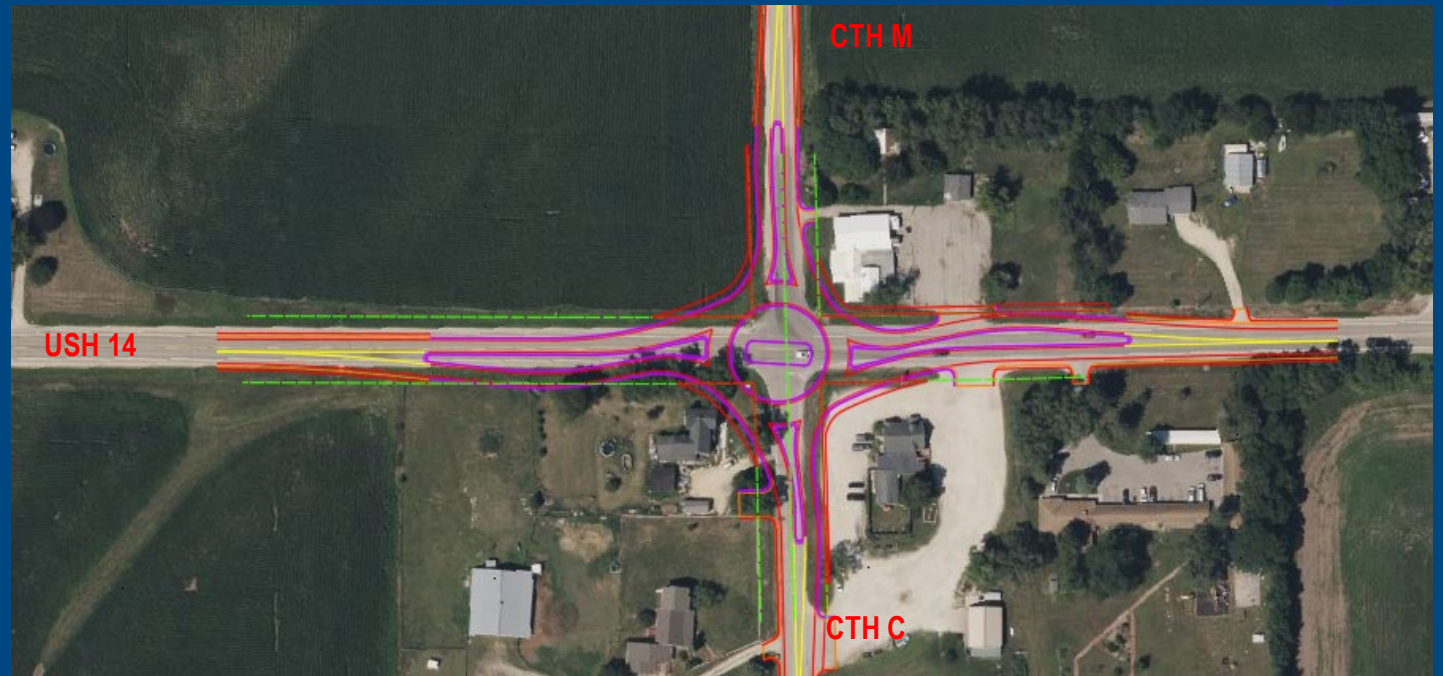
- Avalon Road
 - Westbound left-turn lane



Design overview

Proposed details

- County C and County M
 - Roundabout



Design overview

Proposed details

- Four culvert pipes are being worked on near the Rock County line



Construction traffic impacts

Staged under flagging

- Traffic will still be able to access US 14
- Construction stages will be used to complete project
- Advanced signing and portable changeable message boards used to communicate with motorists when a change in the staging will occur
- Access to all businesses will be maintained to the greatest extent possible.

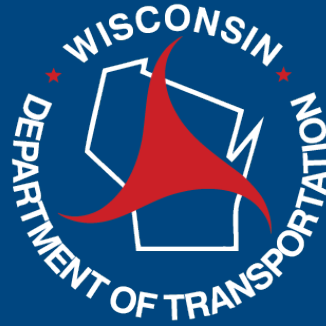


Project details

Real estate and schedule

- Real Estate
 - Real estate acquisition is expected for widenings at Avalon Road and Tarrant Road for turn lanes
 - Real estate acquisition is expected for the roundabout at County C and County M
 - Landowners impacted will be contacted with further details in the future
- Schedule
 - Real estate acquisition begins – Spring 2025
 - Out for bid – February 2028
 - Construction – Summer 2028





Thank You For Your Time!

Question or concerns?

Project website: <https://wisconsindot.gov/Pages/projects/by-region/sw/us14-janesville/default.aspx>

Contact Chris Hazard, Project Manager

By Mail: 2101 Wright Street, Madison WI 53704

By Email: christopher.hazard@dot.wi.gov

By Phone: (608) 245-2652

