



WELCOME

US 18/151 (County G to WIS 69) PUBLIC INVOLVEMENT MEETING

The Wisconsin Department of Transportation is preparing plans to improve US 18/151 by adding safety and operation improvements along US 18/151 between Verona Ave and CTH G including auxiliary lanes and interchange improvements.



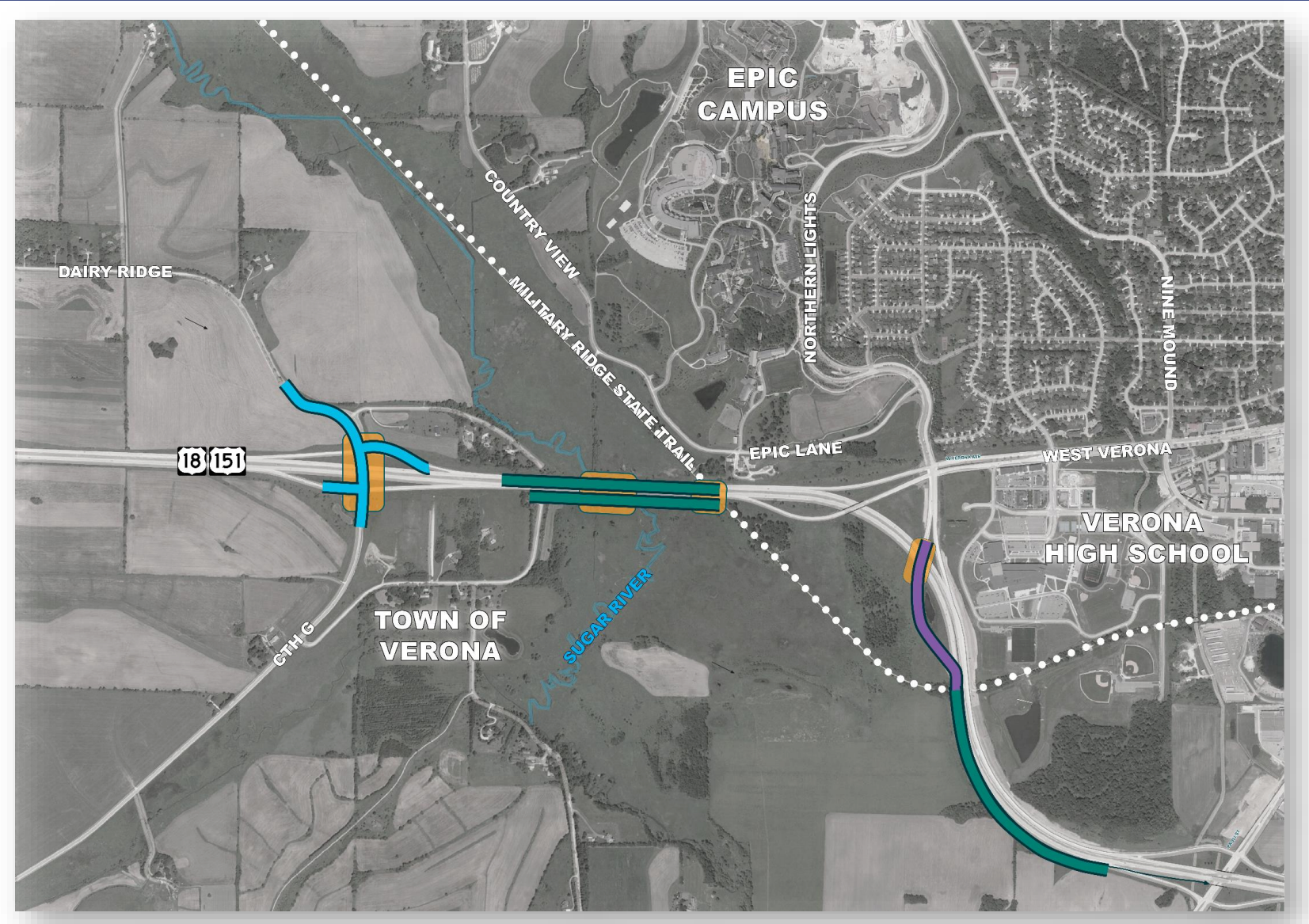
Meeting Agenda

US 18/151 (County G to WIS 69) Public Meeting



- Project Overview
- Purpose and Need
- Alternatives
- Proposed Improvements
- Schedule
- Next Steps / Contact Info

Project Overview



Project Overview

OVERALL PROJECT GOALS:



**IMPROVE
SAFETY**

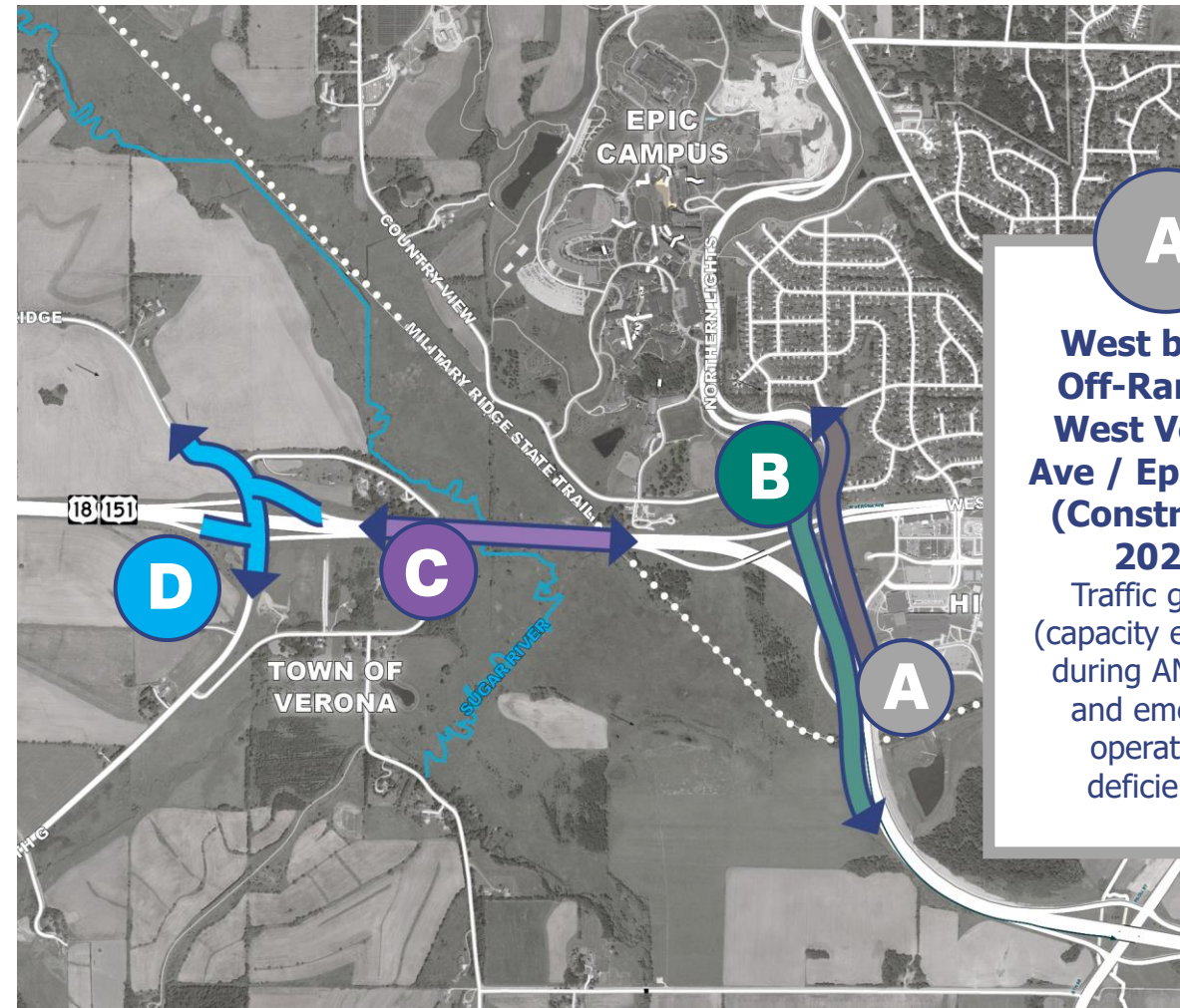


**REDUCE
TRAFFIC
CONGESTION**



**ACCOMMODATE
PAST AND
FUTURE GROWTH**

Purpose and Need



A

**West bound
Off-Ramp at
West Verona
Ave / Epic Lane
(Constructed
2022)**

Traffic growth
(capacity exceeded
during AM peak)
and emerging
operational
deficiencies

B

**East bound
On-Ramp at
West Verona
Ave / Epic Lane**

Traffic growth
(capacity exceeded
during PM peak)
and emerging
operational
deficiencies

C

**County G to
West Verona
Ave Corridor**

Traffic growth and
emerging operational
deficiencies

D

**County G / Dairy
Ridge Road
Interchange**

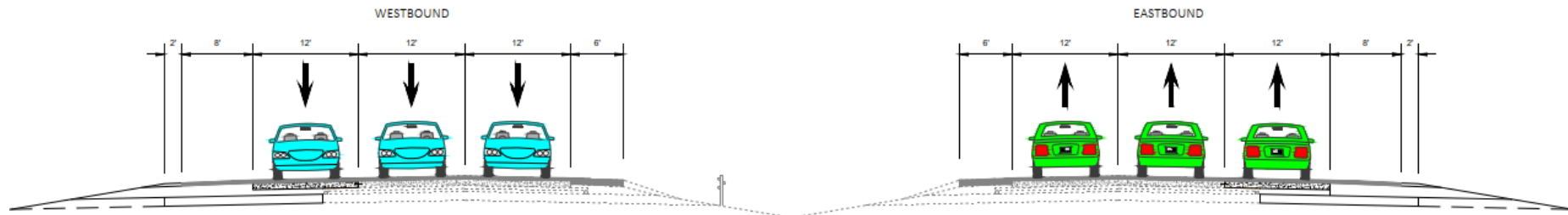
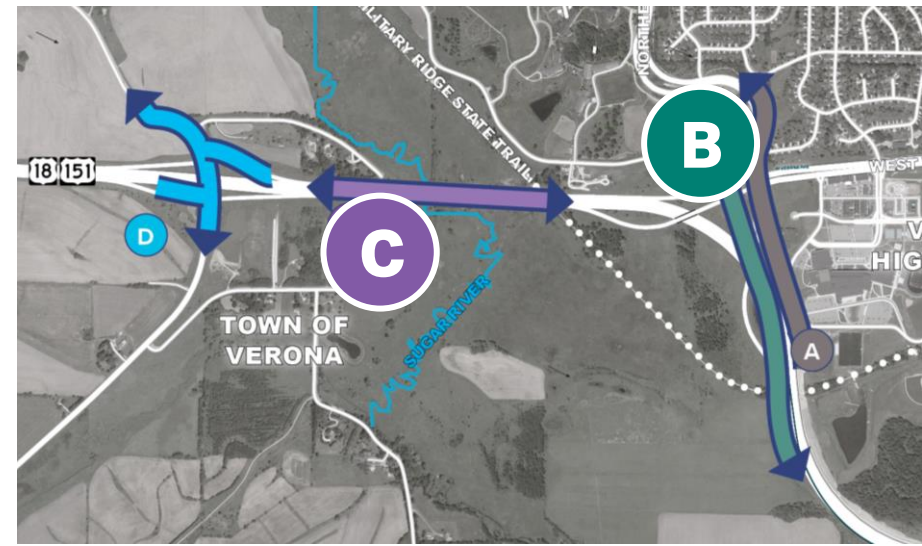
Traffic growth and
emerging operational
deficiencies

Alternatives

Auxiliary Lanes



- **No Build**
 - No change, routine maintenance only
 - Concerns with queuing and difficulty with weaving/merging
- **Add Auxiliary Lanes**
 - **EB & WB between County G & Verona Ave and between Verona Ave & WIS 69**



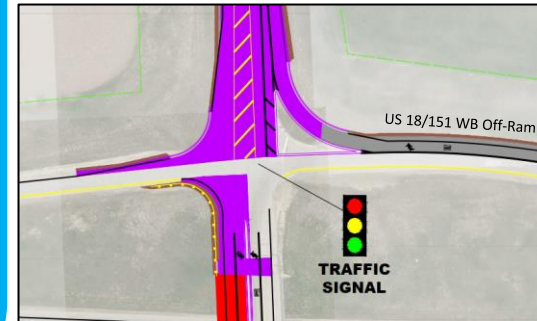
CTH G Interchange Alternatives – WB Ramp (North Intersection)

Intersection Control Evaluation (ICE)

D

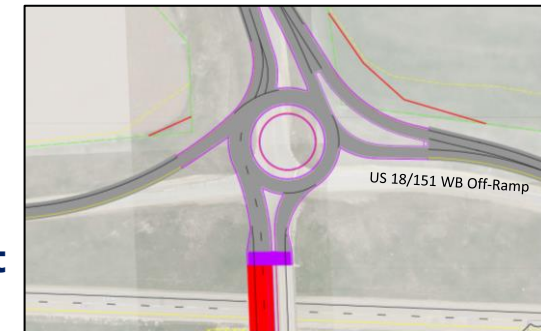
1. Side-Road Stop Control (Existing)
2. Traffic Signal (Includes single free flow right turn lane) – Preferred
3. Roundabout (2-Lane Southbound)

Side Road
Stop Control
(Existing)



Traffic Signal
Alternative

Roundabout
Alternative



CTH G Interchange Alternatives – EB Ramp (South Intersection)

Intersection Control Evaluation (ICE)

D

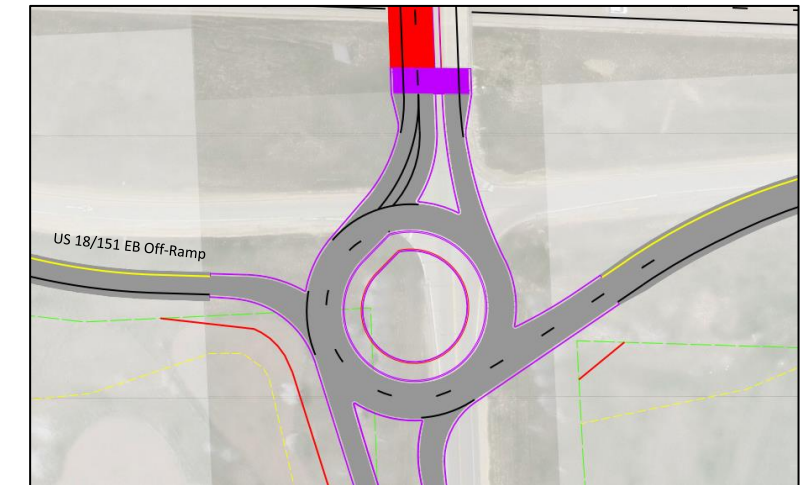
1. Side-Road Stop Control (Existing) – Preferred

2. Traffic Signal

3. Roundabout (2-Lane Southbound)



Side-road Stop Control Alternative

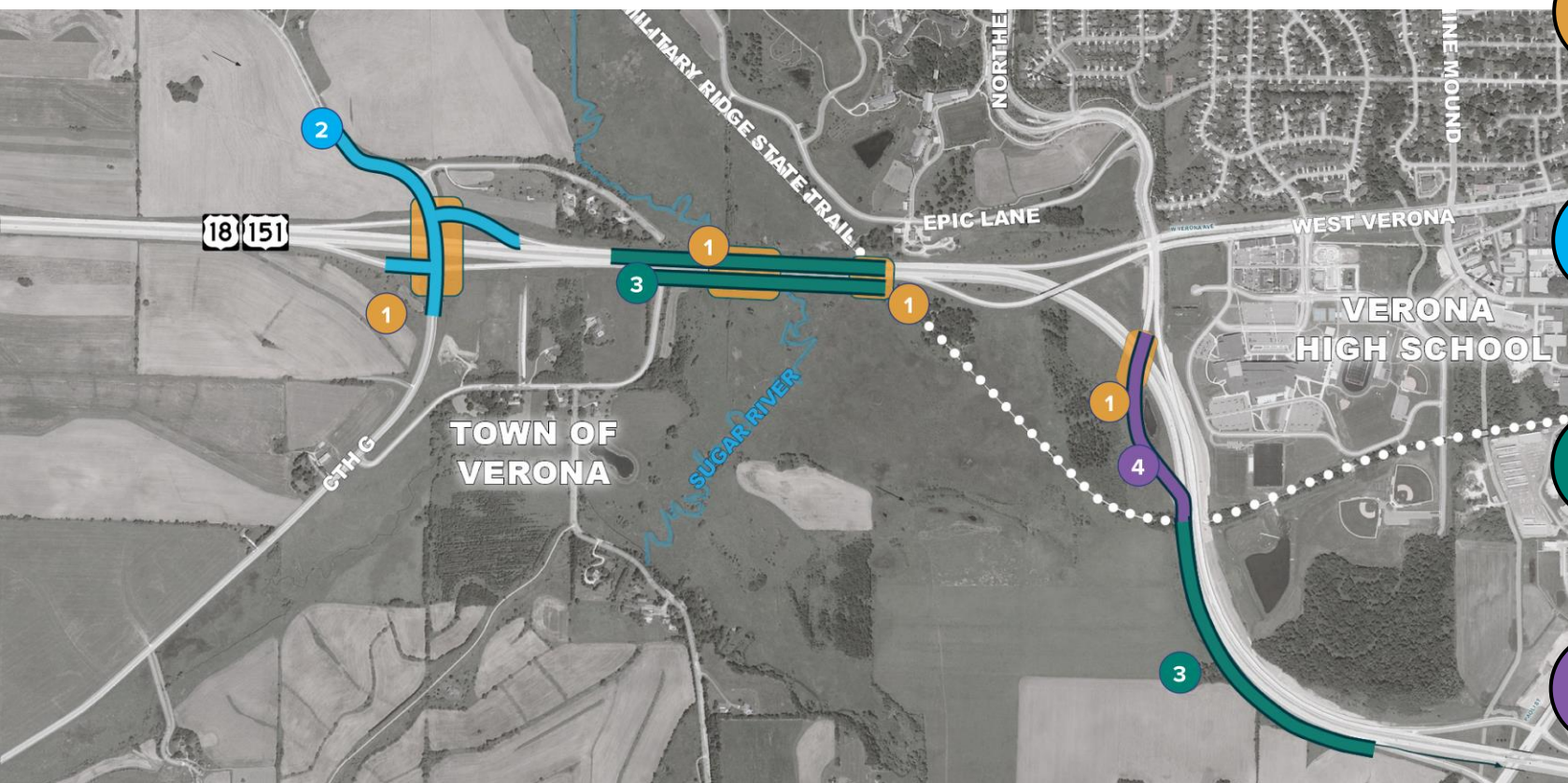


Roundabout Alternative

Proposed Improvements

US 18/151 project will address traffic growth and emerging operational deficiencies.

Build Alternatives:



1

BRIDGE WIDENINGS

County G, US 18/151 over Sugar River, West Verona Ave on ramp, and the Military Ridge State Trail Bicycle/Pedestrian box culvert

2

COUNTY G/DAIRY RIDGE ROAD INTERCHANGE

Ramp terminal intersection improvements

3

AUXILIARY LANES

Add auxiliary lane both EB and WB between County G interchange & W Verona Ave interchange and EB between W Verona Ave and WIS 69

4.

WEST VERONA AVE INTERCHANGE

A second lane is proposed to the EB on-ramp from Verona Ave to US 18/151

Schedule

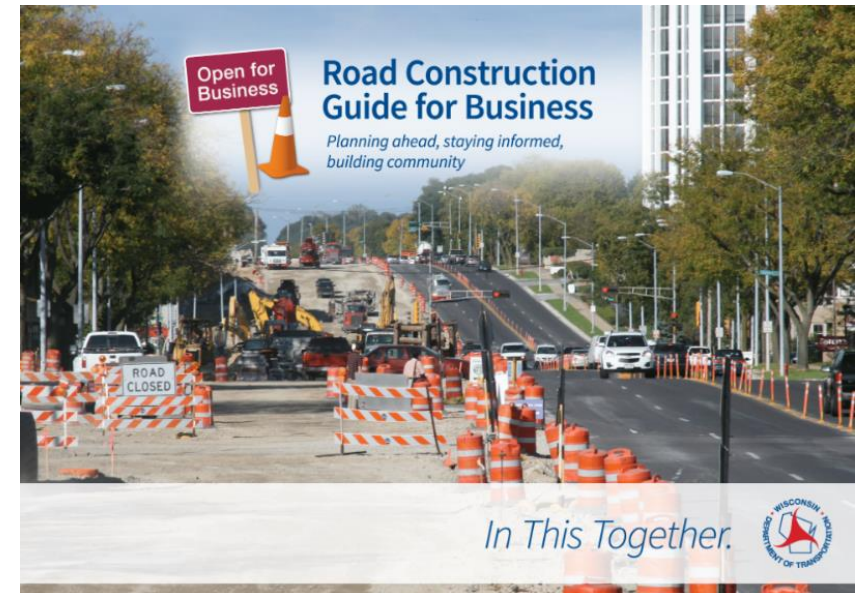
PROJECT SCHEDULE:



Business Coordination

We're in this together!

- Visit wisconsindot.gov/together
 - Tips, tools and resources
 - Business coordination guide
- Project team is here to help
 - What information would help you...
 - Inform customers about the project?
 - Coordinate with suppliers?
 - Communicate with employees?



Contact

Questions?

Contact:

Kevin Drunasky

WisDOT Project Manager
(608) 246-3811

Kevin.drunasky@dot.wi.gov

OR

Zach Larson

Consultant Project Manager
(715) 340-3796

zachary.larson@aecom.com

Check out the project website at <https://tinyurl.com/h3n2u2k3>

