

Pedestrian and Bicycle Facilities

CROSSWALK LOCATIONS

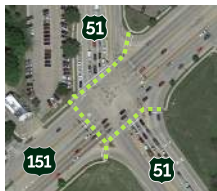
EXISTING MARKED CROSSWALK
 Marked crosswalk at three locations in the study corridor



KINSMAN BLVD



ANDERSON ST

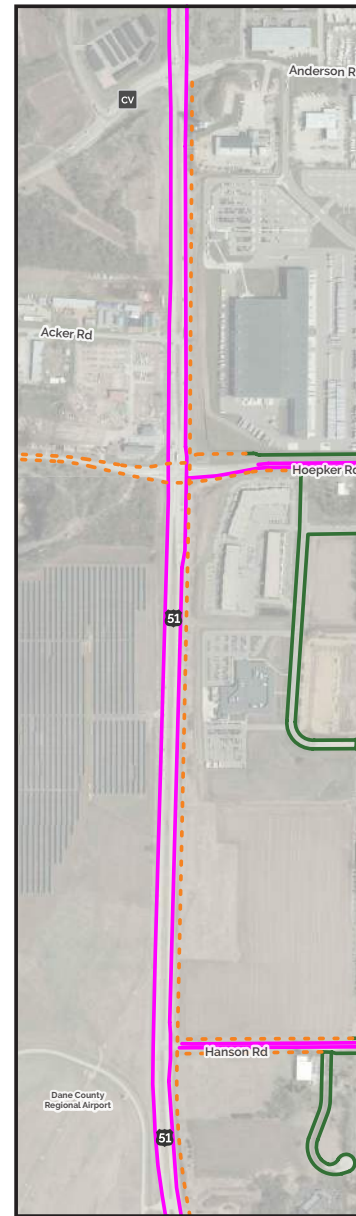
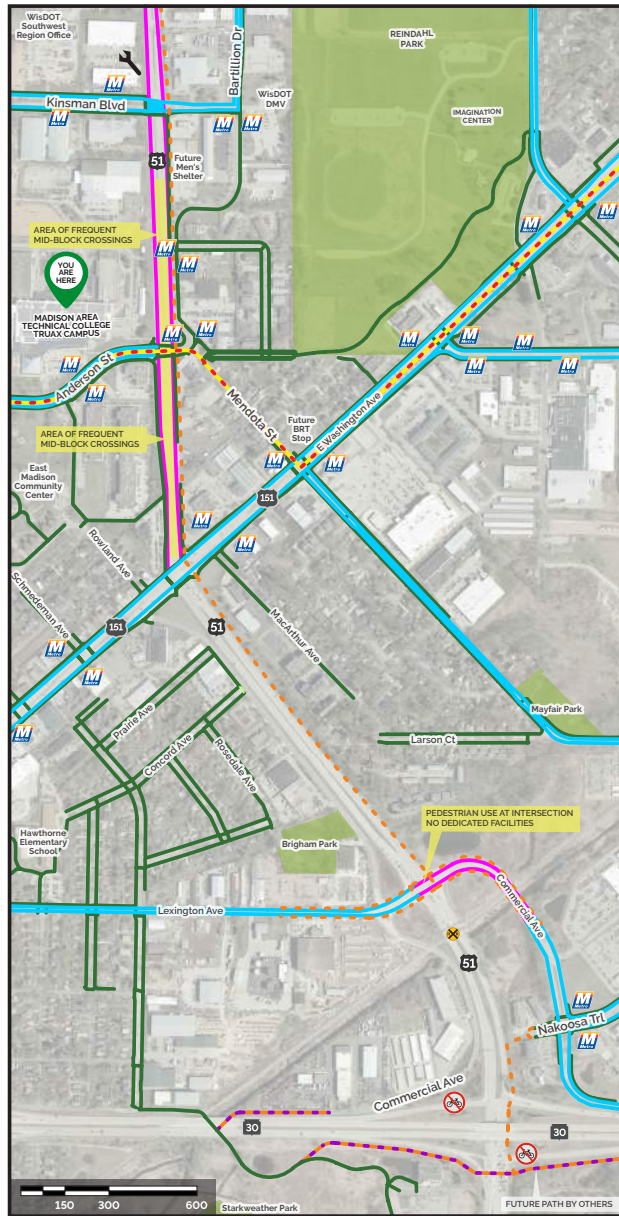


US 151 / E WASHINGTON AVE

BICYCLE/PEDESTRIAN CRASHES:

From 2017-2021, there were three documented pedestrian or bicycle crashes within the study area:

1. Between US 151/East Washington Avenue and Anderson Street
2. Bicycle crossing the East Washington Avenue westbound right-turn lane to get to the porkchop island
3. North leg of the Anderson Street intersection



LEGEND

- Existing Pedestrian Facilities
- Existing Bicycle Facilities
- Existing Paved Shoulder
- Proposed Future Bike/Ped. Facilities*
- Path Planned by Others
- Future Bus Rapid Transit Route
- Madison Metro Bus Stop
- Bicycle Repair Station
- Bicycles Prohibited

SHARE YOUR THOUGHTS

Bicycle and Pedestrian Accomodations

place sticky note here

*Proposed facilities shown include full pedestrian accommodation at US 51 intersections with Lexington/Commercial, East Washington Avenue, Anderson Street, Kinsman Boulevard, and Hoepker Road. Sidewalks are proposed on Hanson Road east of US 51. A shared use path is proposed on the east side of US 51 the full length of the corridor. Additional facilities, such as bicycle lanes, to be determined as concepts are refined.