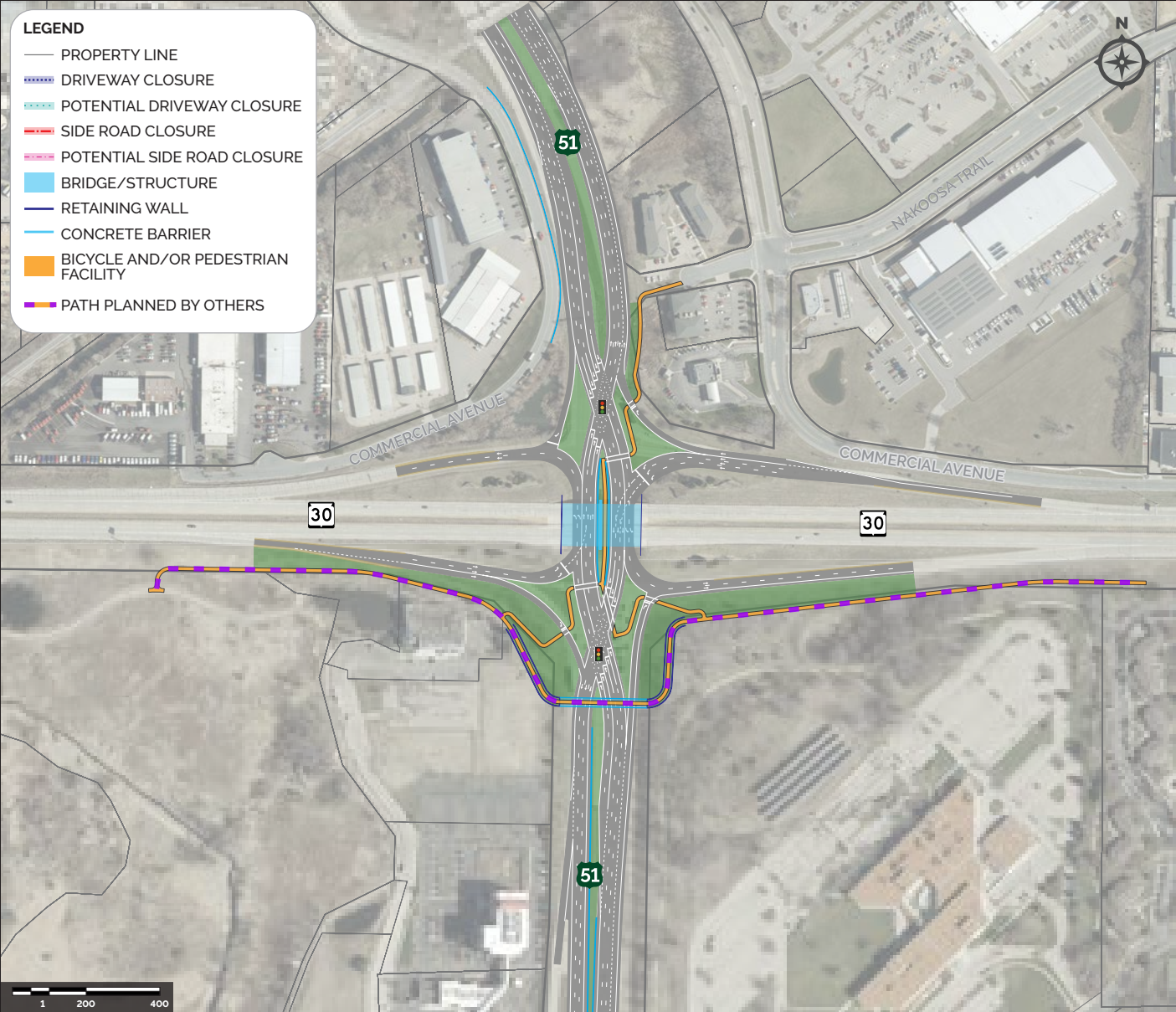


1 US 51 and WIS 30: Diverging Diamond Interchange (DDI)



Concept Overview:

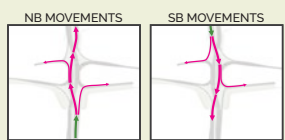
- A DDI is a grade separated interchange where the traffic on Stoughton Road would cross to the left side of the roadway between the ramps at WIS 30
- The crossing traffic allows for vehicles along US 51 to freely turn left without crossing opposing lanes of traffic.

Pros

- Utilizes existing bridges
- Improves overall operations at the interchange because traffic entering and exiting WIS 30 no longer has to cross opposing lanes of traffic.
- Reduces conflict points versus the traditional diamond interchange*

Cons

- Reduces speed along N. Stoughton Road
- Restricts through movement at the interchange ramp termini
- Non-traditional movements along N. Stoughton Road through the interchange



*Conflict points define situations where vehicles, bicycles, and/or pedestrians intersect at a point in space.

Number of lanes, length of turn lanes, and other geometric elements are conceptual and may not reflect final design.