



US 51 (STOUGHTON ROAD) SOUTH CORRIDOR STUDY

Public Involvement Meeting #1





Presentation Overview



- Study Overview
- Existing Conditions
- Draft Purpose and Need
- Study Schedule
- Next Steps





Study Overview



US 51 South Study Area

Corridor Limits

Voges Rd./Terminal Dr. to South of WIS 30

Corridor Length

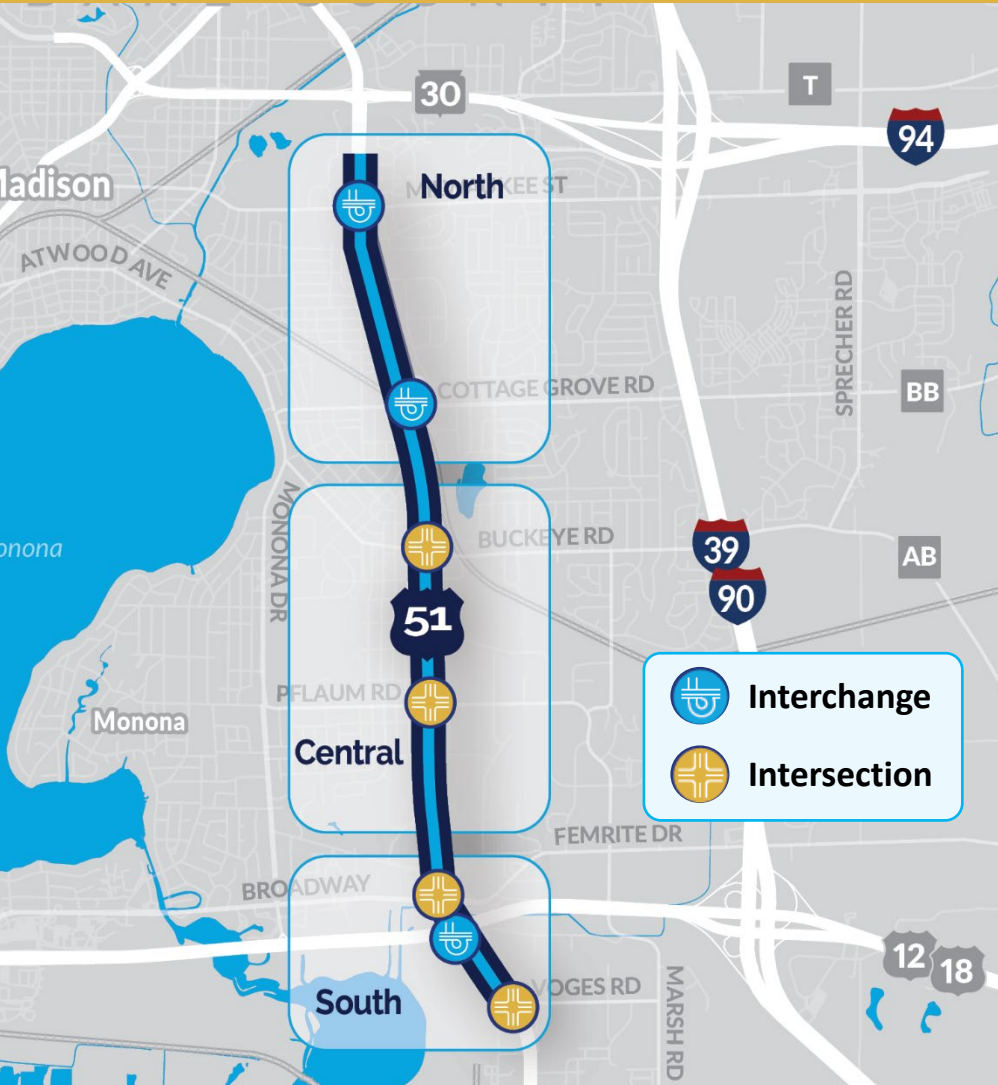
4.7 Miles

Municipalities:

City of Madison, City of Monona, Village of McFarland, Town of Blooming Grove



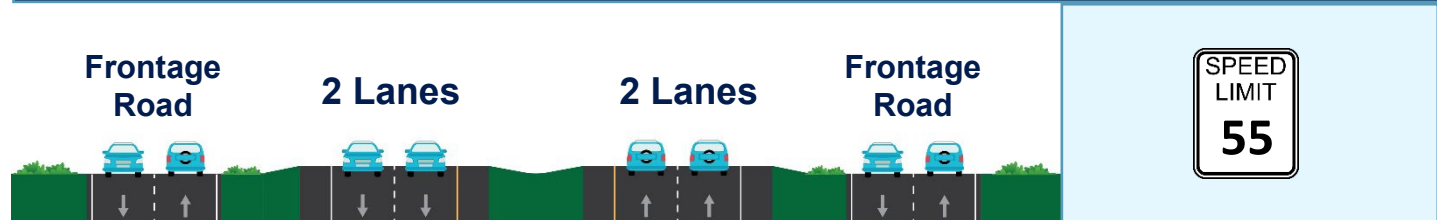
Existing Corridor



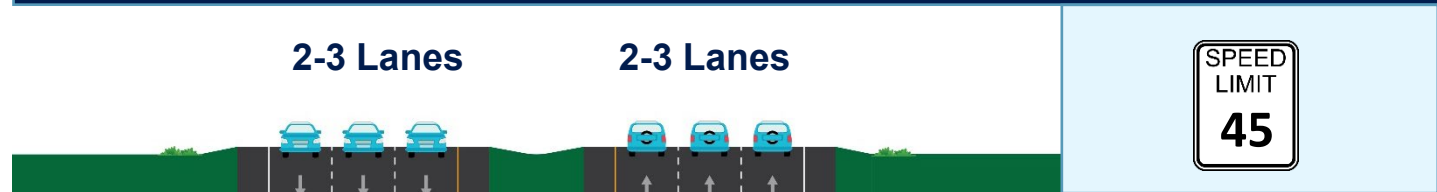
North Section



Central Section



South Section



Surrounding Area Land Use



Dense and diverse development makes US 51 a **vital corridor** for many and acts like a **barrier** for others



Existing and Future No Build Evaluations



Safety



**Traffic
Operations**



**Access
Spacing**



Geometrics



**Bicycle /
Pedestrian**



Drainage



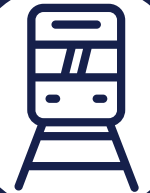
Pavement



Structures



Land Use



Transit



Draft Purpose Statement

The purpose of the US 51 South Study is to improve safety and mobility for all modes of travel and enhance community cohesion while considering local community plans and goals for the corridor.



Summary of Draft Needs



Safety Issues

High number of crashes at US 51 intersections and safety concerns for all modes of travel



Inadequate Mobility

Poor operations and long backups at US 51 intersections

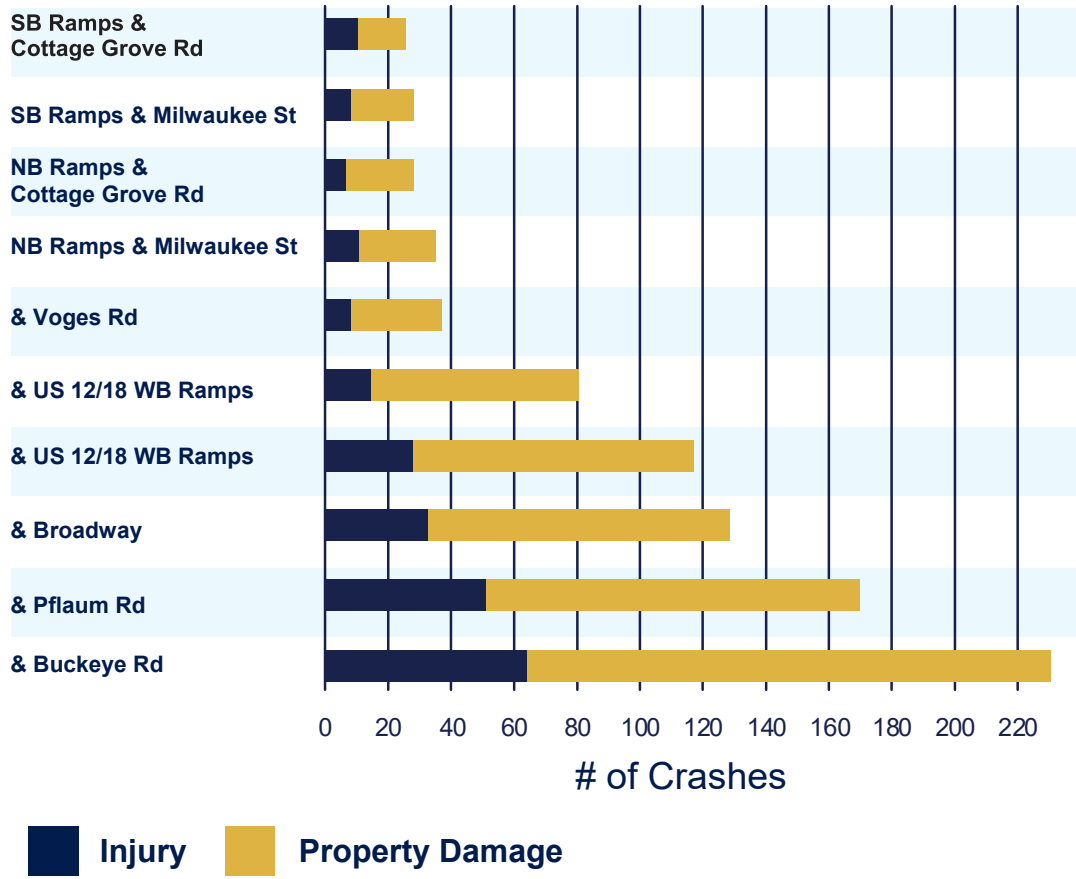


Poor Connectivity

US 51 can act as a barrier, with limited east-west crossings

Safety: Vehicle Crashes

Intersection Crashes from 2017 to 2021: US 51 ...



2017 to 2021 Crash Statistics

1,236

crashes occurred in the study area

4

fatal crashes

345

injury crashes

83%

of crashes occurred at intersections

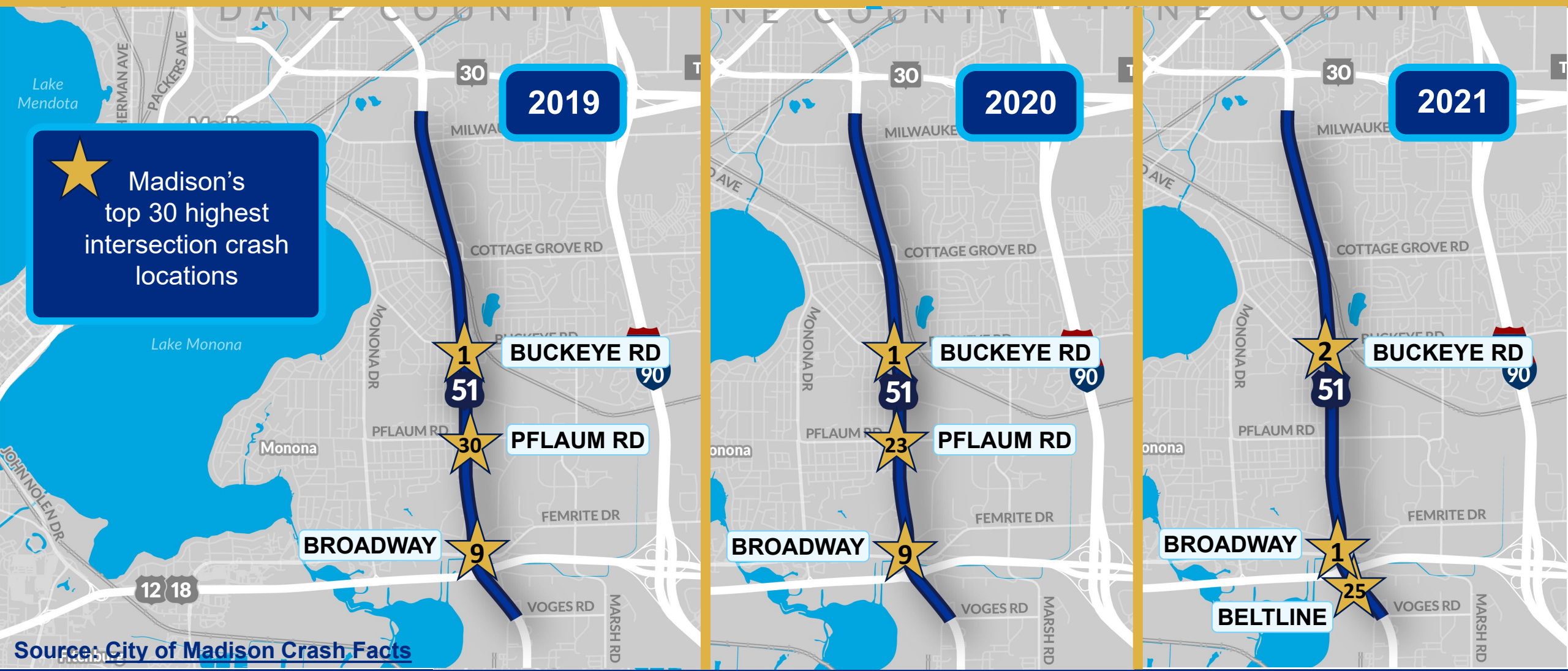
54%

of crashes were rear ends

Section from
US 12/18 to Buckeye Rd
has **over 2x** more crashes than the statewide average for similar corridors

Safety: Vehicle Crashes

★ Madison's top 30 highest intersection crash locations



Source: City of Madison Crash Facts





Safety: Bicycle and Pedestrian



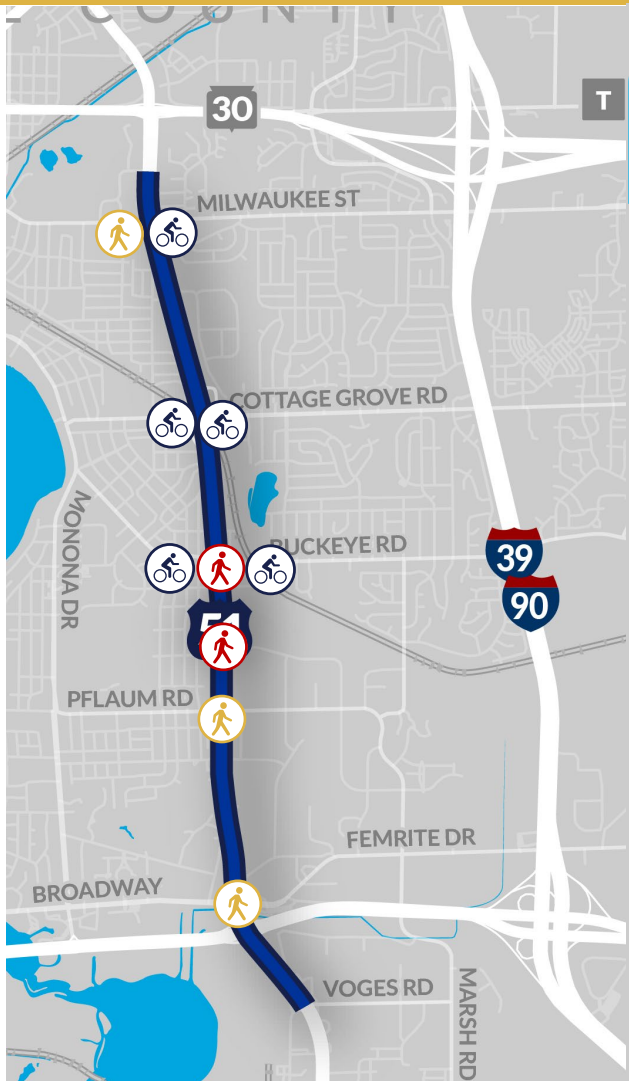
Bus stops and shared-use paths bring multimodal traffic to US 51

Pedestrians and bicyclists would need to **travel along the shoulder** for most of the US 51 corridor

Lack of facilities makes it less safe to walk or bike along US 51



Safety: Bicycle and Pedestrian

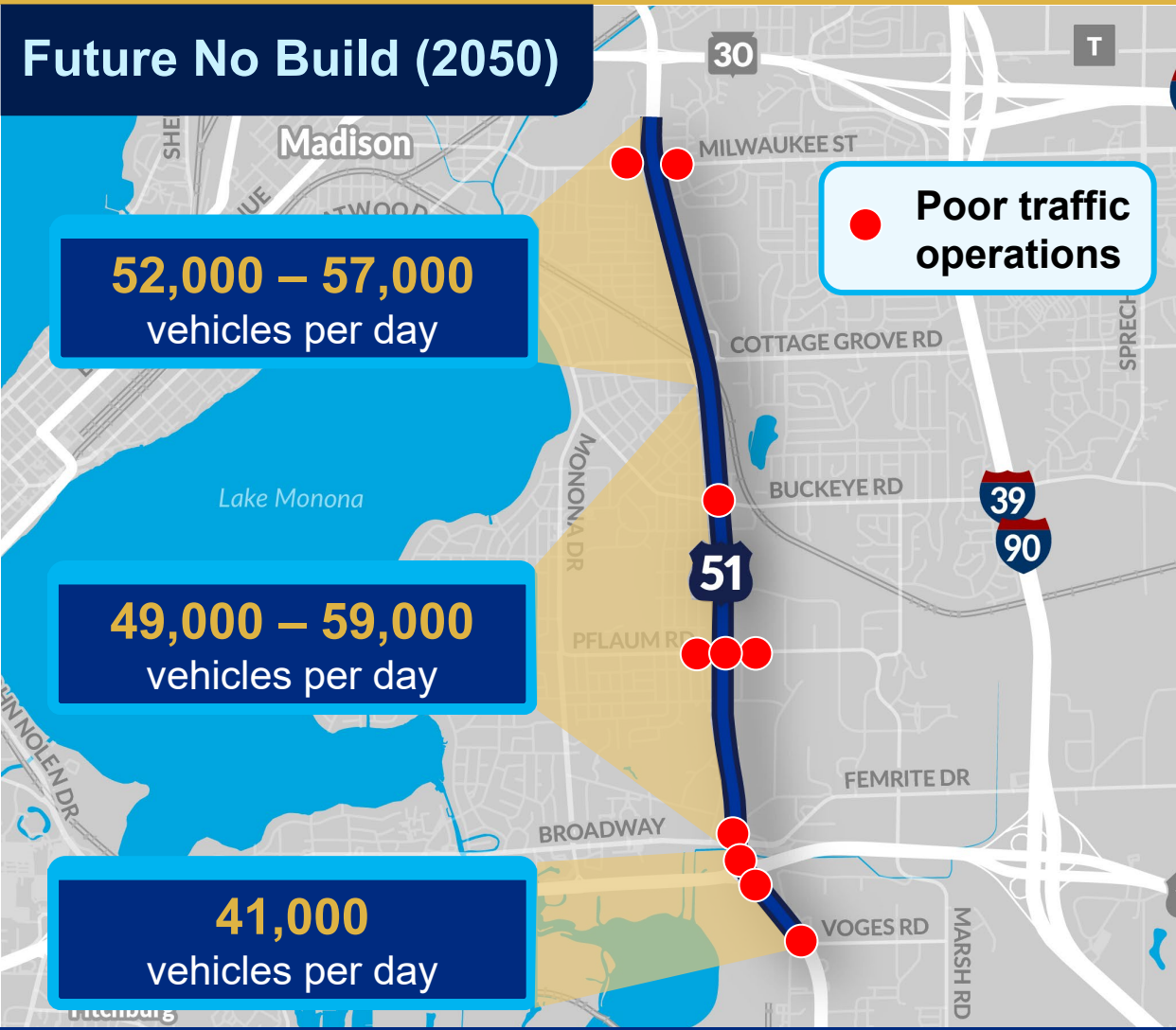
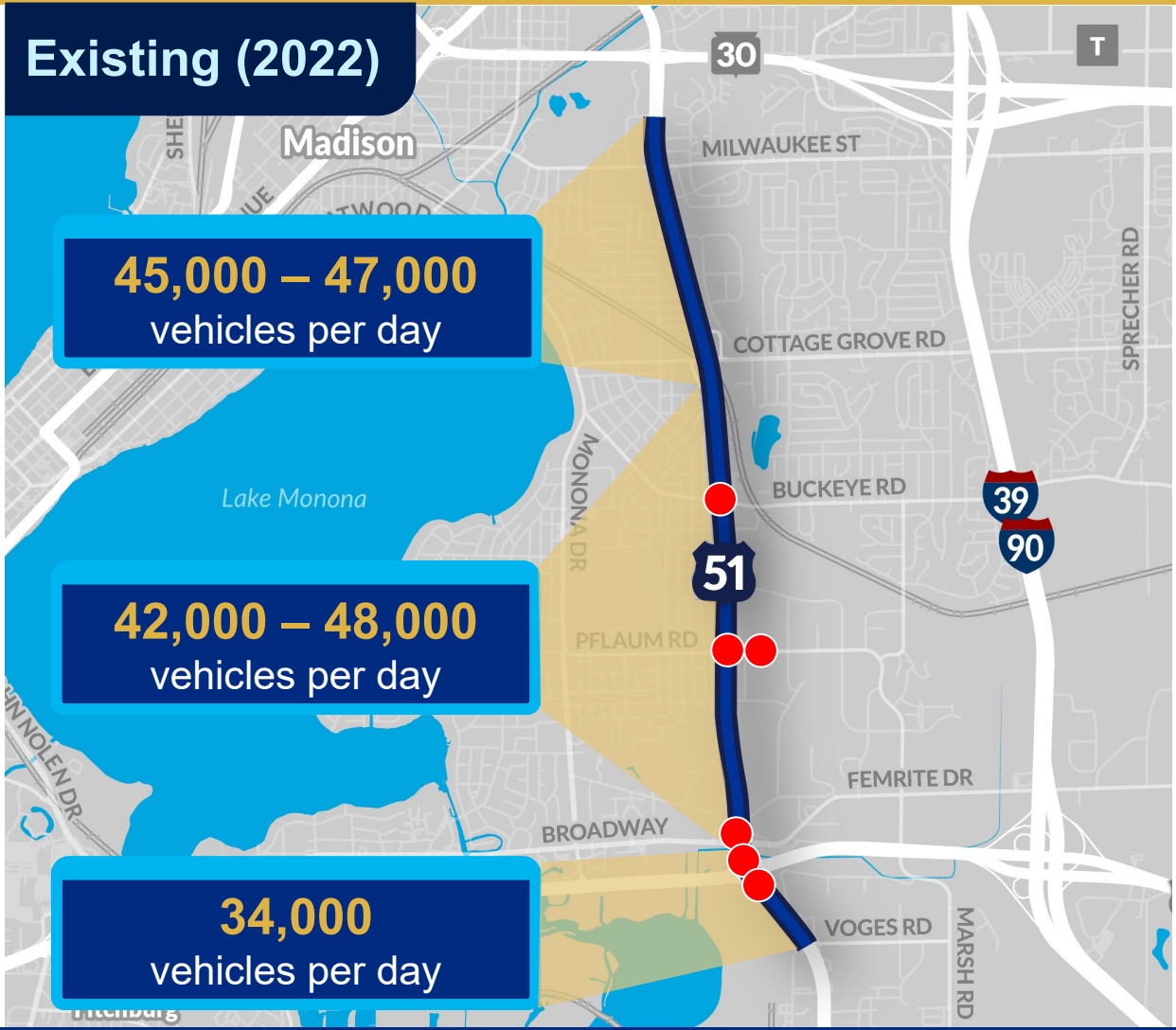


2017 to 2021 Crash Statistics

	2
pedestrian fatal crashes	
	3
pedestrian injury crashes	
	5
bicycle injury crashes	

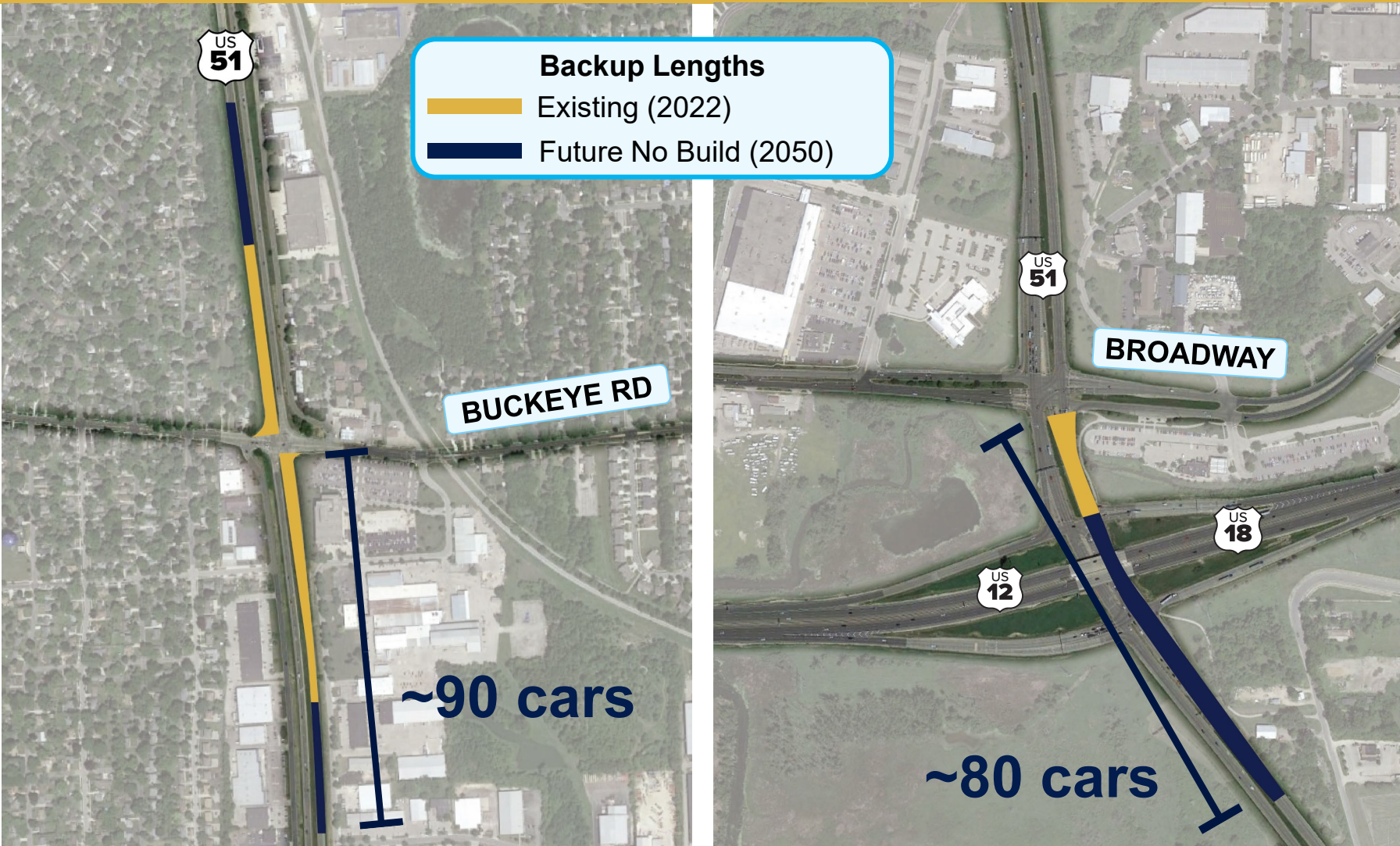
Source: Madison Area Metropolitan Planning Organization

Mobility: Traffic Volumes and Operations





Mobility: Vehicle Backups Along US 51



In 2050...

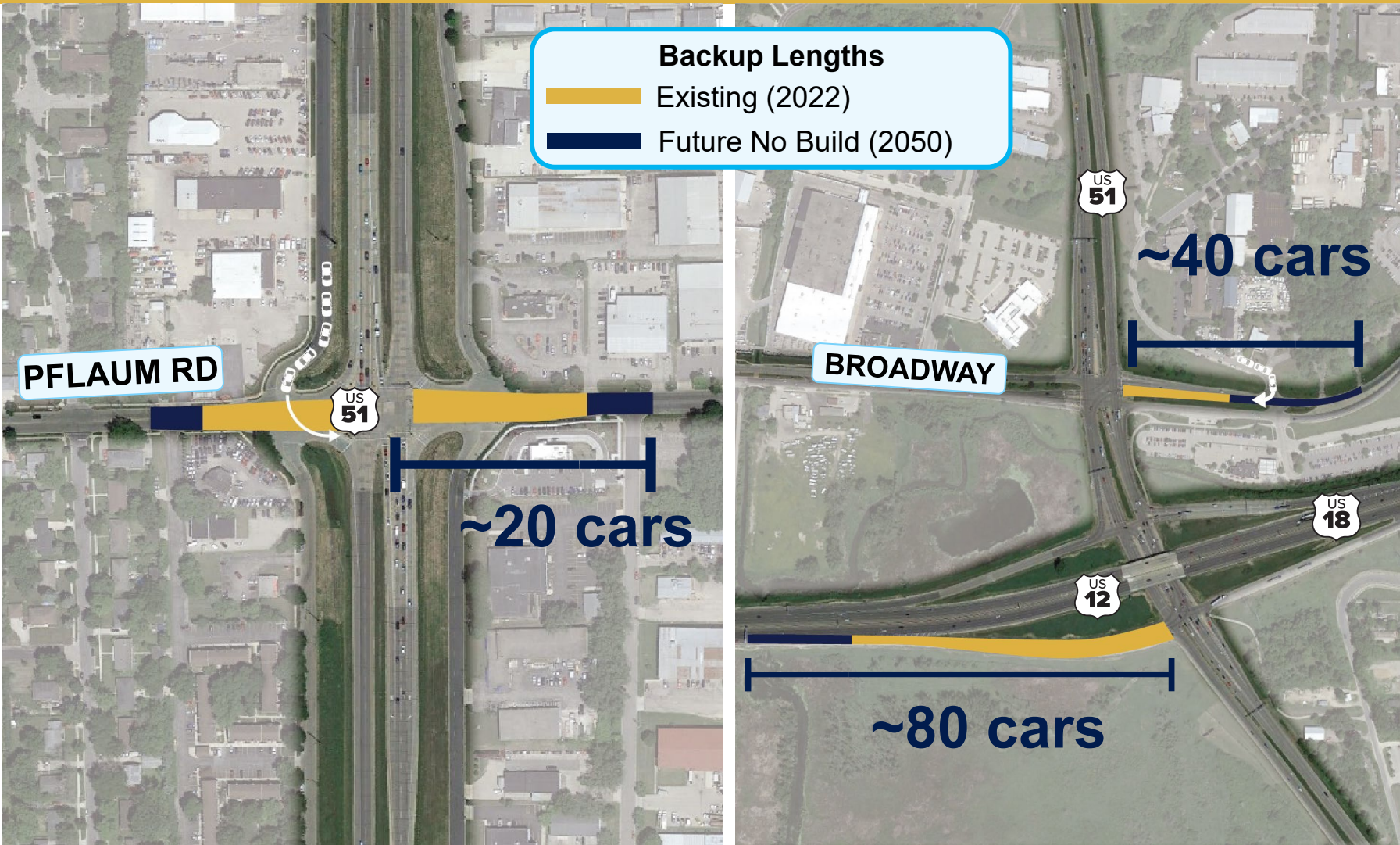
Backups on US 51 could reach a **1/2 mile** during peak hours

Excessive backups along US 51 are expected at:

- Buckeye Road
- Pflaum Road
- Broadway
- US 12/18
- Voges Rd / Terminal Dr



Mobility: Vehicle Backups Along Side Roads



Backups along side roads **block adjacent intersections** and can cause **safety concerns**

In 2050, excessive backups along side roads are expected at:

- Buckeye Road
- Pflaum Road
- Broadway
- EB US 12/18

Connectivity



Study Schedule

Early 2023

Fall 2023

Early 2024

2024 - 2025



Evaluate Existing Conditions



Develop Study Purpose and Need



Brainstorm Conceptual Alternatives



Identify Preliminary Alternatives



Refine Range of Alternatives



Identify Preferred Alternative



Complete Study



Public Meeting 1



Public Meeting 2



Public Meeting 3

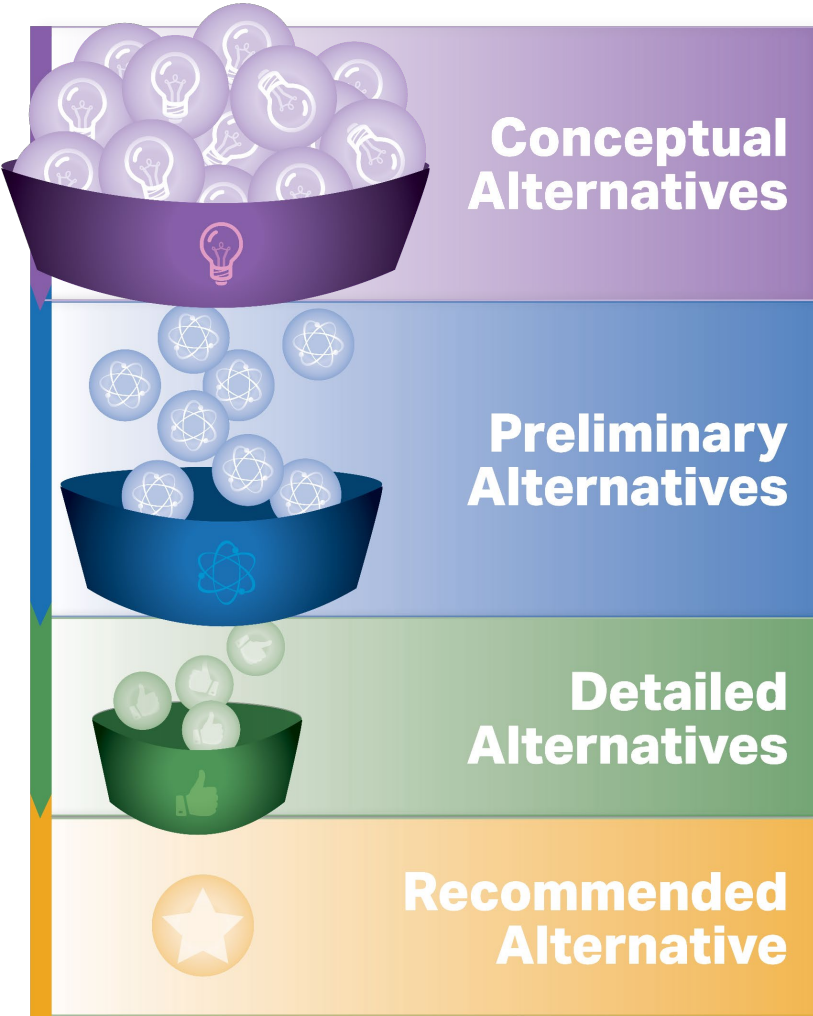


Public Meeting 4

We are here

Next Steps

We are starting this step next



Conceptual Alternatives


Considering the full range of possibilities





Future steps will analyze feasibility and suitability, **everything is up for discussion now**


Adjacent Studies and Projects

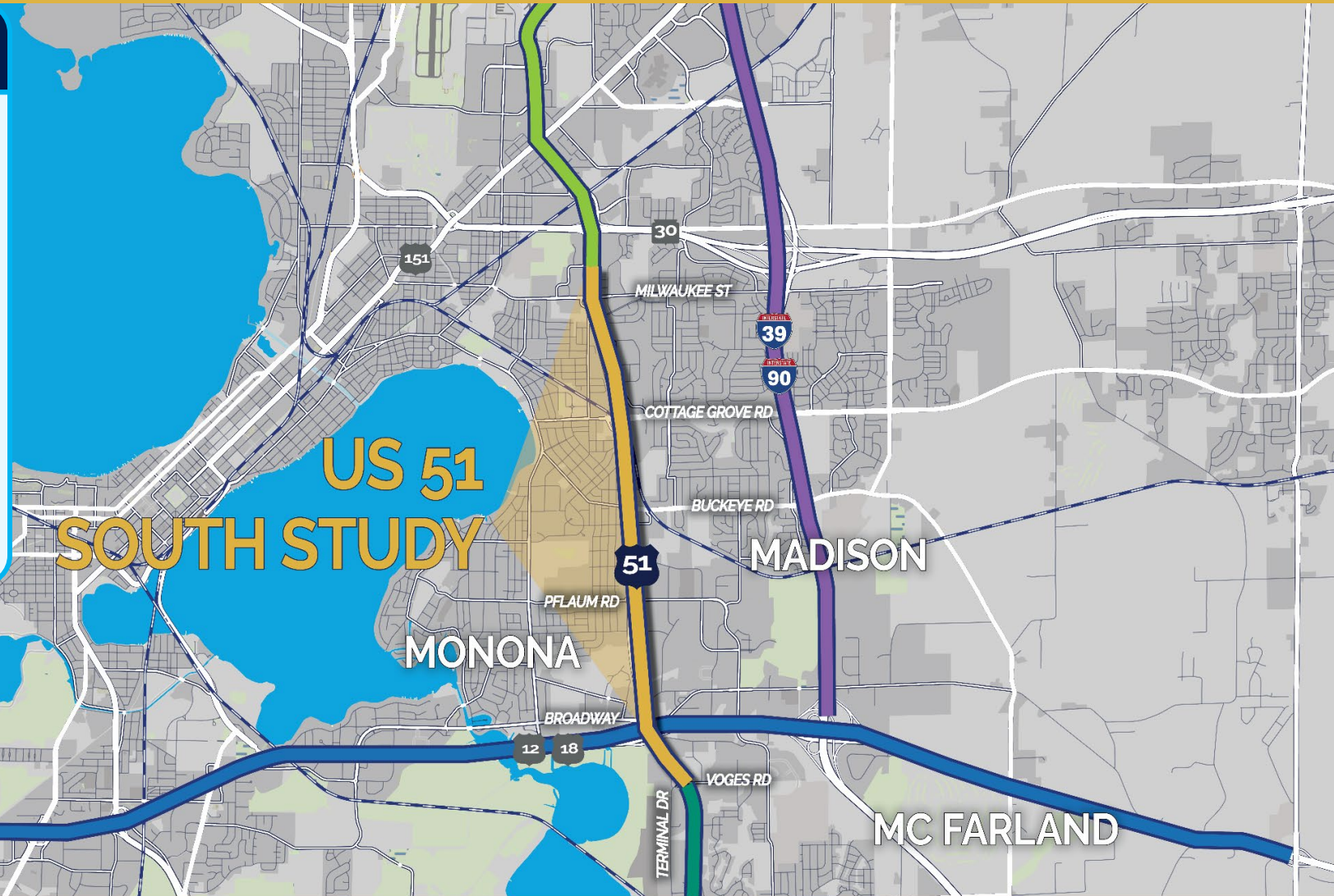
Adjacent Studies and Projects

-  **US 12/18 (Beltline) Study**
US 14 to County N

-  **US 51 North Study**
WIS 30 to I-39/90/94

-  **I-39/90/94 Corridor Study**
US 12/18 to US 12/WIS 16

-  **US 51 (Stoughton to McFarland)**
I-39/90 to US 12/18



We Want To Hear From You

1

Take the online survey!

Answer questions regarding:

- Corridor needs
- Top concerns
- Improvement ideas
- Corridor vision

3

Fill out a comment form! Comment period is open through August 20, 2023

Leave us a comment:

- By mail
- By email
- Online

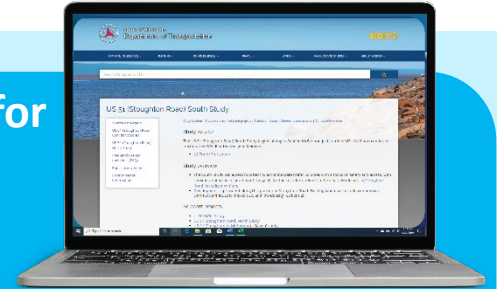


2

Visit the study website for more information:

- Study schedule
- Exhibit boards
- Public meeting presentation
- Link to online survey
- Study updates
- and more!

Tinyurl.com/US51SouthStudy



Scan this QR code

Who should I contact?

Jeff Berens
Project Manager
WisDOT SW Region

2101 Wright St
Madison, WI 53704
Tel. (608) 245-2656
Jeff.Berens@dot.wi.gov



THANK YOU!



**US 51 (STOUGHTON ROAD)
SOUTH CORRIDOR STUDY**

