



Concept Overview:

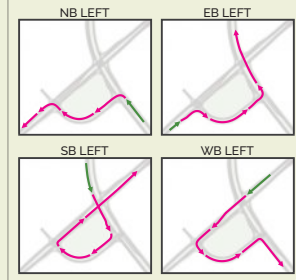
- Maintains at-grade signalized intersection, with addition of two new signalized intersections to accommodate left turn movements
- Relocates all left turn movements to new signalized intersections while maintaining right turns at the Stoughton Road/East Washington Avenue intersection
- Realigns the intersection angle

Pros

- Maintains urban feel near intersection
- Increases the number of vehicles that can move through the main intersection because the left turn movements are rerouted through adjacent intersections
- Safer and more efficient movements for bicyclists and pedestrians
- Uses existing Schmedeman Avenue intersection

Cons

- Adds two closely spaced signalized intersections near main intersection
- Property acquisitions and/or relocations required
- Requires southbound to eastbound (higher volume) movement to go through main intersection twice
- Non-traditional turning movements rerouted from main intersection to adjacent intersections



*Conflict points define situations where vehicles, bicycles, and/or pedestrians intersect at a point in space.

At-grade intersection, no bridges required for this concept alternative. Number of lanes, length of turn lanes, and other geometric elements are conceptual and may not reflect final design.