

THIS PAGE INTENTIONALLY LEFT BLANK

THIS PAGE INTENTIONALLY LEFT BLANK



Wetland Delineation

Legend

- Non-Wetland Review
Upl-TP = Upland Test Pit
Upl-CP = Upland Confirmation Pit
- Wetland Review
W-TP = Wetland Test Pit
W-CP = Wetland Confirmation Pit
- Wetland Review Corridor
- Delineated Wetlands (2013)
- W W Limits of Wetlands Not Defined
- 1 Wetland Number

Hydric Soils

- Somewhat poorly drained soils
- Poorly drained soils
- Very poorly drained soils

Wetland Classes

- Deep Marsh / Shallow Marsh (DM/SM)
- Wet and Sedge Meadows, Wet Prairie, Vernal Pools, Fens / Degraded Emergent Riparian Wetland (M/RPE)
- Wooded Swamp (WS or RPF (With Waterways))
- Shrub Swamp (SS)
- Open Water (AB)
- Road

US 51 Environmental Assessment
Alternative H Shown for Reference

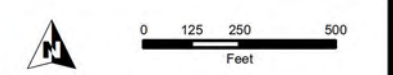
Sources: Base Data -
Dane County Land Information Office,
Wetlands - WDNR

US 51 PROJECT ID 5845-06-03

I-39/90 TO US 12/18
(MADISON SOUTH
BELTLINE)

WISCONSIN DEPARTMENT
OF TRANSPORTATION

DANE COUNTY,
WISCONSIN



Sheet 2

THIS PAGE INTENTIONALLY LEFT BLANK

Wetland Delineation

Legend

- Non-Wetland Review
 Upl-TP = Upland Test Pit
 Upl-CP = Upland Confirmation Pit
- Wetland Review
 W-TP = Wetland Test Pit
 W-CP = Wetland Confirmation Pit
- Wetland Review Corridor
- Delineated Wetlands (2013)
- Limits of Wetlands Not Defined
- 1 Wetland Number

Hydric Soils

- Somewhat poorly drained soils
- Poorly drained soils
- Very poorly drained soils

Wetland Classes

- Deep Marsh / Shallow Marsh (DM/SM)
- Wet and Sedge Meadows, Wet Prairie, Vernal Pools, Fens / Degraded Emergent Riparian Wetland (M/RPE)
- Wooded Swamp (WS or RPF (With Waterways))
- Shrub Swamp (SS)
- Open Water (AB)
- Road

US 51 Environmental Assessment
 Alternative H Shown for Reference

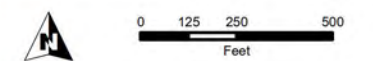
Sources: Base Data -
 Dane County Land Information Office,
 Wetlands - WDNR

US 51 PROJECT ID 5845-06-03

I-39/90 TO US 12/18
 (MADISON SOUTH
 BELTLINE)

WISCONSIN DEPARTMENT
 OF TRANSPORTATION

DANE COUNTY,
 WISCONSIN



Sheet 3



THIS PAGE INTENTIONALLY LEFT BLANK



Wetland Delineation

Legend

- Non-Wetland Review
Upl-TP = Upland Test Pit
Upl-CP = Upland Confirmation Pit
- Wetland Review
W-TP = Wetland Test Pit
W-CP = Wetland Confirmation Pit
- Wetland Review Corridor
- Delineated Wetlands (2013)
- W W Limits of Wetlands Not Defined
- 1 Wetland Number

Hydric Soils

- Somewhat poorly drained soils
- Poorly drained soils
- Very poorly drained soils

Wetland Classes

- Deep Marsh / Shallow Marsh (DM/SM)
- Wet and Sedge Meadows, Wet Prairie, Vernal Pools, Fens / Degraded Emergent Riparian Wetland (M/RPE)
- Wooded Swamp (WS or RPF (With Waterways))
- Shrub Swamp (SS)
- Open Water (AB)
- Road

US 51 Environmental Assessment
 Alternative H Shown for Reference

Sources: Base Data -
 Dane County Land Information Office,
 Wetlands - WDNR

US 51 PROJECT ID 5845-06-03

I-39/90 TO US 12/18
 (MADISON SOUTH
 BELTLINE)

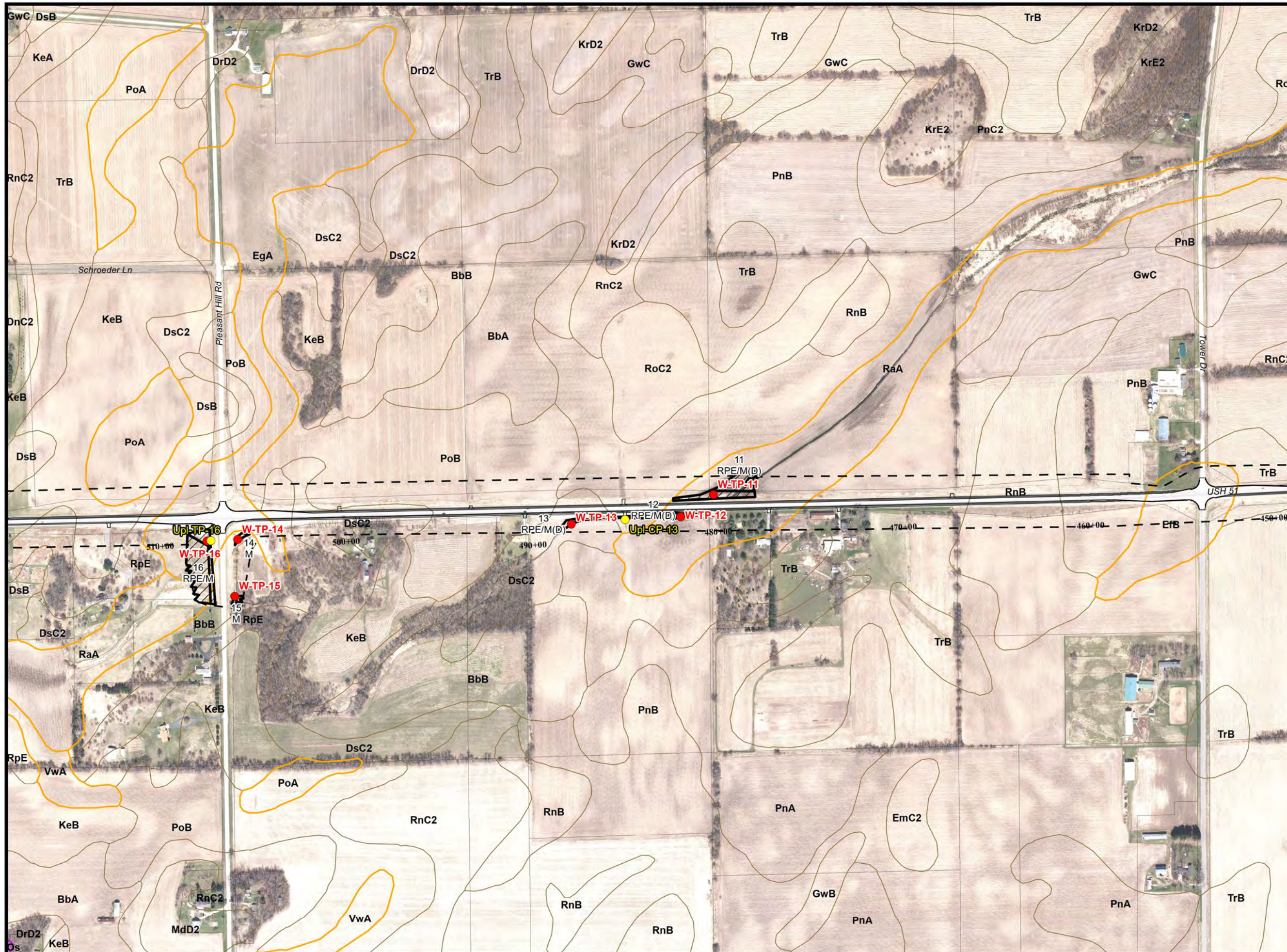
WISCONSIN DEPARTMENT
 OF TRANSPORTATION

DANE COUNTY,
 WISCONSIN



Sheet 4

THIS PAGE INTENTIONALLY LEFT BLANK



Wetland Delineation

Legend

- Non-Wetland Review
Upl-TP = Upland Test Pit
Upl-CP = Upland Confirmation Pit
- Wetland Review
W-TP = Wetland Test Pit
W-CP = Wetland Confirmation Pit
- Wetland Review Corridor
- Delineated Wetlands (2013)
- W W Limits of Wetlands Not Defined
- 1 Wetland Number

Hydric Soils

- Somewhat poorly drained soils
- Poorly drained soils
- Very poorly drained soils

Wetland Classes

- Deep Marsh / Shallow Marsh (DM/SM)
- Wet and Sedge Meadows, Wet Prairie, Vernal Pools, Fens / Degraded Emergent Riparian Wetland (M/RPE)
- Wooded Swamp (WS or RPF (With Waterways))
- Shrub Swamp (SS)
- Open Water (AB)
- Road

US 51 Environmental Assessment Alternative H Shown for Reference

Sources: Base Data - Dane County Land Information Office, Wetlands - WDNR

US 51 PROJECT ID 5845-06-03

I-39/90 TO US 12/18 (MADISON SOUTH BELTLINE)

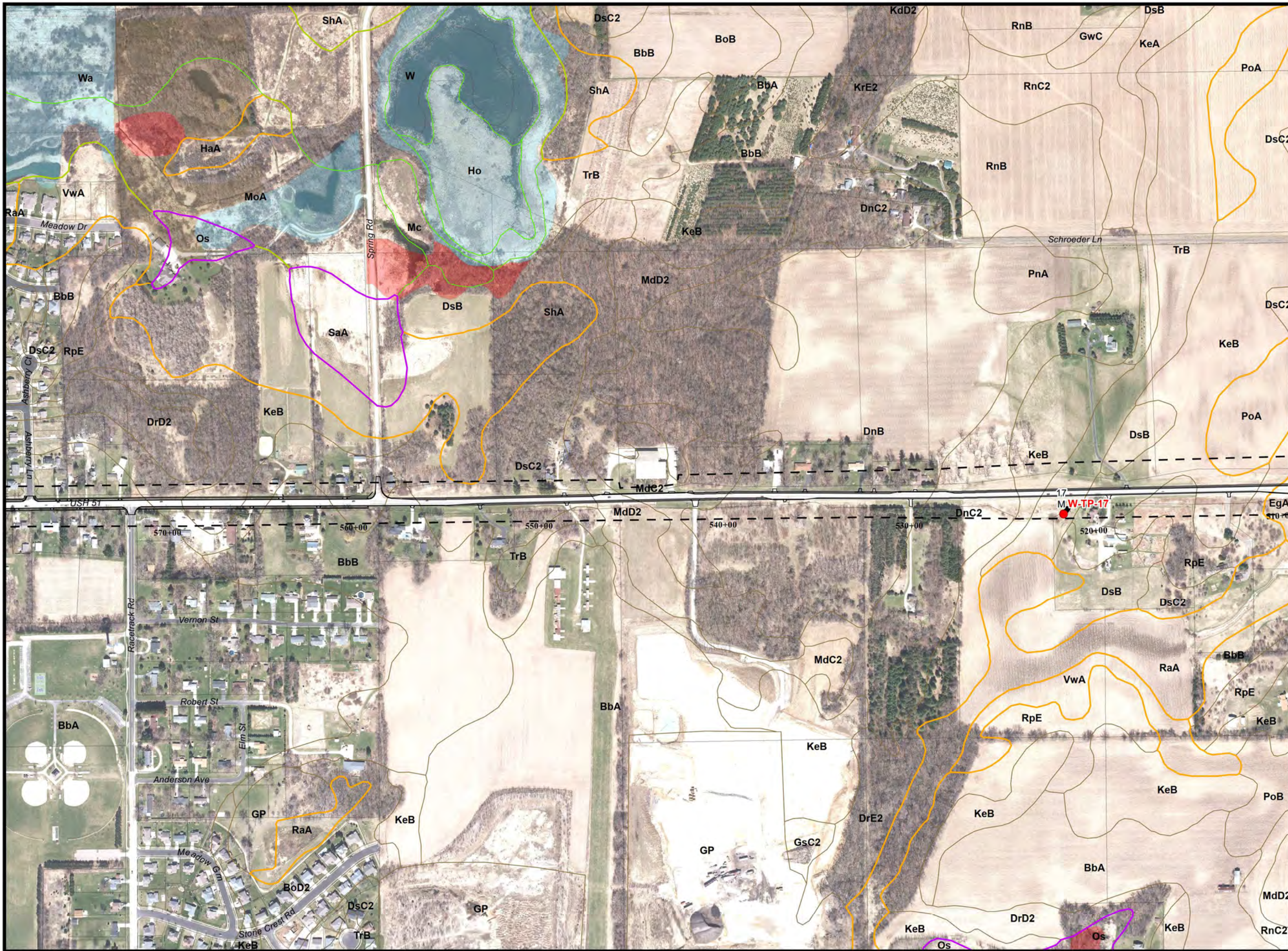
WISCONSIN DEPARTMENT OF TRANSPORTATION

DANE COUNTY, WISCONSIN



Sheet 5

THIS PAGE INTENTIONALLY LEFT BLANK



Wetland Delineation

Legend

- Non-Wetland Review
Upl-TP = Upland Test Pit
Upl-CP = Upland Confirmation Pit
- Wetland Review
W-TP = Wetland Test Pit
W-CP = Wetland Confirmation Pit
- - - Wetland Review Corridor
- Delineated Wetlands (2013)
- W W W Limits of Wetlands Not Defined
- 1 Wetland Number

- ### Hydric Soils
- Somewhat poorly drained soils
 - Poorly drained soils
 - Very poorly drained soils
- ### Wetland Classes
- Deep Marsh / Shallow Marsh (DM/SM)
 - Wet and Sedge Meadows, Wet Prairie, Vernal Pools, Fens / Degraded Emergent Riparian Wetland (M/RPE)
 - Wooded Swamp (WS or RPF (With Waterways))
 - Shrub Swamp (SS)
 - Open Water (AB)
 - Road

US 51 Environmental Assessment Alternative H Shown for Reference

Sources: Base Data - Dane County Land Information Office, Wetlands - WDNR

US 51
PROJECT ID 5845-06-03

I-39/90 TO US 12/18
(MADISON SOUTH BELTLINE)

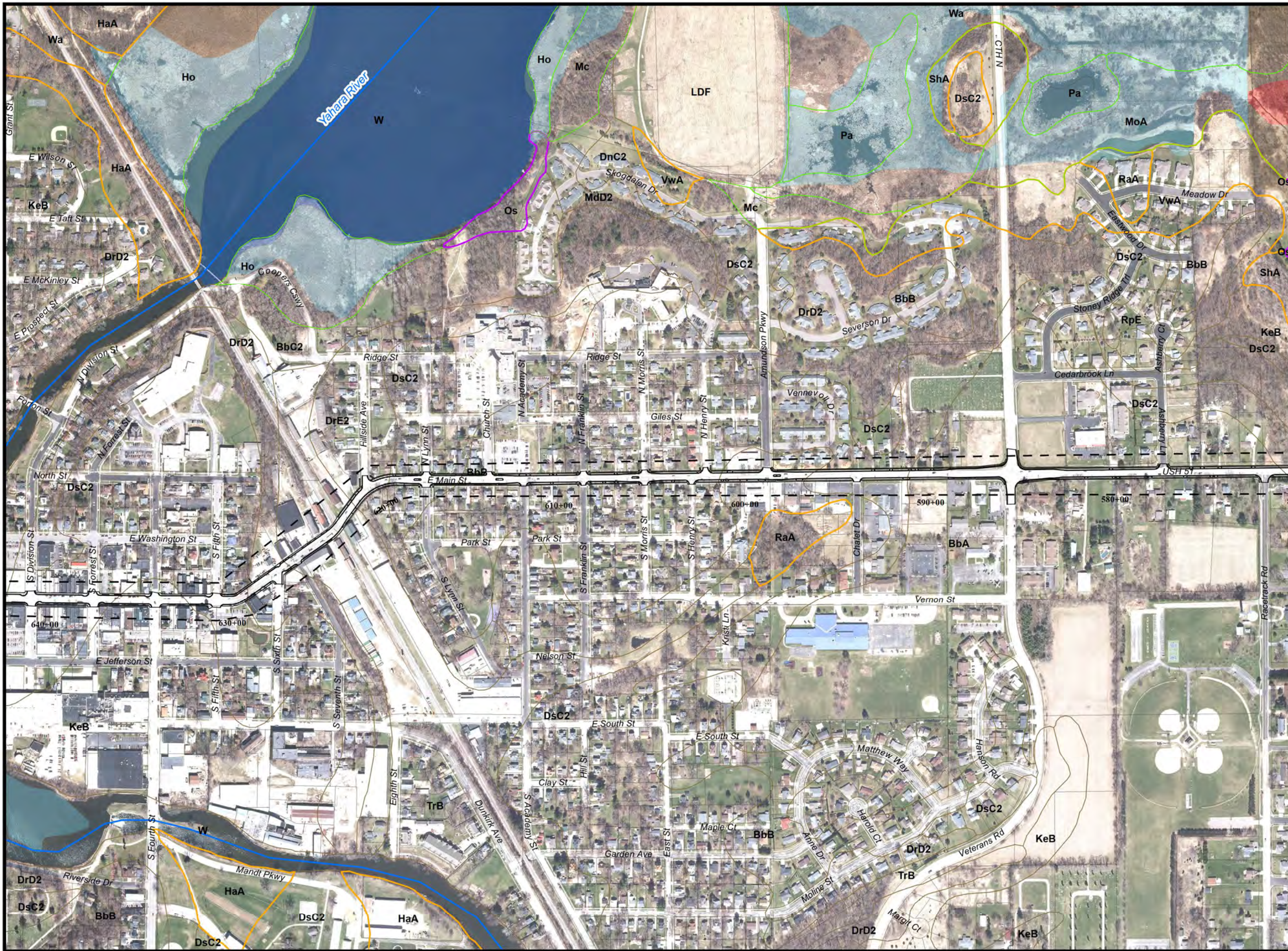
WISCONSIN DEPARTMENT OF TRANSPORTATION

DANE COUNTY, WISCONSIN



Sheet 6

THIS PAGE INTENTIONALLY LEFT BLANK



Wetland Delineation

Legend

- Non-Wetland Review
Upl-TP = Upland Test Pit
Upl-CP = Upland Confirmation Pit
- Wetland Review
W-TP = Wetland Test Pit
W-CP = Wetland Confirmation Pit
- Wetland Review Corridor
- Delineated Wetlands (2013)
- W W Limits of Wetlands Not Defined
- 1 Wetland Number

Hydric Soils

- Somewhat poorly drained soils
- Poorly drained soils
- Very poorly drained soils

Wetland Classes

- Deep Marsh / Shallow Marsh (DM/SM)
- Wet and Sedge Meadows, Wet Prairie, Vernal Pools, Fens / Degraded Emergent Riparian Wetland (M/RPE)
- Wooded Swamp (WS or RPF (With Waterways))
- Shrub Swamp (SS)
- Open Water (AB)
- Road

US 51 Environmental Assessment
 Alternative H Shown for Reference

Sources: Base Data -
 Dane County Land Information Office,
 Wetlands - WDNR

US 51 PROJECT ID 5845-06-03

I-39/90 TO US 12/18
 (MADISON SOUTH
 BELTLINE)

WISCONSIN DEPARTMENT
 OF TRANSPORTATION

DANE COUNTY,
 WISCONSIN



Sheet 7

THIS PAGE INTENTIONALLY LEFT BLANK



Wetland Delineation

Legend

- Non-Wetland Review
 - Upl-TP = Upland Test Pit
 - Upl-CP = Upland Confirmation Pit
- Wetland Review
 - W-TP = Wetland Test Pit
 - W-CP = Wetland Confirmation Pit
- Wetland Review Corridor
- Delineated Wetlands (2013)
- W W Limits of Wetlands Not Defined
- 1 Wetland Number

Hydric Soils

- Somewhat poorly drained soils
- Poorly drained soils
- Very poorly drained soils

Wetland Classes

- Deep Marsh / Shallow Marsh (DM/SM)
- Wet and Sedge Meadows, Wet Prairie, Vernal Pools, Fens / Degraded Emergent Riparian Wetland (M/RPE)
- Wooded Swamp (WS or RPF (With Waterways))
- Shrub Swamp (SS)
- Open Water (AB)
- Road

US 51 Environmental Assessment Alternative H Shown for Reference

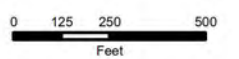
Sources: Base Data - Dane County Land Information Office, Wetlands - WDNR

US 51
PROJECT ID 5845-06-03

I-39/90 TO US 12/18
(MADISON SOUTH BELTLINE)

WISCONSIN DEPARTMENT OF TRANSPORTATION

DANE COUNTY, WISCONSIN



Sheet 8

THIS PAGE INTENTIONALLY LEFT BLANK



Wetland Delineation

Legend

- Non-Wetland Review
Upl-TP = Upland Test Pit
Upl-CP = Upland Confirmation Pit
- Wetland Review
W-TP = Wetland Test Pit
W-CP = Wetland Confirmation Pit
- Wetland Review Corridor
- Delineated Wetlands (2013)
- W W Limits of Wetlands Not Defined
- 1 Wetland Number

Hydric Soils

- Somewhat poorly drained soils
- Poorly drained soils
- Very poorly drained soils

Wetland Classes

- Deep Marsh / Shallow Marsh (DM/SM)
- Wet and Sedge Meadows, Wet Prairie, Vernal Pools, Fens / Degraded Emergent Riparian Wetland (M/RPE)
- Wooded Swamp (WS or RPF (With Waterways))
- Shrub Swamp (SS)
- Open Water (AB)
- Road

US 51 Environmental Assessment Alternative H Shown for Reference

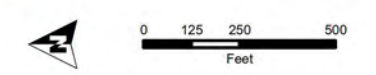
Sources: Base Data - Dane County Land Information Office, Wetlands - WDNR

US 51
PROJECT ID 5845-06-03

I-39/90 TO US 12/18
(MADISON SOUTH BELTLINE)

WISCONSIN DEPARTMENT OF TRANSPORTATION

DANE COUNTY, WISCONSIN



Sheet 9

THIS PAGE INTENTIONALLY LEFT BLANK



Wetland Delineation

- Legend**
- Non-Wetland Review
 - Upl-TP = Upland Test Pit
 - Upl-CP = Upland Confirmation Pit
 - Wetland Review
 - W-TP = Wetland Test Pit
 - W-CP = Wetland Confirmation Pit
 - Wetland Review Corridor
 - Delineated Wetlands (2013)
 - W W W Limits of Wetlands Not Defined
 - 1 Wetland Number

- Hydric Soils**
- Somewhat poorly drained soils
 - Poorly drained soils
 - Very poorly drained soils
- Wetland Classes**
- Deep Marsh / Shallow Marsh (DM/SM)
 - Wet and Sedge Meadows, Wet Prairie, Vernal Pools, Fens / Degraded Emergent Riparian Wetland (M/RPE)
 - Wooded Swamp (WS or RPF (With Waterways))
 - Shrub Swamp (SS)
 - Open Water (AB)
 - Road

US 51 Environmental Assessment
Alternative H Shown for Reference

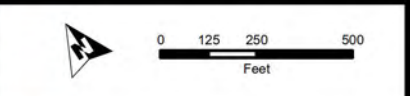
Sources: Base Data -
Dane County Land Information Office,
Wetlands - WDNR

US 51
PROJECT ID 5845-06-03

I-39/90 TO US 12/18
(MADISON SOUTH
BELTLINE)

WISCONSIN DEPARTMENT
OF TRANSPORTATION

DANE COUNTY,
WISCONSIN



Sheet 10

THIS PAGE INTENTIONALLY LEFT BLANK

THIS PAGE INTENTIONALLY LEFT BLANK



Wetland Delineation

Legend

- Non-Wetland Review
 Upl-TP = Upland Test Pit
 Upl-CP = Upland Confirmation Pit
- Wetland Review
 W-TP = Wetland Test Pit
 W-CP = Wetland Confirmation Pit
- Wetland Review Corridor
- Delineated Wetlands (2013)
- W W Limits of Wetlands Not Defined
- 1 Wetland Number

Hydric Soils

- Somewhat poorly drained soils
- Poorly drained soils
- Very poorly drained soils

Wetland Classes

- Deep Marsh / Shallow Marsh (DM/SM)
- Wet and Sedge Meadows, Wet Prairie, Vernal Pools, Fens / Degraded Emergent Riparian Wetland (M/RPE)
- Wooded Swamp (WS or RPF (With Waterways))
- Shrub Swamp (SS)
- Open Water (AB)
- Road

US 51 Environmental Assessment Alternative H Shown for Reference

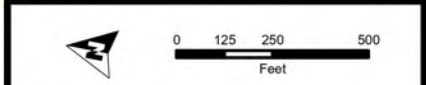
Sources: Base Data - Dane County Land Information Office, Wetlands - WDNR

US 51 PROJECT ID 5845-06-03

I-39/90 TO US 12/18 (MADISON SOUTH BELTLINE)

WISCONSIN DEPARTMENT OF TRANSPORTATION

DANE COUNTY, WISCONSIN



Sheet 12

THIS PAGE INTENTIONALLY LEFT BLANK



Wetland Delineation

Legend

- Non-Wetland Review
Upl-TP = Upland Test Pit
Upl-CP = Upland Confirmation Pit
- Wetland Review
W-TP = Wetland Test Pit
W-CP = Wetland Confirmation Pit
- Wetland Review Corridor
- Delineated Wetlands (2013)
- W W W Limits of Wetlands Not Defined
- 1 Wetland Number

Hydric Soils

- Somewhat poorly drained soils
- Poorly drained soils
- Very poorly drained soils

Wetland Classes

- Deep Marsh / Shallow Marsh (DM/SM)
- Wet and Sedge Meadows, Wet Prairie, Vernal Pools, Fens / Degraded Emergent Riparian Wetland (M/RPE)
- Wooded Swamp (WS or RPF (With Waterways))
- Shrub Swamp (SS)
- Open Water (AB)
- Road

US 51 Environmental Assessment Alternative H Shown for Reference

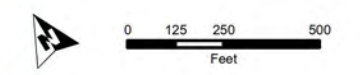
Sources: Base Data - Dane County Land Information Office, Wetlands - WDNR

US 51 PROJECT ID 5845-06-03

I-39/90 TO US 12/18 (MADISON SOUTH BELTLINE)

WISCONSIN DEPARTMENT OF TRANSPORTATION

DANE COUNTY, WISCONSIN



Sheet 13

THIS PAGE INTENTIONALLY LEFT BLANK



Wetland Delineation

Legend

- Non-Wetland Review Areas
 Upl-TP = Upland Test Pit
 Upl-CP = Upland Confirmation Pit
- Wetland Review Area
 W-TP = Wetland Test Pit
 W-CP = Wetland Confirmation Pit
- - - Wetland Review Corridor
- Delineated Wetlands (2013)
- Limits of Wetlands Not Defined
- 1 Wetland Number

Hydric Soils

- Somewhat poorly drained soils
- Poorly drained soils
- Very poorly drained soils

Wetland Classes

- Deep Marsh / Shallow Marsh (DM/SM)
- Wet and Sedge Meadows, Wet Prairie, Vernal Pools, Fens / Degraded Emergent Riparian Wetland (M/RPE)
- Wooded Swamp ((WS or RPF (With Waterways))
- Shrub Swamp (SS)
- Open Water (AB)
- Road

US 51 Environmental Assessment
 Alternative H Shown for Reference

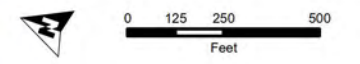
Sources: Base Data -
 Dane County Land Information Office,
 Wetlands - WDNR

US 51 PROJECT ID 5845-06-03

I-39/90 TO US 12/18
 (MADISON SOUTH
 BELTLINE)

WISCONSIN DEPARTMENT
 OF TRANSPORTATION

DANE COUNTY,
 WISCONSIN



Sheet 14

THIS PAGE INTENTIONALLY LEFT BLANK



Wetland Delineation

Legend

- Non-Wetland Review
Upl-TP = Upland Test Pit
Upl-CP = Upland Confirmation Pit
- Wetland Review
W-TP = Wetland Test Pit
W-CP = Wetland Confirmation Pit
- - - Wetland Review Corridor
- ▨ Delineated Wetlands (2013)
- 〰〰〰 Limits of Wetlands Not Defined
- 1 Wetland Number

Hydric Soils

- ▭ Somewhat poorly drained soils
- ▭ Poorly drained soils
- ▭ Very poorly drained soils

Wetland Classes

- ▭ Deep Marsh / Shallow Marsh (DM/SM)
- ▭ Wet and Sedge Meadows, Wet Prairie, Vernal Pools, Fens / Degraded Emergent Riparian Wetland (M/RPE)
- ▭ Wooded Swamp (WS or RPF (With Waterways))
- ▭ Shrub Swamp (SS)
- ▭ Open Water (AB)
- ▭ Road

US 51 Environmental Assessment
Alternative H Shown for Reference

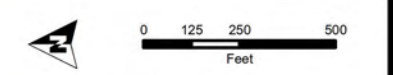
Sources: Base Data -
Dane County Land Information Office,
Wetlands - WDNR

US 51 PROJECT ID 5845-06-03

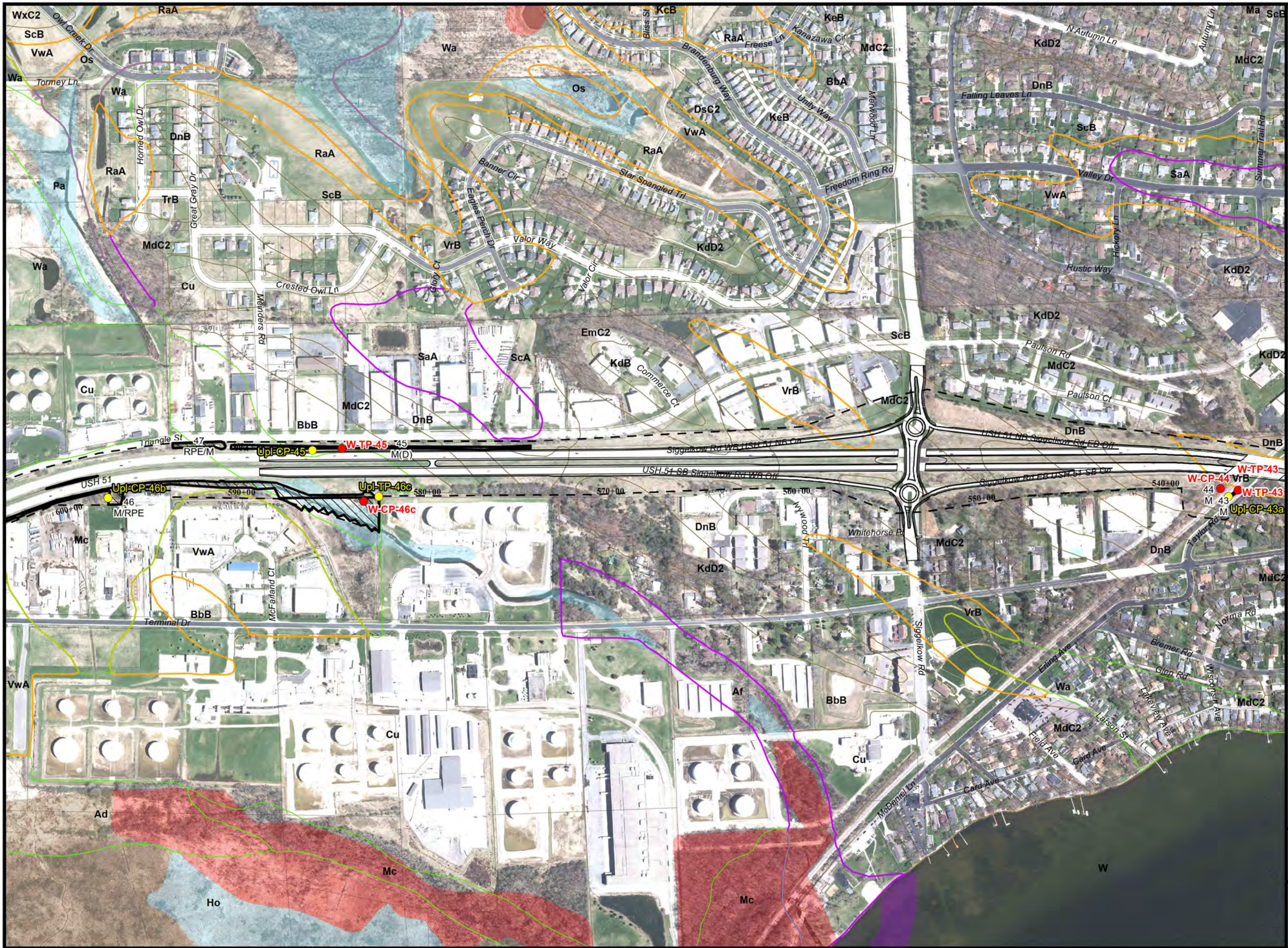
I-39/90 TO US 12/18 (MADISON SOUTH BELTLINE)

WISCONSIN DEPARTMENT
OF TRANSPORTATION

DANE COUNTY,
WISCONSIN



THIS PAGE INTENTIONALLY LEFT BLANK



Wetland Delineation

Legend

- Non-Wetland Review
Upl-TP = Upland Test Pit
Upl-CP = Upland Confirmation Pit
- Wetland Review
W-TP = Wetland Test Pit
W-CP = Wetland Confirmation Pit
- Wetland Review Corridor
- Delineated Wetlands (2013)
- Limits of Wetlands Not Defined
- 1 Wetland Number

Hydric Soils

- Somewhat poorly drained soils
- Poorly drained soils
- Very poorly drained soils

Wetland Classes

- Deep Marsh / Shallow Marsh (DM/SM)
- Wet and Sedge Meadows, Wet Prairie, Vernal Pools, Fens / Degraded Emergent Riparian Wetland (M/RPE)
- Wooded Swamp (WS or RPF (With Waterways))
- Shrub Swamp (SS)
- Open Water (AB)
- Road

US 51 Environmental Assessment Alternative H Shown for Reference

Sources: Base Data - Dane County Land Information Office, Wetlands - WDNR

US 51 PROJECT ID 5845-06-03

I-39/90 TO US 12/18 (MADISON SOUTH BELTLINE)

WISCONSIN DEPARTMENT OF TRANSPORTATION

DANE COUNTY, WISCONSIN



Sheet 16

THIS PAGE INTENTIONALLY LEFT BLANK