

# US 51 County B/AB Roundabout

**Chad Wagner**  
WisDOT Consultant Project Manager

Public Involvement Meeting

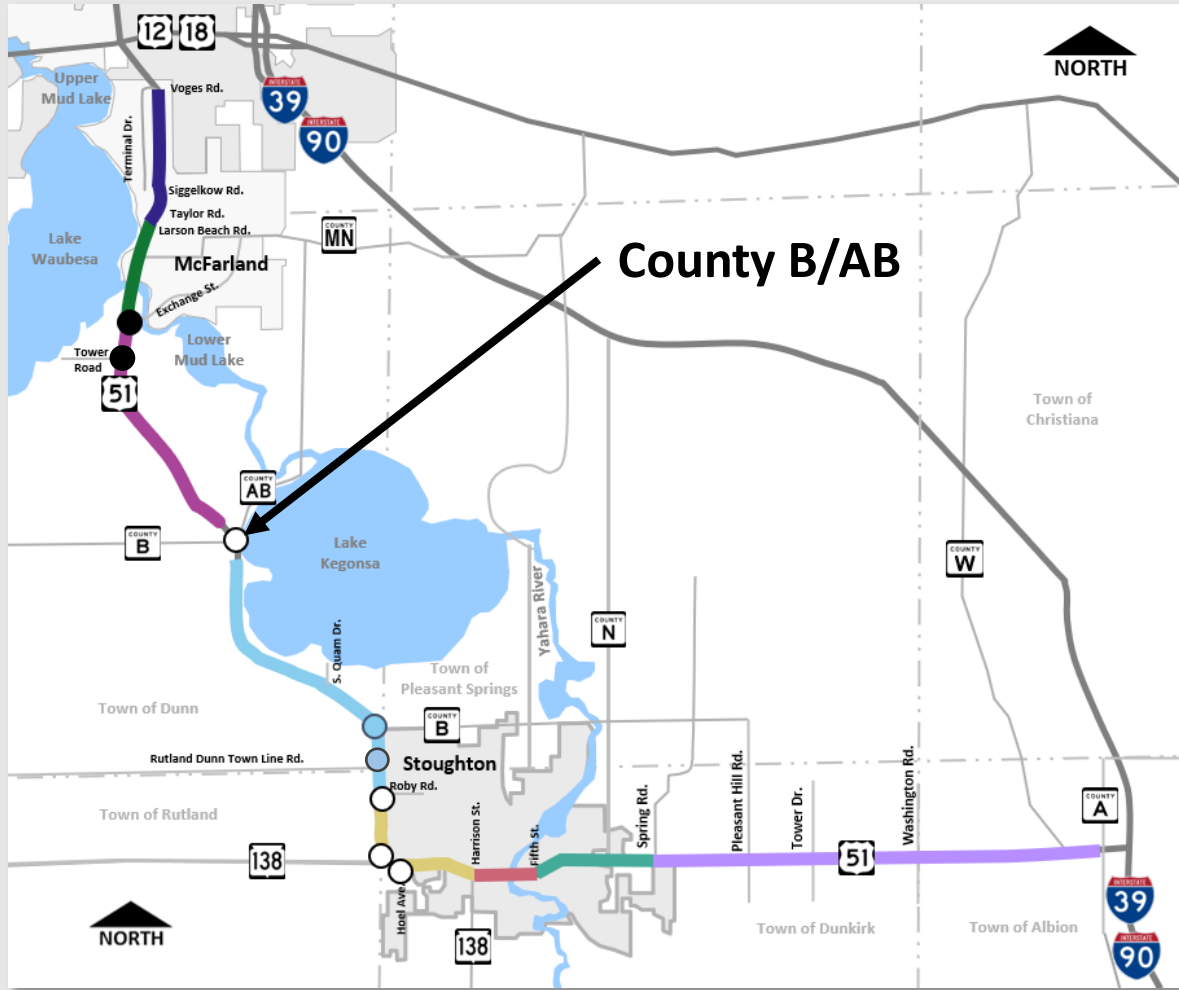
April 2023

# Presentation outline

- US 51 corridor overview
- Project needs
- Preferred alternative
- Construction staging
- Business coordination
- Next steps



# US 51 corridor overview

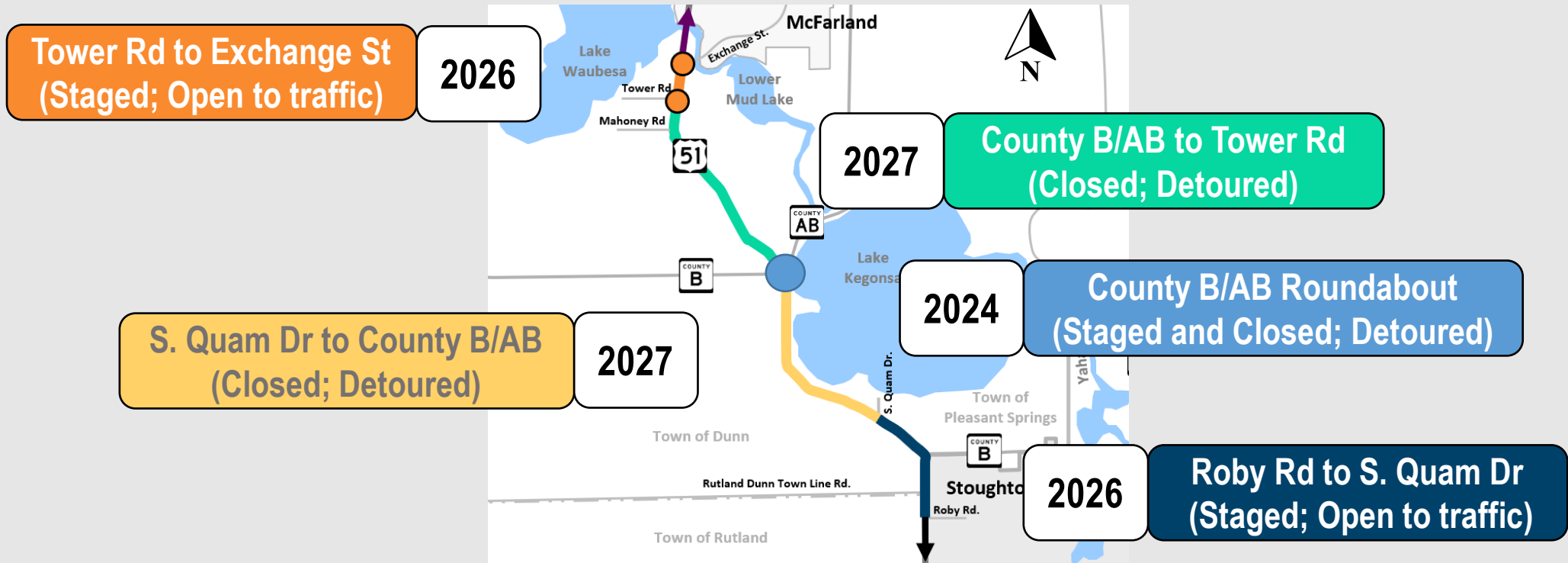


- 18.1 miles
- Split into 11 construction projects
- Construction from 2024 through 2029



# US 51 corridor overview

## Rural area recap



*Note: Years shown subject to change depending on funding*



# Project needs

Improve intersection safety while accommodating projected traffic volumes

- Roadway safety

- 36 crashes between 2014 and 2018
- 47% reported injuries
- 53% angle crashes
- Fatal accident in 2018
  
- 21 crashes have occurred since 2018
- 48% reported injuries

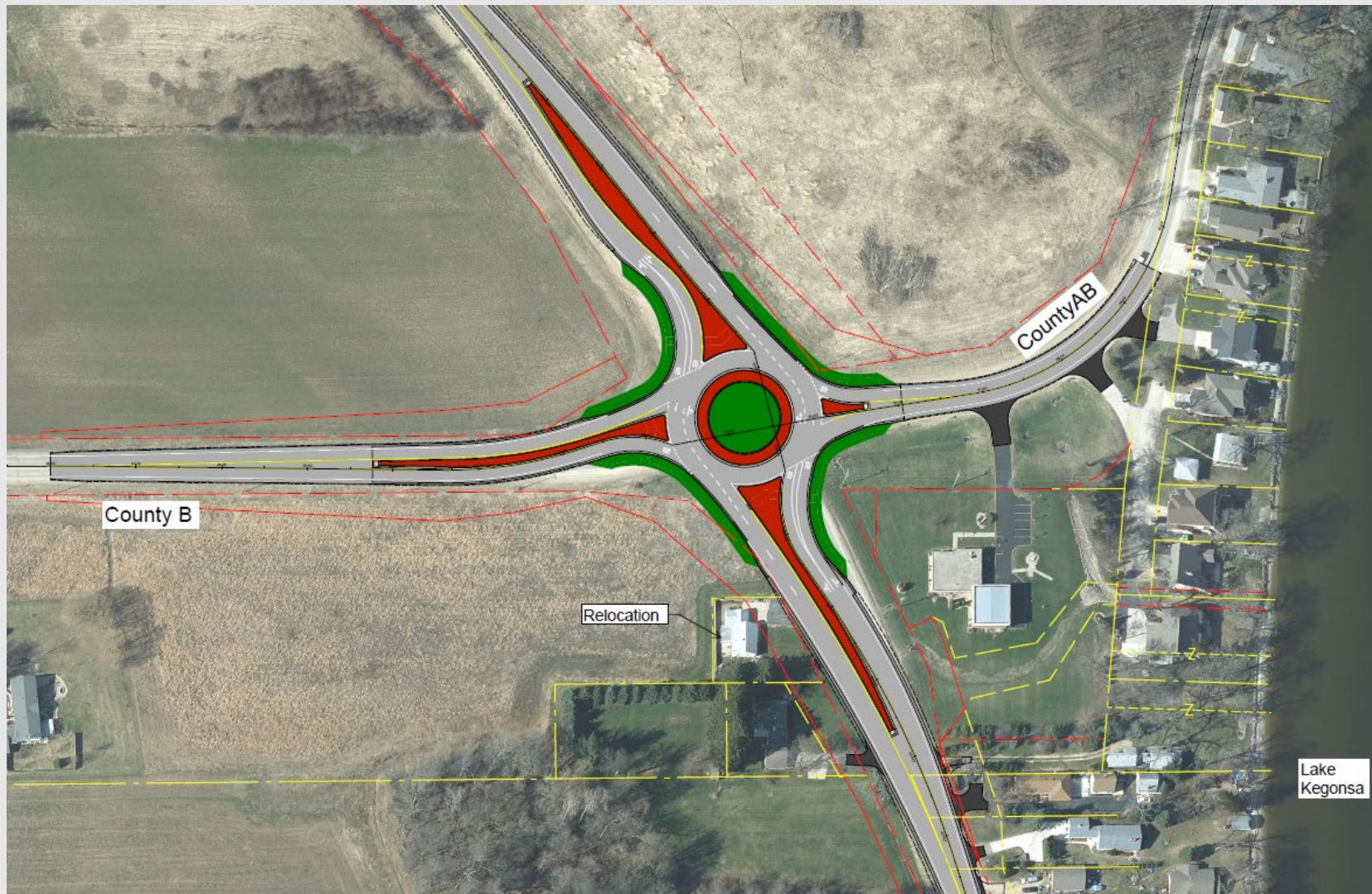


# Project needs

- Traffic operations
  - Failing operations
    - County B left/through movement
      - AM Peak: Over 3 min of delay
      - PM Peak: About 1.5 min of delay
    - County AB left/through movement
      - AM Peak: Over 2 min of delay
      - PM Peak: 43 seconds of delay



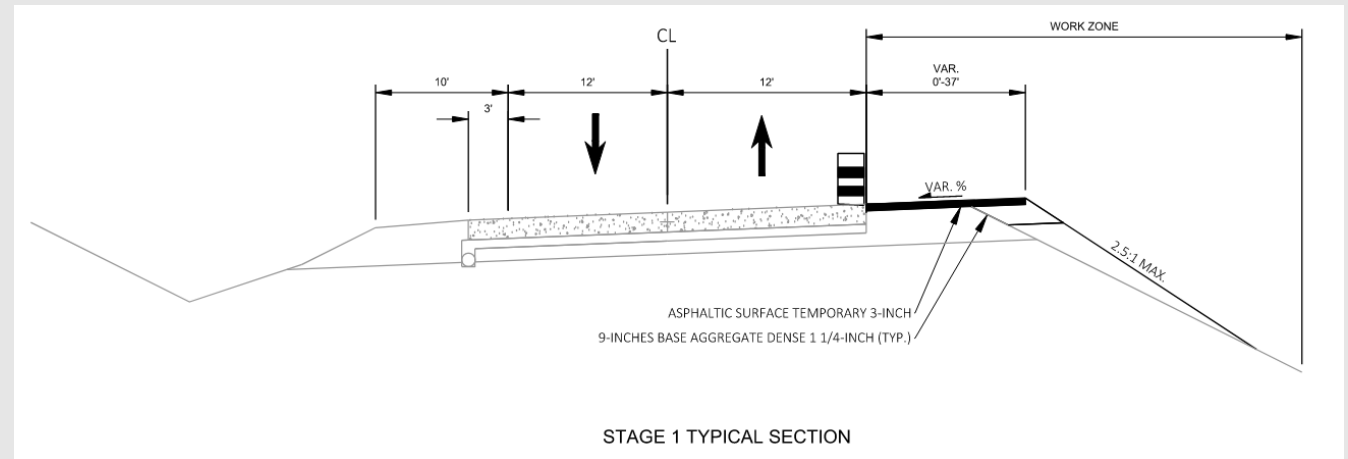
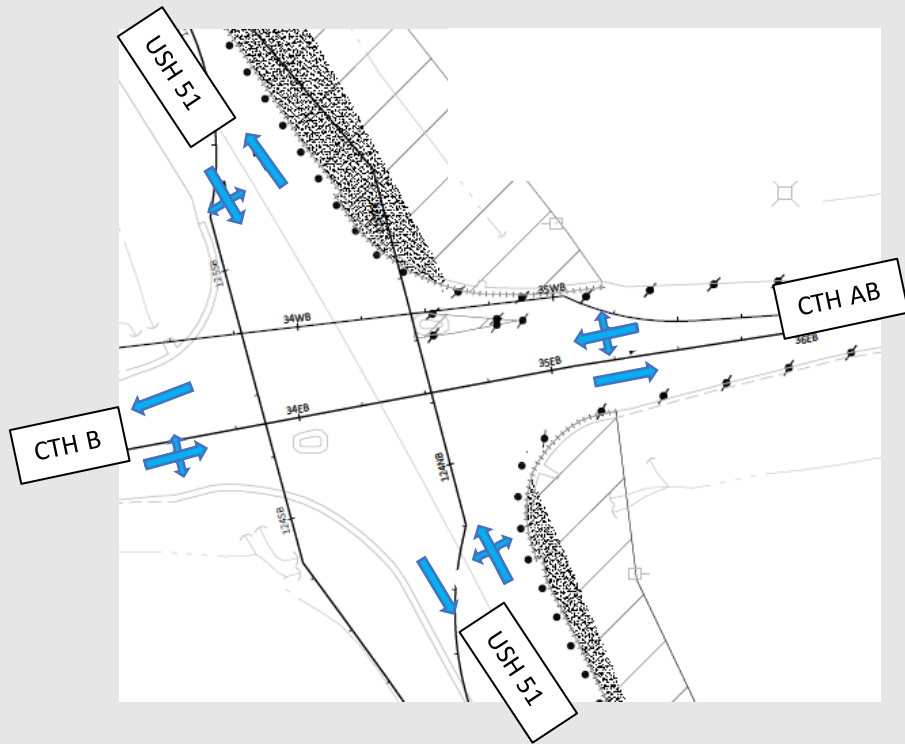
# Preferred alternative



# Construction staging

## Stage 1

- Placement of temporary pavement
- No impact to traffic

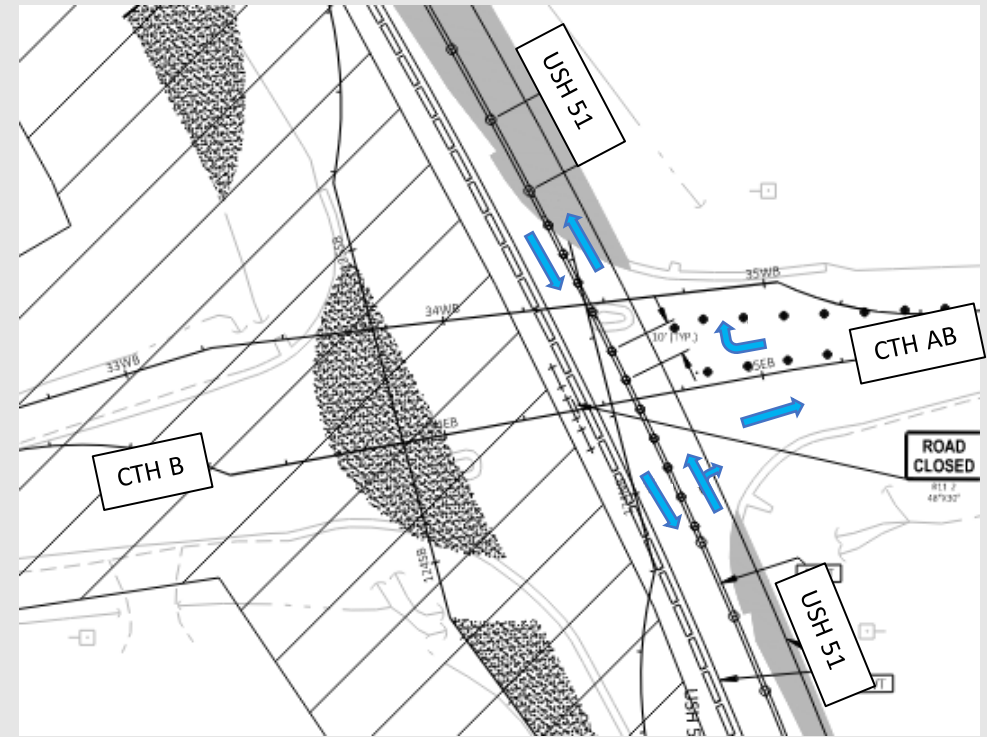




# Construction staging

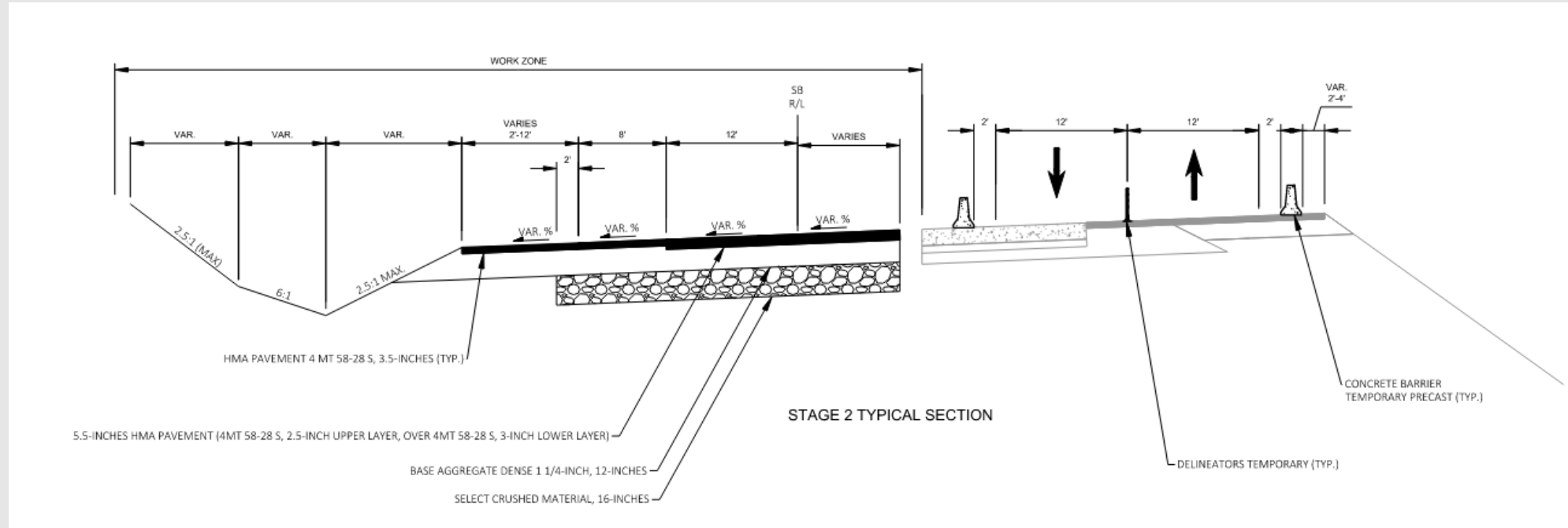
## Stage 2

- US 51 traffic shifted to the east
- Construct the west side of US 51 and County B (west)
- County B (west)
  - No access – Road closed
- County AB (east)
  - Right in/right out access only



# Construction staging

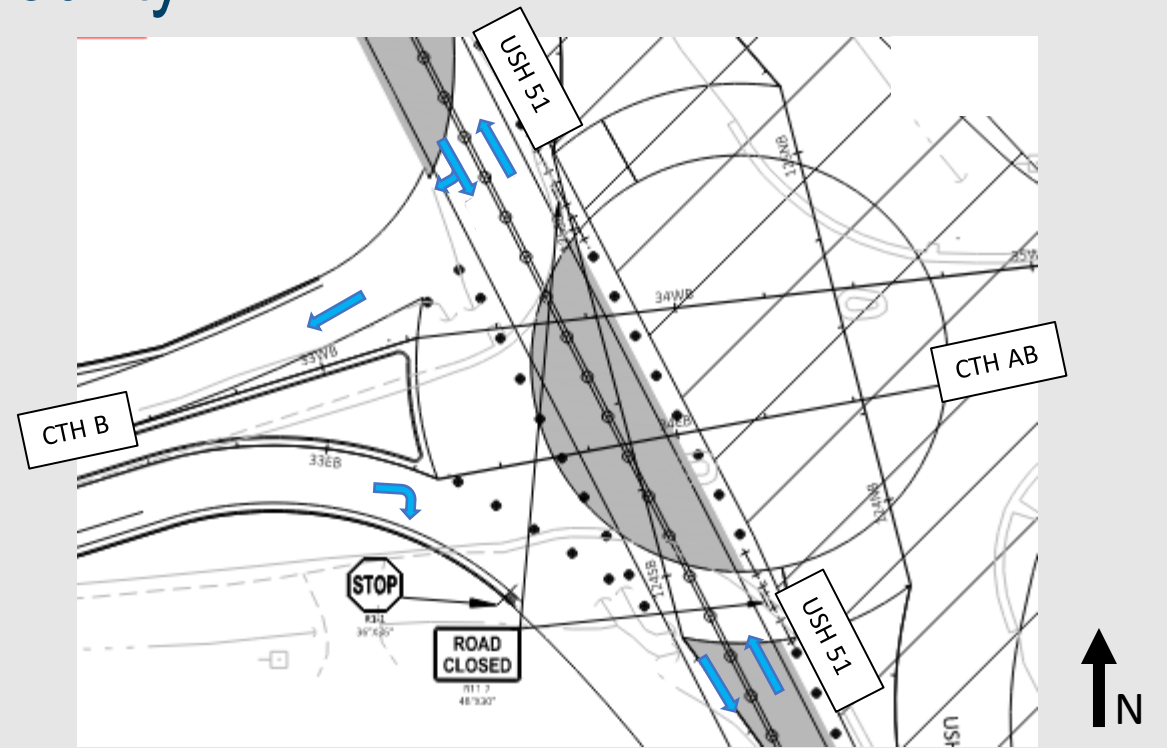
## Stage 2



# Construction staging

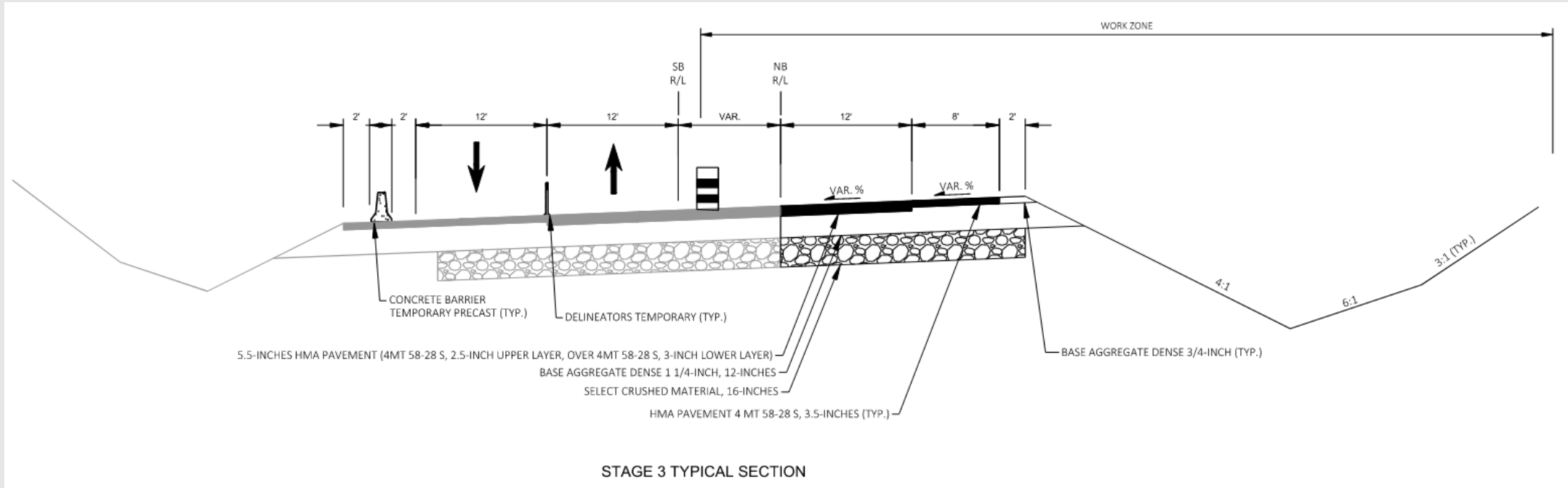
## Stage 3

- US 51 traffic shifted to the west
- Construct the east side of US 51 and County AB
- County B (west)
  - Right in/right out access only
- County AB (east)
  - No access – Road closed



# Construction staging

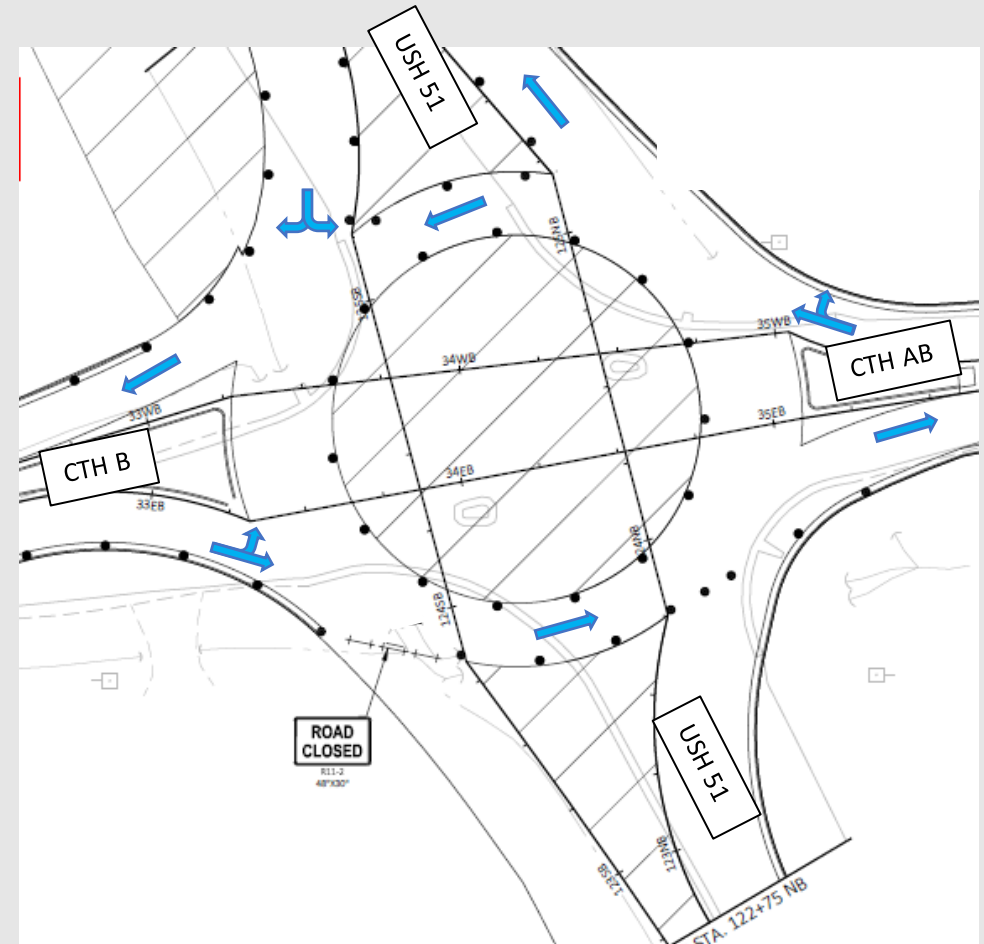
## Stage 3



# Construction staging

## Stage 4

- US 51 closed south of County B/AB
- Construct US 51 south of County B/AB
- County B (west)
  - Through and left access only
- County AB (east)
  - Through and right access only

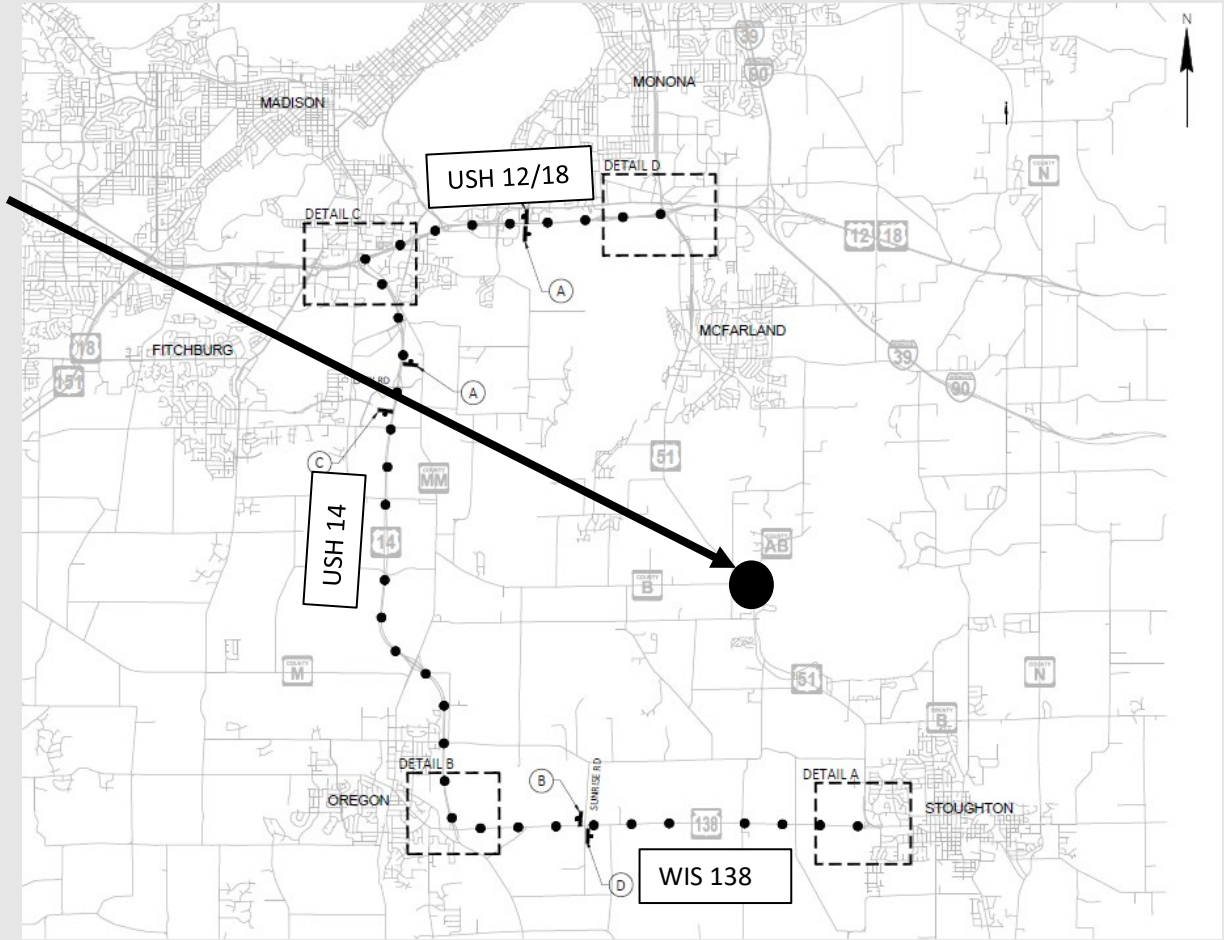


# Construction staging

## Detour

- WIS 138 to US 14 to US 12/18

County B/AB



# Business coordination

## We're In This Together!

- Visit [wisconsindot.gov/together](https://wisconsindot.gov/together)
  - Tips, tools and resources
  - New (2021) business coordination guide
- Project team is here to help
  - What information would help you....
    - Inform customers about the project?
    - Coordinate with suppliers?
    - Communicate with employees?



# Next steps

- Submit public comments by May 26<sup>th</sup>, 2023
- Contact us with any questions or concerns:

Jennifer Kobryn, P.E.  
WisDOT Supervisor  
(608) 977-1467  
[Jennifer.kobryn@dot.wi.gov](mailto:Jennifer.kobryn@dot.wi.gov)

Chad Wagner, P.E.  
Consultant Project Manager  
(608) 242-6651  
[cwagner@msa-ps.com](mailto:cwagner@msa-ps.com)





# Next steps

Stay involved and connected!

---



Project website



Project email sign up





# US 51 County B/AB Roundabout

Thank you for your interest  
and comments!

