

WIS 130

County B (West Junction) to WIS 154
Richland & Sauk County

Public Involvement Meeting

February 2022

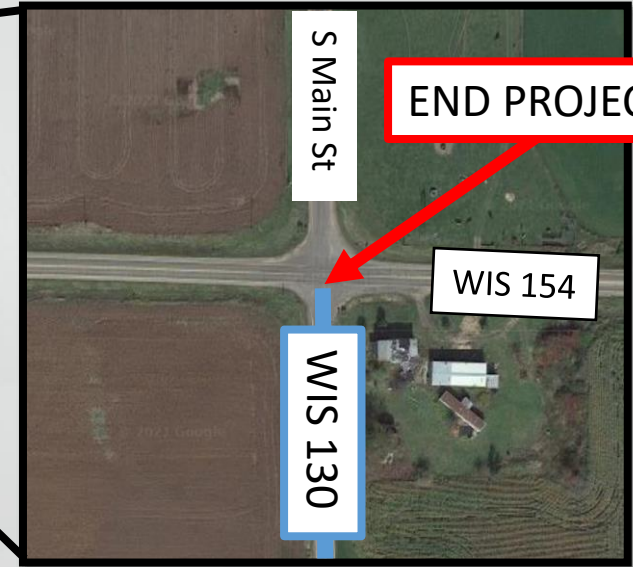
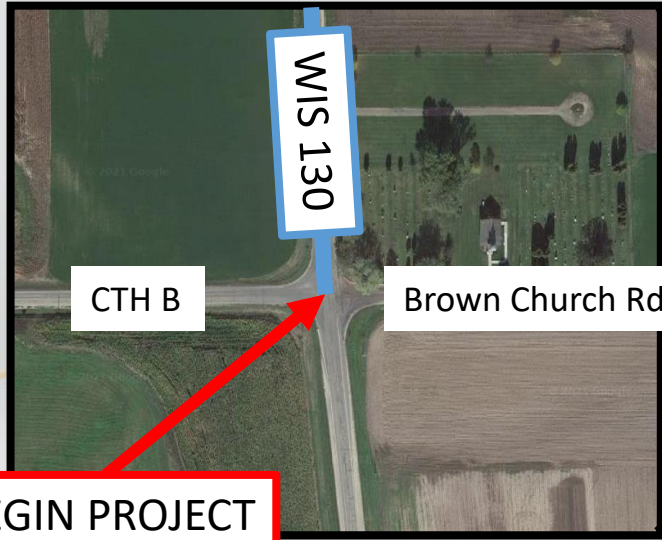
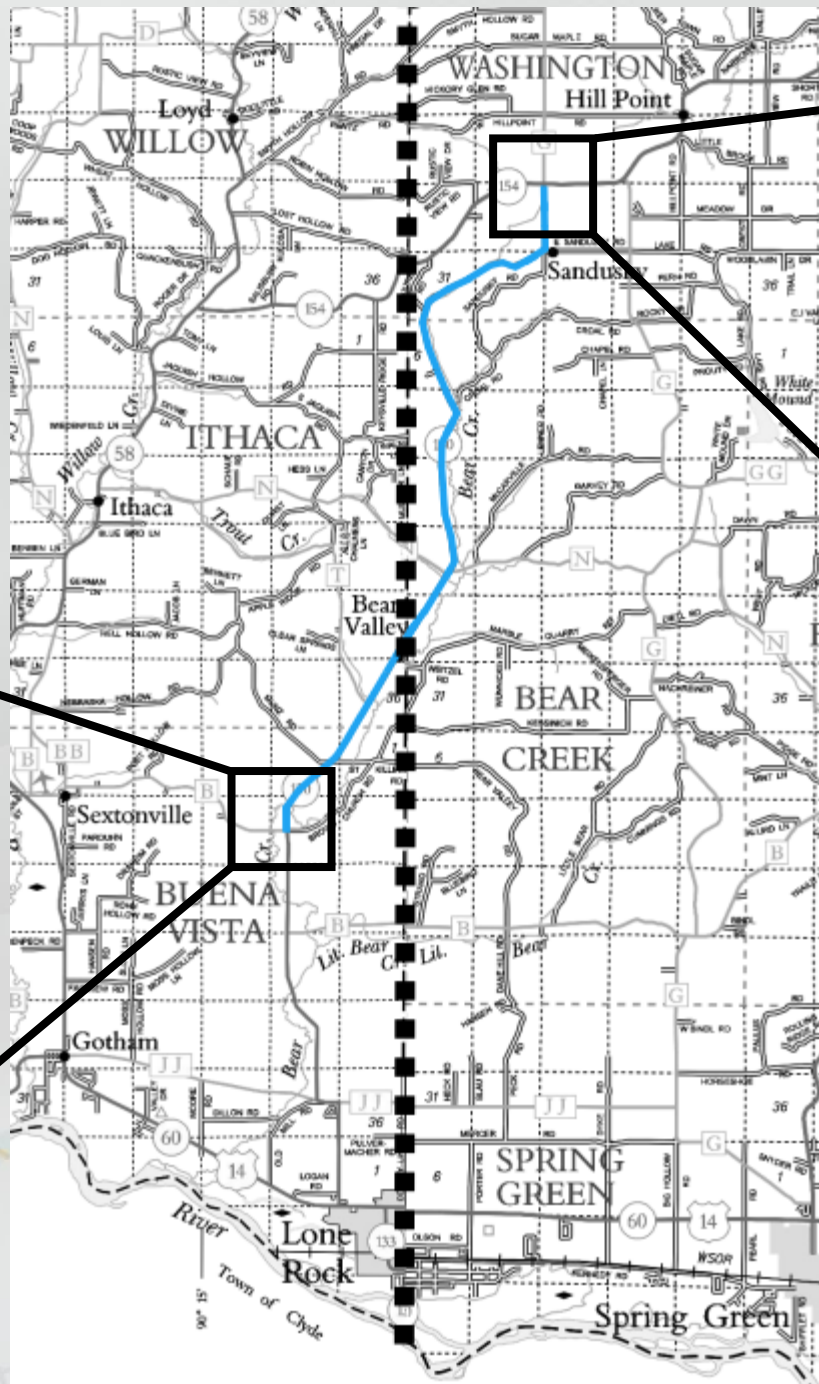


Presentation Agenda

- Project Limits
- Project Purpose & Need
- Design Overview
- Recent Activities
- Upcoming Schedule
- Contact Information

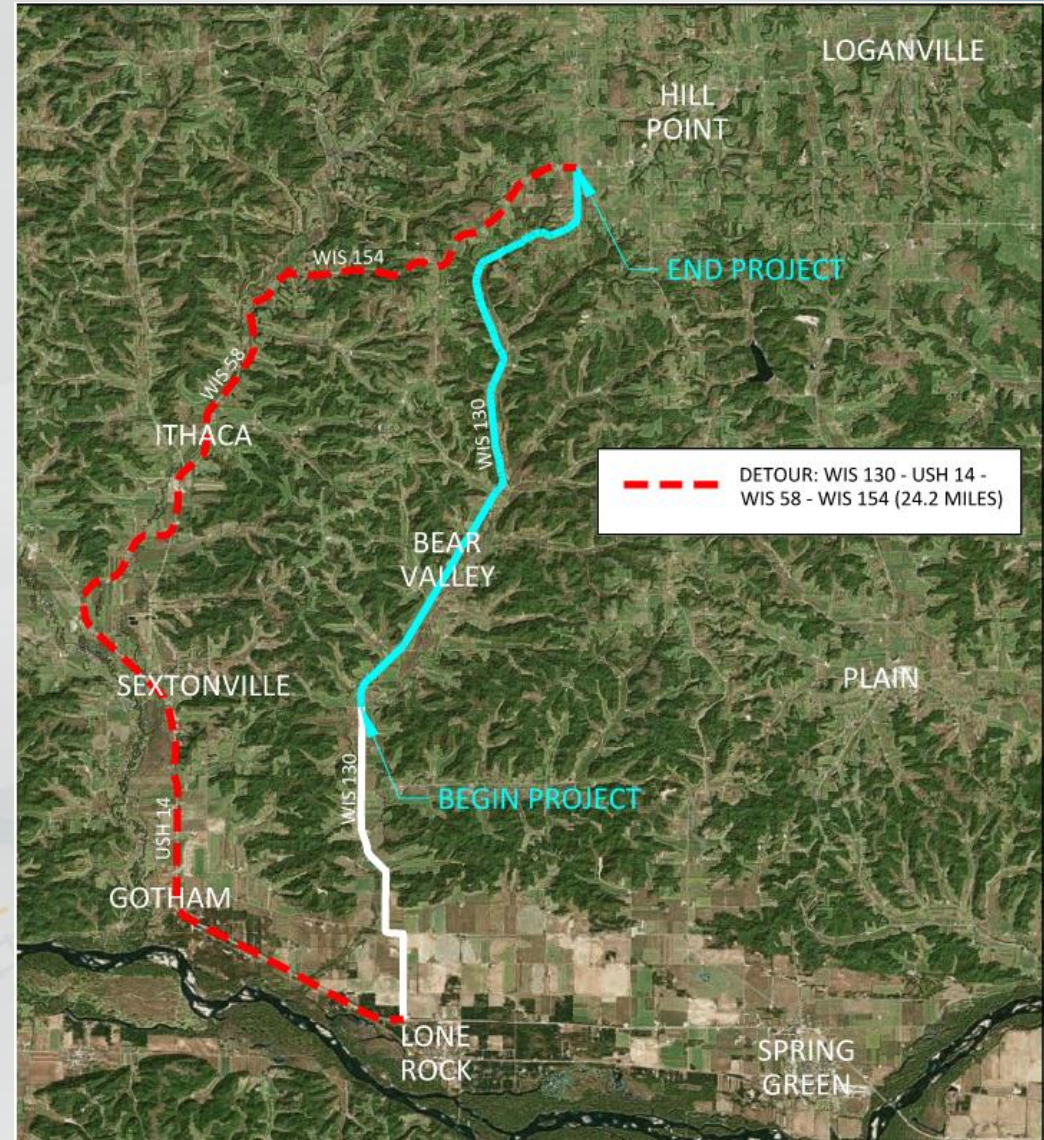


What are the project limits?



What will happen to WIS 130 traffic?

- Detour will be utilized.
- Access will be maintained for local traffic.
- Likely to be another pavement improvement project under construction on WIS 130 at the same time (white line on map).



Why do we need this project?

Safety Concerns



Energy Absorbing Terminal (EAT)



Existing end of guardrail on WIS 130



Why do we need this project?

Sidewalk/Curb & Gutter



Sidewalk deterioration in Bear Valley



Deteriorated Curb & Gutter in Bear Valley



Why do we need this project?

Pavement Deterioration



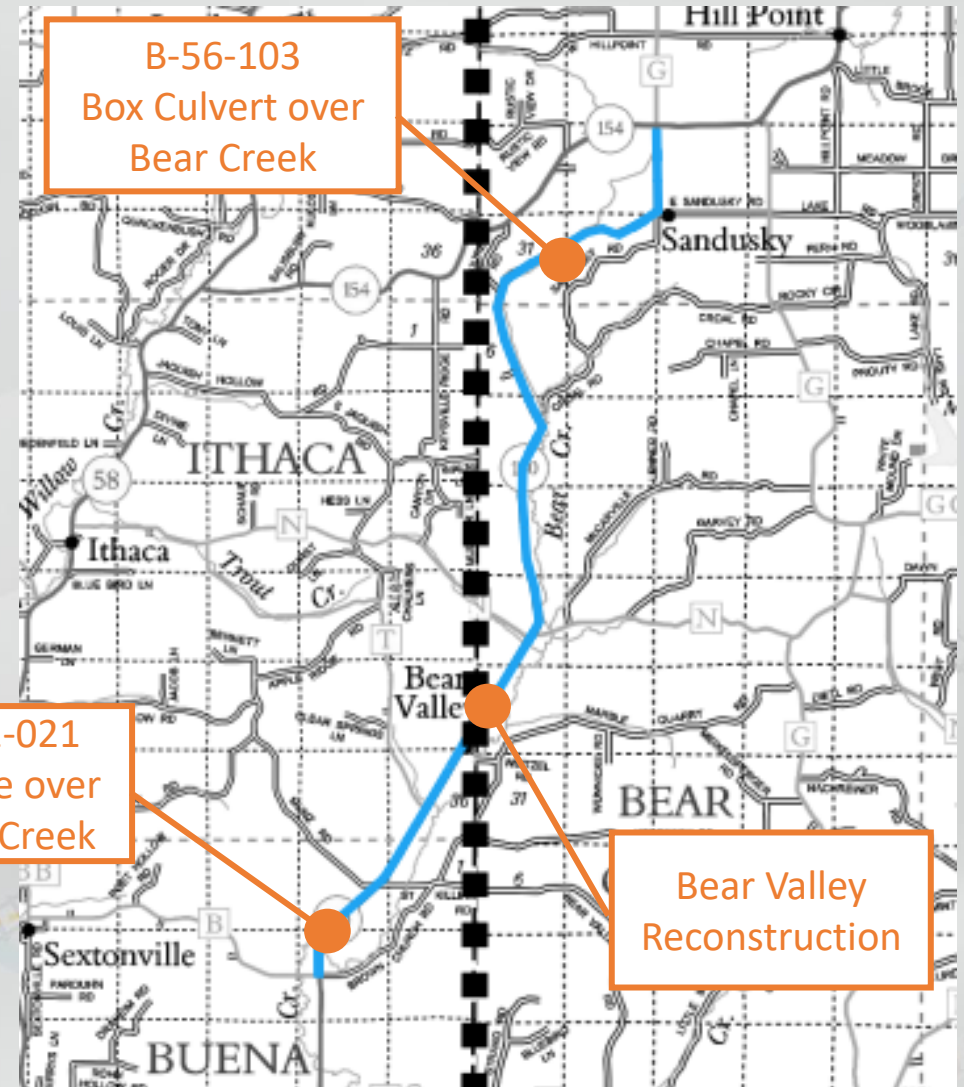
WIS 130 Alligator Cracking



WIS 130 Block Cracking



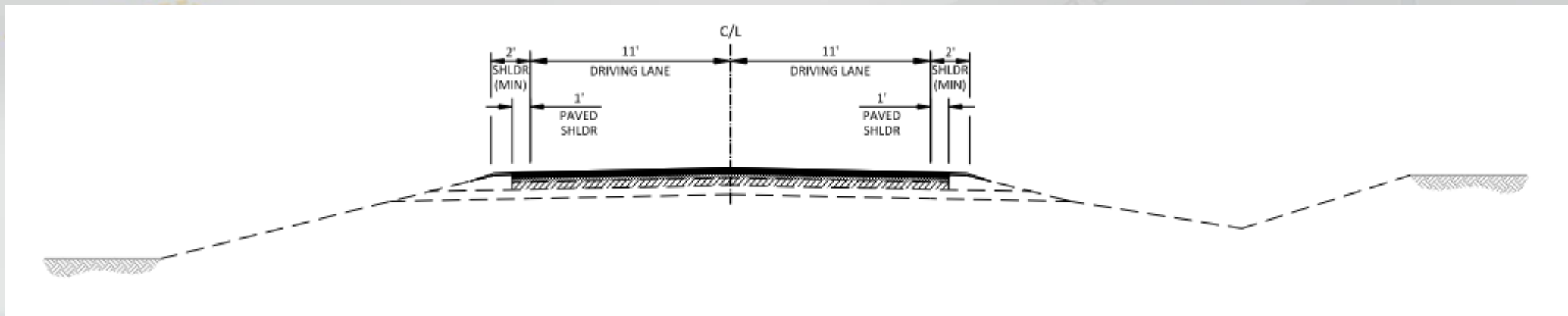
What improvements are proposed?



Design overview

Typical Section (Rural) - WIS 130

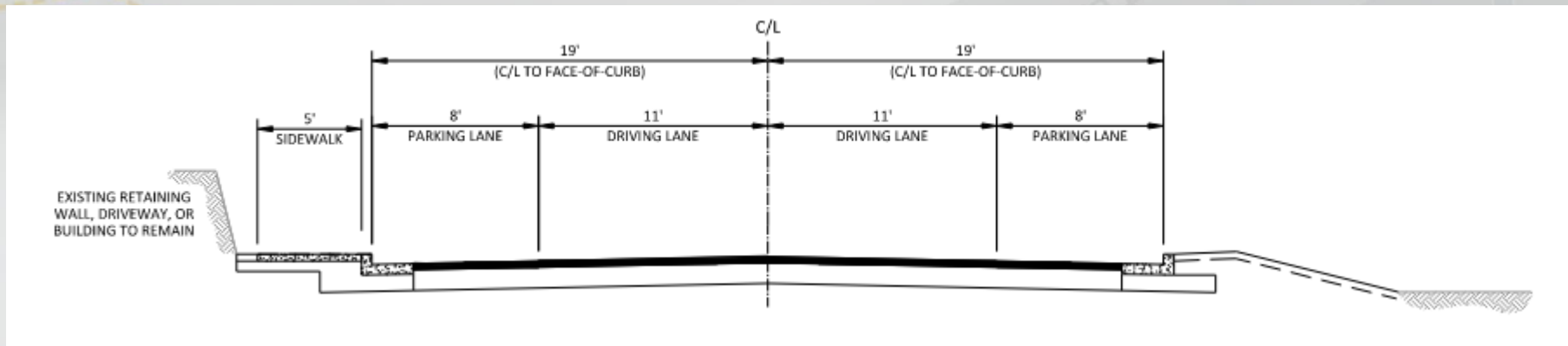
- Pavement
 - Mill and Remove 2-Inches Existing Pavement
 - Mill and Relay 3-Inches Existing Pavement
 - Pave 3.5-Inches
- New shoulder aggregate
- Pavement Markings



Design overview

Typical Section (Urban Reconstruct) - WIS 130

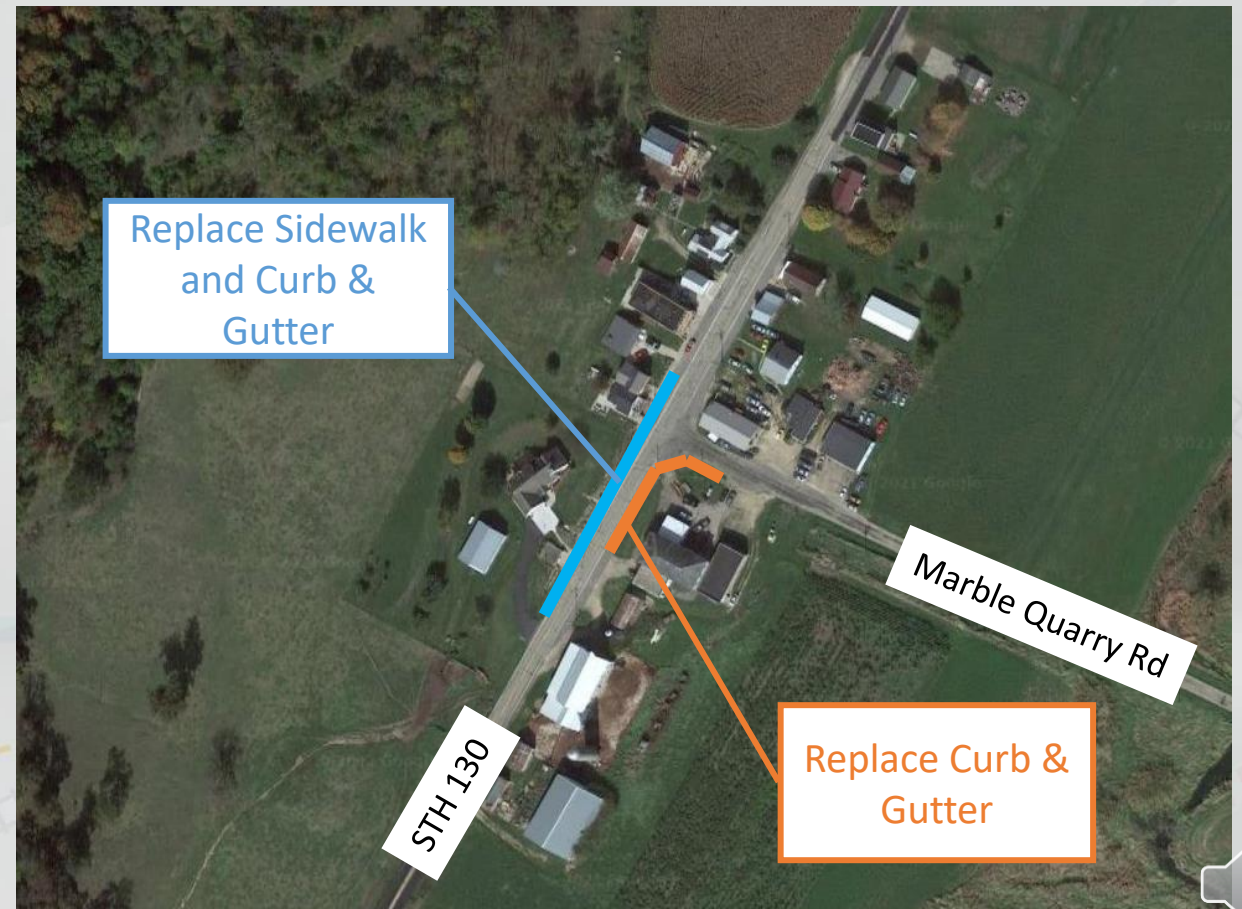
- Pavement (Reconstruct)
 - Remove Existing Pavement Structure
 - Place 12-Inches Base Material
 - Pave 3.5-Inches
- New Curb and Gutter
- New Sidewalk
- Replace Storm Sewer / Drainage Improvements



Design overview

Reconstruction in Bear Valley

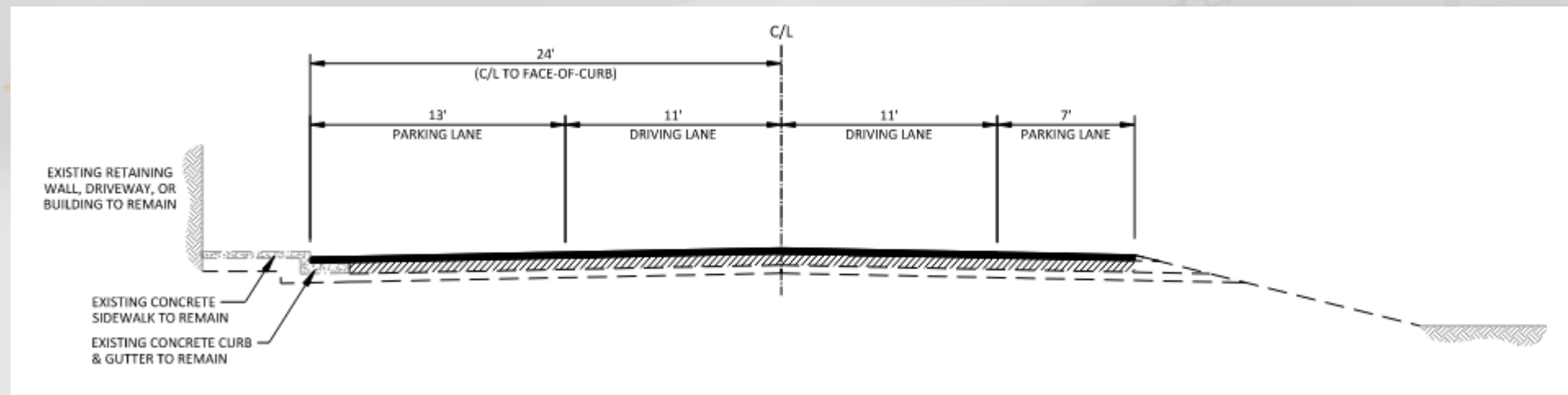
- Replace Sidewalk
- Replace Curb & Gutter
- Replace Storm Sewer & improve drainage



Design overview

Typical Section (Urban Resurfacing) - WIS 130

- Pavement (Resurfacing)
 - Remove 3.5-Inches
 - Pave 3.5-Inches
- Existing Sidewalk to Remain
- Existing Curb and Gutters to Remain



Design overview

B-52-021

- Asphalt Overlay
- Painting Girder
- Replace the existing guardrail and guardrail end terminals



Design overview

B-56-103

- Replace the existing guardrail and guardrail end terminals



Recent activity

- 2021
 - Survey completed
 - Agency & Utility Coordination Initiated
- 2022 & beyond
 - Preliminary roadway plans
 - Environmental report
 - Webpage created



What is next?

- Draft Environmental Report March 2022
- Preliminary Design Complete March 2022
- Design Study Report December 2022
- Final (90%) Plans June 2023
- PS&E (Advanceable) May 2025
- Let Date (Advanceable) September 2025
- Construction Spring/Summer 2026



Thank you for your time

If you have any comments, questions, or concerns please send Dan Tracy with Jewell Associates Engineers, Inc. an email, give him a call, or send him mail.



Project Contact Information

Marc Schweiger, PE

WisDOT Project Development Supervisor

Marc.Schweiger@dot.wi.gov

(608)-245-2633

Joshua Koebernick, PE

WisDOT Project Manager

Joshua.Koebernick@dot.wi.gov

(608)-246-3859

Dan Tracy, PE

Jewell Associates Engineers, Inc.

Consultant Project Manager

Dan.Tracy@jewellassoc.com

560 Sunrise Drive

Spring Green, WI 53588

(608)-588-7484