

WIS 16

La Crosse St to S Kinney Coulee Rd

Public Involvement
SW Region-La Crosse, La Crosse, WI

Project Team

WisDOT

John Bainter

WisDOT Supervisor

DAAR Engineering

Teri Schopp

Consultant Project Manager

SEH

Torey Leonard

Project Designer

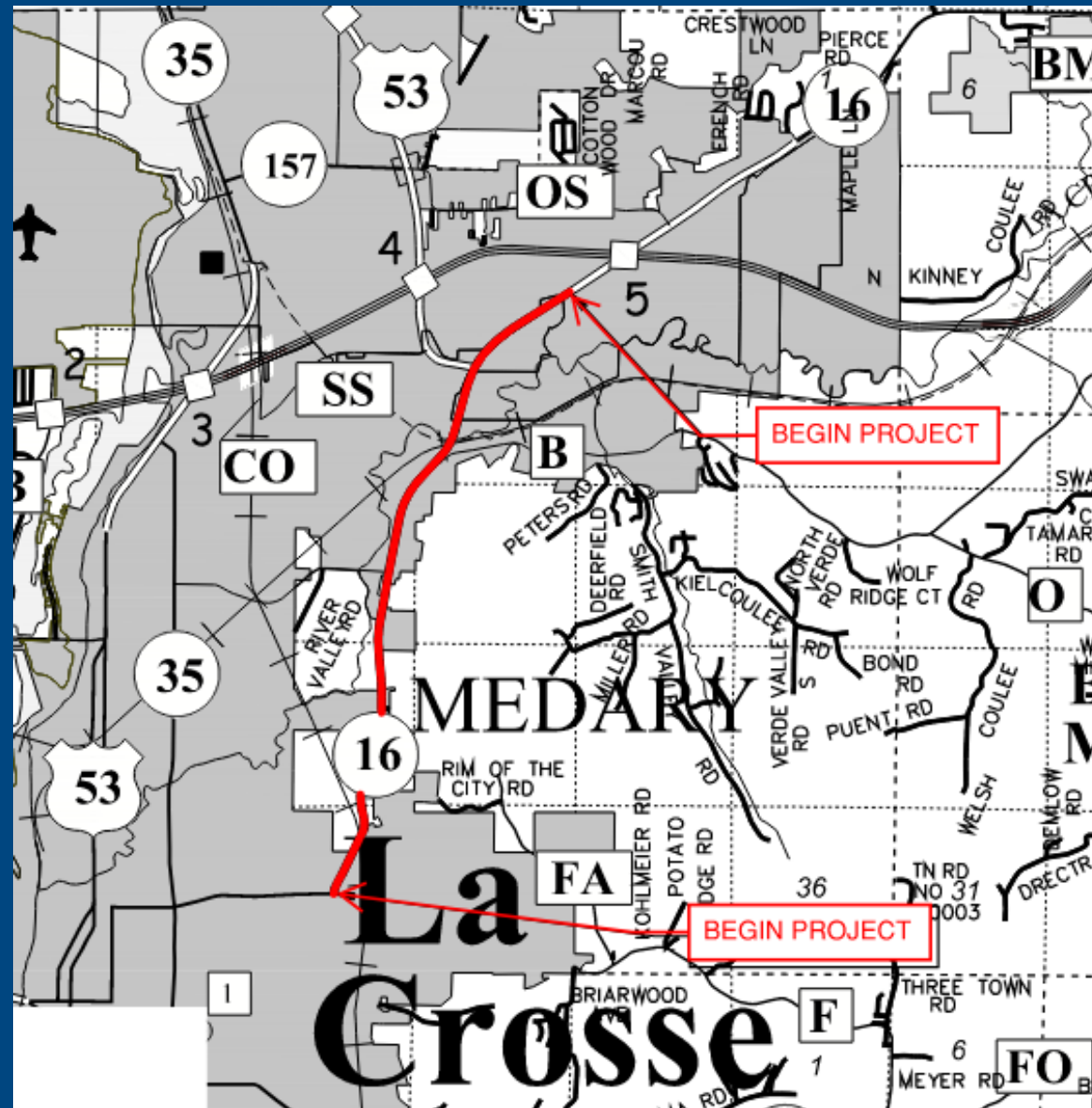


Public Involvement Objectives

- Introduce the project team
- Provide a project summary
 - Location and limits
 - Purpose and need
 - Proposed improvements
 - Traffic control concepts
- Collect input and feedback
- Answer questions about the project

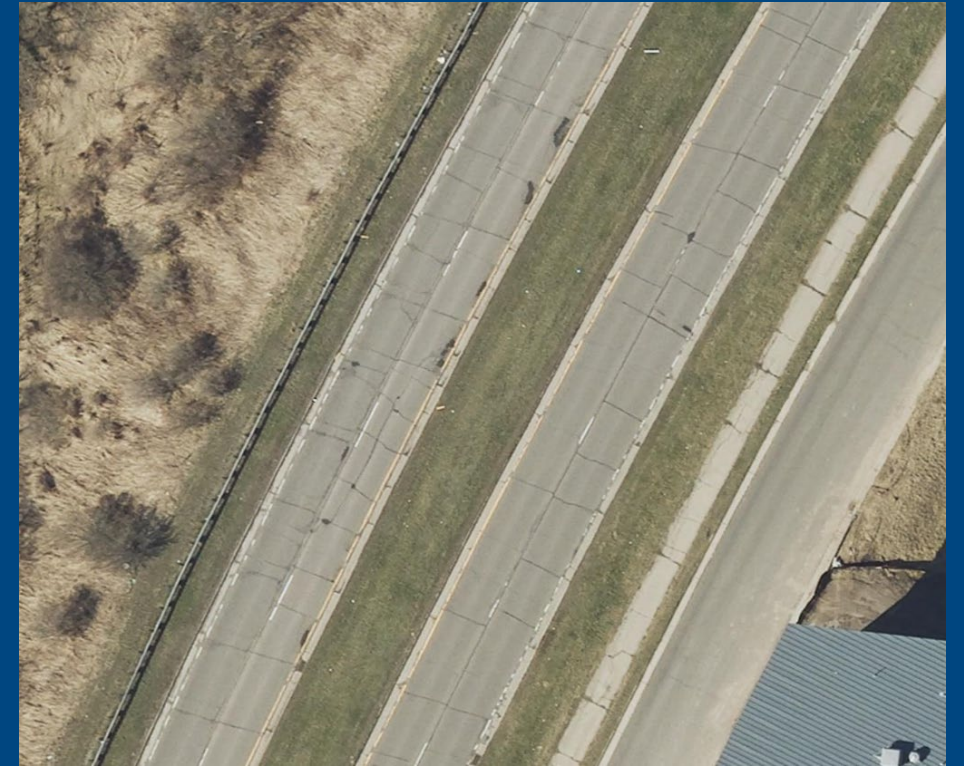


WIS 16 from La Crosse Street to S Kinney Coulee Rd

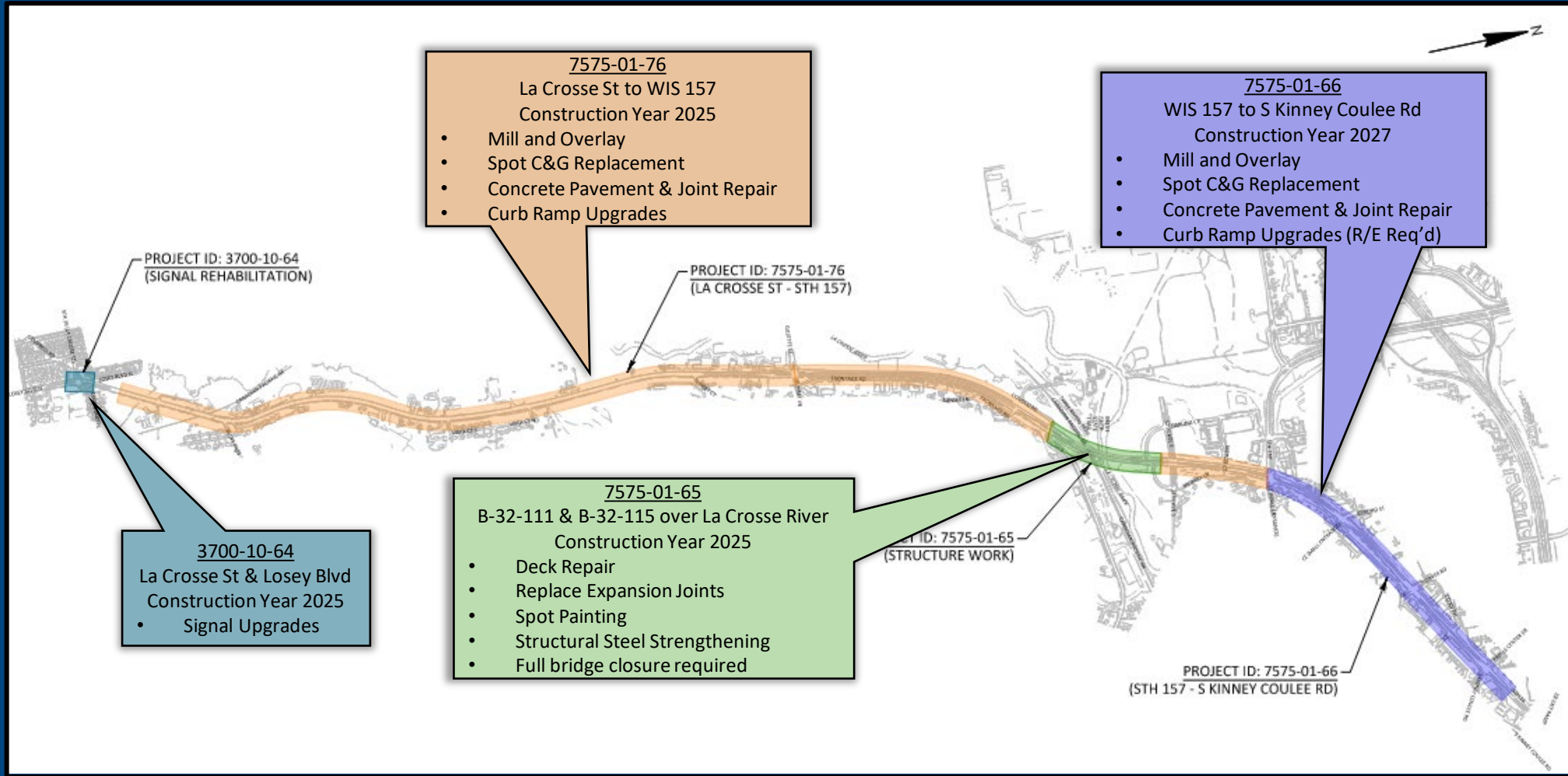


Project Purpose and Need

- Address deteriorating pavement and joints
- Extend service life of bridges over the La Crosse River
- Upgrade curb ramps to meet ADA standards
- Repair or replace deteriorating storm sewer structures at various locations
- Upgrade signals at La Crosse St and Losey Blvd



Proposed Improvements



Traffic Control Concepts

La Crosse Street to WIS 157

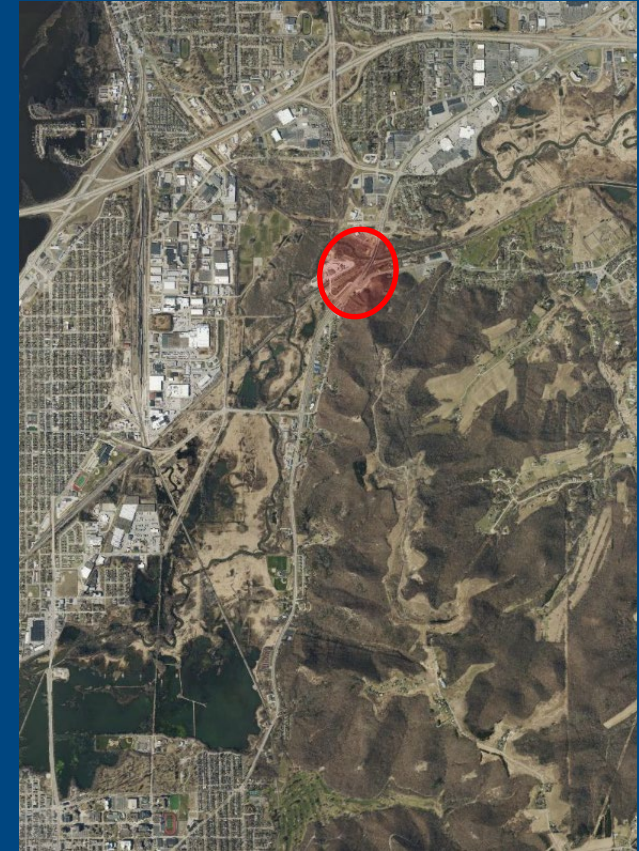
Concept	Benefits	Drawbacks
Single lane closures, night work	Low traffic impacts	Longer duration Nighttime noise
Single lane closures, daytime work	Only daytime noise	Longer duration Traffic impacts
Detour	Only daytime noise Shorter duration	Traffic impacts



Traffic Control Concepts

Bridges over La Crosse River

Concept	Benefits	Drawbacks
Single lane closures, bidirectional traffic	Bidirectional travel	EMS Access Traffic delays
Detour one direction	Less traffic delays EMS access	Detour length



Traffic Control Concepts

WIS 157 to S Kinney Coulee Rd

Concept	Benefits	Drawbacks
Single lane closures, bidirectional traffic	Bidirectional travel Existing access maintained	Temporary signals Traffic delays Longest Duration
Detour one direction at a time	Medium duration Access mostly maintained	Alternate business access
Road closed	Shortest duration	Alternate business access



Project Contacts

Primary Contact

Torey Leonard, PE
SEH
Project Designer
(608) 498-4019
tleonard@sehinc.com

Additional Contacts

John Bainter, PE
WisDOT Supervisor
(608) 785-9729
John.Bainter@dot.wi.gov

Teri Schopp, PE
DAAR Engineering
Consultant Project Manager
teri.Schopp@daarcorp.com
(920) 342-2176

Project Website: [WIS 16 La Crosse County \(wisconsindot.gov\)](http://wisconsindot.gov)



La Crosse Major Highway Project (Future Project)

In December 2021, the Wisconsin Transportation Project Commission approved the department to study new alternatives that address safety, congestion and maintain a state of good repair on WIS 16 from US 53 (4th St) to I-90.

Study Website:

wisconsindot.gov/Pages/projects/by-region/sw/533516-lacrosse/default.aspx

