



# WIS 19 and Westmount Drive intersection

## Sun Prairie, Dane County

### Public Involvement

WisDOT Southwest Region  
Madison Office  
2101 Wright Street  
Madison WI 53704 2583  
Phone: (608) 246 3800  
[David2.Schmidt@dot.wi.gov](mailto:David2.Schmidt@dot.wi.gov)

The Wisconsin Department of Transportation (WisDOT) is conducting a public involvement meeting to present a new alternative for the proposed project along WIS 19 at the Westmount Drive intersection in the city of Sun Prairie. There are now two alternatives under consideration:

- Offset Left Turn Lanes on WIS 19
- Single Lane Roundabout (Preferred)

#### Project purpose

The purpose of this project is to reduce the overall number and severity of crashes along WIS 19 at the Westmount Drive intersection.

#### Previous Coordination

After the public involvement meeting the project team worked with WisDOT Division of Transportation Investment Management (DTIM) to explore other mechanisms to fund a larger improvement at the Westmount Drive intersection. Typically, safety improvement projects are funded within the Federal Highway Safety Improvement Program (HSIP). However, during the HSIP application process, the only fundable solution for this intersection was offset left turn lanes. After further discussions, the project team ran a prediction analysis on this intersection to evaluate potential monetized safety benefits and determine what a safety benefit to construction cost ratio would show if a roundabout were installed at this intersection. Based on WisDOT policies a roundabout would be fundable up to \$1.95 million. The city of Sun Prairie has agreed to fund the remaining costs for a roundabout construction which allows a roundabout to be a possible alternative. With support from the city, the roundabout is currently the preferred alternative. After review of public comments from this March 2023 PIM, the department will select an official preferred alternative.

#### Offset Left Turn Lanes on WIS 19 (Figure 1 on reverse)

- Installation of offset left turn lanes on WIS 19 to provide safe refuge for left turning traffic.
- Updates to existing curb ramps to meet Americans with Disabilities Act (ADA) requirements.
- Preliminary construction cost: \$750,000 - \$850,000
- Funding Source: HSIP
- Schedule: Construction in 2025

#### Single Lane Roundabout (Figure 2 on reverse)

- Installation of a single lane roundabout.
- Pedestrian facilities included on all legs of the roundabout.
- Preliminary construction cost: \$2.3 - \$2.5 million
- Funding Source: 3R; WisDOT up to \$1.95 million; City of Sun Prairie to cover remainder
- Schedule: Construction in 2026

#### Website information

A copy of the presentation (PDF format) is also available to view along with this handout on the project website at: [wisconsindot.gov/Pages/projects/by-region/sw/wis19-westmountintersection/default.aspx](https://wisconsindot.gov/Pages/projects/by-region/sw/wis19-westmountintersection/default.aspx). Scan the QR code with your smartphone camera to visit the project website.



A comment form is available for written comments regarding the proposed project. All persons interested in the project are encouraged to provide input by completing the comment form tonight or contacting project staff via email, postal mail, or phone. Please provide comments by April 29, 2023. Your input is welcome and appreciated throughout the design process.

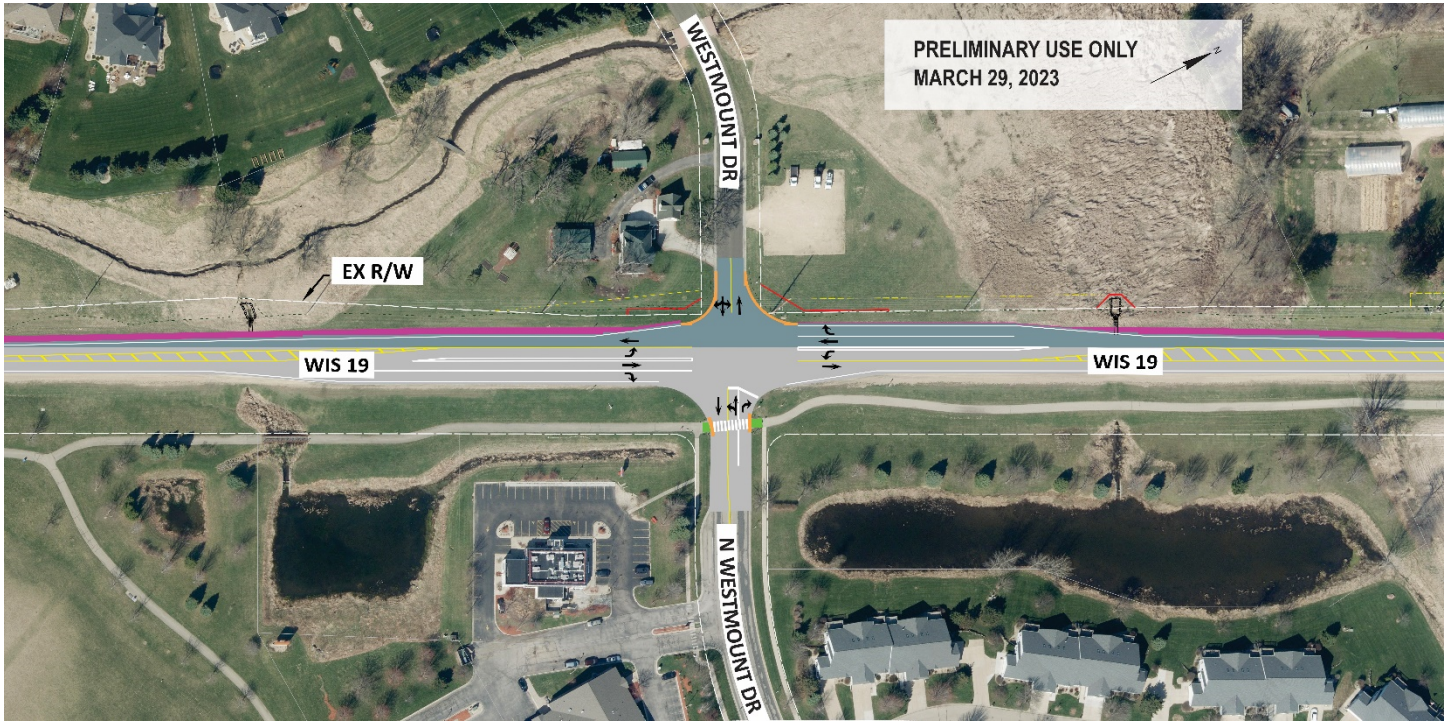
#### For additional information about the project, contact:

**David Schmidt, P.E.**  
WisDOT Project Manager  
(608) 246 3867  
[David2.Schmidt@dot.wi.gov](mailto:David2.Schmidt@dot.wi.gov)

**Brian Genskow**  
Consultant Project Manager  
(608) 298 5422  
[bgenskow@srfconsulting.com](mailto:bgenskow@srfconsulting.com)



**Figure 1: Offset Left Turn Lanes on WIS 19**



**Figure 2: Single Lane Roundabout**

