

Project 5080-09-03/73

WIS 23

**Elder Ridge Road to County K
Sauk County**

Public Involvement Meeting

November 2021

Ellery Schaffer, P.E.

Jewell Associates Engineers, Inc.

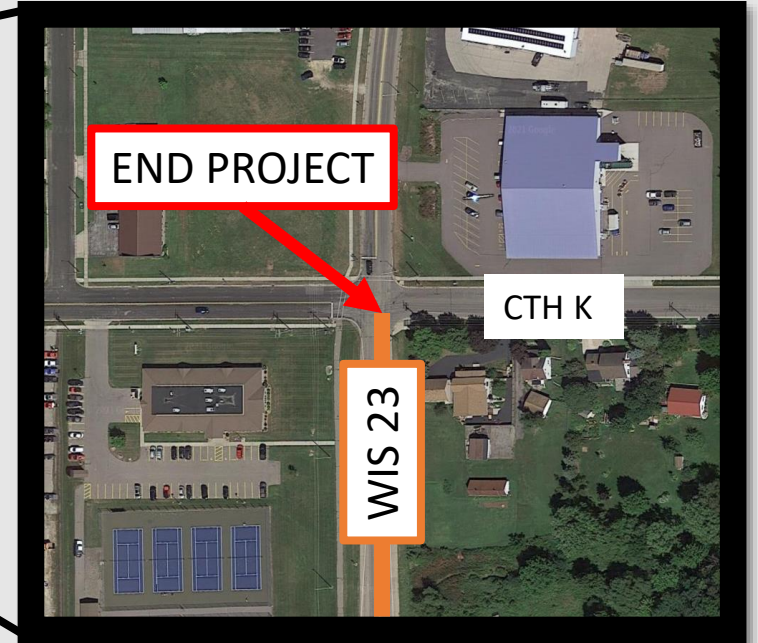
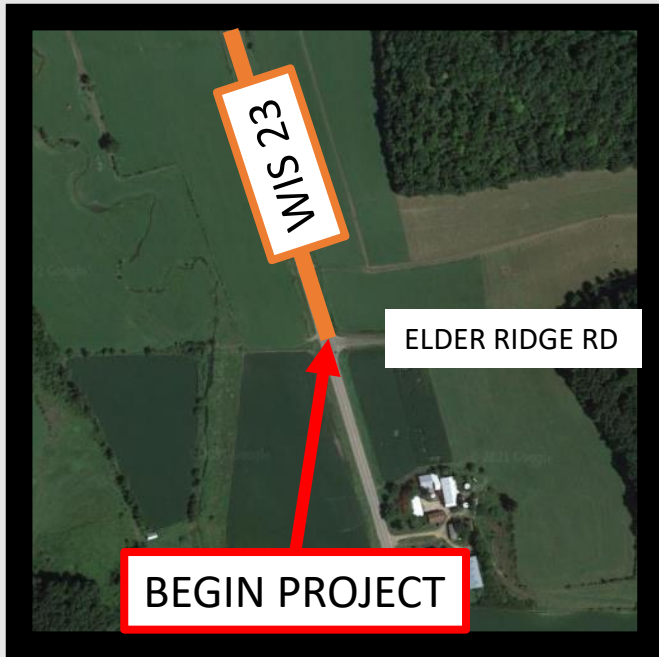


Presentation Agenda

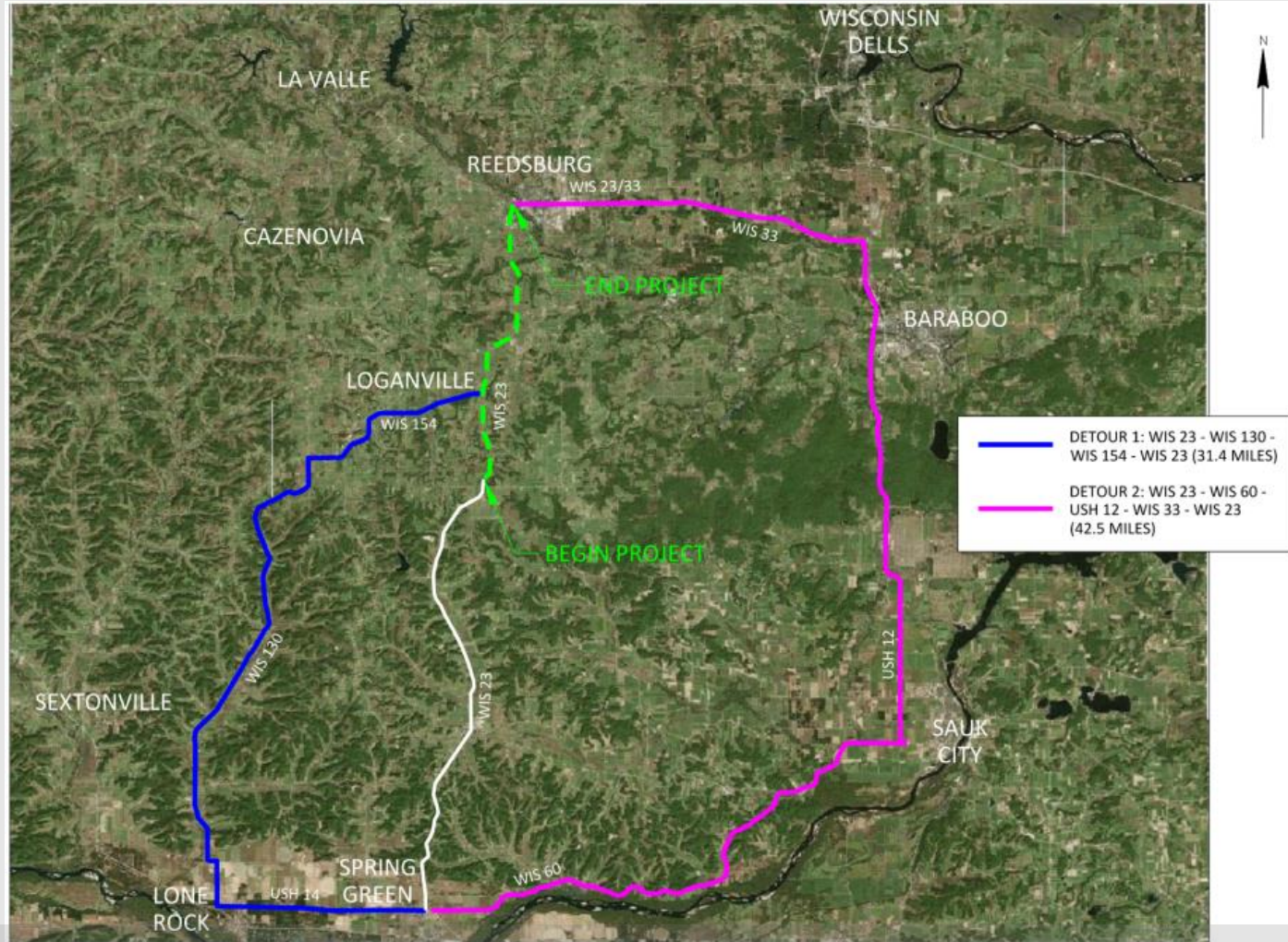
- Project Limits
- Project Purpose & Need
- Design Overview
- Recent Activities
- Upcoming Schedule
- Contact Information



What are the project limits?



What will happen to WIS 23 traffic?



Why do we need this project?

Pavement Deterioration



WIS 23 Pavement Rutting



WIS 23 Pavement Cracking

Why do we need this project?

Safety Concerns



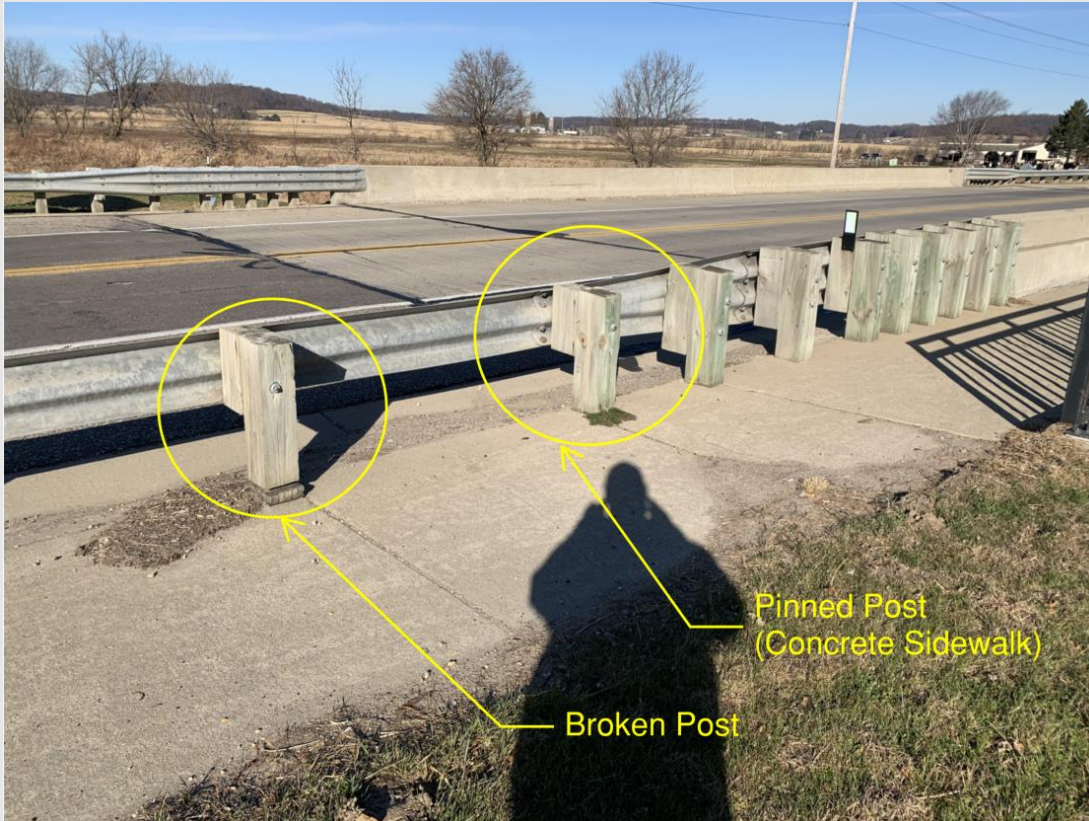
Non-ADA Compliant Crosswalk



Non-ADA Compliant Crosswalk

Why do we need this project?

Safety Concerns



Pinned Post
(Concrete Sidewalk)

Broken Post

Guardrail Posts Broken / Pinned



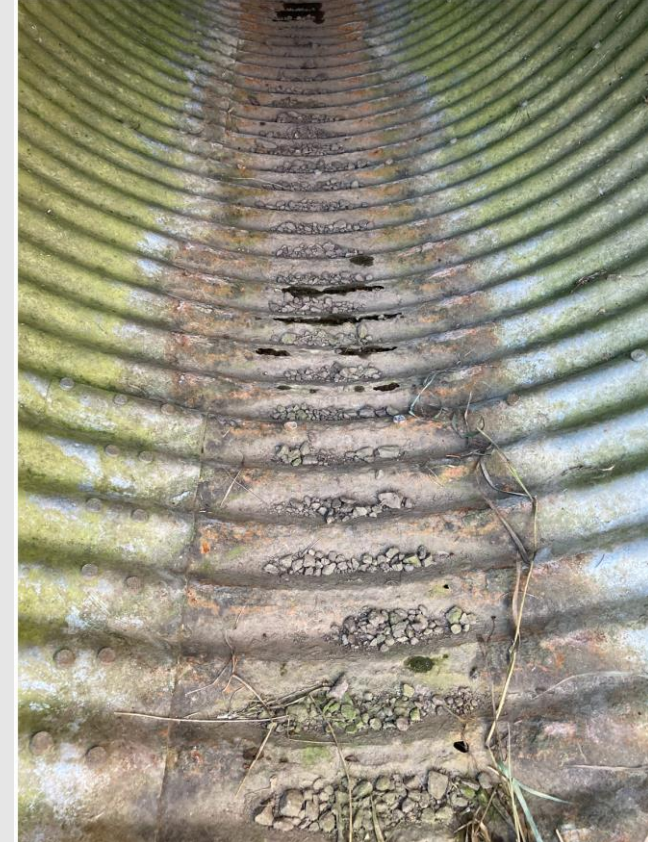
Substandard Guardrail Terminal Ends / Insufficient
Guardrail Height

Why do we need this project?

Drainage Concerns



Culvert Pipe – Poor Condition

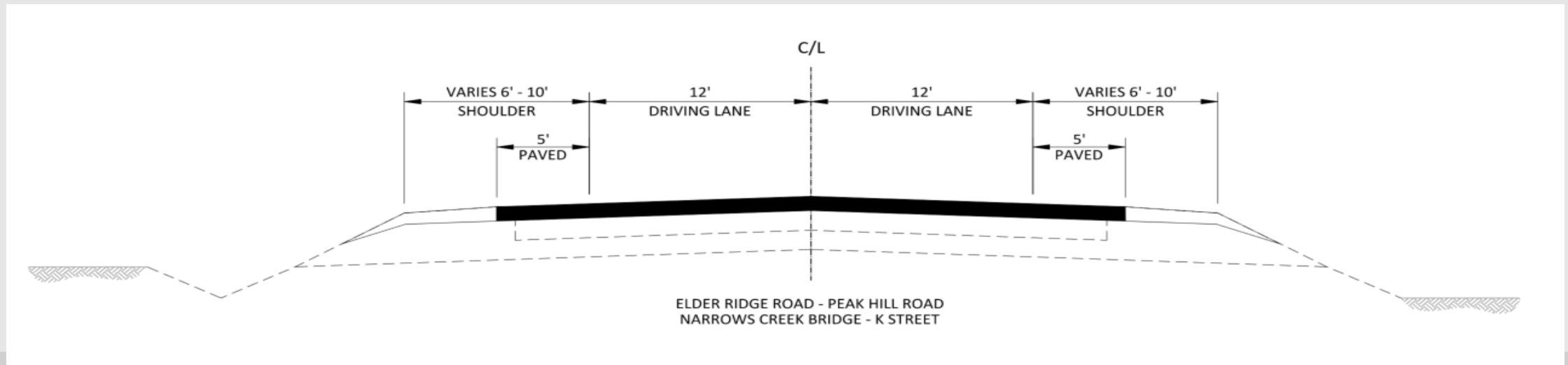


Culvert Pipe – Poor Condition

Design overview

Typical Section (Rural) – WIS 23

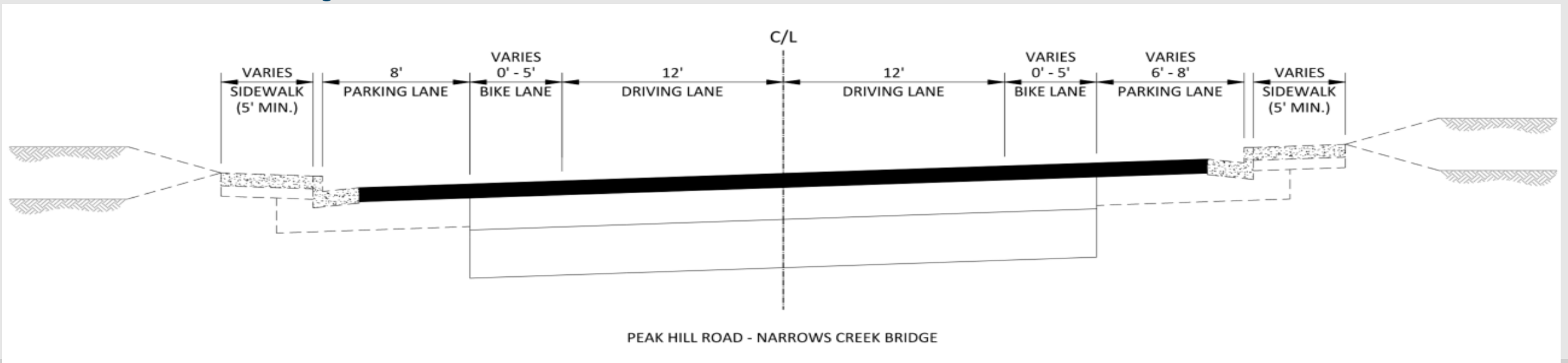
- Pavement
 - Remove – 4 – 5.5 inches
 - Pave – 5.5 inches
- New shoulder aggregate
- New centerline & shoulder rumble strips
- Pavement Markings



Design overview

Typical Section (Urban) – WIS 23

- Pavement
 - Remove – 4 – 5.5 inches
 - Pave – 5.5 inches
- Sanitary Sewer and Watermain Replacement
- Subgrade Improvement
- Pavement Markings



Design overview

Curb Ramp Replacement – Village of Loganville

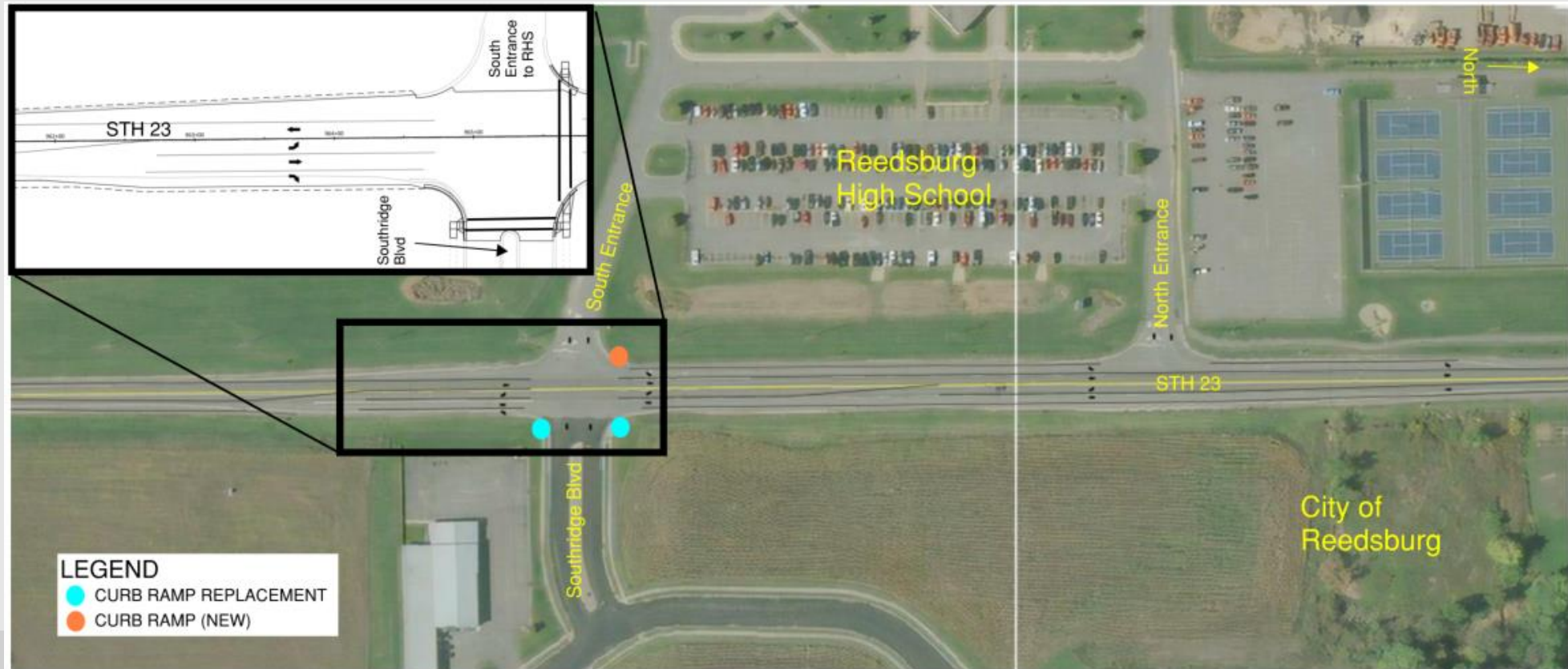
- Curb Ramp Replacement (19)



Design overview

Intersection Improvement – City of Reedsburg

- Inclusion of Left Turn Lanes at Southridge Blvd and North Entrance to Reedsburg High School
- Curb Ramp Replacement (3) / New Curb Ramp at WIS 23 / Southridge Blvd



Design overview

Guardrail Replacement

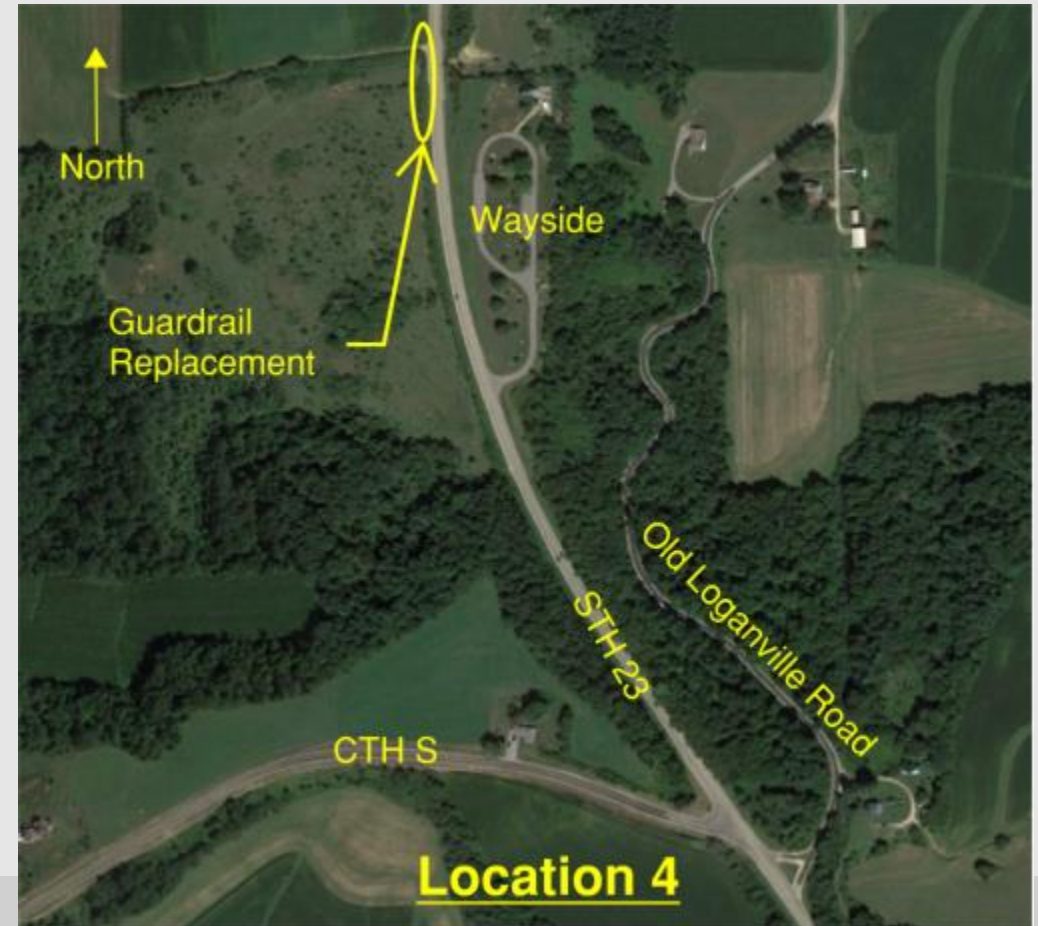
- Guardrail replacement to current design standards



Design overview

Guardrail Replacement Cont'd...

- Guardrail replacement to current design standards



Design overview

Drainage

- Replace Deteriorated Culverts (5)
- Add Culvert End Markers



Recent activity

- 2020
 - Survey completed
- 2021 and beyond
 - Preliminary roadway plans
 - Began drafting environmental report
 - Webpage created
 - Sent initial notification letters



What is next?

- Environmental Report February 2022
- Preliminary Design Complete March 2022
- Transportation Project Plat May 2022
- PS&E August 2024
- Let Date December 2024
- Begin Construction Spring 2025
- End Construction Fall 2025



Thank you for your time

If you have any comments, questions, or concerns please send Ellery Schaffer with Jewell Associates Engineers, Inc. an email, give him a call, or send him mail.



Project Contact Information

Paul Valenti, PE

WisDOT Project Manager

paul.valenti@dot.wi.gov

(608)-785-9053

Mahesh Shrestha, PE

WisDOT Project Manager

mahesh.shrestha@dot.wi.gov

(608)-245-2674

Ellery Schaffer, PE

Jewell Associates Engineers, Inc.

Consultant Project Manager

ellery.schaffer@jewellassoc.com

560 Sunrise Drive

Spring Green, WI 53588

(608)-588-7484

