



WIS 26 – Project ID 1390-01-06/76
Center Street to WIS 33
City of Juneau, Town of Oak Grove

Shaun Anderson, P.E.
WisDOT Project Manager

Public Involvement Presentation
January 2022



Dodge County

Presentation outline

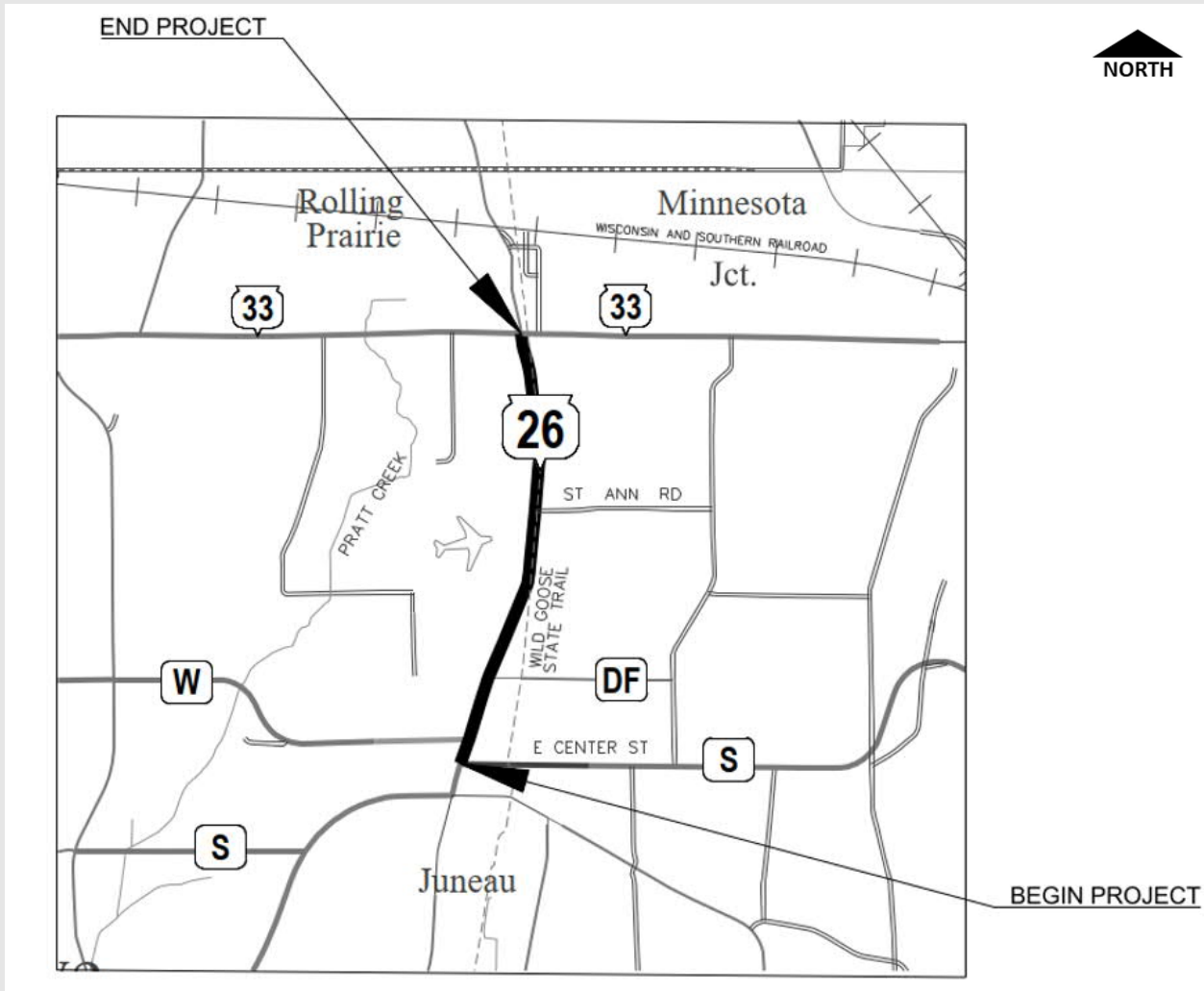
- Location
- Purpose and need
- Proposed improvements
- Real estate impacts
- Traffic impacts and detours
- Schedule
- Contact information
- Comments



Existing WIS 26



Project location



- Limits
 - Center Street (County S) to WIS 33
- Length
 - 2.7 miles

Project purpose and need

- Purpose

- The purpose of the project is to improve the pavement surface.

- Need

- The existing pavement is deteriorated with extensive cracking and has poor ride quality. The concrete pavement joints at the Center Street (County S) and County W intersections are failing. Without improvements, the existing pavement will continue to deteriorate, resulting in increased maintenance costs.



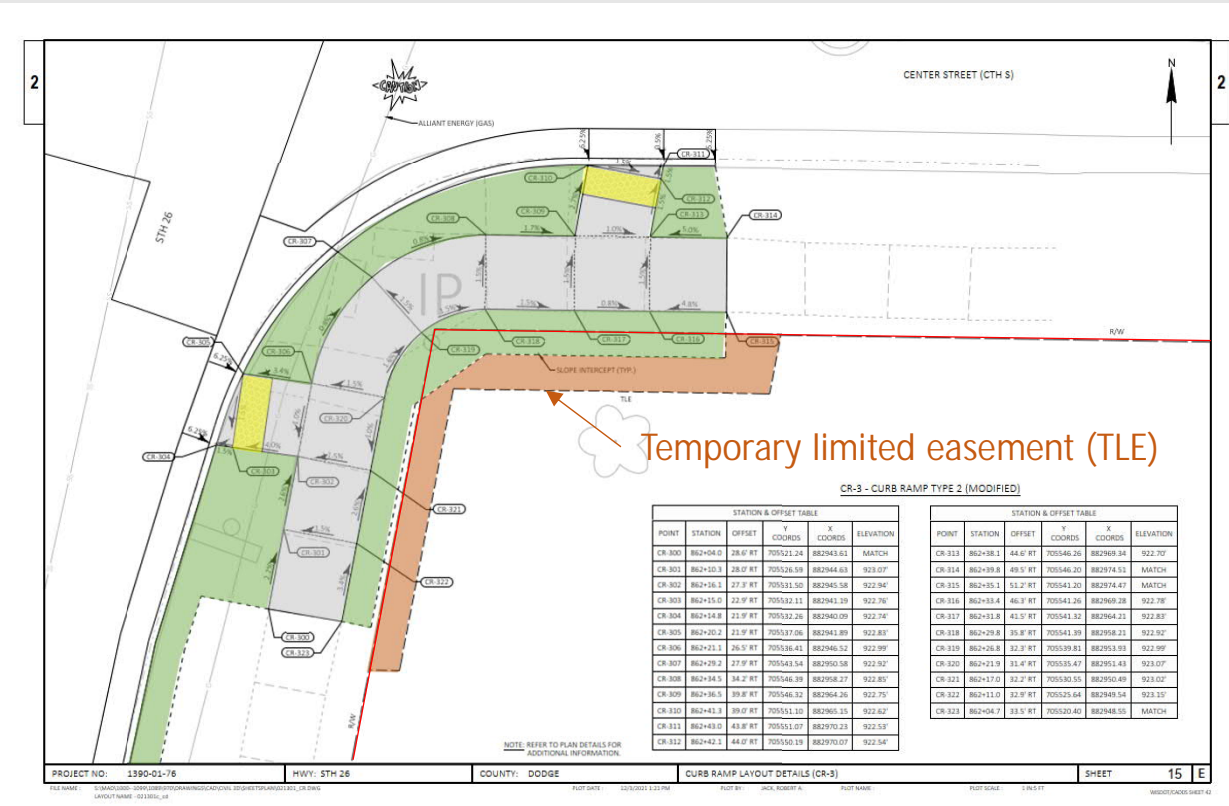
Proposed improvements

- Center Street (County S), County W, and County DF intersections:
 - Replace deteriorated concrete panels.
 - Replace the existing pedestrian curb ramps to meet Americans with Disabilities Act (ADA) standards to the extent feasible.
- WIS 26 between County DF and WIS 33:
 - Mill and overlay the existing asphalt pavement.
 - Install centerline rumble strips.



Real estate improvements

- Center Street (County S), County W, and County DF intersections:
 - Temporary limited easements (TLE's) will be required at curb ramp replacement locations.
 - TLE's will be for the duration of the project only and are needed for regrading and restoring slopes adjacent to replacement sidewalk and curb ramps.



Preliminary curb ramp replacement detail (with TLE)



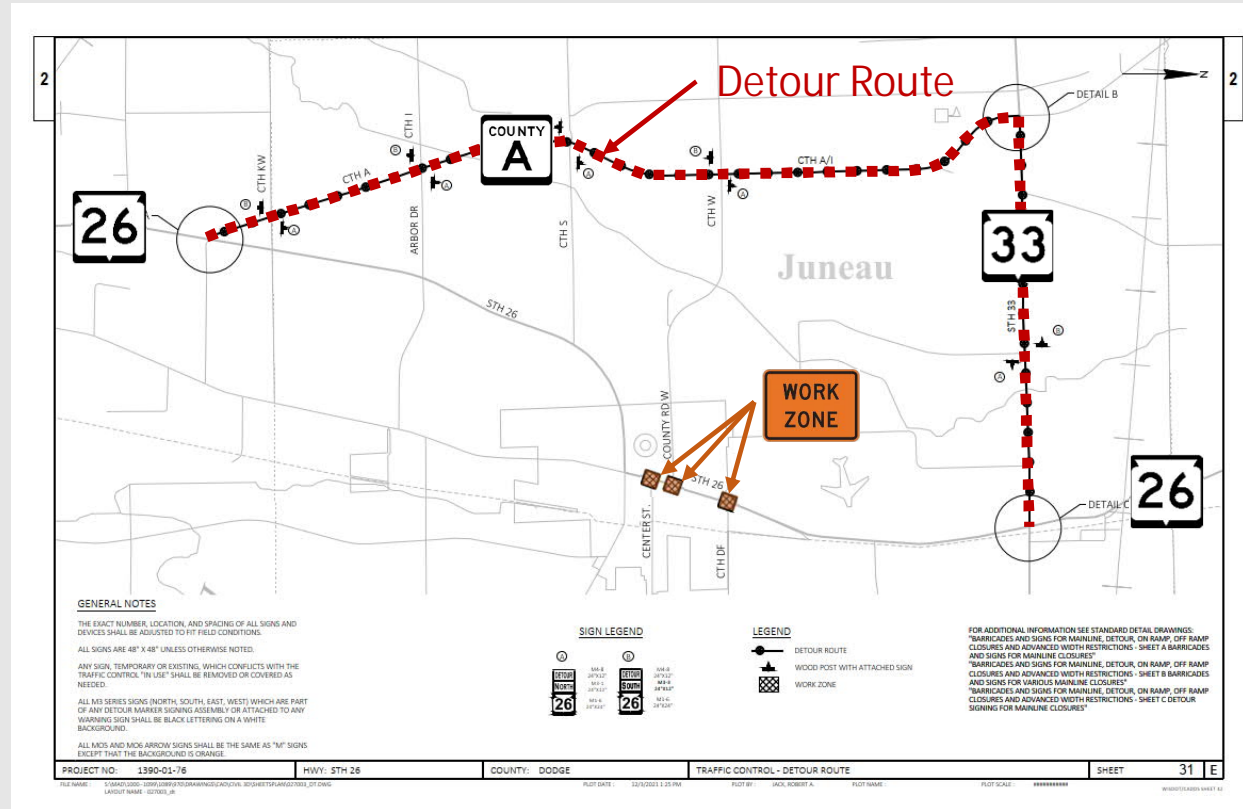
Traffic impacts and detours

- Detour (local access only)
 - WIS 26 will be open to local traffic only; through traffic will be detoured.
 - This staging will occur during concrete pavement panel and pedestrian curb ramp replacement locations at the intersections of Center Street (County S), County W, and County DF.
- Flagging operations
 - Upon completion of the concrete pavement and pedestrian curb ramp replacement, the resurfacing of WIS 26 between County DF and WIS 33 will occur during the use of single-lane closures under flagging operations.



Traffic impacts and detours (cont.)

- Detour Route: WIS 26–County A–WIS 33–WIS 26



Note: During intersection concrete pavement panel and pedestrian curb ramp replacement.



Project Schedule

- Environmental process complete – March 2022
- Preliminary design complete – July 2022
- Real estate process– August 2022 to June 2023
- Final plans complete – August 2023
- Earliest construction – Spring/Summer 2024*

**Note: Based on advanceable schedule (subject to change depending on funding).*



Project contact information

Shaun Anderson, P.E.
WisDOT Project Manager
SW Region – Madison Office
2101 Wright Street
Madison, WI 53704
ShaunM.Anderson@dot.wi.gov
(608) 246-5324

Ken Swanson, P.E.
Consultant Project Manager
Strand Associates, Inc.
910 West Wingra Drive
Madison, WI 53715
ken.swanson@strand.com
(608) 251-4843





WIS 26 – Project ID 1390-01-06/76
Center Street to WIS 33
City of Juneau, Town of Oak Grove

Thank you for your interest
and comments!

Public Involvement Presentation

January 2022



Dodge County