

WIS 58

US 14 – La Valle, Lee Lake Bridge to WIS 33

Project: 5752-00-02/72

Wisconsin Department of Transportation

Virtual Public Involvement Meeting



# Project Team

---

- WisDOT Project Team

- Karla Knorr, PE, SW Region Project Supervisor
- David Schmidt, PE, SW Region Project Manager
- Anthony Johnson, SW Region Project Leader



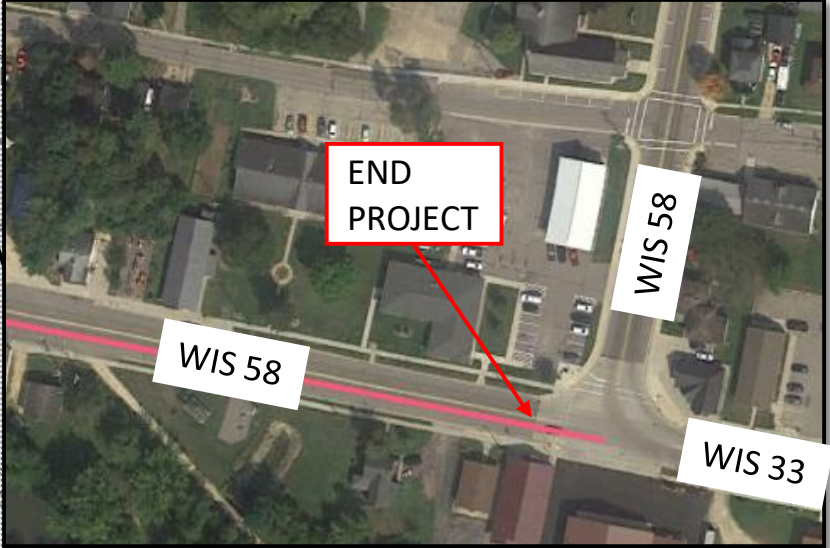
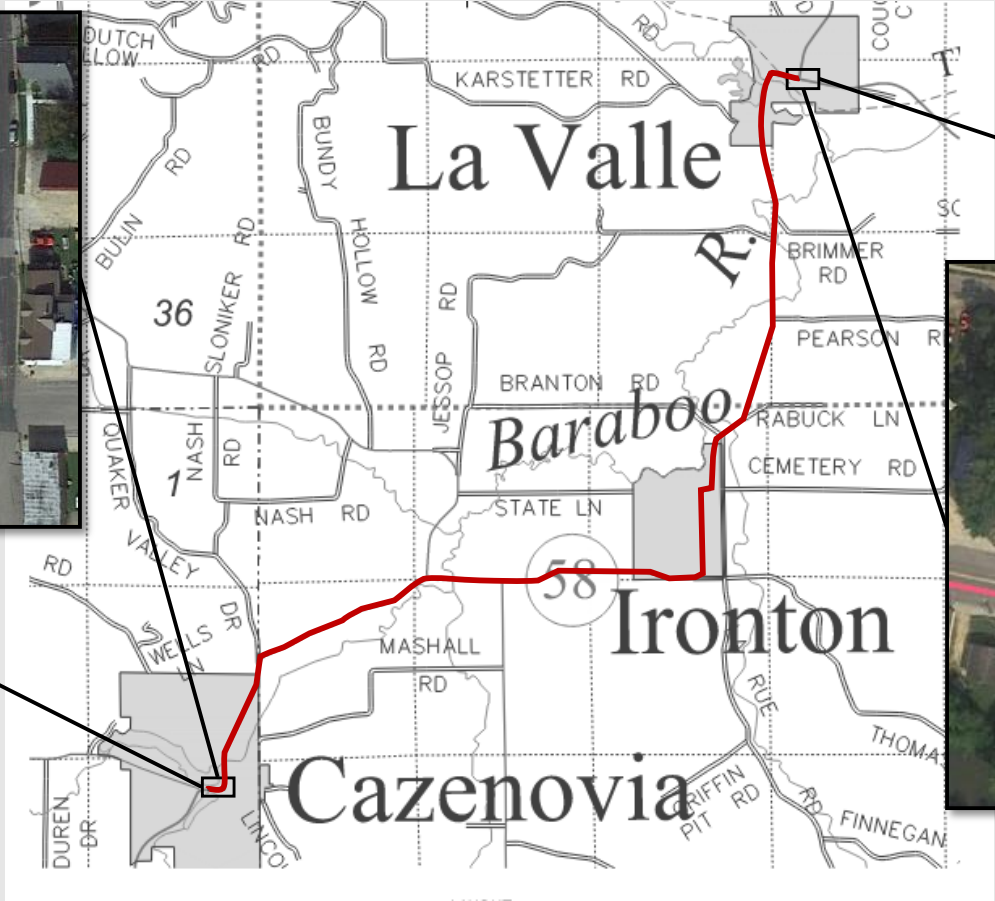
# Presentation Agenda

---

- Project Limits
- Project Purpose & Need
- Design Overview
- General Project Information
- WIS 58 Traffic During Construction
- Recent Activities
- Upcoming Schedule
- Contact Information



# Project Limits



# Project Need

## Pavement Deterioration



WIS 58 Alligator Cracking Urban Areas



WIS 58 Alligator Cracking and Rutting in La Valle



# Project Need

## Safety Concerns



Energy Absorbing Terminal (EAT)



Existing end of guardrail on WIS 58

# Project Need

## Safety Concerns



Need to widen turning radius at W Main St/W North St in La Valle



# Project Need

## Superelevation Adjustment



La Valle Mill Pond – 375' Pavement Reconstruct





# Project Need

## Americans with Disabilities Act (ADA) Compliance



Crossing at North St in Cazenovia



Crossing at 4<sup>th</sup> Street in Ironton

# Project Need

## Culvert Replacements

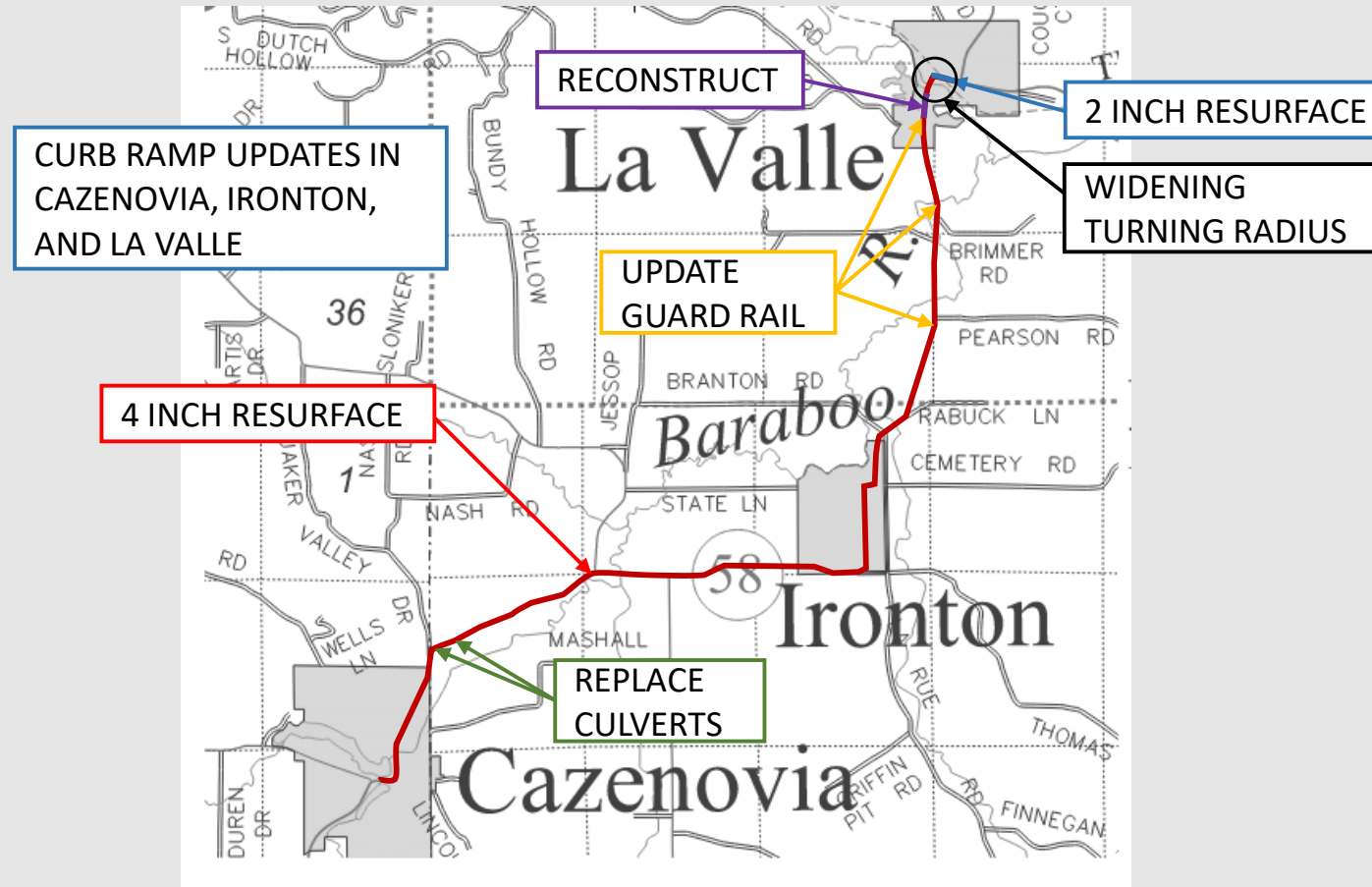


Culvert Pipe 0.08 miles north of Richland-Sauk Co Line



Culvert Pipe 0.35 miles north of Richland-Sauk Co Line

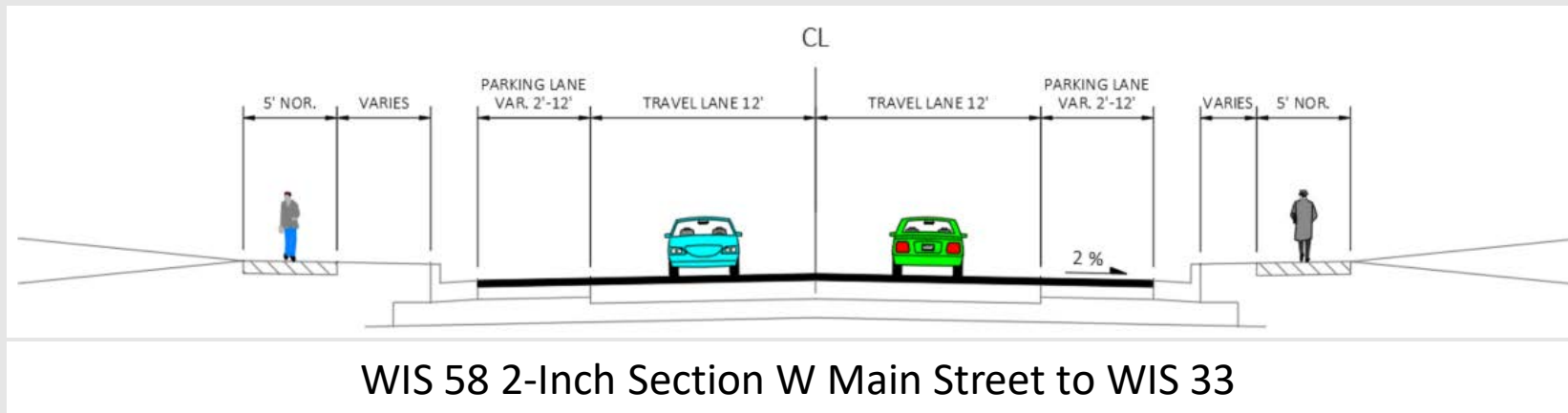
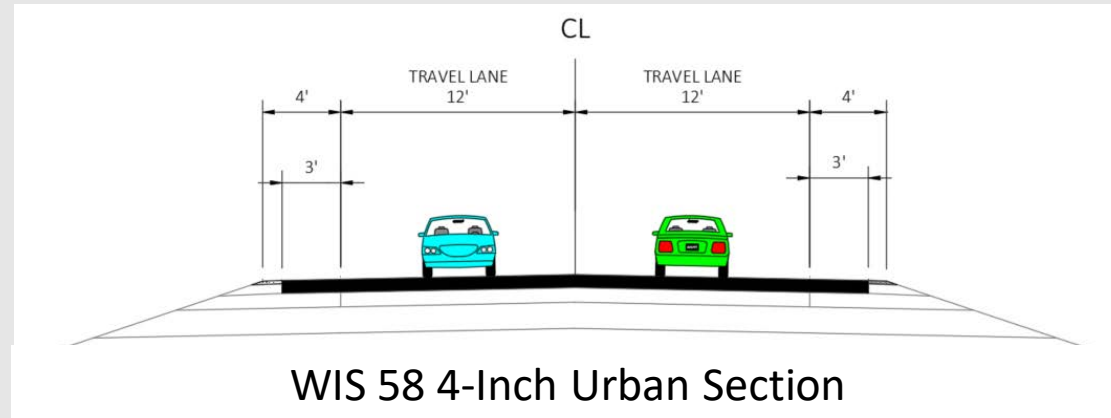
# Proposed Improvements





# Design Overview

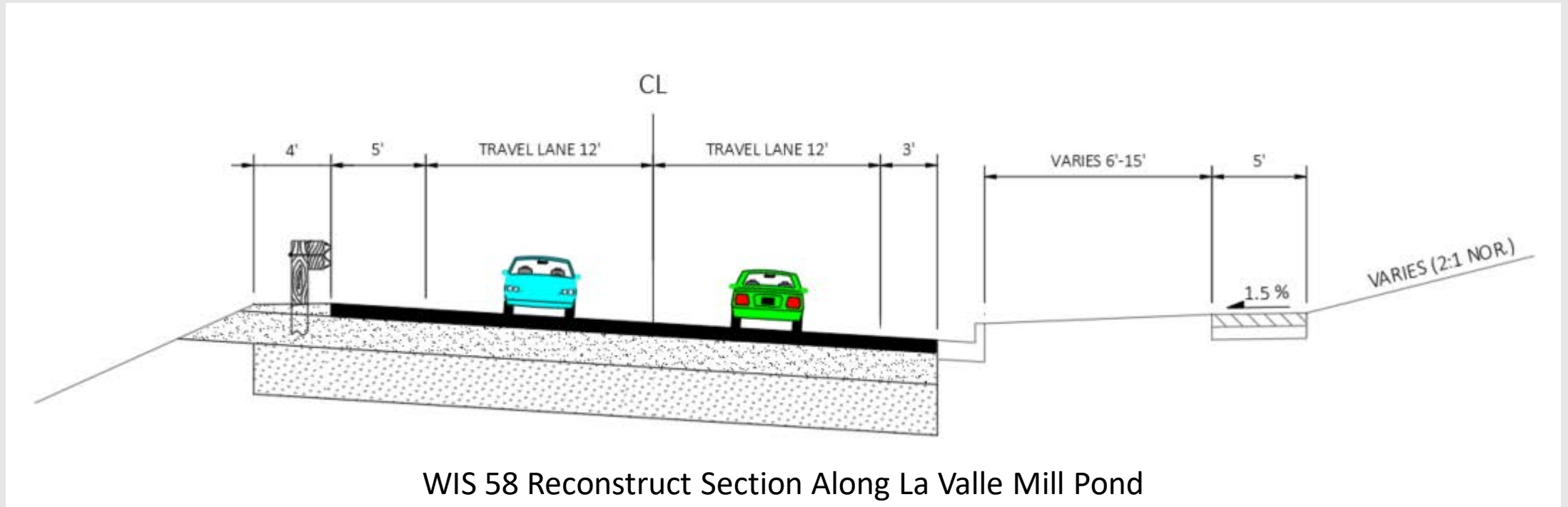
## Typical Section – WIS 58





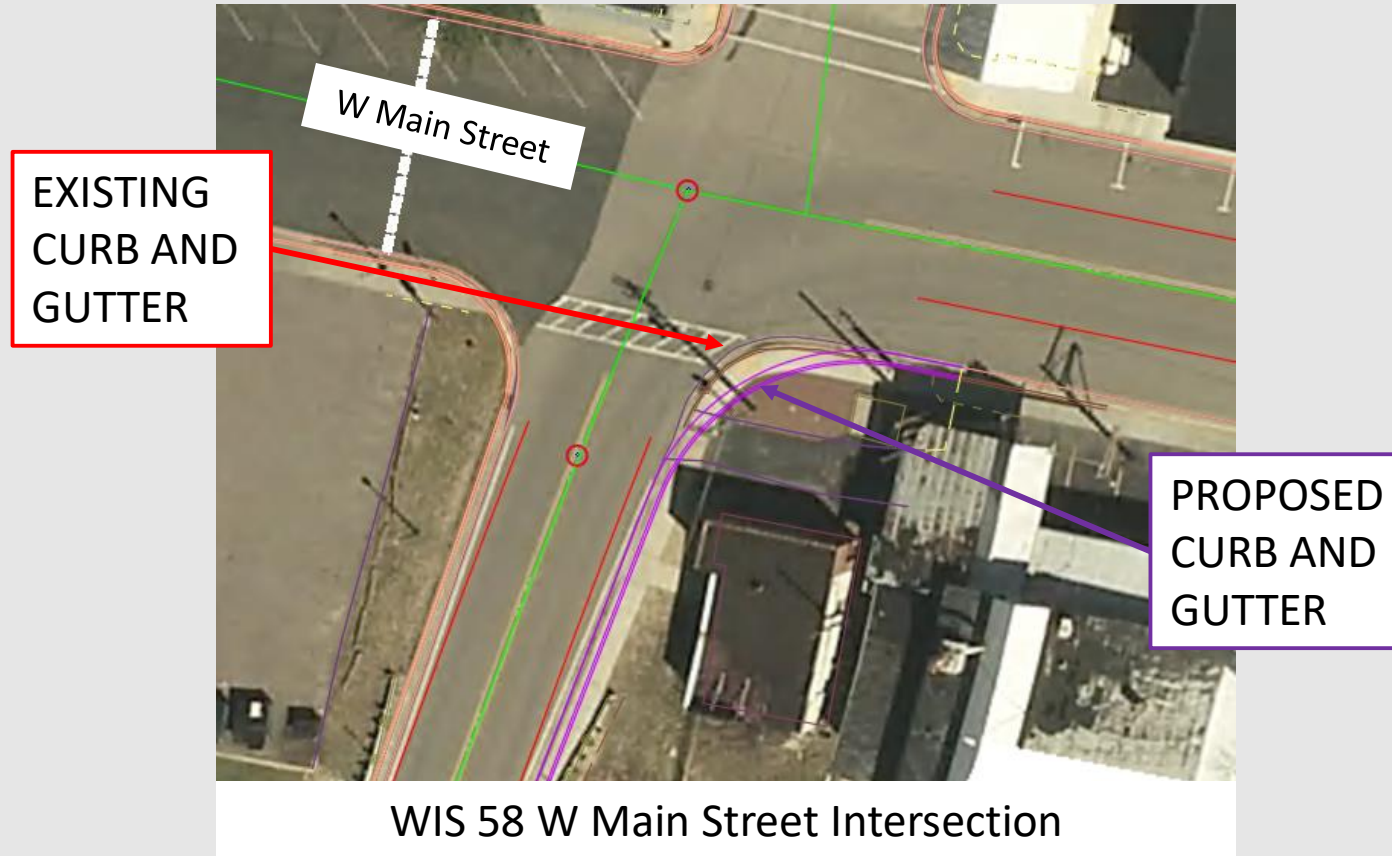
# Design Overview

## Reconstruct Typical Section – WIS 58



# Design Overview

## Widened Turning Radius



# Design Overview

---

## Drainage

- Replace 2 culvert pipes
  - Add apron end walls

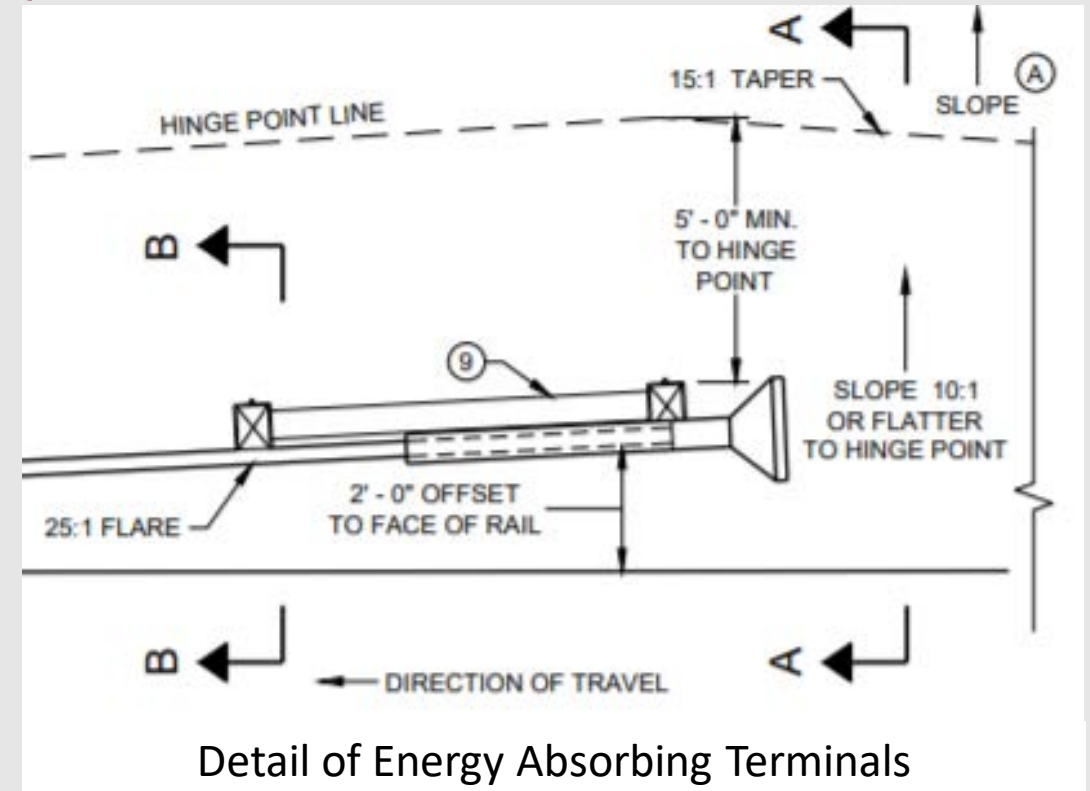


36-inch culvert pipe 0.35 miles north of Richland-Sauk Co Line

# Design Overview

## Guardrail Updates

- Lengthen guardrail as needed to shield roadside hazards
  - Add Energy Absorbing Terminals

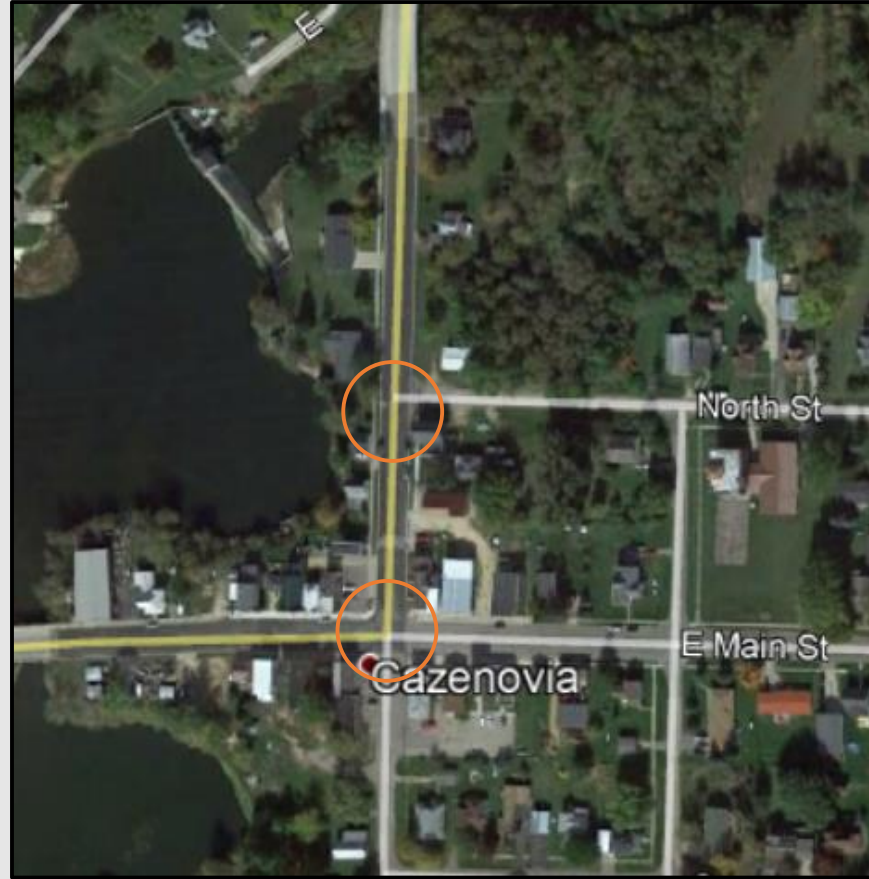




# Design Overview

## Curb Ramps - Cazenovia

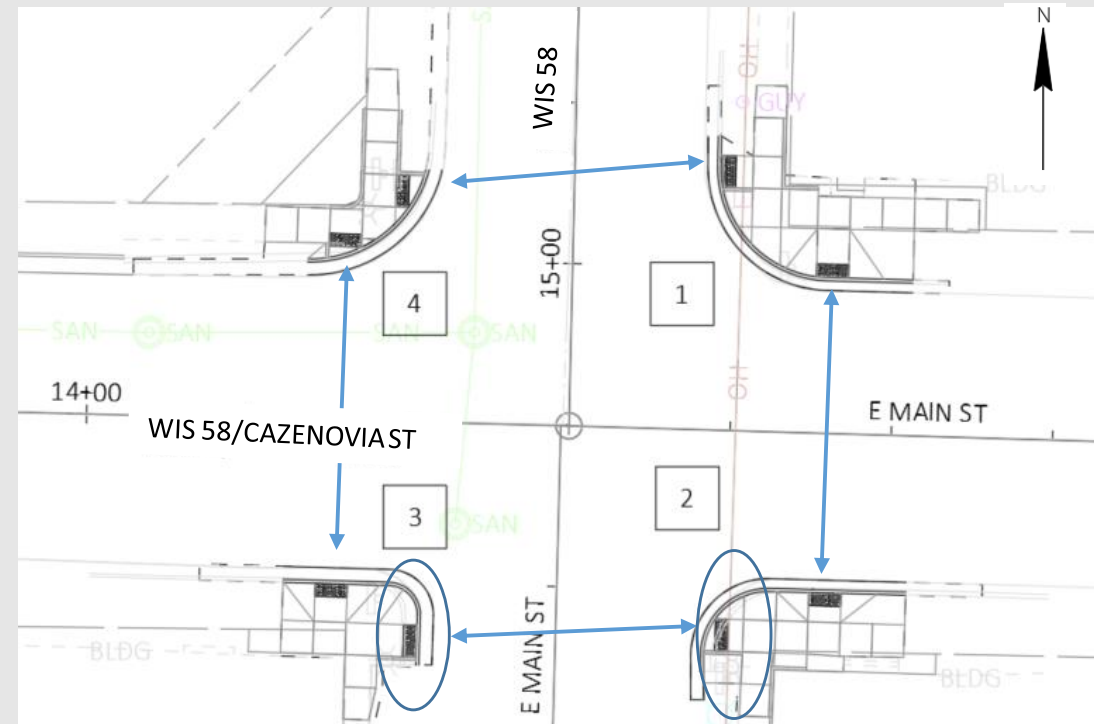
- Locations
  - Cazenovia St
  - North St



# Design Overview

## Curb Ramps – Cazenovia Street

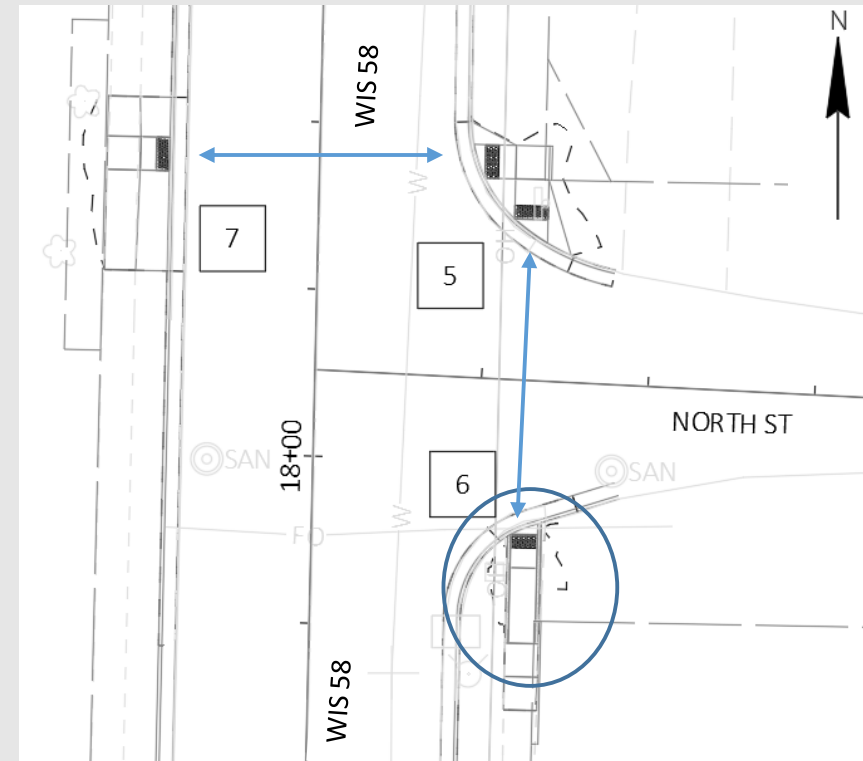
- Update curb ramps at Cazenovia Street
  - Adding N-S crossings
  - Bumping out C&G in SE and SW quadrants to create compliant ramps
  - Add detectable warning fields



# Design Overview

## Curb Ramps – North Street

- Update curb ramps at North Street
  - Creating curb cut at SE quadrant
  - Adding receiving ramp in NE quadrant
  - Adding NE to NW crossing
  - Add detectable warning fields



# Design Overview

## Curb Ramps - Ironton

- Locations

- 5<sup>th</sup> Street
- 4<sup>th</sup> Street
- 3<sup>rd</sup> Street
- 2<sup>nd</sup> Street
- 1<sup>st</sup> Street
- Main Street
- State Lane

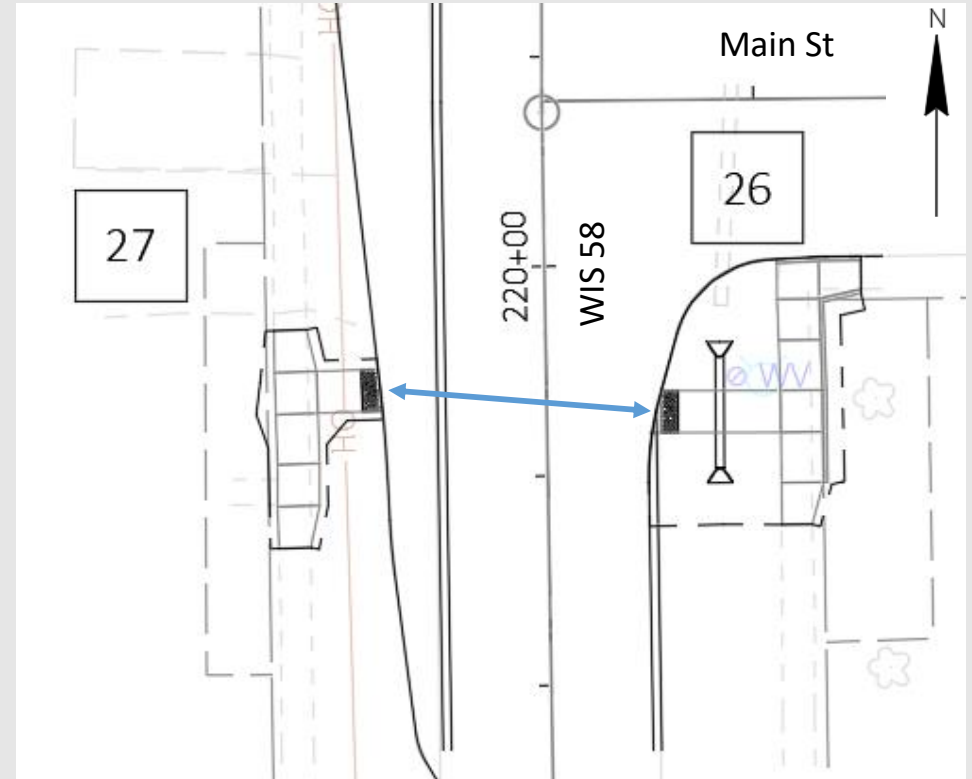




# Design Overview

## Curb Ramps – Main Street

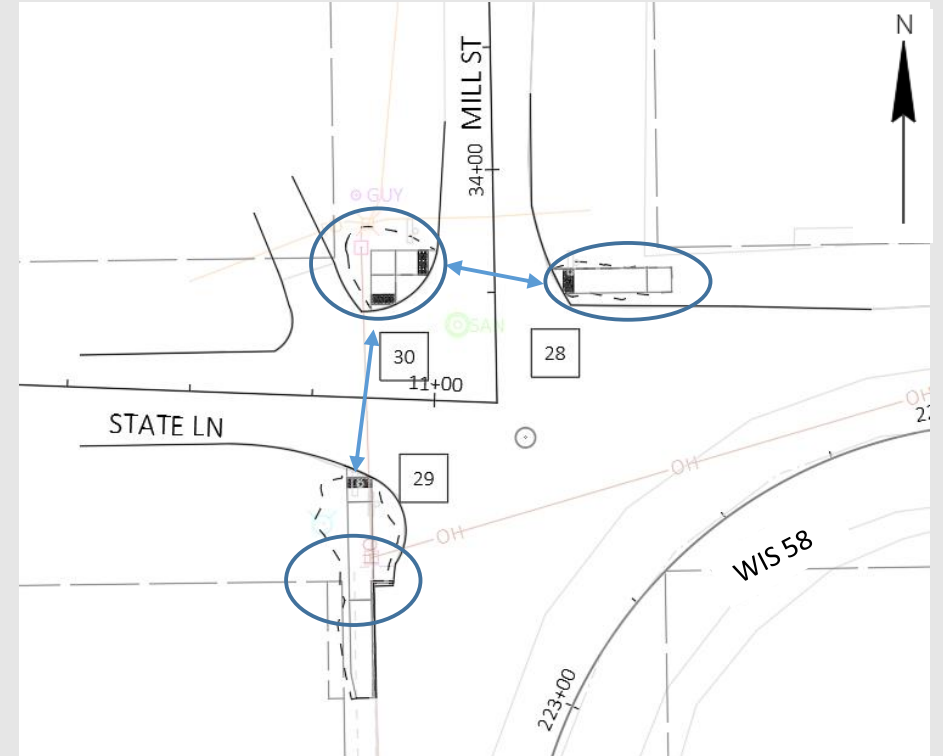
- Update curb ramp at Main Street
  - Add crossing across WIS 58
  - Add detectable warning fields



# Design Overview

## Curb Ramps – State Lane

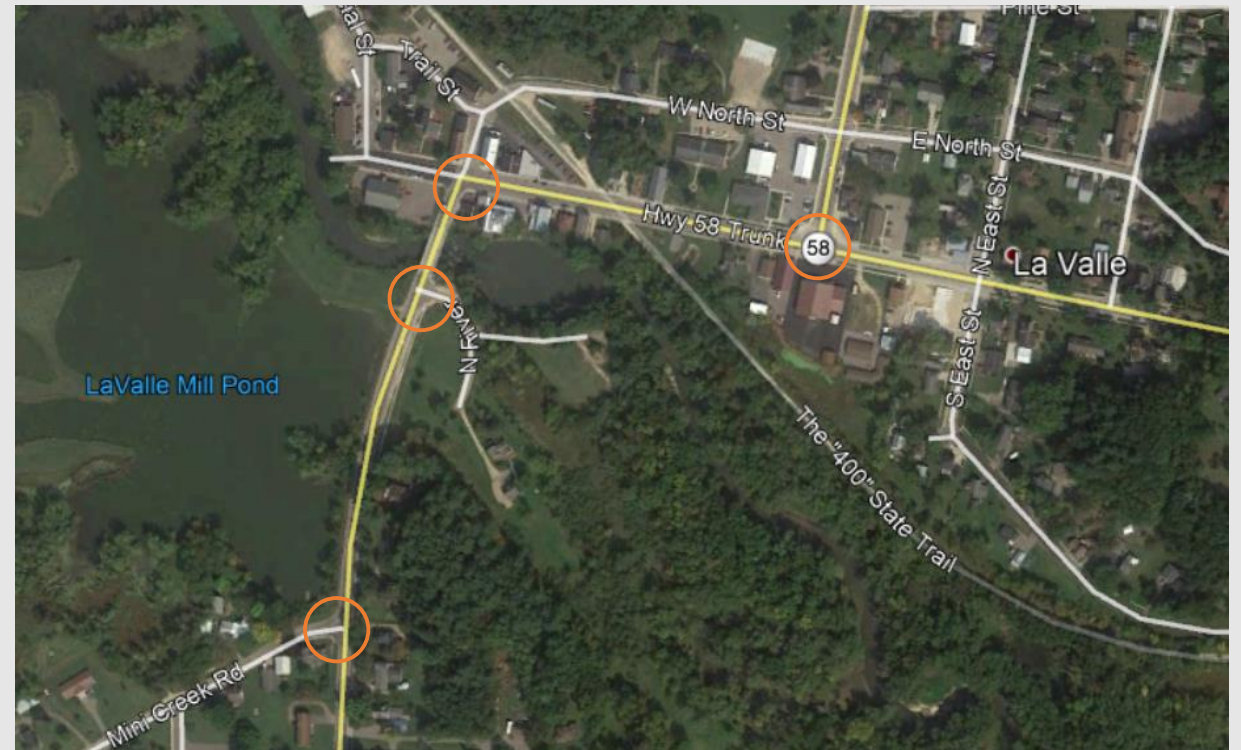
- Update curb ramp at State Lane
  - Add crossing to Cowboy Bar
  - Add detectable warning fields



# Design Overview

## Curb Ramps – La Valle

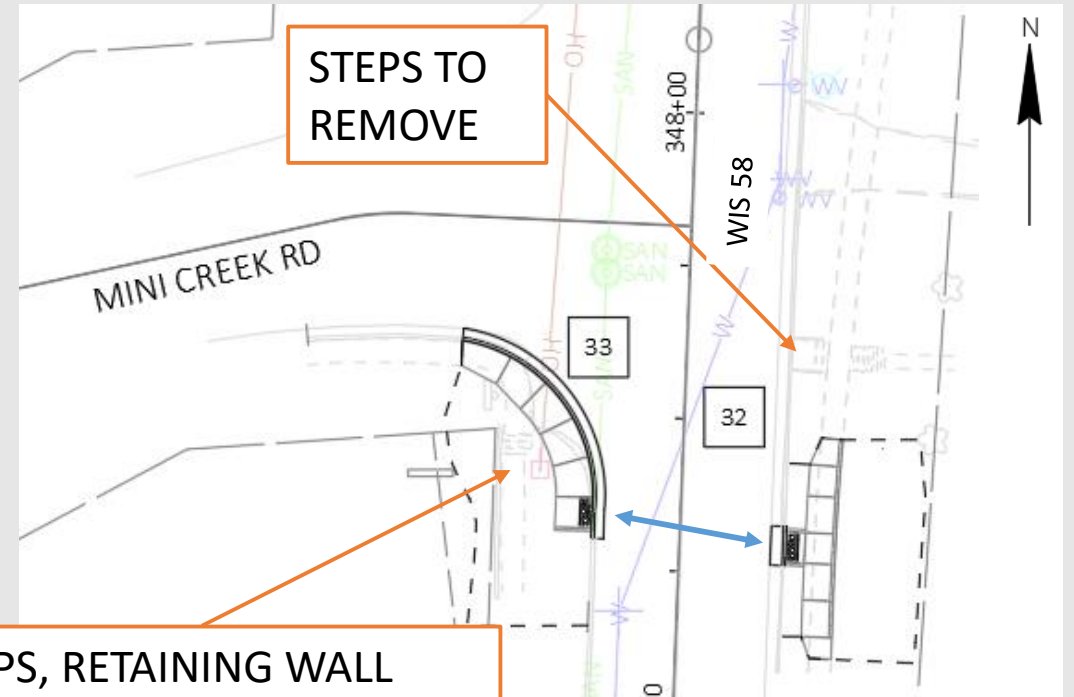
- Locations
  - Mini Creek Road
  - N River
  - W Main Street/W North Street
  - WIS 33



# Design Overview

## Curb Ramps – Mini Creek Road

- Update curb ramp at Mini Creek Rd
  - Add E-W crossing across WIS 58
  - Remove steps on the SE quadrant
  - Add detectable warning fields

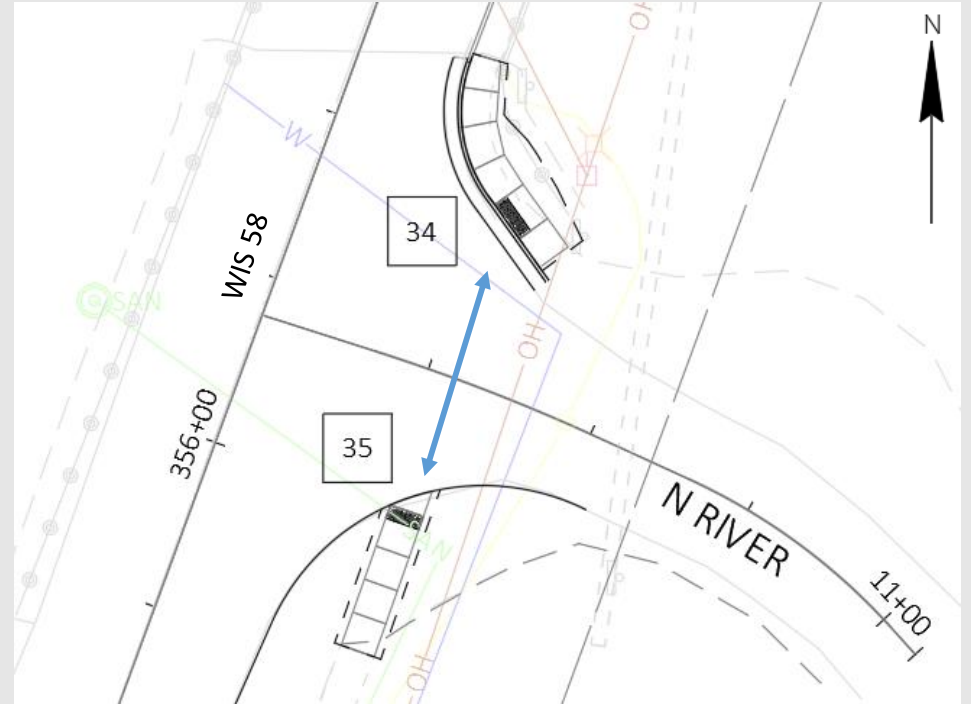




# Design Overview

## Curb Ramps – N River

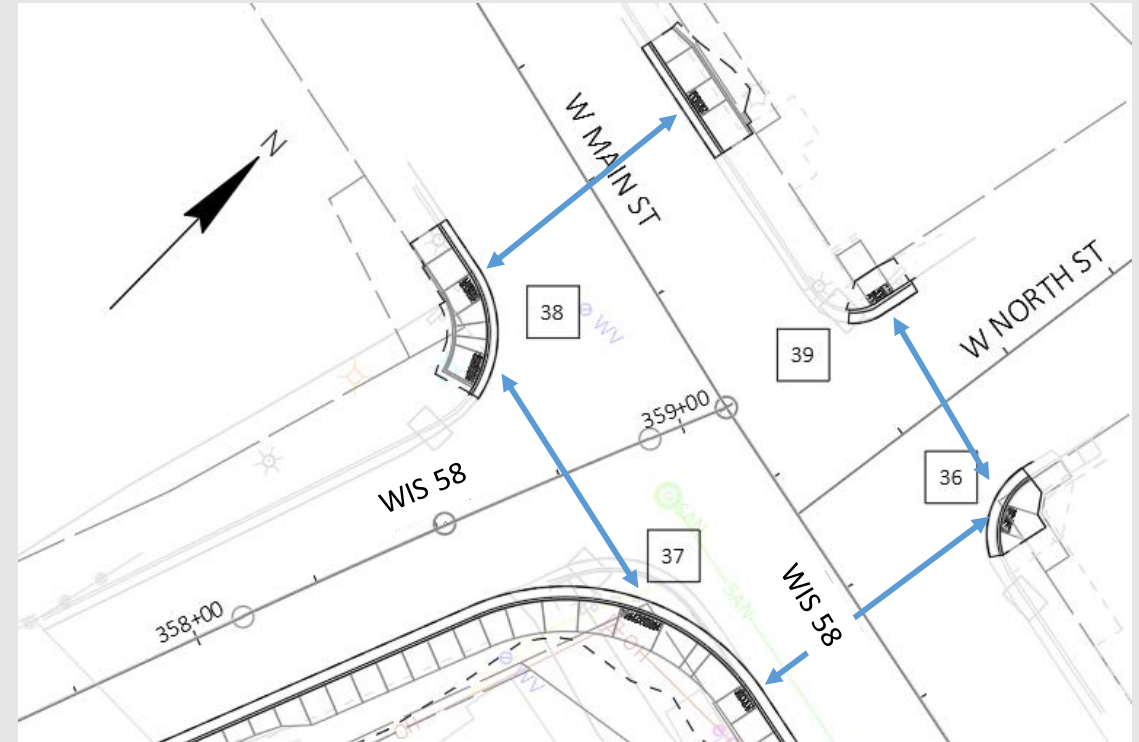
- Replace washed-out sidewalk
- Add detectable warning fields



# Design Overview

## Curb Ramps – W Main Street/W North St

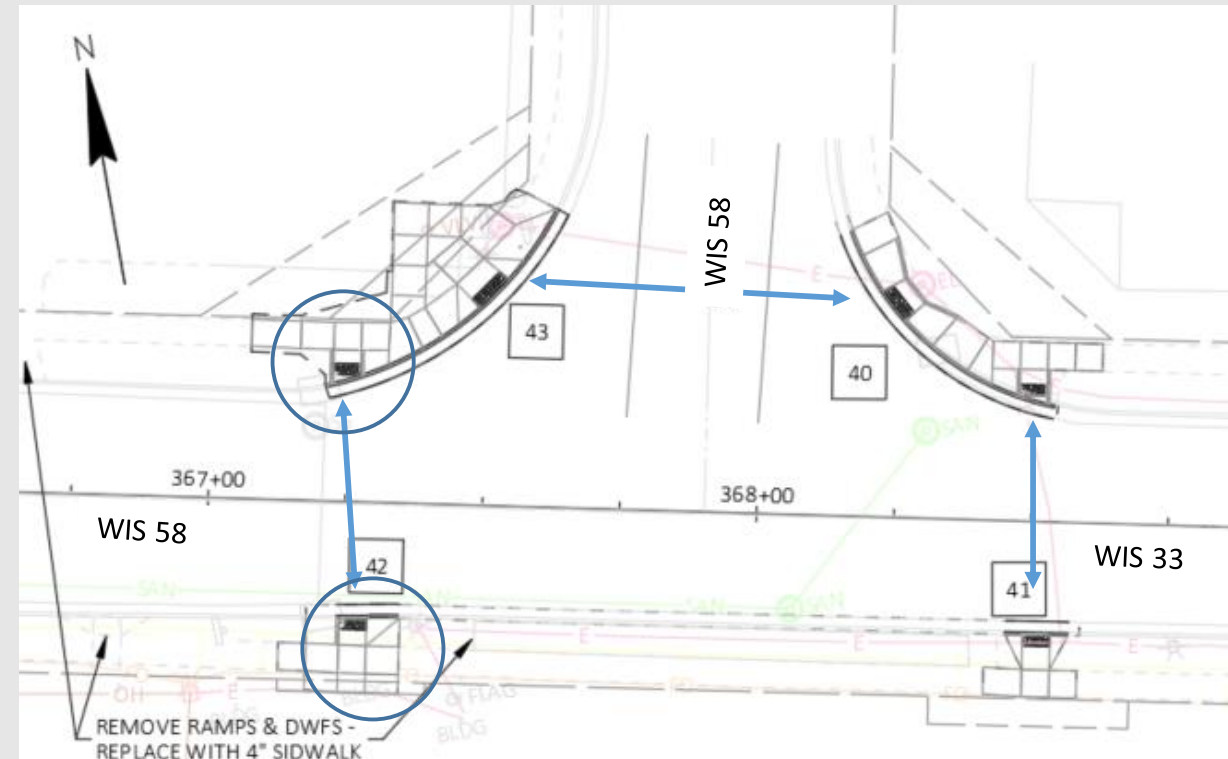
- Update curb ramps at W Main Street and W North Street
  - Add N-S crossing across WIS 58 and W Main Street
  - Add detectable warning fields



# Design Overview

## Curb Ramps – WIS 33

- Update curb ramps at WIS 33 intersection
  - Add N-S crossing across WIS 58 and WIS 33
  - Shift N-S crossing away from fire department driveway
  - Reconfigure patio area
  - Add detectable warning fields



# General Project Information

---

## Hazardous Mailboxes

- Hazardous Mailboxes: Ornamental or heavy mailboxes pose as a roadside hazard and should be replaced with standard posts.
  - Ornamental mailboxes are not crash tested and may cause serious damage to the passenger and the vehicle
  - Standard posts are crash tested and will break on impact so the mailbox will deal less damage to the vehicle and passenger.





# WIS 58 Traffic during Construction

---

- The highway will be controlled with flagging operations and reducing traffic to one lane
- Intersections with curb ramp construction will be closed for 2-3 days
  - Pedestrians detours will be provided



# Recent Activities

---

- Sent Initial Coordination Letters to the public
- Held 30% Plan Review
- Environmental Hazardous Material Report received
- Begun drafting Environmental Report
- Held Local Officials Meeting on December 7<sup>th</sup>



# Project Schedule

---

- Public Involvement Meeting December 2020/January 2021
- Environment Document March/April 2021
- 60% Preliminary Plans April/May 2021
- Design Study Report May/June 2021
- Real Estate Plat & Start of Acquisitions August 2021
- Real Estate Acquisitions Complete August 2023
- 90% Plans May 2023
- Plan Submittal August 2023
- Project Letting November 2023
- Construction Summer 2024



# Contact Information

---

- Thank you for viewing this public involvement presentation.
- If you have any questions, comments, or concerns about this project feel free to send as an email, give us a call, or send us mail at 2101 Wright St, Madison, WI 53704:

Karla Knorr, PE

608-246-7965

[Karla.Knorr@dot.wi.gov](mailto:Karla.Knorr@dot.wi.gov)

David Schmidt, PE

608-246-3867

[David2.Schmidt@dot.wi.gov](mailto:David2.Schmidt@dot.wi.gov)

Anthony Johnson

608-246-3884

[anthonyr.johnson@dot.wi.gov](mailto:anthonyr.johnson@dot.wi.gov)

