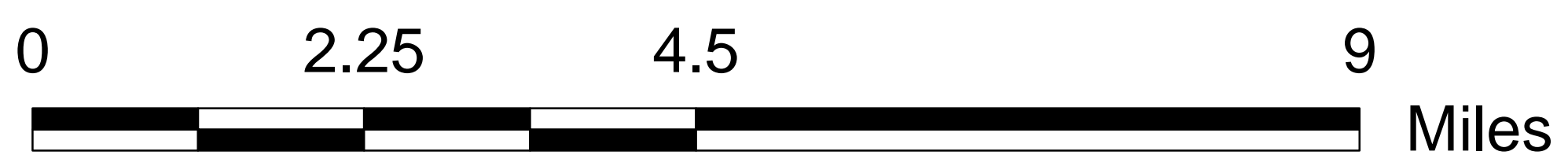
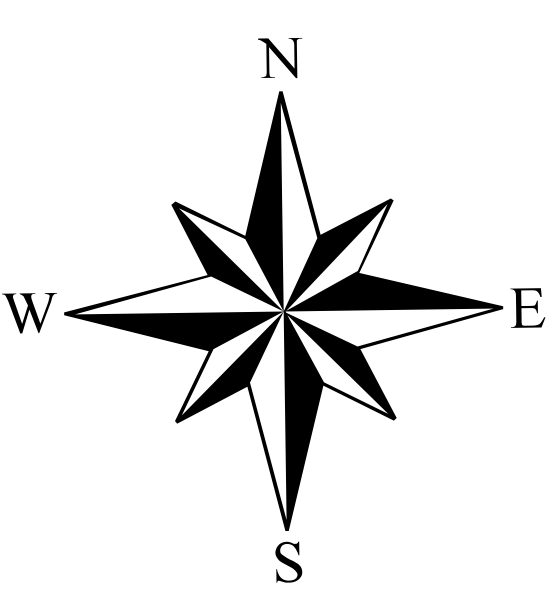
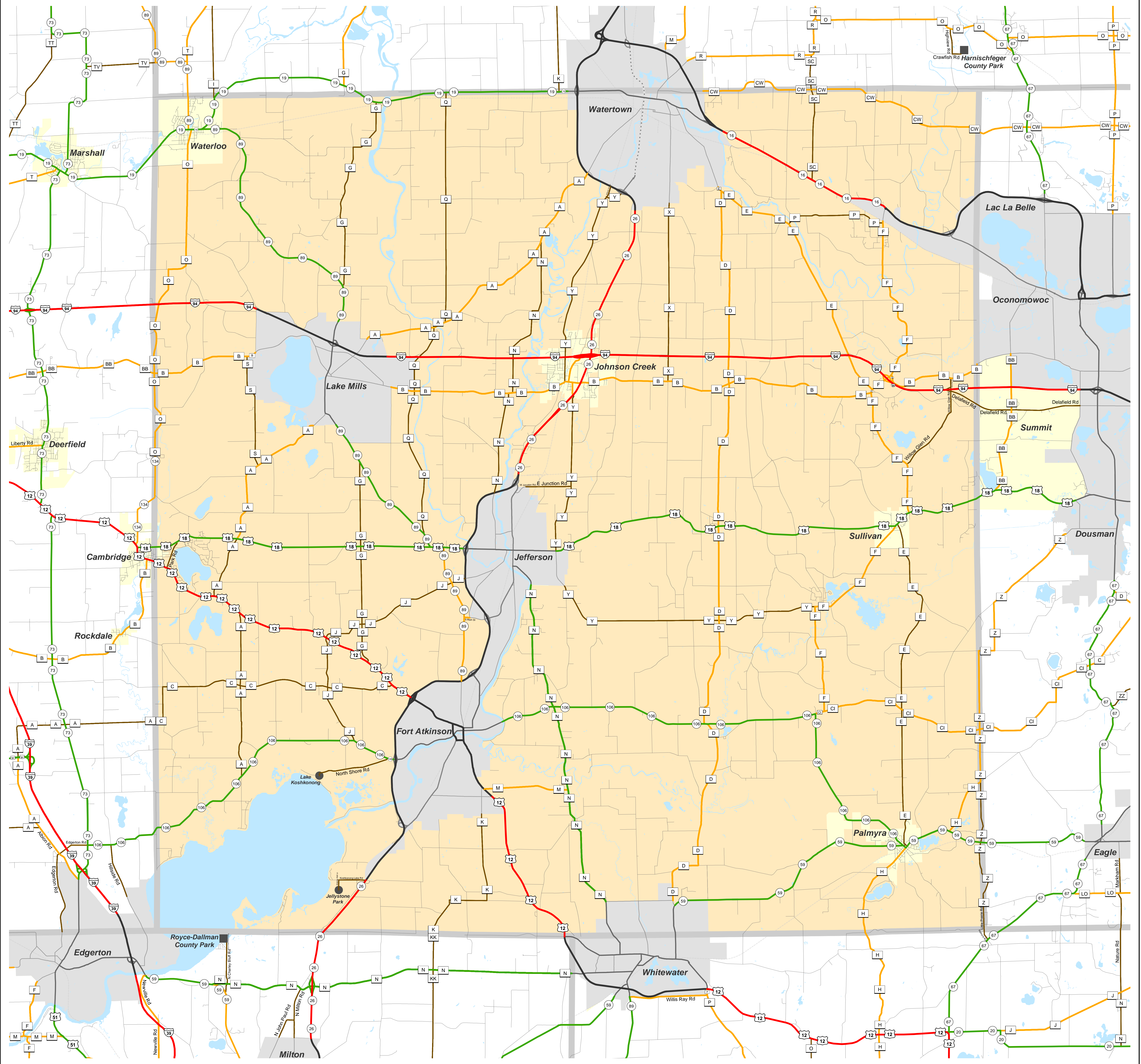


JEFFERSON

Functional Classification - February 8, 2016

JEFFERSON



Legend

Existing	Planned*	Other

* NOTE: In urban (zoned) areas, only urban connecting links of rural classified routes and urban non-connecting link principal arterials are shown.

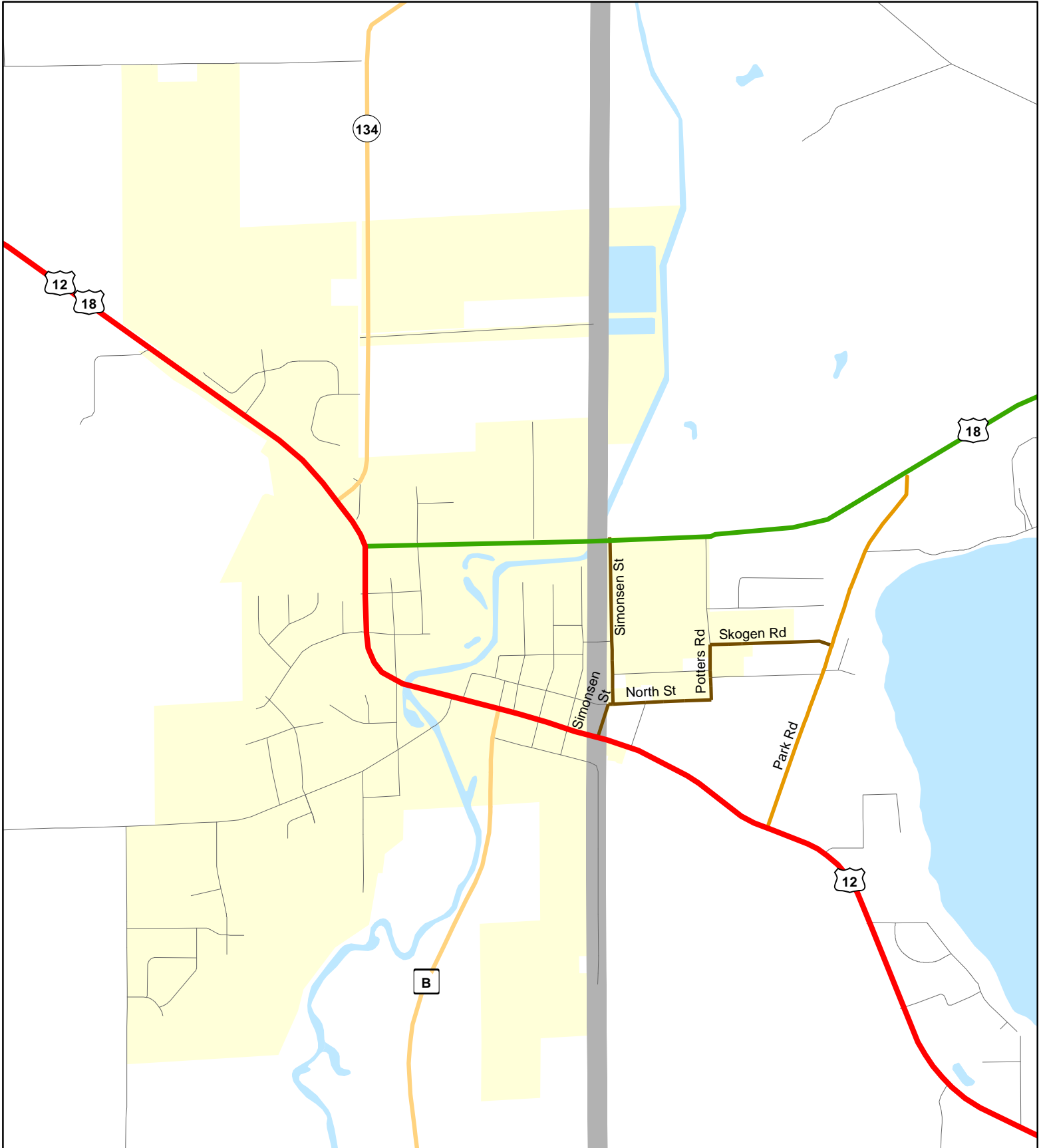
The information on these maps and produced from these maps was created for the official use of the Wisconsin Department of Transportation (WisDOT). Any other use, while not prohibited, is the sole responsibility of the user. WisDOT expressly disclaims all liability regarding fitness of use of the information for other than official WisDOT business.



Chart C Community: CAMBRIDGE County: Jefferson

Functional Classification

02/08/2016



Functional Classification

- Principal Arterial
- Minor Arterial
- Major Collector
- Minor Collector
- Chart C Minor Collector
- - planned Principal Arterial
- - planned Minor Arterial
- - planned Major Collector
- - planned Minor Collector

WisDOT Bureau of Planning and Economic Development
FHWA approval: 02/08/2016
PDF created: 01/28/2016

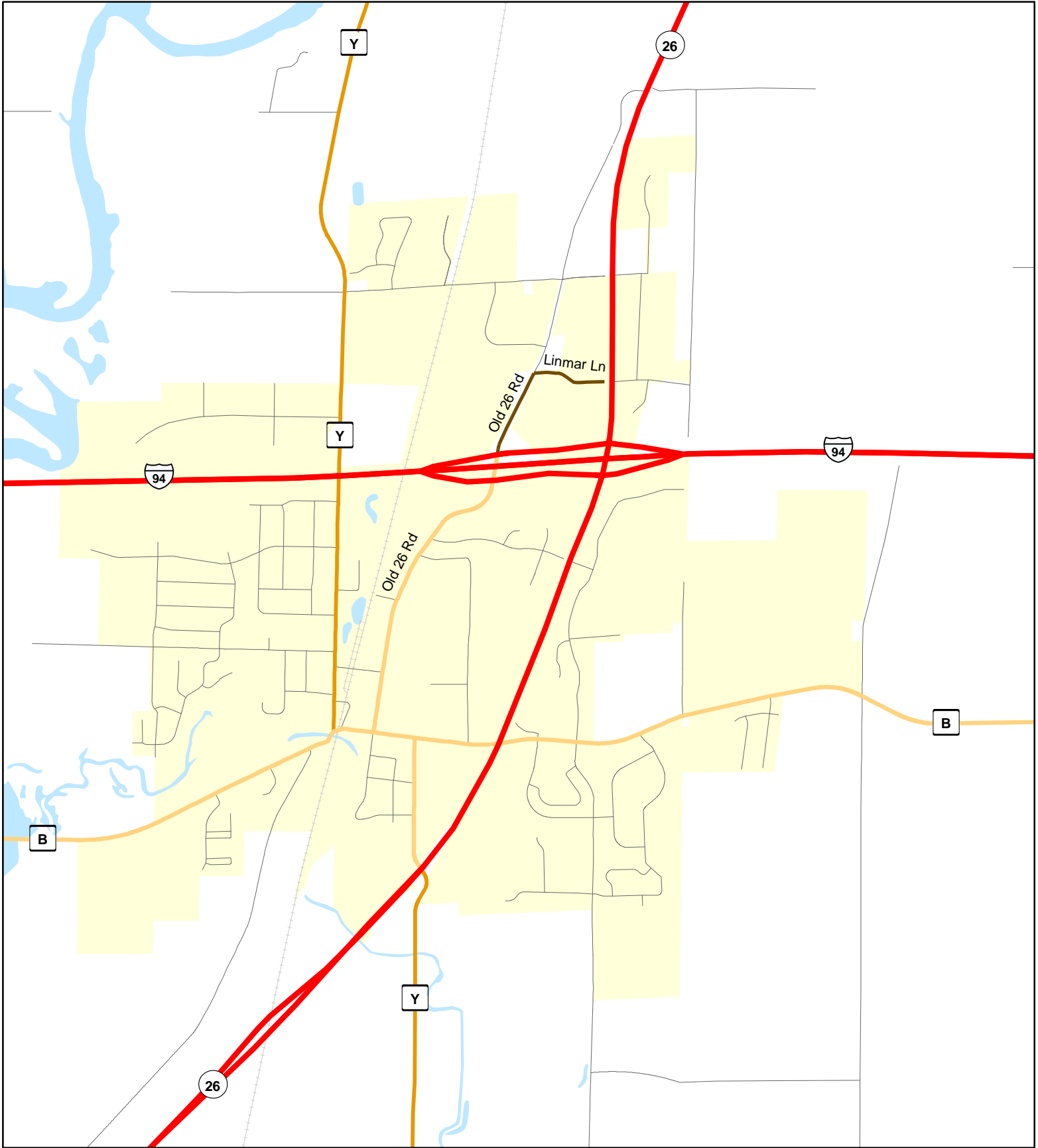
Chart C Community: CAMBRIDGE County: Jefferson



Chart C Community: JOHNSON CREEK County: Jefferson

Functional Classification

02/08/2016



Functional Classification

- Principal Arterial
- Major Collector
- Minor Collector
- Chart C Minor Collector
- planned Principal Arterial
- planned Minor Arterial
- planned Major Collector
- planned Minor Collector

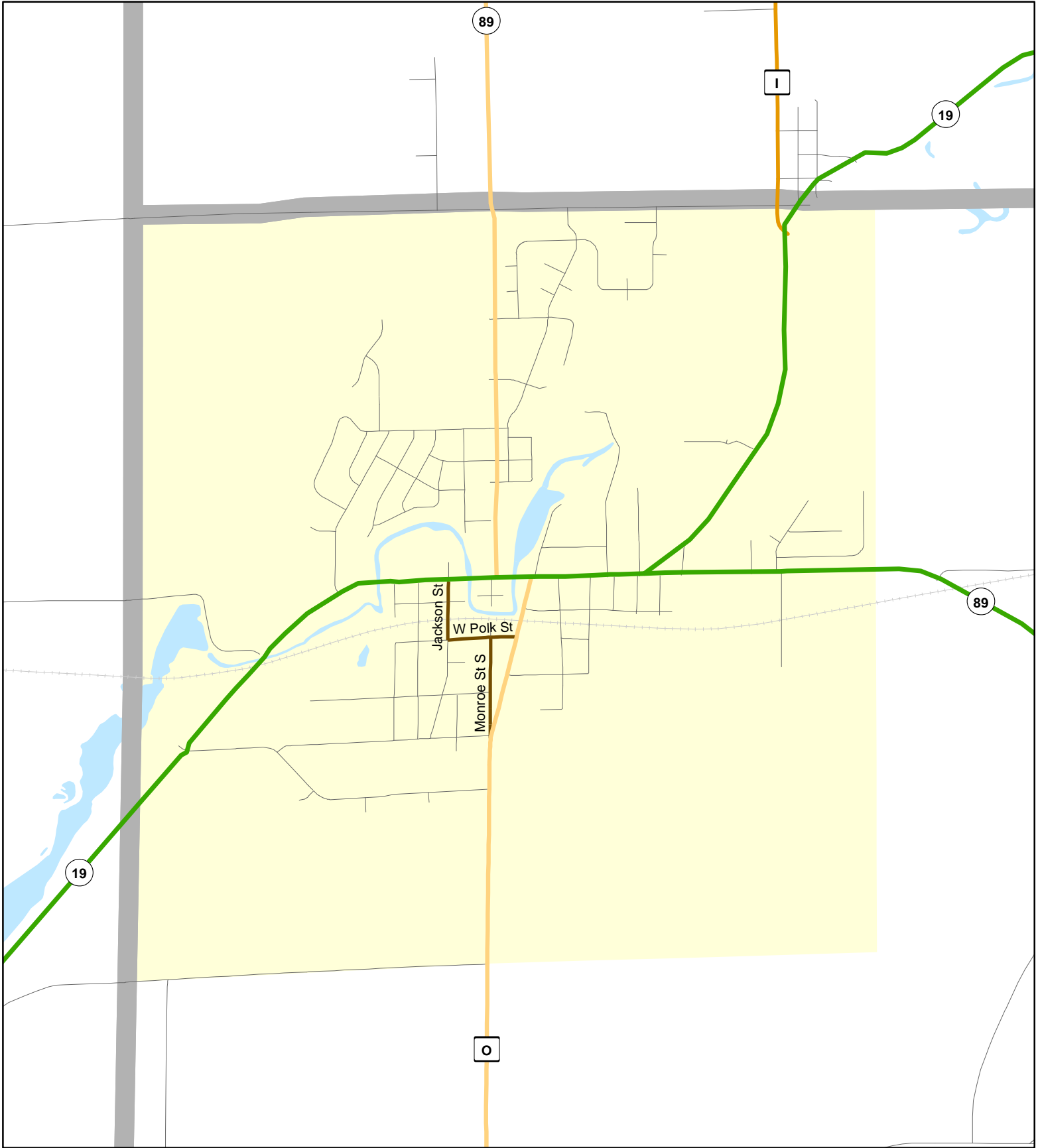
WisDOT Bureau of Planning and Economic Development
FHWA approval: 02/08/2016
PDF created: 01/28/2016

Chart C Community: JOHNSON CREEK County: Jefferson



Chart C Community: WATERLOO
County: Jefferson

Functional Classification 02/08/2016



Functional Classification

- | | | | | |
|----------------------------|------------------------|-------------------------|-------------------------|-------------------------|
| Principal Arterial | Minor Arterial | Major Collector | Minor Collector | Chart C Minor Collector |
| planned Principal Arterial | planned Minor Arterial | planned Major Collector | planned Minor Collector | |

WisDOT Bureau of Planning and Economic Development
FHWA approval: 02/08/2016
PDF created: 01/28/2016

Chart C Community: WATERLOO
County: Jefferson