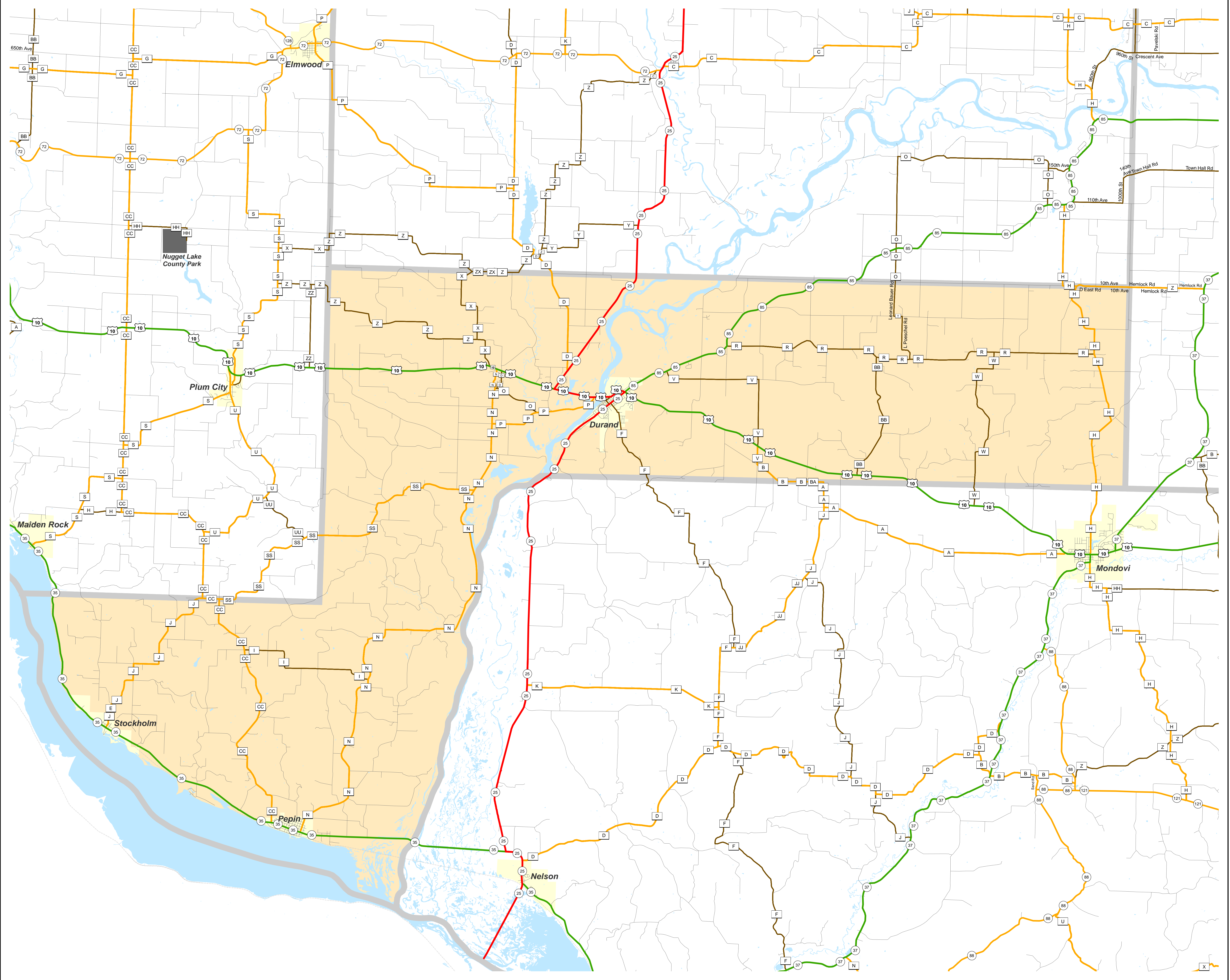


PEPIN

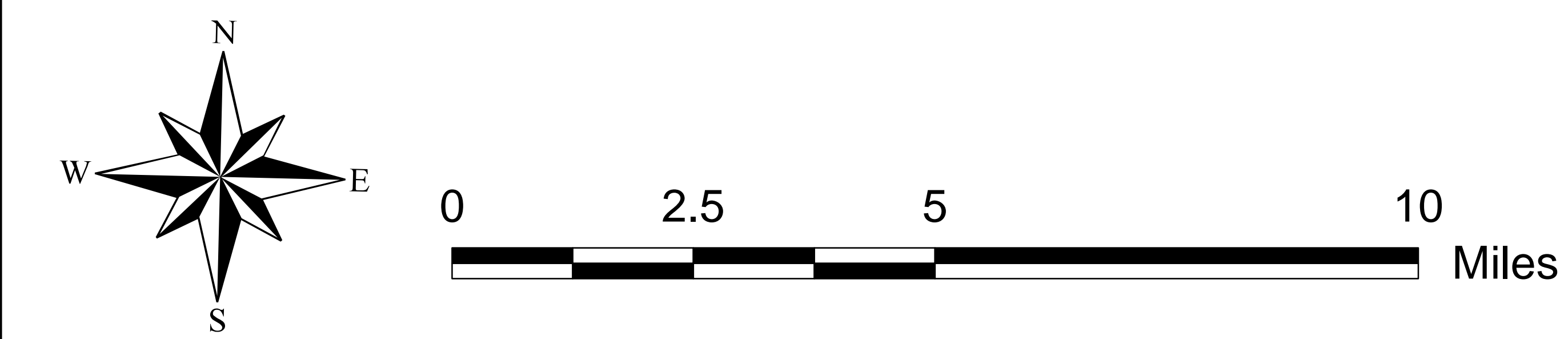
Functional Classification 08/11/2016

PEPIN



Legend	
Existing	Planned*
— Principal Arterial	- - - - - Principal Arterial
— Minor Arterial	- - - - - Minor Arterial
— Major Collector	- - - - - Major Collector
— Minor Collector	- - - - - Minor Collector
- - - - - Minor Collector classified using small community criteria and Local	
— Railroads	
— Lakes, Rivers, Streams	
 City/Village Boundary	
 Urban(ized) Area	

* NOTE: In urban(ized) areas, only urban connecting links of rural classified routes and urban non-connecting link principal arterials are shown. All planned route locations are approximations only.



PEPIN

Chart “C” Communities

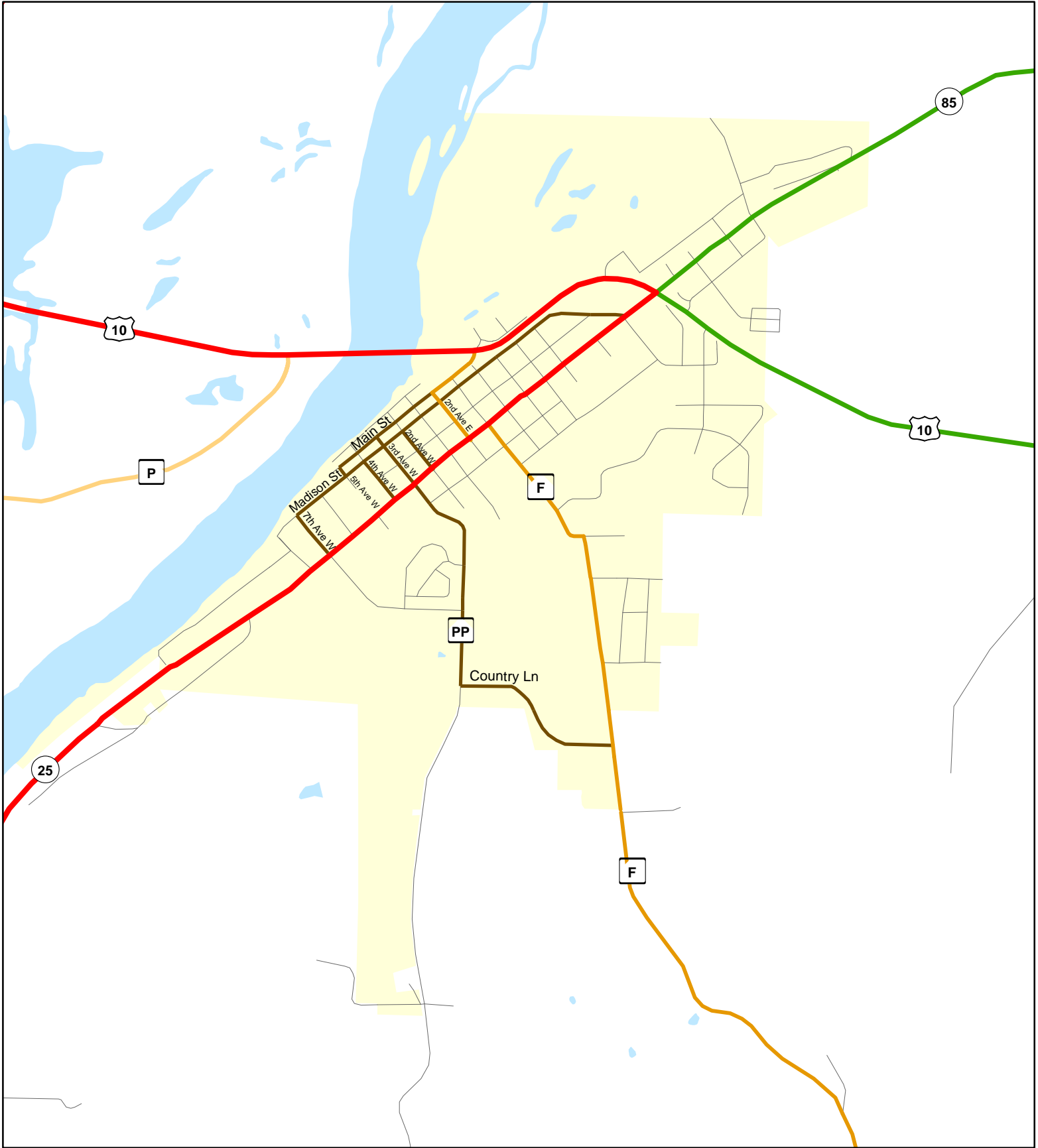
Page

- 3 Durand
- 4 Pepin



Chart C Community: DURAND
County: Pepin

Functional Classification **08/11/2016**



Functional Classification

- Principal Arterial — Minor Arterial — Major Collector — Minor Collector — Chart C Minor Collector
- planned Principal Arterial — planned Minor Arterial — planned Major Collector — planned Minor Collector

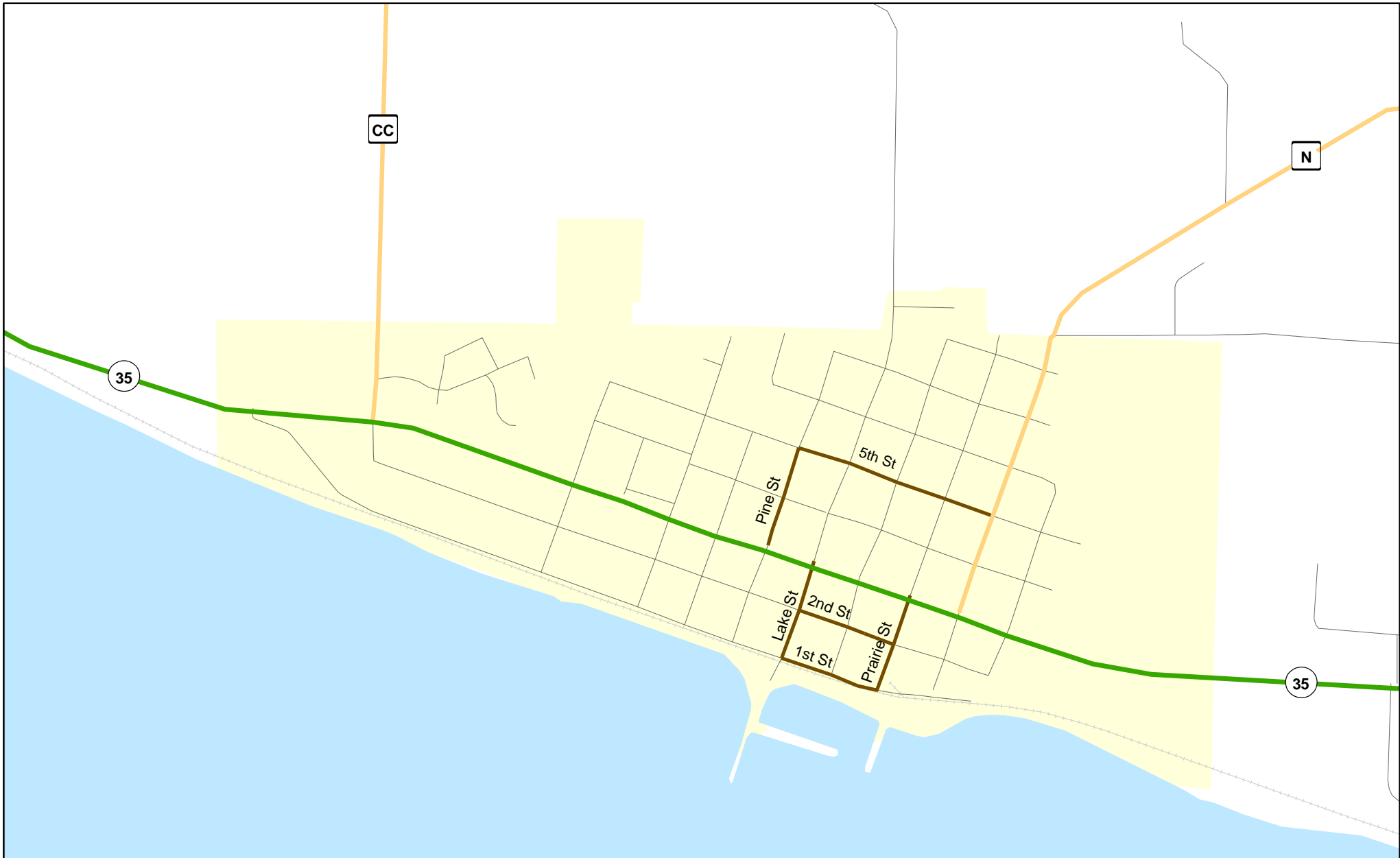
WisDOT Bureau of Planning and Economic Development
FHWA approval: 08/11/2016
PDF created: 12/22/2015

Chart C Community: DURAND
County: Pepin



Chart C Community: PEPIN County: Pepin

Functional Classification 08/11/2016



Functional Classification

- Principal Arterial
- Minor Arterial
- Major Collector
- Minor Collector
- Chart C Minor Collector
- planned Principal Arterial
- planned Minor Arterial
- planned Major Collector
- planned Minor Collector

WisDOT Bureau of Planning and Economic Development
FHWA approval: 08/11/2016
PDF created: 12/22/2015

Chart C Community: PEPIN
County: Pepin