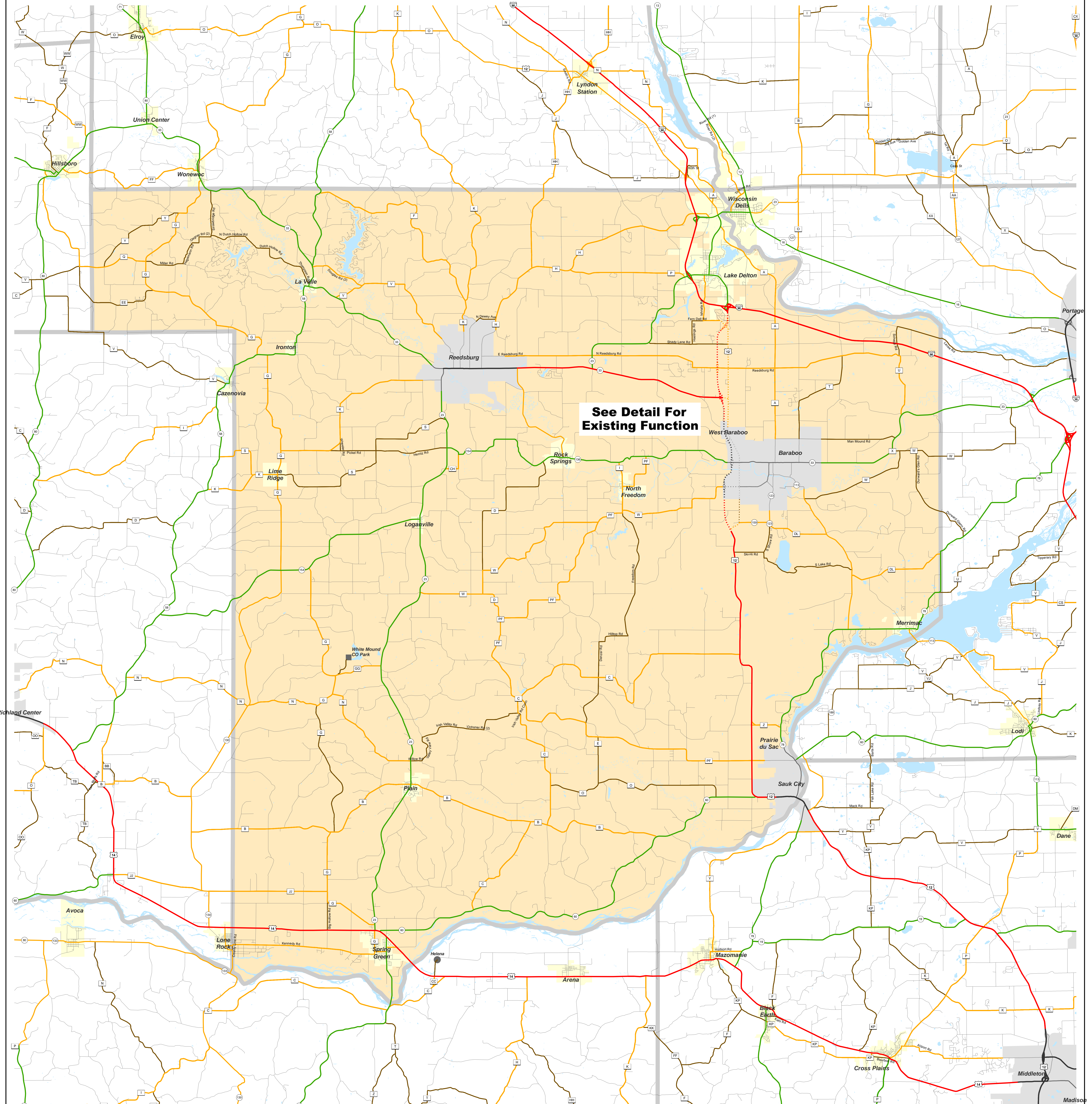


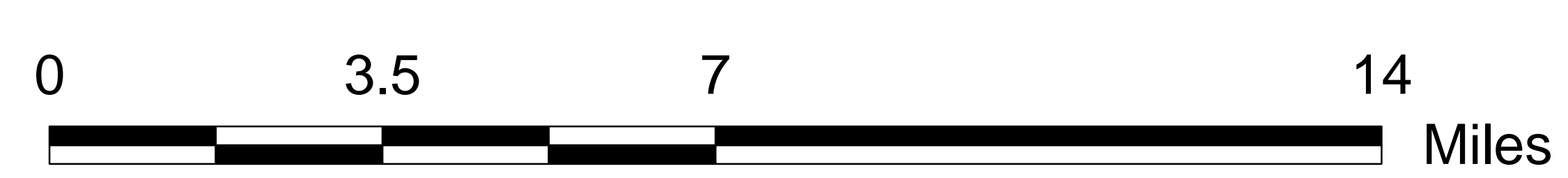
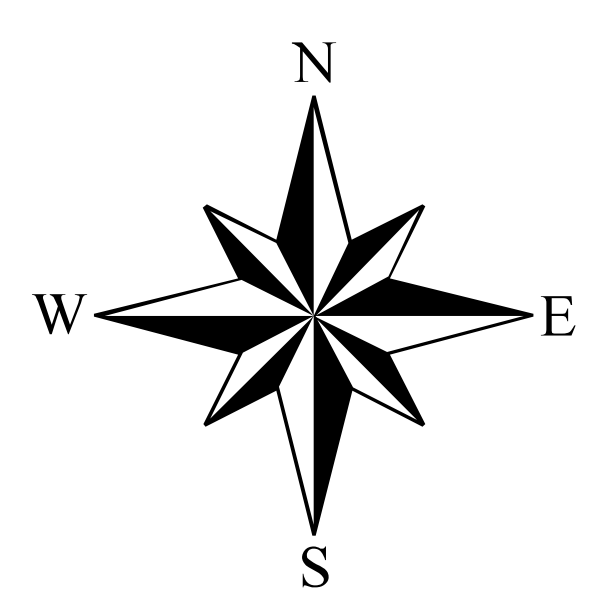
SAUK

Functional Classification 03/30/2012

SAUK



See Detail For Existing Function



| Existing Planned | | Other | |
|------------------|---|-------|------------------------|
| | Principal Arterial | | Railroads |
| | Minor Arterial | | Lakes, Rivers, Streams |
| | Major Collector | | City or Village Limits |
| | Minor Collector | | Urbanized Area |
| | Minor Collector classified using small community criteria and all Local | | |

(In urban areas, only connecting links of rural routes are shown.)

The information on these maps and produced from these maps was created for the official use of the Wisconsin Department of Transportation (WisDOT). Any other use, while not prohibited, is the sole responsibility of the user. WisDOT expressly disclaims all liability regarding fitness of use of the information for other than official WisDOT business.

SAUK

Chart “C” Communities

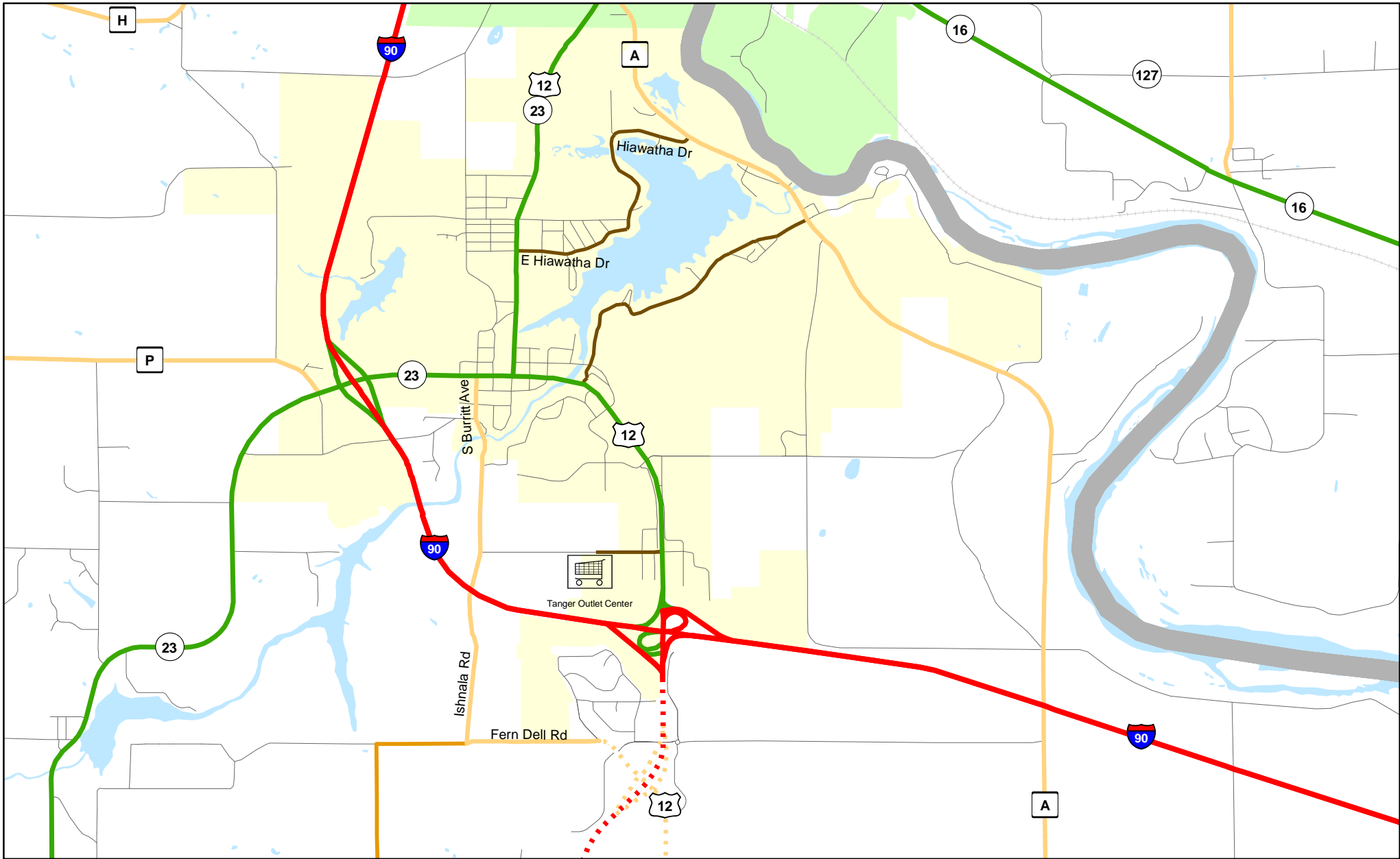
Page

- 3 Lake Delton
- 4 Spring Green



Chart C Community: LAKE DELTON County: Sauk

Functional Classification 03/30/2012



Functional Classification

- Principal Arterial (Red solid line)
- Minor Arterial (Green solid line)
- Major Collector (Orange solid line)
- Minor Collector (Yellow solid line)
- Chart C Minor Collector (Brown solid line)
- planned Principal Arterial (Red dashed line)
- planned Minor Arterial (Green dashed line)
- planned Major Collector (Orange dashed line)
- planned Minor Collector (Yellow dashed line)

WisDOT Bureau of Planning and Economic Development
FHWA approval: 03/30/2012
PDF created: 01/25/2012

**Chart C Community: LAKE DELTON
County: Sauk**

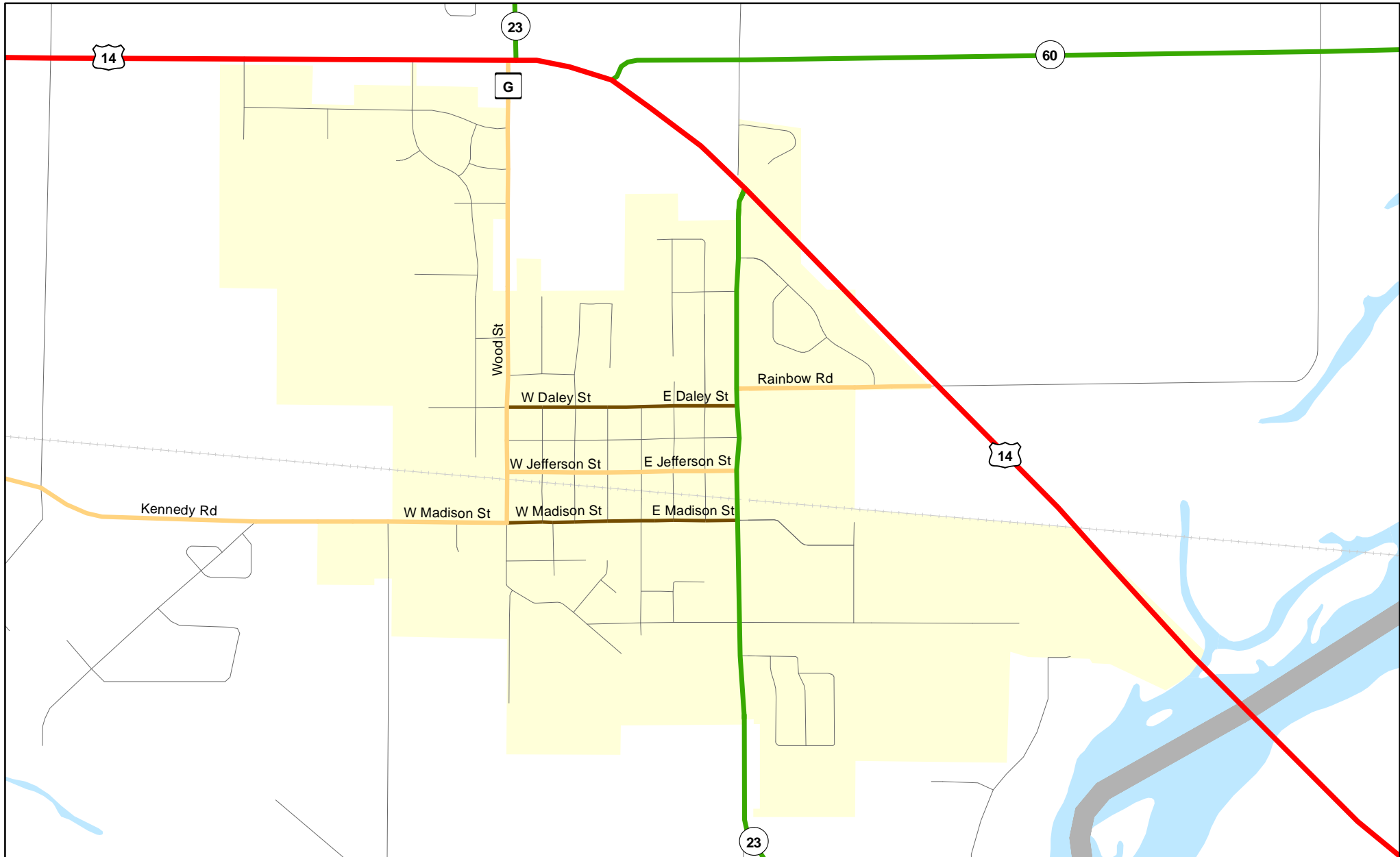


Chart C Community: SPRING GREEN

County: Sauk

Functional Classification

03/30/2012



Functional Classification

- Principal Arterial
- Minor Arterial
- Major Collector
- Minor Collector
- Chart C Minor Collector
- planned Principal Arterial
- planned Minor Arterial
- planned Major Collector
- planned Minor Collector

WisDOT Bureau of Planning and Economic Development
FHWA approval: 03/30/2012
PDF created: 01/25/2012

Chart C Community: SPRING GREEN
County: Sauk