

R-6-W

R-5-W

1,750,000'E

R-4-W

R-3-W

R-2-W

R-1-W

CRAWFORD CO.

RICHLAND CO.

RICHLAND CO.

IOWA CO.

T-8-N

T-7-N

T-6-N

T-5-N

T-4-N

T-3-N

T-2-N

T-1-N

Town of Belmont

Town of Elk Grove

Town of Belmont

Town of Belmont

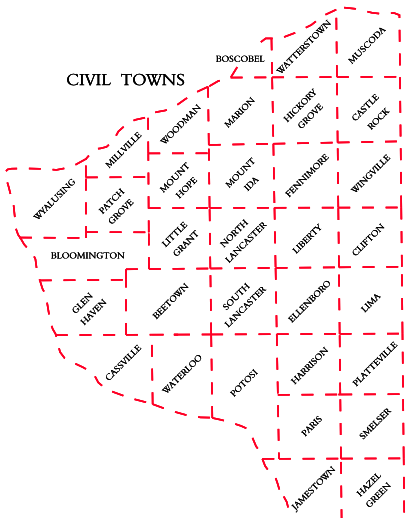
Town of Belmont

Town of Belmont

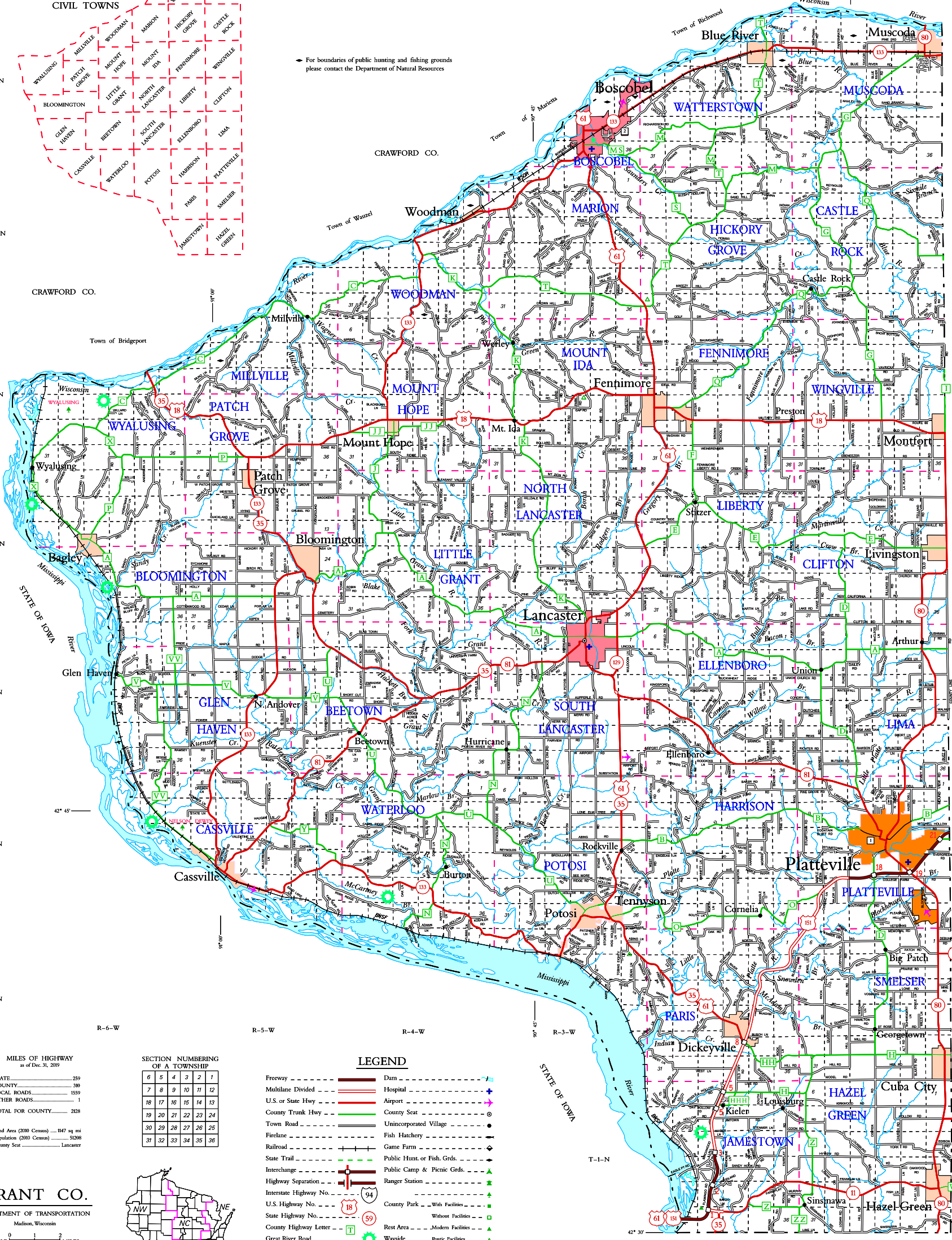
Town of Belmont

LAFAYETTE CO.

CIVIL TOWNS



For boundaries of public hunting and fishing grounds please contact the Department of Natural Resources



MILES OF HIGHWAY as of Dec. 31, 2019

STATE	259
COUNTY	380
LOCAL ROADS	1539
OTHER ROADS	1
TOTAL FOR COUNTY	2128

SECTION NUMBERING OF A TOWNSHIP

6	5	4	3	2	1
7	8	9	10	11	12
13	14	15	16	17	18
19	20	21	22	23	24
25	26	27	28	29	30
31	32	33	34	35	36

LEGEND

- Freeway
- Multilane Divided
- U.S. or State Hwy
- County Trunk Hwy
- Town Road
- Firelane
- Railroad
- State Trail
- Interchange
- Highway Separation
- Interstate Highway No.
- U.S. Highway No.
- State Highway No.
- County Highway Letter
- Great River Road
- State Boundary
- County Boundary
- Civil Town Boundary
- Section Line
- Dam
- Hospital
- Airport
- County Seat
- Unincorporated Village
- Fish Hatchery
- Game Farm
- Public Hunt or Fish Grds.
- Public Camp & Picnic Grds.
- Ranger Station
- County Park - With Facilities
- Without Facilities
- Rest Area - Modern Facilities
- Wayside - Basic Facilities
- University of Wis. - Platteville
- Wisconsin Secure Program Facility

GRANT CO. DEPARTMENT OF TRANSPORTATION

Madison, Wisconsin
 SCALE 0 1 2 MILES
 Corrected for JAN. 2021
 Base compiled from U.S.G.S. Quadrangles 1:100,000 Series

