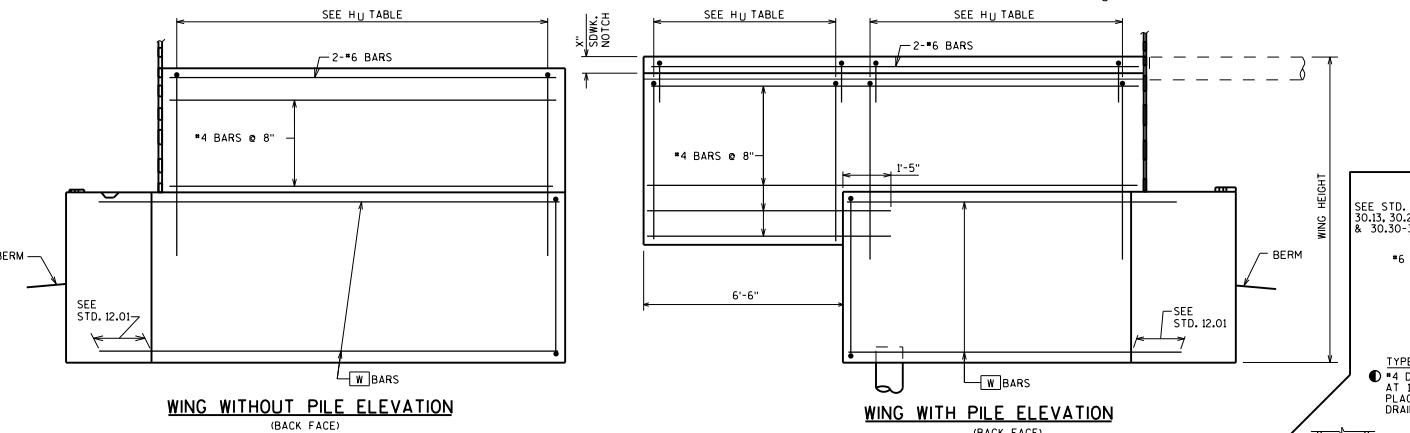


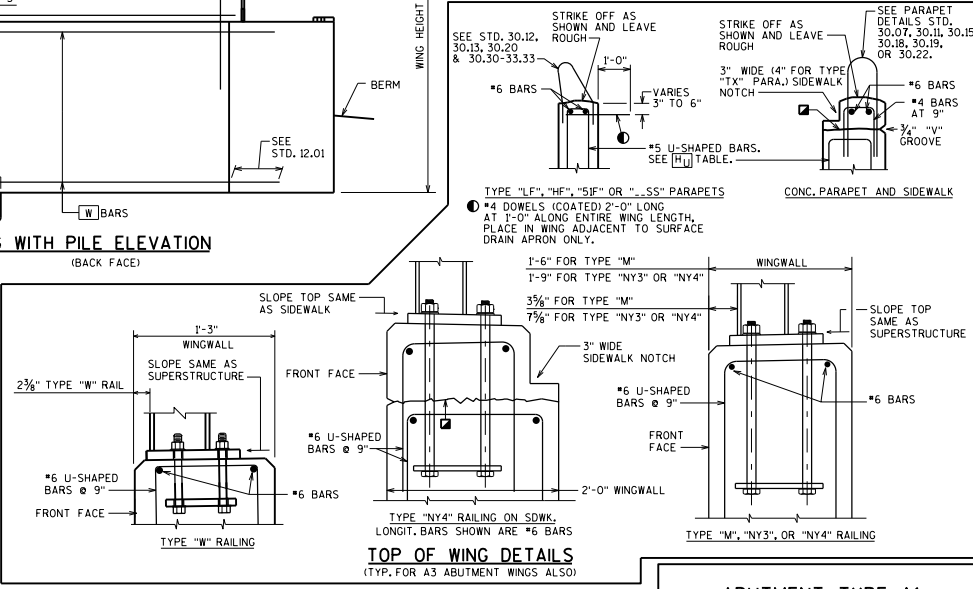
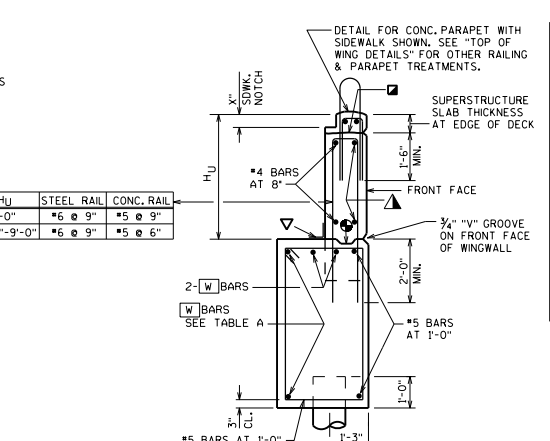
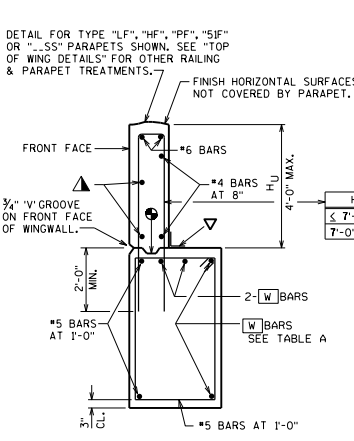
DESIGNER NOTES
 SEE STD. 12.01 FOR ADDITIONAL DESIGNER NOTES.
 WING WITH PILE & WING WITHOUT PILE CAN BE USED FOR EITHER SIDEWALK OR SLOPED FACE PARAPETS. THE TYPE OF WING TO USE IS BASED ONLY ON THE WING HEIGHT AND WING LENGTH LIMITATIONS SHOWN.
 NAME PLATE (ONLY FOR TYPE "F", "W" AND "M" OR TIMBER RAIL AS SHOWN ON STANDARD 30.24), LOCATE NAME PLATE ON FIRST RIGHT WING TRAVELING UP STATION.
 SEAL ALL EXPOSED HORIZONTAL AND VERTICAL SURFACES OF 1/2" FILLER WITH NON-STAINING GRAY NON-BITUMINOUS JOINT SEALER, (1" DEEP AND HOLD 1/8" BELOW SURFACE OF CONCRETE). EXTEND SEALER 3" BELOW GUTTER LINE AT INSIDE FACE.
LRFD DESIGN LOADS
 LIVE LOAD = 2'-0" SURCHARGE
 LOAD FACTORS:
 $\gamma_{DC} = 1.25$
 $\gamma_{DEH} = 1.50$
 $\gamma_{DEV} = 1.35$
 $\gamma_{LS} = 1.75$
 EXPOSURE CLASS 2, $\gamma_E = 0.75$
 $f'_c = 60,000$ P.S.I.
 $f'_s = 35,000$ P.S.I.
 HORIZ. EARTH LOAD BASED ON:
 35 P.C.F. EQUIV. FLUID UNIT
 WEIGHT OF SOIL

TABLE A

WING LENGTH	WING HEIGHT				BARS
	8'-6"	10'-0"	11'-6"	13'-0"	
10'-0"	#6-#6's	#6-#6's	#6-#5's		W
	#7-#8's	#7-#8's	#7-#5's		A1
12'-0"	#6-#6's	#7-#6's	#7-#5's		W
	#7-#8's	#7-#8's	#6-#7's		A1
16'-0"	#7-#6's	#8-#6's	#7-#7's		W
	#5-#8's	#6-#8's	#7-#8's		A1
20'-0"	#7-#7's	#7-#8's	#8-#8's		W
	#6-#9's	#7-#9's	#7-#10's		A1
24'-0"	#8-#8's	#9-#8's	#9-#9's		W
	#7-#9's	#8-#9's	#8-#10's		A1



* WING WITHOUT PILE VALUES SHOWN. USE 10'-0" WING HEIGHT VALUES FOR WING HEIGHTS UP TO 10'-8". (FOR WING WITH PILE THAT HAS WING LENGTH IN THIS REGION, USE VALUES FOR 11'-6" WING HEIGHT)



WING WITHOUT PILE SECTION

WING WITH PILE SECTION

CONSTRUCTION JOINT, LEAVE ROUGH. REQUIRED FOR PRESTRESSED CONCRETE SUPERSTRUCTURES. OPTIONAL FOR OTHERS. POUR CONCRETE ABOVE THIS JOINT AFTER DECK IS IN PLACE. IF JOINT IS USED, UTILIZE RUBBERIZED MEMBRANE WATERPROOFING (COST INCIDENTAL TO BID ITEM "CONCRETE MASONRY BRIDGES").

USE #4 BARS @ 1'-0".

OPTIONAL CONST. JOINT FORMED BY BEVELED 2" x 6" KEYWAY WITH MEMBRANE ON BACKFACE.

ABUTMENT TYPE A1

BUREAU OF STRUCTURES

APPROVED: *Laura Shadewald*

DATE: 7-23